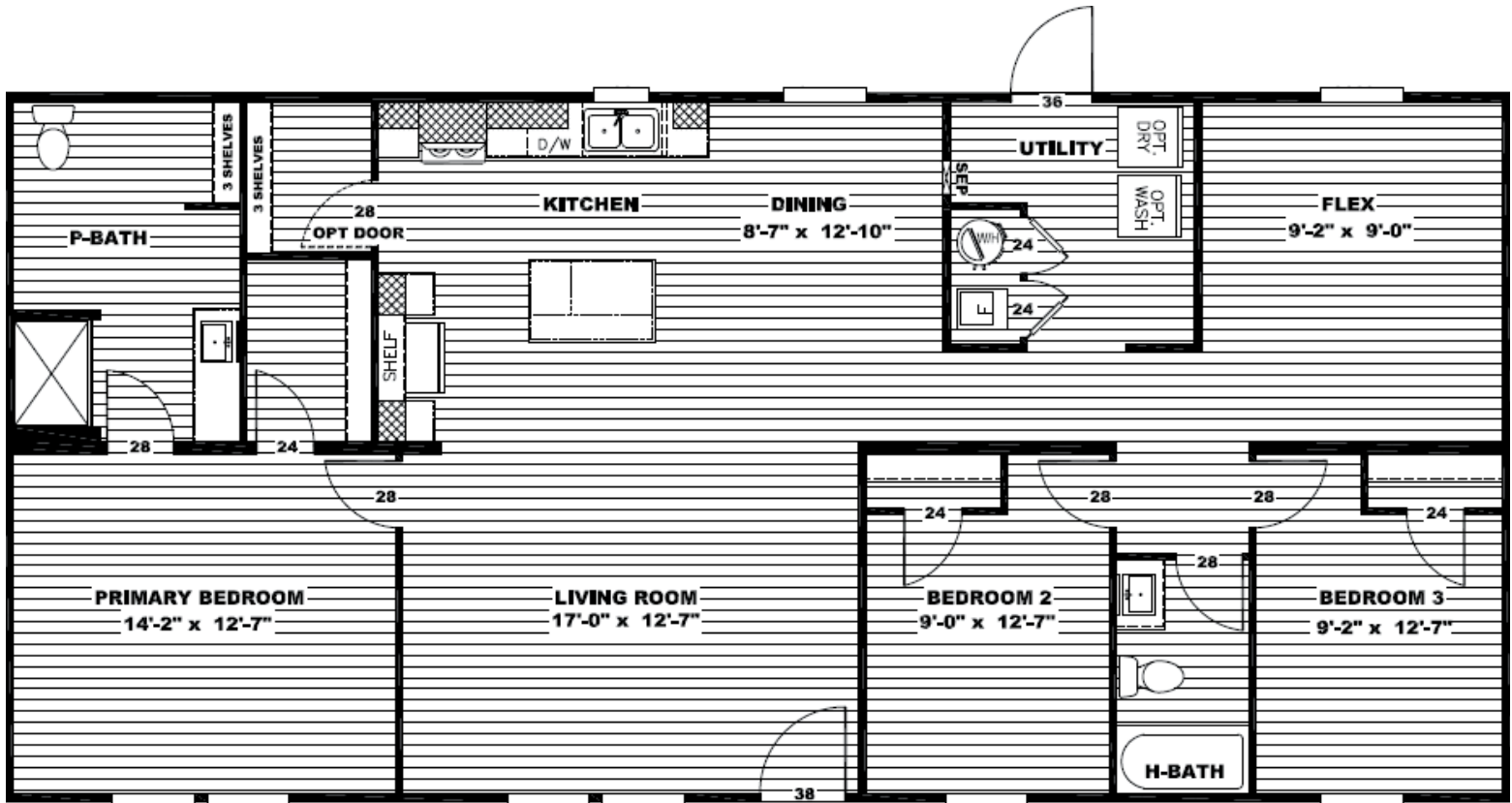


Clayton - MiYO Aspire

4 BEDS | 2 BATHS | 1,475 SQ FT



STANDARD FEATURES

- Architectural Shingles
- A/C Disconnect
- Water Shut Offs T/O
- 6-Panel Front Door
- China Sinks
- 30"x60" Tub/Shower
- 48" Fiberglass Shower
- Functional, Life-Ready Floor Plans
- 8' Flat Ceilings
- 42" Overheads Cabinets
- Stainless Steel Appliances
- eBuilt® Energy-Savings Features
- Optional Luxury Bath
- Walk-In Pantry
- Optional Utility Coat Closet
- Flex Room
- Optional 4th Bedroom
- Optional Sliding Glass Door

INCLUDED IN COMMUNITY

- **Spectrum Internet & Advanced WiFi**
 - High-speed internet with speeds up to 1 Gig
 - Enhanced security with Security Shield
 - Easy device management via mobile app
 - Included with lot rent—no extra cost
- **Trash Service**
 - Weekly residential trash pickup
 - Community cleanliness and curbside convenience
- **Professional Land & Lawn Maintenance**
 - Regular mowing, edging, and landscaping in common areas
 - Hassle-free exterior upkeep
- **Community Amenity Center Access**
 - Resort-style swimming pool
 - Resident clubhouse for events and gatherings
- **Planned Resident Events**
 - Seasonal celebrations, giveaways, and family-friendly activities
 - Opportunities to connect and build community
- **On-Site Management & Maintenance Team**
 - Dedicated staff to support residents
 - Prompt response to maintenance requests
- **Free After-School Programs**
 - Complimentary after-school care to support working families, making life easier for parents and providing engaging activities for children.

