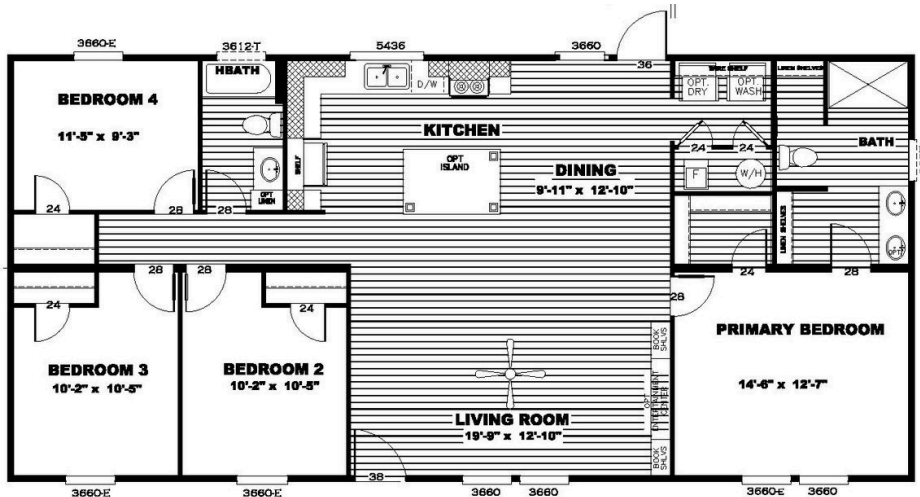




Clayton - Crazy Eights

4 BEDS | 2 BATHS | 1,475 SQ FT | 28' x 56'



The Clayton Crazy Eights offers a thoughtfully designed living space with 4 bedrooms and 2 bathrooms, encompassing approximately 1,475 square feet. Its open-concept layout seamlessly connects the living, dining, and kitchen areas, creating an inviting atmosphere for family gatherings and entertaining. The split-bedroom design ensures privacy, with the primary suite featuring a spacious ensuite bathroom and a generous walk-in closet.

Key Features: Open-concept floor plan, Modern kitchen with island and ample cabinetry, Split-bedroom layout for added privacy, Primary suite with ensuite bathroom and walk-in closet, Energy-efficient appliances, Utility room with washer/dryer hookups, Available in multiple interior color packages

Standard Features

- 8' Flat Ceilings
- Six Panel Steel Front Door Porch Lights
- ecobee® Smart Thermostat
- 16" O.C. Floor Joists
- Two Panel Interior Doors
- Exterior Electrical Receptacle on rear sidewall
- 42" DuraCraft® Cabinets in Kitchen
- Hybrid Heat Pump Water Heater
- Carrier® SmartComfort® Furnace
- Water Shutoffs Throughout
- Trim Around Mirrors Throughout
- Recessed LED Lighting
- 2" Mini-Blinds
- White Smart panel Fascia
- Faucet on rear sidewall
- 5" Lineal Trim
- Vinyl Siding
- Ceiling Fan in Primary Bedroom or Den
- Farmhouse Sink (Stainless/White)
- Sliding Glass Door
- Additional Windows (Where Applicable)
- Kitchen Island
- Ceiling Fan in Living Room
- Samsung® Appliances
- Low-E Insulated Windows
- BeauFlor Vinyl Flooring
- Carpet by Shaw®
- Towel Bar & Tissue Holder
- 8" Deep Stainless Steel Sink
- Clear Low E Argon Windows
- Wire Utility Shelf
- Fiberglass Shower (Primary & Guest Bath)

INCLUDED IN COMMUNITY

- **Trash Service**
 - Weekly residential trash pickup
 - Community cleanliness and curbside convenience
- **Professional Land & Lawn Maintenance**
 - Regular mowing, edging, and landscaping in common areas
 - Hassle-free exterior upkeep
- **Community Amenity Center Access**
 - Resort-style splash-pad
 - Resident clubhouse for events and gatherings
- **Planned Resident Events**
 - Seasonal celebrations, giveaways, and family-friendly activities
 - Opportunities to connect and build community
- **On-Site Management & Exterior Maintenance Team**
 - Dedicated staff to support residents
 - Prompt response to exterior maintenance requests
- **Free After-School Programs**
 - Complimentary after-school care to support working families, making life easier for parents and providing engaging activities for children.

