


 3 Beds

 2 Baths

 Living Space
1330 SF

 Home Size
18' x 76'



*Features and finishes may vary by home. Floor plans, renderings, and dimensions are approximate and shown for illustrative purposes only.

The Festival floor plan by Clayton Bonham offers 1,330 sq. ft. of modern, functional living space with 3 bedrooms, 2 bathrooms, and a thoughtfully designed split-bedroom layout. This 18x76 single-wide home features a spacious open-concept living area, large kitchen island, Samsung stainless steel appliances, 42" DuraCraft® cabinets, and a private primary suite with a walk-in closet and Glamour Bath option.



Community Features & Resident Experience



Effortless Living

- Weekly residential trash service for everyday convenience
- Professionally maintained green spaces and common areas
- Dedicated on-site team for exterior maintenance and support



Resort-Inspired Amenities

- Resident clubhouse designed for gatherings and community events
- Modern Community fitness center with weight equipment and comfortable workout space
- Thoughtfully planned spaces that encourage connection and outdoor living



Connected Community

- Seasonal resident events, celebrations, and giveaways
- Opportunities to meet neighbors and build lasting relationships



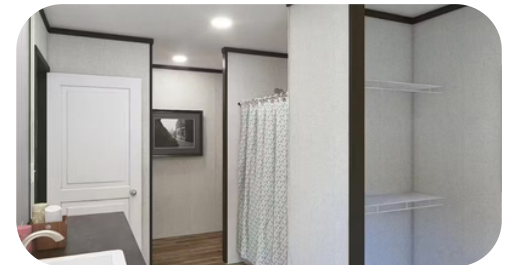
Family-Focused Conveniences

- Modern playground spaces designed for everyday family fun and outdoor enjoyment.
- Safe, family-friendly communities with open green spaces designed for gathering, play, and outdoor living.



Everyday Practicality

- Convenient access to major highways and daily commuting routes
- Close to shopping, dining, schools, and everyday essentials
- Thoughtfully located communities designed for comfort and convenience



Interior Features & Finishes

- Open-Concept Split Bedroom Layout
- Spacious Living Room Design
- Large Kitchen Island
- 42" DuraCraft® Upper Cabinets
- Center Shelf & Lined Cabinets
- Samsung Stainless Steel Appliances
- Dishwasher Included
- European Vented Range Hood
- Recessed LED Lighting Throughout
- 8' Flat Textured Ceilings
- Ceiling Fan Prep in Living Room & Primary Bedroom
- Linoleum Flooring Throughout
- Spacious Walk-In Closet in Primary Suite
- Glamour Bath Layout
- Fiberglass Garden Tub & Shower in Primary Bath
- Fiberglass Tub & Shower in Secondary Bath
- Porcelain Vanity Sinks
- Ecobee Smart Thermostat
- Rheem® Hybrid Water Heater
- 60" Energy Efficient Thermopane Windows

