


 3 Beds

 2 Baths

 Living Space
1330 SF

 Home Size
18' x 76'



*Features and finishes may vary by home. Floor plans, renderings, and dimensions are approximate and shown for illustrative purposes only.

The Sensation floor plan offers 1,330 sq. ft. of stylish, functional living space with 3 bedrooms, 2 bathrooms, and a thoughtfully designed open-concept layout perfect for modern living. This 18x76 home features a spacious living room, flexible bonus space, 42" upper cabinets, recessed lighting, durable flooring throughout, and a private primary suite for added comfort. With 8-foot flat ceilings, modern finishes, energy-efficient features, and practical everyday design, The Sensation delivers the perfect blend of affordability, comfort, and contemporary style.



Community Features & Resident Experience



Effortless Living

- Weekly residential trash service for everyday convenience
- Professionally maintained green spaces and common areas
- Dedicated on-site team for exterior maintenance and support



Resort-Inspired Amenities

- Resident clubhouse designed for gatherings and community events
- Modern Community fitness center with weight equipment and comfortable workout space
- Thoughtfully planned spaces that encourage connection and outdoor living



Connected Community

- Seasonal resident events, celebrations, and giveaways
- Opportunities to meet neighbors and build lasting relationships



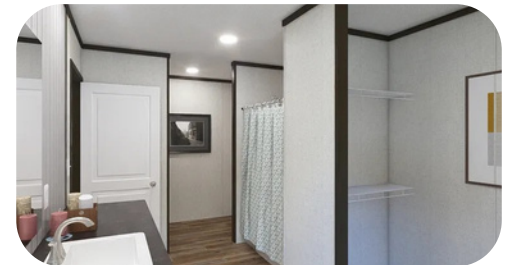
Family-Focused Conveniences

- Modern playground spaces designed for everyday family fun and outdoor enjoyment.
- Safe, family-friendly communities with open green spaces designed for gathering, play, and outdoor living.



Everyday Practicality

- Convenient access to major highways and daily commuting routes
- Close to shopping, dining, schools, and everyday essentials
- Thoughtfully located communities designed for comfort and convenience



Interior Features & Finishes

- Open-Concept Living Layout
- 8' Flat Ceilings
- Recessed Lighting Throughout
- Flex Space Area
- 42" Upper Cabinets
- Center Shelf & Lined Cabinets
- Dishwasher Included
- European Range Hood
- Linoleum Flooring Throughout
- Craftsman Front Door
- Cottage Rear Door
- 60" Windows for Natural Light
- Ceiling Fan Prep in Living Room
- Ceiling Fan Prep in Primary Bedroom
- Fiberglass Garden Tub/Shower in Primary Bath
- Fiberglass Tub/Shower in Secondary Bath
- Porcelain Vanity Sinks
- Rheem® Hybrid Water Heater

