



Clear Choice 1660

2 Beds

2 Baths

Living Space
960 SF

Home Size
16' x 60'



*Features and finishes may vary by home. Floor plans, renderings, and dimensions are approximate and shown for illustrative purposes only.

The **Clear Choice 1660** floor plan delivers smart, modern living in a thoughtfully designed single-section home perfect for comfort, functionality, and everyday convenience. Featuring an open-concept layout, spacious bedrooms, and stylish finishes throughout, this home combines affordability with modern design to create the ideal space for first-time homebuyers, downsizers, or growing families.

832.924.6851

livecivitas.com



Community Features & Resident Experience



Effortless Living

- Weekly residential trash service for everyday convenience
- Professionally maintained green spaces and common areas
- Dedicated on-site team for exterior maintenance and support



Resort-Inspired Amenities

- Resident clubhouse designed for gatherings and community events
- Modern Community fitness center with weight equipment and comfortable workout space
- Thoughtfully planned spaces that encourage connection and outdoor living



Connected Community

- Seasonal resident events, celebrations, and giveaways
- Opportunities to meet neighbors and build lasting relationships



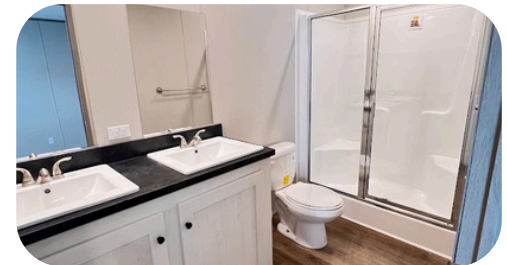
Family-Focused Conveniences

- Modern playground spaces designed for everyday family fun and outdoor enjoyment.
- Safe, family-friendly communities with open green spaces designed for gathering, play, and outdoor living.



Everyday Practicality

- Convenient access to major highways and daily commuting routes
- Close to shopping, dining, schools, and everyday essentials
- Thoughtfully located communities designed for comfort and convenience



Interior Features & Finishes

- Open-Concept Living Layout
- Samsung® Stainless Steel Appliances
- DuraCraft® Cabinets
- Dishwasher Included
- 8" Stainless Steel Kitchen Sink
- LED Can Lighting Throughout
- Ceiling Fan in Living Room
- Ceiling Fan Prep in Primary Bedroom
- Lino Flooring Throughout
- Craftsman Style Front Door with Storm Door
- Craftsman Rear Door
- Fiberglass Walk-In Shower in Primary Bath
- Fiberglass Tub/Shower Combo in Bath 2
- Porcelain Bathroom Lavatories
- Modern Metal Faucets
- Towel & Tissue Holders in Both Bathrooms
- 2" Mini Blinds Throughout
- Optional Kitchen Island or Peninsula

