


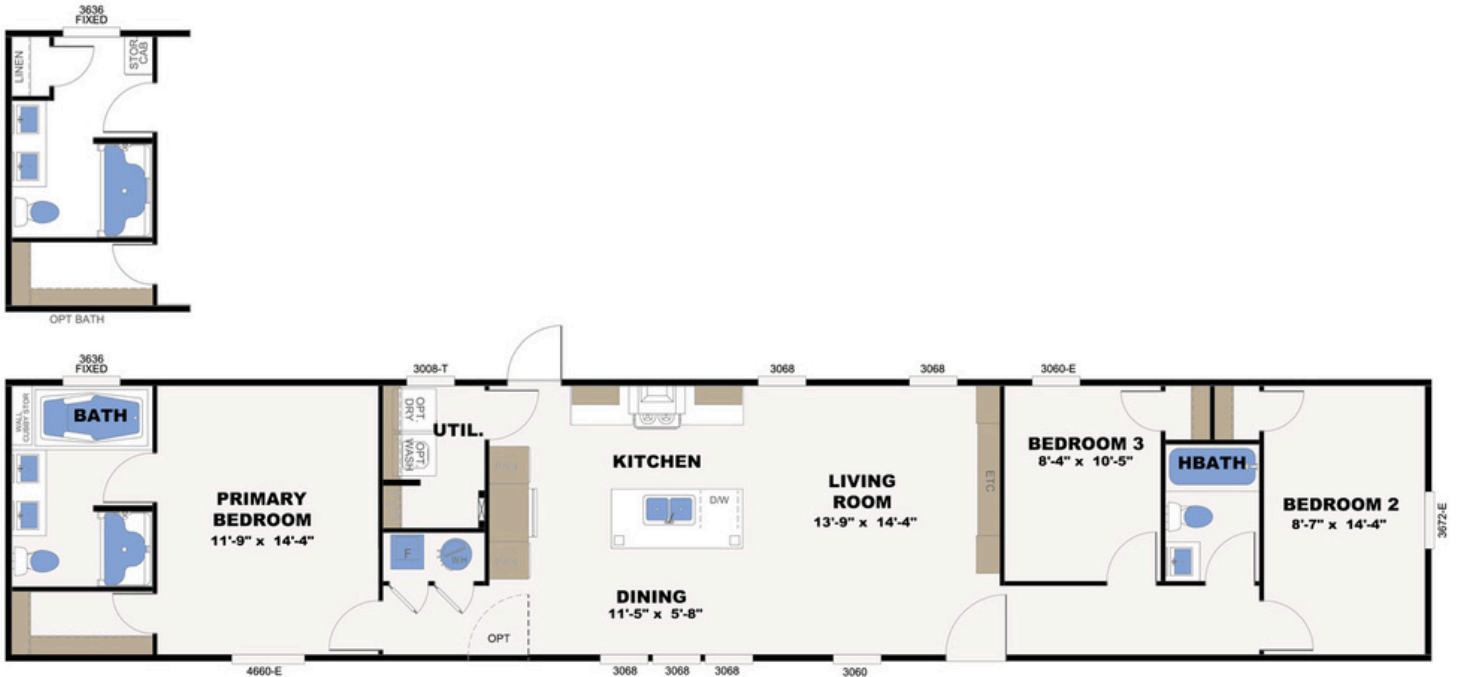
 3 Beds

 2 Baths

 Living Space  
1140 SF

 Home Size  
16' x 76'



\*Features and finishes may vary by home. Floor plans, renderings, and dimensions are approximate and shown for illustrative purposes only.



The Resolution 3X combines modern farmhouse charm with functional living. This spacious 3-bedroom, 2-bath home features an open-concept design, a stunning chef-inspired kitchen with an oversized island, and a private primary suite complete with a spa-like bath. Thoughtful storage, premium finishes, and bright living spaces make The Resolution X the perfect place to call home.



# Community Features & Resident Experience



## Effortless Living

- Weekly residential trash service for everyday convenience
- Professionally maintained green spaces and common areas
- Dedicated on-site team for exterior maintenance and support



## Resort-Inspired Amenities

- Resident clubhouse designed for gatherings and community events
- Modern Community fitness center with weight equipment and comfortable workout space
- Thoughtfully planned spaces that encourage connection and outdoor living



## Connected Community

- Seasonal resident events, celebrations, and giveaways
- Opportunities to meet neighbors and build lasting relationships



## Family-Focused Conveniences

- Modern playground spaces designed for everyday family fun and outdoor enjoyment.
- Safe, family-friendly communities with open green spaces designed for gathering, play, and outdoor living.



## Everyday Practicality

- Convenient access to major highways and daily commuting routes
- Close to shopping, dining, schools, and everyday essentials
- Thoughtfully located communities designed for comfort and convenience



## Interior Features & Finishes

- Spacious 3 Bedroom / 2 Bath Design
- Open-Concept Living, Dining & Kitchen Area
- Oversized Kitchen Island with Seating Space
- Stainless Steel Appliance Package
- Stainless Steel Vent Hood
- Farmhouse-Style Stainless Steel Sink
- Designer Black Shaker Cabinetry
- Full Height Refrigerator Cabinet Surround
- Decorative Shiplap Kitchen Accent Wall
- Luxury Wood-Look Flooring Throughout Main Living Areas
- Built-In Entertainment Center with Storage
- Recessed LED Lighting Package
- Ceiling Fan in Living Room
- Large Energy-Efficient Windows
- Private Primary Suite
- Dual Vanity Sinks in Primary Bath
- Oversized Soaking Tub & Separate Shower
- Dedicated Utility Room with Additional Storage

