

Steel Rolly

The rolling half pallet

This rolling half-pallet is perfect for transporting modular packaging like crates and boxes. It allows one person to move products to the shop floor easily and safely - no lifting equipment required.



High load capacity

Rolly's are the size of a 1/2 pallet, and can carry two stacks of 600x400 crates or boxes.



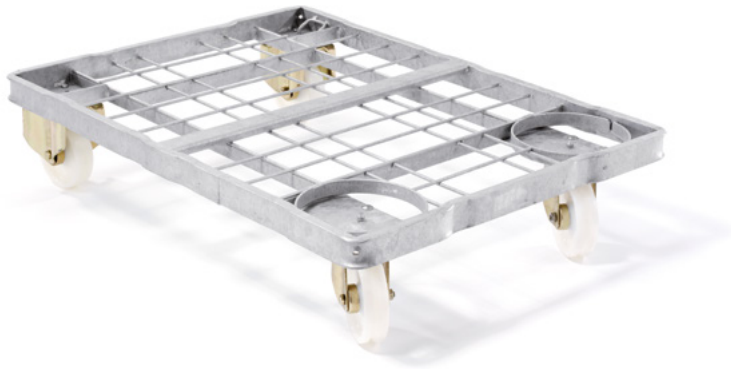
Stackable

Easily stackable to reduce the storage volume for return transport.



Galvanised steel

The robust design guarantees a long service life, and the material is 100% recyclable.



Characteristics

Material	Steel
Temperature (C°)	-30C to +70C

Dimensions

External (L x W x H)	811 x 605 x 182
Weight (kg)	13,5

Loading capacity

Dynamic load capacity (kg)	400
----------------------------	-----

Loading quantities

Units per trailer	64
Stack (units)	12
Units per trailer (stacked)	768