

COOLTOP®

STAY COOLER, PLAY LONGER™



Brisbane State High School Sporting Complex
Queensland, Australia





MULTI-SPORT SURFACE SOLUTION FOR:



PICKLEBALL



TENNIS



NETBALL



BASKETBALL



MULTI-PURPOSE

BATTLING THE HEAT, Rather Than Your Opponent?

COOLTOP®



Padel Court, Broadbeach, Gold Coast, Australia



Yangju City, (Seoul) South Korea



Park Hyatt Melbourne, Melbourne, Australia

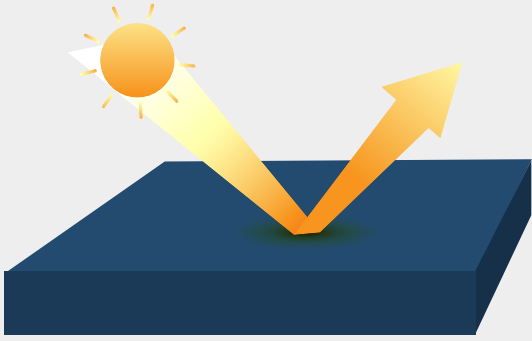
CoolTop is intended as a finish on athletic surfaces and is compatible with all our range of systems:

- Hard court
- Cushion mat
- Liquid rubber applied

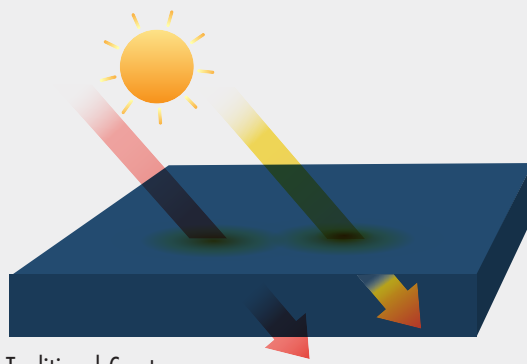


COOLTOP®

California Sports Surfaces CoolTop® is specially formulated with IR reflective pigments that help reduce surface temperature through solar reflectance (when compared to standard competitor court surfaces), assisting in overall player comfort. Tested in real-world environments.



California Sports Surfaces CoolTop



Traditional Court



Bali National Golf Club, Nusa Dua, Bali, Indonesia



Knox Regional Netball Centre, Australia



Court pia Oizumi Tennis Club, Tokyo, Japan

TESTED IN REAL WORLD ENVIRONMENTS

2023's Yeppoon Pickleball Festival was hosted at the complex between the 14th and the 23rd of July, welcoming over 100 players from across Australia and NZ for 10 days of fun, competitions, coaching and tournament play.

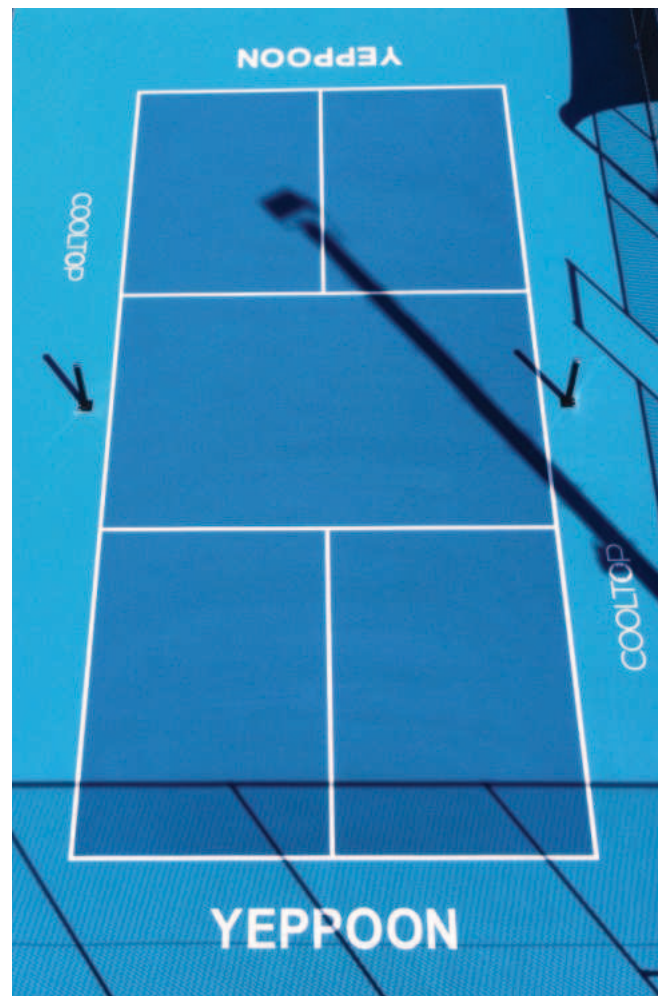
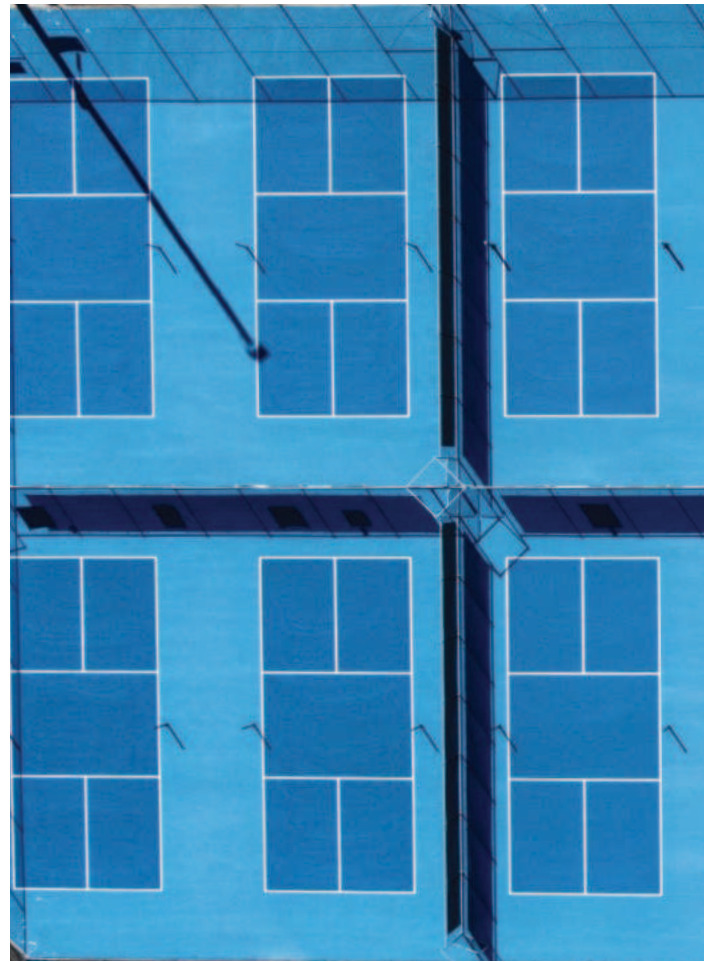
Despite being played in winter, Yeppoon still frequently has temperatures above 86°F (30°C). Prior to the tournament, CoolTop was installed on their feature acrylic courts to reduce the surface temperature (via solar reflectance), with the goal of assisting in overall player comfort.

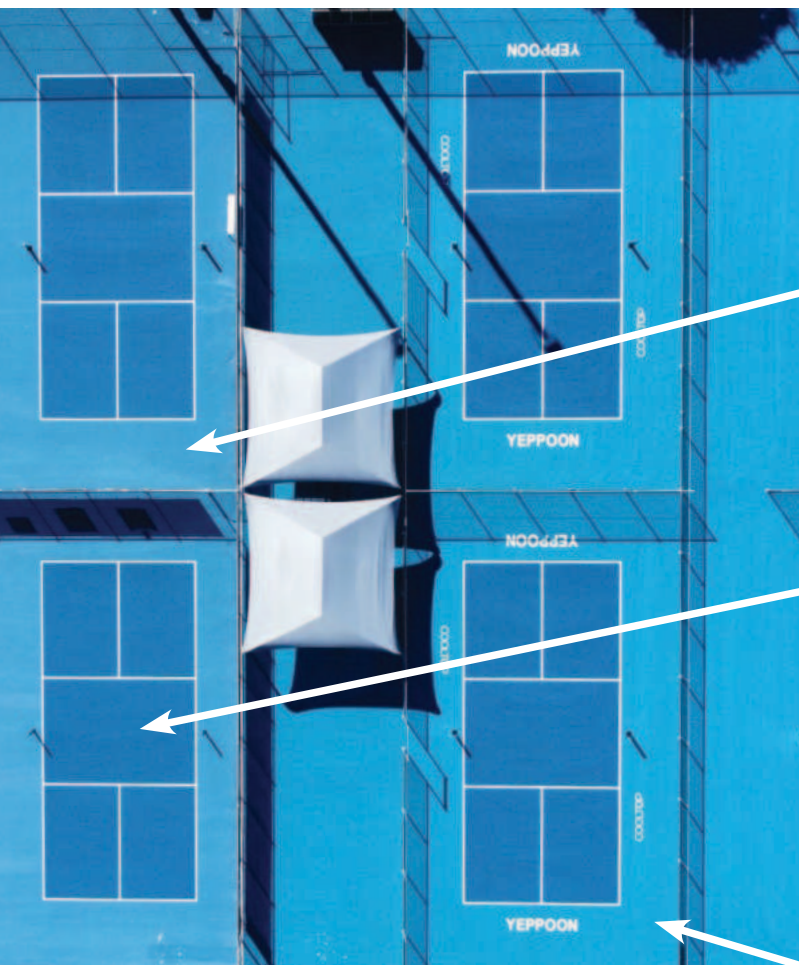
The 6 feature courts to the right of the marquees were surfaced with CoolTop in Nordic and Ice Blue colors. The 8 courts to the left were surfaced with standard Blue outbounds and CoolTop Nordic Blue inbounds. The court surface temperatures shown below were recorded on Friday 21st of July, at 1.30pm – with the ambient temperature of 86°F (30°C):

Standard Blue:
125.6°F (52°C)

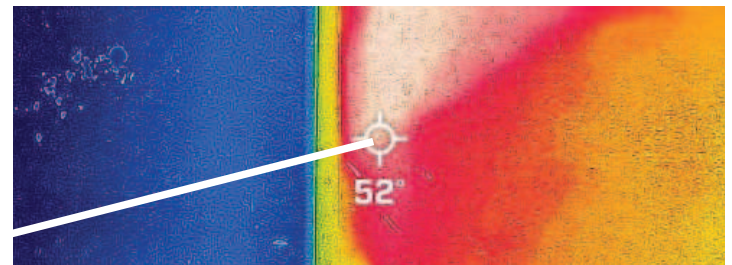
CoolTop Nordic Blue:
100.6°F (38.1°C)

CoolTop Ice Blue:
93.9°F (34.4°C)

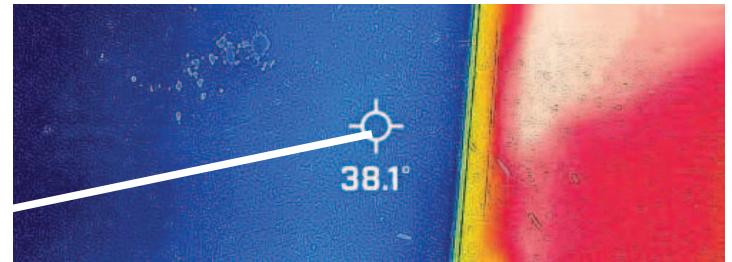




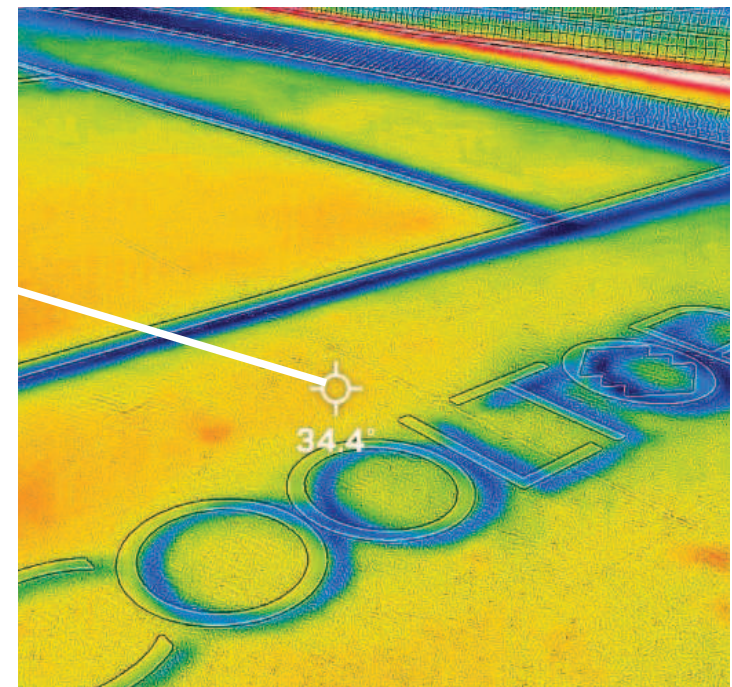
STANDARD BLUE OUTBOUNDS




COOLTOP NORDIC BLUE INBOUNDS



COOLTOP ICE BLUE OUTBOUNDS





COOLTOP[®]

SHOWED TEMPERATURES

UP TO **33%**

LOWER

THAN FOR A SIMILAR COLOR

IN STANDARD COATING

- With Solar Reflective ratings 20-30% higher than standard court coatings, our CoolTop coatings will retain less heat and help reduce the temperature of your court. Temperature reductions will vary depending on location, court color and site conditions.
- Reduces the impact of heat islands and banks, which can develop at large multicourt sports facilities.
- Colors have been developed specifically to maximize surface heat rejection, whilst offering an aesthetically pleasing look.
- Surface speed performance and long-term durability match California Sports Surfaces quality standards.

“

Having played pickleball outdoors on many surfaces and now experiencing playing on a surface that has reflective pigments, **I feel the change, it takes the heat off me so i can put it into my play.**

KEL RASMUSSEN
FORMER DIRECTOR - PICKLEBALL ASSOCIATION AUSTRALIA

CoolTop is available in the following ITF court pace rating categories, and it can also be customized based on your personal preferences:



“

When we played on the surface for the first time after they were completed, I was extremely happy and surprised how much cooler the court was to play on, **our members have even commented at how much cooler the courts are to play on now.** You don't get that rise of heat coming off of the courts that you get from the normal surface. I would highly recommend anyone looking to resurface their tennis court to go with the CoolTop surface, you will definitely feel the difference and be very happy you went with it when you play on your court for the first time in the sun.”

KEVIN ORSI - HEAD COACH/MANAGER
AT MUDGEERABA TENNIS CLUB



Moreton Bay College, Manly West, Australia



Mudgeeraba Tennis Club, Queensland, Australia
Photo Credit: Visuals By Lochie



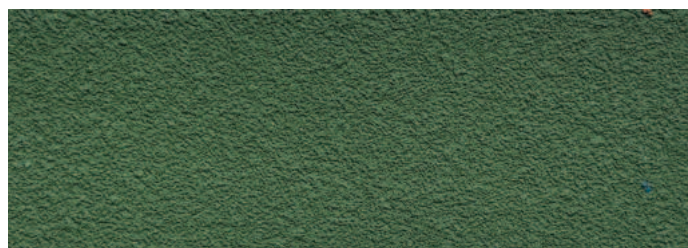
STIRLING GREY



STEEL GREY



NORDIC BLUE



FOREST GREEN



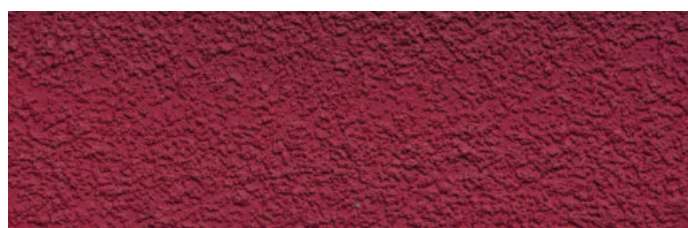
ICE BLUE



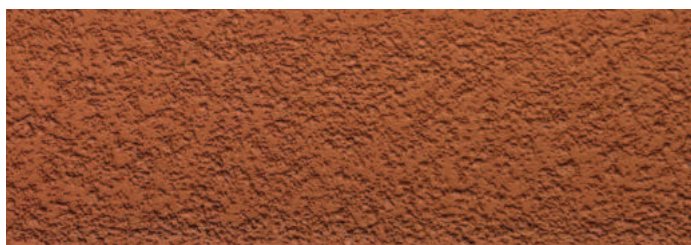
MINT GREEN



BELLS BLUE ♦



RUBY RED ♦



EARTH ♦

On-screen and printer color representations may vary from actual product colors.
Diagrams not to scale.

♦ Custom colors, produced on a made to order basis, available for a charge.