



DMS Sensor Installation SOP

January 2026 Version 3.6

Table of Contents

DMS Connectivity Outline	2
Equipment Required.....	3
Required Tools (Not supplied)	3
Optional Materials	4
3-to-1-inch Adjustable Articulated Mount for DMS	4
Step 1: Install the D-450.....	5
Step 2: Place the DMS on the Vehicle Dash.....	6
Articulated Mount Axis of Rotation	7
Step 3: Pair the DMS using the Driver•i Installer App	8
Step 4: Calibrating the DMS	8
Step 5: Mounting the DMS to the vehicle dash	10
Step 6: Verify DMS Calibration.....	10
Second Installation Report:	11
Submitting Second Installation Report:	11
DMS Sensor LED Status.....	12
How to Unpair DMS Sensor.....	13
FCC PART 15 STATEMENT	14

DMS Connectivity Outline

DMS Sensor

SKU# ACCDM2DMSCAM

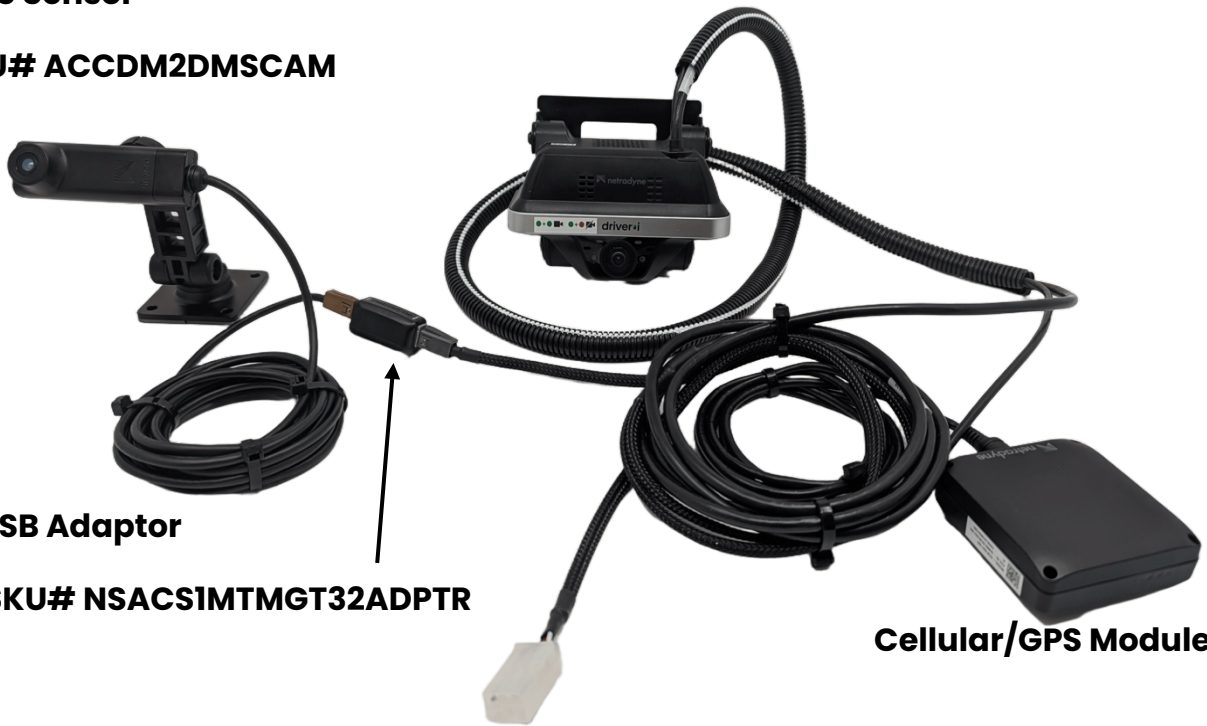
Driver•i D-450

USB Adaptor

SKU# NSACSIMTMGT32ADPTR

Cellular/GPS Module

6-Pin Molex Power Connection



Equipment Required

The following equipment is required to complete the installation:

- Netradyne Driver•i D-450 (ordered separately)
 - OTA 5.6.4.rc.1 or higher
- Driver Monitoring System (DMS) Sensor (ordered separately)
- What's in the box (DMS)
 - USB Adaptor
 - Male-to-male pass-through
 - Both use GT32 connectors
 - For configurations with multiple accessories a USB Hub is available
 - Zip Ties (Supplied for Articulated Mount)
 - Screws 3/4th Phillips #8
 - Small plastic clip (Supplied for Articulated Mount)



Port Expander

Required Tools (Not supplied)

- Sharpie or other marking implement
- Masking Tape or Double-sided tape
- >90% Rubbing or Denatured Alcohol
- T-10 Security Torx Driver or Bit
- T-30 (articulated mount)
- Mobile Phone Android or IOS with Driver•i Installer App
 - v6.6 or higher

Minimum Required SW version for the D-450 is 5.6.6rc2 for DMS Sensor Pairing.

- DMS needs to enable on cloud by Ops

Optional Materials

- 3M Adhesion Promoter 111, Clear, 250 mL Bottle, Fast-Acting, Quick Drying, Isopropyl Alcohol Based Solution, Promotes Better Adhesion of 3M VHB Tapes
 - For use in vehicles that need better VHB adhesion



3-to-1-inch Adjustable Articulated Mount for DMS

A 3-to-1 inch adjustable articulated mount is offered to accommodate vehicles in which the steering wheel, seat adjustments, or lower dashboard components may obstruct the DMS sensor/camera. Depending on the physical characteristics of the vehicle, the installer must determine whether the 1-inch or 3-inch configuration is required to ensure the DMS sensor/camera is not blocked. **This determination must be made on-site during installation.**

The instructions below explain how to adjust the height of the mount:

1. Locate and remove the T-30 Torx security screw from the existing mount head.



2. Then remove the base T-30 Torx security screw holding the base to the mount arm as shown below.

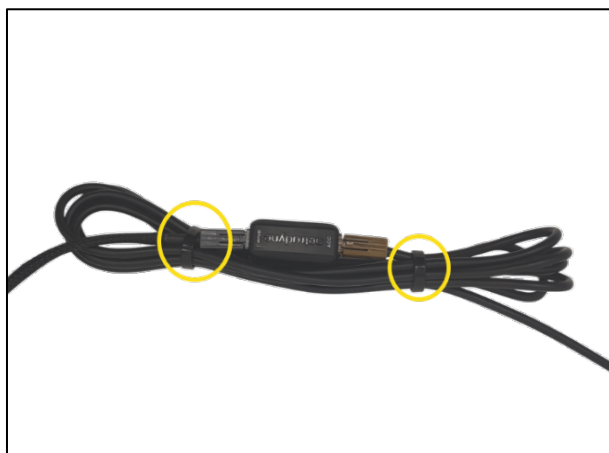


3. Once the base Torx security screw has been removed, attach the mount head to the base plate using the T-30 Torx security screw to securely fasten the mount head to the base plate.



Step 1: Install the D-450

- Assume that a D-450 is already installed. Consult D-450 Installation Guide (SOP)
- During the power cable routing process, attach the male -to-male USB adaptor or the D-450 and DMS USB connection.
- Utilize 2 Zip Ties to tie off the excess cable at both ends as shown below.



Step 2: Place the DMS on the Vehicle Dash

- **Please be advised** that a significant number of vehicle models are equipped with adjustable seats and steering wheels, offering multiple configurations to accommodate driver comfort and visibility.
 - **This adjustability in seating and steering wheel positioning should be carefully considered when placing the Driver Monitoring System (DMS) sensor on the vehicle dashboard as this could potentially block the sensor and affect the ability of the sensor to function properly.**
 - **Device comes with privacy cap that needs to be removed in normal operations.**



Not Centered on Drivers Face



Not Looking Forward



Correct

- Without removing the tape backing on the VHB, place the DMS sensor flat against the vehicle dash, angled at the driver face without any field of view (FOV) obstructions such as tablets or other electronic devices.
 - Please be mindful of the infrared LED.
 - Considerations for DMS camera alignment
 - Side to side (Use head rest as guide)
 - Up and down (Consider steering wheel blockage, driver and seat height)

- Mount must be flat against the dash.
- Place the small clip on the dash to securely route DMS Sensor cable.
- Loosen the screws on the DMS mount so that it can be adjusted up or down.



Infrared LED
DO NOT BLOCK



We offer a 3-to-1 inch Adjustable Articulated mount to accommodate vehicles where steering wheel, seat adjustments and lower dashboards may create clearance issues for calibration. The installer is responsible for determining which option to utilize on-site.

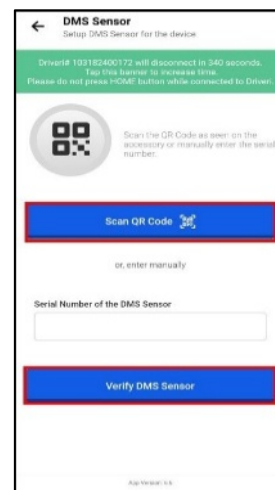
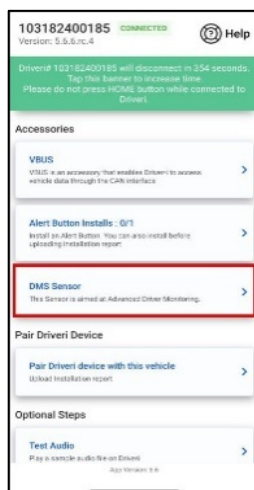
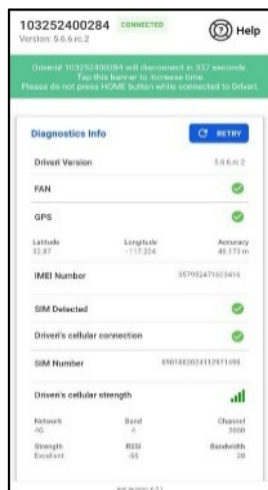


Articulated Mount Axis of Rotation



Step 3: Pair the DMS using the Driver•i Installer App

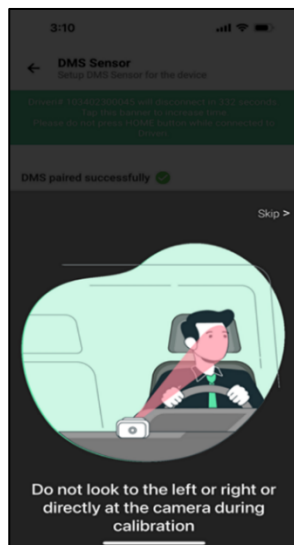
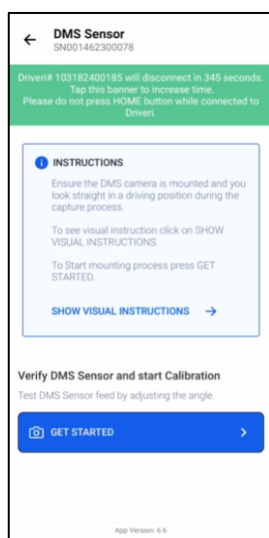
- Connect to the D-450 using the Driver.i Installer App.
- Pair the DMS through the Accessories tab on the Installer App.
- Scan the Serial Number of the DMS.
- Pairing is not complete until device is calibrated, and installation report is uploaded.



Step 4: Calibrating the DMS

- While still connected to the D-450 over the Installer App, choose the "calibrate sensor" option of the DMS.
- Adjust the position of the DMS until all four dots representing pitch, yaw, roll, Face, are green, Refer to figure 5.
 - Refer to Step 2 for adjustment guidance.
- The installer needs to be in the Driver's seat looking straight ahead at the road.
 - Person seated in driver's seat needs to be seating in a normal driving position (Sitting up straight and not leaning forward)
- When ready, press "calibrate" and wait for the calibration to happen.

- With installer APP still connected, proceed to Step 5.



During calibration maintain normal driving posture and look straight ahead for at least 5 seconds

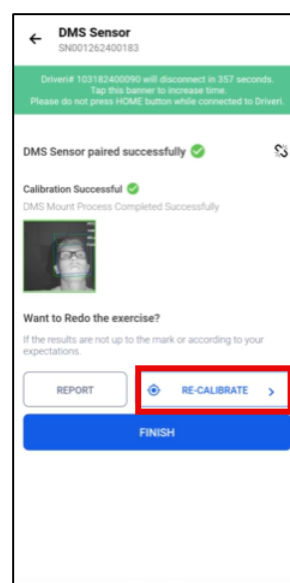
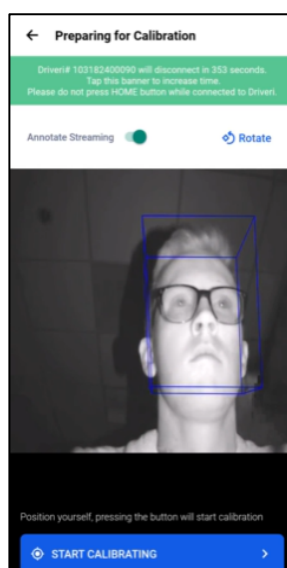
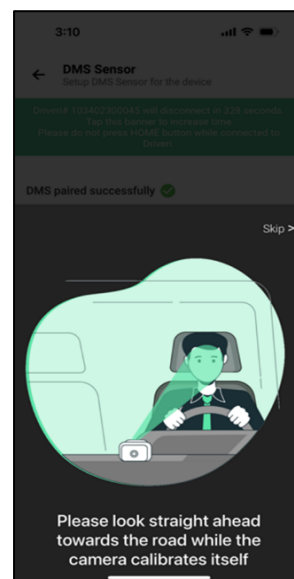


Figure.5

Step 5: Mounting the DMS to the vehicle dash

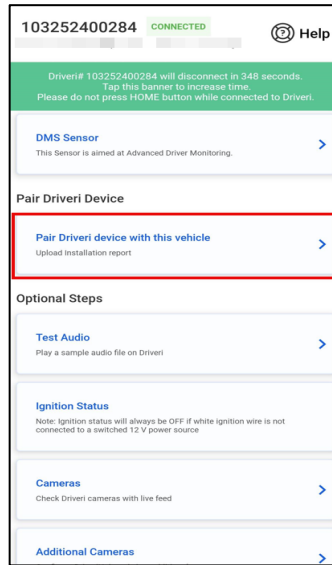
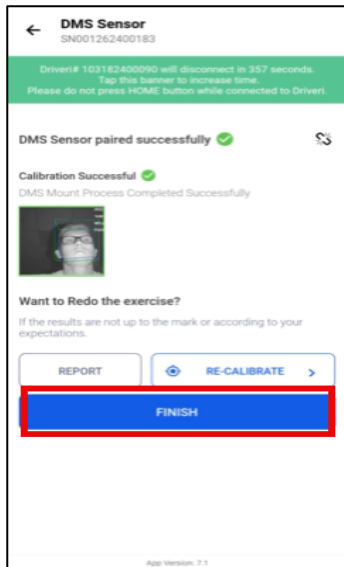
- Once calibrated, tighten the screws of the DMS and mark the position of the mount on the dash with the masking tape or Sharpie.
- Remove the paper covering the VHB and place on the mount back onto the marked area.
- Optionally (4) #8 X ¾ inch Phillips screws are provided for vehicles where additional mount support is needed.



*Pictures not at scale

Step 6: Verify DMS Calibration

- Repeat Step 4 to recalibrate the DMS system one more time, to ensure that the DMS system did not move during the placement process.
 - If the installer app connection was lost before reaching this step, it may be necessary to unpair the DMS in order to reach the calibration step again.
 - **IMPORTANT:** You must upload the report by going through the “pair Driveri with this Vehicle” again to be sure to press the UPLOAD REPORT button at the end to complete the DMS installation you just did. **See second installation report section below for details.**



Second Installation Report:

If you are adding a DMS after the Driver•i has already been installed, paired, and the report uploaded:

- Pair the DMS with the vehicle by following the DMS button calibration instructions.
- Once calibration is successful, go back and select “Pair Driver•i with this Vehicle” again.
- Fill in the required information and upload the report to ensure the new DMS installation settings are recorded in the portal.

Submitting Second Installation Report:

Once back in the main menu:

- Scroll down and tap “Pair Driver•i device with this vehicle.”
- Complete all mandatory fields, ensuring the VIN number and vehicle number are entered correctly. (Failure to do so will result in a new vehicle record being created in the customer account.)
- After completing all required fields, tap Upload Report and then disconnect from Driver•i.

103252400284

CONNECTED

Help

Driver# 103252400284 will disconnect in 348 seconds. Tap this banner to increase time. Please do not press HOME button while connected to Driveri.

DMS Sensor

This Sensor is aimed at Advanced Driver Monitoring.

Pair Driveri Device

Pair Driveri device with this vehicle

Upload installation report

Optional Steps

Test Audio

Play a sample audio file on Driveri

Ignition Status

Note: Ignition status will always be OFF if white ignition wire is not connected to a switched 12 V power source

Cameras

Check Driveri cameras with live feed

Additional Cameras

Installation report

Create installation report

Driver# 103252400284 will disconnect in 270 seconds. Tap this banner to increase time. Please do not press HOME button while connected to Driveri.

Mandatory Fields

Device id

103252400284

Time zone

America/Los_Angeles

Installation location*

? Towne Centre Dr, San Diego, CA 92122

Edit Location (Location obtained from phone)

Installer name*

Joe Snuffy

Vehicle CAN Bus Info

Confirm CAN cable connectivity ?

Vehicles older than 2008 do not support CAN Bus.

Installation report

Create installation report

Driver# 103252400284 will disconnect in 262 seconds. Tap this banner to increase time. Please do not press HOME button while connected to Driveri.

Scan VIN

Scan appropriate barcode or QR code for vehicle VIN.

Vehicle number (Optional)

187UM

License plate number (Optional)

PB4WEGQ

GVWR (Gross Vehicle Weight Rating)*

33,001 and above lb

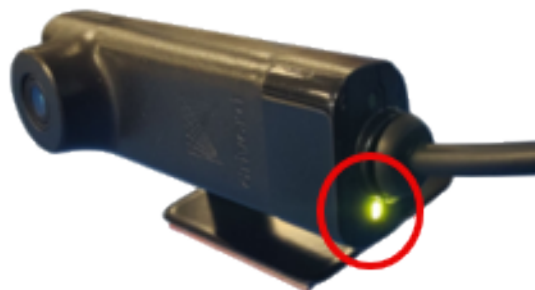
Optional Fields

Upload report

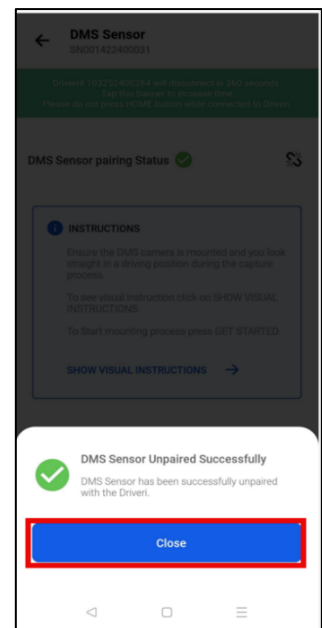
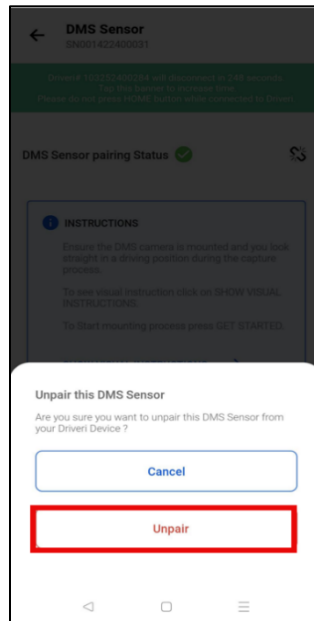
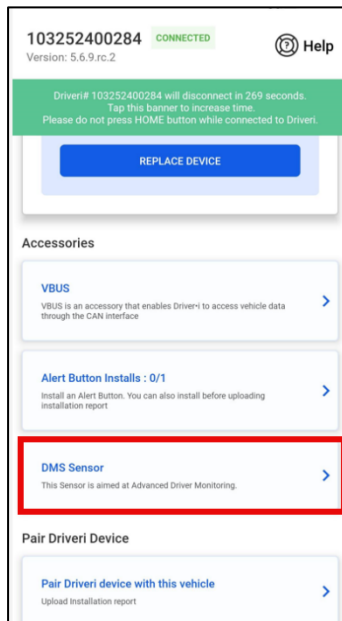
DMS Sensor LED Status

Scenarios	LED Behaviour
DMS Not connected to Driver-i or DMS Connected in (LPM) Low Power Mode	No LED*
DMS Needs to Be Paired and Calibrated	YELLOW
DMS Connected but Not Recording (same as Driver•i Inward camera)/ Privacy Mode Activated.	RED
DMS Connected and Recording	GREEN

**DMS will power ON, only upon connecting to Driver.i.*



How to Unpair DMS Sensor



FCC PART 15 STATEMENT

This device complies with Part 15 of the FCC Rules. Operating is subject to the following two conditions:

- (1) this device may not cause harmful interference, and
- (2) this device must accept any interference received, including interference that may cause undesired operation.

This equipment has been verified to comply with the limits for a class B computing device, pursuant to FCC Rules. In order to maintain compliance with FCC regulations, shielded cables must be used with this equipment. Operation with non-approved equipment or unshielded cables is likely to result in interference to radio and TV reception. The user is cautioned that changes and modification made to the equipment without the approval of manufacturer could void the user's authority to operate this equipment.

This equipment had been tested and found to comply with the limits for a Class B digital device, pursuant to part 15 of the FCC Rules. See 47 CFR Sec. 15.105(b). These limits are designed to provide reasonable protection against harmful interference in a residential installation. This equipment generates, uses and can radiate radio frequency energy and, if not installed and used in accordance with the instructions, may cause harmful interference to radio communications.

However, there is no guarantee that interference will not occur in a particular installation. If this equipment does cause harmful interference to radio or television reception, which can be determined by turning the equipment off and on, the user is encouraged to try to correct the interference by one or more of the following measures:

Reorient or relocate the receiving antenna.

Increase the separation between the equipment and the receiver.

Connect the equipment to an outlet on a circuit different from that to which the receiver is connected.

Consult the dealer or an experienced radio/TV technician for help.

FCC ID:2AM8R-DMS-10

FCC CAUTION STATEMENT FOR MODIFICATIONS

CAUTION: Any changes or modifications not expressly approved by Netradyne could void the user's authority to operate the equipment.