



Driver•i™ D-215 Quick Installation Guide

Note: This is a condensed installation procedure. For full details, refer to the Universal Install Guide.

Driver•i™ D-215: Pre-installation Checklist

Prior to Driver•i Installation, it is imperative that all Carriers include the following four items along with photos:

1. **VIN (Vehicle Identification Number).** Must be clearly identifiable in the photos
2. **License Plate**
3. **Pictures of the vehicle, with truck number (if applicable)**
4. **Installed camera photos showing proper Driver•i placement and proper mounting**

1.



2.



3.

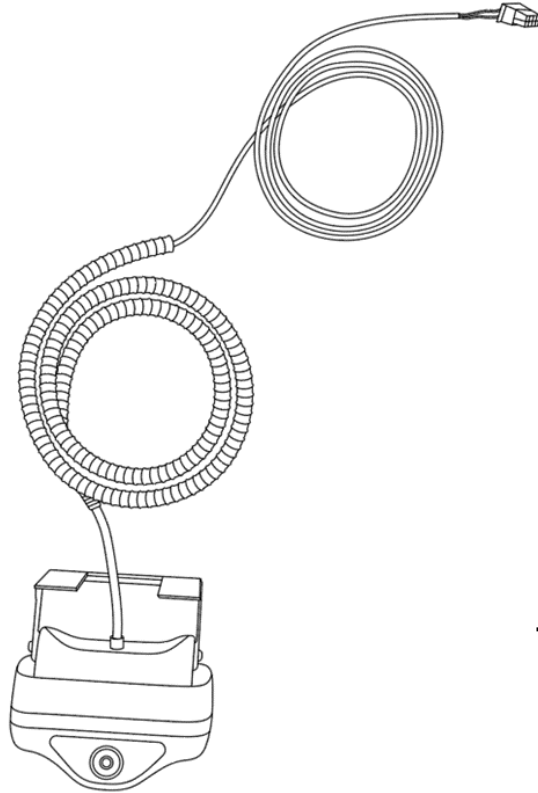


4.

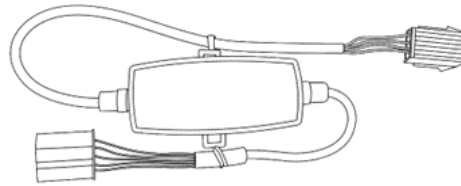


Driver•i™ D-215 Box Content

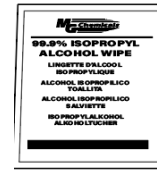
D-215 Box Content



D-215 Driver-i Camera
(QTY : 1)

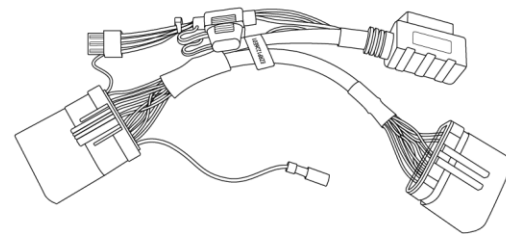


Power/CAN Module
(QTY : 1)

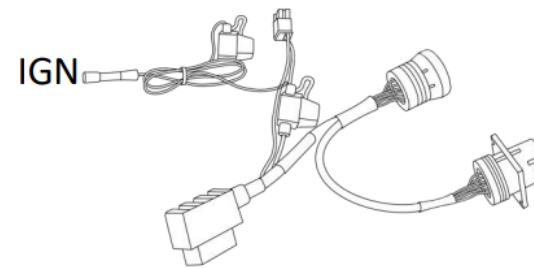


99.9% Alcohol Wipes
(QTY : 2)

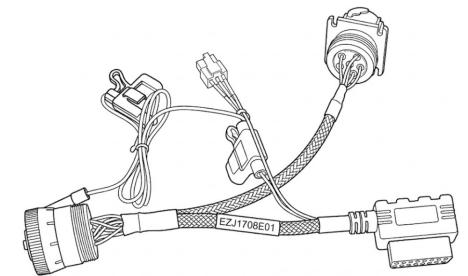
Vehicle Power Adapter Cable Examples



RP1226 Power Adapter
Cable – **EZRP1226E01**



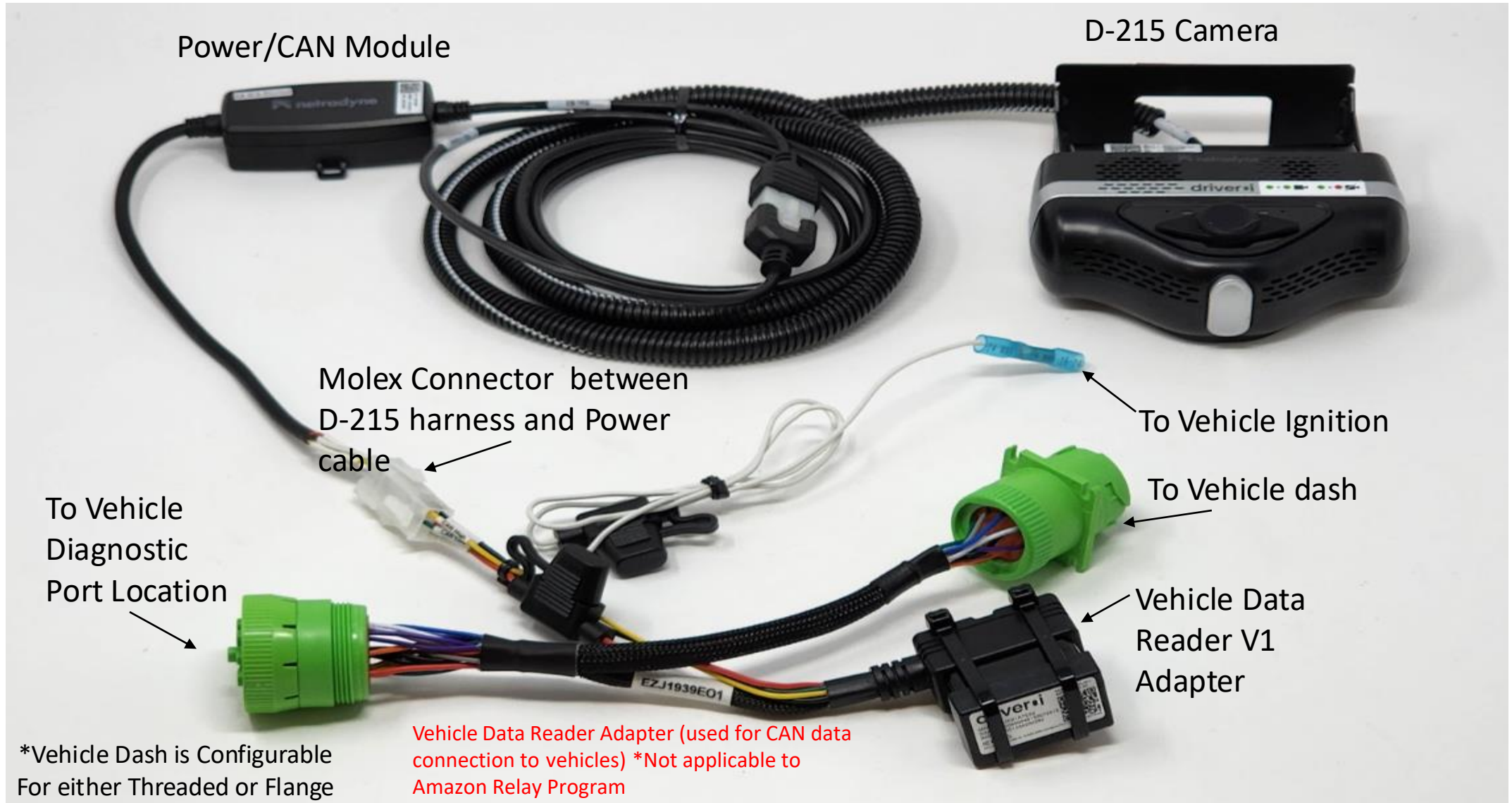
J1939 Power Adapter
Cable – **EZJ1939E01**



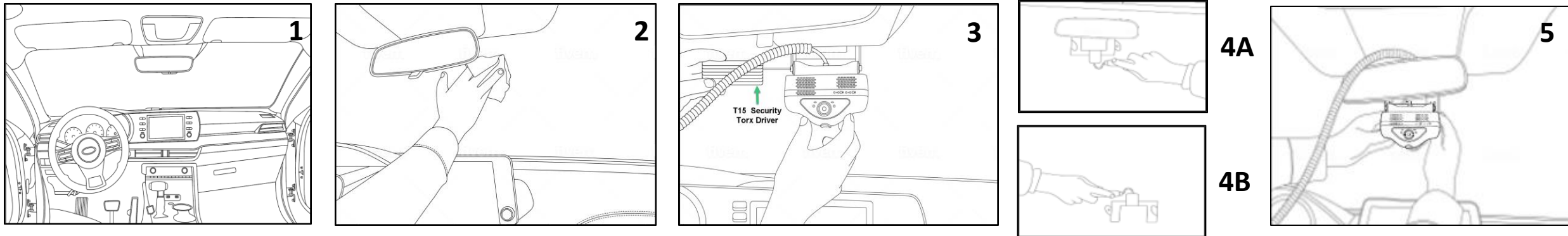
J1708 Power Adapter
Cable – **EZJ1708E01**

Tools Required : T-15 &
T-20 Security Torx Bit.

Driver•i™ D-215

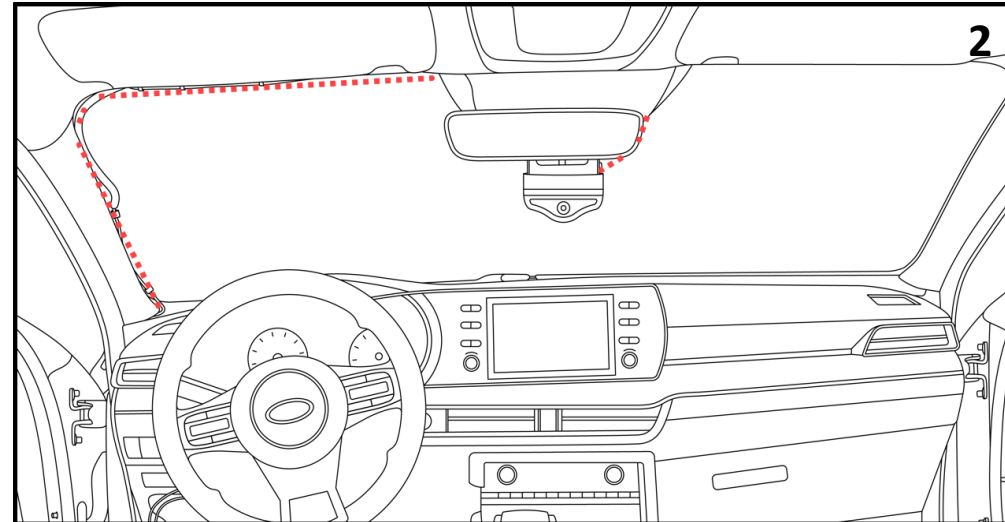
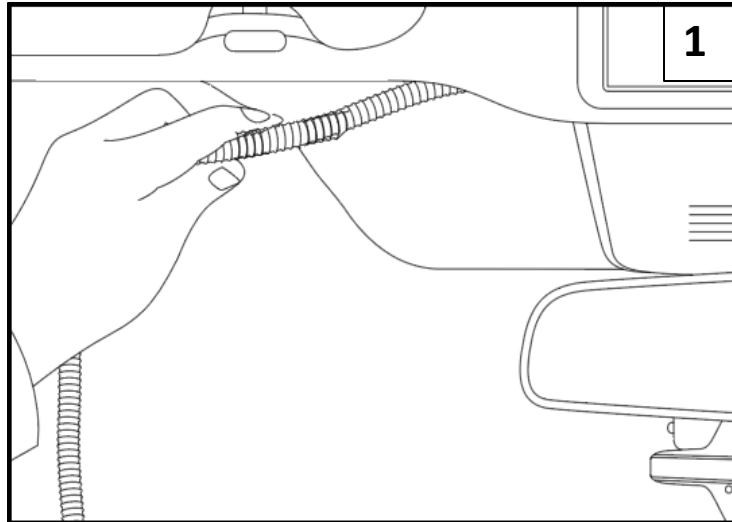


Step 1 : Mount the Driver•i Camera



- Figure 1: Select a mounting location and ensure the **Driver•i** device does not obstruct the driver's line of sight or vision of the road.
- Figure 2: Ensure windshield is clean and dry on the inside of the cabin. Use a 91% or higher alcohol content wipe to clean the mounting area. Use a clean microfiber cloth to remove any additional residue.
Note: Make sure the windshield is warm/at room temperature (approx. 72° F or above) and dry at the mounting location to provide optimal adhesion for the mounting bracket.
- Remove backing seal from two-way tape on the underside of mounting bracket. Attach the mounting bracket to windshield. Place the mounting bracket within the windshield wiper swipe zone. Ensure it is as close to the vehicle centerline as possible.
- Figure 3: Use a **T-15 Security Torx Driver** to loosen **Driver•i** device from the mounting bracket.
- Figure 4A: Remove the **Driver•i** device and apply pressure to the back of the mounting bracket to secure it in place and to remove any air bubbles in between the mounting bracket tape and windshield. We recommend using a seam roller.
- Figure 4B represents the preferred mount orientation on vehicles with no rear-view mirror or other obstructions. (Most class 6 to 8, large vehicles)
- Figure 5: Reattach **Driver•i** device to the mounting bracket using a **T-15 Security Torx Driver** and ensure the device is leveled with road horizon.

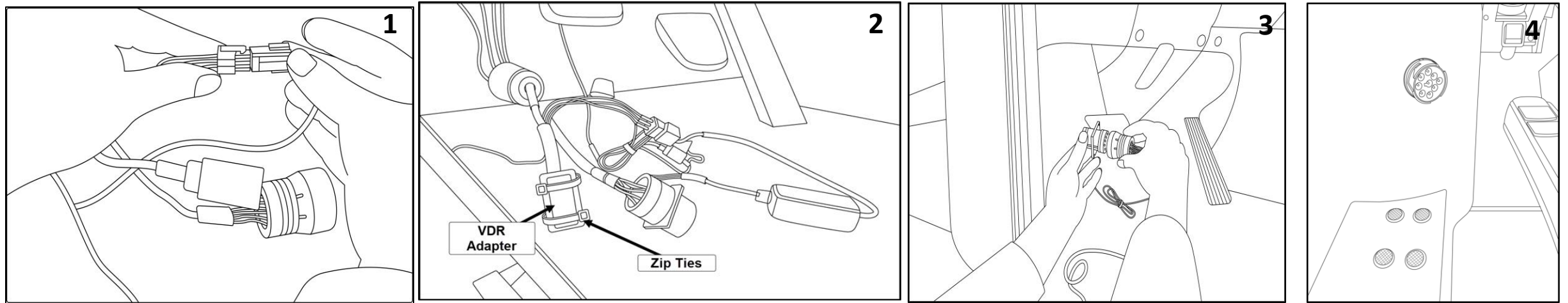
Step 2: Route Cables & Secure Cellular/GPS Module



- Figures 1: Remove the A-pillar cover to route the cable across the top of the headliner and down the driver side A-pillar.
- Figure 2: Secure the cables using zip ties. Ensure the cables and zip ties do not interfere with the deployment of any side airbags.
- From the bottom of windshield side pillar, run the power cable behind dash panels as needed toward the diagnostic port or connection point (ex. J1939 9-pin, J1708 6-pin, fuse panel, OEM-specific connection point).

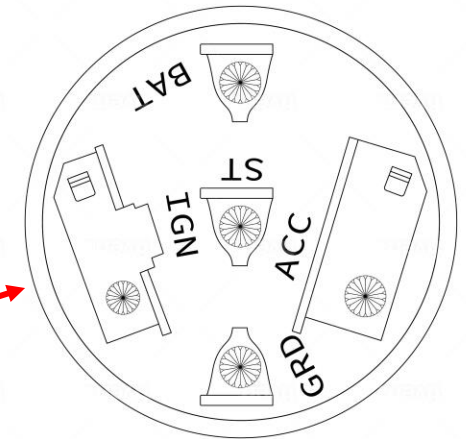
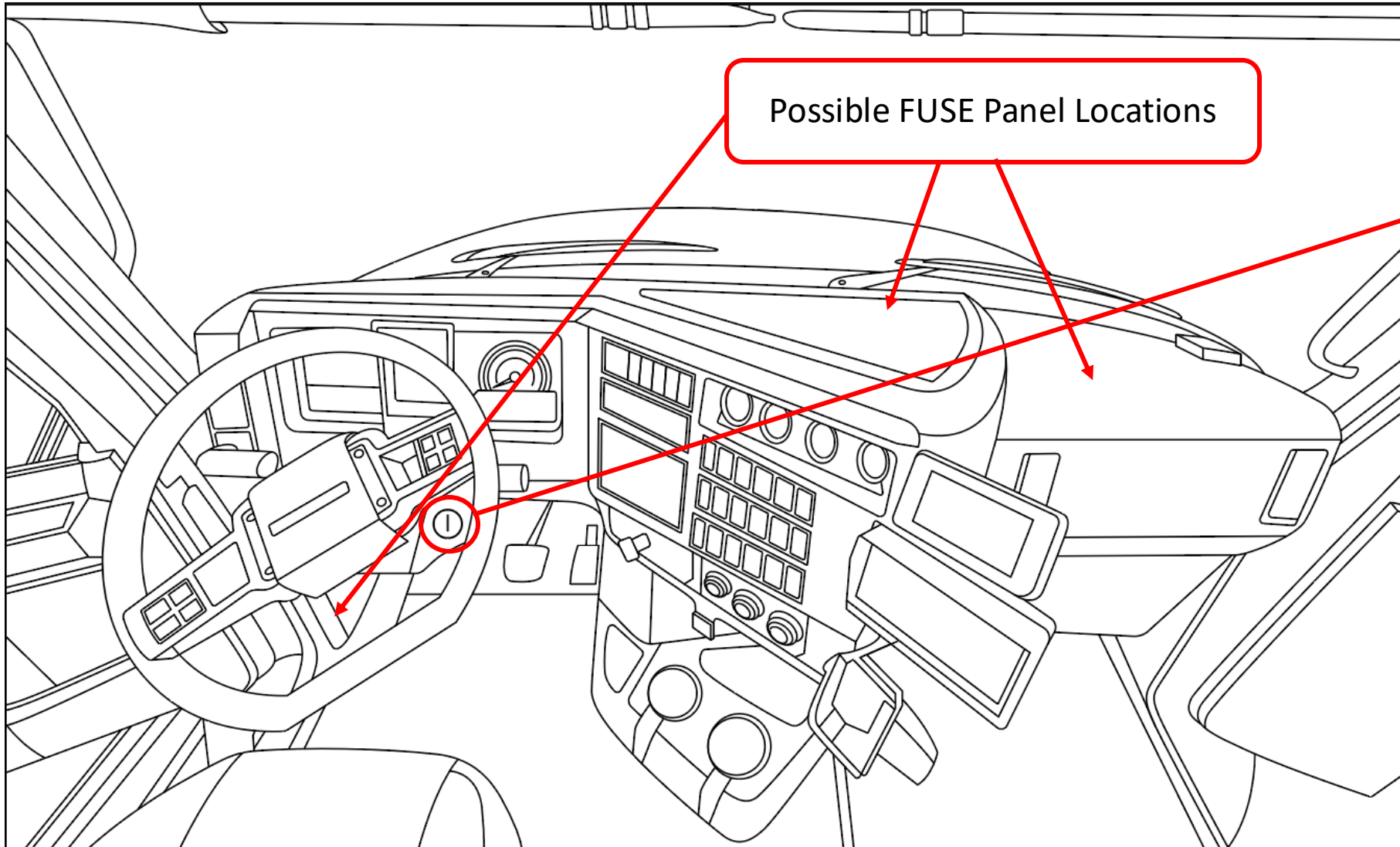
Note: GPS module is internal on the D-215

Connect Driver•i (Example of J1939 Vehicle Power Adapter Cable)



- Figure 1: Ensure **Driver•i device (D-215)** Camera cable is connected to the Power Adapter Cable.
- Figure 2: Remove the vehicle's diagnostic connector (ex. J1939 9-pin) from the original mounting location (ex. kick panel).
- Figure 3: Connect the **Driver•i** device 6-pin Molex plug to the Vehicle Power Adapter Cable, then plug the female diagnostic connector of the adapter cable to the vehicle's male diagnostic port (ex. J1939 9-pin).
- Figure 4: Install the male connector of the Vehicle Power Adapter Cable into the vehicle diagnostic port's original mounting location.
- **On WOM (Wake on Motion) Installations with Vehicle Data Reader Adapter devices, a true Ignition source is required (Not ACC- power ONLY when the key is in the ON position).**
- Bundle excess cabling with supplied zip ties and store/secure, making sure to not interfere with vehicle pedals and other mechanical devices.

True Ignition (IGN)/Not Accessory (ACC) must be connected on all Installs

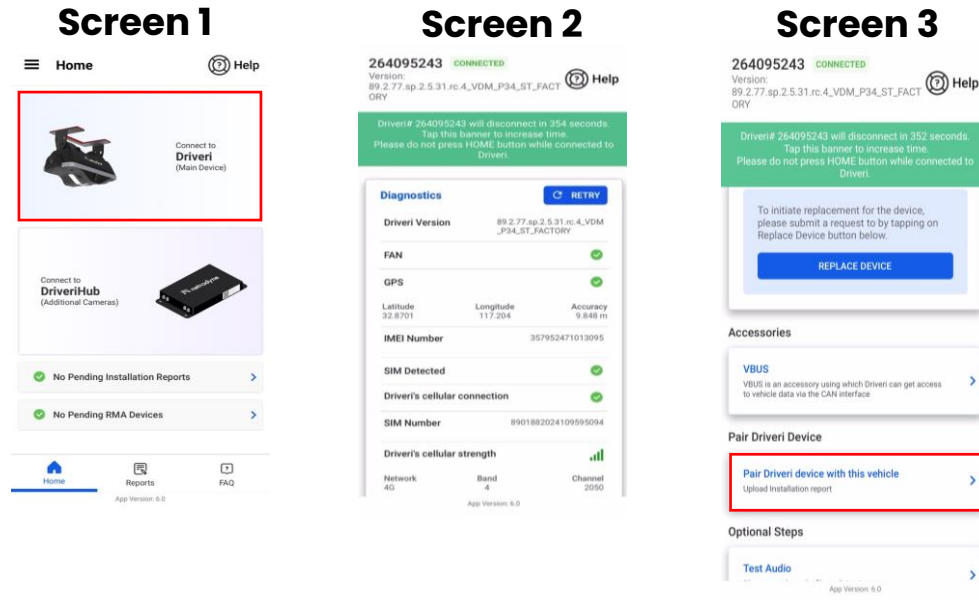


Example of the back side of a typical Ignition Switch.

A true Ignition signal (Not ACC) is usually available either on back of the Ignition Switch or in the fuse panel typically on the passenger side of the dash

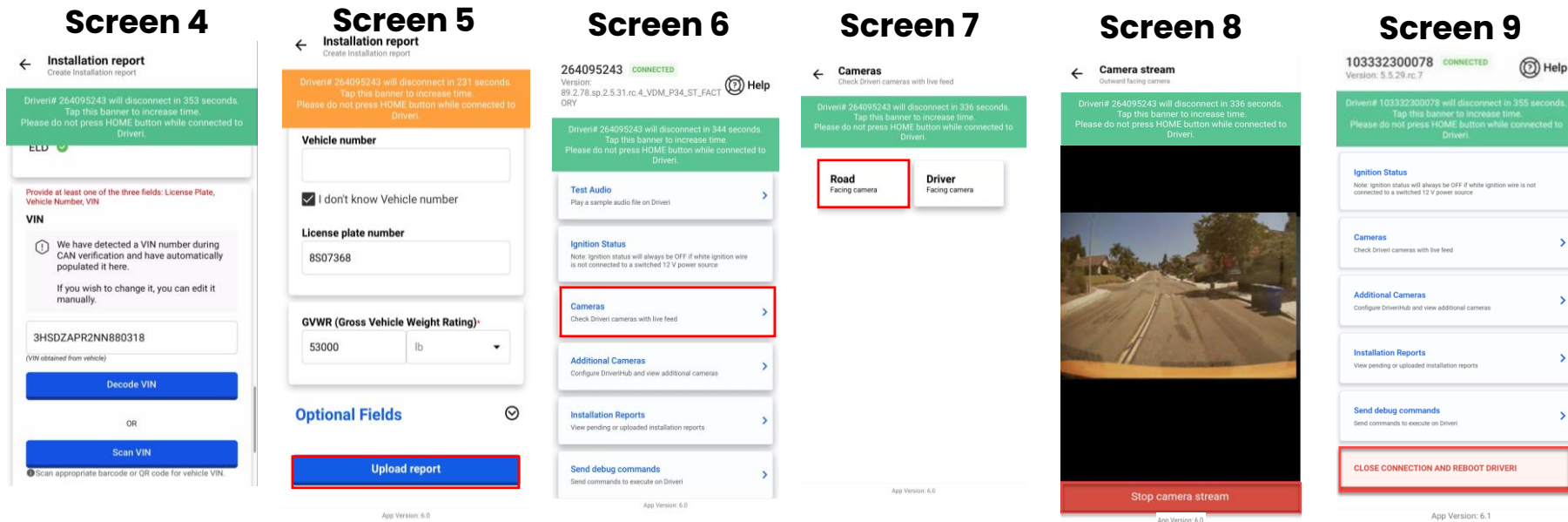
Note: Special cable connections such as RP1226 already have ignition internal to the cable so do not require an external IGN connection.

Step 4 : Verify Driver•i Installation



- Download the Netradyne **“Driver•i Installer App”** from the App Store/Play Store and login using credentials provided by Netradyne or Amazon.
- **Turn the vehicle ignition ON, and verify both Driver•i device LEDs are illuminated.**
 - **Screen 1:** Select **Driver•i** device (main device) and follow on-screen instructions to connect.
 - **Screen 2:** Ensure Diagnostics displays green check marks for the device. If a red **X** is shown for any components, tap the retry button. Please contact support if a red **X** persists. Otherwise, you may continue to pair the device.
 - **Screen 3:** Tap “Pair Driver•i device with this Vehicle” button and fill in requested vehicle information.

Step 4: Verify Driver•i Installation



- **Screens 4–8:** Fill out vehicle information. Once complete, tap the **“Upload Report”** button.
 - You may follow up by testing video feed and audio.
 - When checking cameras with live feed, ensure the outward view captures no more than the upper edge of the vehicle hood. Then ensure inward camera captures the driver’s head, left shoulder and lap area if possible.
- **Screen 9:** To finalize tap **“Close Connection and Reboot Driver•i”** button.

D-215 LED Indicators

LED 1 Status (Left-side LED)	LED 2 Status (Right-side LED)	Description	Possible Solutions
Flashing RED	OFF	Device is booting up and flashing RED should last for 15 seconds.	N/A
OFF or solid RED or flashing RED for more than 15 seconds	OFF	There is an error	Please contact support
GREEN	GREEN	Privacy mode is OFF. Inward camera is ON and recording.	N/A
GREEN	RED	Privacy mode is ON. Inward camera is OFF and not recording.	N/A
GREEN	OFF for more than 15 seconds	There is an error	Please contact support

Note: If driver-facing camera is disabled, LED 2 will always be RED. The Privacy Mode is activated when the vehicle speed is 0 MPH for 3 to 4 minutes. The Camera is ready to record after the 25 seconds boot-up time. After ignition key/vehicle is OFF, camera recording is based on "Recording Options" set by the Safety Manager.

Vehicle Data Reader Adapter LED Indicator: Blinking (any Color) Normal Operation. Solid Red indicates an error state, device needs to be replaced. (See Vehicle Data Reader Adapter LED behavior for more details.)

For questions or escalations, please visit Netradyne Support at www.netradyne.com/support
 Email: support@netradyne.com Phone: (833) GRN-ZONE or 833-476-9663

