

# staynex

## STAYNEX TOKENOMICS

Version 1.0 – Concise Edition for Launchpads & Exchanges



# DUAL-UTILITY MODEL



## **\$STAY Token:** Two Core Value Propositions

### CORE UTILITY #1

---



#### **SHIELD PROTOCOL**

Revenue-funded buy-backs  
+ token value protection

### CORE UTILITY #2

---



#### **OCEAN CLUB**

Global travel membership  
with tiered benefit



CORE UTILITY #1

# SHIELD PROTOCOL

## Revenue-Funded Buy-Back Mechanism

<p><b>Quarterly Allocation:</b></p> <p><b>20%</b></p> <p>of net platform revenue</p>	<p><b>Execution Schedule:</b></p> <p>First week of April, July, October, January</p>	<p><b>First Buy-Back:</b></p> <p>July 2026</p>
--	--	--



# Revenue-Funded Buy-Back Mechanism

## Deflationary Era

Active until circulating supply reaches 30B (70% reduction)

**Phase 1**

### 10% Buy-Back & Burn

Permanent supply reduction, creating scarcity.

### 10% Buy-Back & LP Lock (2-year rolling)

Building liquidity depth for long-term stability.

### Revenue-Funded

20% of net platform revenue allocated quarterly.

## Liquidity Growth Era

Activated after 30B supply milestone

**Phase 2**

### 0% Burn

Deflationary target achieved, optimal scarcity reached.

### 20% Buy-Back & LP Lock (2-year rolling)

Building institutional-grade liquidity depth for seamless high-volume trading.

## 7-Year Governance Checkpoint

Year 7 Review (2033)

**2033**

### Whale Club members vote on:

- Option A > Continue Phase 1 (burn +LP lock)
- Option B > Adjust allocation % (e.g., 15% burn, 5% LP lock)
- Option C > Transition to Phase 2 Liquidity Growth Era (0% burn, 20% LP lock)

## Project Timeline

Conservative revenue modeling projects 5–8 years to reach 30B supply and transition to Phase 2 (Liquidity Growth Era), where 100% of Shield Protocol allocation builds liquidity depth.



# Transparency Commitment



## **Pre-Announcement**

7 days before each quarterly buy-back



## **On-Chain Execution**

All transactions visible on blockchain



## **Post-Buy-Back Report**

Burn proof, LP lock verification, total supply update



# REVENUE SOURCES FUNDING SHIELD PROTOCOL

## 1. Membership Subscription

Save ~15% on 3M+ hotels via [app.staynex.vip](https://app.staynex.vip)



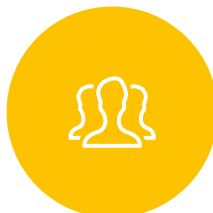
## 2. Hotel Day Passes

Access hotel amenities without overnight stay



## 3. Staynex Vacation Club

4,000+ hotels, Anantara and RCI partnerships



## 4. JetSET Passes

Exclusive events & experiential travel



## 5. Flight Booking Commissions

~3% from airline partners



## 6. AI Travel Wingman

Subscription platform at [ai.staynex.vip](https://ai.staynex.vip)  
(celebrity-endorsed by Patrice Evra)



# TOKEN FUNDAMENTALS

Parameter	Value
Token Name	STAY
Token Standard	BEP-20
Blockchain	BNB Smart Chain
Total Supply	100,000,000,000 (100B fixed)
Launch Price	\$0.00035 USDT
Initial Market Cap	\$1.05M
Fully Diluted Valuation (FDV)	\$35M
Circulating at Launch	3B (3%)
Gas Fee	< \$0.01 per transaction
Block Finality	~3 seconds
DEX	Leading DEX on BNB Smart Chain (TGE)
CEX Listing	Early to Mid 2026 (TBA)
TGE Date	Early to Mid 2026



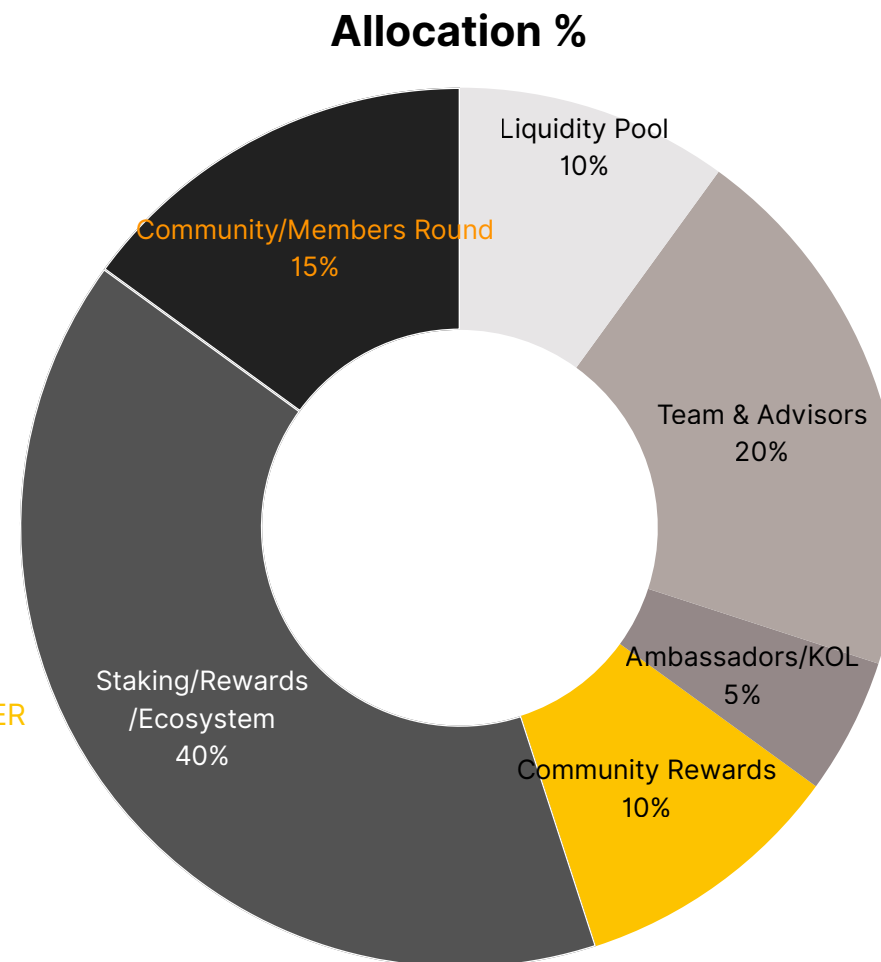
# TOKEN ALLOCATION & VESTING

**Key Safeguards:**

- No team tokens circulating at launch (12-month cliff): Low initial circulating supply (3%) minimizes dump risk.
- Fair launch: No pre-sale or private investor discounts.

Category	Vesting Schedule
Community/Members Round	<b>20% TGE</b> DAILY RELEASING OVER 12 MONTHS
Ambassador/KOLs	<b>72-HOUR CLIFF</b> DAILY RELEASING OVER 12 MONTHS
Liquidity	<b>NO CLIFF</b> RELEASE AT TGE LOCKED AT DEX
Community	<b>3-MONTH CLIFF</b> DAILY RELEASING OVER 24 MONTHS
Staking/Earned/Ecosystem +Booster Tokens	<b>1-MONTH CLIFF  </b> DAILY RELEASING OVER 18 MONTHS
Team/Advisors	<b>12-MONTH CLIFF</b> DAILY RELEASING OVER 36 MONTHS

**3-MONTH CLIFF**  
DAILY RELEASING OVER 24 MONTHS



## CORE UTILITY #2

# OCEAN CLUB

## Global Travel Membership with Tiered Benefits

**Tier Qualification:** Based on 3 or 6 month rolling average \$STAY holdings

Tier	Entry Value	Holding Period	Pass Discount	Staking APY	AI Request/mo	Flight Reward
KOI	\$500	3 months	5%	6%	30	0.5%
DOLPHIN	\$1,500	3 months	10%	7%	100 + Vacation Club	1%
SHARK	\$3,000	6 months	15%	10%	300+ Concierge	1.5%
MANTARAY	\$10,000	6 months	20%	12%	Unlimited + Anantara	2%
WHALE	\$50,000	6 months	25%	15%	Governance & Investments	3%

### Anti-Gaming Mechanism:

- **6-month** rolling average prevents instant tier-jumping.
- **On-chain** tier verification ensures transparency.
- **Automatic demotion** if holdings drop below threshold.



# 8 CORE BENEFITS

## 1. Hotel Day Passes

Tier-based discounts (5–25%) on pool, gym, spa, restaurant access without overnight stay



## 2. JetSET Events

Priority booking and discounts on exclusive experiential passes (Formula 1, Super Bowl, concerts)



## 3. Staynex Vacation Club

Access 4,000+ hotels via Anantara and RCI partnerships



## 4. Travel-to-Earn Rewards

- Flight Cashback: 0.5–3% in \$STAY tokens on flight bookings
- Staking APY: 6–15% rewards for locked tokens
- Liquidity Provider Rewards: 8–20% APY for providing liquidity



## 5. AI Travel Wingman



30–unlimited AI-powered trip planning requests per month (celebrity-endorsed by Patrice Evra)

## 6. Token-Gated Community Access



Exclusive groups:

**Ocean Community** – All tiers

**Elite Council** – Shark+ (concierge channel)

**Whale Club** – Governance, investments, networking

## 7. Monthly Perks



- Hotel/F&B Credits: \$10–\$500 based on tier
- Airport Lounge Passes: Provided by DragonPass
- Lucky Draws: Prizes up to \$10,000
- Transferable Day-Pass NFT Gift Vouchers: 1–10 years validity

## 8. Affiliate Income



Earn 3–20% commission on referrals:

- Eligible Products: Day passes, JetSET, Vacation Club, Flights, AI Wingman
- Excluded: Hotel room bookings (0% commission)
- Anti-Abuse: Self-referrals blocked via KYC matching



# WHALE CLUB EXCLUSIVE BENEFITS

**Requirement:** 6-month rolling average holdings \$50,000 in \$STAY



## Governance Rights

- Vote on:
- Shield Protocol adjustments
  - New partnership approvals
  - Treasury allocation strategies
  - Ecosystem development priorities



## Co-Invest Opportunities

Access to resort property investments with projected 8–18% annual yields



## Quarterly Luxury Gatherings

All-expenses-paid events at global destinations (Maldives, Dubai, Monaco.....)



## Revenue Transparency

Detailed quarterly financial reports shared exclusively with Whale members



## Premium Metal Debit Card

- Tiered Visa/Mastercard:
- Platinum – \$50k+ holdings
  - Black – \$100k+ holdings
  - Diamond – \$500k+ holdings



## Direct Founder Access

Private Telegram channel with leadership team



# FOUNDING 1000 SPECIAL OFFER

**Eligibility:** Top 1,000 holders with minimum 100,000 \$STAY as of June 30, 2026

## Timeline

**Snapshot  
Date:**

June 30, 2026

**Winners  
Announced:**

July 7, 2026

**NFT  
Distribution:**

July 15, 2026



## Exclusive Perks

- **Serial-Numbered NFT Badge:** Collectible proof of early support
- **+1% Lifetime APY Boost:** Permanent staking advantage
- **Priority Support:** Dedicated customer service
- **Launch Event Invites:** Access to global events
- **Early Feature Access:** Beta test new platform features

**Note:** Holdings across multiple wallets consolidated via KYC verification.



# KEY DIFFERENTIATORS

- ✓ **70% Token Burn Target**  
Among the most aggressive deflationary models in crypto
- ✓ **No Hard Time Limit**  
Burns continue until 30B supply reached, ensuring goal completion
- ✓ **7-Year Governance Checkpoint**  
Community-driven decision-making at Year 7
- ✓ **Dual Utility**  
Token value protection + real-world travel benefits
- ✓ **Revenue-Funded**  
No inflationary emissions, buy-backs powered by platform revenue

- ✓ **Self-Funded Since 2022**  
Proven 4+ year track record before token launch
- ✓ **Anti-Gaming Design**  
6-month rolling average prevents tier manipulation
- ✓ **On-Chain Verification**  
Transparent tier qualification and buy-back execution
- ✓ **Real-World Utility**  
3M+ hotels, 4K+ Vacation Club properties, celebrity AI endorsement
- ✓ **Institutional-Grade Liquidity**  
2-year rolling LP locks build deep liquidity pools
- ✓ **Co-Investment Opportunities**  
Whale members access resort property deals (8–18% yields)



A thick yellow line that starts at the top center, goes down, then diagonally up to the right, then diagonally down to the right, then down, then diagonally down to the right, and finally up to the right edge.

**Thank you!**

A thick yellow line that starts at the left edge, goes up, then diagonally down to the right, then down, then diagonally down to the right, and finally up to the right edge.

**staynex**