

全国免费服务热线  
Toll free national hotline

400-859-1108



通快带动科技，科技影响世界

TRUMPF spurs on high tech,  
High tech greatly influences the world



通快电梯(苏州)有限公司

TRUMPF ELEVATOR (SUZHOU) CO., LTD.

地址：江苏省苏州市吴江区318国道（震泽段）

Address: (Zhenze Section) 318 State Line, Wujiang District, Suzhou City, Jiangsu Province, China

电话/Tel: +86-0512-63059230

手机/Mob: +86 13771682580

邮箱/E-mail: meimei@trumpfelevator.com 网址/Http: www.tkd.com.cn

Skype: meimeixie1989

此样本提供的各参数与特性仅供参考，通快保留随时更改产品设计和说明的权利。如有更改，恕不另行通知。  
The parameters and characteristics of this sample provided for reference only, TRUMPF reserves the right at any time to change product designs and descriptions are subject to change without notice.

2017年版印刷



扫描二维码  
进入通快电梯网站



扫描二维码  
关注通快电梯公众微信号

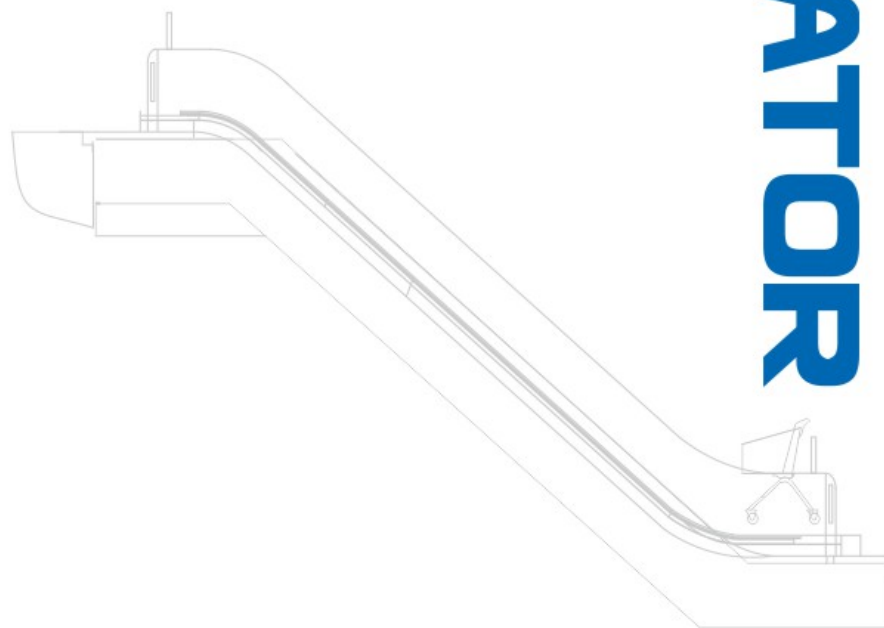


商超定制产品

购物车运输设备

SUPERMARKET

CUSTOMIZED PRODUCT

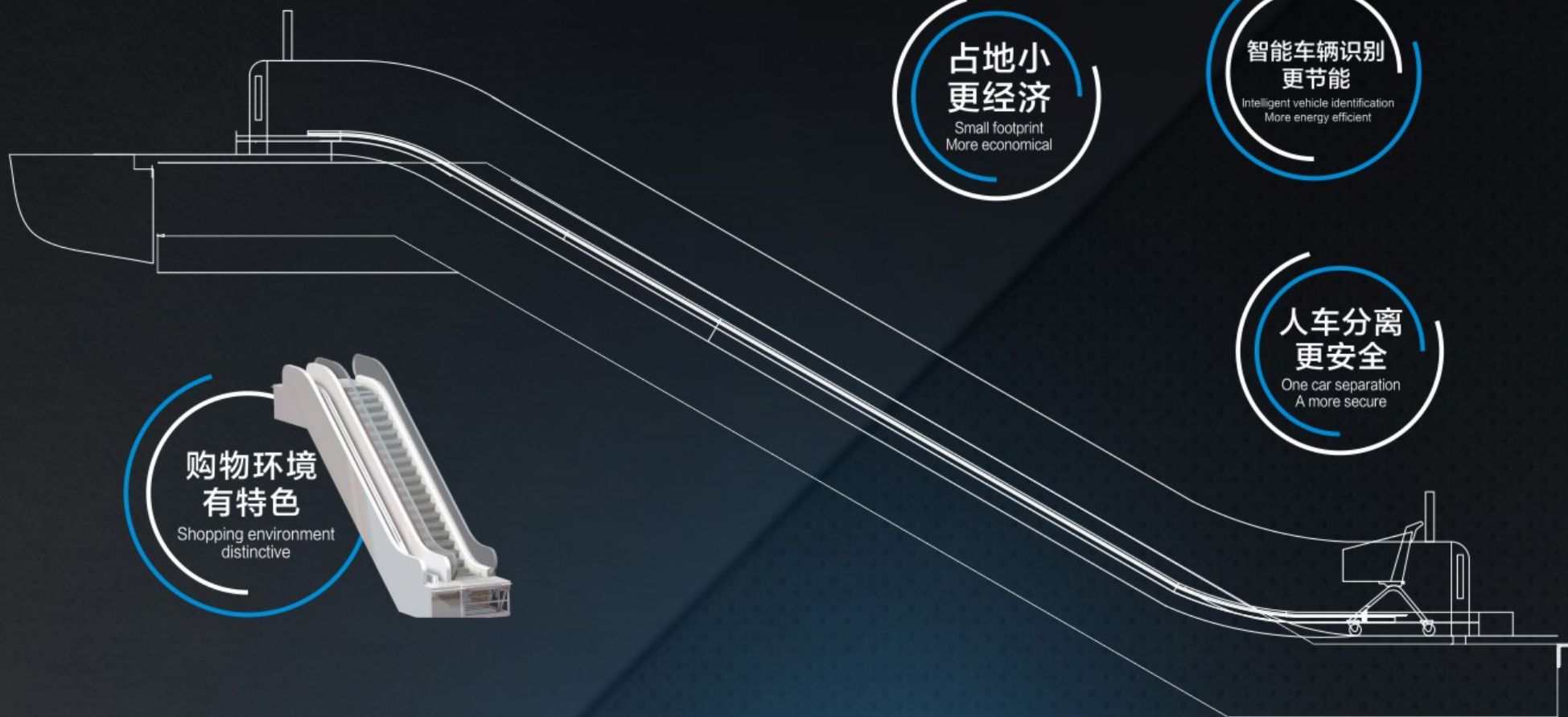


SHOPPING CART  
ESCALATOR

通快电梯(苏州)有限公司

TRUMPF ELEVATOR (SUZHOU) CO., LTD.

# SHOPPING CART ESCALATOR



占地小  
更经济

Small footprint  
More economical

智能车辆识别  
更节能

Intelligent vehicle identification  
More energy efficient

人车分离  
更安全

One car separation  
A more secure

购物环境  
有特色

Shopping environment  
distinctive

## 中国首创 购物车运输设备

迈向明天！我们一直在努力。安全/节能/经济  
通快电梯是中国购物车运输设备制造的首创，  
每一次的创新都是一次物流与安全的革新！

通快带动科技，科技影响世界

## FIRST OF A KIND! SHOPPING CART ESCALATOR FROM CHINA

Safe, energy-saving and economical, we've been making efforts for a better tomorrow.  
TRUMPF is the first of shopping cart escalator manufacturer.  
Every innovation is a revolution of logistics and safety.

TRUMPF spurs on high tech,  
High tech greatly influences the world

## 通快购物车运输设备 全面规划 满足您的整体需求

### TRUMPF SHOPPING CART ESCALATOR Comprehensive planning to meet your needs

通快电梯(苏州)有限公司位于长三角经济区核心地带、秀美怡人的太湖之滨——江苏省苏州市。我们引进德国先进技术,专业从事电梯的研发、设计、制造、安装及维保服务,具有国家特种设备制造安装许可证双A级资质,通过质量管理体系ISO9001, ISO14001, OHSAS18001认证,是中国电梯协会会员。

公司注册资本20009万元整人民币,厂房面积50000多平方米。通过经验积累和国际化运作,产品涵盖自动扶梯、自动人行道、购物车运输设备、乘客电梯、别墅电梯、观光电梯、载货电梯等系列产品,并可根据客户的需求进行特殊设计,最大程度满足用户多样化的需求,更注重把每台电梯打造成科学与艺术完美融合。

通快电梯产品从研发设计到市场销售,经历不断的测试和改进,我们的设计团队具有丰富经验和高新技术研发能力,并在新兴领域中获得多项专利,公司对产品的组装工艺要求和检验规范执行,每个环节要求严格谨慎。我们以客户为关注焦点,以客户满意为产品和服务工作的评价标准,为满足不同国家、地区、用户、层次的需要,公司建立起从电梯设计、制造、安装、维保一条龙的高效服务体系,确保顾客无后顾之忧。

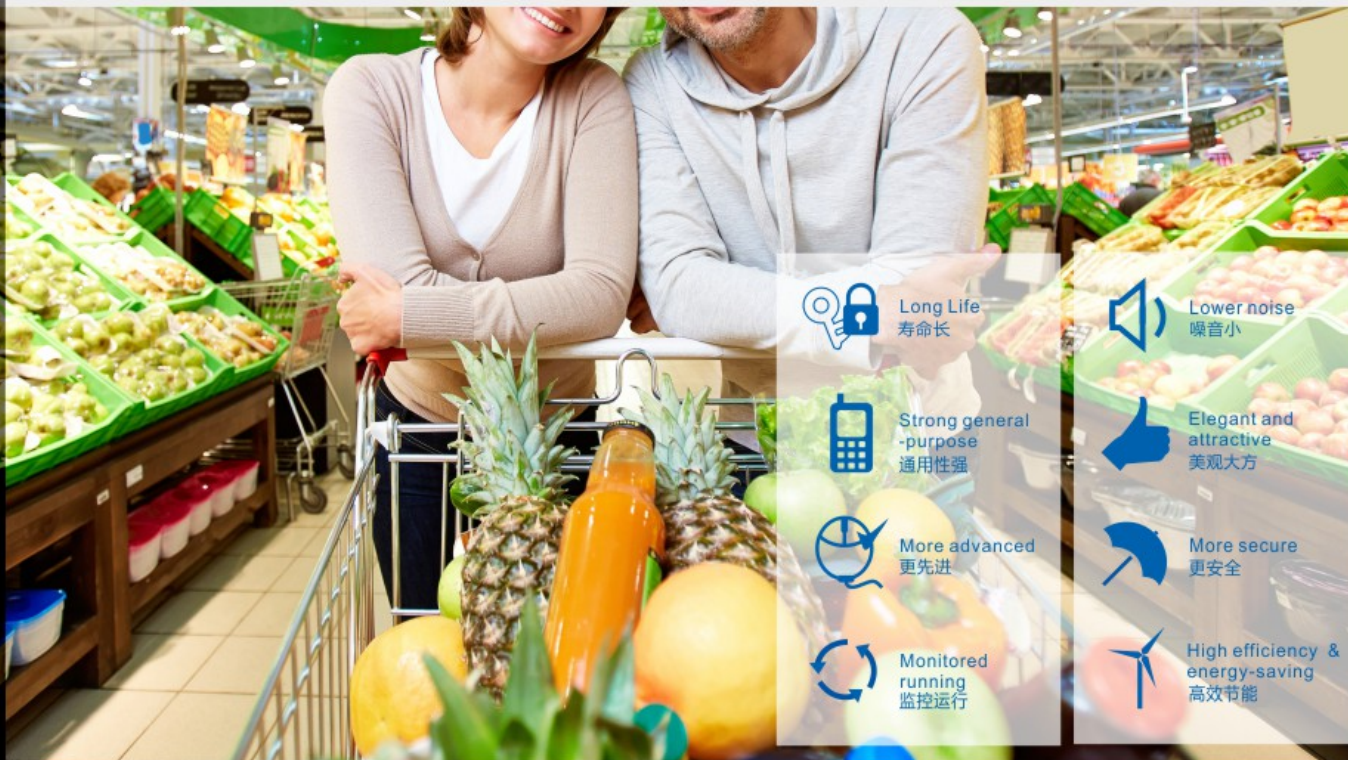
通快,因为专业,所以信赖!通快带动科技,科技影响世界!

TRUMPF Elevator (Suzhou) Co., Ltd. is located in Suzhou City of Jiangsu Province, China in core area of Changjiang River Economic Zone. It is situated along the beautiful Taihu Lake. We introduce advanced German technology. It specializes in researching into, developing, designing, manufacturing, installing, repairing and maintaining various elevators. It has qualifications of "China Special Equipment Manufacture Safety License". It passes Quality Supervision System ISO9001, ISO14001, OHSAS18001 Certification. It is member of China Elevator Association.

Registered capital is 200,090,000RMB. Factory houses cover an area of over 50,000 square meters. It applies experience accumulation and internationalized operation. The products cover escalator, moving walk, shopping cart transport equipment, passenger elevator, villa elevator, observation elevator, freight elevator series etc. We can specially design elevators according to the clients' requirements. It satisfies diverse demands from vast customers to maximum extent. Furthermore, it perfectly integrates with artistic and scientific elevators into one.

From research; design to market sales, TRUMPF elevators go through continuous tests and improvements. Our design teams have rich experience, high & new tech R & D capacities. It gets multiple patents in rising fields. The product assembly craft & technology requirements, inspections have been executed according to standards. We strictly and cautiously require every sector. We focus upon the clients' requirements. We take "the customers, satisfactory products and service works" as assessment standard. In order to meet the needs from different countries; regions; users and levels, the company establishes one-continuous-line effective service systems from elevator design; manufacture to installation; repair and maintenance. Therefore vast clients can rest assured in purchasing and using TRUMPF elevators.

Professional works bring about trustworthy TRUMPF elevators! TRUMPF spurs on high technology which greatly influences the world!



Long Life  
寿命长



Lower noise  
噪音小



Strong general-purpose  
通用性强



Elegant and attractive  
美观大方



More advanced  
更先进



More secure  
更安全



Monitored running  
监控运行



High efficiency & energy-saving  
高效节能

### 通快购物车运输设备,方便您的购物之旅

TRUMPF Shopping cart escalator is convenient for your shopping trip.



# SHOPPING CART ESCALATOR

## 细节显真章 通快购物车运输设备标准装置

DETAIL DISPLAY QUALITY  
TRUMPF shopping cart escalator standard device

### a.故障报警提示 Fault alarm

当设备出现故障时，安装在上部出入口处警报灯旋转亮起。

When the device fails, the alarm light is turned on at the upper entrance.

### b.购物车到达提醒 Shopping Cart arrival reminder

当购物车到达出口时，在入口处的感应装置动作，限高门的灯会自动亮起提示使用者购物车已到达。

When the shopping cart arrives at the exit, the sensor will be automatically turned on at the entrance of the induction device, indicating that the user's shopping cart has arrived.

### c.安全防护门 Security door

防止人员或其他物体进入购物车运行轨道内，或将其当作滑梯玩耍。

Prevent people or other objects from entering the shopping cart or playing it as a slide.

### d.出入口停止开关 Entrance stop switch

上下出入口处的紧急停止开关，可使设备停止运行。

The emergency stop switch at the upper and lower entrances can stop the device from running.

### e.入口安全保护 Entrance security protection

当异物夹入传动链入口处时起保护作用。

Prevent foreign materials from entering the entrance of transmission chain.

### f.故障显示方向运行 Fault indication direction running

当设备停运或有异常时，在下部入口处有液晶显示器显示故障代码，便于查找故障来源作用。

When the equipment is shut down or abnormal, the LCD display fault code is displayed at the lower entrance, which is convenient to find the fault source.

### g.启动开关 Start switch

a.故障报警提示

b.购物车到达提醒

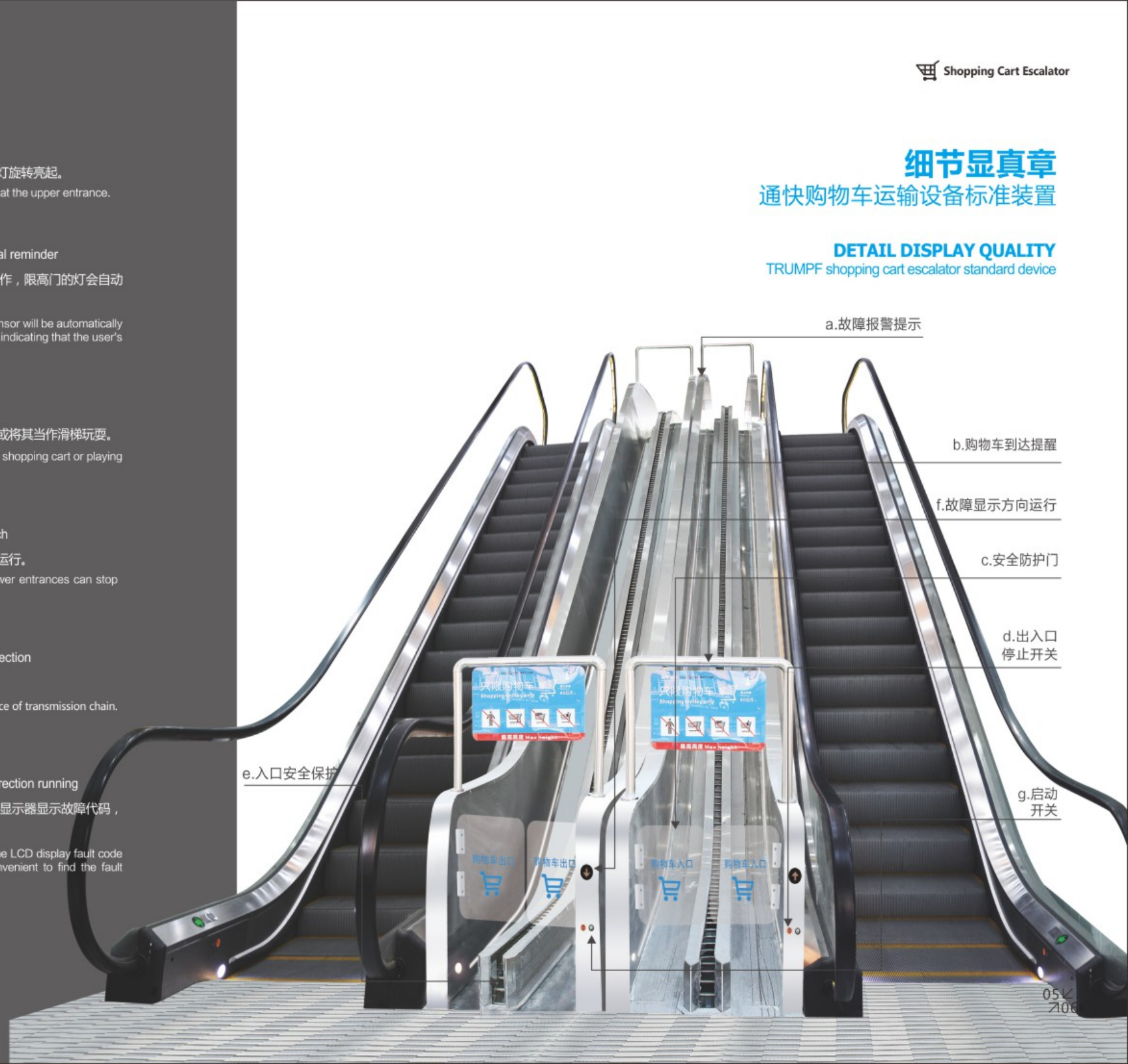
f.故障显示方向运行

c.安全防护门

d.出入口  
停止开关

g.启动  
开关

e.入口安全保护

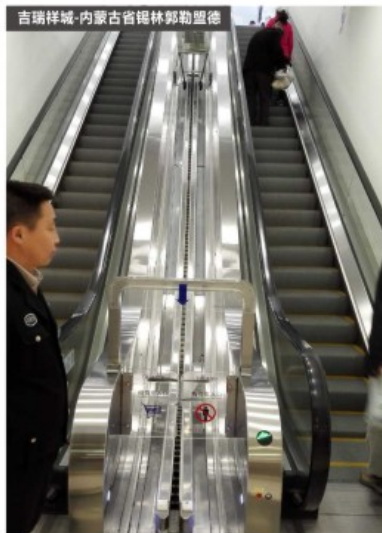


# 通快购物车运输设备

工程案例

## TRUMPF SHOPPING CART ESCALATOR

Engineering case



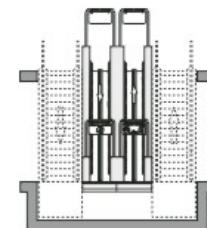
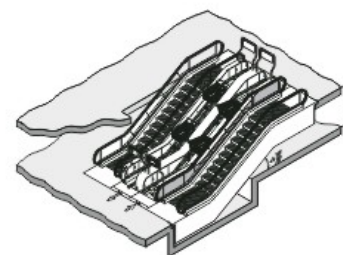
# 布置方案

合理布置 科学的规划

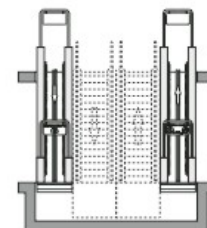
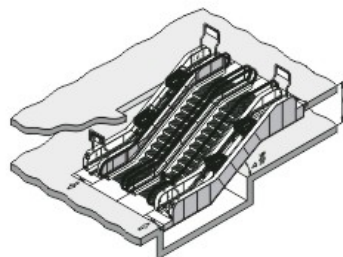
## ARRANGEMENT

Logical Arrangement Systematic Layout

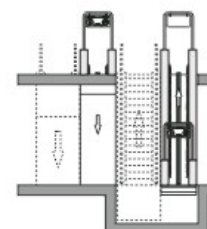
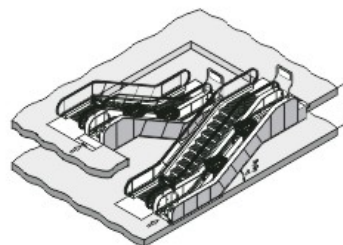
A 方案  
Plan A



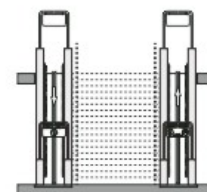
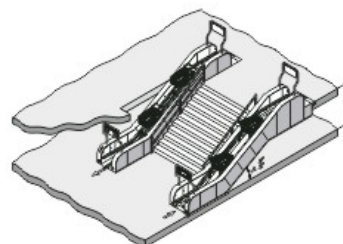
B 方案  
Plan B



C 方案  
Plan C



D 方案  
Plan D



# 通快购物手推车系列

TRUMPF SHOPPING TROLLEYS SERIES

## 购物手推车简介

主车体框架采用高强度硬质拉钢椭圆型管材，主梁材料一次性成型，整体焊接工装自动机械手焊接，篮筐采用实心圆钢整体焊接，表面底层采用镀锌处理，表面电泳或喷涂防腐处理，整车结构设计合理，符合各项安全指标，坚固耐用，90L的承载能力小于100KG，125L的承载能力小于130KG。

## Trumpf shopping trolley introduction

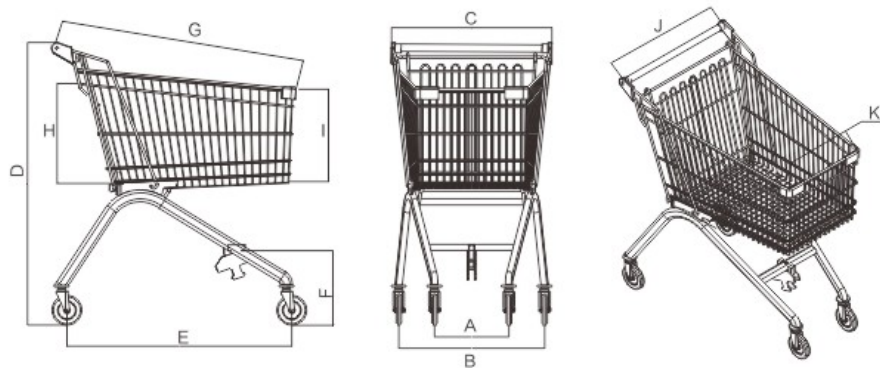
Main body frame of the trolley is made by high-strength hard drawn steel. Crossbeam is made by compression molding technology, integrally welded by autonomous robots. Basket is integrally welded with solid round steel, undercoat is galvanized, surface is electrophoresis or spray corrosion processed. The whole part is designed rationally, durable and meets virtually all kinds of safety requirements. Max loading capacity of 90L trolley is 100KG, max loading capacity of 125L trolley has reached 130kg.



BT 4 "单轮PU  
BT 4 " single wheel PU



BT 4 "双片电梯轮  
BT 4 "double - piece elevator wheel



小车型号 Trolley model	前轮开档A Distance between front wheels	后轮开档B Distance between rear wheels	手柄宽度C Handle width C	手柄宽度D Handle width D	前后轮截面距E Front and rear wheel sections are E	挂钩C型管底部F Hook C type pipe bottom high F	轮径 Wheel diameter	篮筐容积 Basket capacity	手推车尺寸 Trolley size G×H×I×J×K
TKG-90L	235	480	520	953	765	234	101.6	90L	730×400×270×465×330
TKG-125L	235	480	520	1015	765	234	101.6	125L	750×460×270×470×335

# SHOPPING CART ESCALATOR FUNCTION TABLE

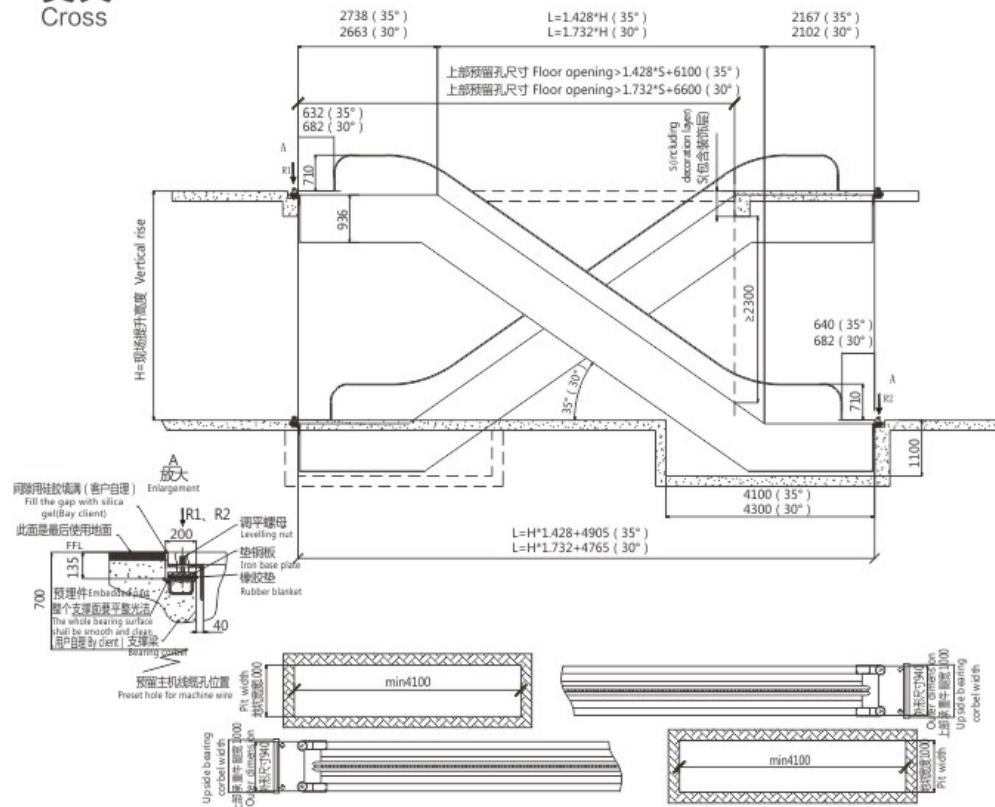
## 购物车运输设备功能表

购物车运输设备标准功能 · Standard function for shopping cart escalator		
1	单向运行 Single-way operation	操作上下出入口处钥匙开关可实现单向运行。 Operate the key switches at upper/lower entrance to put the escalator into operation.
2	检修运行 Overhaul operation	操作检修盒，可进行检修上下行的点动慢行。 Operation overhaul box, can be carried out on the trip up and down the slow line.
3	机房回站防护 Room switch station protection	将机房与运动部件隔离，提供检修维护的安全空间。 The room and the moving parts of the isolation, to provide maintenance and maintenance of the security space.
4	出入口停止开关 Entrance stop switch	上下出入口处的紧急停止开关，可使设备停止运行。 The emergency stop switch at the upper and lower entrances can stop the device from running.
5	机房停止开关 The machine room	设置在转向站（上下机房）控制柜上，当检修维护发生危险或存在可能时，使设备停止运行或防止其启动。 Set up in the steering station (upper and lower engine room) control cabinet, when the maintenance of the maintenance of dangerous or possible, so that the device to stop running or to prevent its start.
6	传动链安全保护 Transmission chain protection	当传动链断裂，过分伸长或无意性伸长与缩短时起保护作用。 Protects the drive chain from breaking, overstretching or unintentional elongation and shortening.
7	入口安全保护 Entrance foreign materials protection	当异物夹入传动链入口时起保护作用。 Prevent foreign materials from entering the entrance of transmission chain.
8	防回站保护 Do not protect the protection	当购物车超高或在运行时人员进入时起保护作用。 When the shopping cart is ultrahigh or in the operation of personnel to play a protection effect.
9	勿入保护 Do not protect	当设备正常运行时，在出入口处有安全自动门，来感应车辆进出自动开门和关门，人员和物体禁止进入，如强行进入设备停止运行起保护作用。 When the equipment is running normally, there is a safe automatic door at the entrance and exit to induce the vehicle to open and close the door and close the door, personnel and other objects can not open the door, such as forced into the equipment to stop running from the protection.
10	相序保护 Phase sequence protection	当供电电源缺相或错相时起保护作用。 When the power supply phase lack or phase dislocation when the role of protection.
11	短路保护 Short circuit protection	当电力回路短路时起保护作用。 When the power circuit short circuit protection.
12	过载保护 Overload protection	当电机持续过载时起保护作用。 Protect the motor when the motor continues to overload.
13	接地故障监测 Ground fault monitoring	安全回路发生接地故障时起保护作用。 Protection of safety circuit when grounding fault occurs.
14	故障显示 Fault display	当设备停运或有异常时，在下部出入口处有液晶显示器显示故障代码，便于查找故障来源作用。 When the equipment is shut down or abnormal, the LCD display fault code is displayed at the lower entrance, which is convenient to find the fault source.
15	电动机过热保护 Motor overheat protection	监控电动机定子绕组温升状态，当温度超过设定值时起保护作用。 Monitor the motor stator winding temperature rise state, when the temperature exceeds the set value when the protective effect.
16	楼层板开启监测 Floor board open monitoring	移去或打开楼层板后，设备将停止运行或防止其启动（检修运行除外）。 When the floor board is removed or opened, the device will stop running or prevent it from starting (except for maintenance).
17	工作制动器释放监测 Work brake release monitoring	监控工作制动器制动臂释放状态，防止其未释放时设备启动。 Monitor the brake brake arm release state to prevent it from starting when the device is not released.
18	购物车到达提醒 Shopping Cart arrival reminder	当购物车到达出口时，在入口处的感应装置动作，最离门的灯会自动亮起提示使用者购物车已到达。 When the shopping cart arrives at the exit, the sensor will be automatically turned on at the entrance of the induction device, indicating that the user's shopping cart has arrived.
19	安全防护门 Security door	防止人员或其他物体进入购物车运行轨道内，或将其当作滑梯玩耍。 Prevent people or other objects from entering the shopping cart or playing it as a slide.
20	主接触器防粘连监测 Main contactor anti-adhesion monitoring	主接触器粘连时，防止扶梯启动。 When the main contactor is adhered, prevent the escalator from starting.
21	钥匙开关防粘连监测 Key switch anti-adhesion monitoring	钥匙开关一直处于上行或下行位置时起保护作用。 The key switch is protected when it is in the up or down position.
22	手提行灯 Hand-held lights	放置在驱动站（上机房）或转向站（下机房）的某一处，通过控制柜上的插座获得电源，供给检修维护人员作为移动照明使用。 Placed in the drive (upper room) or steering station (lower room) somewhere, through the control cabinet socket to obtain power for maintenance personnel as a mobile lighting use.
23	故障报警提示 Fault alarm	当设备出现故障时，安装在上部出入口处报警灯旋转亮起。 When the device fault, the alarm light is turned on at the upper entrance.
24	自动润滑 Automatic lubrication	由控制系统定时定量对传动链、主驱动链、滑动轨道等处进行定点定量自动加油润滑。 By the control system timing quantitative on the drive chain, the main drive chain, sliding track, etc. to determine the point of automatic filling and lubrication.
25	警铃 Bells	设备通过钥匙开关启动时响铃提醒。 The device is activated by the key switch when the bell is reminded.
26	停止节能模式 Stop the energy saving mode	无车辆进入时以停止节能状态，当车辆在入口进入时以正常速度运行。 No vehicle has been stopped when the energy-saving state, when the vehicle enters the entrance to the normal speed of operation.
27	主驱动链监测 Main drive chain monitoring	当主驱动链断裂或过长时起保护作用。 When the main drive chain is broken or too long to protect the role.

# TG-2000

购物车运输设备土建示意图  
Shopping Cart Escalator Construction Layout Diagram

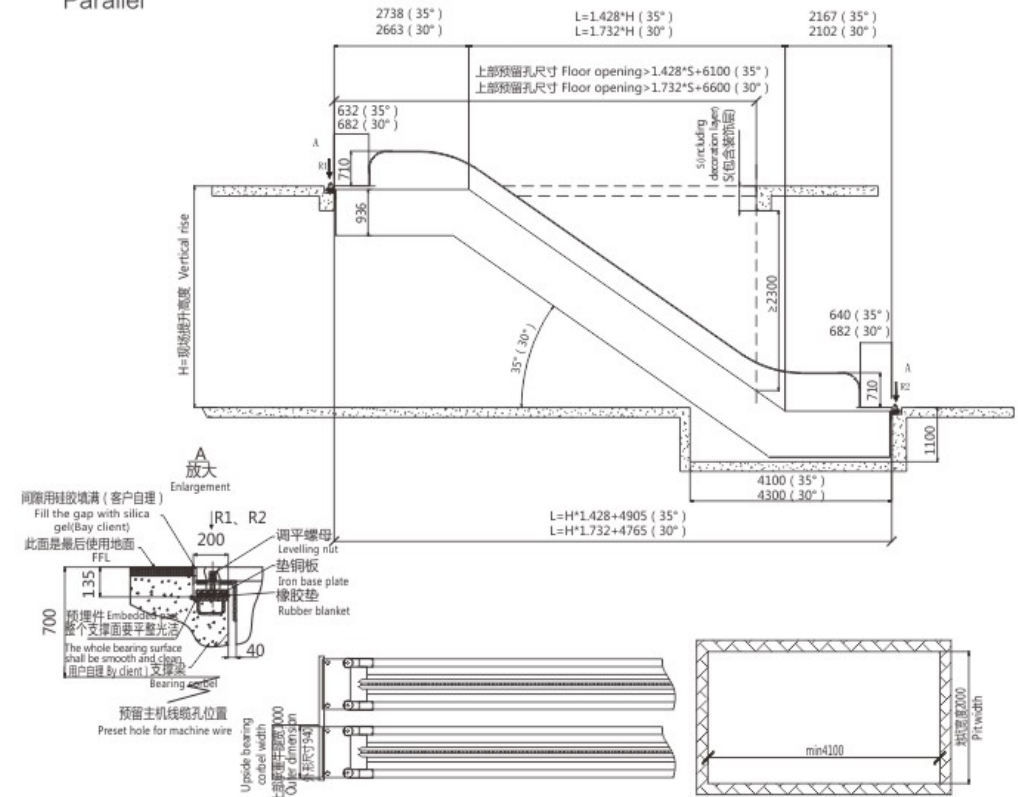
## 交叉 Cross



# TG-2000

购物车运输设备土建示意图  
Shopping Cart Escalator Construction Layout Diagram

## 并联 Parallel



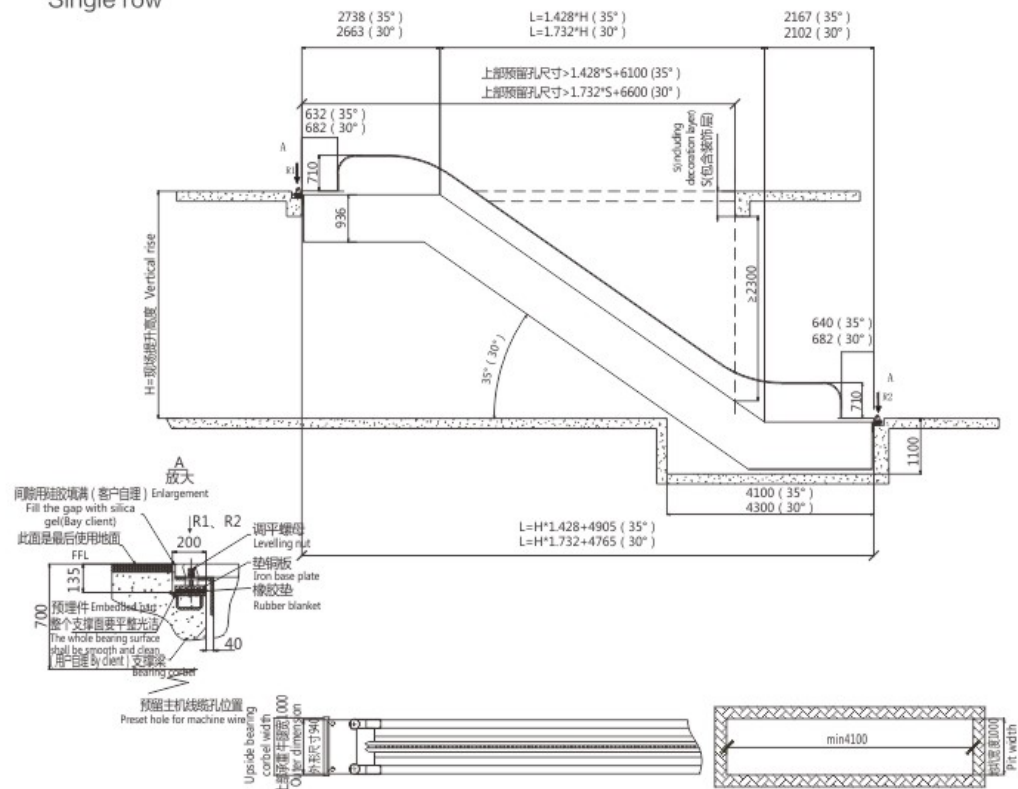
提升高度 H(mm) Vertical rise	35			30		
	水平跨距L(mm) Horizontal length	支撑力R1(KN) Bearing force	支撑力R2(KN) Bearing force	水平跨距L(mm) Horizontal length	支撑力R1(KN) Bearing force	支撑力R2(KN) Bearing force
3000	9189	50	38	9961	52	40
3500	9903	52	40	10827	54	42
4000	10617	54	42	11693	57	45
4500	11331	56	44	12559	60	48
5000	12045	58	46	13425	62	50
5500	12759	60	48	14291	65	53
6000	13473	62	50	15157	67	55

提升高度 H(mm) Vertical rise	35			30		
	水平跨距L(mm) Horizontal length	支撑力R1(KN) Bearing force	支撑力R2(KN) Bearing force	水平跨距L(mm) Horizontal length	支撑力R1(KN) Bearing force	支撑力R2(KN) Bearing force
3000	9189	50	38	9961	52	40
3500	9903	52	40	10827	54	42
4000	10617	54	42	11693	57	45
4500	11331	56	44	12559	60	48
5000	12045	58	46	13425	62	50
5500	12759	60	48	14291	65	53
6000	13473	62	50	15157	67	55

# TG-2000

购物车运输设备土建示意图  
Shopping Cart Escalator Construction Layout Diagram

## 单列 Single row

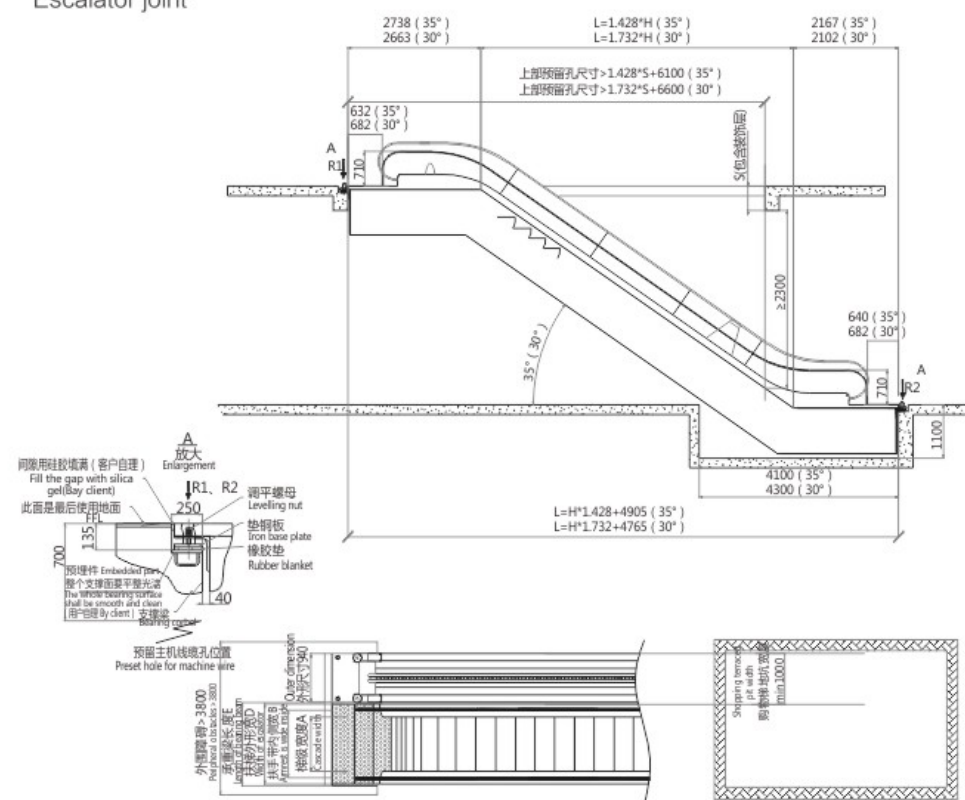


提升高度 H(mm) Vertical rise	35			30		
	水平跨距L(mm) Horizontal length	支撑力R1(KN) Bearing force	支撑力R2(KN) Bearing force	水平跨距L(mm) Horizontal length	支撑力R1(KN) Bearing force	支撑力R2(KN) Bearing force
3000	9189	50	38	9961	52	40
3500	9903	52	40	10827	54	42
4000	10617	54	42	11693	57	45
4500	11331	56	44	12559	60	48
5000	12045	58	46	13425	62	50
5500	12759	60	48	14291	65	53
6000	13473	62	50	15157	67	55

# TG-2000

购物车运输设备土建示意图  
Shopping Cart Escalator Construction Layout Diagram

## 自动梯并列 Escalator joint



提升高度 H(mm) Vertical rise	35			30		
	水平跨距L(mm) Horizontal length	支撑力R1(KN) Bearing force	支撑力R2(KN) Bearing force	水平跨距L(mm) Horizontal length	支撑力R1(KN) Bearing force	支撑力R2(KN) Bearing force
3000	9189	50	38	9961	52	40
3500	9903	52	40	10827	54	42
4000	10617	54	42	11693	57	45
4500	11331	56	44	12559	60	48
5000	12045	58	46	13425	62	50
5500	12759	60	48	14291	65	53
6000	13473	62	50	15157	67	55