

projects.



EDA CONTRACTORS





contact.

edacontractors.com

215.638.3500

Estimating@edacontractors.com

PA Office
633 Dunksferry Road
Unit A
Bensalem, PA 19020

NJ|NY Office
669 Division Street
Elizabeth, NJ 07201

Ewing Office
4 Industry Court,
Ewing Township, NJ 08638

Labor Workforce:

Union

Areas of Service:

Pennsylvania, New Jersey, New York, Delaware, Maryland

Surety:

Bonding Capacity:
\$30 Million per project
\$110 Million per aggregate

Insurance:

PA EMR: 0.782

NJ EMR: 0.466

NY EMR: 0.850

Affiliations:

United Union of Roofers, Water-proofers and Allied Workers

Roofers Local 30, Local 4, Local 10, and Local 8

Metropolitan Regional Council of Carpenters

Eastern Atlantic States Regional Council of Carpenters (PA/Phila/NJ)

North Atlantic States Regional Council of Carpenters (NY State - Local 279, 290, 291)

International Regional Council of Carpenters National Agreement

Masonry Local 1, Local 4 & 5, Local 332, Local 77, and Local 542

■ about eda. 04

■ building envelope. 08

■ notable projects. 16



we are eda.

EDA Contractors specializes in the exterior envelope of all commercial, institutional, and industrial buildings. Our areas of expertise include Architectural Wall Panels & Accessories, Roofing, Masonry, Waterproofing, Air & Vapor Barrier, Green Roofing Systems, Historical Restoration, and Various Specialty Components. Our commitment to the quality of our work is backed by the industry-leading EDA Envelope Warranty, a 10-year watertight guarantee.

Top Workplace

EDA's award-winning culture fosters personal and professional development within teams, unique services, and successful relationships with clients. We are proud to have received Top Workplace awards in both Pennsylvania and New Jersey, as well as a Highwire Gold Safety Award. These awards show a dedication to our employees, their safety, and demonstrate our promise of being **successful together.**





our culture.

Our Mission

EDA is committed to providing our customers with services that represent the pride we have in who we are and what we provide. We are dedicated to self-improvement that extends beyond the services we offer and into the lives of all who make contact with us.

Below is a snapshot of the culture that EDA strives to cultivate everyday.

Our Values



SMILE, LAUGH
ENJOY LIFE



LIVE
PROACTIVELY



BUILD
TRUST



WORK
PROUD



EXCEED
EXPECTATIONS



BE
PASSIONATE



DEMONSTRATE
HUMILITY



STRIVE TO
IMPROVE

Our Promise

EDA is committed to excellent workmanship while creating a positive experience for our customers, partners, vendors and employees. We promise hard work, passion, creativity, respect, and care, to everyone we work with. Each day we strive to deliver excellence and achieve our promise of being **successful together.**

Diversity, Equity, and Inclusion

EDA is at the forefront of diversity, equity, and inclusion in the construction industry. We are proud to offer the following opportunities to help achieve our commitment to diversity:

- **EDA Women in Construction Committee:** This committee strives to empower women in the construction industry to achieve their professional goals, as well as create opportunities to network and learn from each other.
- **EDA PACT (Personal Accountability Changes Today) Program:** This program provides a safe, caring, judgment-free resource for EDA employees seeking relief from substance abuse.
- Through town halls, meetings, and leadership classes, EDA creates additional opportunities to have a dialogue around diversity, equity, and inclusion.

our services.



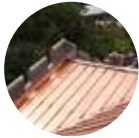
Backup Framing



Air & Vapor Barrier



Opaque Exterior Wall Systems



Low Slope & Steep Slope Roofing



Green Roofing & Amenity Decks



Waterproofing



Masonry



Historic Metal Restoration & Slate Roofing



Architectural Glass & Metal

What is the EDA Envelope Warranty?

At EDA Contractors, our primary goal is to deliver a watertight building to every client. We provide a 10-year installation warranty on every project where we deliver multiple scopes on the building enclosure. This makes the EDA Envelope Warranty the gold standard for building envelope risk management.

Leaks through the exterior building envelope can lead to finger pointing, lengthy repairs, and costly litigation. The EDA Envelope Warranty looks to avoid these headaches, because we stand by the quality of our work. When our clients receive this warranty, they get peace of mind knowing that their building will remain watertight.



EDA ENVELOPE
WARRANTY

awards.


EDA Contractors specializes in the exterior building envelope, aiming to provide a watertight building for every customer. We achieve this mission by integrating design knowledge, continuous training, and accountability in everything we do. We are committed to providing services that represent the pride we have in who we are and what we provide. [Check out some of our projects that have received awards. edacontractors.com/projects](https://edacontractors.com/projects)



GBCA Best Educational Project 2022

Northeast Community
Propel Academy

Philadelphia, PA



General Contractor	Architect	Manufacturers	Products
Gilbane Building Company	Stantec	Fizzano, Astra-Glaze, Reynobond, Henry AVB, Siplast Roofing Systems	Glazed Block, Standard Block, Brick Veneer, ACM Panels, AVB, SBS Modified Roofing

EDA Services:
Roofing & Sheetmetal, Siding & Wall Panels, Masonry, Air & Vapor Barriers



AIA New York State Design Award 2023
GBCA Construction Excellence Award 2021



University Meeting and Guest House

Philadelphia, PA



General Contractor	Architect	Manufacturers	Products
Target Building Construction	TenBerke (Formerly known as Deborah Berke Partners)	Shildan, Reynobond, VMZINC, Henry	AVB, Terra Cotta Wall Panels & Baguettes, ACM Panels, Zinc Flat Seam Panels

EDA Services:

Roofing & Sheetmetal, Siding & Wall Panels, Air & Vapor Barriers, Historic Restoration



Law Enforcement Health Benefits

Philadelphia, PA



GBCA Construction Excellence Award 2021



General Contractor	Manufacturers	Products
P. Agnes Inc.	Carlisle Roofing Systems, Crystalline Waterproofing – Xypex, Greenleaf Brick, Glen Gery Brick, Fizzano Bros. Concrete Products, TAKTL, Alucobond, Carlisle AVB	CTPO Membrane Face Brick and CMU, TAKTL UHPC Panels, Alucobond PLUS 4mm Fire-Resistant ACM, Carlisle CCW 705 FR Sheet and Applied AVB, TPO Roofing

EDA Services:
Roofing & Sheetmetal, Waterproofing, Masonry



GBCA Construction Excellence Award 2021



Live! Casino & Hotel Philadelphia

Philadelphia, PA



General Contractor	Architect	Manufacturers
Gilbane Building Company	BLTa	Centria, Alucobond, Construction Specialties, Henry, Klofer, Levolux, AMI (American Metalcraft), Armstrong, Edon
Products		
Alucobond ACM Panels, Centria Single Skin Panels, Henry VP 160 & Accessories (AVB), Fiberglass Reinforced Plastic Panels, Construction Specialties Louvers, Emseal Expansion Joint, Clark Dietrich Exterior Wall Panels		

EDA Services:

Siding & Wall Panels, Masonry, Air & Vapor Barriers



Princeton CUB

Newark, NJ



General Contractor	Architect	Manufacturers
P. Agnes, Inc.	ZGF Architects	Revere Copper Coil, NBK Terra Cotta, Morin Wall Panels, Construction Specialties (C/S) Louvers, Henry Air & Vapor Barrier, Fizzano Brothers
Products		
Freedom Gray Coils, Rosin Paper, High-Temperature Vapor-permeable Barrier, Insulated Panels, Terra Cotta Wall Tiles with Green Girt Subframing and Roxul Mineral Wool Insulation, NBK Terra Cotta Baguette Louver Blade, Morin Single Skin Flush Wall Panels, Morin Standing Seam Tank Wall Panels, Construction Specialties (C/S) Louvers, Henry Fluid and Sheet Applied Air and Vapor Barrier, Fizzano Brothers Normal Weight CMU		

EDA Services:
Roofing & Sheetmetal, Waterproofing, Siding & Wall Panels, Masonry, Air & Vapor Barriers

GBCA 2024 Best Industrial or Energy Project
GBCA 2024 Best Mechanical Construction Project



GBCA 2024 Best Historic Preservation Project



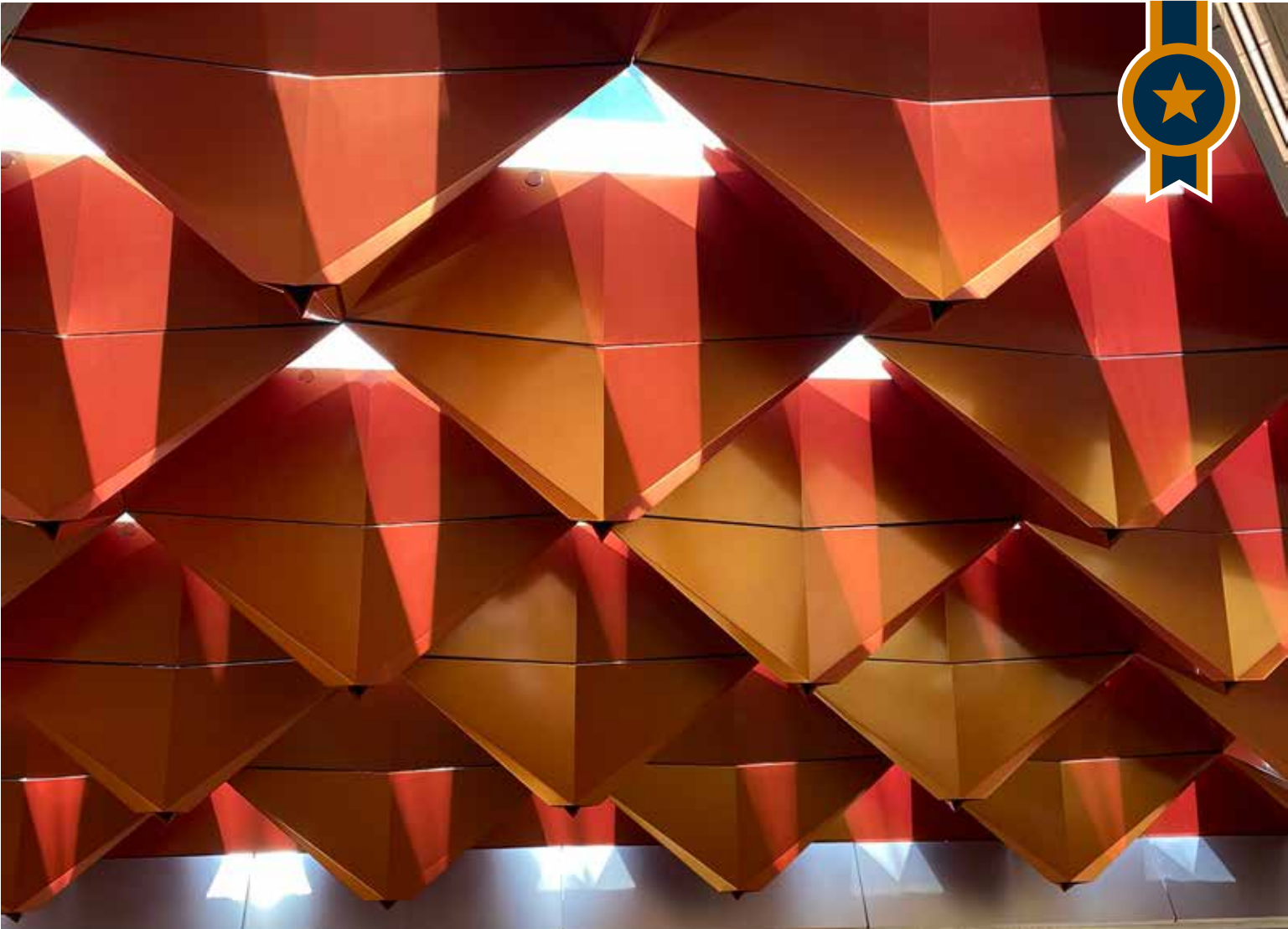
NJ Statehouse

Trenton, NJ

General Contractor	Architect	Manufacturers
Daniel J. Keating Company	NELSON World-wide, Preservation Design Partnership	Xypex, Siplast, Hanover, Supersky, Copper Craft, Bilco, Ruskin
Products		
SBS IRMA Roofing, SBS Roofing, Evergreen Slate Shingles, Copper Standing Seam Roofing, Copper Louvers, Copper Gutter, Roof Hatches, Louvered PHs, Monumental Skylights, Monumental Laylights, Balustrade, Metal Cornice, Cresting, Hip Rolls, Frieze Panels		



NYC Annual Awards for Excellence in Design 2013



Far Rockaway Library

Far Rockaway, NY

General Contractor	Architect	Manufacturers	Products
EW Howell	Snøhetta	Alpolic, ATAS	ACM Panels, Single Skin Panels

ENR New York Best Projects - Merit Award 2023

2023 United Nations Educational, Scientific and Cultural Organization (UNESCO) Prix Versailles Special Prize for an airport exterior

2024 Skytrax World's Best New Airport Terminal



Newark Liberty International Airport

Princeton, NJ

General Contractor

Architect

Manufacturers

Tutor Perini/Parsons,
JV

STV Incorporated

CENTRIA, Vitrabond, Sobotec, GreenGirt,
Rockwool, Vaproshield, Construction
Specialties, Alpine, 3M

Products

Concept Series CS-660 Panels, Concept Series CS-623 Panels, Concept Series CS-200 Panels, IW-15A Soffit Panels, MR3-36 Panels, Perforated BR5-36 Screen Wall Panels, 4mm ACM Panels (FR), Aluminum Plate SL2000P Rain Screen System, Louvers - Model DCH-5704, Simple Z, Cavityrock Insulation, Reveal Shield IT Black Scrim, Snow Guards PP145 Pipe Style, 3015 Air & Vapor Barrier



Lewis C. Cassidy Academics Plus School

Langhorne, PA

General Contractor	Architect	Manufacturers
Perryman Shoemaker	Ewing Cole	Fizzano Bros, Fraco, Spec Mix, General Insulation, Henry, Penn Stainless, Belden Brick, Dow, Techo Bloc
Products		
CMU (various), 8" Ladder wire , PLN SM750 Silverstone mortar, PLN SM800 Black Mortar , Brick (English Grey velour & Sherwood Grey Velour), Dupont Styrofoam, Henry Blueskin LVC adhesive, Henry 925 BES sealant, Henry Blueskin Wp200, Henry 789 FIB ASPH EMUL DMP		



Grand Prize for New Construction in the 2025
Spaces4Learning Design Showcase



Multi-Housing News Excellence Award 2022



Arthaus Condominiums

Philadelphia, PA

General Contractor	Architect	Manufacturers
Intech	KPF	Alucobond, Centria, Vratza, Fizzano, GCP Applied Technologies, WR Grace, American Hydrotech, Hanover Architectural Products, Carlisle Syntec Roof Systems, Kemper Systems, Siplast Roof Systems
Products		
CMU, Vratza Limestone, Granite Veneer, Limestone Veneer, ACM Panels, Centria Econolap Corrugated Panels, PrePrufe 160 R Plus Waterproofing, Bituthene 3000 Below Grade Waterproofing, 6125 Monolithic Membrane Above Grade Waterproofing, Tudor Finish Prest Pavers & Pedestals, Sure Weld TPO Roofing, Kemperol 2K PUR Tank Waterproofing, Terapro VTS Parking Garage Floor Coating		



LaGuardia Airport

Queens, NY

General Contractor	Architect	Manufacturers
Skanska / Walsh Construction JV	HOK / Parsons Brinckerhoff JV	Sobotec, Construction Specialties, Centria
Products		
Sobotec SLP 2000 and SLP 5000 Plate Panel Systems, Construction Specialties Louvers and Expansion Joints, Custom Extruded Aluminum Soffit Panel System, Centria Insulated Plenum Panels and Concept Series Wall Panel Systems		

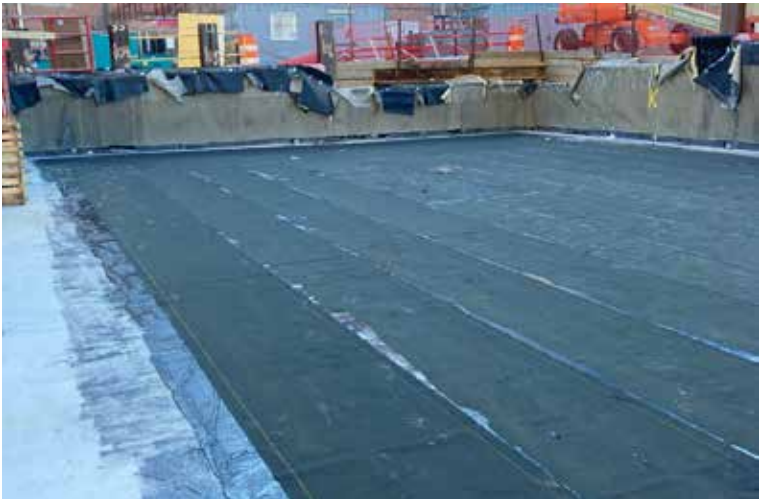




Wexford One uCity

Philadelphia, PA

General Contractor	Architect	Manufacturers	Products
The McKissack Group	Zimmer Gunsul Frasca Archi- tects, LLP (ZGF)	Soprema, Barret, Columbia Green	Sentinel Mem- brane, Ram Tough 250, Wes Tile Concrete Pavers, Green Roof Trays, PVC, Hot Melt



| Saint Barnabas Medical Center

Livingston, NJ

General Contractor	Architect	Manufacturers
WM. Blanchard	Francis Cauffman	Reynobond, Metal Tech, CENTRIA, Construction Specialties
Products		
EDA Fabricated ACM Panels, Expanded Metal Screen Wall, Misc. Siding, Louvers		





successful together.



info@edacontractors.com | edacontractors.com | 215.638.3500