

ZEDEX

Sustainability Framework

Respect for People & Place.

Zedex Gold Limited

The Zedex responsible operations framework sets out the company's approach to exploration and development.

CONTENTS

Sustainability Framework

Our Approach: Respect for People and Place	3
Sustainable Development Goals.....	4
Community	5
Regulatory Oversight in New Zealand	6
Water Management	7
Emissions Reduction Plans	8
Health and Safety	9
Archaeology and Heritage	10
Land and Environment	10
Rehabilitation and Closure	11
Technical Studies and Environmental Assessments.....	11
Earthworks.....	12
Backfilling and Regrassing	12

Our Approach

Respect for People and Place.

The Zedex responsible operations framework sets out the company's approach to exploration and development.

Our ambition is to focus on long-term progress and prosperity, protecting communities and the environment while meeting New Zealand's rigorous regulatory standards. This framework applies across all project activities, from early-stage exploration through to rehabilitation and closure.



Native fern fronds — Zedex operates within Aotearoa's distinctive ecology.

Integrity is fundamental to the way we do business, and our operations are guided by four core pillars:

<h3>Community</h3> <p>Engaging openly and honestly with the communities and iwi in which we operate</p>	<h3>Health and Safety</h3> <p>Maintaining the highest standards of worker and site safety</p>
<h3>Environment</h3> <p>Protecting land, water, biodiversity, and heritage through responsible practice</p>	<h3>Long-term Prosperity</h3> <p>Creating value for our shareholders and our communities</p>

Sustainable Development Goals

Aligning with internationally recognised Sustainable Development Goals (SDGs), including responsible resource use, clean water protection, and climate management.

Sustainable Development Goal 5 (SDG 5): Gender Equality

SDG 5 aims to achieve gender equality. Zedex aims to maintain equality through our hiring practices, ensuring all candidates are assessed on merit.

Sustainable Development Goal 6 (SDG 6)

Ensure availability and sustainable management of water and sanitation for all. Zedex ensures that all water use and management regulations are followed closely.

Sustainable Development Goal 8 (SDG 8) Decent Work and Economic Growth

SDG 8 focuses on promoting sustained, inclusive, and sustainable economic growth, full and productive employment, and decent work for all. Zedex supports safe and fair working conditions for the team and contractors.

Sustainable Development Goal 9 (SDG 9) Industry, Innovation and Infrastructure

SDG 9 focuses on building resilient infrastructure, promoting sustainable industrialisation, and fostering innovation. Zedex is committed to ongoing innovation.

Sustainable Development Goal 12 (SDG 12) Responsible Consumption and Production

SDG 12 focuses on ensuring sustainable resource use, reducing waste, and minimising environmental impact across production and consumption systems. Zedex strives for efficient resource use and minimal impact.

Community



Local teams on site — relationships built on trust.

Local Knowledge and People

Zedex employs an experienced mining team of New Zealanders who live locally, bringing genuine understanding of the surrounding environment, culture, and community to each project. This local presence ensures that relationships with all stakeholders are built on trust.

Iwi and Local Communities

Zedex recognises the importance of meaningful engagement with iwi and hapū. Engagement is undertaken early in the project process and maintained throughout, respecting the cultural significance of the land and waterways in which we work.

Informed Communities

Keeping communities informed is a priority throughout every stage of exploration and project activity. Zedex uses face-to-face meetings, regular project updates, and written correspondence to support transparency and ensure that all stakeholders remain informed as projects progress.

Regulatory Oversight in New Zealand

New Zealand's mining regulatory environment is among the most rigorous in the world. Zedex operates in full compliance with all applicable legislation and works collaboratively with regulators at every level of government to meet — and where possible exceed — required standards.

Working with Councils and Regulators

Zedex works closely with regional and district councils as part of the consenting and approvals process, meeting all local planning requirements. An experienced environmental and regulatory team supports each project through technical studies, environmental assessments, and ongoing compliance monitoring. The team includes specialist expertise in environmental permitting and stakeholder engagement, providing robust oversight from initial exploration through to any future development phase.

Water Management

Zedex recognises the importance of responsible water management. We understand that iwi and local communities value water for a number of reasons, including cultural, ecological, economic, and recreational values, and we work to manage our water-related activities. We will use reasonable endeavours to manage our water-related activities in a way that avoids unnecessarily compromising water quality and use.

We achieve this by complying with relevant standards and consent conditions, with a strong emphasis on risk management, operational controls, and continuous improvement. The company takes an integrated, compliance-focused approach to protect local water quality and maintain community and regulatory confidence.

Water Quality

Protecting local water quality is fundamental to every Zedex project. Comprehensive hydrological studies will be undertaken where necessary to inform water management and environmental protection measures.

Emissions Reduction Plans

As we strive to minimise emissions, our team has transitioned to electric vehicles where practicable.

We will continue to investigate and, where feasible, implement commercially viable low-emission technologies that support the decarbonisation of our activities

Health and Safety



Site overview — safety is foundational to every project.

Regulatory Framework

Zedex adheres to the requirements of the Health and Safety at Work Act 2015 and the Health and Safety at Work (Mining Operations and Quarrying Operations) Regulations 2016. All relevant personnel hold current Certificates of Competency as required under the 2023 regulatory updates, and Zedex maintains a structured programme of training, induction, and ongoing competency assessment.

We proactively identify, assess, and manage risks that could impact safety, health, and the environment.

Training and Qualifications

Zedex supports ongoing training and qualification for all team members relevant to their roles.

Archaeology and Heritage

Zedex will avoid listed archaeological and heritage sites and maintains an Accidental Discovery Protocol outlining the procedures to be followed in the event that kōiwi or artefacts are discovered.

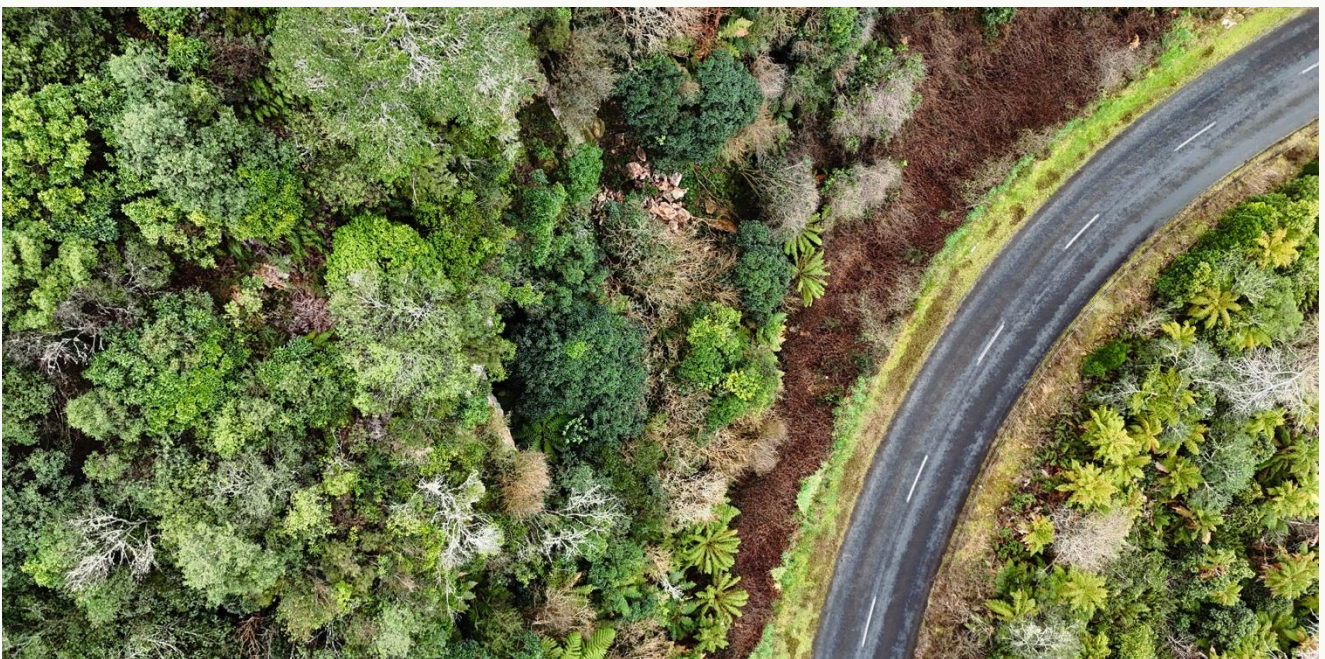
Land and Environment

Department of Conservation Land

Zedex recognises the importance of nearby Department of Conservation land and the surrounding natural environment. Where possible, Zedex will avoid vegetation clearance and surface disturbance on public conservation land.

Air Quality

We employ a range of methods to control air emissions and manage dust. For example, we ensure that machinery is properly maintained, use dust suppression where necessary, and revegetate areas that are no longer in use.



Working in and around sensitive landscapes.

Rehabilitation and Closure



Rehabilitation returns disturbed land to productive use.

Responsible environmental practice is a core principle for the Zedex team. Underground voids will be backfilled where necessary to ensure safety and surface stability. Disturbed areas will be rehabilitated to a standard that is at least equivalent to their former use.

Rehabilitation plans will be developed for each project site in advance of activity commencing.

Technical Studies and Environmental Assessments

Technical studies and regulatory assessments are fundamental to project planning and the approvals process. Studies are undertaken by qualified specialists and inform both design and consenting for each project.

Earthworks

In addition to complying with applicable rules and conditions, Zedex will actively seek to minimise disturbance by utilising existing tracks and accessways where possible and otherwise limiting areas of disturbance to practicable minimums.

Topsoil will be stockpiled for reuse during rehabilitation, and measures will be implemented to minimise erosion and control sediment. These include upstream cutoff drains to divert water around disturbed areas, bunds and sumps to capture and reuse water, and silt fences.

Backfilling and Regrassing

Backfilling and regrassing form part of the standard Zedex rehabilitation approach following completion of all work, ensuring sites are returned to productive land use with minimal lasting impact.

Backfilling and regrassing form part of the standard Zedex rehabilitation approach following completion of all work, ensuring sites are returned to productive land use with minimal lasting impact.