

WELCOME

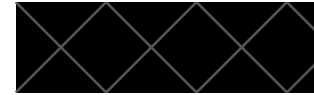
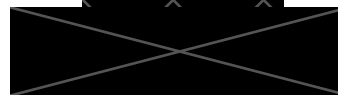
RIVERSIDE APARTMENTS NEW
COMMUNITY CENTER

1ST COMMUNITY MEETING

RESILIENCE & SUSTAINABILITY INITIATIVES

AGENDA

- Welcome & Introductions
- A Tale of Two Communities
- Intro to Resilience and Sustainability
- Community Center Update
- Breakout Sessions
 - A. Community Center Uses
 - B. Perceived Threats to Community & Concerns
 - C. Emergency Needs and Community Center's Possible Role
 - D. Programming Ideas
- Reconvene – Report Back and Discussion
- Wrap Up



A SHORT
STORY

A photograph of a cracked egg on a speckled countertop. The egg is cracked open, with the yolk and white visible. A knife is positioned above the egg, and another piece of eggshell is to the right. The image is partially obscured by a white, torn-edge graphic that separates it from the text on the right.

A TALE OF TWO COMMUNITIES

- Five Days in July 1995
- Heat Index 126
- Power went out all over city
- No water in high rises
- ½ Hospitals were at capacity
- Slow Motion Disaster
- 739 Deaths

Source 2002 book Heat Wave A Social Autopsy of Disaster in Chicago, Eric Klinenberg

A Comparison

North Lawndale

- Large BIPOC Community
- Low Income
- Good Size Elderly Population
- Isolated
- High Crime
- Little Sense of Community

10X death rate in Heat Wave

South Lawndale

- Large BIPOC Community
- Low Income
- Good Size Elderly Population
- Crowded
- Lower Crime Rate
- Strong Sense of Community
- Common Places to Hang Out

RESILIENCE

&

SUSTAINABILITY

- **WHAT DOES “RESILIENCE” MEAN TO YOU?**
- **WHAT DOES “SUSTAINABILITY” MEAN TO YOU?**
- **WHY MIGHT THEY BE IMPORTANT ELEMENTS TO A COMMUNITY?**

WHICH TREE TYPE AND FORMATION IS MORE RESILIENT IN ROUGH WEATHER?



IS THIS SUSTAINABLE?

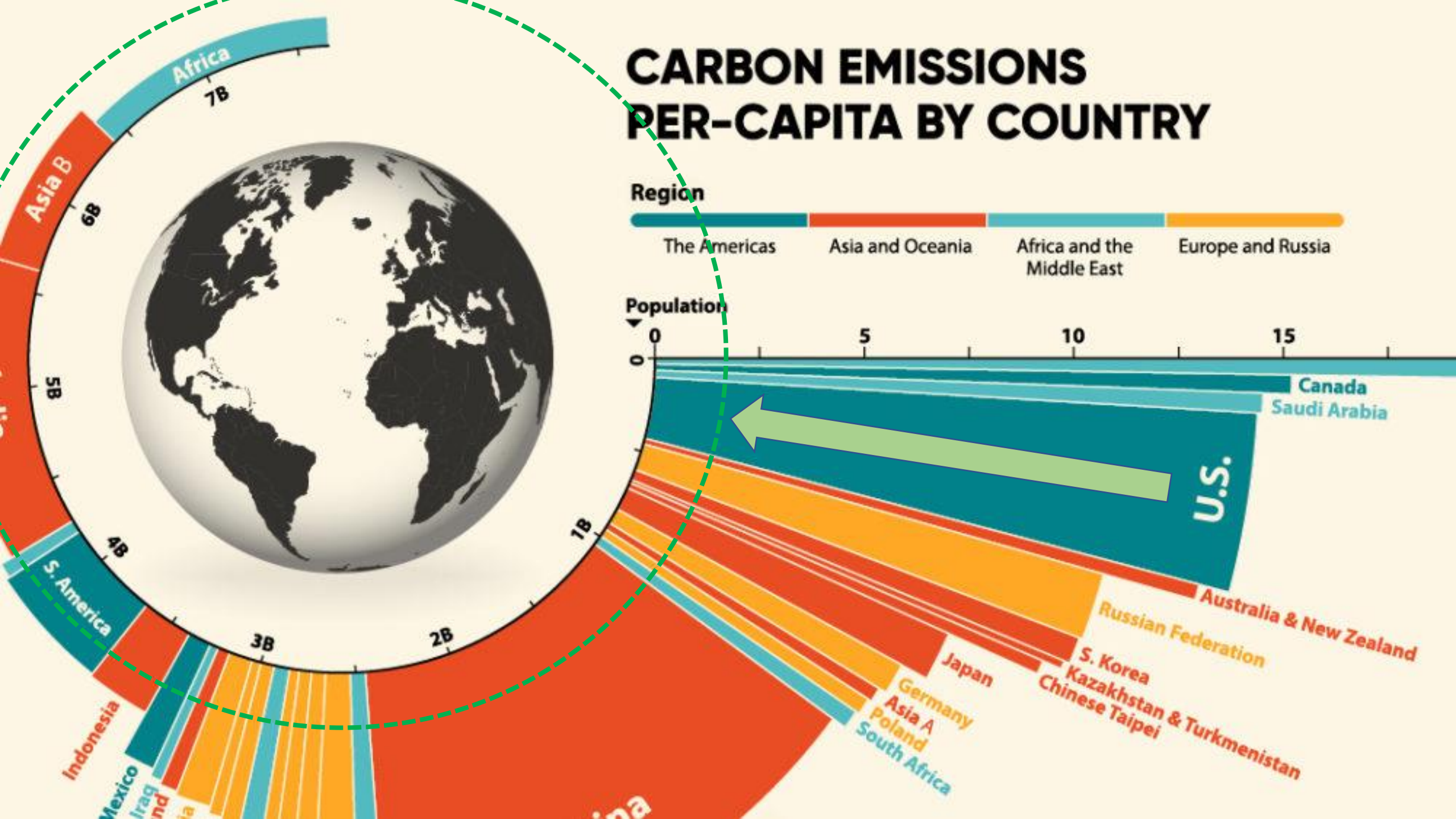


“UNSUSTAINABLE” BEST EXPLAINS SUSTAINABILITY



LIVING WITHIN OUR PLANET'S MEANS

CARBON EMISSIONS PER-CAPITA BY COUNTRY



CAN WE CONTINUE TO IMPROVE OVERALL QUALITY OF LIFE WHILE LIVING SUSTAINABLY?



...my answer comes in 5 slides

What are you thinking....

LIGHT IS JUST A
MATTER OF
FLIPPING A SWITCH

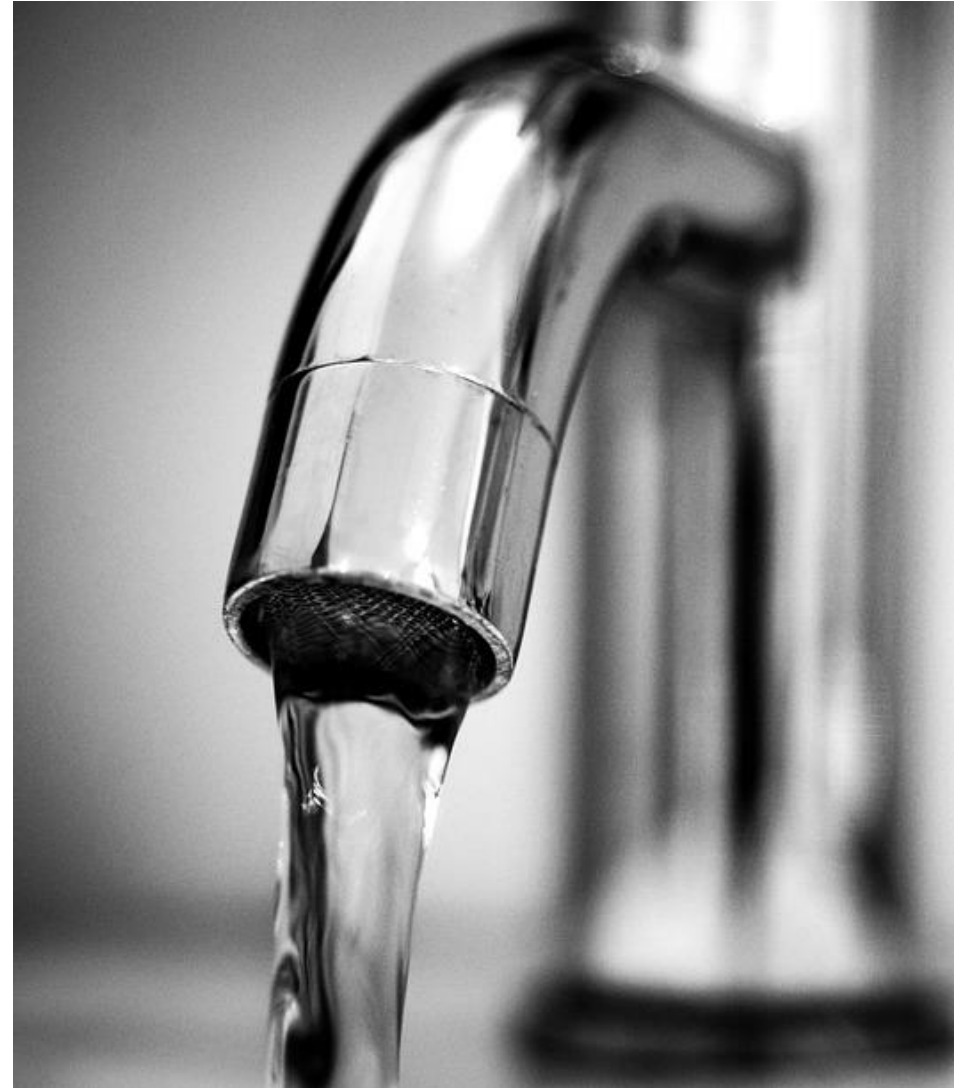
THERE IS A WHOLE
COMMUNITY THAT
MAKES THIS
POSSIBLE

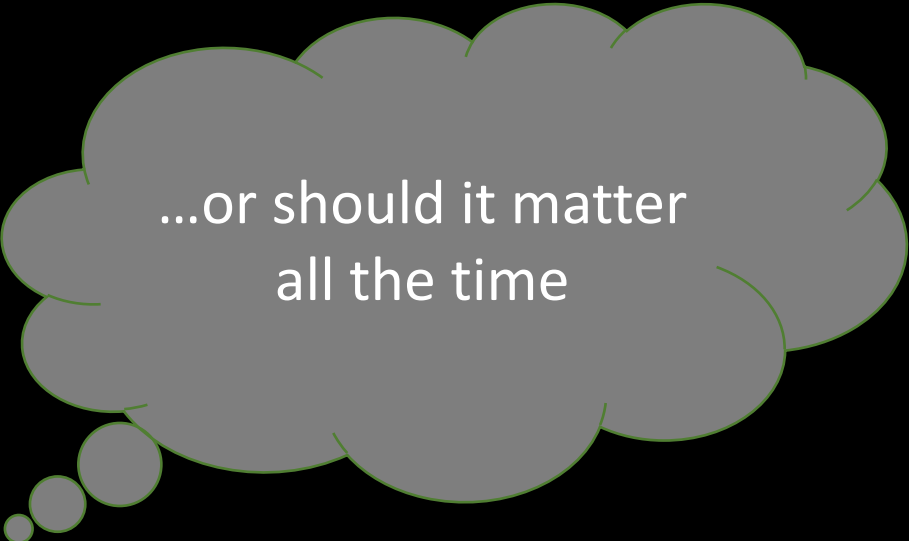


... when you turn on the lights.

Or when you...

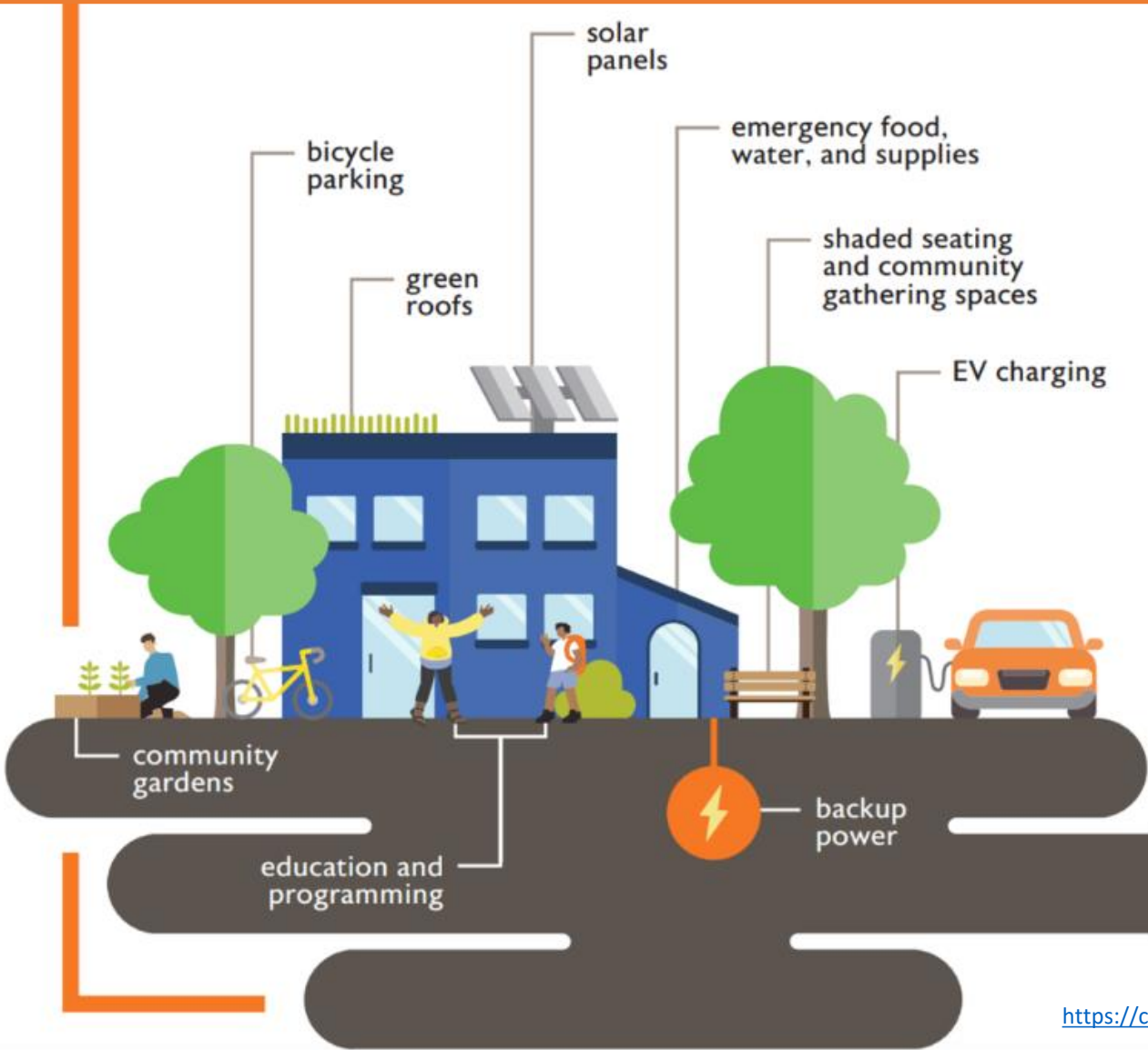
- Turn on the faucet
- Turn up the thermostat
- Open the fridge
- Flush the toilet
- etc.





...or should it matter
all the time

WHAT MIGHT YOU FIND AT IN A RESILIENCE HUB?



**MOST IMPORTANTLY YOU
SHOULD FIND...**

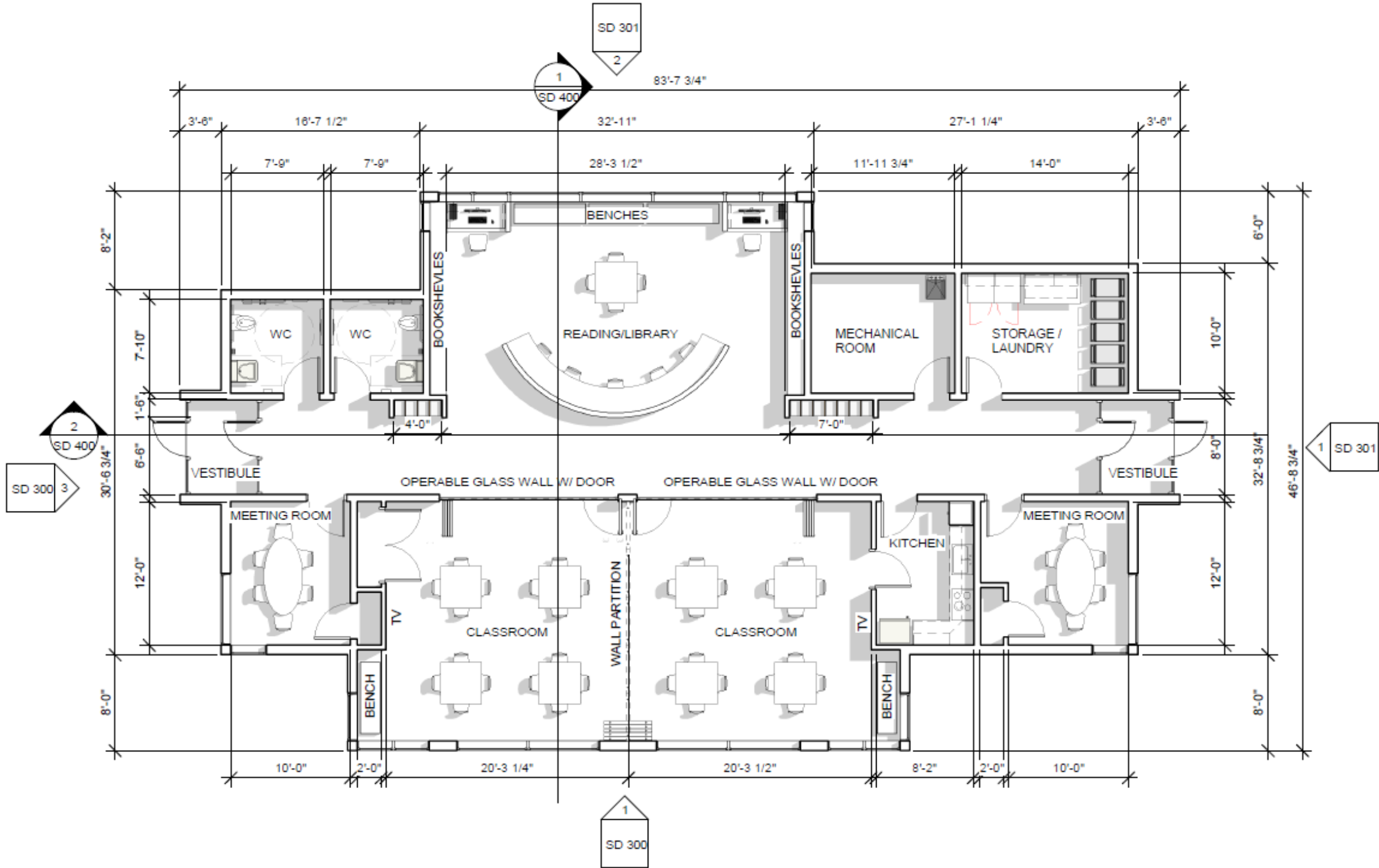
The Four Senses Needed to Navigate Climate Change

- Sense of **C**ommunity
- Sense of **O**ppportunity
- Sense of **U**Rgency
- Sense of **A**gency



COMMUNITY
CENTER
UPDATE





BREAK OUT SESSION

BREAK INTO FOUR GROUPS...

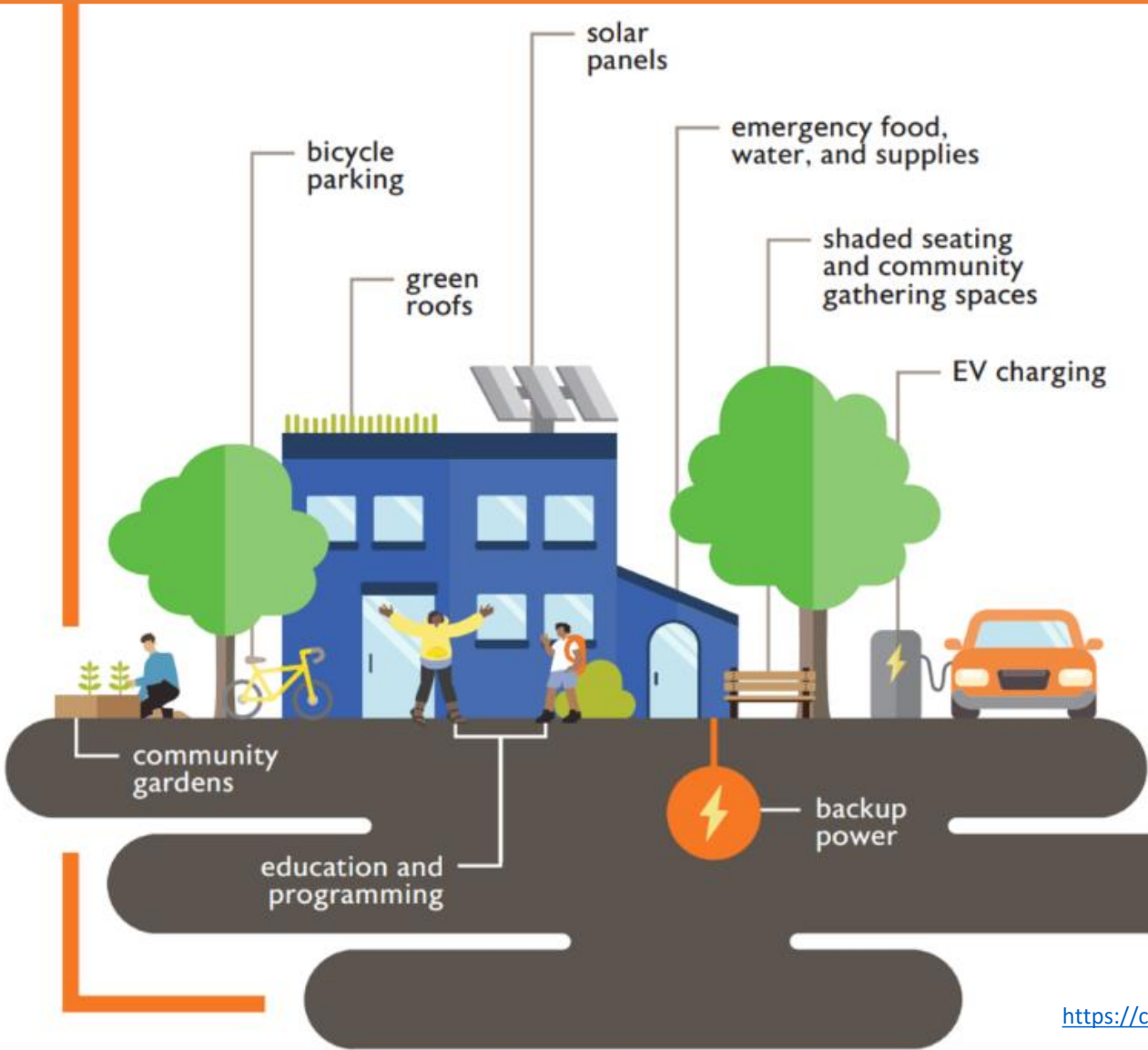
A. Community Center Uses

B. Perceived Threats to Community &
Concerns

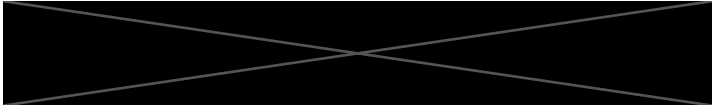
C. Emergency Needs and Community
Center's Possible Role

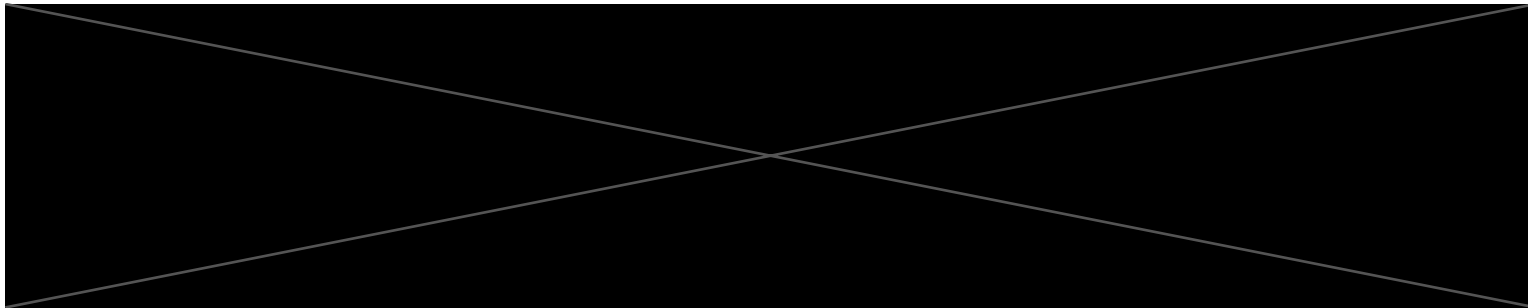
D. Programming Ideas

WHAT MIGHT YOU FIND AT IN A RESILIENCE HUB?



THAT'S A WRAP

- ✓ Please fill out the survey and drop it off as you leave.
- ✓ If you want to get more engaged in this process – please contact 



Thank you!