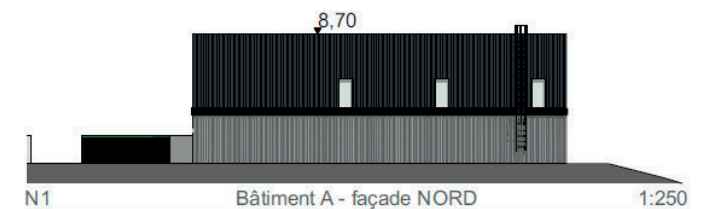
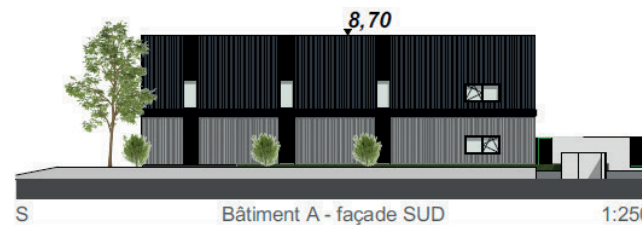
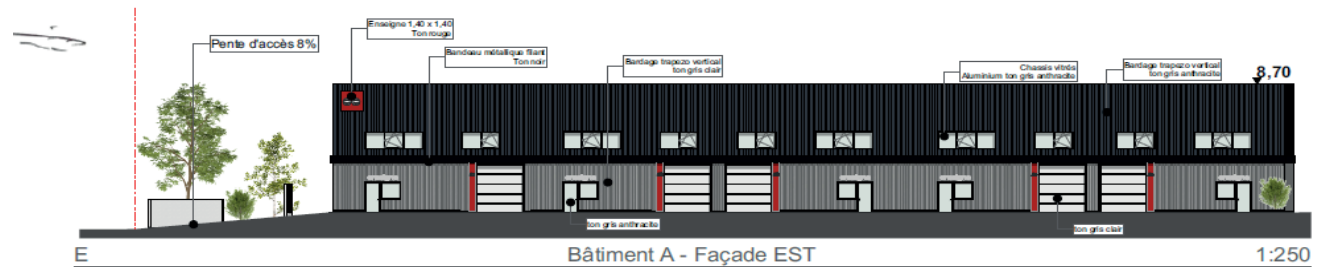
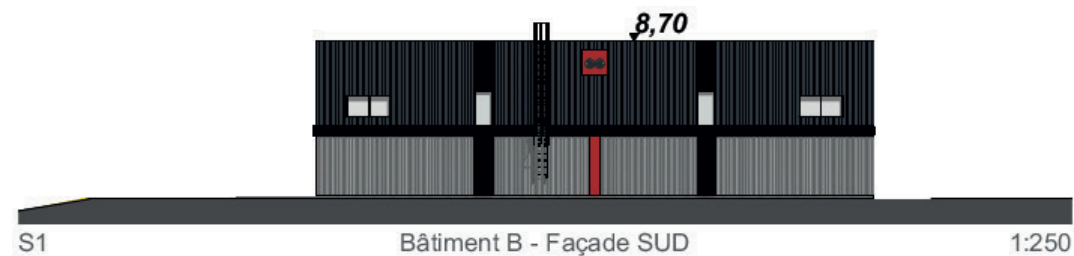
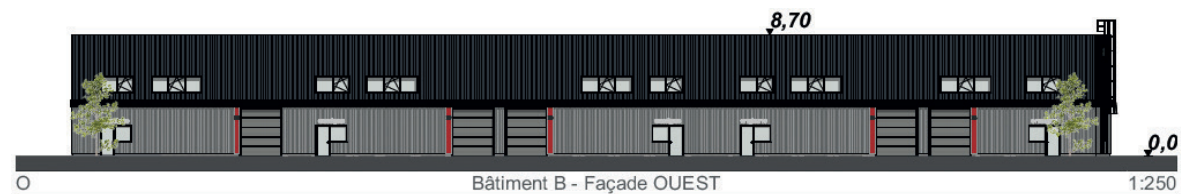
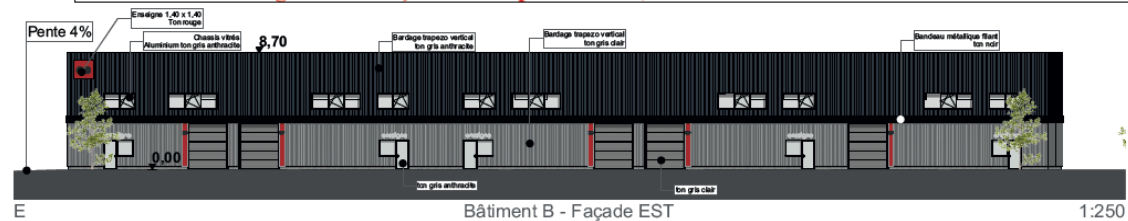


Modification intégrale des façades - Emprise au sol, dimensions et hauteur des bâtiments non modifié

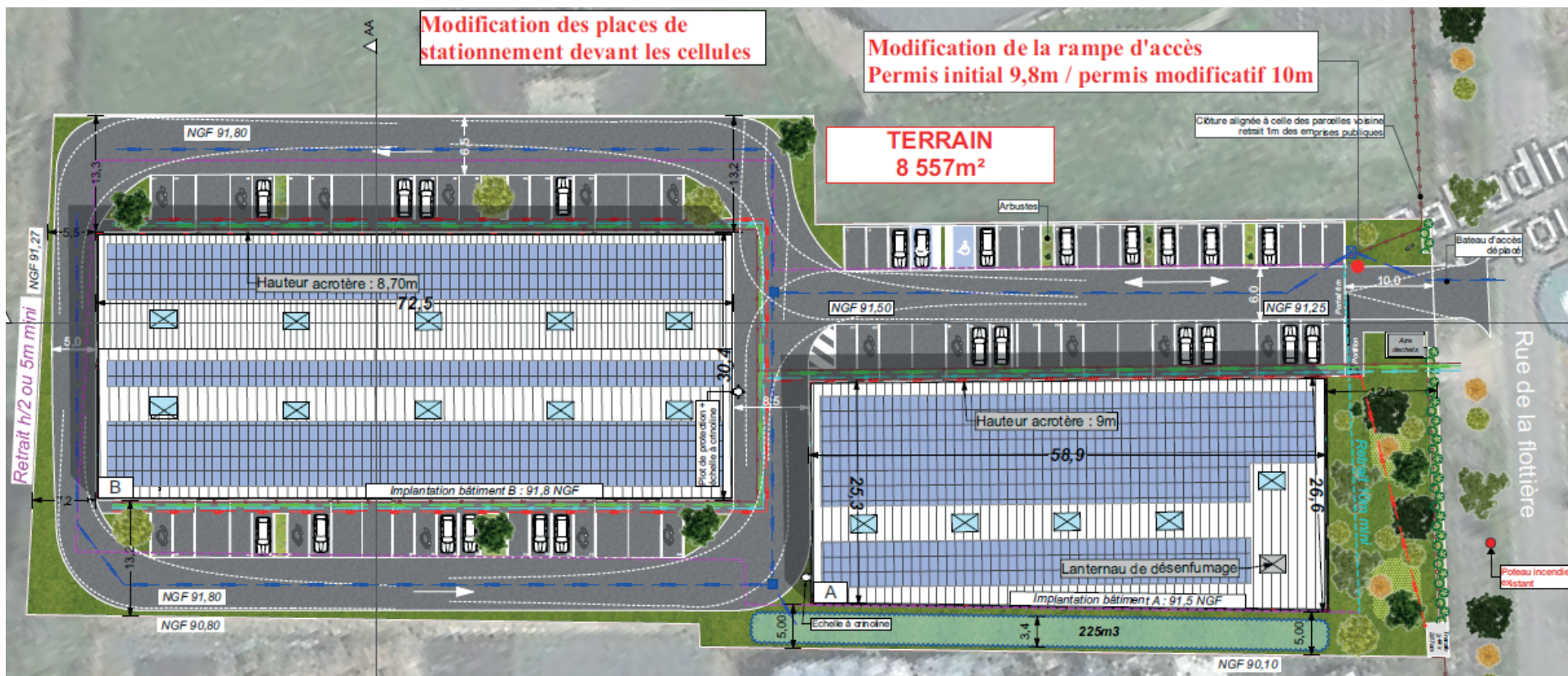


Façades - Bâtiment B

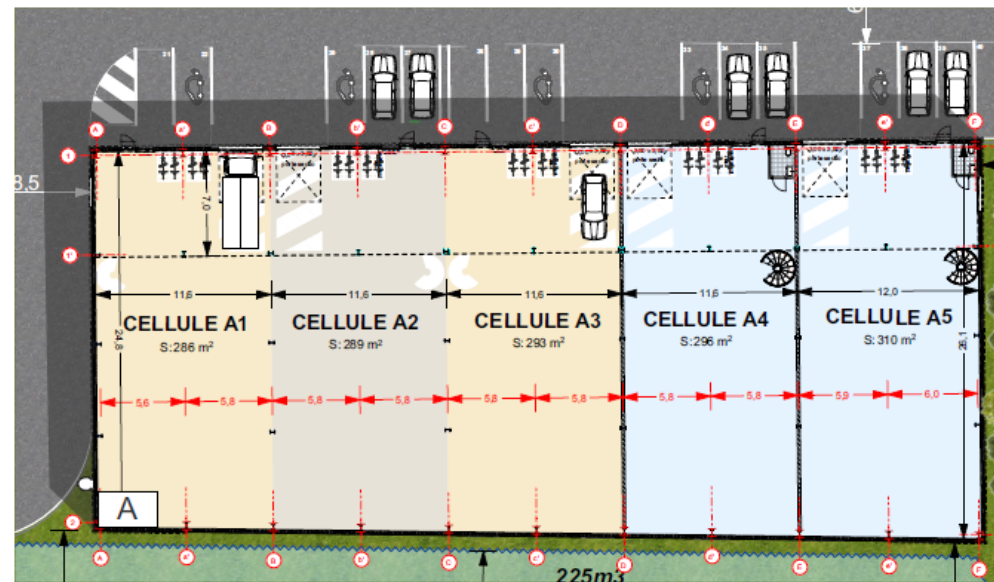
Modification intégrale des façades - Emprise au sol, dimensions et hauteur des bâtiments non modifié



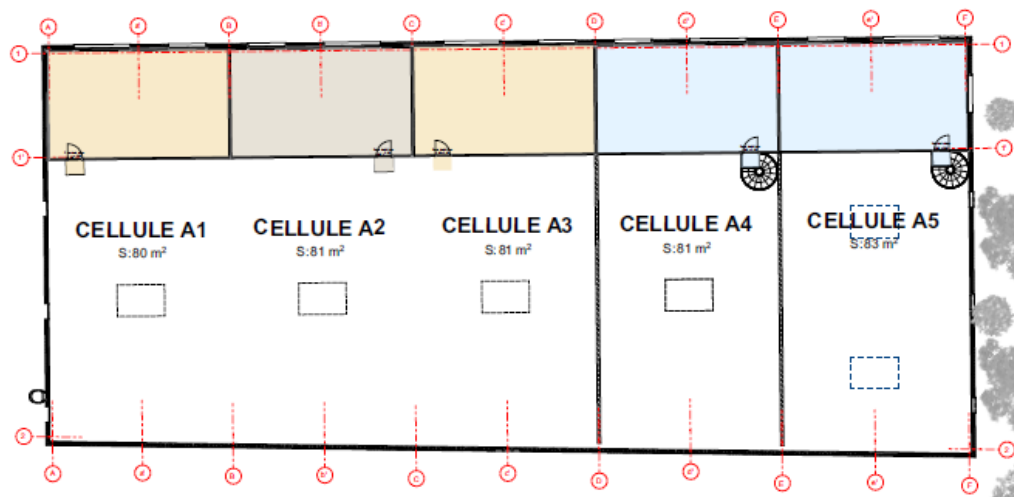
rd



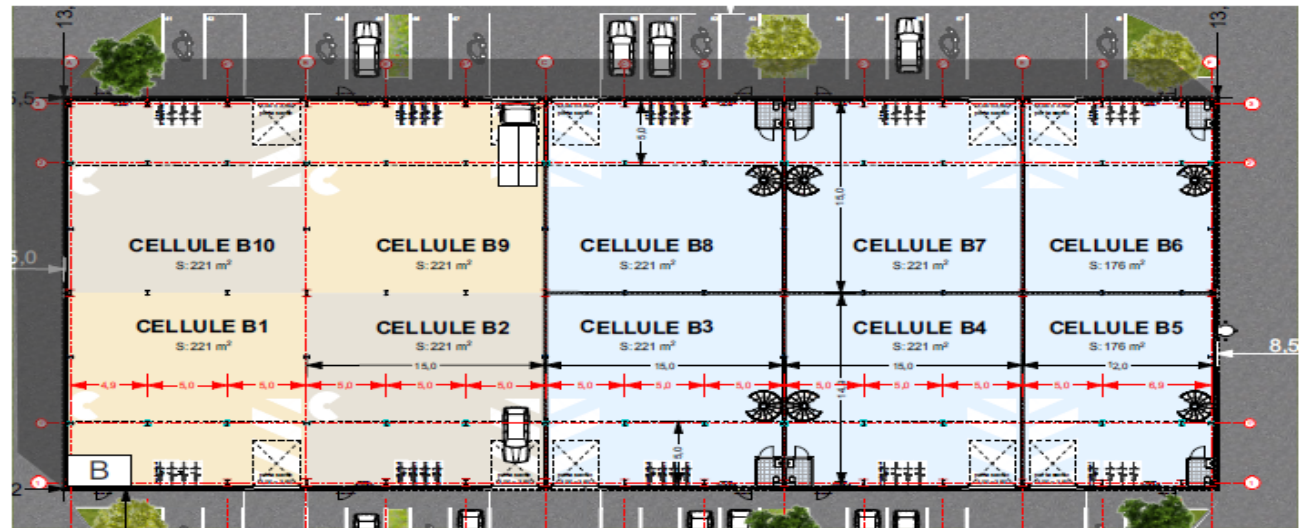
REZ-DE-CHAUSSÉE



R+1



REZ-DE-CHAUSSÉE



R+1

