

CaseStudy

John Sisk & Sons: Excelling in Safety and Efficiency
at the Historic Glass Bottle Site

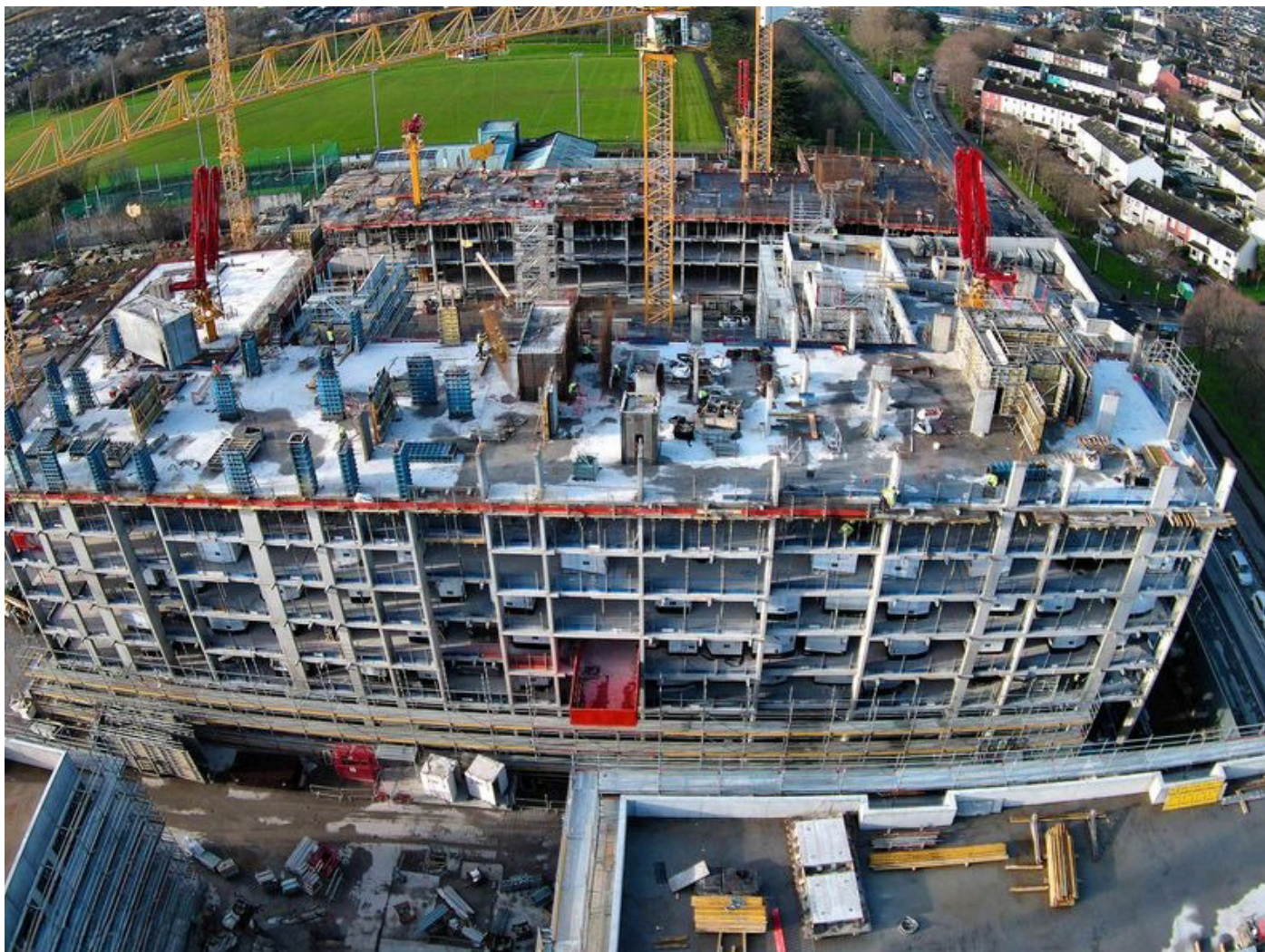


Introduction

The Glass Bottle site, located in Dublin, Ireland, represents one of the city's most ambitious residential redevelopment projects. Situated on a historic industrial site that once housed the Irish Glass Bottle factory, this 15-hectare redevelopment will transform the area into a vibrant urban quarter. The factory, which operated for decades as a cornerstone of Dublin's industrial economy, closed nearly 20 years ago. Its closure marked the end of an era, but the redevelopment aims to honor this history while breathing new life into the site.

The project will include 3,800 new homes for up to 9,500 residents, commercial spaces, and public amenities, making it a transformative effort in urban regeneration. With its immense scale and complexity, the project posed significant challenges for safety, logistics, and communication — making Evercam a key partner for General Contractor John Sisk & Sons.





The Challenge

Managing the Glass Bottle project required overcoming substantial safety and logistical challenges. With 8 tower cranes, over 60 contractors, and a daily average of 610 workers on-site spread across 15 hectares, maintaining safety, ensuring smooth coordination, and delivering progress on schedule were critical. The sheer scale of the project demanded innovative solutions. Chris O'Reilly, Sisk's Health and Safety Manager, identified the following complexities:

- Continuous, verified upholding of safety best practices among the 600+ workers to sustain accident-free hours
- Real-time site visibility to monitor activities, ensure compliance, and minimize material waste
- Effective, clear communication during daily site meetings and bi-weekly stakeholder progress reports



The Solution

Sisk established proactive safety protocols to manage and strengthen overall site safety, as well as the safety of the surrounding community. Utilizing Evercam helped prevent incidents and improve workflows, particularly in the areas of Safety Management, Daily Communication, and Progress Reporting.



Checking wind speeds and weather conditions daily helps us plan crane operations and prevent accidents.

Chris O'Reilly
Sisk's Health and Safety Manager



Proactive Safety Management



Weather Monitoring for Cranes

Evercam's weather tool allowed the team to monitor wind speeds and conditions, ensuring safe crane operations and reducing potential hazards. In O'Reilly's words, ***"Checking wind speeds and weather conditions daily helps us plan crane operations and prevent accidents."***

Visual Management of Exclusion Zone

Live camera feeds enabled the team to monitor pedestrian pathways and exclusion zones, ensuring safe logistics and avoiding on-site conflicts. ***"We use the cameras to visualize and adjust site logistics in real time, keeping operations smooth and safe,"*** O'Reilly shared.



Incident Review and Workflow Refinement

Recorded footage provided critical evidence for investigating incidents and identifying unsafe practices. Reviewing past recordings allowed the team to identify and rectify workflow breaches. O'Reilly noted, ***"When we review incidents, we're not just resolving issues—we're preventing them from happening again."***



Evercam isn't just a tool; it's become a core part of how we approach project management. It's impossible to imagine managing a site of this complexity without it.

Chris O'Reilly
Sisk's Health and Safety Manager



The time-lapse videos not only highlighted the progress we've made but also helped us secure buy-in for future phases of the project.

Chris O'Reilly
Sisk's Health and Safety Manager

Daily Communication

Live camera feeds enabled real-time visibility across the expansive site, facilitating effective daily site meetings. Subcontractors and supervisors aligned on exclusion zones, pedestrian pathways, and material logistics to ensure seamless operations. O'Reilly remarked, ***"Evercam's live view became an indispensable tool in coordinating daily activities. Having the live feed available for everyone to see ensures we're all on the same page."***

Daily Meetings as O'Reilly noted, ***"We gather in the coordination room, using live feeds to align subcontractors, supervisors, and staff. The visual clarity ensures everyone understands their role, streamlining workflows and reducing errors."***

Streamlined Progress Reporting

Showcasing Historical Transformation

The inclusion of historical site images alongside progress footage highlighted the journey from the factory's industrial past to its promising future. This storytelling element incorporated breathtaking images that resonated with stakeholders and the broader community.

Bi-weekly progress reports to stakeholders leveraged time-lapse footage and live camera views, reducing misunderstandings and delays. These visual tools showcased milestones and built confidence among clients and subcontractors alike. O'Reilly mentioned that ***"The time-lapse videos not only highlighted the progress we've made but also helped us secure buy-in for future phases of the project."***



Evercam's live view became an indispensable tool in coordinating daily activities. Having the live feed available for everyone to see ensures we're all on the same page.

Chris O'Reilly

Sisk's Health and Safety Manager



Community Impact

The Glass Bottle project has never been just about construction—it has been about creating a sustainable and inclusive neighborhood. From the outset of the project, Sisk has been committed to actively protecting and supporting the surrounding community. Their daily, courteous approach has led to long-term, healthy relationships among community stakeholders that will last for years to come.

Sisk's efforts extended beyond the site to include:

- Engaging with the local community through clean-ups, sponsorships, and charitable events.
- Supporting local employment initiatives by providing apprenticeships and training opportunities. ***"Our proximity to the community means we can make a real impact,"*** O'Reilly said. ***"From beach clean-ups to local sponsorships, we're not just building structures; we're building relationships."***



Our proximity to the community means we can make a real impact. From beach clean-ups to local sponsorships, we're not just building structures; we're building relationships.

Chris O'Reilly
Sisk's Health and Safety Manager



Key Results

Evercam's implementation at the Glass Bottle site delivered measurable and qualitative benefits:

- Reduction in manual reporting time due to Evercam platform features and compatibility with other construction software
- 1M Incident-free hours (and counting)
- Enhanced engagement among contractors and subcontractors

Looking Ahead

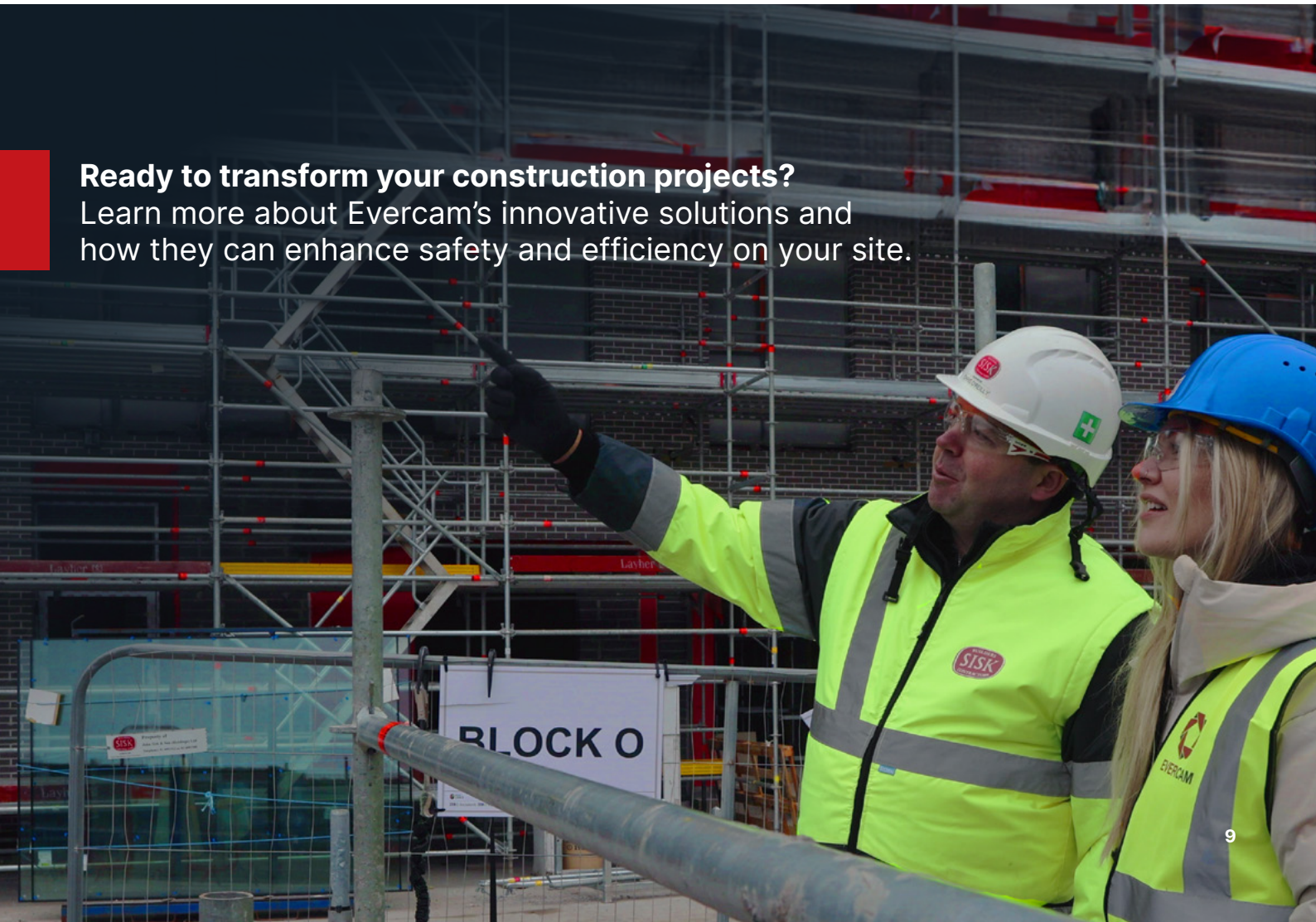
As the Glass Bottle project progresses, John Sisk & Sons continues to rely on Evercam to deliver transparency, efficiency, and safety. This partnership demonstrates how technology empowers construction leaders to manage complex environments effectively.

Chris O'Reilly concluded, ***"Evercam isn't just a tool; it's become a core part of how we approach project management. It's impossible to imagine managing a site of this complexity without it."***



Ready to transform your construction projects?

Learn more about Evercam's innovative solutions and how they can enhance safety and efficiency on your site.



**Ireland**

6-7 Granby Row, Dublin 1,
D01 FW20, Ireland.
+353 1919 4500

UK

344-354 Grays Inn Rd,
London WC1X 8BP
+44 800 047 2900

U.S.A

9639 Hillcroft St #2022
Houston, TX 77096
+1 979 315 1010

Singapore

10 Anson Rd,
#22-02 International Plaza
Singapore 079903
+65 9699 0677

Australia

G 651 Doncaster Rd.
Doncaster Vic 3108
+61 390 212 855

Follow us to learn more!

evercam.com

 [evercam](https://www.linkedin.com/company/evercam)

 [evercam_](https://www.instagram.com/evercam_)

 [evrcm](https://twitter.com/evrcm)

 [Evercam](https://www.youtube.com/evercam)