

CaseStudy

How ST Telemedia Global Data Centres (Philippines)
Uses Evercam for Increased Safety and Faster Project
Delivery



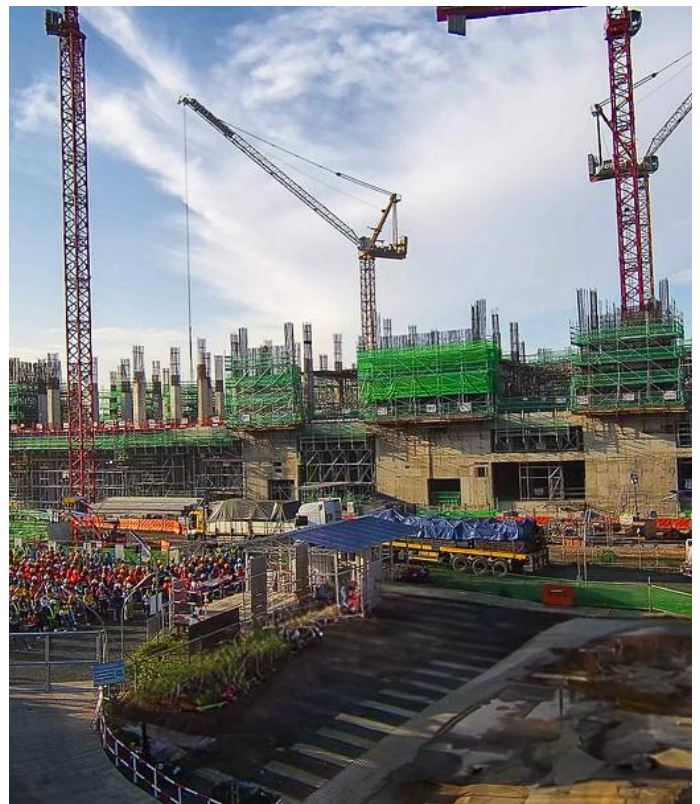
ST Telemedia Global Data Centres (Philippines) is a leading data centre provider operating out of Metro Manila, Philippines. With more than seven data centres established in the area, STT GDC Philippines delivers world-class infrastructure to hyperscalers, enterprises, and cloud service providers.



A Benchmark for Data Centres

In the highly specialized world of data centre construction, where precision, security, and sustainability converge, STT Fairview 1 stands as the Philippines' most ambitious project to date. This massive 83,000-square-meter campus in Quezon City represents a significant infrastructure investment in the region.

With 1,500 personnel working daily across the site and seven data centres already operating in the Philippines, STT GDC Philippines faced the challenge of maintaining consistent quality standards across an enormous operation. Evercam has emerged as their critical visibility tool, transforming how project owners monitor construction, communicate with stakeholders, and ensure adherence to their exacting standards.





For us, Evercam's biggest value lies in its ability to enhance project visibility and control. This translates into improved safety, reduced risk, and increased efficiency — leading to faster project delivery.

Aaron Nicklaus King
Project Manager, STT GDC Philippines

Project Overview

STT Fairview 1 isn't just another construction project—it's a technological ecosystem designed to support 124MW of capacity upon completion, with Phase 1 delivering 28MW by Q2 2025. Managed through a joint venture between First Balfour and Leighton Asia, this pioneering facility sets new standards for sustainable infrastructure in the region.

As with any project of this magnitude, STT Fairview 1 brings together multiple stakeholders, from local teams to Singapore-based investors, all requiring access to real-time information. The project's commitment to 100% renewable energy and LEED Gold certification places additional demands on documentation and verification processes.

"Sustainability forms the core value system at STT GDC Philippines," explains Aaron Nicklaus King, Project Manager at ST Telemedia Global Data Centres (Philippines). **"In this project, we've prioritized energy-efficient design, renewable energy sources, and comprehensive water conservation. Our design incorporates rainwater collection tanks and drainage systems that support our environmental goals while maintaining operational excellence."**

This sustainability focus represents more than corporate responsibility—it's built into the project's DNA. The Project Manager notes with pride, **"All STT Global Data Centres in the Philippines run on 100% renewable energy, and we're maintaining that commitment with STT Fairview 1. Our LEED Gold pre-certification stands as a testament to having sustainability ingrained from initial design through construction completion."**

Challenges: The Complexity of Data Centre Construction

Data centre construction presents unique challenges that extend beyond typical building projects. For STT Fairview 1, these challenges manifested in several key areas:

Maintaining Consistent Quality and Safety Standards

With operations spanning multiple sites, maintaining uniform standards becomes exponentially more difficult.

The technical complexity of the project demanded extraordinary measures. "We had to devise safe methodologies for lifting nine-ton chillers and 40-ton generator sets to the roof, positioned 40 meters above ground level," King recounts, describing the specialized equipment required. ***"You could see our two 300-ton cranes on site, poised to lift these massive components with absolute precision."***

As the first project of its kind in the Philippines, STT Fairview 1 required unprecedented collaboration with local authorities. ***"We worked closely with local agencies and utility providers to navigate the regulatory landscape properly,"*** the project manager explains. ***"This involved extensive coordination in design, planning, and knowledge sharing so that all agencies could effectively collaborate on this pioneering project."***





Engineering and Construction Complexities

The technical requirements of a data centre demand specialized construction techniques that balance structural integrity with operational flexibility.

"We incorporated hollow core slabs—precast systems that span six to twelve meters—to achieve the design clearances essential for a data centre," notes King. "These systems provide the ample headroom necessary for overhead services while giving us the flexibility to meet aggressive project timelines. Using precast systems accelerates how quickly we can complete slabs on a level-by-level basis."

The engineering approach embraced certain methodologies from inception. ***"From start to finish, we utilized Building Information Modeling for everything—from design clash detection to shop drawing generation and as-built documentation,"*** King emphasizes. ***"This significantly enhanced efficiency and precision throughout the design-build process."***

Visibility and Stakeholder Communication

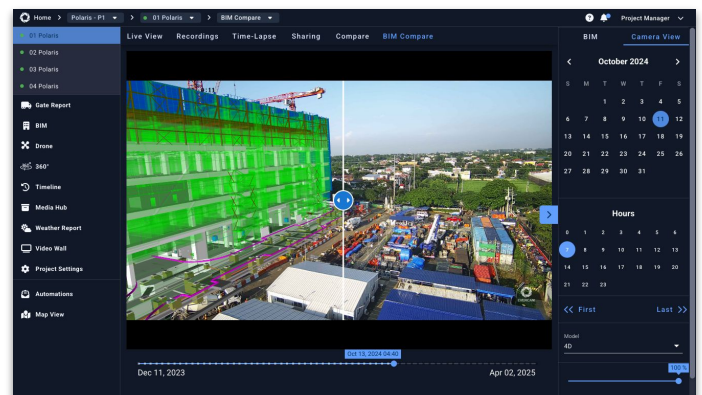
Perhaps the most persistent challenge involved maintaining clear communication channels between all stakeholders. With investors based in Singapore and locally, plus potential customers tracking construction progress, establishing a reliable information flow proved essential.



From start to finish, we utilized Building Information Modeling for everything—from design clash detection to shop drawing generation and as-built documentation. This significantly enhanced efficiency and precision throughout the design-build process.

Aaron Nicklaus King

Project Manager, STT GDC Philippines



Solutions: Leveraging Evercam for Sustainable Excellence

To address these multifaceted challenges, STT Fairview 1 implemented Evercam technology as their centralized visibility platform. The solution delivered critical capabilities in several key areas.

Comprehensive Site Monitoring

The ability to monitor site activities in real-time transformed operations. ***"Evercam has helped us see all our ongoing construction sites simultaneously and in real-time,"*** the project manager explains. ***"We can monitor major activities and track deliveries even during nighttime operations. This capability allows us to effectively track progress quickly and streamline reports to management and stakeholders."***

This 24/7 monitoring capability proved particularly valuable for a project operating at this scale. With the ability to oversee operations remotely, project leaders could maintain control while optimizing their time and resources.

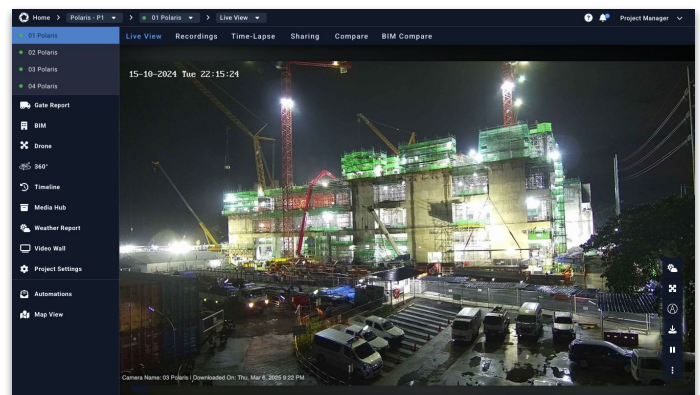
"We take safety very seriously here in our company, and of course, we want to ensure that all of our sites have the same quality and safety standards. Evercam has helped us by allowing us to see all our sites in real time, track major activities, monitor deliveries—even at night—and streamline reports to management and stakeholders." — Aaron Nicklaus King, Project Manager, STT GDC Philippines.



We take safety very seriously here in our company, and of course, we want to ensure that all of our sites have the same quality and safety standards. Evercam has helped us by allowing us to see all our sites in real time, track major activities, monitor deliveries—even at night—and streamline reports to management and stakeholders.

Aaron Nicklaus King

Project Manager, STT GDC Philippines.





“

It's actually the first time I've seen 4D BIM implemented in a usable way. I've been hearing about this capability for years, but Evercam provided a practical platform where you can see the 4D schedule and BIM being implemented effectively."

Aaron Nicklaus King

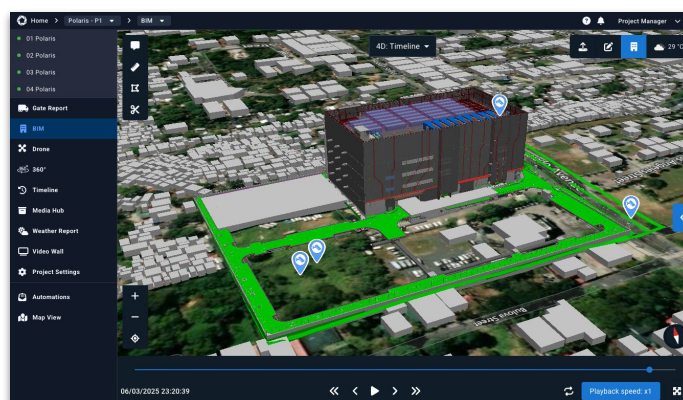
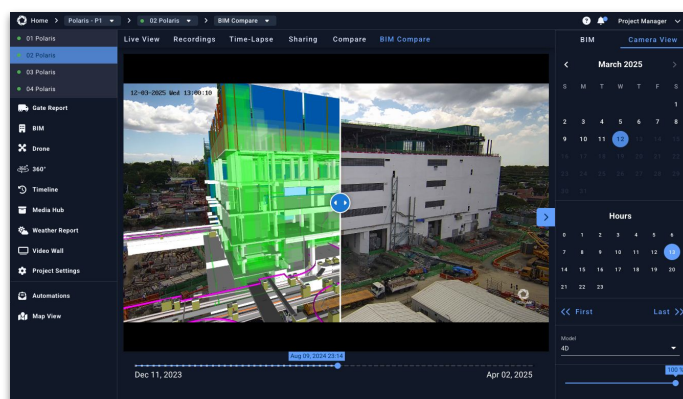
Project Manager, STT GDC Philippines

BIM Integration and 4D Visualization

One of the most revolutionary aspects of the implementation involved integrating Building Information Modeling with real-time visual data.

"The BIM Compare tool actually allows us to overlay the 3D model with the actual site progress," King notes with enthusiasm. "This helps us identify discrepancies immediately and ensure construction accuracy aligns with reporting. The schedule integration provides a dynamic visualization of the project timeline."

The project manager's excitement is palpable when discussing this feature: ***"It's actually the first time I've seen 4D BIM implemented in a usable way. I've been hearing about this capability for years, but Evercam provided a practical platform where you can see the 4D schedule and BIM being implemented effectively."***



Enhanced Safety Protocols

For a data centre project where safety requirements are extraordinarily stringent, Evercam delivered meaningful improvements to safety culture.

"At STT GDC Philippines, safety is paramount," emphasizes the project leader. "Evercam has become an essential tool for reinforcing our safety culture. It proactively identifies hazards and reinforces safety compliance by allowing us to review whether personnel are wearing the correct PPE."

The historical footage feature proved particularly valuable for continuous improvement.

"There were several instances where we used historical footage to identify lapses so we could improve our safety processes," King reflects. "After reviewing Evercam footage, we noticed key areas for improvement in crane assembly. The adjustments we made reduced the assembly time from seven days to three."



After reviewing Evercam footage, we noticed key areas for improvement in crane assembly. The adjustments we made reduced the assembly time from seven days to three.

Aaron Nicklaus King
Project Manager, STT GDC Philippines



Unified Communication Platform

Perhaps most critically for project owners, Evercam established a single source of truth that aligned all stakeholders around consistent information.

"Evercam provided a central platform—essentially a single source of truth for the site's progress," the project manager explains. "All stakeholders, including our Singapore investors and local investors, have access to the same information, reducing confusion and miscommunication when reporting progress."

This visual documentation transformed stakeholder engagement. ***"Images and videos are far more effective than text-based presentations,"*** notes King. ***"We're also able to showcase progress to potential customers, giving them confidence in our execution capabilities."***



Evercam provided a central platform—essentially a single source of truth for the site's progress. All stakeholders, including our Singapore investors and local investors, have access to the same information, reducing confusion and miscommunication when reporting progress.

Aaron Nicklaus King

Project Manager, STT GDC Philippines





"All stakeholders, including our Singapore investors and local investors, have access to the same information, reducing confusion and miscommunication when reporting progress."

Aaron Nicklaus King

Project Manager, STT GDC Philippines

Results & Impact

The implementation of Evercam at STT Fairview 1 delivered significant improvements:

Faster Critical Path Activities

By analyzing historical footage, the team identified efficiency opportunities in the crane assembly process—reducing it from seven days to three days.

Improved Safety Compliance

The ability to continuously monitor safety compliance and identify potential hazards created a more proactive safety environment. Historical footage analysis allowed the team to investigate safety concerns and implement preventative measures.





Reduced Site Visits

"Evercam's live view gives us real-time insight into site activity, allowing for better manpower allocation and reducing unnecessary site visits," notes King.

Streamlined Stakeholder Communication

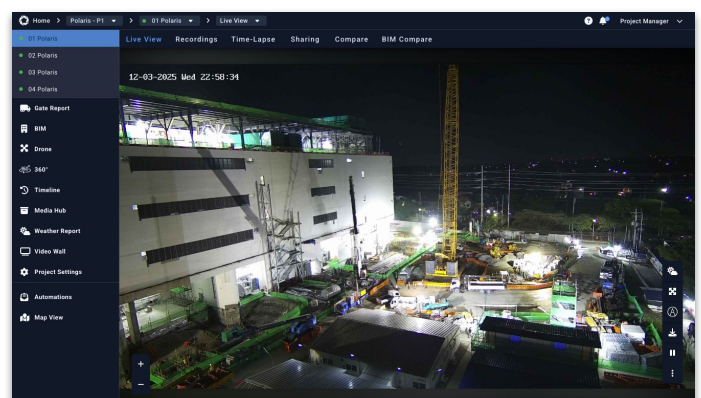
The platform's ability to provide consistent, visual updates to stakeholders significantly reduced communication friction. Remote investors and potential customers could access the same high-quality information without requiring constant site visits. King described the use for multiple stakeholders as such: *"Evercam provided a single source of truth for site progress, ensuring all stakeholders—including local and Singapore-based investors—had access to the same real-time information. The visual documentation reduced miscommunication and made reporting clearer and more effective."*



Evercam's live view gives us real-time insight into site activity, allowing for better manpower allocation and reducing unnecessary site visits.

Aaron Nicklaus King

Project Manager, STT GDC Philippines



Setting New Standards for Data Centre Construction

STT Fairview 1 represents more than just a construction project—it embodies a new approach to how data centre owners can maintain control and visibility throughout complex builds. By leveraging Evercam's technology, STT GDC Philippines has established a template for managing massive infrastructure projects while maintaining their exacting standards for safety, sustainability, and quality.

The project's success demonstrates how today's data centre owners can harness advanced construction technology to overcome the unique challenges inherent in these specialized facilities. Through comprehensive monitoring, BIM integration, and enhanced stakeholder communication, STT Fairview 1 has established new benchmarks that will influence data centre construction throughout the APAC region and beyond.

For STT GDC Philippines, the project reinforces their position as an industry leader committed to innovation, sustainability, and operational excellence.

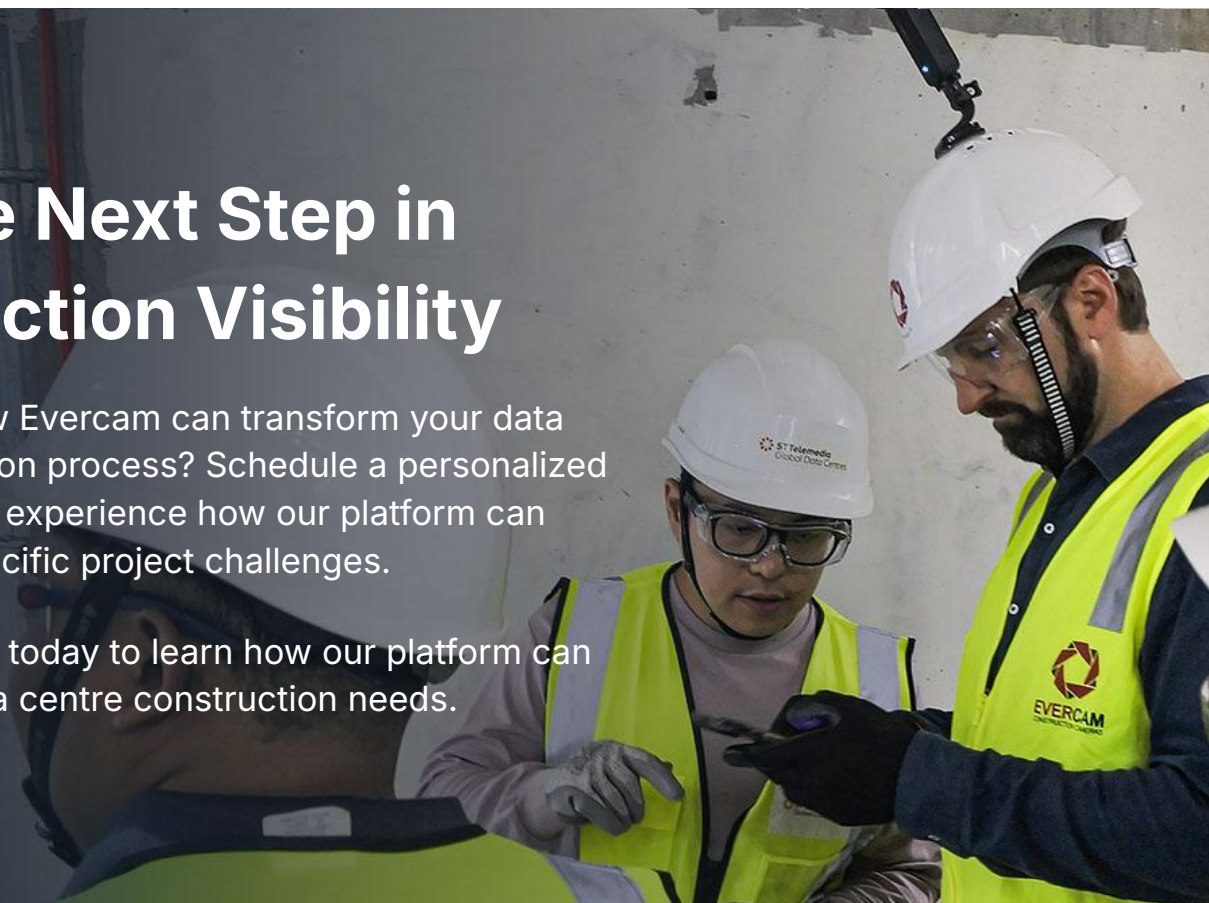
For the industry as a whole, it illustrates how technology-enabled visibility can transform project outcomes even at the most ambitious scale.



Take the Next Step in Construction Visibility

Ready to see how Evercam can transform your data centre construction process? Schedule a personalized demonstration to experience how our platform can address your specific project challenges.

Contact Evercam today to learn how our platform can support your data centre construction needs.



**Ireland**

6-7 Granby Row, Dublin 1,
D01 FW20, Ireland.
+353 19194500

UK

344-354 Grays Inn Rd,
London WC1X 8BP
+44 8000472900

U.S.A

9639 Hillcroft St #2022
Houston, TX 77096
+1 979 315 1010

Singapore

10 Anson Road #22-02,
International Plaza,
079903 Singapore
+65 9699 0677

Australia

Carindale,
Brisbane, QLD 4152
+61 390 212 855

Follow us to learn more!

evercam.com

[!\[\]\(95b425611cbd2b8716a140cf67c81822_img.jpg\) evercam](#)

[!\[\]\(b4eeff342f60cc7bcd67d869b4fedca2_img.jpg\) evercam_](#)

[!\[\]\(4f6bf54ae7e4144a72d78316053e412d_img.jpg\) evrcm](#)

[!\[\]\(3342c215b2a8b663596a81468d5dc314_img.jpg\) Evercam](#)