

CaseStudy

How Shell Oil Uses Evercam to Reduce Site Visits and Streamline Project Coordination on Project Vito



The Vito Waterflood Project in the Gulf of America is providing pressure support to the reservoir in order to increase oil recovery in the Vito field.



KOS Large-Scale Module Fabrication

Waterflooding is a secondary recovery method that involves injecting water into the reservoir to push oil toward nearby production wells and help maintain reservoir pressure.

To support this effort, construction and fabrication are taking place at Kiewit Offshore Services (KOS) facility in Ingleside, Texas. At the same time, engineering and design work is being carried out in New Orleans and Houston.





In many cases, we aim to get engineers into the field, but we're often constrained by cost and safety considerations. That's why we deploy Evercam early in the project lifecycle—during stakeholder assessments—so we can align with the project's demands and scope while minimizing unnecessary exposure."

Brent Wahl

Vito Waterflood Topsides Lead, Shell Oil, Project Vito WF

Project Overview

To maintain oversight, improve coordination, and reduce the cost and risk of frequent site visits, the project has adapted remote digital capabilities.

To meet these needs, **Shell implemented Evercam's visual documentation platform, which provided high-resolution video, 360 walkthroughs and centralized access to media content.**

The result is improved visibility for engineers and leadership in Houston and New Orleans, more efficient coordination with contractors and a streamlined approach to managing progress across locations.

*"Engineering and design work is being carried out in New Orleans as well as Houston. **To maintain oversight, improve coordination and reduce the costs and risks of frequent visits,** the project has adapted remote digital capabilities. **That's where Evercam comes into play for our water injection project.**"*

Digital project oversight and progress reporting allow Shell to maintain a high level of safety for their personnel, while maintaining construction schedules and keeping costs down. ***"Evercam is a great opportunity for topside projects - things that sit above sea level. This [Evercam] is a good asset for value added for the project managers and folks in the field, especially when you're in full construction."***

Stacy Fresquez

Vito Waterflood Project Director, Shell Oil, Project Vito WF

The Challenge: Coordinating a Large-Scale Project

Coordinating a project of this scale presented several logistical and operational hurdles. Shell's engineering and leadership teams, primarily based in Houston and New Orleans, needed to **track detailed progress at the KOS yard without making repeated in-person visits**. Site access was limited and travel required significant time and resources.

Contractor coordination also depended on clear communication. **Without shared visual tools, updates often relied on manual walkthroughs, email threads or delayed reports**. Media from multiple sources such as drone, 360 camera and fixed view needed to be accessible in one place to support fast and confident decisions.

"The system enables faster decision making rather than introducing another level of oversight across engineering and contract groups. It streamlines our progress reporting and provides better coordination between our teams in Houston and New Orleans."

Brent Wahl

Vito Waterflood Topsides Lead, Shell Oil, Project Vito WF





We achieved approximately a 20% reduction in the number of physical site visits and about 15% savings on original planned travel costs.

This is particularly important for a project of this magnitude where we have teams across multiple locations.

Jimmy Mendoza

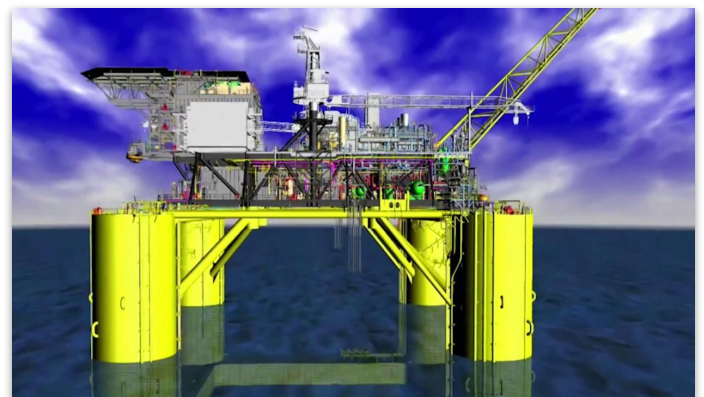
Vito Waterflood Construction Site Lead,
Milestone, Project W

The Solution: Improved Visibility From Afar

To improve visibility, reduce site visits and streamline project coordination, Shell implemented Evercam's construction camera platform at the KOS site. This included fixed-position cameras and 360 walkthrough tools. **The platform gave Shell's Houston and New Orleans-based team consistent access to site activity without needing to be physically present.**

Serial 360 photo walks documented progress on key areas such as the Water Treatment and Pump Modules. Fixed cameras provided live view, time-lapse and playback features, helping stakeholders monitor site conditions and verify activity remotely.

As a result, **Shell reduced the number of physical site visits by approximately 20%, with each avoided visit saving an estimated 15% of planned travel costs.**





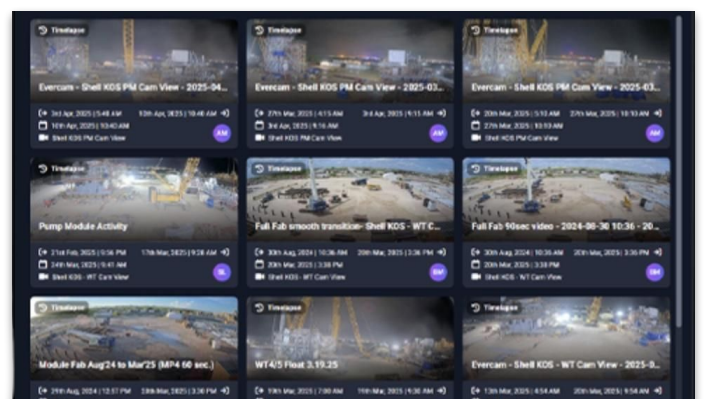
We worked with Evercam in the past to install an intrinsically safe camera, and we'll likely use this fixed camera again during the upcoming module lifts. While it will be a privilege to witness the lift in person on the platform, this tool gives the broader team a safe and reliable way to view the operation digitally.

Bethany Massey, Vito Waterflood Project
Engineer Lead, Shell Oil, Project Vito WF

Proactive Safety Management

Shell used Evercam's fixed camera system to improve safety visibility across the project. The ability to monitor project conditions in real time gave the team tools to identify potential risks early, and ensure exclusion zones were heeded. By reducing the need for in-person checks, Evercam also helped limit personnel exposure to on-site hazards.

Planning is also underway for an offshore deployment, which may require an **intrinsically safe camera** (a device engineered to prevent sparks or high heat that could ignite flammable materials). These are often required in offshore environments to comply with safety regulations and allow continued visual monitoring in high-risk zones.



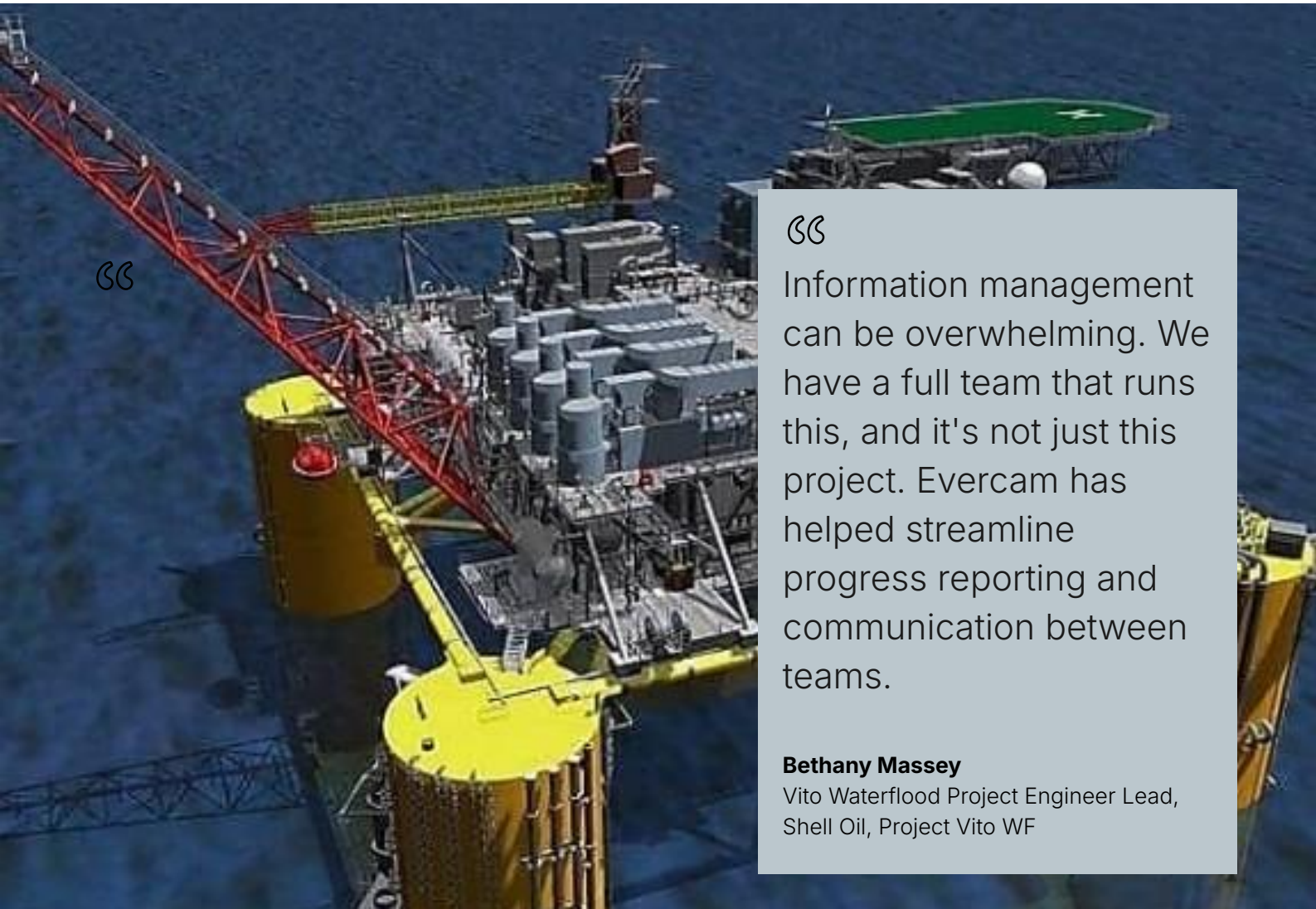
Daily Communication

Shell integrated Evercam into its regular project check-ins, **using fixed camera views and 360 walkthroughs to support faster, clearer communication.** Instead of relying on site visits or lengthy email chains, teams reviewed real-time visuals and recent walk data to align on progress, resolve questions and coordinate next steps. **The platform became a shared reference point to help reduce delays** and support informed decision-making.



Streamlined Progress Reporting

With consistent 360 walkthroughs and fixed camera footage, **Shell gained a visual record of site activity that supported progress tracking without added overhead.** Project stakeholders could view recent work, verify updates and compare current conditions to previous states without being on-site.



Information management can be overwhelming. We have a full team that runs this, and it's not just this project. Evercam has helped streamline progress reporting and communication between teams.

Bethany Massey

Vito Waterflood Project Engineer Lead,
Shell Oil, Project Vito WF



Comparing As-Planned to As-Built

The 360 Evercam tool also saved subcontractors time and money by reducing necessary mobilization and site walks. Noah Smithwick's team compared the 3D model to the 360-camera view to identify where his team had clearance to load test monorails.

*"It was identified that there was scaffolding obstructing our load testing path. **We were able to check all 8 monorail locations and identify which areas were accessible** and take model dimensions to confirm clearance areas. **A few hours of a tabletop exercise saved us mobilization and field walk time.**"*

Noah Smithwick, P.E.

Vito Waterflood Project Director for Smithwick Engineering & Inspection

For the Smithwick team, site walks were still performed as the operation drew closer, but at a time when they understood what their obstructions were, and they could communicate with the construction team to understand the planned timing for their removal.

The tool didn't replace a site walk, but it optimized the amount of site walks required by allowing workers to do a little upfront planning in the tool.

Lastly, to check clearances, they used the 3D model side-by-side comparison to understand what the final condition of the spaces would look like. This eliminates the surprises of late installations or construction sequencing that could have affected them if they relied solely on the field walks.



“

My peers and colleagues will likely adapt many of the lessons and processes learned on this project to future work.

Raleigh Shepherd

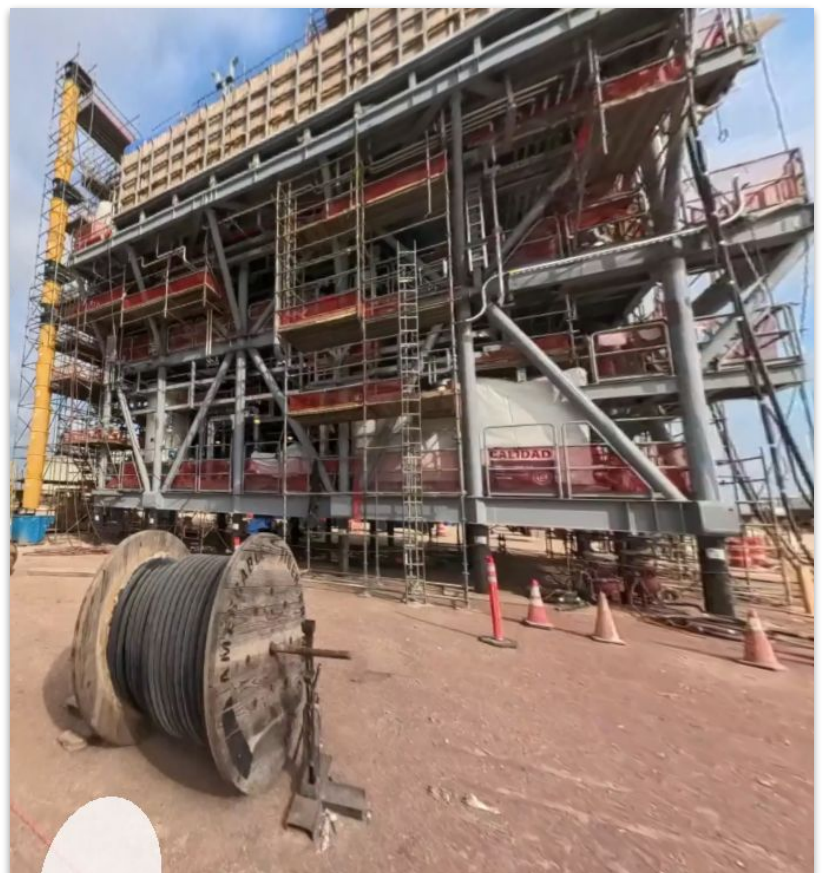
Vito Waterflood Project Manager, Kiewit, Project Vito WF

Results & Impact

Shell's deployment of Evercam at the KOS site delivered measurable gains in efficiency, safety and coordination. Key outcomes included:

- Approximately 20% reduction in in-person site visits
- Estimated savings of 15% of planned travel costs per avoided visit in travel and labor
- Consistent use of 360 walkthroughs for progress verification and inspection
- Fixed cameras integrated into daily and planning workflows
- 360-only contractor portal launched with 30+ active users
- Introduced another level of assurance across engineering and contractor teams

These results positioned the KOS deployment as a reference model for future Shell projects evaluating remote access and visual documentation.



Looking Ahead: Setting New Benchmarks for Communication

Shell's deployment of Evercam at the KOS site has set a new benchmark for visibility and coordination in complex fabrication projects. This success is already influencing future initiatives, including plans for offshore camera installation once the fabricated modules safely get transported and lifted onto the Vito host in the Gulf of America.

By prioritizing reduced site visits, enhanced safety protocols, and seamless global collaboration, Shell is actively expanding Evercam's role across other projects.

In collaboration with **Shawn Landry, Vito Waterflood Project Information Manager (PIM) & IT Lead for Shell Oil**, the insights gathered in this Case Study demonstrate how Evercam supports the Shell KOS team in driving internal workflow improvements and shaping strategic discussions around long-term platform adoption and comprehensive visual documentation.

For the industry as a whole, it illustrates how technology-enabled visibility can transform project outcomes even at the most ambitious scale.



Take the Next Step in Construction Visibility

Contact Evercam today to learn how our platform can support your construction needs.

**Ireland**

6-7 Granby Row, Dublin 1,
D01 FW20, Ireland.
+353 19194500

UK

344-354 Grays Inn Rd,
London WC1X 8BP
+44 8000472900

U.S.A

9639 Hillcroft St #2022
Houston, TX 77096
+1 979 315 1010

Singapore

10 Anson Road #22-02,
International Plaza,
079903 Singapore
+65 9699 0677

Australia


Carindale,
Brisbane, QLD 4152
+61 390 212 855

Follow us to learn more!

evercam.com

 [evercam](https://www.linkedin.com/company/evercam)

 [evercam_](https://www.instagram.com/evercam_)

 [evrcm](https://twitter.com/evrcm)

 [Evercam](https://www.youtube.com/evercam)