

27-29 MARCH 2026
**EXHIBITOR
INFOPACK**

MELBOURNE
CONVENTION &
EXHIBITION
CENTRE





WELCOME BACK ARTISTS!

MELBOURNE'S PREMIUM **INKED EXPO**
RETURNS FOR 2026

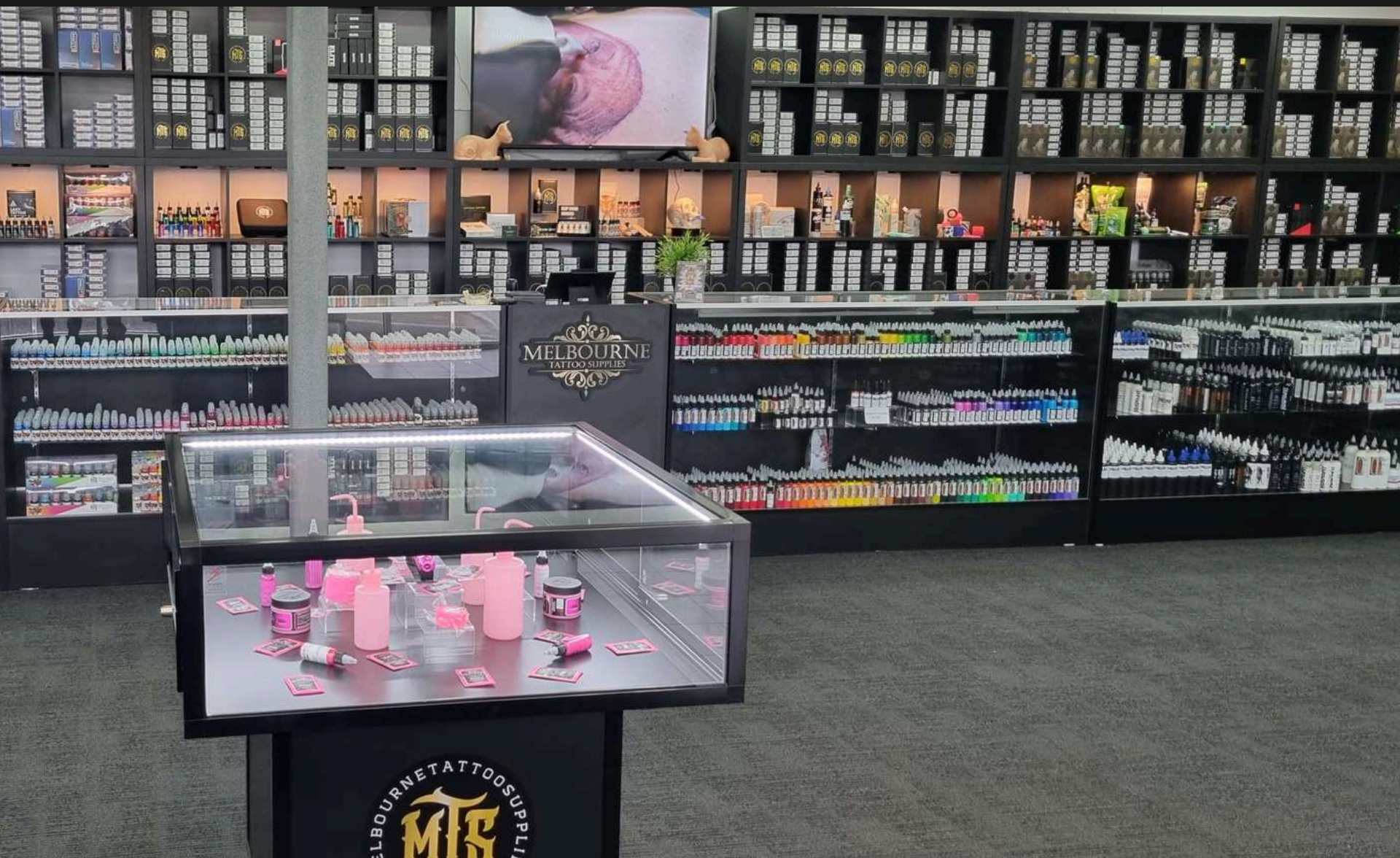
PROUDLY PRESENTED BY MTS



MTS is an Australia and New Zealand wide tattoo supplier run by artists for artists. We believe in providing the best tattoo equipment we can get our hands on, from tattoo inks, tattoo needles, tattoo machines and so much more.

We are your one stop shop and are constantly and consistently expanding our product range. Stay ahead of the curve with our constantly updated and expanding product selection, designed to meet the needs of every artist.

- ✕ Inks & Needle Cartridges, Accessories
- ✕ Tattoo Machines, Power Supplies Stencil
- ✕ Products & Studio Supplies

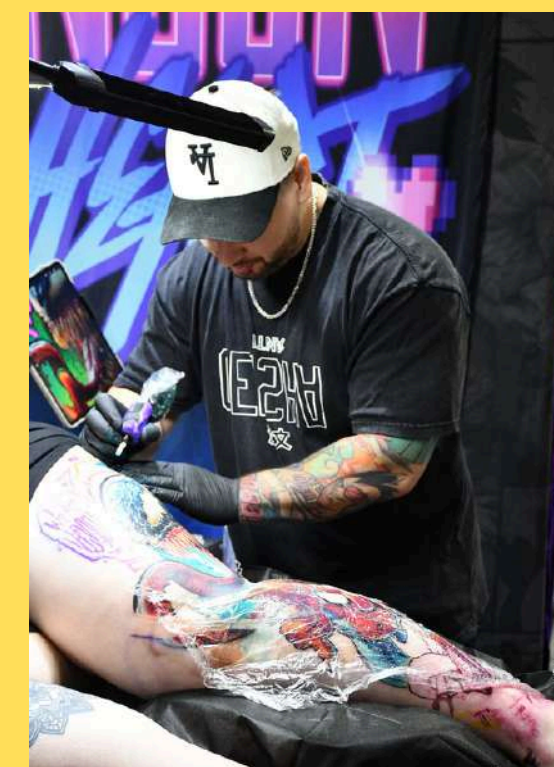
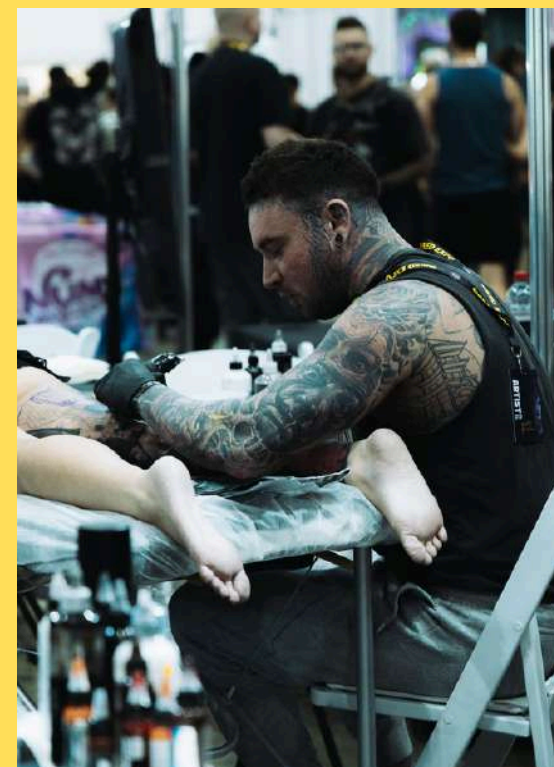


Phone: 03 9939 0167
Shop: F2/44 Mahoneys Rd, Thomastown
Instagram: @melbournetattoosupplies

WHY INKED EXPO?

After a hugely successful three shows consecutively in 2023, 2024 and 2025 - we are back to celebrate all things inked and body art lifestyle. Showcasing quality tattoo artists from Australia and around the world.

Led by the team at Melbourne Tattoo Supplies, we are stoked to see the return of Inked Expo to offer both artists and crowds a unique weekend experience with live bands, body modification techniques and industry talk panels.



A 3-DAY WEEK -END EXPO

**FRI-SAT
10AM-9PM**

**SUN
10AM-7PM**



MELBOURNE CONVENTION & EXHIBITION CENTRE

1 Convention Centre Pl, South Wharf VIC 3006



WHAT'S INCLUDED?

280+ LIVE ARTISTS

50+ VENDORS

ENTERTAINMENT

POP CULTURE

LIVE ART

APPRENTICE GAMES

TATTOO AWARDS

ARTIST BOOTHS

**PER
ARTIST**

2.5M X 2.5M

\$1,500

inc. GST

Sale Conditions:

- Minimum 50% deposit upfront to secure your booth
- Deposits paid are non-refundable
- Remainder of payments must be made 4 weeks prior to the event, or your booth may be re-sold
- Extra furniture and equipment outside of booth inclusions are sole responsibility of the artists
- All prices are GST inclusive.

INCLUSIONS

PER 2.5M SPACE

ARTIST BOOTHS

Artist Booths include:

- 2.4m High Back Wall
- 1.2m High Side Walls
- 1 x 10amp Power-Point
- 1 x 300W Light
- 1 x Sharps Container
- 1 x Hazardous Waste Bin
- 1 x 1.8m trestle Table
- 2 x Foldable Artist Chairs
- 1 x Exam table

COMPLIMENTARY FACILITIES

- Printing Facilities Stencil
- Machines Photocopying



VENDOR BOOTHS

VENDOR STALLS

2.5M X 2M

\$1,250
inc. GST

Sale Conditions:

- Minimum 50% deposit upfront to secure your booth
- Deposits paid are non-refundable
- Remainder of payments must be made 4 weeks prior to the event, or your booth may be re-sold
- Extra furniture and equipment outside of booth inclusions are sole responsibility of the artists
- All prices are GST inclusive.

INCLUSIONS

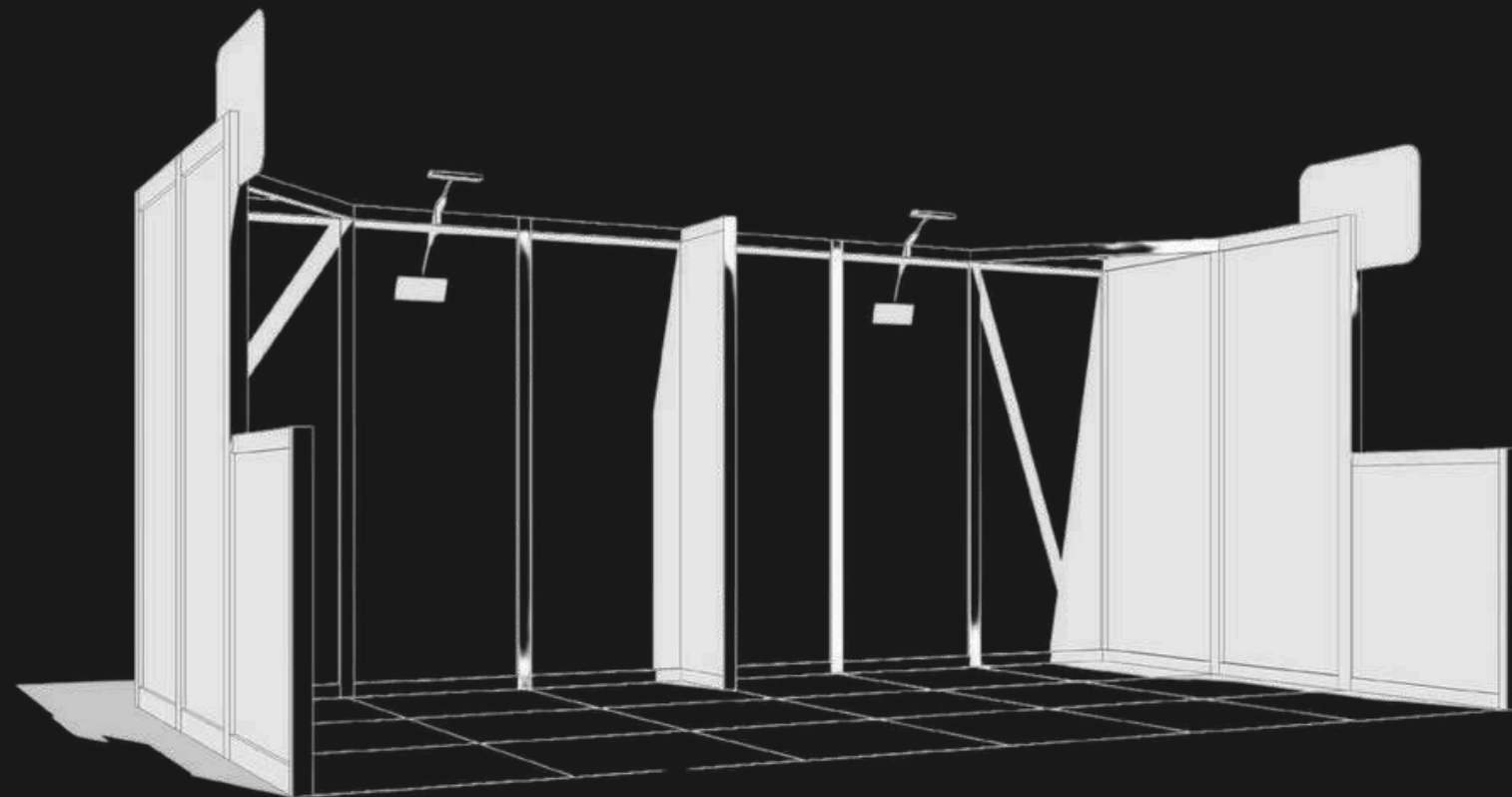
PER 2.5M SPACE

VENDOR BOOTHS

- 2.4m High Back Wall
- 1.2m High Side Walls
- 1 x 10amp Power-Point
- 1 x 300W Light
- 1 x 1.8m trestle Table
- 2 x Foldable Artist Chairs

BOOTH GUIDELINES

MORE INFO AT INKDEXPO.COM.AU



ITEMS ALLOWED ON WALLS

When attaching anything to walls, exhibitors are asked to only use velcro tape, bluetac, double sided adhesive tape or wall-mounted shelving.



ITEMS NOT ALLOWED ON WALLS

Please do not use pins, staples, screws, nails, bolts, glue or paint as these causes permanent damage to the panels. Charges will apply to *all* damage to wall panels.



BANNED ITEMS

- No Promo Models roaming around the venue outside of your allocated exhibitor booth space
- No animals (all Registered Service Animals must be pre-notified)
- No height displays or props taller than the booth walls (2.5m High)
- No overhanging of racks or stock into the walkways outside of allocated booth space



PAST EVENT PARTNERS



**TATTOO
ARMOUR®**



Removery
The world's tattoo removal experts



WE LOOK FORWARD TO WORKING TOGETHER

INKEDEXPO.COM.AU

CHRIS JENSEN
DIRECTOR

CHRIS@INKEDEXPO.COM.AU

0423 450 041

JESSICA COOPER
ACCOUNT SALES MANAGER

ADMIN@INKEDEXPO.COM.AU

0420 886 733

MEL YU
OPERATIONS MANAGER

MELISSA@INKEDEXPO.COM.AU

0413 185 088