

MAY/JUNE 2025 • page 1

CALENDAR OF EVENTS

- June 6** First Friday Opening, SWS Signature Show, 5:00-8:00 p.m.
Liberty Gallery, 203 N. Washington, Spokane (upstairs at Auntie's Bookshop), People's Choice Award announced at 7:30 p.m.
- June 19** Men's Breakfast Club, Molly's Café, 224 S. Lincoln Street, Spokane 9:00 a.m. (This will be the last meeting until September 18!)
- June 21** SWS General Meeting & Plein Air Event, at Carrie Dugovic's Saturday, 10:00 a.m. to 3:00 p.m., 20311 N. Little Spokane Drive, Colbert, WA (see below)
- June 27** **ATTENTION—DATE CHANGE!**
Painting Pick-Up (Signature Show), 10:00 a.m.—Noon, Liberty Gallery, 203 N. Washington, Spokane (upstairs at Auntie's Bookshop)
- July 18** Plein Air Event at Terese Fandel's, Hayden, ID
Friday, 10:00 a.m. to 2:00 p.m, DETAILS WILL BE FORTHCOMING
- August 18** CenterPlace Exhibition Set-up, Spokane Valley, WA
See pg. 5 for more details

Summer is coming...there are no formal SWS meetings, or newsletters, during July and August!

Challenge
PAINTING
JUNE
SPONGES
Natural/Synthetic
(or what's on your easel)
SUBJECT OF YOUR CHOICE

Carrie's Plein Air Event

SATURDAY, JUNE 21, 10:00 am to 3:00 pm

20311 N Little Spokane Dr., Colbert, WA
(Our home is at the end of Backacre Road, approx. 1/4 mile after the turn off of Little Spokane Drive)

Park anywhere along the long driveway—our home is down the steps from the second garage.

Chairs are provided, or bring your own if you prefer.

Coffee, tea and water provided. Bring a lunch, and a snack to share if desired.



SEE Pg. 2 for TIPS on SPONGING & SPONGES

MARK YOUR CALENDARS!

2025 SWS Members' Show
will be in September at Spokane Art School Gallery

First Friday Reception
September 5
5:00-8:00 p.m.

Watch for the prospectus, coming soon...

From north on Highway 2, turn left on Woolard, go under the railroad trestle then continue straight onto Little Spokane Drive. Go over the county bridge just past the white house on the right, up the hill, then right on Backacres at the set of mailboxes, an unimproved private road. Follow the road all the way until the end. Our home is down the steps at the second garage. Alternatively, you can come from Highway 395 North, right on Hatch Rd, right on N Perry, left on Backacres Rd

<https://maps.app.goo.gl/Nrg8PK2o3XryCA4R6>

MAY/JUNE 2025 • page 2

Plan to attend the First Friday Reception on June 6—
listen to live violin music, vote for the

People's Choice Award, and enjoy chatting with your fellow SWS members, at Liberty Gallery, from 5-8 pm!

Happening at the
Liberty Gallery ~ June 2025



Watercolor Experience

The 2025 Spokane Watercolor Society "Signature Members" Show
When: May 25 - June 28, 2025
Where: Liberty Gallery, 203 N Washington Street, Spokane
On the Mezzanine in the Historical Liberty Building.

First Friday Reception Activities:
June 6, 2025: 5:00pm - 8:00pm
Reception to Meet the Artists: 5:00-8:00 pm
From 5:00-7:00 pm SWS member Donna Stallings will perform on her violin.
At 7:30 pm a People's Choice Award will be presented with viewers eligible to vote until 7:00 pm for their "Choice".
Admission is free

Liberty Gallery Hours:
Sunday - Thursday 10 a.m. - 7 p.m.
Friday & Saturday 10 a.m. - 9 p.m.
For more information: 509-327-6920
potteryplaceplus.com/liberty-gallery

potteryplace PLUS
Celebrating over 45 years of Fine Art

Bring your June Challenge paintings to Carrie's on the 21st. Also, if you complete a plein air painting before we adjourn for lunch, you will be entered into the drawing for the SAS gift certificate!

MEMBERSHIP CORNER

The Board needs you!

A **SHOW CHAIR** is needed for this year's Juried Members Show (taking place in September 2025). Training and mentoring will be provided. Please consider volunteering to help! If interested, please contact Kim at swspresident1@gmail.com.



June Challenge Tips

By Diana Postlewait

SPONGES (Natural & Synthetic)

Sponging can be a quick, easy and effective technique to create trees, flowers, backgrounds, texture and more. And you can use your sponge (clean) to wet your paper. Natural Sponges seem to be the best or preferred type of sponge to use. They are best if they have spike-like pieces, are stiff and keep their shape. Synthetic Sponges work just as well but you might not get as much texture from them. Sponges are mostly used for trees and flowers. You can also create some interesting backgrounds, soft textures and visual effects with sponges. Techniques: Use a small piece of sponge (they hold a lot of water and paint). Wet the sponge, squeeze it out, dab it into the paint then dab it onto your painting. When creating trees and some flowers, dab on the lighter colors first. Allow that color to dry or almost dry before dabbing on a darker color. Practice first to master the technique.

PAINTING FROM DEB WATSON IN
GENRE, LANDSCAPE, TECHNIQUES



WELCOME NEW MEMBERS!

Ladd Bjorneby, Liberty Lake, WA

YOUR PRIVACY IS IMPORTANT to Spokane Watercolor Society!

Your contact information is included in our roster, so that members can contact each other. This is only accessible by logging on to www.spokanewatercolor.org with your user name and password, under the heading "MY SWS". If you DO NOT want your contact information on this roster, please contact: swspresident1@gmail.com.

MAY/JUNE 2025 • page 3

MAY/JUNE 2025 • Page 3

May Meeting Highlights



This month's meeting was Zoom, with some members gathering at Spokane Art Supply to paint along with this month's demo artist. A new member and several guests were introduced, along with Challenge Paintings and announcements. THANK YOU KIM GARDELL FOR THE PHOTOS.

Challenge Paintings

MEMBERS presented paintings using the Challenge techniques of **VARIEGATED WASHES** and **NEGATIVE PAINTING**. *Great work everyone!* Trish and Sherri won the \$15 gift certificates from Spokane Art Supply.



SPONSOR FEATURE

DANIEL SMITH

WORLD'S FINEST ARTISTS' PAINTS

Made in USA Since 1976

Daniel Smith Inc. manufactures professional artist quality watercolor paints, gouache paints and mediums. Owner John Cogley maintains an unwavering commitment to quality and innovation, so that artists worldwide can always rely on the stellar performance of DANIEL SMITH products, which are proudly made in the USA since 1976. Dan Smith, the founder, decided to learn how to make his own inks, and sold his motorcycle to fund his idea to become an art materials retailer, and the company was founded in Seattle, WA (our own backyard). Their signature watercolors include Extra Fine Watercolors defined as classic watercolors of unsurpassed purity and permanence, Quinacridone colors with fantastic pigments, and Luminescent watercolors.

DANIEL SMITH Extra Fine™ Watercolors



Mix Colors with Ease



Widest Range of Colors to Choose From



Highest Pigment Load

Dan Smith sums up the company's philosophy... *"It's so important for artists to have access to products that increase their ability to express themselves and create beauty. I was never entirely motivated by making money—it has always been about making art. Art is a virtuous endeavor and deserves our respect."*

Daniel Smith has been one of our valued sponsors for many years and we are so grateful for them, and their wonderful products.

<https://danielsmith.com>



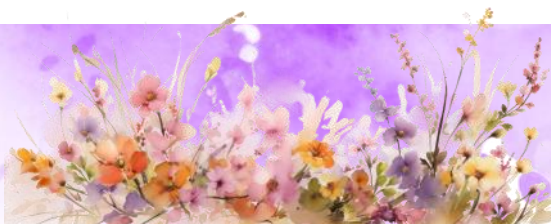
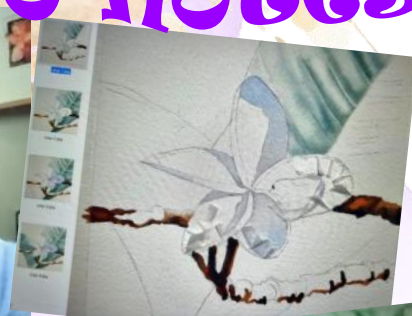
Kathleen Alexander presented a mesmerizing demo on Hawaiian Floral Painting at this month's meeting. Her work has a strong sense of light and shadow, which is achieved with a very deliberate technique of blending her paint colors. She starts with a pea size amount of fresh paint, mixed with water in stackable palettes—she doesn't like to use dry paint. Her brushes of choice are Escoda Kolinsky and Princeton Catalyst (for softening edges). She always starts by painting in the shadows of the flower and then meticulously brings in the color. She loaded 3 brushes with paint (Permanent Rose, Pyro Orange and Magenta) and one with clear water. She starts with clear water on the section she will paint. She often masks the petal edge with drafting tape but that can only be used on dry paper that has not been painted.

She paints the lighter values and can dilute them as necessary and then adds the shadow colors with stronger pigments (often on dry paper). She then cleans up her edges with a flat brush. The background is all "soft edges" to enhance the subject flower. Her formula for leaves is to do the veins first with Indigo, Prussian Green, and Pthalo Blue and then overpaints with Sap Green. The lights are often a combo of Burnt Sienna and Pyro Orange. She loosens the hard edges with water, and removes any mistakes with a small piece of wet Mr. Clean Magic Eraser. You can check out her website at

www.kathleenalexanderart.com.

She is having a Zoom Watercolor Workshop June 7-8, details of which are on her website.

Thank you Kathleen—we all learned a lot!



Brushstrokes

Summer Opportunities

SWS PLEIN AIR SUMMER PROGRAM

June 21...Plein Air at Carrie's, Colbert, WA

July 18...Plein Air at Terese's, Hayden, ID (details next issue)

August...Plein Air at Sue's ranch (details next issue)

PAINT with us this summer,
and enter your masterpieces in
these exciting opportunities!

The Art Spirit Gallery of Coeur d'

Alene invites local and regional plein air artists to participate in a curated exhibition in their intimate Upper Gallery this **October 4-26, 2025** with the opening reception on October 4. Artists may submit up to three works through their jotform (LINK BELOW).

Submitted works must have been created in 2025, reflect regional scenes and should have been created on-site en plein air.

SUBMISSION DEADLINE IS AUGUST 30.

For complete info and submission form, visit...

<https://form.jotform.com/251296574039161>

CENTERPLACE EVENT CENTER

2426 N. Discovery Place, Spokane Valley, WA

Sue has procured this exciting exhibition opportunity for the Spokane Watercolor Society. **Set up day is August 18, 12:00 p.m. and we have the space through October 13.** The space is secure, and is located in a main entry for the center, and gets a lot of traffic. The space consists of glass shelves with locking glass fronts. There is room for about 67 works of art, depending on sizes—a limited number of larger pieces can be accommodated. **THIS IS A FIRST-COME, FIRST-SERVED OPPORTUNITY**, so if you are interested, please contact Sue with your name, phone number, and a list of artworks and framed sizes (approx. 8-10 pieces per artist, depending on participation).

Artwork needs to be original, framed nicely and socially acceptable. Artwork does not need to be recent but should be some of your finest work to showcase you as an artist. The artist is responsible for all sales and artwork needs to have a card with the title, and your name and number, if you plan to sell it. It is easiest to make a table-tent type of card. It is also advisable to use clear sticky dots and/or small easels to keep the framed pieces from sliding on the shelves. You will be responsible for the section allotted to you which means cleaning and dusting before setting up your area.

For more information and to claim your space, please contact:

Sue Rohrbach, Exhibit Coordinator
(509) 990-8441; suerohrbach@hotmail.com

Art on the Green Plein Air

Information and registration is now available at

www.pleinaircda.com.

Delivery date is July 31.

Also get a free Plein Air lesson from Jessica Bryant at:

<https://youtu.be/BhCARluEQc>



Northwest Watercolor Society 85th Annual International Open Exhibition

Nov. 8-Dec. 1, 2025

Yuan Ru Art Center
Bellevue, Washington

Get complete prospectus at

www.nwws.org

(members receive reduced entry rate)

ENTRY DEADLINE: July 10, 2025

