

May 28, 2024 • page 1



CALENDAR OF EVENTS

- June 1** **PLEIN AIR EVENT**, 10:00 am
Carrie Dugovic will host a Plein Air Event at her place at 20311 N. Little Spokane Drive, Colbert, WA (see directions on SWS website) RSVP at 509-389-9500 or carrie.dugovic@gmail.com
- June 1** **ENTRIES OPEN FOR OUR FALL MEMBERSHIP SHOW**
- CHANGE OF VENUE — PLEASE NOTE!**
- June 15** **PLEIN AIR PAINTING WITH MEGAN PERKINS**, 10:00 am—12:00 pm
Riverside State Park, Bowl and Pitcher, Spokane, WA
[See details and sign up information on page 2](#)
- July 5** **SUBMISSIONS CLOSE FOR OUR FALL MEMBERSHIP SHOW**
- Aug. 30** **ACCEPTED ARTWORKS TO SPOKANE ART SCHOOL GALLERY**, 10:00—11:30 am; 503 East Second Avenue, Unit B, Spokane
- Sept. 6** **MEMBERS SHOW OPENS at Spokane Art School Gallery**,
Show Chairs: Kim Gardell/Diana Postlewait
5:00—8:00 pm; First Friday Reception and **Awards Ceremony**

Challenge PAINTING

Saturday, June 15

TRANSPORTATION

(cars, trains, planes

or horses, etc.)*

(or what's on your easel)

Remember to check the SWS website at www.spokanewatercolor.org for all the latest information.

*Bring your challenge paintings to Riverside State Park on the 15th.

We NEED You!

Please consider
VOLUNTEERING to fill the
following positions...

SHOW CHAIR

for our Spring 2025 National
Show. All training and men-
toring will be provided.

BOARD POSITIONS

several will become vacant
this year.

Share your skills and talents
with SWS and help the society
continue to provide the pro-
grams and shows that we all love
and look forward to. WE CAN'T
DO IT WITHOUT YOU.

PLEASE CONTACT

swspresident1@gmail.com or
sws.board.vice@gmail.com

MEMBERS SHOW

Things to remember:

- Juror is Lisa Hill (our Feb. Demo artist)
- Awards are in excess of \$700 cash & merchandise
- Show ends on Sept. 27
- Artwork pickup on Oct. 1
- Painting sizes (any dimension) 8" minimum—consult prospectus
- Frame size maximum is 30" width and 30 lbs.
- Submit your bio and photograph with your entry
- SHOW CHAIRS: Diana Postlewait & Kim Gardell
- CONSULT YOUR PROSPECTUS for details

SPOKANE WATERCOLOR SOCIETY



CALL FOR ENTRIES

2024 JURIED MEMBER SHOW

Entries accepted June 1 to July 5
go to spokanewatercolor.org for prospectus



For information:
sws.board.show@gmail.com

May 28, 2024 • page 2

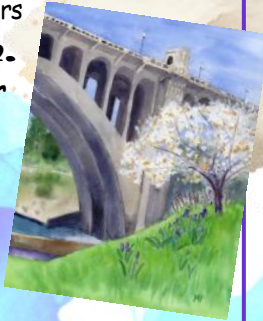


Meet Megan Perkins

Plein Air Painter and Urban Sketcher
for instruction on painting outdoors

June 15th, 10 a.m.

Bowl and Pitcher Kitchen Shelter
Riverside State Park



WHAT TO BRING:

- A watercolor sketchbook or loose leaf watercolor paper (a couple sheets at least 90 lb.—140 lb. preferred) with a rigid backing to provide support (clips or painter's tape recommended), pencil, eraser.
- Other drawing tools as desired: pens, colored pencils, markers, watercolor pencils, water soluble pens, etc.
- At minimum bring a large round and a small round brush. Princeton Snap brushes are recommended as good, affordable starters—sizes 6 and 12 or just bring a selection of rounds in various sizes. One should be pretty big so you can get plenty of paint moving across the paper (size 20 or big quill brush). A large flat (2" or more) to wet the paper can also be helpful.
- Paper towels and a cup for paint water.
- Please prepare to be out in warm weather (water bottle, sunscreen, hat, and comfortable shoes). If student has difficulty sitting on the ground or on various surfaces please bring a folding stool or camp chair.
- If you have a standing plein air easel that you've used for watercolor plein air, feel free to bring that as well.

Bring a PACKED LUNCH—Rain or Shine!

Riverside State Park • 4427 N Aubrey L • White Parkway, Spokane
(509) 465-5064 • <https://g.co/kgs/k7VTFSE>

A Discover pass is required and parking is limited. Kim Gardell and Kathi Eckerich are offering transportation from Spokane Art Supply meeting at 9:30 a.m. on Saturday, June 15.

Please email kathieckerich@gmail.com to request a ride. She will also need an RSVP to know if you are participating.

Out & About & UPCOMING OPPORTUNITIES

Palouse Watercolor Socius 50th Anniversary Show

June 2-30 at Dahmen Barn, 419 N. Parkway, Uniontown, WA
Reception on June 2, 1:00-3:00 p.m. (free and open to the public)

Chewelah Plein Air 2024, Trails End Gallery

Show will hang from June 5-29 at 204 E. Main, Chewelah, WA
Show opening June 6, 5:00-8:00 p.m. as part of First Thursday Art Walk (Plein Air pieces were painted Memorial Day Weekend)

The 56th Annual Art on the Green

Aug. 2, 3, 4, North Idaho College grounds in Coeur d'Alene, ID.
More details on their website at www.artonthegreencda.com.

Juried Show Applications CLOSE May 31, 2024

Regus Spokane Art Show

June 10-15 showcasing local artists in the lounge—artists can put their artwork up for sale or display for free—small space—please contact Bettie Taylor ASAP for details at 509-570-7400, Wells Fargo Center, 601 W. 1st Ave., Ste. 1400, Spokane

Yuletide 2024 sponsored by Spokane Art School

First Friday November 1-2 at 503 E. Second Avenue Suite B, Spokane Applications will close July 12, 2024 for artist's booth space (juried).

CONTACT spokaneartschool@gmail.com
or 509-325-1500 for more info

MEMBERSHIP CORNER

WELCOME NEW MEMBER!

Sarah Koca



Now that the newsletter is up and running again, we will be inviting members to contribute show listings, tips and techniques, opportunities, etc. An updated SUBMISSION FORM, with more details, will be available sometime this summer! There will be no editions in July and August.



Did you know that you can still catch up on meetings & demos that you had to miss? Just log in to the SWS website, and go to "My SWS" and you will find archived videos of both the meetings and demos, meeting minutes and a whole lot more!



YOUR PRIVACY IS IMPORTANT to Spokane Watercolor Society!

Your contact information is included in our roster, so that members can contact each other. This is only accessible by logging on to www.spokanewatercolor.org with your user name and password, under the heading "MY SWS". If you DO NOT want your contact information on this roster, please contact: swspresident1@gmail.com.

May 28, 2024 • page 3

Brushstrokes May Challenge Paintings

*Congratulations to Vicki West
SWS Signature Member*



Her painting, *Lilac Legacy*, was awarded **FIRST PLACE** in the Spokane Lilac Festival Juried Art Show.

She was awarded \$1,000, 4 passes for VIP (bleacher) seating and a ride in the parade. There will also be posters and prints as well as display for a whole year. The piece also sold to the SLF Director.

Vicki said of her accomplishment...

*"I couldn't be more pleased,
honored and humbled!"*

CHALLENGE PAINTING REQUEST

It would be helpful if, in addition to bringing your Challenge Paintings to the in-person meetings, **you can email a digital image to Oral (swspresident1@gmail.com) and Carrie (carrie.dugovic@gmail.com)** so that they can produce an album for the website.



MAY FLOWERS

was the theme of this month's challenge.

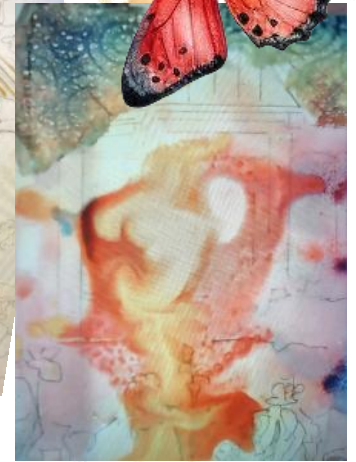
Kim Gardell won the \$15 Spokane Art Supply gift certificate. Congratulations!



May 28, 2024 • page 4

Brushstrokes

May Demo Highlights



ELISE BEATTIE, Spokane's "fearless" artist and SWS Member, gave her "Fearless Techniques" demo over zoom at our May meeting. She was initially inspired in developing her techniques by a book titled *"Pouring Light—Layering Transparent Watercolor"* by Jean H. Grastorf. Tools she uses include: LOTS of Frisket, pouring bin, Martha Stewart baking tools, paint texture rollers, lace and "holey" papers, fruit netting, gesso, and her favorite brushes—Escoda BARROCO rounds (she used sizes 14 and 20 in her demo).

Elise always starts by gessoing her 140/300 lb. watercolor paper, because it takes a lot of abuse. She then applies Frisket to all those areas that she wants to keep white. Her reference photos include a graphic version to show patterns and a black and white for values. After sketching her design onto the gessoed paper, and applying the

Frisket, she is ready to pour. She wets the paper thoroughly with a foam brush or spray bottle, and pours her colors from a condiment-type bottle directly on the paper being careful not to muddy the colors, as she moves the paint around to the desired effect. Then she lays on her pattern papers and allows it to dry thoroughly. She repeats this process (and sometimes adds another layer of Frisket) until she is ready to define the images with her brush and water based paints. After completely drying, and removing the Frisket, she then defines the dark areas and negative shapes, and builds up the dark values and color intensity, layer by layer. At the same time, she cleans up her edges. Her GESSO JUICE is 1 part acrylic matte medium, 1 part gesso and 1 part water. She then uses this to rebrighten whites, soften edges and value transitions, and as a color lightener. She now can adhere any paper collage materials with gesso, and then brush with matte medium. Elise believes in sticking to the same family of colors throughout her painting, and using complimentary colors to their maximum effect. Thank you Elise—that was a wonderful learning experience!



More info on ELISE'S CLASSES: <https://www.beattieartworks.com/spokane-art-supply-workshops.html>

