



OCTOBER 30, 2024 • page 1

## CALENDAR OF EVENTS

**Oct. 31** *Happy Halloween!*

**Nov. 12** SWS Board Meeting via Zoom, Tuesday, 4:00 p.m.

**Nov. 16** **SWS ANNUAL BUSINESS MEETING AND POTLUCK—DETAILS BELOW!**  
10:00 am—12:00 pm; Spokane Art Supply, 1303 N. Monroe St., Spokane  
Look ahead to what's happening with **SWS in 2025!**

**Nov. 28** *Happy Thanksgiving!*



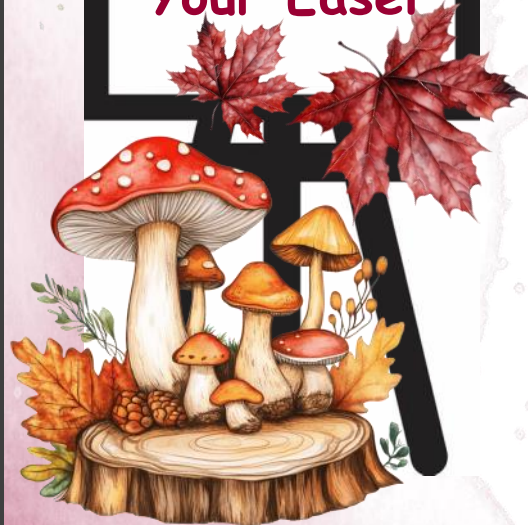
### MARK YOUR CALENDARS!

**December** SWS National Spring Show Entry Submission OPENS.

**Dec. 7** **SWS CHRISTMAS/HOLIDAY MEETING**, Spokane Art Supply,  
Sat., 10:00 am to 12:00 pm, 1303 N. Monroe Street, Spokane  
Art Supply/Equipment/Gifts/Books SWAP—buy, trade, barter, and gift!  
**MORE DETAILS IN THE NEXT NEWSLETTER and VIA EMAIL.**  
Presentation and tour by Kurt Schmierer of the reprographics area in  
Spokane Art Supply!

**Dec. 31** LAST DAY to pay **SWS 2025 Member Dues** to avoid a late fee and keep  
your membership current and in good standing. See page 2..

*Challenge*  
**PAINTING**  
**NOVEMBER 16**  
**What's on**  
**Your Easel**



**Don't miss our...**

## **SWS ANNUAL BUSINESS MEETING & POT LUCK**

**SATURDAY, NOVEMBER 16**  
Spokane Art Supply 10 am-12 pm  
1303 N. Monroe St., Spokane

### **POT LUCK BRUNCH: What to Bring?**

Beverages will be supplied by SWS (coffee, tea, OJ) as well as plates, napkins and tableware.  
Board members will bring the hearty dishes, **so please bring whatever breads, muffins, fruit, veggies and charcuterie you would like!**

### **WHAT BUSINESS WILL WE CONDUCT?**

We will recap 2024 at SWS and see what's in store for 2025! We will also elect board members, AND present the budget, roster and new calendar of events.

**DON'T FORGET YOUR CHALLENGE PAINTINGS!**

## **SNEAK PEEK!**

Spokane Watercolor Society

**2025**

### **National Juried Show**

**April 3—May 4, 2025**

Helen South Alexander Gallery (MAC Annex)  
Terese Fandel/Kim Gardell, Show Chairs  
Juried by award winning artist, Michael Holter

### **National Workshop with Michael Holter**

**April, 2025**

Spokane Art Supply

**Details are still being finalized!**

**AND WILL BE PUBLISHED SOMETIME IN NOVEMBER SO LOOK FOR EMAILS, PROSPECTUS, AND ANNOUNCEMENT AT OUR NOVEMBER MEETING!**





OCTOBER 30, 2024 • page 2

## MEMBERS' SHOW

Jeannine Marx Fruci  
and Lisa Marie Brown  
are having a show at

### BARRISTER WINERY

1213 W. Railroad Alley  
Spokane, WA

Join them for

### First Friday Reception

November 1, 2024, 6:00-10:00 p.m.

Wine, Art, Dancing, and Bring Your Own Food  
Jeannine is making her famous  
chocolate-dipped strawberries!

Their show will run November 1-27, 2024

MORE INFO: Barrister Winery (509) 465-3591

Jeannine (509) 879-5337

JMarxArt@gmail.com, JMarxArt.com

## MEMBERSHIP CORNER

### MEMBER DUES

2025 Dues of \$40 can be paid online now on the SWS website ([www.spokanewatercolor.org](http://www.spokanewatercolor.org)) by logging into your account. An online service fee of \$2 is added by our provider. DUES must be paid before the end of 2024 to avoid a late charge. Please be prompt, and pay your dues as soon as possible, as it helps us with bookkeeping and budgeting. THANK YOU!

### BOARD POSITIONS

Several members have agreed to be on the board, but we could use two more!

Share your skills and talents with SWS and help the society continue to provide the programs that we all love and look forward to.

If you are interested in serving on the board,

PLEASE CONTACT Kim at  
[sws.board.vice@gmail.com](mailto:sws.board.vice@gmail.com)



## Out & About & UPCOMING OPPORTUNITIES

SPOKANE ART SCHOOL 503 E. Second Ave. Suite B, Spokane

**YULETIDE 2024**—Friday Nov. 1, 10-8; Saturday Nov. 2, 10-6

Annual festive indoor event showcasing over 20 local fine artists and artisans

**WINTER CLASS PROPOSALS**—Deadline November 30, 2024

Spokane Art School is looking for local artists who would like to teach at the school in general, and specifically for their upcoming Winter Session coming up Jan 13-March 2, 2025. For info, contact them at (509) 325-1500 or...

[www.spokaneartschool.net](http://www.spokaneartschool.net)

SPOKANE VALLEY ARTS COUNCIL

**17th ANNUAL ART AUCTION**—Saturday Nov. 2, 4:00 pm

Centerplace Regional Events Center

2426 N. Discovery Place, Spokane Valley

Fun family-event and exclusive opportunity to purchase quality art from Spokane area artists...consult their website for more info.

[www.spokanevalleyarts.org](http://www.spokanevalleyarts.org)

TERRAIN

**BRRRZAAR 2024**—Saturday Dec. 14, 10 am to 8 pm

River Park Square—all three floors, 808 W. Main Ave., Spokane

One-stop shopping at Spokane's largest all-local art market.

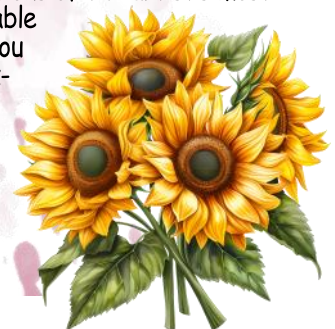
[www.terrainspokane.com](http://www.terrainspokane.com)

**VAN GOGH EXHIBIT—THE IMMERSIVE EXPERIENCE**

Spokane Art Center, 808 N. Ruby Street, Spokane

This traveling exhibit is a 20,000 sq. ft. light and sound spectacular exhibit featuring two-story projections of the artist's most compelling works. Time slots are available every half hour, through December. You won't want to miss this—it is mesmerizing, and there is also a very nice gift

shop with everything Van Gogh.  
Tickets available at  
[www.feverup.com](http://www.feverup.com).



*We currently have 90 members!*

### YOUR PRIVACY IS IMPORTANT to Spokane Watercolor Society!

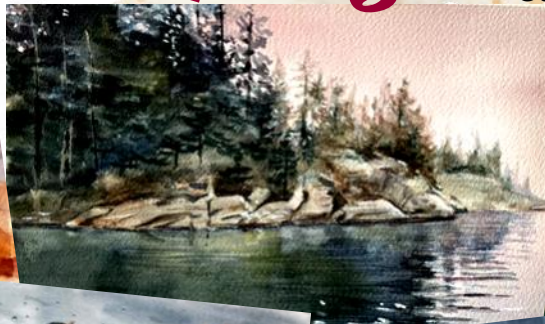
Your contact information is included in our roster, so that members can contact each other. This is only accessible by logging on to [www.spokanewatercolor.org](http://www.spokanewatercolor.org) with your user name and password, under the heading "MY SWS". If you DO NOT want your contact information on this roster, please contact: [swspresident1@gmail.com](mailto:swspresident1@gmail.com).



OCTOBER 30, 2024 • page 3

# Challenge Paintings

**HOLIDAY STILL LIFE**—Diana led the discussions of the members' challenge paintings. Congratulations to **Mary Caruso** who won the \$15 Spokane Art Supply Gift Certificate! **Beautiful work everyone!**



# October Meeting Highlights

October's meeting was Zoom, but we had a **ZOOM LINK OP-TION** at Spokane Art Supply so members could get together for fellowship and painting along with our October demo. About a dozen members took advantage of this, and it was a **FUN OPTION** (and the bugs were worked through).

Diana Postlewait reported on the Members' Show and gave a **big thanks to Kim and all the other members who helped make it a great success!** She is also working on a system to catalog our Artist Bios/headshots so that the show chairs can access them for future shows.

**DISCUSSION ON A.I.** Using any kind of Artificial Intelligence in your work or your reference material is strictly prohibited in SWS shows. Your work and your reference photos should be completely your own, and should not include any copyrighted material, even if you have permission to use it. **TRUST, ETHICS and ARTISTIC INTEGRITY** should always be your guide on this issue.

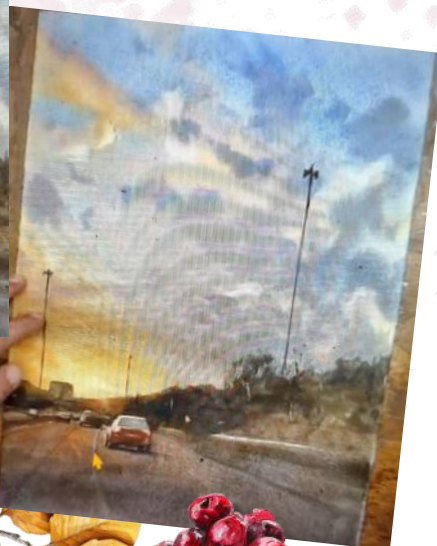
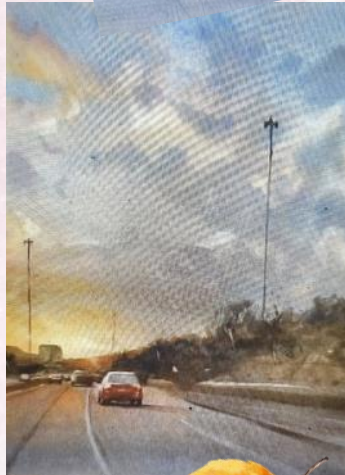
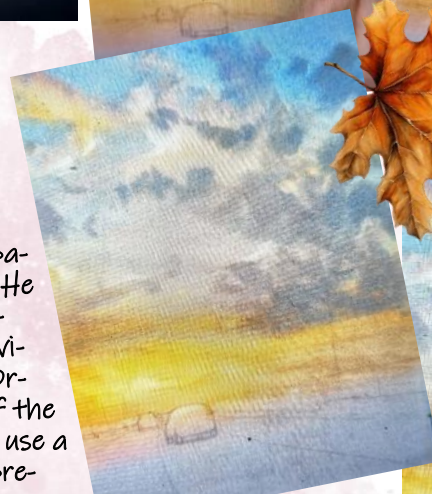
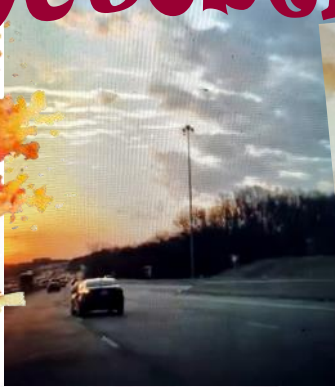
**THE SWS WEBSITE IS BEING UPDATED SO PAY ATTENTION TO YOUR EMAILS AND NEWSLETTER FOR THE LATEST INFO!**



OCTOBER 30, 2024 • page 4

# Brushstrokes

## October Demo Notes



### Matthew White, an acclaimed

watercolor artist from Kansas City, treated us to his "Painting Morning Light" demo via Zoom. His method of narrating over the pre-recorded painting video worked very well, and allowed him time to stop and start in order to focus on members' questions. He takes reference photos, while out and about, of many things that capture his interest.

Matt starts with a line drawing, and wets both sides of the paper in order to give him enough time to complete his first wash. He concentrates on defining light from dark, and creating enough contrast to make the bright areas of the sky glow. He uses warm vibrant colors (Cad Yellow, Raw Sienna, Quinacridone Gold and Cad Orange) so the brights stay bright as he paints the cooler areas of the sky with Cobalt Blue, Lavender and Cerulean. It is important to use a transitional color like Lavender, Neutral Tint or Rose Madder to prevent the yellows and blues from mixing in the wash. He lets this first wash dry completely before moving on to the subsequent ones, adding more darks and details as he builds up the painting.

He uses an 18 Escoda brush, and finds synthetic brushes often hold less water, making it easier to control the washes. Matt emphasized that one doesn't always need expensive brushes, and prefers to use those that come to a sharp point to allow wet work as well as detail work.

Some of Matt's very helpful Techniques and Tricks are:

- Work left to right to avoid smearing the wet areas
- Stand back from your work often because we get too close to our paintings, and can easily overdo the detail work
- Detail the objects in foreground as that defines the same objects in background as recognizable with far less detail
- Connect the value levels as shapes which makes it easier to lay in each value range in your washes
- Directional lines are important as they lead the viewer into the painting
- Vertical lines are easier to paint using a horizontal position, and practice your strokes on scrap paper to eliminate fatal mistakes

Matt has two websites...[www.learntopaintwatercolor.com](http://www.learntopaintwatercolor.com) (Painting Instruction) and [www.mwhiteart.com](http://www.mwhiteart.com) (Fine Art Collection) as well as a Youtube channel.

IF YOU MISSED HIS DEMO, YOU CAN STILL WATCH IT ON THE SWS WEBSITE AT [www.spokanewatercolor.org](http://www.spokanewatercolor.org) in "MY SWS".

**Thank you Matt—we all learned so much!**

