

Brushstrokes

CALENDAR OF EVENTS

- April 5** *Happy, Easter!*
- April 8** Deliver accepted paintings to The MAC for National Show, Gilkey Room, (main building) 2316 W. 1st Ave., Spokane, Wednesday, 10-11:30 am
- April 9-11** **SWS National Workshop with David R. Smith, at Spokane Art Supply, 1303 N. Monroe, Spokane—9:30-4:30—ONLY 2 SPOTS REMAINING!**
- April 13** Deadline for submission of work by invited artists for the Leadership Exhibit in June at Liberty Gallery
- April 15** Men's Breakfast, Molly's Café, 224 S. Lincoln Street, Spokane, WEDNESDAY, 9:00 a.m.
- May 8** **SWS National Show opens at The MAC, Helen South Alexander Gallery, 2316 W. 1st Ave., Spokane, 10-5 (closed Mondays) runs through June 14**
- May 13** Men's Breakfast, Molly's Café, 224 S. Lincoln Street, Spokane, WEDNESDAY, 9:00 a.m.
- May 16** **SWS National Show Awards Reception at The MAC, Helen South Alexander Gallery, 2316 W. 1st Ave., Spokane, Saturday 10:30-12:00**
- May 23** Plein Air Event at Carrie's, Saturday 10:00-3:00, 20311 N. Little Spokane Drive, Colbert, WA, details on website and in next month's *Brushstrokes*
- May 26** *Memorial Day*
- May 31** **Painting Drop-off for SWS Leadership Show, LIBERTY GALLERY (upstairs at Aunt's Book Shop), 203 N. Washington, Spokane, SUNDAY 9-11 a.m. (parking is free on Sundays)**
SHOW OPENS (after hanging) on May 31 and runs thru June 26
Sunday-Thursday 9-7, Friday-Saturday 9-9 **DETAILS on pg. 3**

Challenge
PAINTING
APRIL
Value

(or what's on your easel)
SUBJECT OF YOUR CHOICE

SEE PG. 2
FOR TIPS ON
APRIL CHALLENGE!

Being a docent
is fun and easy!

You will be seated at a table near the gallery entrance, with **all the necessary information at your fingertips.** It is a great way to see the public's reaction to our show firsthand! You will also have ample opportunity to view the paintings in detail at your leisure.

You may even have time to work on some art when you are not busy. **Shifts are from 10:00 to 1:30 or 1:30-5:00.** You may bring snacks or beverages with you. **The MAC is closed on Mondays.**

SWS National Show

AWARDS RECEPTION

Saturday, May 16—10:30 to Noon
Helen South Alexander Gallery, at The MAC

Over \$1500 in awards will be presented to the winning artists as well as a pre-recorded critique by juror David R. Smith. Mark your calendars and plan to attend! The MAC also requires SWS docents at our show so **PLEASE SIGN UP FOR DOCENT DUTY, from May 8 to June 14. SEE PAGE 3 FOR SIGN-UP DETAILS.**





APRIL 2026 • page 2

APRIL Challenge Tips

By Susan Schmidt

VALUE in art refers to how light or dark a color appears. It is **essential for creating the illusion of light, shadow, depth, and volume in an artwork.** Every color has an inherent value that fits along a scale from white (lightest) to black (darkest), regardless of hue or saturation. Understanding value helps strengthen composition and mood within a painting.

ACTIVITY SUGGESTIONS

- Draw and paint a **VALUE SCALE** that is black and white, then one using color. If you want to make your own value scale, it's very easy! All you have to do is draw 9 equal boxes in a row. Then paint or draw one end with black and either leave the other end blank, for white or paint it with white. Value 5, in the middle is your mid tone, so mix the black and white in equal measures to create this value. Next fill in the intermediate values, start with 2 and work your way up to 8, increasing the darkness for each step of the scale.



Did you know that SWS has a **public Facebook and Instagram page** now? Please follow us and share our posts with your friends.

INSTAGRAM [spokane_watercolor_society](https://www.instagram.com/spokane_watercolor_society)
FACEBOOK Spokane Watercolor Society

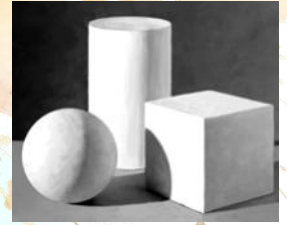
MEMBERSHIP CORNER

SWS NEW WEBSITE

Thanks to the tireless efforts of the AD-HOC Committee, they found an individual to renovate and streamline our website to make it more functional in a user-friendly format. **Please see page 3 for procedures** to help us learn and navigate through the new format.



- **VALUE STUDY**—make a small painting using only tonal values of black and white, or with one or two hues.



- Take a photo of a painting you have done and apply a black and white filter. On an iPhone, the filter may be listed as mono, silvertone, or noir. What do you notice about areas of light and shadow? Do they make sense with what you are trying to express in terms of light, depth, or mood in your painting?

Sources:

<https://finearttutorials.com/guide/value-in-art/>

<https://www.learntopaintpodcast.com/blog/no-math-required-using-color-perspective-to-add-depth-to>



Lush Landscapes in Watercolor with Lyudmila Clark

PLEASE NOTE....there will be no in-person meeting in April due to the SWS National Workshop with David R. Smith. April's Challenge will be reviewed later—stay tuned for details. But feel free to upload them when they are finished.

This will ensure that clean images of your work will be presented on the website, and newsletter.

Please see pg. 3 for uploading instructions.

WELCOME NEW MEMBERS!

Karen White, Spokane, WA
Brenda O'Quin, Liberty Lake, WA



YOUR PRIVACY IS IMPORTANT to Spokane Watercolor Society!

Your contact information is included in our roster, so that members can contact each other. This is only accessible by logging on to www.spokanewatercolor.org with your user name and password, under the heading "MY Account". If you DO NOT want your contact information on this roster, please contact: vpres@spokanewatercolor.org.



Website Tips with Carrie

www.spokanewatercolor.org

SIGNING UP FOR DOCENT DUTY

HERE ARE THE STEPS INVOLVED:

- Log on to www.spokanewatercolor.org AND log in to your account
- Scroll down to the **SWS Exhibits & Events** section
- Click on **National Show Docent Sign Up**
- **Scroll down** to see the times and dates that are not filled. There are two shifts per day (10:00-1:30 & 1:30-5:00). **Click on the time** you desire.
- Click on **Sign up on Selected Dates**—you will be asked to enter your name and e-mail
- Click on **Save and Continue**
- **Review** and **add any comments** you wish in the box
- Click on **SUBMIT**
- A **confirmation** will appear & is sent to your e-mail
- If you need to **CHANGE OR CANCEL** your time, click on the **Change my Sign Up** button which appears after you click on "Nat Show Docent Sign Up"
- If you have any problems, please contact the Web Manager or Valerie Woelk (Docent Coordinator)

UPDATING YOUR ARTIST PAGE

- Log on to www.spokanewatercolor.org AND log in to your account
- Scroll down to the **Edits & Opportunities** section
- Click on **Update My Artist Page**
(You can update your profile picture, name, contact information, Bio, Artist Statement, and add or delete painting images)
- You will be prompted to fill in each of the options and/or upload the files (4 mb max. size)
- After each section, click on **NEXT STEP** or **SKIP** if you did not change the information
- You can have a total of 10 paintings on your page. Follow the prompts and click **Add Another Painting** if you upload more than one
- If you wish to **remove paintings** or **have a request**, please indicate that in the **Comments** box. Carrie will be updating your page based on the information you have provided
- Once you finish, click on **Complete My Profile**



SWS LEADERSHIP EXHIBIT

(by invitation only)

at **Liberty Gallery**

203 N. Washington, Spokane, WA
Sun-Thurs 9-7, Fri-Sat 9-9

May 31 thru June 26, 2026

FIRST FRIDAY Reception

June 5, 2026

5:00-7:00 pm

(art, music & hor d'oeuvres)



Come and support your
hardworking volunteers!

Valerie W. is chairing this show and can be
reached at sigldrshow@spokanewatercolor.org

SWS MEMBER BIOS/ ARTIST STATEMENTS

If you have been accepted into the SWS National Show, or have been invited to the SWS Leadership Show, **your bios and artist statements are required along with a jpeg headshot image.** If you would like to use the bio we have on file (used in 2025 or earlier), please let Trish T. know at news@spokanewatercolor.org; or, if you are dropping a painting off on April 8 at The MAC, please let Tom or Trish know there. **NOTE: Your painting image will appear on the reverse side of your bio, so if you would like to add a few lines about your painting, please email it to the address above.**

HOW TO UPLOAD CHALLENGES

Please bring your Challenge Paintings to in-person meetings, but also we request you upload them so that we have clean images to use on the website and newsletter. **Please upload by the Thursday before the general meeting.**

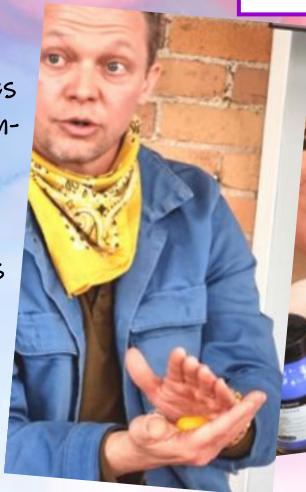
- Log in to your account at www.spokanewatercolor.org
- Hit the **My Account Button** on the right of Menu
- Scroll down to the **"Meetings and Programs"** section
- Click on **"View and Submit Current Challenge"** (images should be clean and cropped to show the painting only), **FORMAT** should be in **JPEG or PNG, maximum size of 4 mb**
- Type in the requested information with the uploaded photos and click **"Submit"**

MARCH DEMO NOTES

Benny Fountain, an associate professor at Whitworth University, grew up in the Palouse area, was away for a few decades, returning in summers to paint. He spent time in Tuscany and France to study two of his inspirational painters—Piero della Francesca and Paul Cezanne. He studied to understand how Piero connects everything together

in a compositional “dance” and how Cezanne interpreted landscape space instead of painting it literally. These insights became one of Benny’s mantras—portraying the “literary” vs. the “literal” in his paintings. Benny returned to the Palouse with his family and has a painting shack on the top of Farm-land Hill where he produces very large paintings of the landscape with simple, earthy colors, from paints he makes from pure pigments. These natural pigments have been used since art began and have always fascinated him. These colors include Burnt Sienna, Yellow Ochre, Ultramarine (Lapus Lazuli), Chromium Oxide Green (Malachite), etc. Refined pigments are mixed with a binder—linseed oil for oil paints, egg yolk (without the skin) for egg tempera, and gum arabic (with honey and clove oil) for watercolors. The invention of the aluminum tube made it possible for artists to bring these paints out of door more easily. Benny also uses lavender and citrus oils in his painting as a non-toxic alternative to turpentine. We were all

rapt as he showed us the process of mixing these pigments and the beautiful pure colors that resulted.



NEW EMAILS LIST

As mentioned in previous meetings, we have new email addresses in Google Workspace. **Please use these emails to contact individuals in charge of SWS concerns.** This helps us eliminate having to use personal emails for SWS business, and allows different people to fill roles seamlessly. **We will be highlighting** more specifics in the future as to which emails to use for specific questions/subject areas.

EMAIL ADDRESS	PERSON IN POSITION
president@spokanewatercolor.org	Kim G.
vpres@spokanewatercolor.org	Terese F.
sec@spokanewatercolor.org	Tom B.
treas@spokanewatercolor.org	Sarah K.
news@spokanewatercolor.org	Trish T.
support@spokanewatercolor.org	Valerie W.
hospitality@spokanewatercolor.org	Sue R.
programs@spokanewatercolor.org	Kathi E.
tech@spokanewatercolor.org	Margo S.

BOARD & OFFICERS

adhoc@spokanewatercolor.org	Lori D.
membershow@spokanewatercolor.org	Shel H.
nationalshow@spokanewatercolor.org	Tom B.
sigldrshow@spokanewatercolor.org	Valerie W.
social@spokanewatercolor.org	Carrie D.
sponsormanager@spokanewatercolor.org	Joy G./Bill O.
webmanager@spokanewatercolor.org	Carrie D.
workshop@spokanewatercolor.org	Margo S.



Thank you Benny—
 what an interesting demo!





March Meeting Highlights



After socializing with fellow members and loading our plates with lots of goodies, the meeting was called to order. Carrie showed members how to register for the workshop and find the discount code, how to sign up for docent duty and how to update your artist page. Lori stated that chairs are needed for 2028 events. Margo gave an update on the workshop. David R. Smith uses a lot of water in his painting and info for registrants will go out soon. Craig from SAS thanked us for their annual gift from SWS for our deep appreciation for all they do for us. Sue R. gave us an update on the Centerplace exhibit which will change on March 30 and several SWS artists will be participating. Tom reminded us that painting drop off for the National Show will be April 8, 10-11:30 downstairs in the Main Building at The MAC—Gilkey Room. Let them know at the front door that you are dropping off a painting and you will be admitted without charge. Susan S. led the Challenge Painting discussion featuring PERSPECTIVE. Sherri T. won the \$15 Spokane Art Supply gift certificate. We took a short break followed by Benny Fountain's presentation.

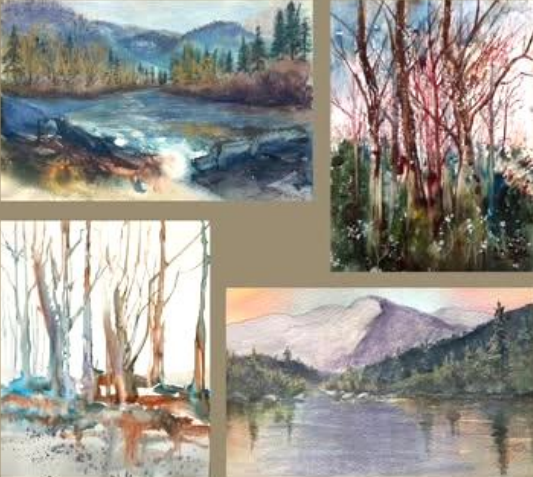
March Challenges



To see ALL of the March Challenge Paintings, visit the website under "My Account" then "Meetings + Programs"



The Best Of Us!



Gail Johannes & Margo Sety

Trails End Gallery April 8th-May 30th 2026

Show opens Wed April 8th 5-8pm

Trails End Gallery 204 E Main Ave Chewelah, WA 99109

trailsendgallery@yahoo.com (509) 936-9181

Show opens on April 8, 5-8 pm.

Gail Johannes and Margo Sety will host an Artists' Talk on Wednesday, May 6 at 6:30 p.m. at Quarzite Brewing

They will also present their art at the First Thursday Artwalk at the Trails End Gallery on May 7 from 5:00 p.m. to 8:00 p.m.

Contact Margo Sety if you have questions:
509.675.0789

margosety@centurytel.net

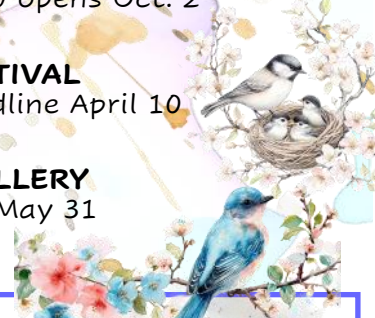


CHECK THESE OUT...

WATERMEDIA 2026 NATIONAL SHOW/Juror Stan Miller
Deadline June 2, Kalispell, MT, Show opens Oct. 2
montanawatercolorssociety.org

FOREST TO FRAME PLEIN AIR FESTIVAL
Finch Arboretum May 16, 10-4 Deadline April 10
spokaneartschool.net/foresttoframe

2026 BLOCK PARTY —EMERGE GALLERY
July 10, Coeur d'Alene, ID Deadline May 31
emergecda.com



BIRDING & WATERCOLOR Mt. Spokane State Park Saturday, June 27, 9:30-3:30

Join Carrie Dugovic and volunteers from the Spokane Watercolor Society and Spokane Audubon Society at Mt. Spokane State Park. Participants will learn about the Friends of Mount Spokane State Park activities, take a short walk to discover birds in the park and learn about painting with watercolor. This is a beginning course and no experience is required. Participants will take home an all-season Mt. Spokane State Park map, your own painting of a bird, a mini-palette, a watercolor brush and paper to continue your watercolor journey.

Meet at Yoke's Fresh Market, Mead, Parking Lot,
14202 N. Market St., Mead, WA
\$75 (ages 18 and up)

<https://my.spokanecity.org/parksrec/guides/>
View the guide—go to page 29 to register



Several SWS artists currently have their work on display at Centerplace, now thru May 18! Check it out!

CENTERPLACE EVENT CENTER

2426 N. Discovery Place, Spokane Valley, WA

For more information and to claim your space, please contact:

Sue Rohrback, Exhibit Coordinator
(509) 990-8441; suerohrback@hotmail.com

2026 UPCOMING SHOW DATES

July 13 (Monday setup 1-3)—September 21 (Monday takedown 1-3)

EXCLUSIVE SPOKANE WATERCOLOR SOCIETY SHOW
Sept. 21 (Monday setup 1-3)—Nov. 9 (Monday takedown 10-12)