

* Somos Esencia

A piece of us



@tierrabrava.es
Carrer de Casanova, 133,
08036 Barcelona
+34 931 31 15 50



@barbauma.es
Carrer de Roger de Llúria, 124
08037 Barcelona
+34 932 07 54 31



@brisapaludemar
Plaça de Pau Vila, 1
08039 Barcelona
+34 932 24 04 07



@aguarestaurantebcn
Pg. Maritim de la Barceloneta, 30
08003 Barcelona
+34 932 25 12 72





INTRODUCTION

Somos Esencia is the result of the passion of a gastronomic family, with over 30 years of experience in the sector, to create a more human and emotional concept based on the quality and spirit of Barcelona.

Currently, the group has four emblematic restaurants: **Tierra Brava, Brisa Palau de Mar, Bar Bauma** and **Agua**.

Together with an exceptional team, **Somos Esencia** offers a unique culinary experience, highlighting the essence of the city and connecting with its guests through hospitality.

The goal of **Somos Esencia** is to become a gastronomic benchmark, conveying the passion and warmth of doing things well as one great family.

We are the mediterranean **Breeze**, and we come
from the wildest **Land**. We are the **Water** of life and the gatherings
of **Bauma**.

We are Barcelona. We are Somos Esencia.



The image shows the interior of the Tierra Brava restaurant. The space is characterized by extensive wood paneling on the walls and ceiling. A long, light-colored bar counter is the central focus, with several wooden bar stools lined up in front of it. On the bar, there are baskets of bread and other food items. Above the bar, a decorative hanging light fixture with multiple white, teardrop-shaped shades is illuminated. In the background, a kitchen area is visible, and the overall atmosphere is warm and rustic. The text 'TIERRA BRAVA' is overlaid in large, white, serif capital letters across the middle of the image.

TIERRA BRAVA

Welcome to Tierra Brava. Market-fresh, high-quality gastronomy in the heart of Barcelona. Located inside the Mercat del Ninot, Tierra invites you to enjoy a bold atmosphere of tapas and small plates, along with a refined signature cocktail selection.

GASTRONOMIC OFFERINGS





OUR SPACES

CAPACITIES

BANQUET STYLE

Interior:	90
Entrance:	30
Bar:	12
Whole Restaurant::	130

COCKTAIL STYLE

Whole Restaurant: 220

SERVICES



Parking from Tuesday to Saturday until 9:00 PM



Wi-Fi



Showcooking

OPENING HOURS

Closed on monday

Tuesday and Wednesday 1:00 pm to 1:00 am

Thursday to Saturday 1:00 PM to 2:00 AM

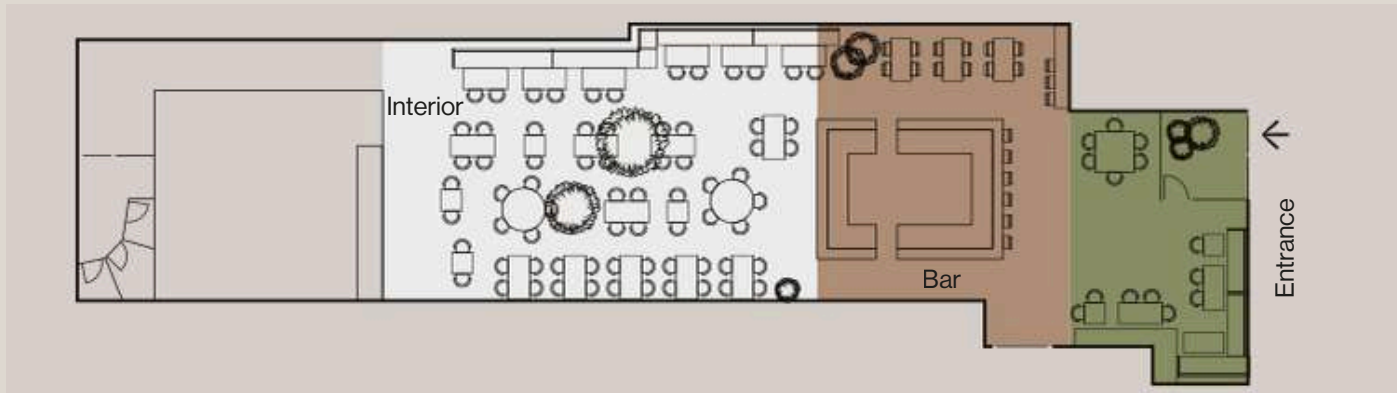
Sunday 1:00 PM to 5:00 PM

(+34) 931 311 550
@tierrabrava.es | @somoesenencia.es

Calle Casanova 133,
08036, Barcelona



LAYOUT



The image shows the interior of Bar Bauma, a restaurant with a warm, rustic aesthetic. The walls are covered in vertical wood paneling. A long, dark blue sofa runs along the back wall, with several wooden tables and chairs arranged in front of it. In the foreground, there are more wooden tables and chairs, including a round white table. A framed black and white portrait of a man with a headband is mounted on the wall. The lighting is soft, with yellow conical pendant lamps hanging from the ceiling. The text 'BAR BAUMA' is overlaid in large, white, serif font in the center of the image.

BAR BAUMA

Bar Bauma has been a space for writers, locals, and anyone who wants to enjoy its classic essence. The tradition of this bar-restaurant dates back over 50 years. It has been renovated with the aim of bringing life back to one of the city's most iconic corners, right in front of La Casa de les Punxes.

GASTRONOMIC OFFERINGS





OUR SPACES

CAPACITIES

BANQUET STYLE

Interior:	60
Terrace:	48
Whole restaurant:	108

COCKTAIL STYLE

Whole restaurant:	100
--------------------------	-----

SERVICES



Breakfast service



Semi-covered terrace



Wi-Fi

OPENING HOURS

Sunday to Thursday 9:00 AM to 12:00 AM

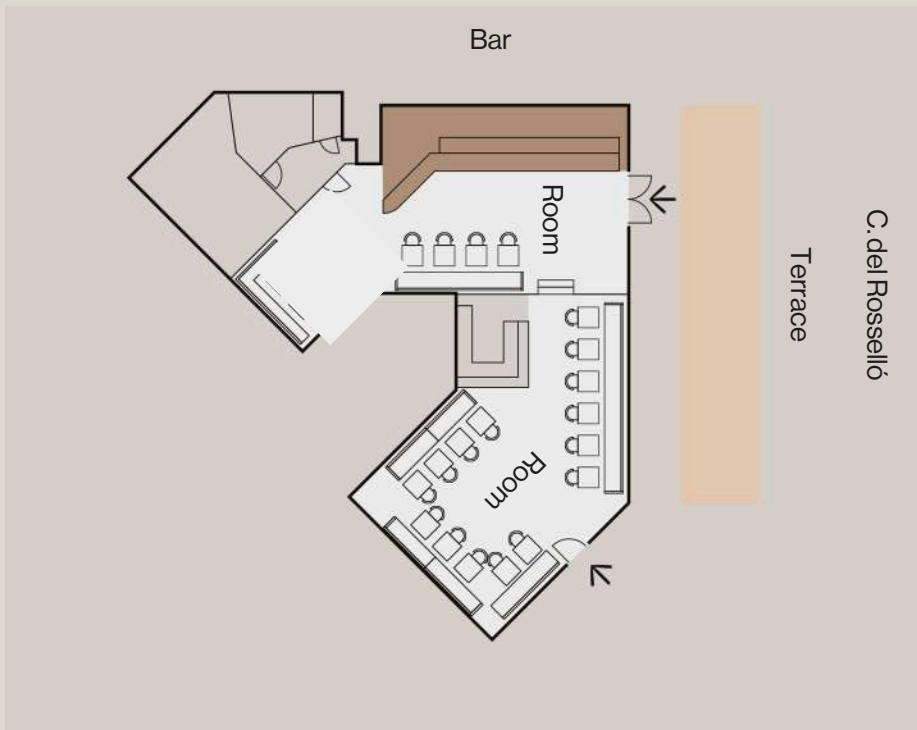
Friday to Saturday 9:00 AM to 1:00 AM

(+34) 932 075 431
@barbauma.es | @somesencia.es

Carrer de Roger Llúria, 124
08037, Barcelona



LAYOUT





Brisa

Brisa

This restaurant is the soul of the port, offering exquisite bites with the purest taste of Barcelona. It stands out as an intimate and relaxed atmosphere, ideal for meals and events. A large terrace with shade and greenery welcomes diners seeking an authentic Barcelona experience by the Mediterranean.

GASTRONOMIC OFFERINGS





CAPACITIES

BANQUET STYLE


Interior:	30
Terrace:	150
Terraza puerto:	60
Whole restaurant	200

COCKTAIL STYLE

Whole restaurant: 230

**Our terrace is covered in case of bad weather*

SERVICES

 Covered terrace

 Wi-Fi

 Showcooking

**Breakfast service from May to October*

OPENING HOURS

Monday to Thursday 11:00 AM to 11:00 PM

Friday to Saturday 11:00 AM to 1:00 AM

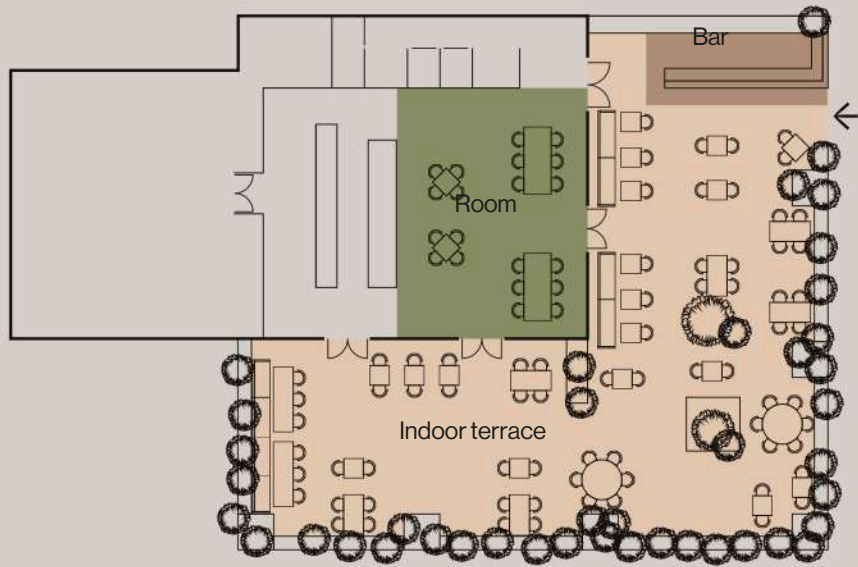
Sunday 11:00 AM to 12:00 AM

(+34) 931 311 549
@brisapalaudemar | @somesesencia.es

Plaça de Pau Vila, 1
08039, Barcelona

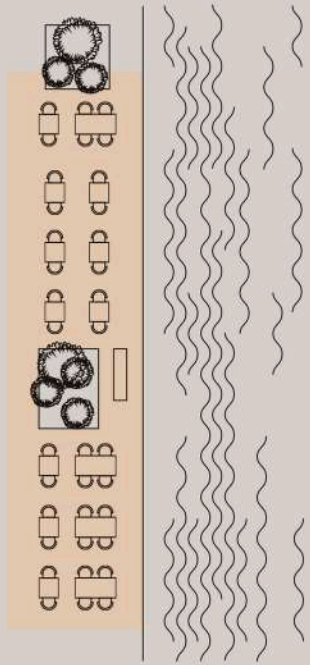


LAYOUT



← Av. Maritim →

Outdoor terrace





It is the connection between Barcelona and the Mediterranean thanks to its high-quality cuisine. Agua stands out as a welcoming space with a calm atmosphere, ideal for dining and relaxing, enjoying unique views and an unparalleled terrace in the city of Barcelona. A space that invites you to experience the essence of what makes us unique: our people and our sea.

GASTRONOMIC OFFERINGS





OUR SPACES

CAPACITIES

BANQUET STYLE

Interior:	130
Terrace:	90
Whole restaurant:	220


COCKTAIL STYLE


Interior:	200
Terrace:	100
Whole restaurant:	300

Our terrace is not covered in case of bad weather

SERVICES

 Semi-covered terrace

 Wi-Fi

 Showcooking

**Breakfast service from May to October*

OPENING HOURS

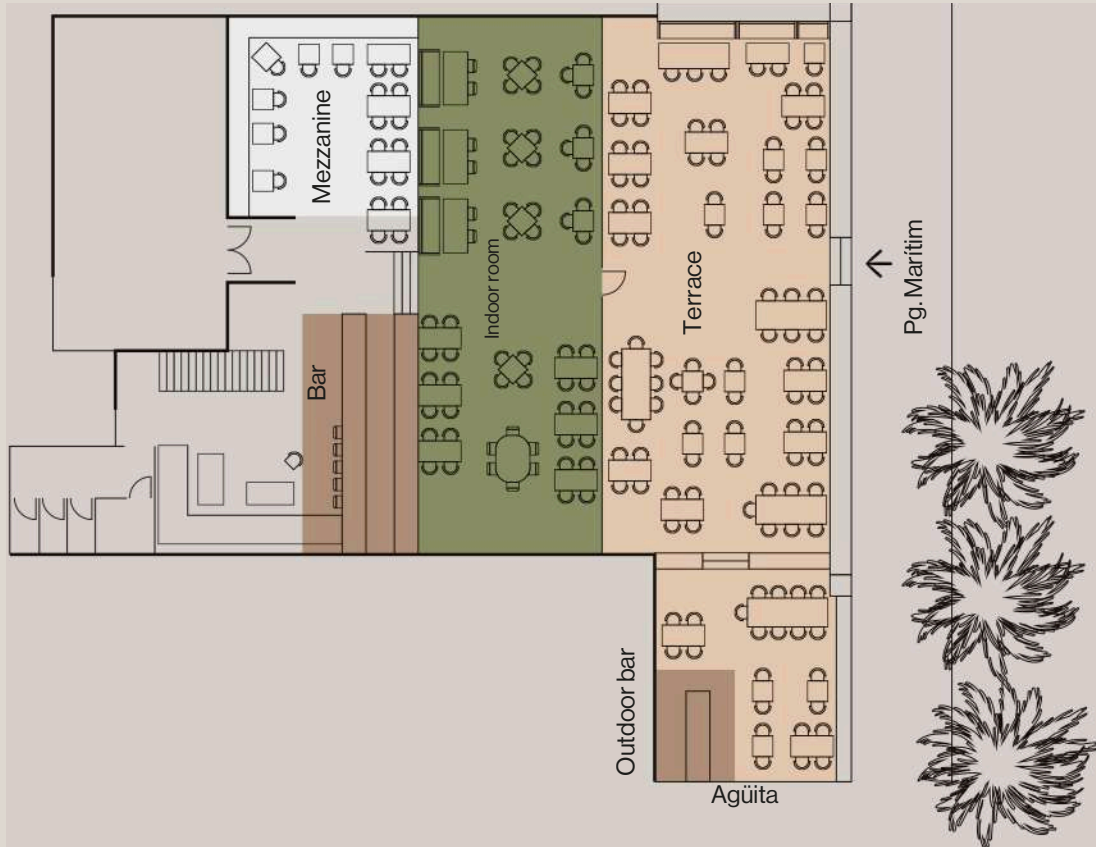
Monday to Sunday 10:00 AM to 1:00 AM

(+34) 932 251 272
@aguarestaurantebcn | @somoसेsencia.es

Pg. Marítim de la
Barceloneta, 30,
08003, Barcelona



LAYOUT



* **Somos Esencia**
Sabor a Hospitalidad.

CONTACT

+34 93 768 74 82

+34 648 510 144

eventos@somosesencia.es | somosesencia.es