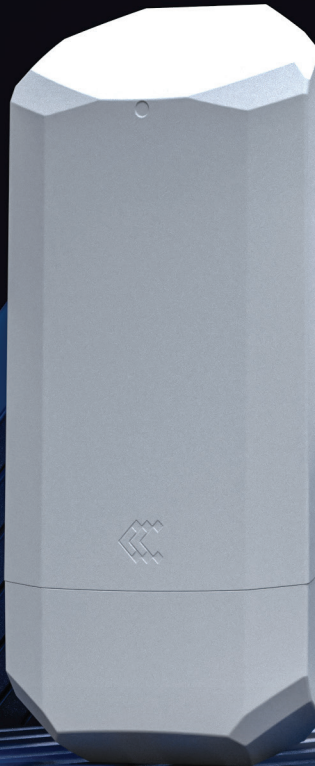


# OTD144

## OUTDOOR WI-FI ROUTER



OTD144 360° VIEW



The OTD144 was designed to bring reliable Wi-Fi to outdoor environments where robust networking is essential. Built for challenging conditions, it combines LTE Cat 4 connectivity with dual SIM auto failover, built-in Wi-Fi, and two Ethernet ports – one supporting PoE-in and the other PoE-out. Its rugged IP55 housing with an integrated mounting bracket ensures simple, secure installation in the field. Powered by RutOS and fully compatible with RMS, the OTD144 also provides secure VPN, firewall, hotspot, and remote management features for complete control anywhere.

### IP55

Outdoor LTE Cat 4 router with integrated Wi-Fi

### RUGGED DESIGN

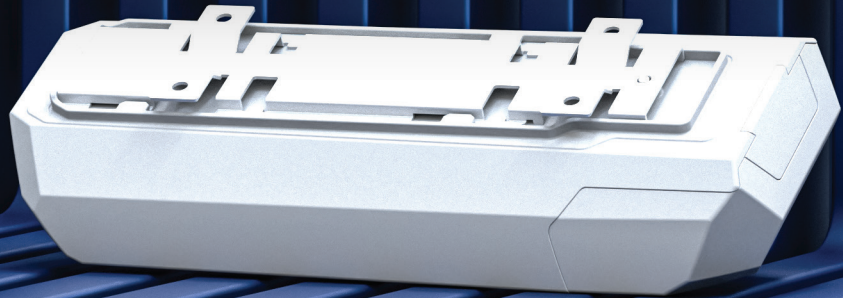
Weather-resistant build with IP55 rating

### EASY INSTALLATION

Single cable for power and data over PoE

### PROFESSIONAL MANAGEMENT

Built-in VPN, hotspot, and remote management



# RMS

## REMOTE MANAGEMENT SYSTEM

# COMPATIBLE WITH OTD144

MANAGEMENT

ALERTS

CONFIGURATION

ACCESS

FOTA

# KEY FEATURES

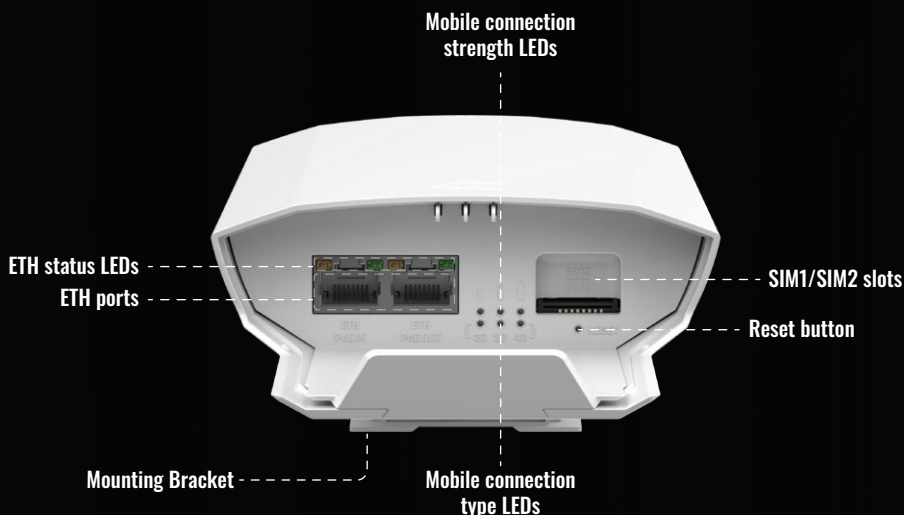
## HARDWARE

Mobile	4G (LTE) – LTE Cat 4 up to 150 DL/50 UL Mbps; 3G up to 21 DL/5.76 UL Mbps; 2G up to 236.8 DL/236.8 UL kbps
CPU	Mediatek, 580 MHz, MIPS 24KEc
RAM	64 MB, DDR2
Storage	16 MB
Powering options (PoE In)	RJ45, PoE In: 802.3af/at (42.5 – 57 VDC, max 21 W)
PoE Out	PoE Out: 802.3af/at (42.5 – 57 VDC, max 15 W - power supply unit dependent)
SIM	2 x SIM slots (Mini SIM - 2FF), 1.8 V/3 V
Antenna connectors	2 x Internal for Mobile, 2 x Internal for Wi-Fi
Ethernet	2 x RJ45 ports, 10/100 Mbps: 2 x ETH ports (can be configured as WAN)
Wi-Fi	802.11b/g/n (Wi-Fi 4), Access Point (AP), Station (STA)
Status LEDs	3 x Mobile connection type, 3 x Mobile connection strength, 4 x ETH status LEDs
Operating temperature	-40 °C to 70 °C
Housing	Plastic (PC+ASA)
Dimensions (W x H x D)	110 x 49.30 x 235 mm
Weight	315 g

## SOFTWARE

Operating system	RutOS (OpenWrt based Linux OS)
Mobile features	SIM switch, Status, SMS, USSD, Block/Allow list, Band management, SIM idle protection service, SIM PIN code management, APN, Bridge, Passthrough
Wireless features	Wi-Fi security, SSID/ESSID, Wi-Fi users, Wireless Connectivity Features, Wireless MAC filter, Wireless QR code generator, TravelMate
Network features	VoIP passthrough support, Connection monitoring, Firewall, Firewall status page, Ports management, Network topology, DHCP, QoS / Smart Queue Management (SQM), DNS over HTTPS, DDNS, Network backup, Load balancing, Hotspot, Hotspot 2.0, SSHFS, VRF support, Traffic Management, IGMP Proxy
Security	Authentication, Firewall, Attack prevention, VLAN, Mobile quota control, WEB filter, Access control, SSL certificate generation, 802.1x
VPN and tunneling	OpenVPN, OpenVPN Encryption, IPsec, GRE, PPTP, L2TP, Stunnel, DMVPN, SSTP, ZeroTier, WireGuard, Tinc
Monitoring and Management	WEB UI, FOTA, SSH, SMS, Call, Email, TR-069, MQTT, SNMP, JSON-RPC, RMS
Cloud solutions	RMS, ThingWorx, Cumulocity - Cloud of Things, Azure IoT Hub, AWS IoT Core
Services	BacNET, OPC UA, Modbus, Data to Server, Modbus MQTT GATEWAY, DNP3, DLMS/COSEM

## FRONT VIEW





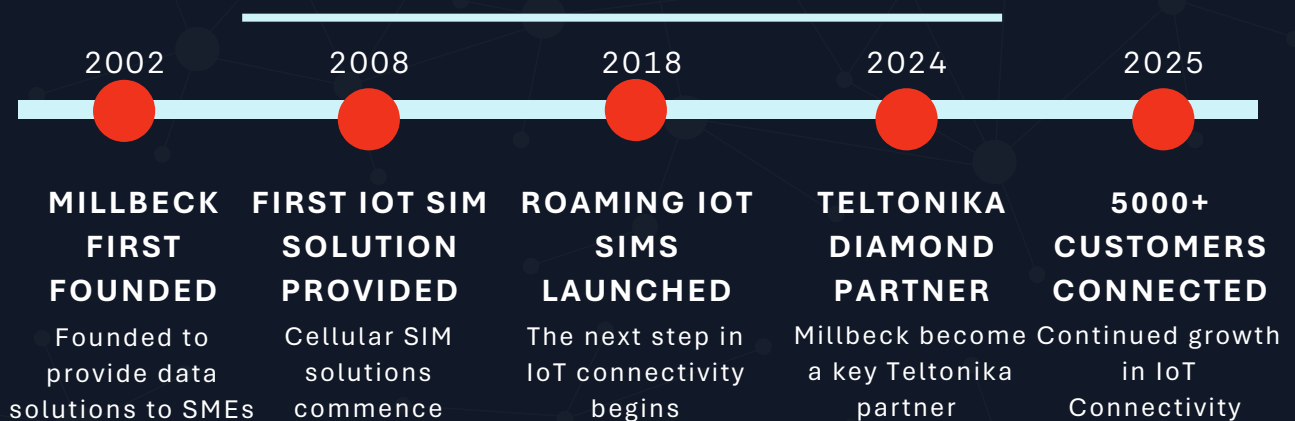
# Millbeck.

## ABOUT

Millbeck brings over 20 years of connectivity expertise, delivering smart, secure IoT solutions that scale seamlessly, from UK based projects to global deployments.

As a Teltonika Diamond Partner, we combine global IoT SIM coverage, industrial-grade hardware, and expert support to deliver scalable, future-ready systems tailored to your exact needs.

## TIMELINE



## EXPERTISE



## SIM TECHNOLOGIES

- 2G/3G, 4G LTE, 5G, CAT-M1, LTE-M, VoLTE & NB-IoT
- eUICC
- eSIM
- Fixed Public IP
- Fixed Private IP
- IPsec VPN
- SSL VPN



# Millbeck.

## Industry sectors we connect



Agriculture



Construction



BMS & Smart Cities



Energy & Utilities



Healthcare



EV Charging



Industrial IoT



Retail & Point of Sale



Security



Automotive & Logistics



# Millbeck.

## SIM & Hardware vendors



POYNTING

*DrayTek*





# Millbeck.

