

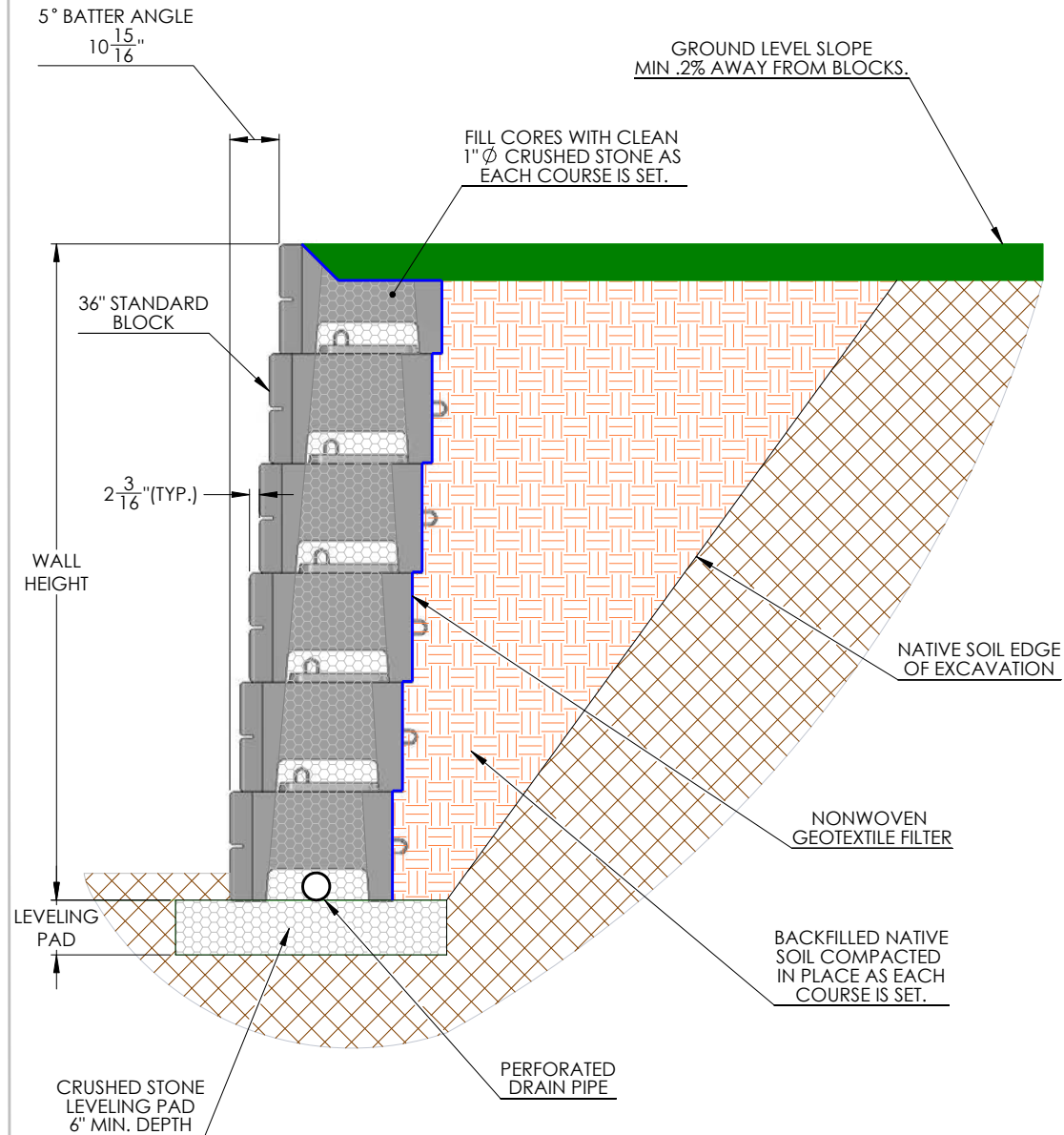
Design Manual: Construction Drawings

Section 5



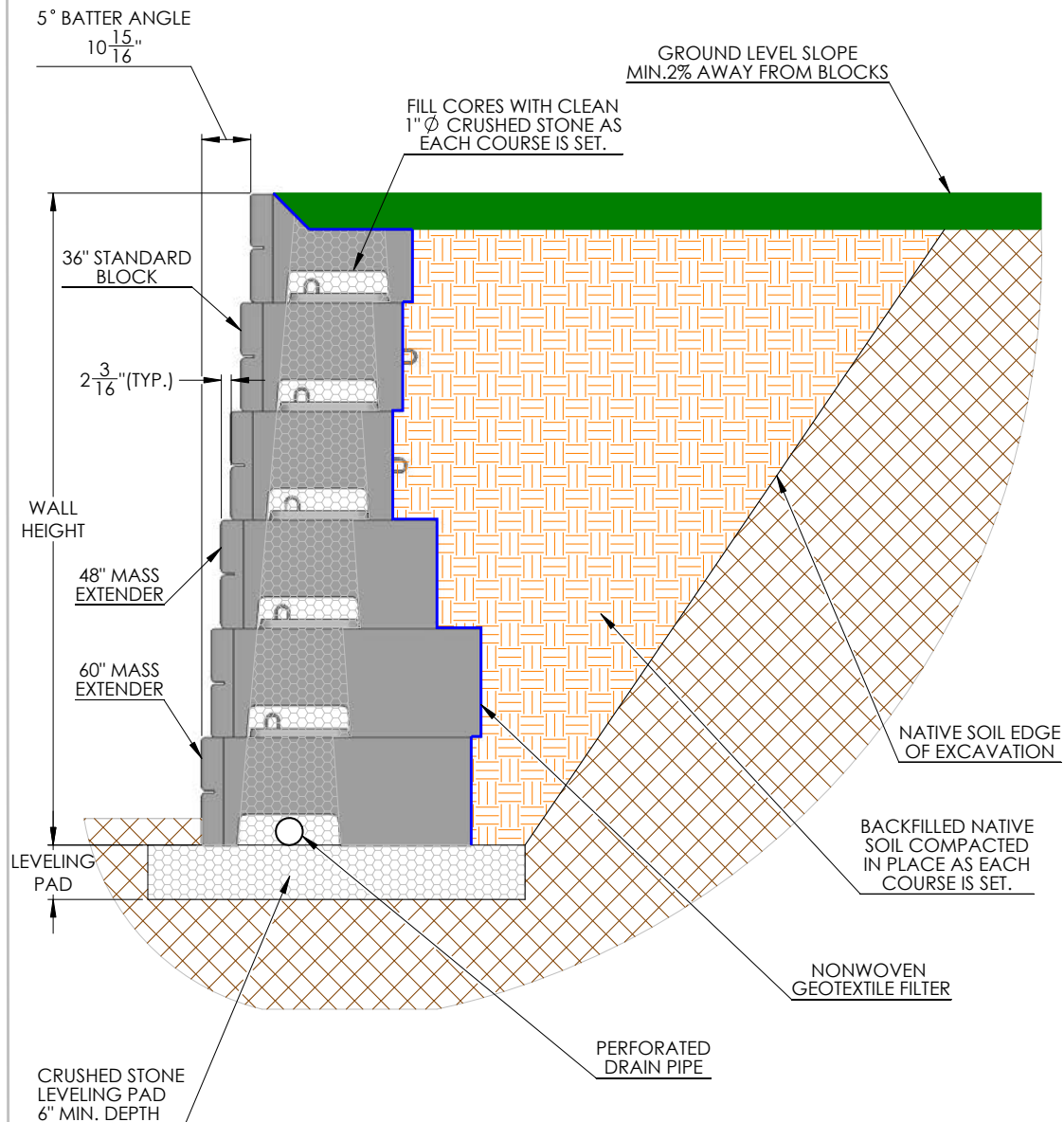
DIAMOND
PRECAST LOGISTICS

TYPICAL GRAVITY WALL WITH 36" VERTI-BLOCK



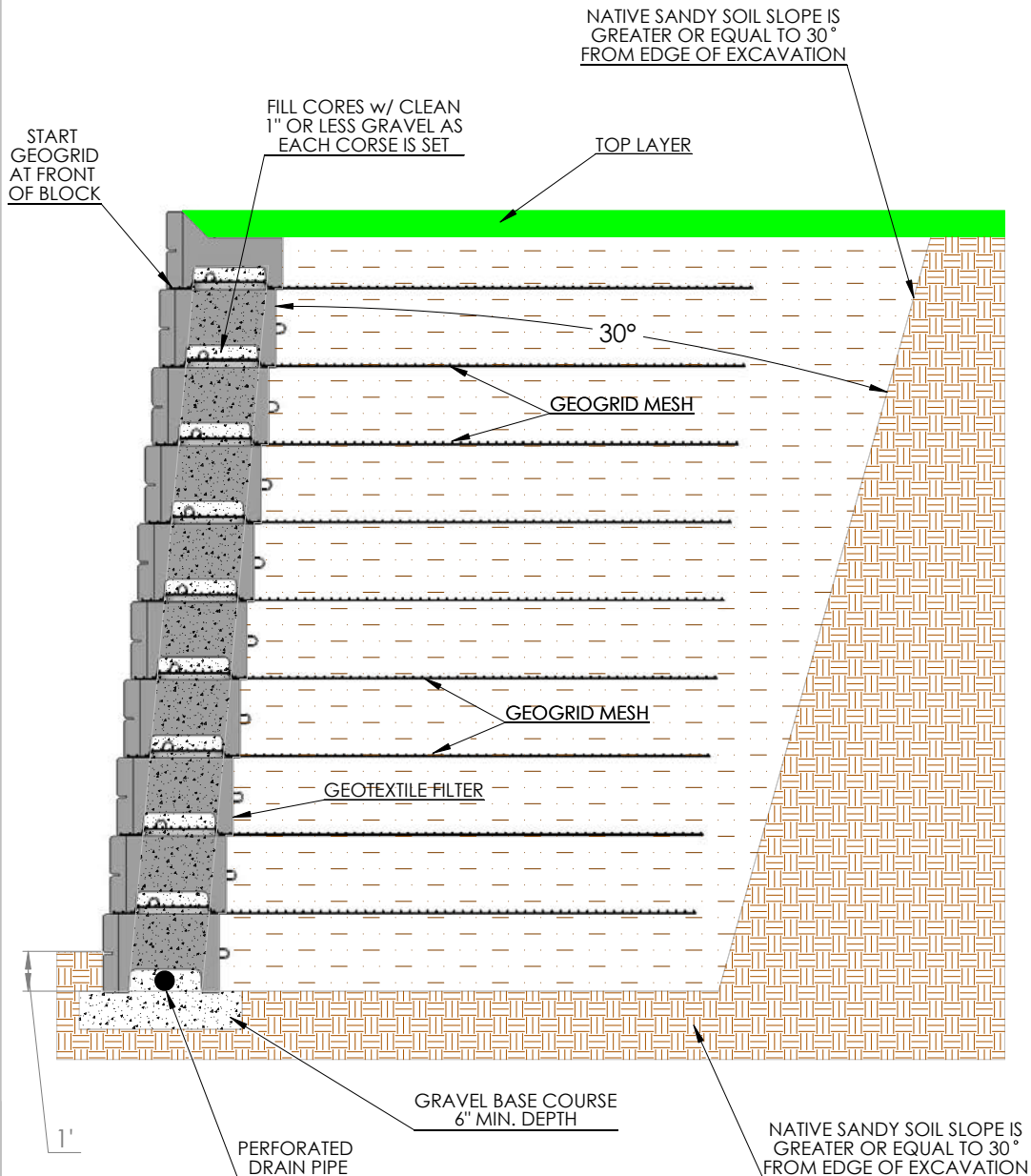
DRAWN BY	DATE	TITLE:
DAN BALLING	12/30/2013	12' RETAINING SECTION
16500 SOUTH 500 WEST BLUFFDALE, UTAH 84065 PHONE: (801) 571-2028		DWG NO.
		WD-14
SCALE: 1: 30		SHEET 1 OF 1

TYPICAL GRAVITY WALL WITH VERTI-BLOCK MASS EXTENDERS



DRAWN BY	DATE	TITLE:
DAN BALLING	12/30/2013	12' SECTION W/ MASS EXTENDERS
16500 SOUTH 500 WEST BLUFFDALE, UTAH 84065 PHONE: (801) 571-2028		DWG NO.
		WD-15
SCALE: 1: 30		SHEET 1 OF 1

20' GEOGRID FRICTION CONNECTION



DRAWN BY	DATE
DAN BALLING	12/12/2013
16500 SOUTH 500 WEST BLUFFDALE, UTAH 84065 PHONE: (801) 571-2028	

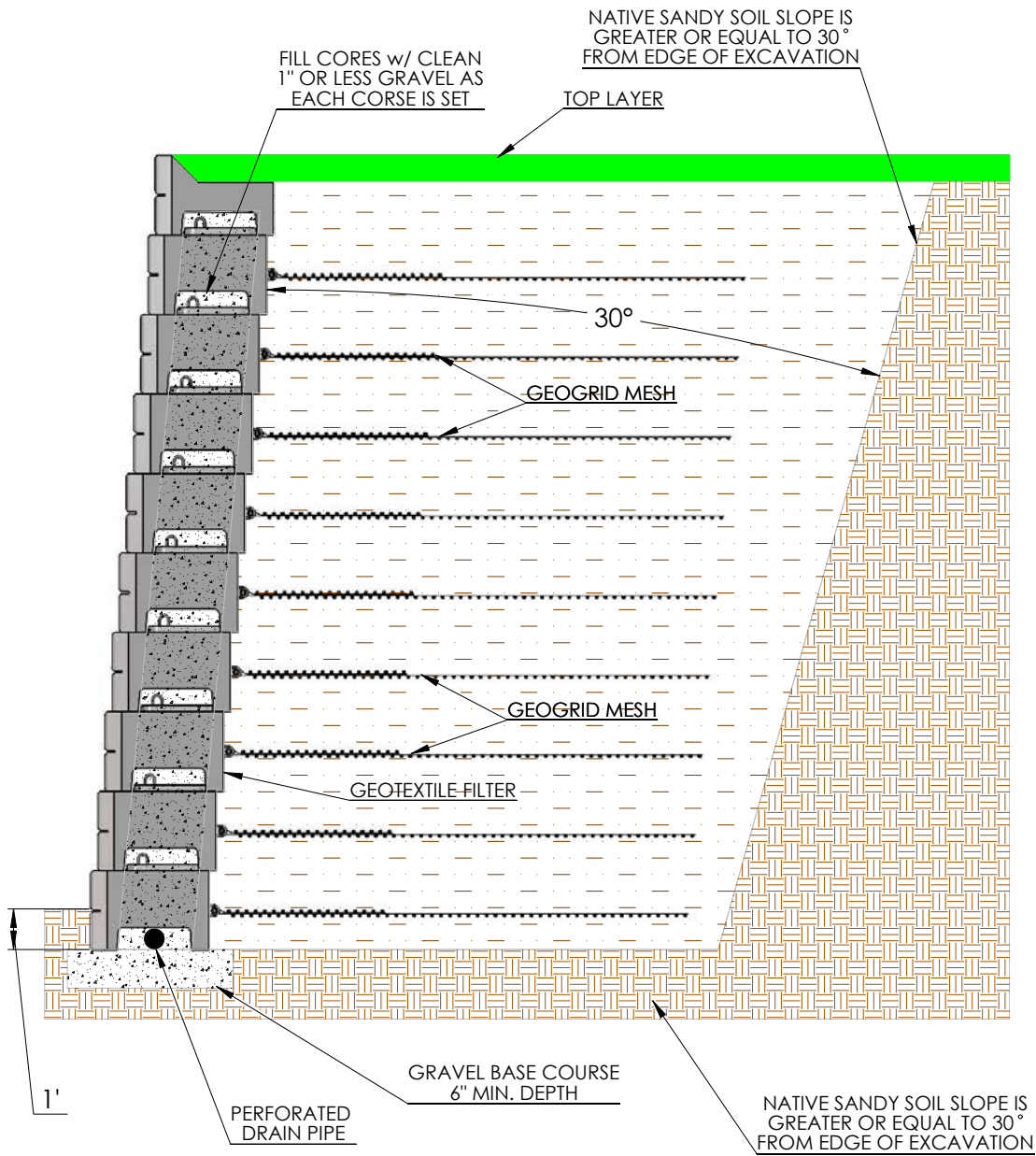
TITLE: 20' FRICTION DETAIL

DWG NO. M-03

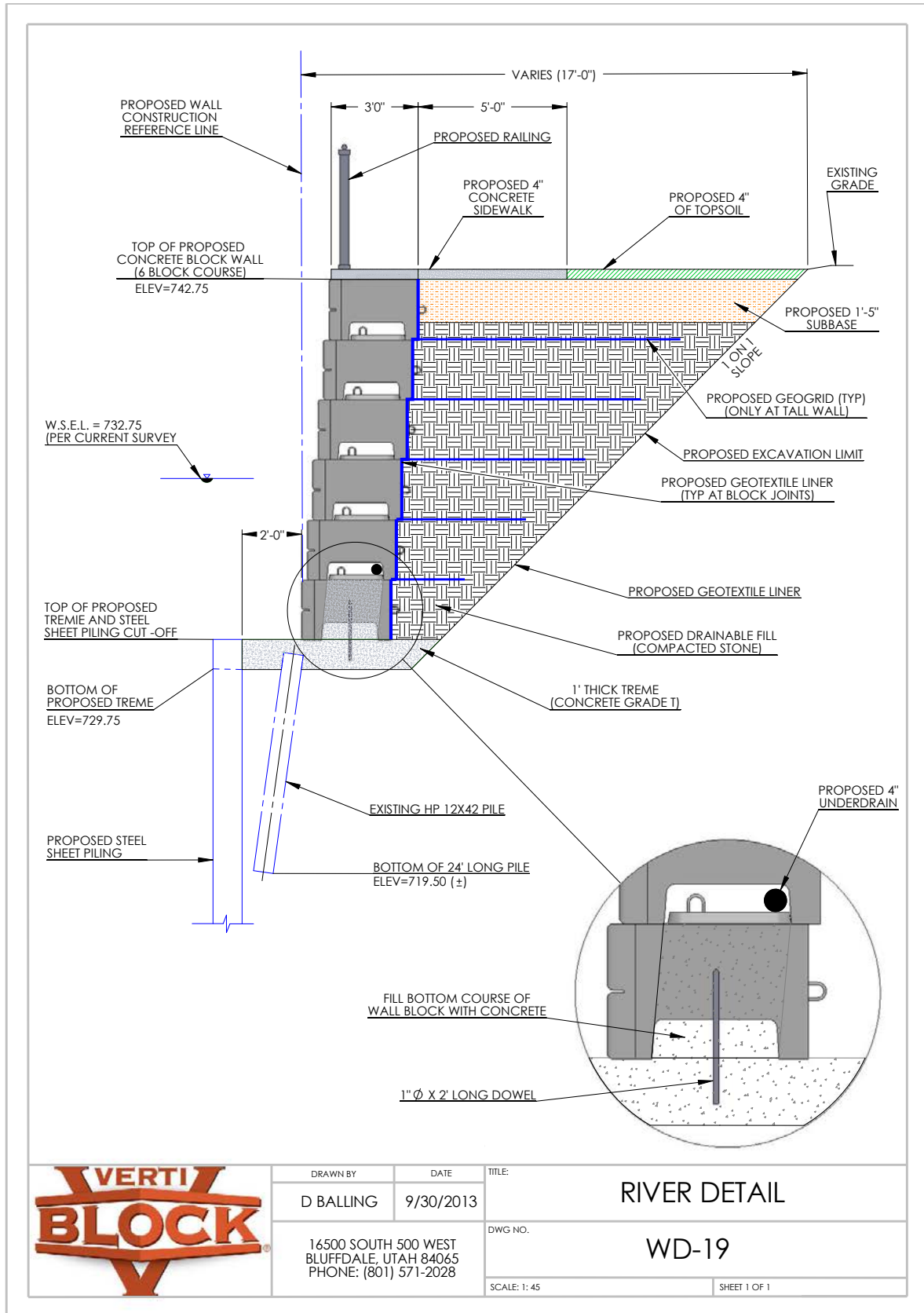
SCALE: 1: 42

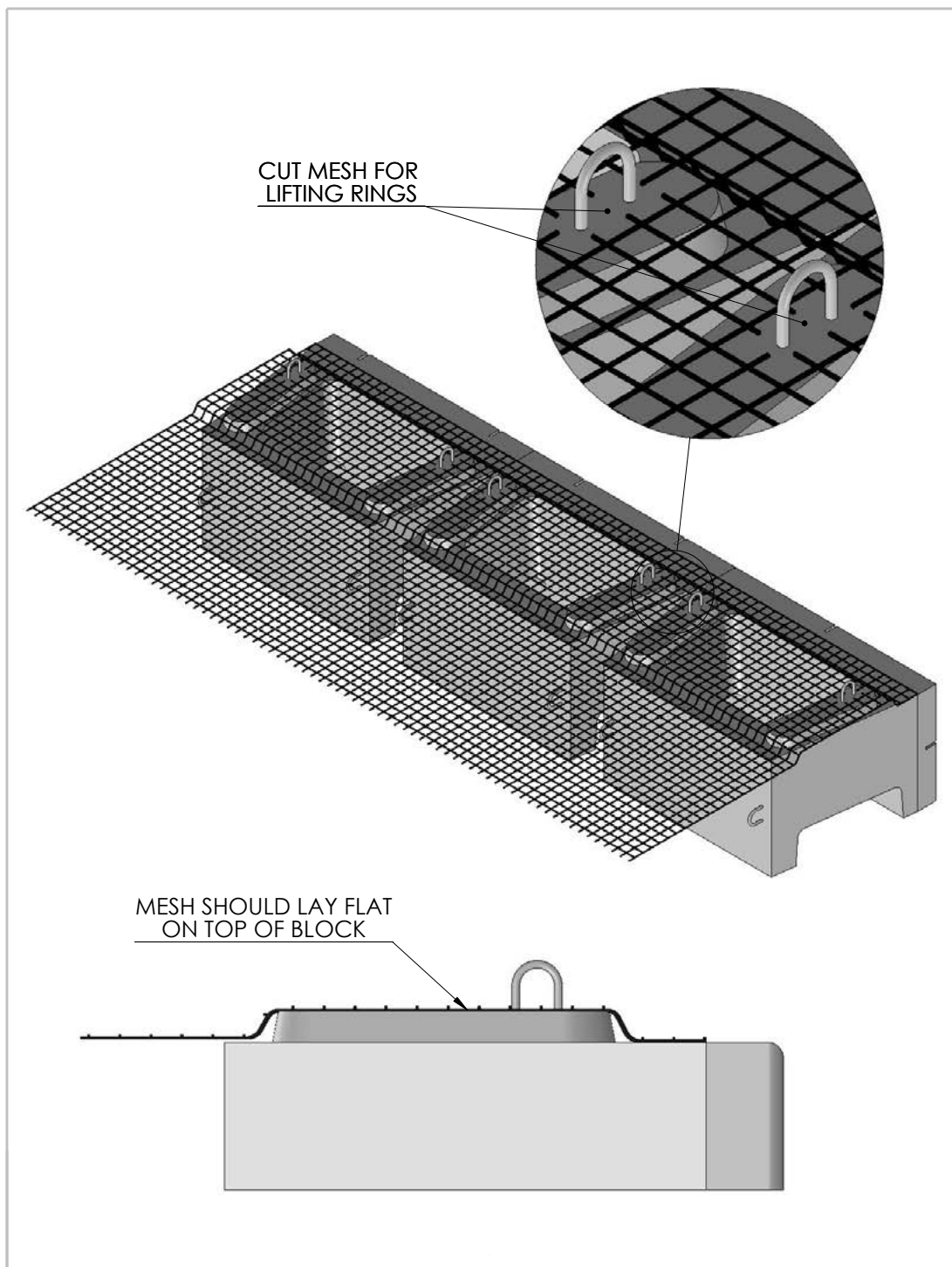
SHEET 1 OF 1

20' GEOGRID POSITIVE CONNECTION

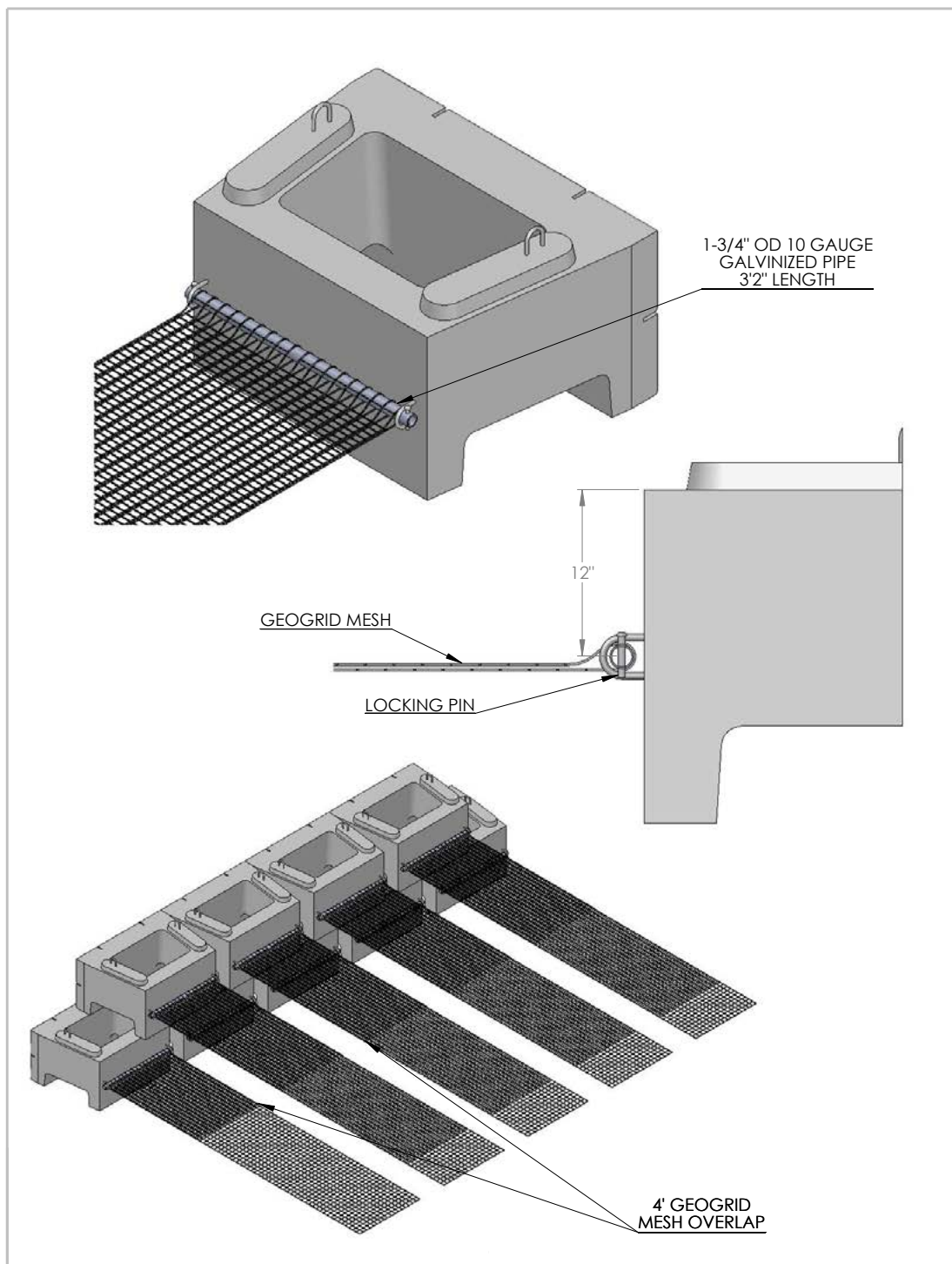


DRAWN BY	DATE	TITLE:
DAN BALLING	12/12/2013	20' POSITIVE CONNECTION
16500 SOUTH 500 WEST BLUFFDALE, UTAH 84065 PHONE: (801) 571-2028		DWG NO.
		M-04
SCALE: 1: 15		SHEET 1 OF 1



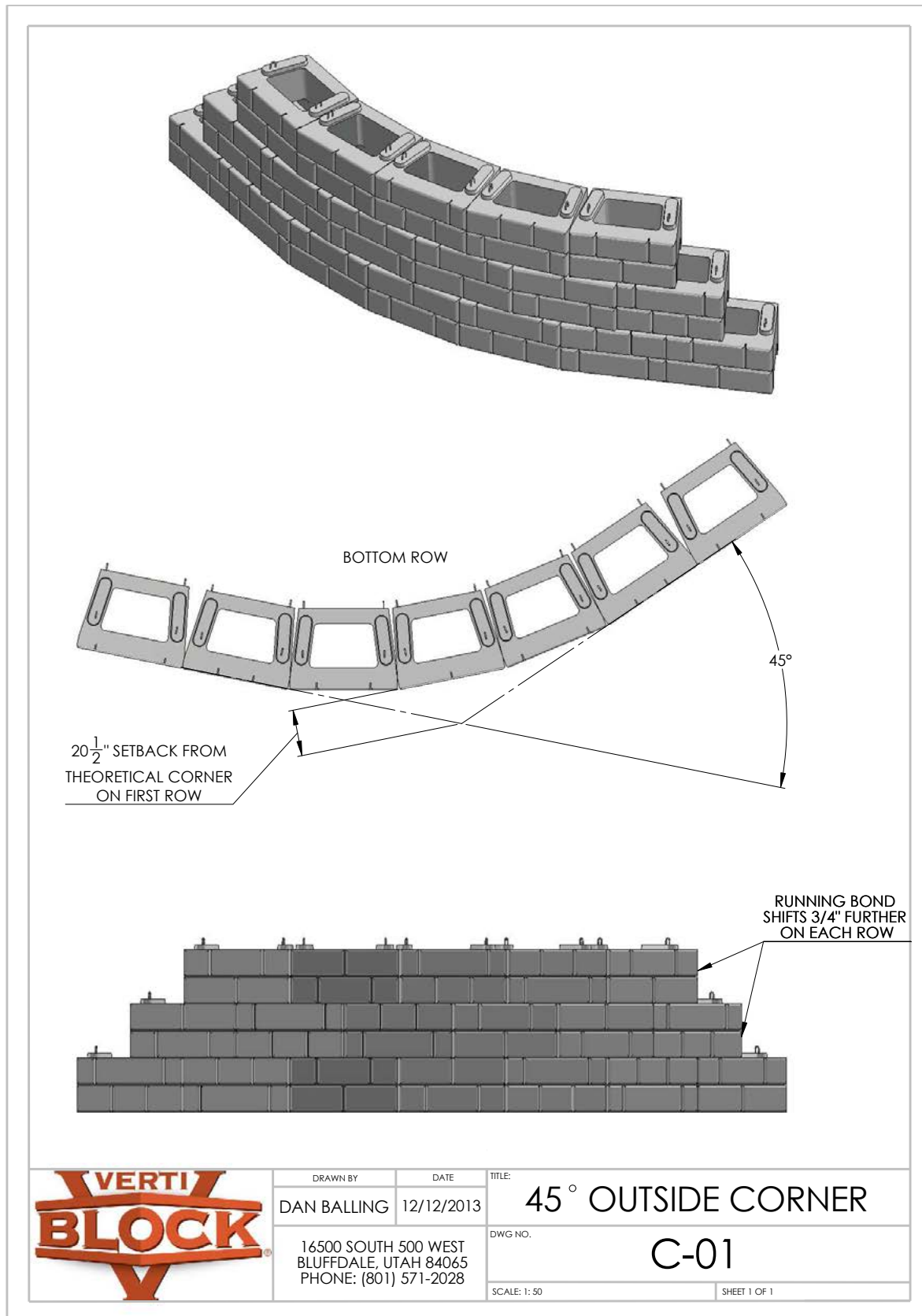


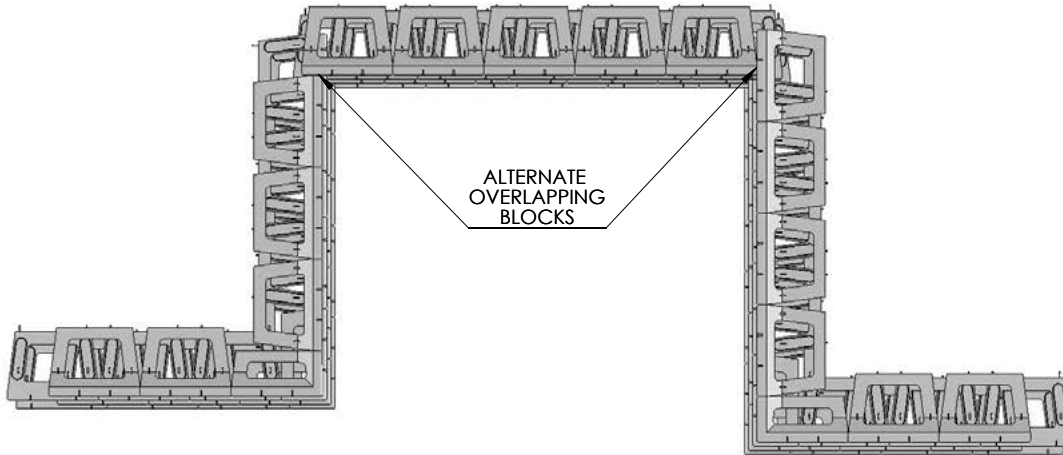
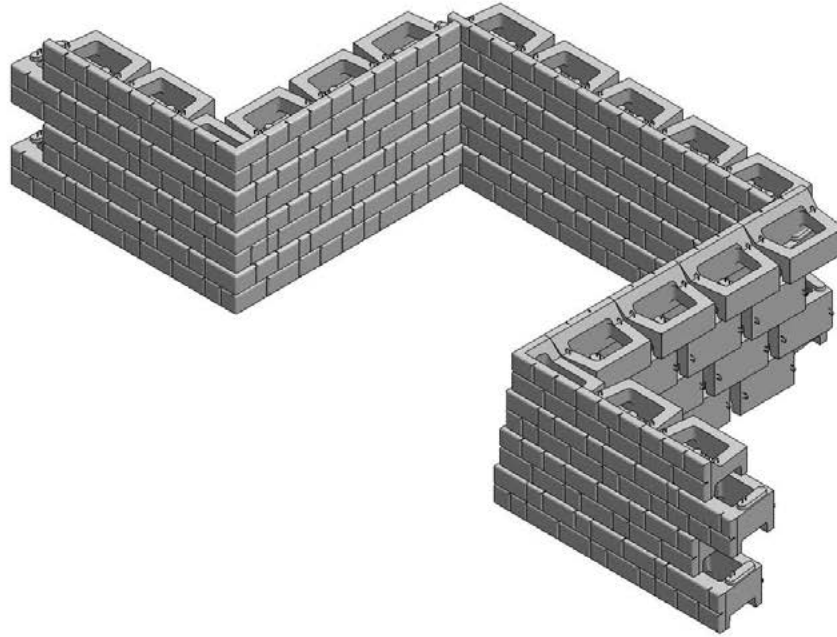
	DRAWN BY	DATE	TITLE
	DAN BALLING	12/12/2013	FRICITION CONNECTION
	16500 SOUTH 500 WEST BLUFFDALE, UTAH 84065 PHONE: (801) 571-2028		DWG NO.
			M-01
	SCALE: 1:7		SHEET 1 OF 1



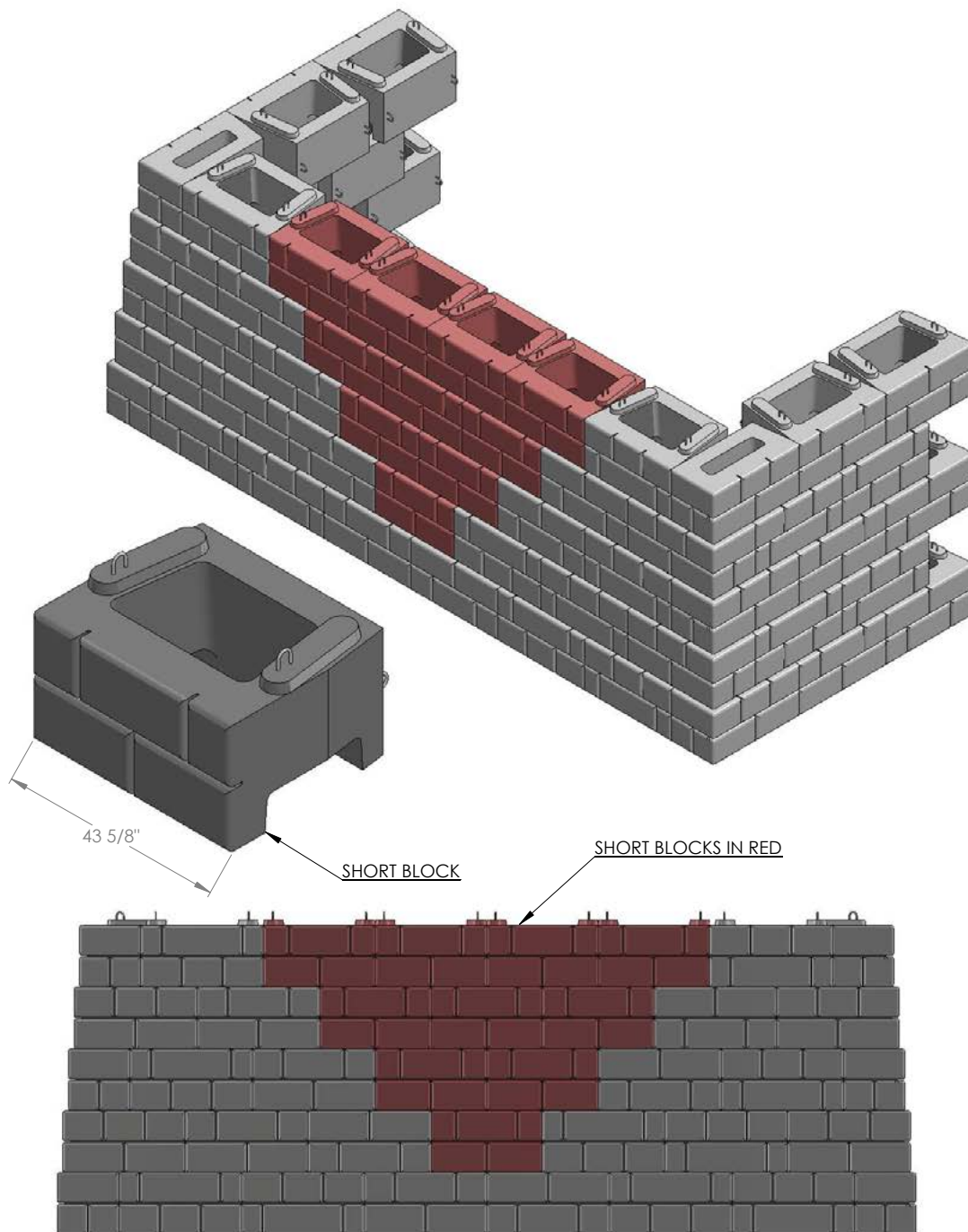
DRAWN BY	DATE
DAN BALLING	12/12/2013
16500 SOUTH 500 WEST BLUFFDALE, UTAH 84065 PHONE: (801) 571-2028	

TITLE:	POSITIVE CONNECTION
DWG NO.	M-02
SCALE: 1: 15	SHEET 1 OF 1



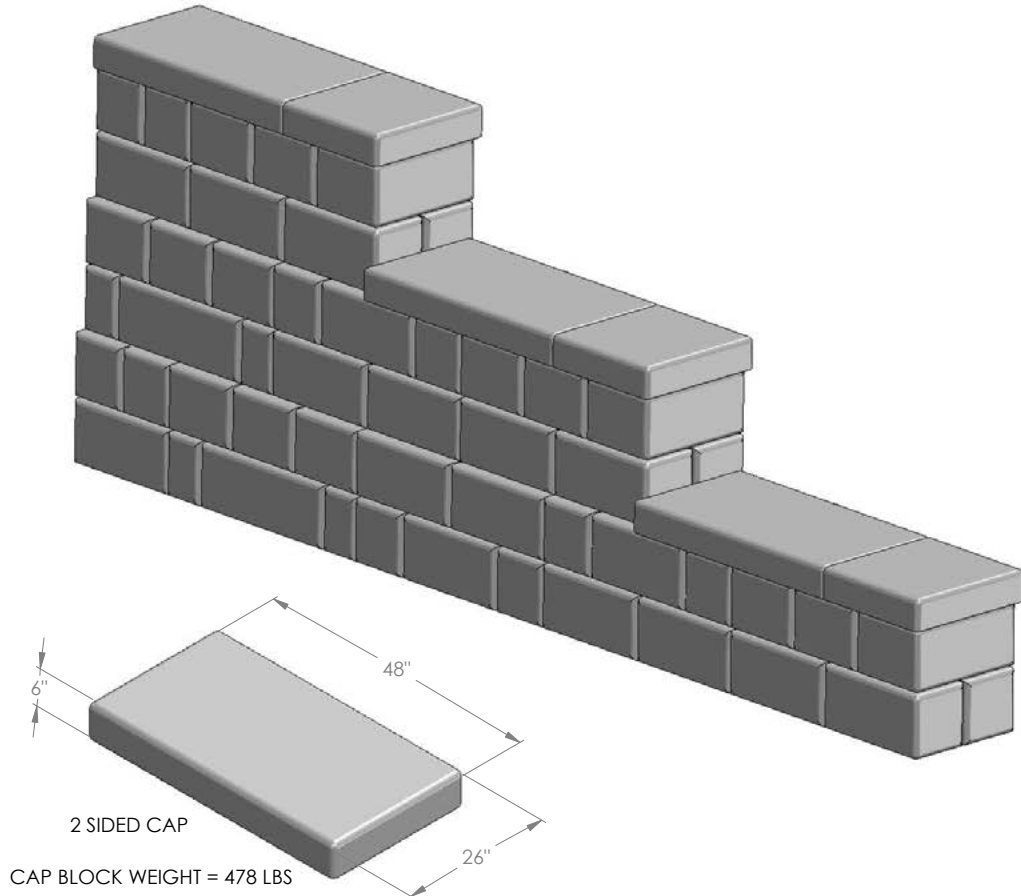


DRAWN BY	DATE	TITLE:
DAN BALLING	12/12/2013	DOUBLE 90° INSIDE CORNER
16500 SOUTH 500 WEST BLUFFDALE, UTAH 84065 PHONE: (801) 571-2028		DWG NO.
		C-02
SCALE: 1: 50		SHEET 1 OF 1

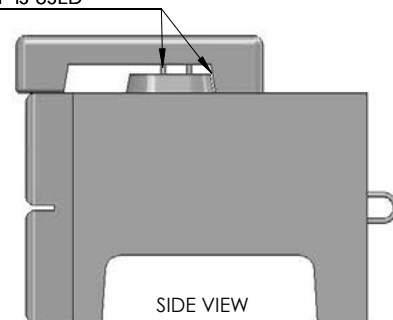
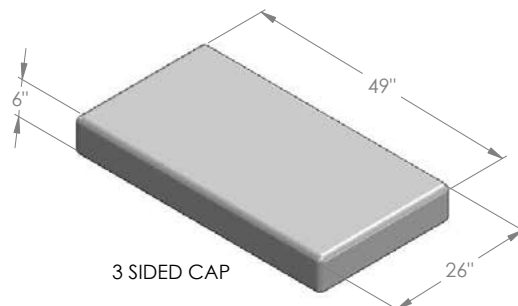


DRAWN BY	DATE	TITLE:
DAN BALLING	12/12/2013	DOUBLE 90° OUTSIDE CORNER
16500 SOUTH 500 WEST BLUFFDALE, UTAH 84065 PHONE: (801) 571-2028		DWG NO.
		C-03
SCALE: 1: 50		SHEET 1 OF 1

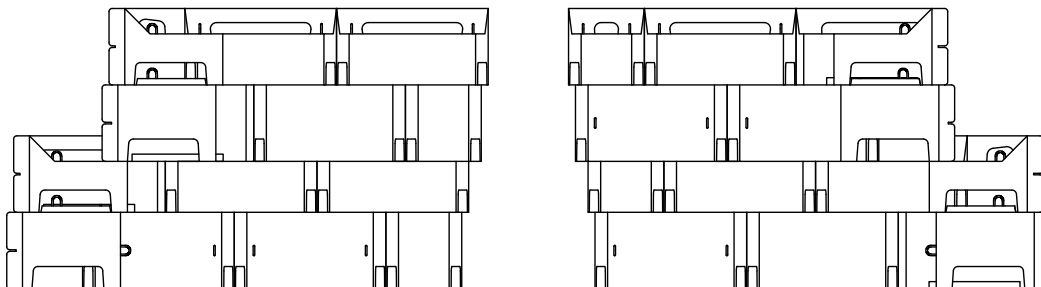
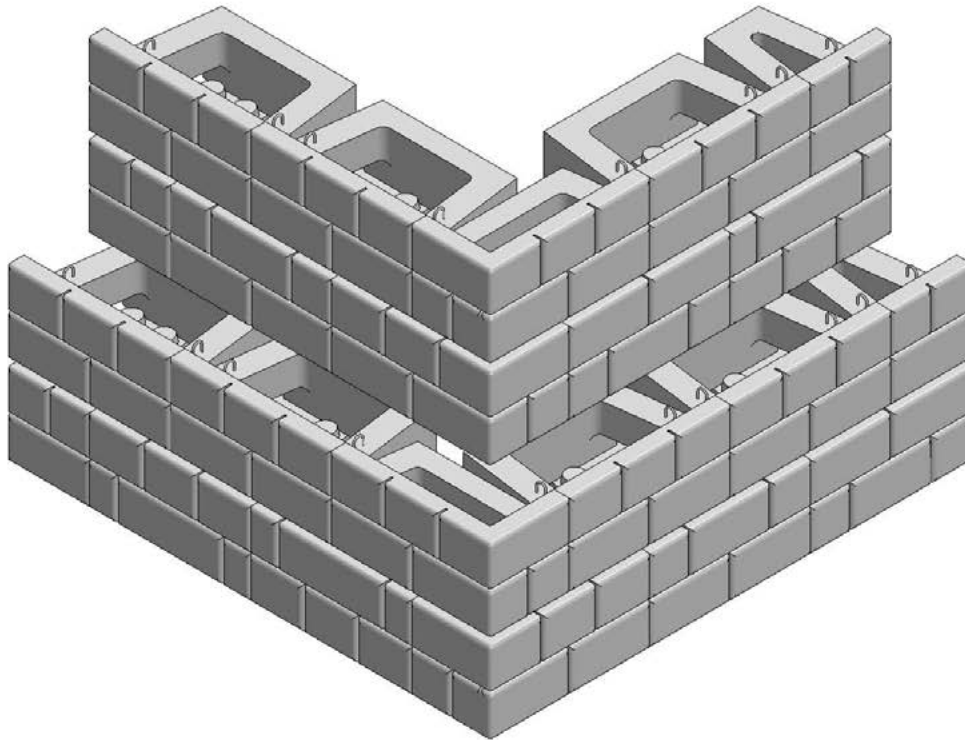
6 INCH CAP STEP-DOWN



CONFLICTING AREA WILL REQUIRE THE USE OF
A 13" NUB BLOCKOUT OR SAW CUT AND REMOVAL
OF PICK POINT WHEN CAP IS USED



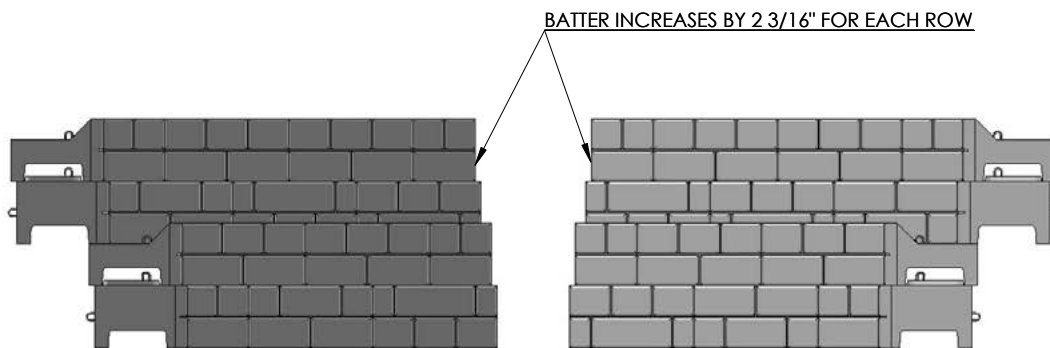
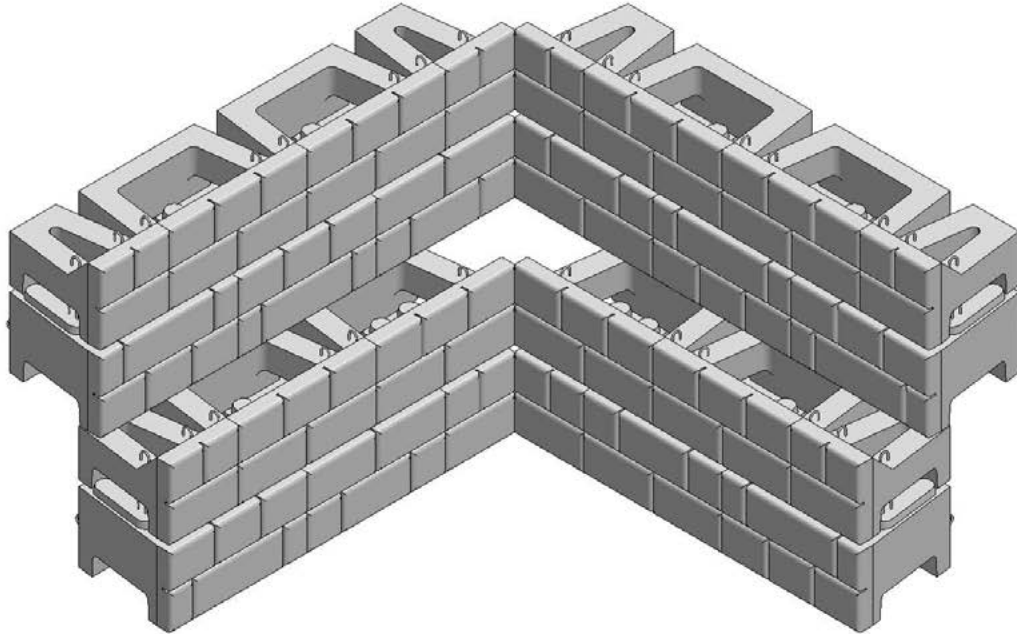
DRAWN BY	DATE	TITLE:
DAN BALLING	12/18/2013	6" CAP BLOCK SCENARIO
16500 SOUTH 500 WEST BLUFFDALE, UTAH 84065 PHONE: (801) 571-2028		DWG NO.
		CB-01
SCALE: 1: 4		SHEET 1 OF 1



BACK SIDE VIEWS

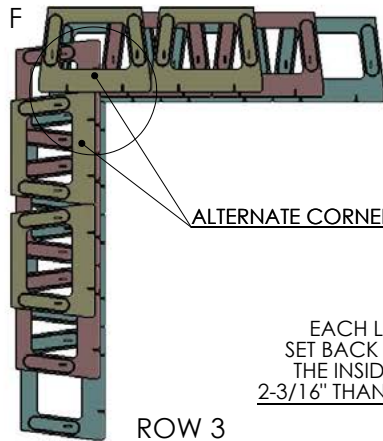
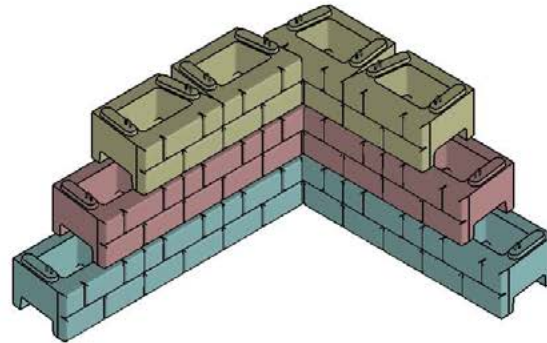
NOTE:
REFERENCE OUTSIDE CORNER DETAIL ON NUB BLOCKOUT

	DRAWN BY	DATE	TITLE:
	DAN BALLING	12/12/2013	PLANTER ROW OUTSIDE CORNER
	16500 SOUTH 500 WEST BLUFFDALE, UTAH 84065 PHONE: (801) 571-2028		DWG NO. PR-02
			SCALE: 1: 4 SHEET 1 OF 1



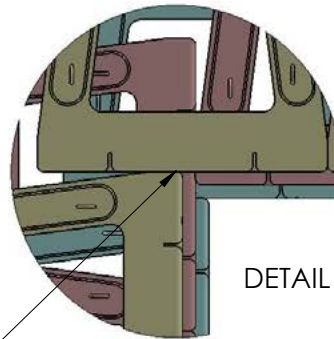
DRAWN BY	DATE	TITLE:
DAN BALLING	12/12/2013	PLANTER ROW INSIDE CORNER
16500 SOUTH 500 WEST BLUFFDALE, UTAH 84065 PHONE: (801) 571-2028		DWG NO.
		PR-03
SCALE: 1: 4		SHEET 1 OF 1

INTERLACED INSIDE CORNER DETAIL



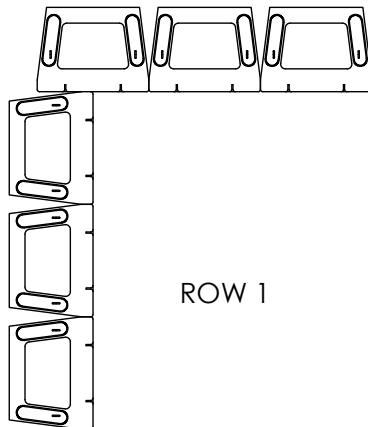
ALTERNATE CORNER OVERLAP

EACH LEVEL WILL BE
SET BACK AND TOWARD
THE INSIDE CORNER BY
2-3/16" THAN THE ONE BELOW

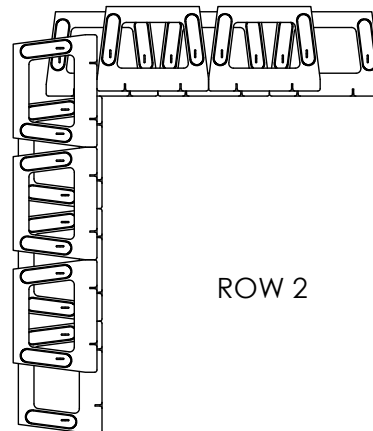


DETAIL F

ROW 3



ROW 1

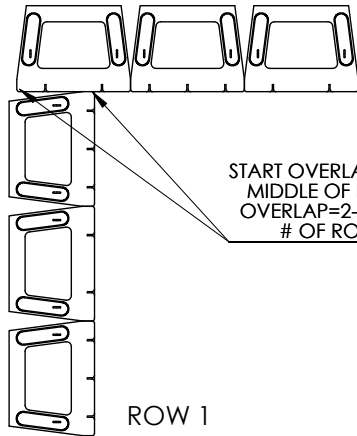
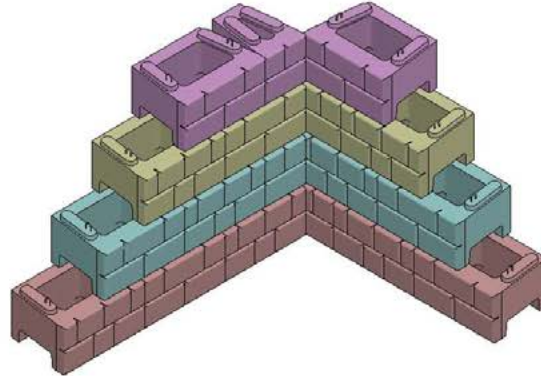


ROW 2



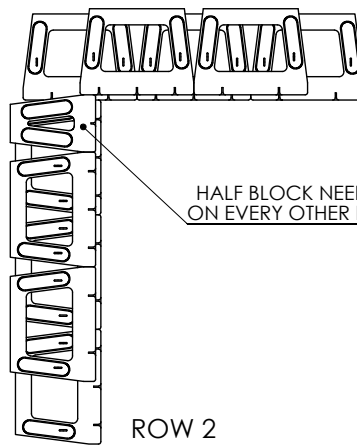
DRAWN BY	DATE	TITLE:
DAN BALLING	12/12/2013	INTERLACED INSIDE CORNER
16500 SOUTH 500 WEST BLUFFDALE, UTAH 84065 PHONE: (801) 571-2028		DWG NO.
		WD-1
SCALE: 1: 60		SHEET 1 OF 1

BUTT-JOINT INSIDE CORNER DETAIL



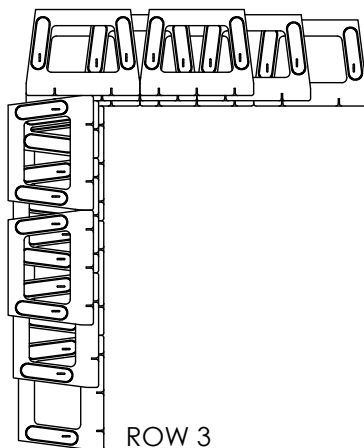
START OVERLAP FROM
MIDDLE OF BLOCK
OVERLAP=2-3/16" X
OF ROWS

ROW 1

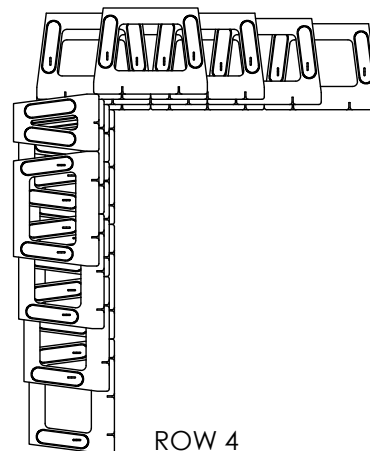


HALF BLOCK NEEDED
ON EVERY OTHER ROW

ROW 2



ROW 3



ROW 4



DRAWN BY
DAN BALLING

DATE
12/12/2013

16500 SOUTH 500 WEST
BLUFFDALE, UTAH 84065
PHONE: (801) 571-2028

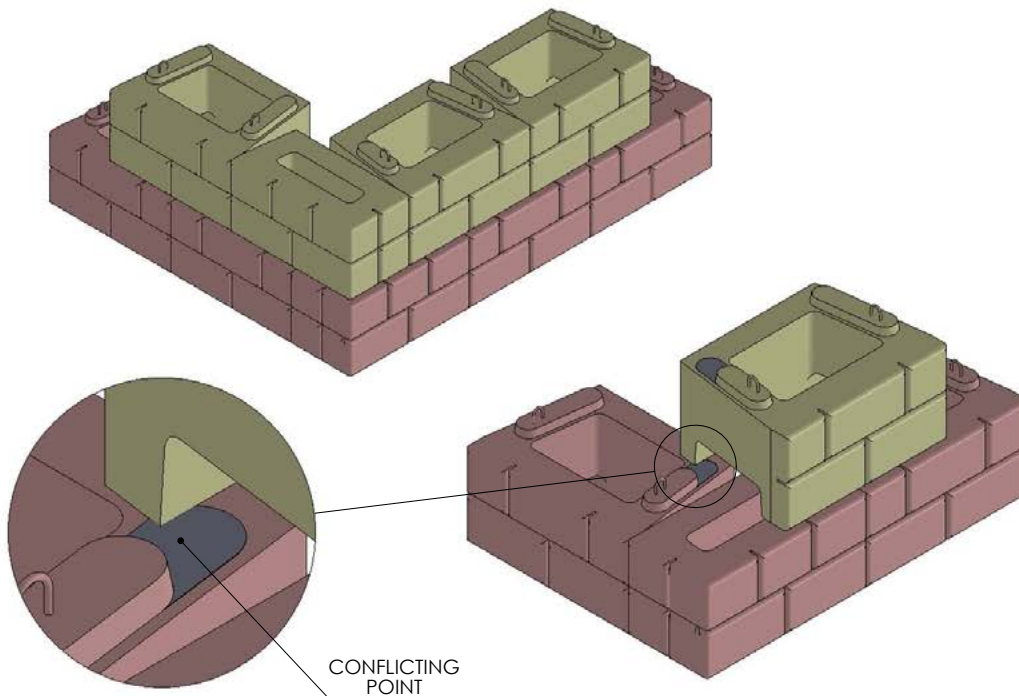
TITLE:
BUTT-JOINT INSIDE CORNER

DWG NO.
WD-2

SCALE: 1: 60

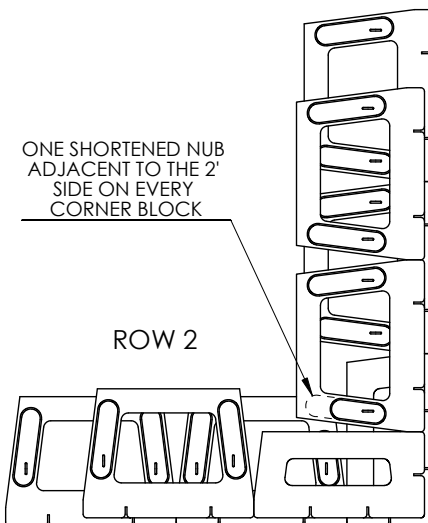
SHEET 1 OF 1

OUTSIDE CORNER DETAIL



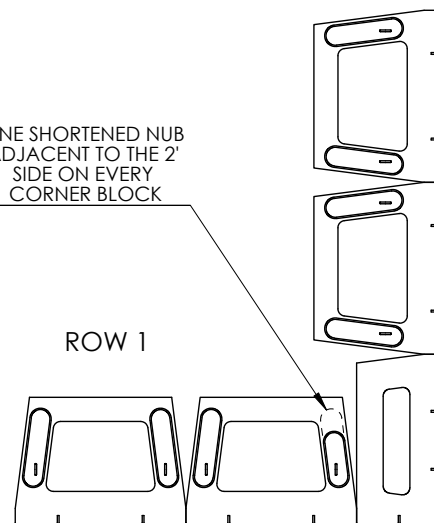
ONE SHORTENED NUB
ADJACENT TO THE 2'
SIDE ON EVERY
CORNER BLOCK

ROW 2



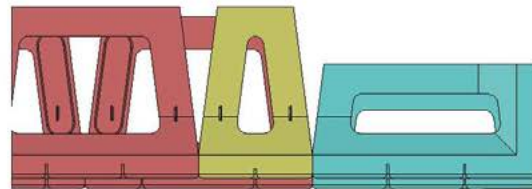
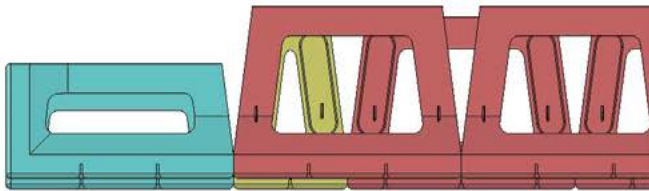
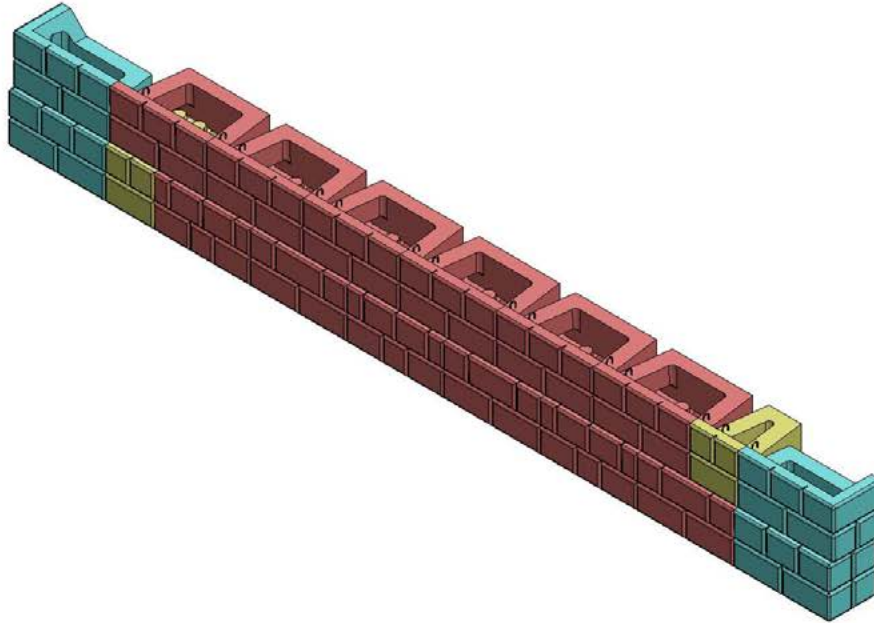
ONE SHORTENED NUB
ADJACENT TO THE 2'
SIDE ON EVERY
CORNER BLOCK

ROW 1



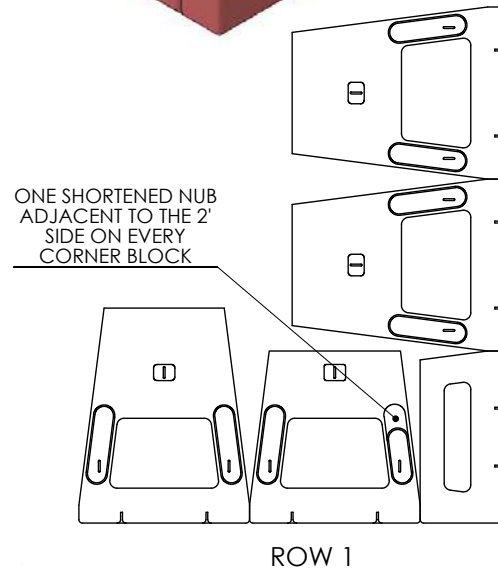
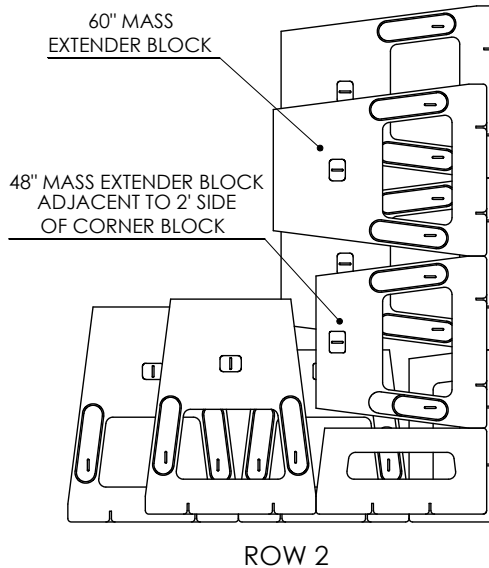
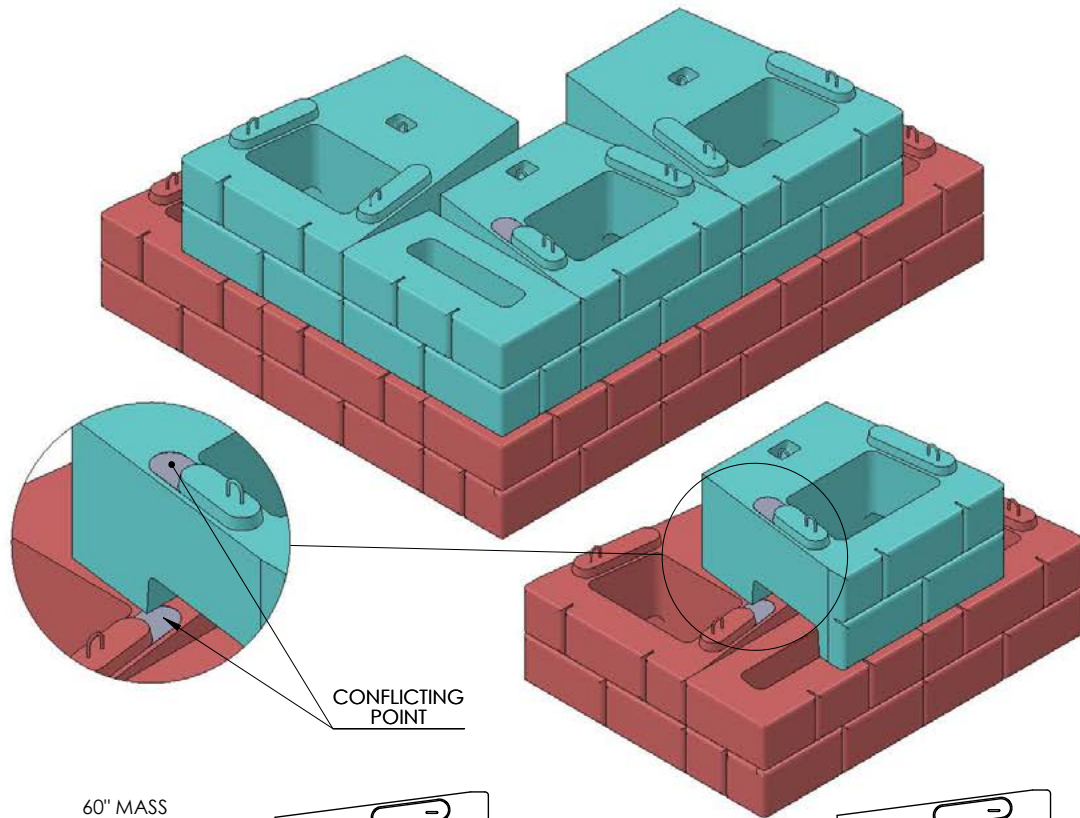
DRAWN BY	DATE	TITLE:
DAN BALLING	12/12/2013	OUTSIDE CORNER
16500 SOUTH 500 WEST BLUFFDALE, UTAH 84065 PHONE: (801) 571-2028		DWG NO.
		WD-3
SCALE: 1: 40		SHEET 1 OF 1

STRAIGHT FACE WITH SIMPLE 2' RETURNS



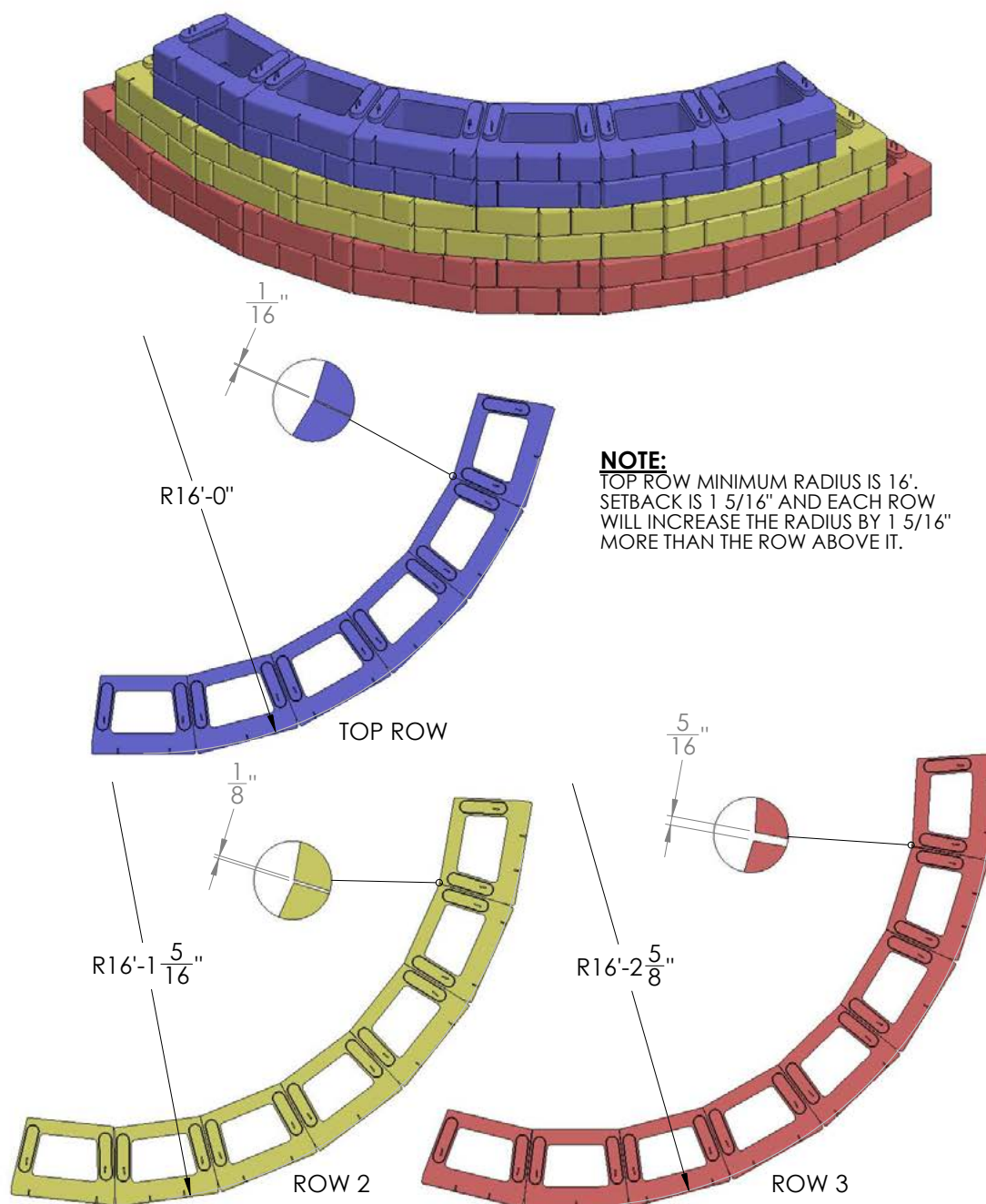
DRAWN BY	DATE	TITLE:
DAN BALLING	12/12/2013	2' RETURN
16500 SOUTH 500 WEST BLUFFDALE, UTAH 84065 PHONE: (801) 571-2028		DWG NO.
		WD-4
SCALE: 1: 40		SHEET 1 OF 1

OUTSIDE CORNER WITH MASS EXTENDERS DETAIL



DRAWN BY	DATE	TITLE
DAN BALLING	12/12/2013	OUTSIDE CORNER w/ ME
16500 SOUTH 500 WEST BLUFFDALE, UTAH 84065 PHONE: (801) 571-2028		DWG NO.
		WD-5
SCALE: 1: 40		SHEET 1 OF 1

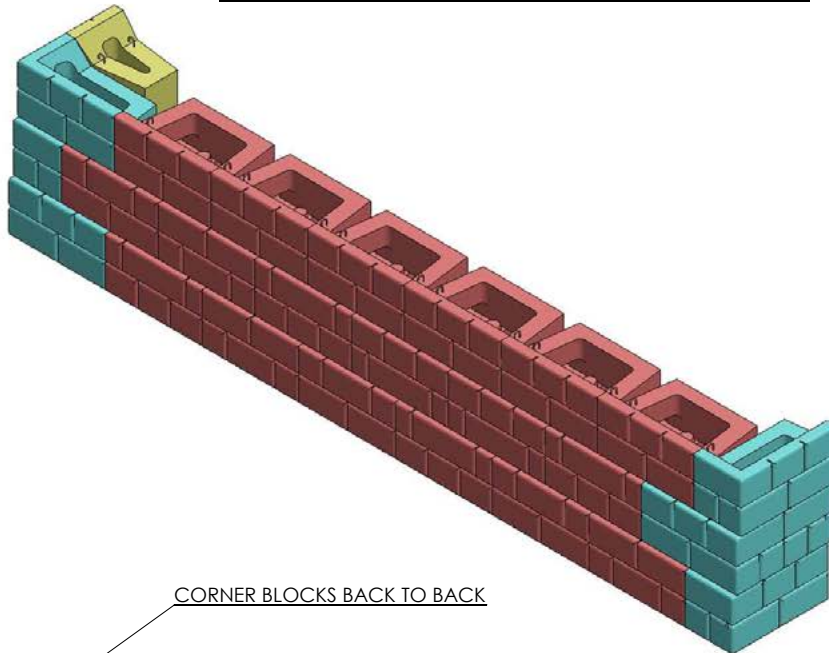
OUTSIDE CURVE DETAIL



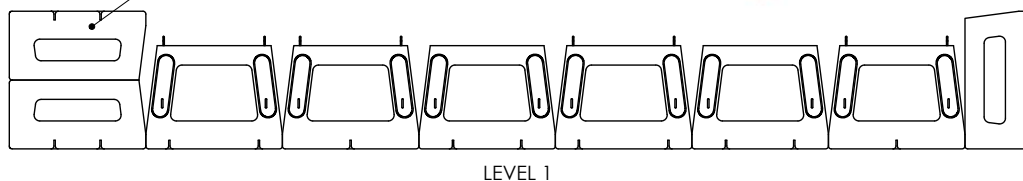
DRAWN BY	DATE
DAN BALLING	12/12/2013
16500 SOUTH 500 WEST BLUFFDALE, UTAH 84065 PHONE: (801) 571-2028	

TITLE:	OUTSIDE CURVE
DWG NO.	WD-6
SCALE: 1: 40	SHEET 1 OF 1

STRAIGHT FACE WITH SIMPLE 4' RETURNS

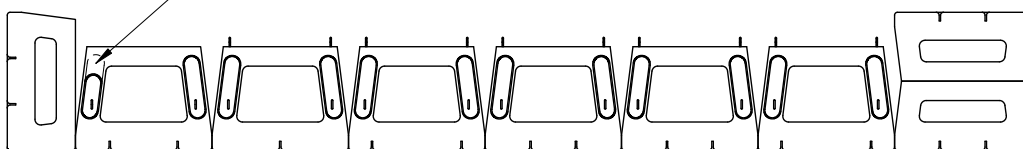


CORNER BLOCKS BACK TO BACK



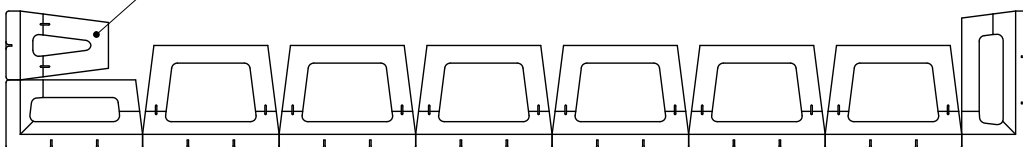
LEVEL 1

6-1/2" NUB BLOCKOUT NEEDED



LEVEL 2

HALF TOP BLOCK REQUIRES
BLOCKOUT ON BLOCK BELOW

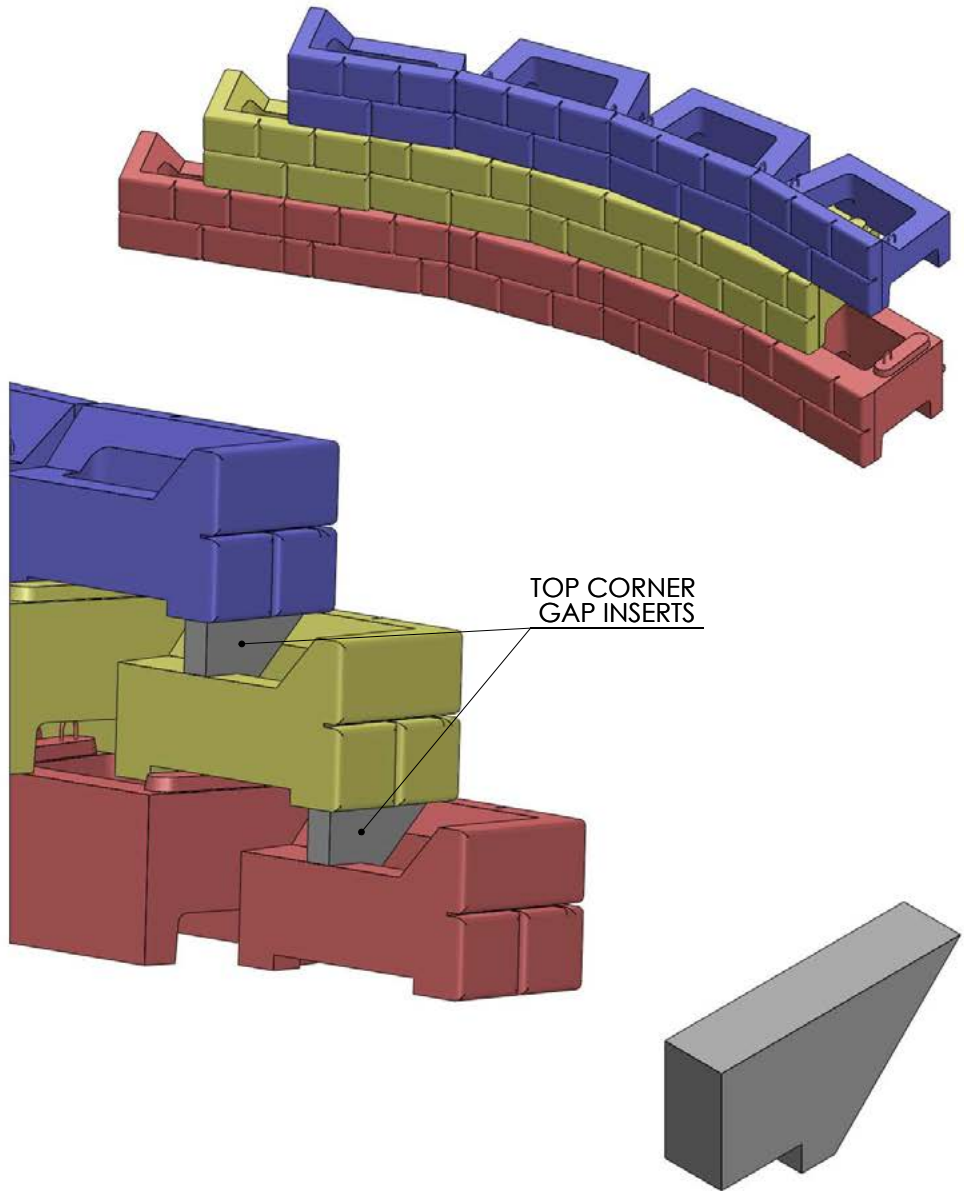


LEVEL 3



DRAWN BY	DATE	TITLE:
DAN BALLING	12/12/2013	4' RETURN
16500 SOUTH 500 WEST BLUFFDALE, UTAH 84065 PHONE: (801) 571-2028		DWG NO.
		WD-07
SCALE: 1: 4		SHEET 1 OF 1

2' STEP DOWN WITH TOP CORNER GAP INSERTS

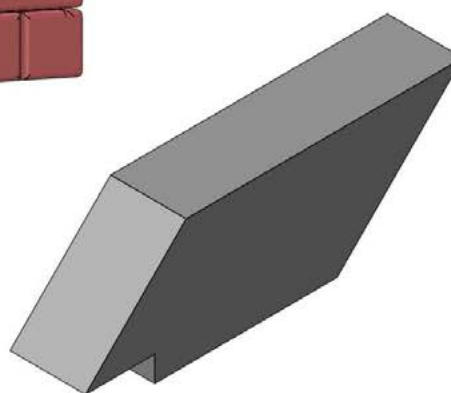
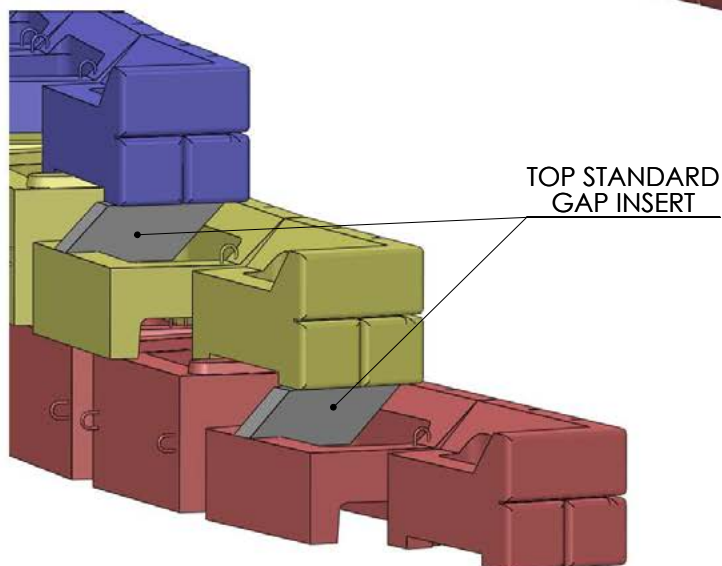
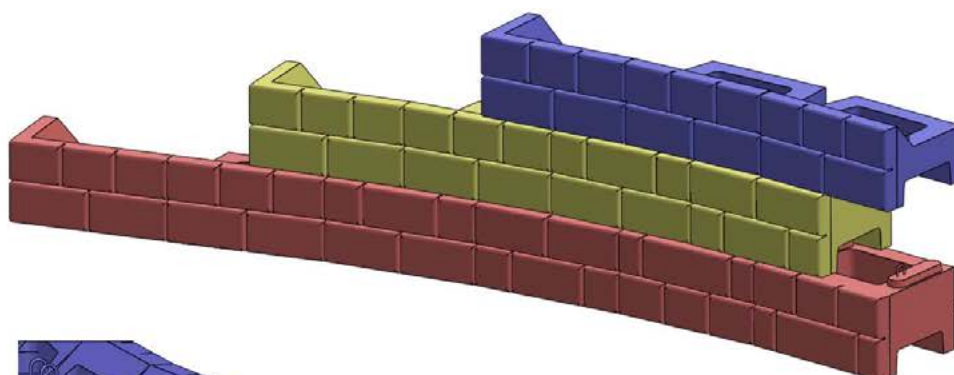


TOP CORNER GAP INSERT



DRAWN BY	DATE	TITLE:
DAN BALLING	12/12/2013	2' STEP DOWN
16500 SOUTH 500 WEST BLUFFDALE, UTAH 84065 PHONE: (801) 571-2028		DWG NO.
		WD-8
SCALE: 1: 40		SHEET 1 OF 1

6' STEP DOWN WITH TOP STANDARD GAP INSERT

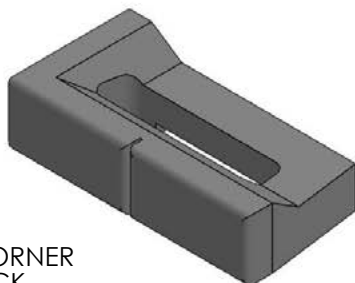
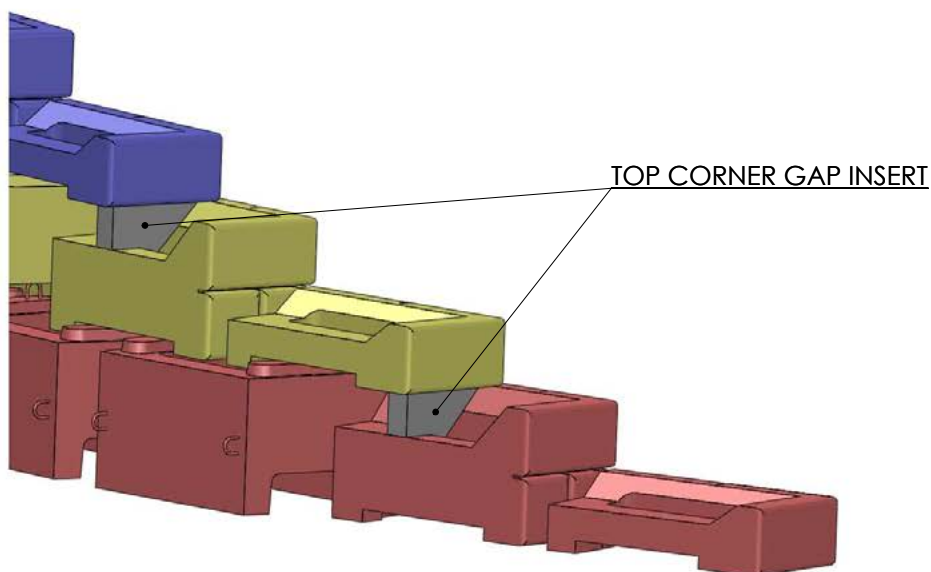
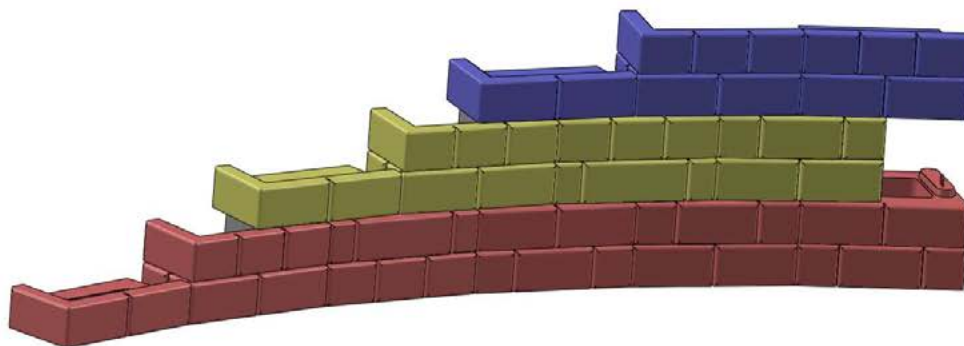


TOP STANDARD GAP INSERT

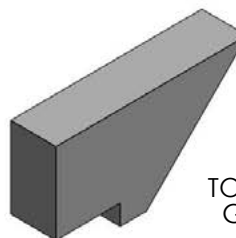


DRAWN BY	DATE	TITLE:
DAN BALLING	12/12/2013	6' STEP DOWN
16500 SOUTH 500 WEST BLUFFDALE, UTAH 84065 PHONE: (801) 571-2028		DWG NO.
		WD-9
SCALE: 1: 40		SHEET 1 OF 1

6' STEP DOWN WITH HALF-STEP BLOCK AND TOP CORNER GAP INSERT



HALF-STEP CORNER
TOP BLOCK



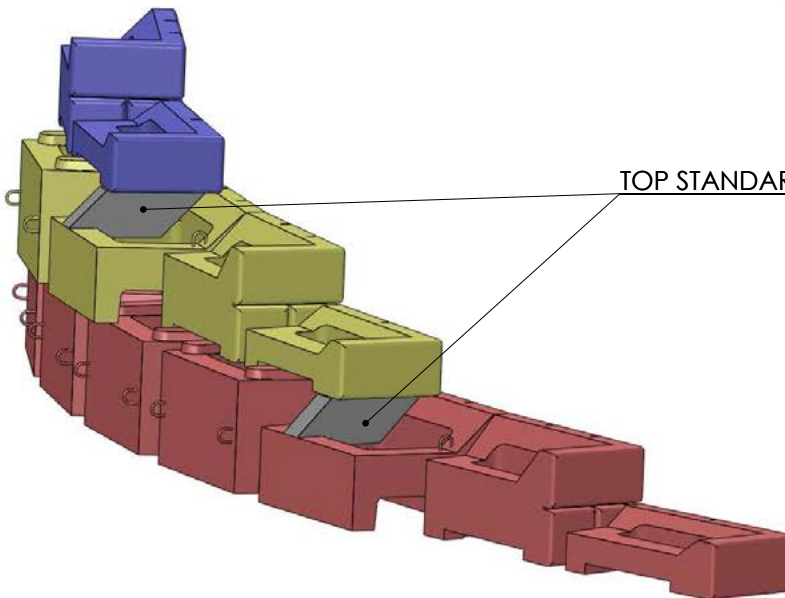
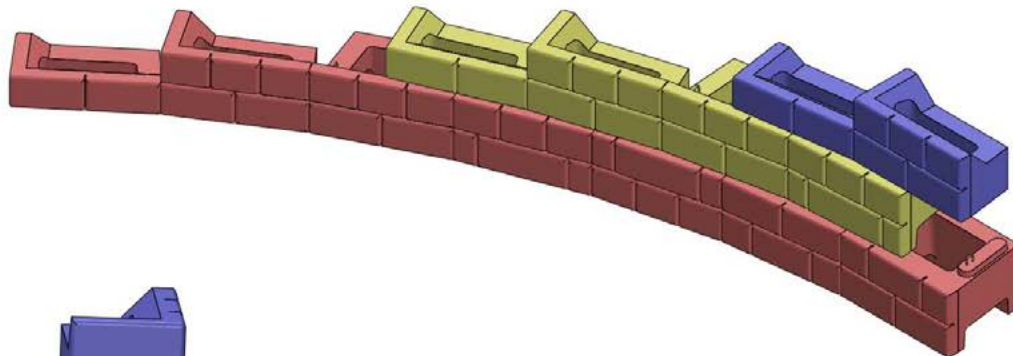
TOP CORNER
GAP INSERT



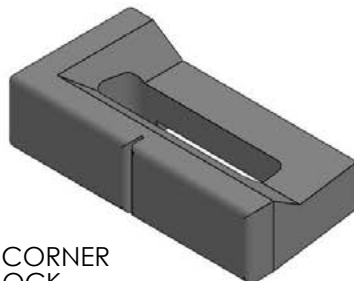
DRAWN BY	DATE
DAN BALLING	12/12/2013
16500 SOUTH 500 WEST BLUFFDALE, UTAH 84065 PHONE: (801) 571-2028	

TITLE:	6' STEP W/ HALF STEP BLOCK
DWG NO.	WD-10
SCALE: 1: 40	SHEET 1 OF 1

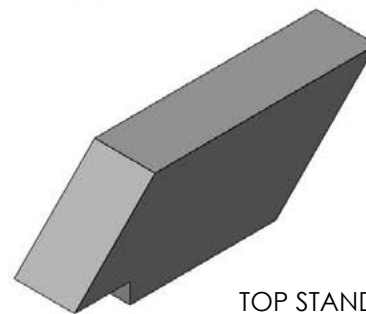
10' STEP DOWN WITH HALF-STEP BLOCK AND TOP STANDARD GAP INSERT



TOP STANDARD GAP INSERT



HALF-STEP CORNER
TOP BLOCK

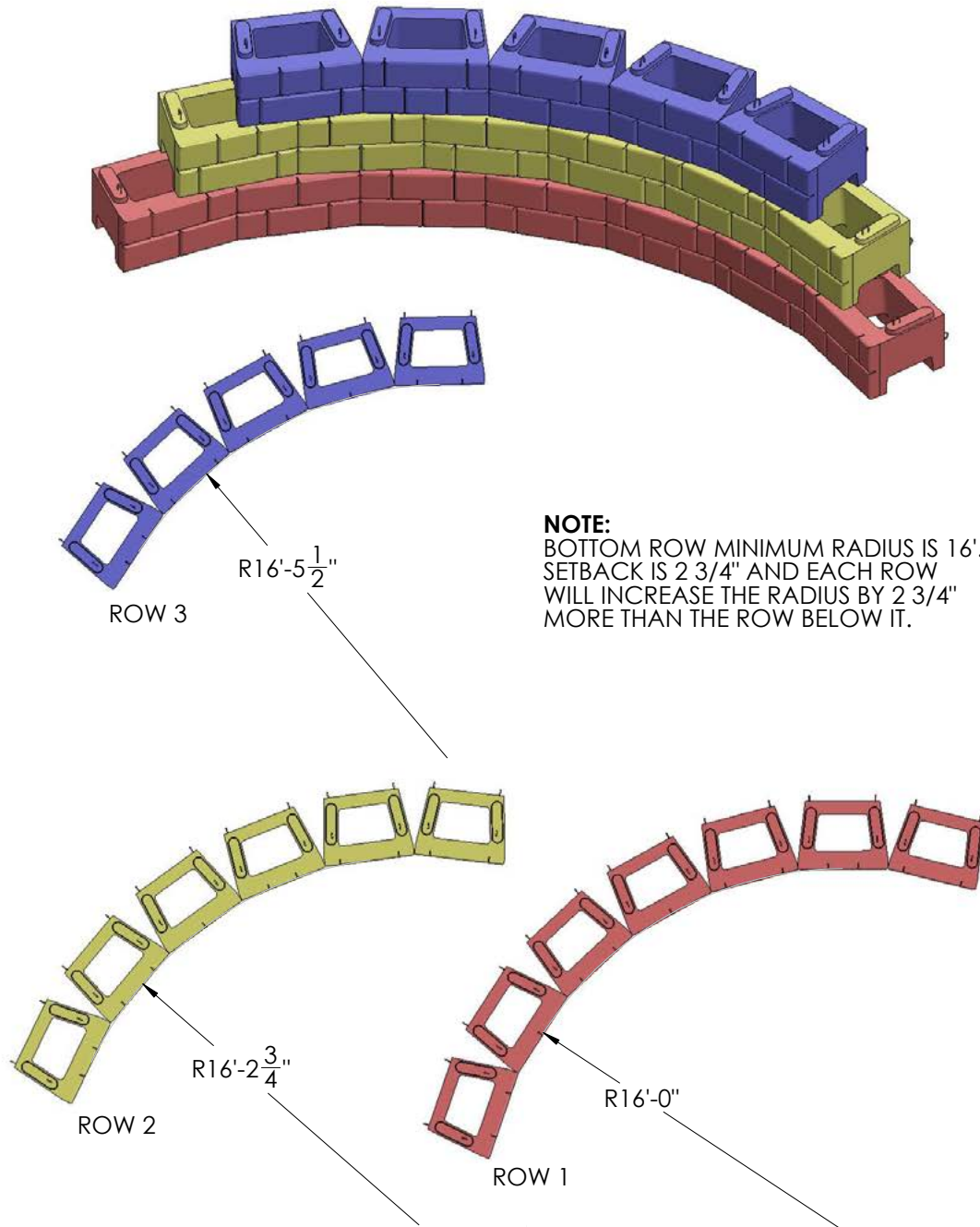


TOP STANDARD
GAP INSERT

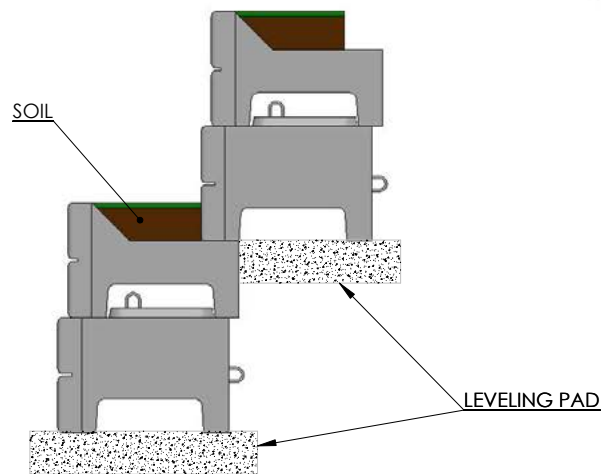
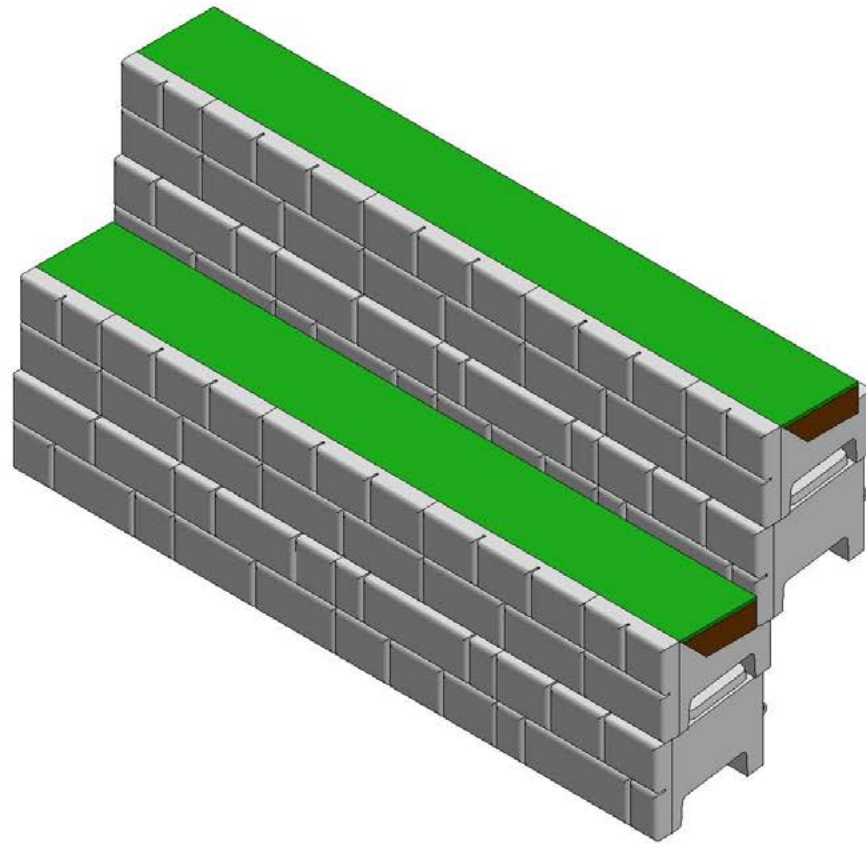


DRAWN BY	DATE	TITLE:
DAN BALLING	12/12/2013	10' STEP W/ HALF STEP BLOCK
16500 SOUTH 500 WEST BLUFFDALE, UTAH 84065 PHONE: (801) 571-2028		DWG NO.
		WD-11
SCALE: 1: 40		SHEET 1 OF 1

INSIDE CURVE DETAIL

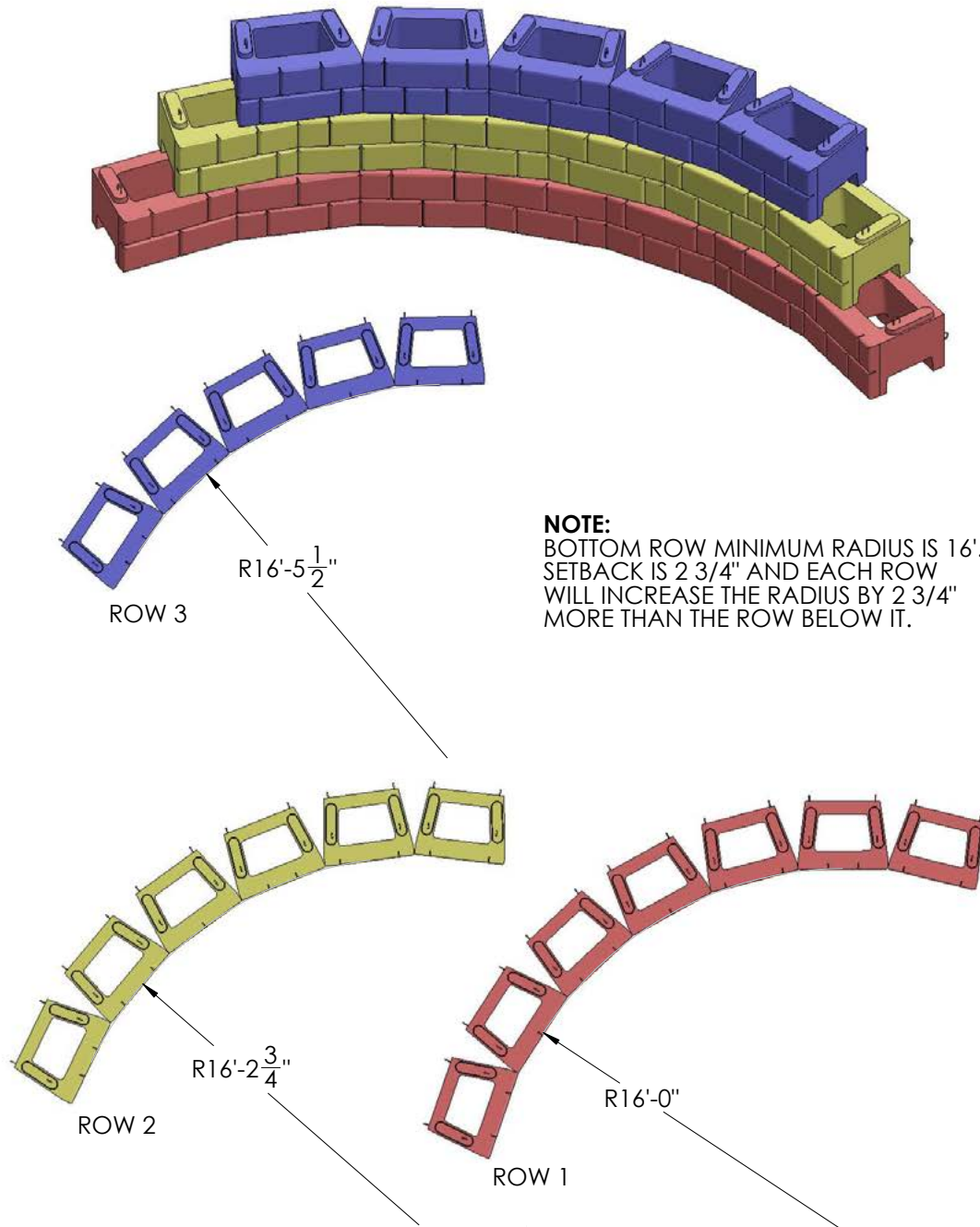


DRAWN BY	DATE	TITLE:
DAN BALLING	12/12/2013	INSIDE CURVE
16500 SOUTH 500 WEST BLUFFDALE, UTAH 84065 PHONE: (801) 571-2028		DWG NO.
		WD-12
SCALE: 1: 40		SHEET 1 OF 1

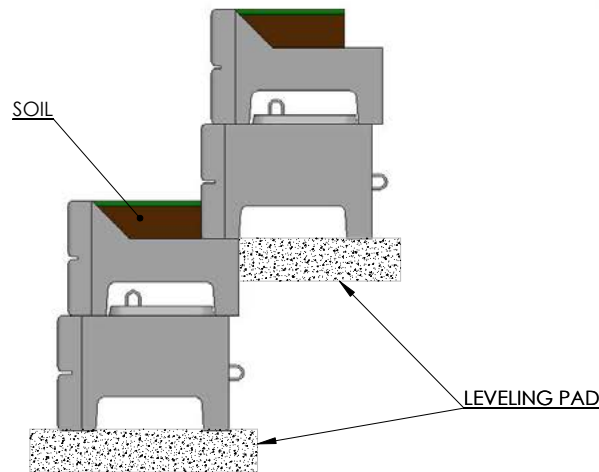
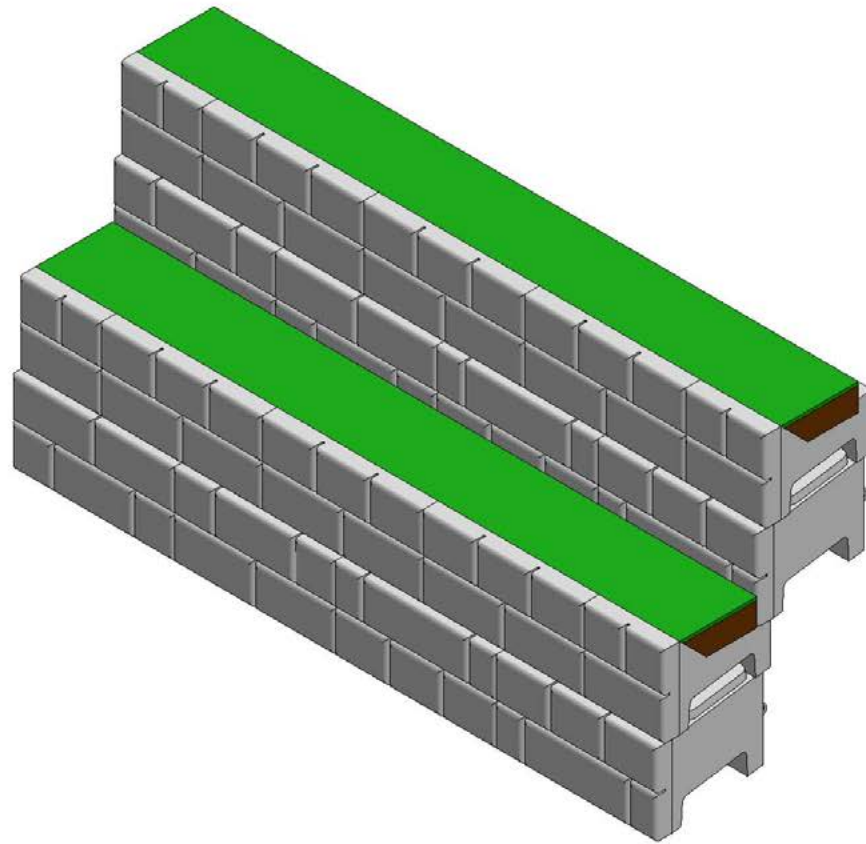


DRAWN BY	DATE	TITLE:
DAN BALLING	12/12/2013	PLANTER ROW WALL
16500 SOUTH 500 WEST BLUFFDALE, UTAH 84065 PHONE: (801) 571-2028		DWG NO.
		PR-01
SCALE: 1: 4		SHEET 1 OF 1

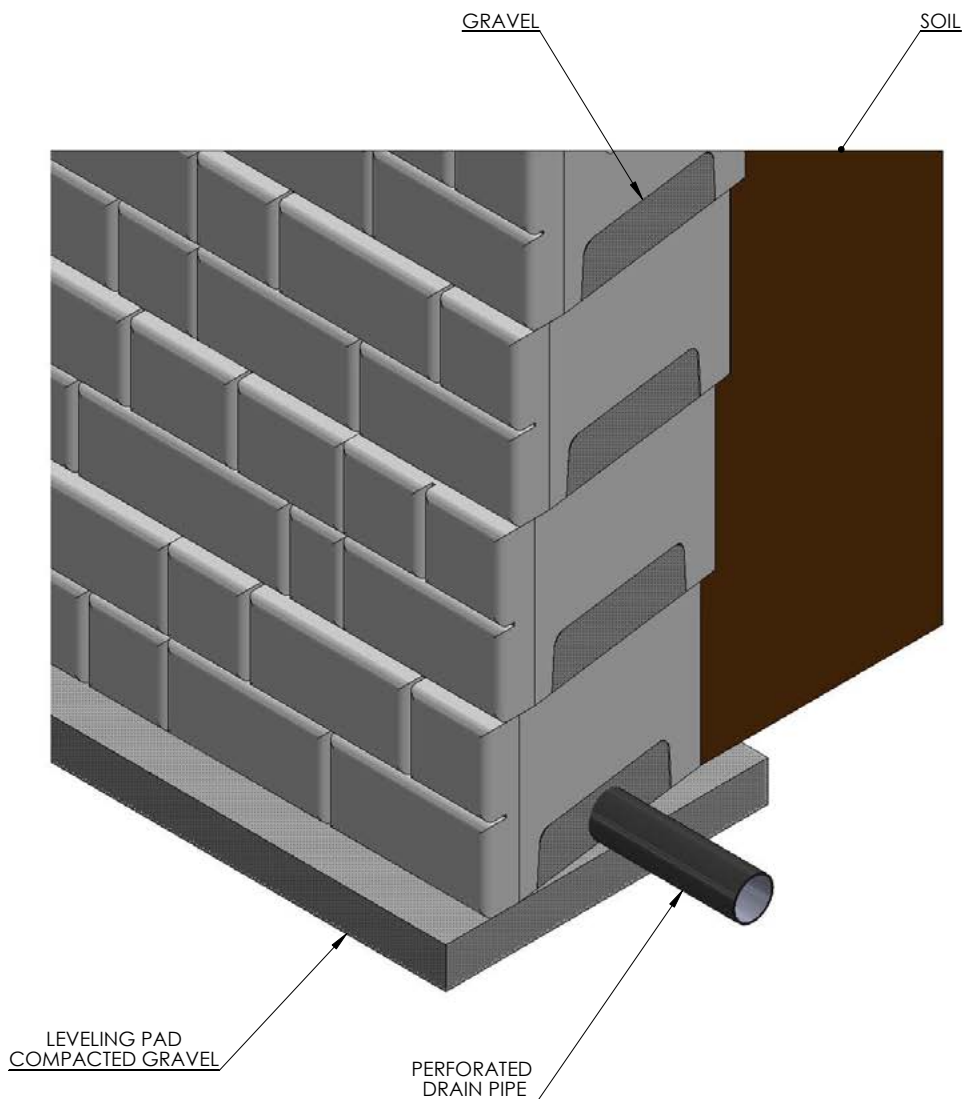
INSIDE CURVE DETAIL



DRAWN BY	DATE	TITLE:
DAN BALLING	12/12/2013	INSIDE CURVE
16500 SOUTH 500 WEST BLUFFDALE, UTAH 84065 PHONE: (801) 571-2028		DWG NO.
		WD-12
SCALE: 1: 40		SHEET 1 OF 1



DRAWN BY	DATE	TITLE:
DAN BALLING	12/12/2013	PLANTER ROW WALL
16500 SOUTH 500 WEST BLUFFDALE, UTAH 84065 PHONE: (801) 571-2028		DWG NO.
		PR-01
SCALE: 1: 4		SHEET 1 OF 1

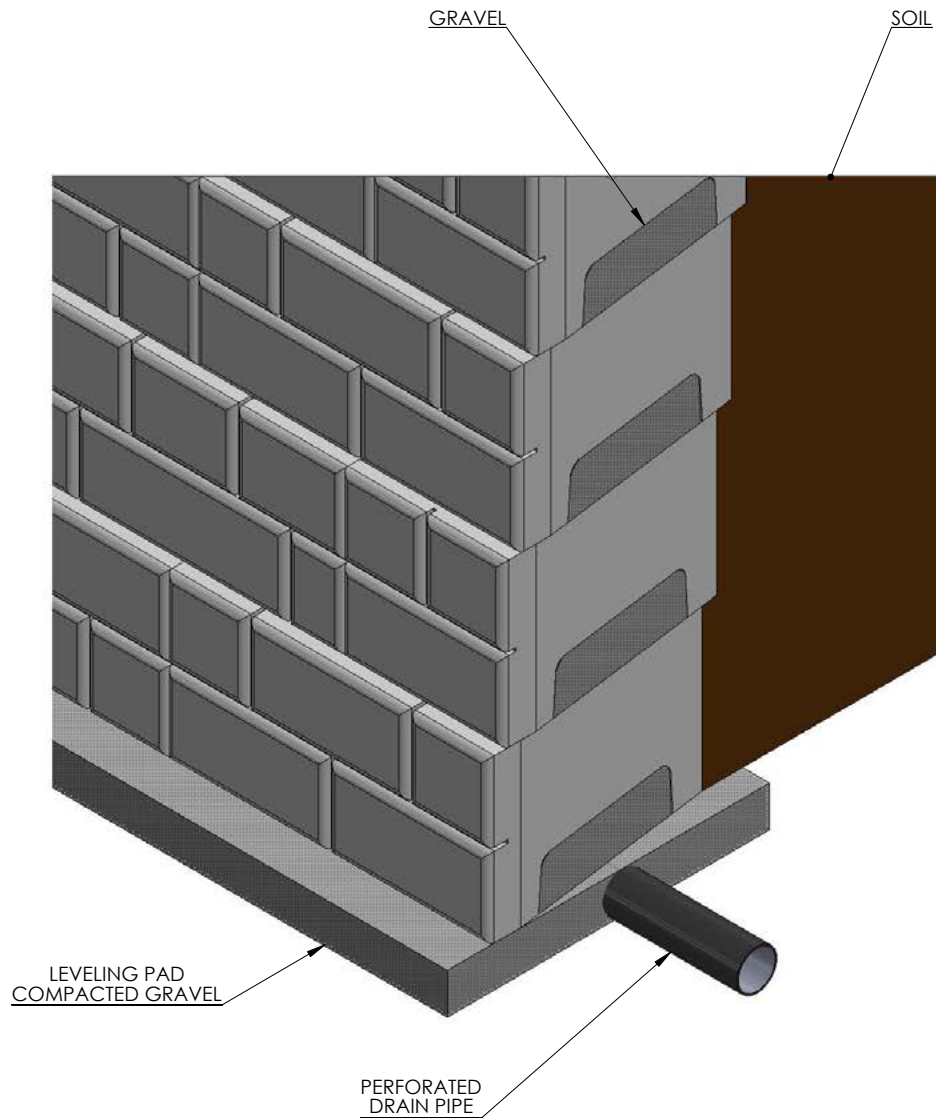


DRAIN PIPE IS PLACED INSIDE GAP AT THE BOTTOM OF THE BLOCK AND ON TOP OF THE LEVELING PAD THEN COVERED WITH GRAVEL.



DRAWN BY	DATE
DAN BALLING	12/18/2013
16500 SOUTH 500 WEST BLUFFDALE, UTAH 84065 PHONE: (801) 571-2028	

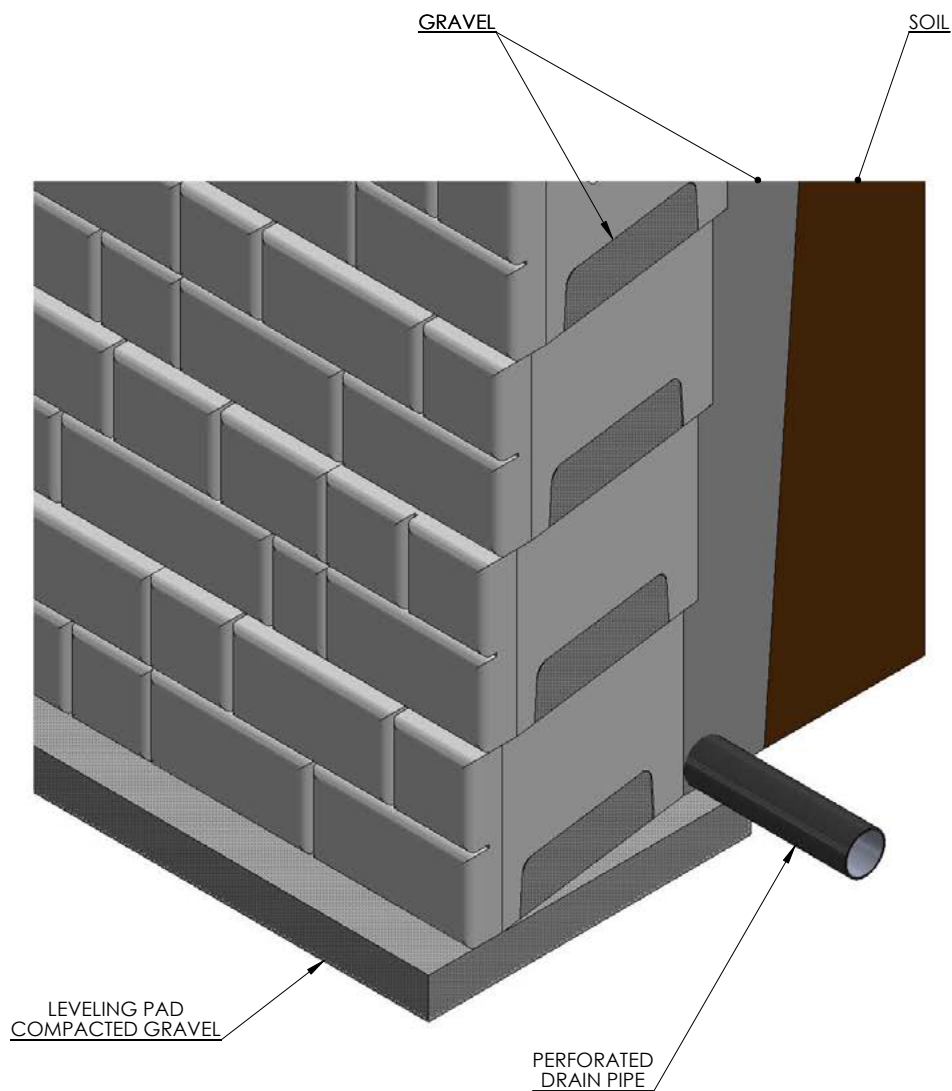
TITLE:	DRAIN PLACEMENT-OPTION #1
DWG NO.	WD-16
SCALE: 1: 20	SHEET 1 OF 1



DRAIN PIPE IS PLACED INSIDE
THE COMPACTED GRAVEL
OF THE LEVELING PAD



DRAWN BY	DATE	TITLE:
DAN BALLING	12/12/2013	DRAIN PLACEMENT-OPTION #2
16500 SOUTH 500 WEST BLUFFDALE, UTAH 84065 PHONE: (801) 571-2028		DWG NO.
		WD-17
SCALE: 1: 20		SHEET 1 OF 1



DRAIN PIPE IS PLACED BEHIND THE BLOCK AND ON TOP OF THE LEVELING PAD.
THIS OPTION REQUIRES 1' OF LOOSE GRAVEL BEHIND THE WALL.
IF DRAINAGE IS A MAJOR CONCERN FOR AN APPLICATION THIS OPTION
MAY BE USED ALONG WITH OPTION 1 OR 2



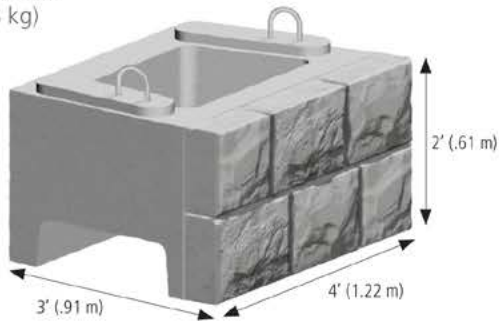
DRAWN BY	DATE	TITLE:
DAN BALLING	12/18/2013	DRAIN PLACEMENT-OPTION #3
16500 SOUTH 500 WEST BLUFFDALE, UTAH 84065 PHONE: (801) 571-2028		DWG NO.
		WD-18
SCALE: 1: 20		SHEET 1 OF 1



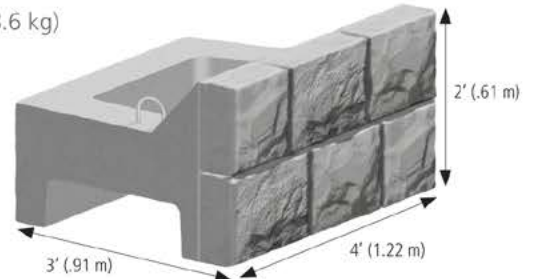
Verti-Block Units

Verti-Block is available in a range of shapes to accommodate all your landscape design needs

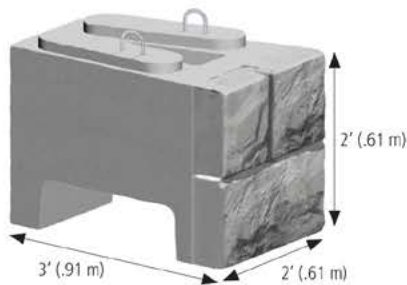
Standard Block
1,755 lbs. (789.8 kg)



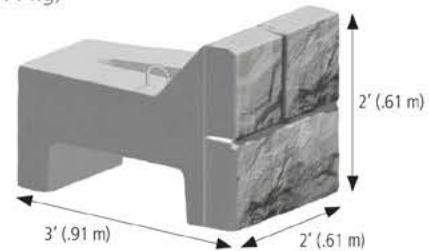
Top Block
1,308 lbs. (588.6 kg)



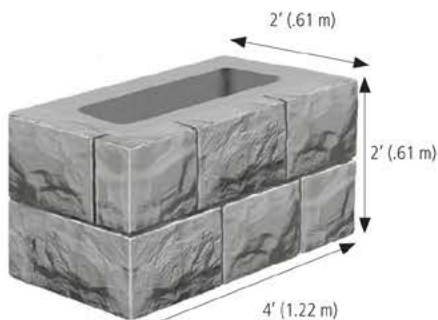
Half Block
1,066 lbs. (479.7 kg)



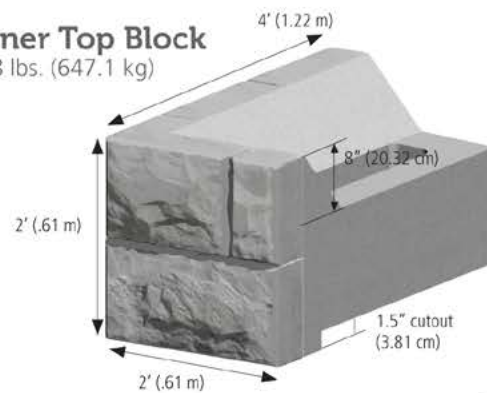
Half Top Block
741 lbs. (333.4 kg)



Corner Block
1,596 lbs. (718.2 kg)



Corner Top Block
1,438 lbs. (647.1 kg)



Diamond Precast

Address 49 Hope Valley Road,
Naval Base

Phone 08 6314 1130
Email info@diamondprecast.com.au
Website www.vertiblockwa.com.au

Verti-Block Units

Recognized worldwide for outstanding aesthetics and a patented system that produces top-quality construction materials, Verti-Block continues to help contractors, developers, and property owners with smart precast solutions.

Vertiblock may be purchased through a Diamond Precast licensed by Verti-Block.