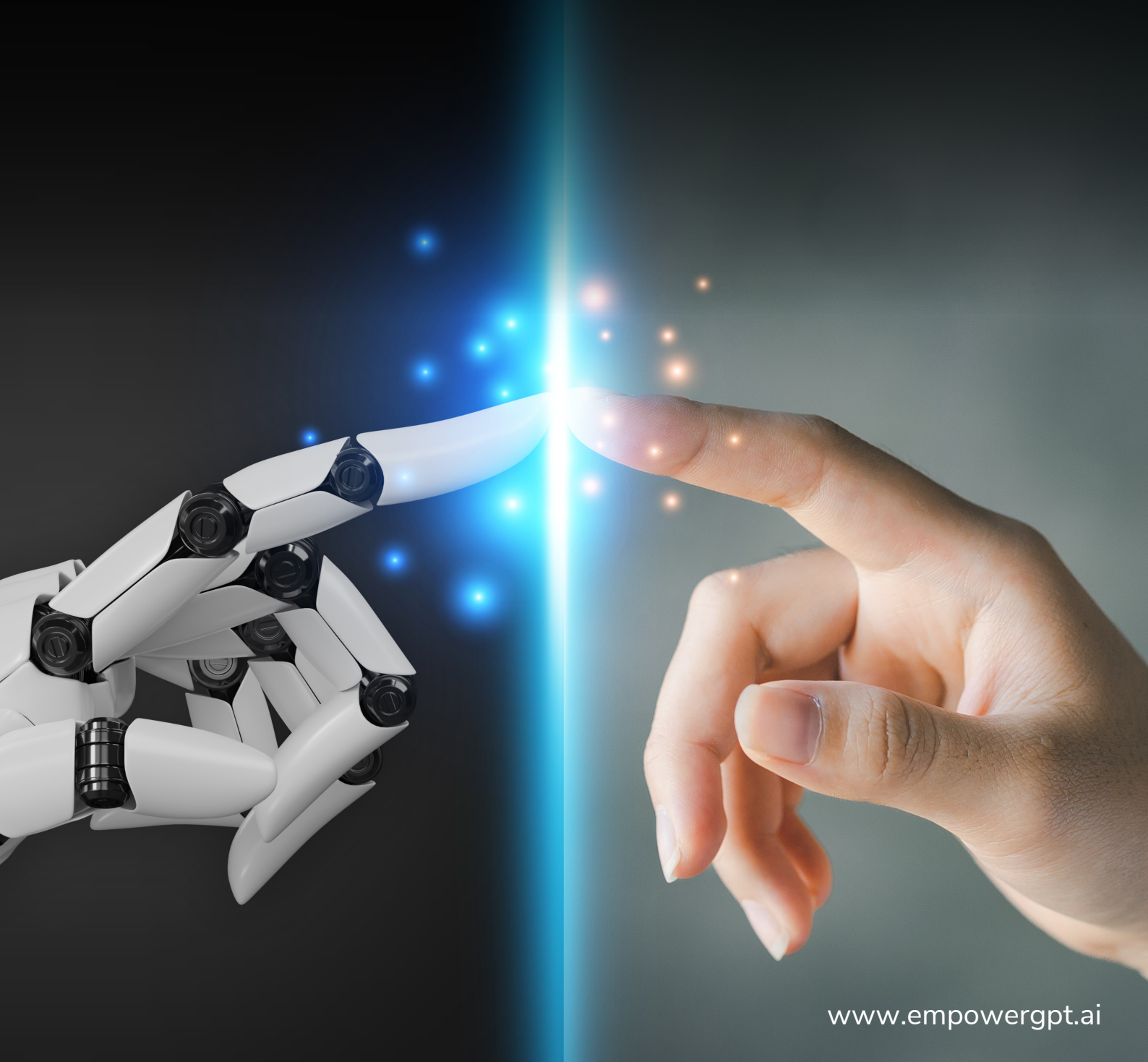

40% More Productivity, Unlimited Innovation:

Rethinking Leadership for the AI Era



"AI won't replace humans; humans with AI will replace humans."

-Karim Lakhani, Professor at Harvard Business School

This guide is a practical reference to help business leaders and professionals understand and leverage the latest in AI technology – specifically, Generative AI and Large Language Models (LLMs). Use it to explore the potential of AI in solving complex business challenges, enhancing productivity, and driving innovation.

What has happened recently?

This guide is a practical reference designed to help executives and professionals understand and leverage the latest AI technologies, especially Generative AI and Large Language Models (LLMs). Let's take a closer look at the potential of AI in solving complex business challenges, increasing productivity, and driving innovation.

The Rise of Generative AI

AI has been evolving at an incredible pace! In recent months, models like OpenAI's o3-Mini, Google's Gemini 2.0, Anthropic's Claude 3.5, and NVIDIA's Nemotron-4 have been pushing the boundaries of what's possible. DeepSeek also made headlines with its groundbreaking model, DeepSeek-V2, impressing everyone with its reasoning and low budget training.

From crafting text to coding to designing, Generative AI has become a game-changer, helping businesses save time, cut costs, and speed up workflows. But we're now entering an even more exciting phase – the dawn of Agentic AI. This next evolution of GenAI goes beyond assistance, enabling AI to take initiative, automate complex tasks, and drive decision-making like never before.



Challenges for Businesses: Overview and Context

Overview and Context

Valuable information is scattered across departments, making it difficult to locate and access relevant data.

Inefficient Search

Traditional search methods are ineffective at retrieving specific information from unstructured datasets.

Talent Shortage Due to Retirements

35% of employees from the Baby Boomer generation in German companies are approaching retirement, exacerbating the talent gap.

Data Overload

Managing and extracting insights from vast amounts of unstructured data is time-consuming.

Inaccurate Decision-Making

Limited access to relevant information hinders accurate and informed decision-making.

AI Lead of the USA and China

The USA and China have gained competitive advantages through AI dominance, putting German companies at risk of falling behind their international competitors.

Steigende Kosten und eine stagnierende Wirtschaft setzen viele deutsche Unternehmen unter Druck, ihre internen Wertschöpfungsprozesse zu hinterfragen und zu modernisieren.

Large Language Models (LLMs)

LLMs are a type of AI system that can understand and generate human language. They're the brains behind many AI platforms, from chatbots to content generators. However, they aren't without their faults.

Core Capabilities

LLMs excel in tasks that require context understanding, multilingual processing, and data-driven insights, making them valuable for companies worldwide.

Limitations of LLMs



Hallucinations

LLMs sometimes generate confident-sounding answers that are factually wrong.



Data Security

Sharing sensitive business data can pose risks, including potential exposure of confidential information.



The Fine-Tuning vs. RAG Dilemma

Fine-Tuning

Fine-tuning involves retraining models with new data but is often costly and resource-heavy.

RAG (Retrieval-Augmented Generation):

RAG is a cost-effective alternative that allows real-time access to external data, improving information relevance without retraining. RAG retrieves and ranks relevant information from data sources, combining it with the model's existing knowledge.

An AI platform to maximize productivity and accelerate creative innovation!

Why EmpowerGPT?

EmpowerGPT combines Generative AI and RAG to offer an innovative AI solution for modern business to boost productivity. It automates repetitive tasks, fills the talent gap, and supports employees in making faster, better decisions. Your organization will stay productive, innovative and competitive by empowering your workforce with our secure AI platform.

Organizations spend 19.8% of their working hours just searching for and gathering information. That's more than nine hours per week per employee
- McKinsey

The Five Pillars of EmpowerGPT



Access & Processing of Business Knowledge

- ▶ Provides access to both internal company knowledge and global knowledge for informed decision-making.
- ▶ Automatically forwards results based on your company's preferences.



Automation & Efficiency

- ▶ Reduces routine tasks by up to 40% by Mini-Experts and AI Assistants, allowing employees to focus on strategic work.
- ▶ Boosts productivity through automated workflows and process management.



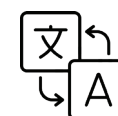
Intelligent Enterprise Search

- ▶ Instantly finds emails, documents, and files from integrated sources like SharePoint, Outlook, Google Drive, and internal databases.
- ▶ Goes beyond keyword search—understands context to surface the most relevant results, saving time and effort.



Security & Data Privacy

- ▶ Ensures the protection of sensitive business data with GDPR-compliant security.
- ▶ Provides a secure platform for accessing internal and external knowledge.



Multilingual Collaboration

- ▶ Enables collaboration across language and regional barriers with cross-lingual AI capabilities.
- ▶ Facilitates knowledge sharing within international teams to enhance global efficiency.

Eine Gartner-Umfrage von 2022 zeigt: 80% der Führungskräfte glauben, dass Automatisierung auf jede Geschäftsentscheidung angewendet werden kann.

Practical Use Cases for Immediate Impact



Customer Support

Provides personalized learning paths and materials for better customer service.



R&D Acceleration

Innovates at the speed of AI with quick access to essential data.



Maintenance & Sustainability

Implements AI-predictive strategies for operational continuity.



Quality & Compliance

Navigates regulations with AI precision to ensure compliance.



Onboarding & Training

Supports continuous employee development with tailored training.



Query Disparate Data

Integrates digital & non-digital data, enabling comprehensive insights and streamlined analysis.



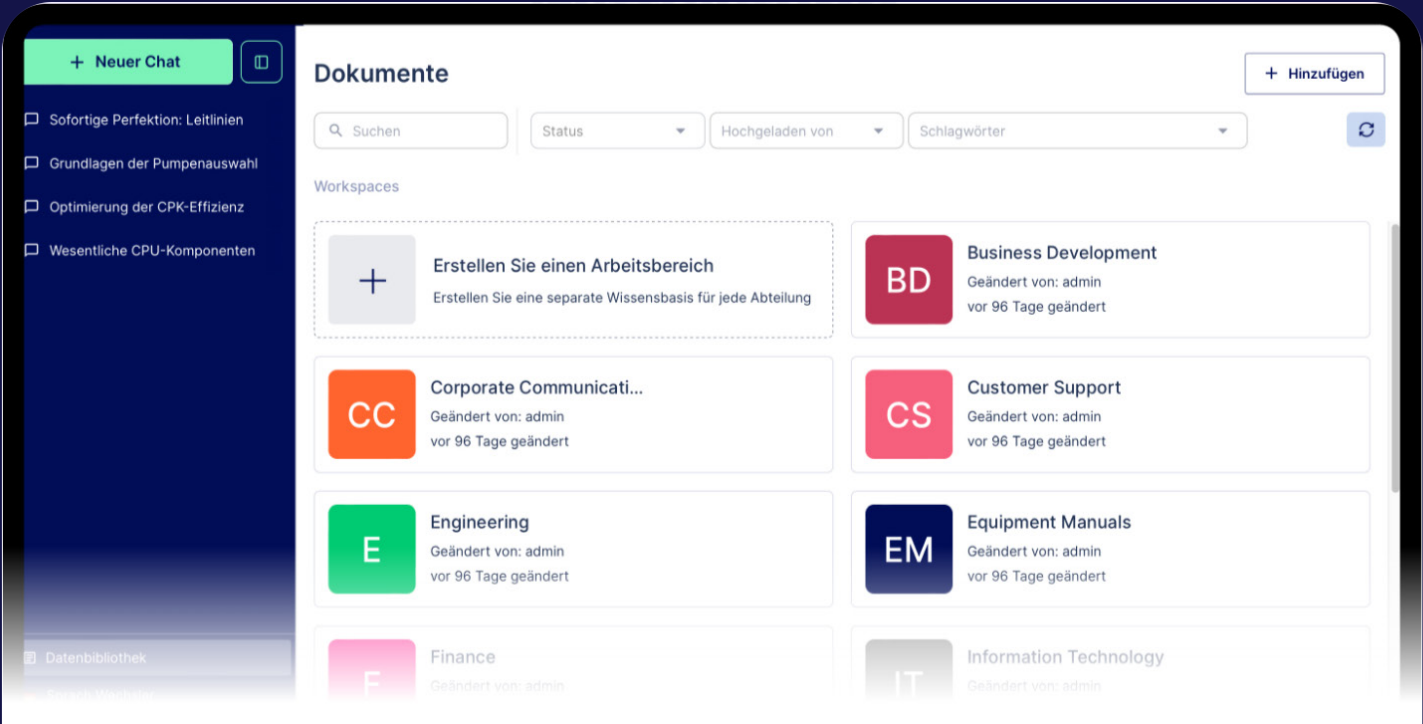
Documentation Clustering

Facilitates team collaboration with secure workspaces through RBAC (Role-based access control).



Workflow Automation

Automates the creation of reports, multilingual documents, and communications.



Security and Compliance

Your data stays within the EU, where EmpowerGPT's AI models are hosted. The platform utilizes AES-256 encryption and complies with GDPR and SOC 2 security standards to ensure maximum data protection.

Seamless Integrations & No Vendor Lock-In

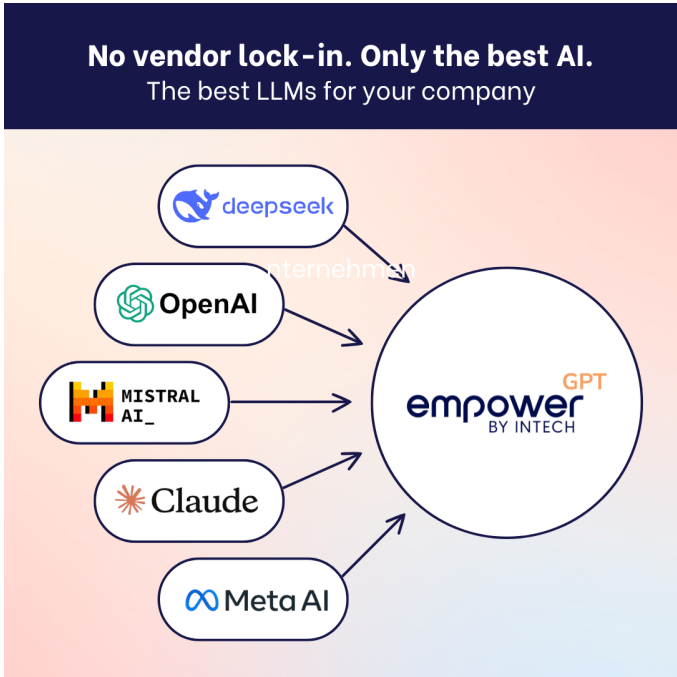
EmpowerGPT fits right into your workflow, integrating with the tools you already use—no disruptions, just seamless AI-powered efficiency.

Works Where You Work

- **Docs & Storage:** OneDrive, Google Drive, SharePoint, Dropbox
- **Collaboration:** Teams, Slack, Confluence
- **CRM & E-Mails:** Salesforce, Outlook, Gmail
- **Enterprise Search:** Instantly find files, emails, and messages across platforms
- ...and more integrations to come!

No Vendor Lock-In – Full AI Model Flexibility

- Supports OpenAI's latest models (including o3-Mini), DeepSeek's latest models (such as DeepSeek-R1), LLaMA, Claude, Mistral, and Command R+
- Always ahead – Any new safe, secure, and efficient LLMs, EmpowerGPT will be the first to adopt
- Deploy on-cloud, on-premises, or hybrid – your data, your control



EmpowerGPT adapts to your tech, not the other way around. Future-proof your AI strategy with seamless integrations and total flexibility.

The AI era waits for no one. The time to get started is now.

Request your personal demo on our website today and experience how EmpowerGPT can revolutionize your organization.

Contact us!

INTECH Automation & Intelligence GmbH

Malik Naveed Akram
Managing Director

naveed.akram@intechwww.com
+49 173 3576691, +49 89 14379966

Moosacher Strasse 82a,
München 80809, Deutschland

INTECH
AUTOMATION · INTELLIGENCE

Enabling Your Business Evolution

For 30 years, INTECH has been helping industrial businesses enhance process visibility, control, and reliability in their industrial plants and assets. Now, in a rapidly evolving digital world, we are here to partner with you in bringing out the best your facilities have to offer through full enterprise visibility and AI-based insights and analytics



ارامكو السعودية
Saudi Aramco



tabreed



About INTECH Process Automation

We have been the automation partner of choice for major oil & gas, petrochemical, and power companies around the world; and as the world moves towards Industry 4.0, we help businesses with their digital transformation and adoption of Industrial IoT technologies



13 Offices
Around the
World



750+
Global
Employees



Projects
in over 40
Countries



2000+
Projects
Since 1991

Global Headquarters

INTECH Process Automation Inc.
1400 Broadfield Blvd., suite 310,
Houston TX 77084, USA
Tel: +1 713 849 1000
Fax: +1 713 856 0785

www.intechwww.com
marketing@intechwww.com