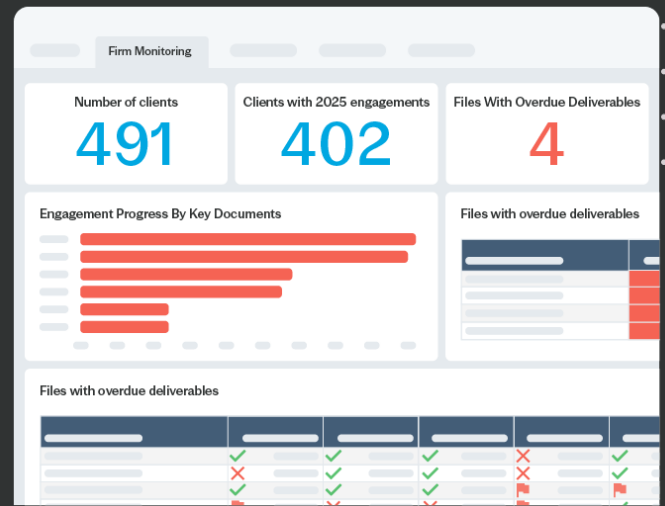


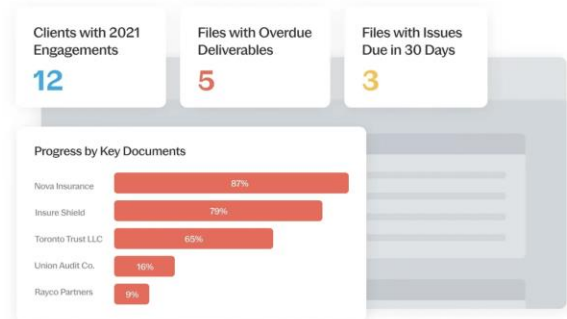
Caseware Sherlock

Provides firms with powerful insights based on engagement, staff and client metrics to uncover valuable trends and insights.



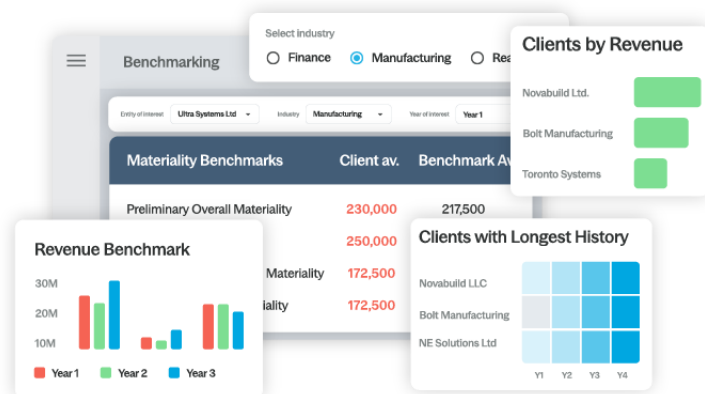
See Across Your Entire Firm

Get a clear, comprehensive view of project progress, overdue deliverables and bottlenecks to make more informed decisions.



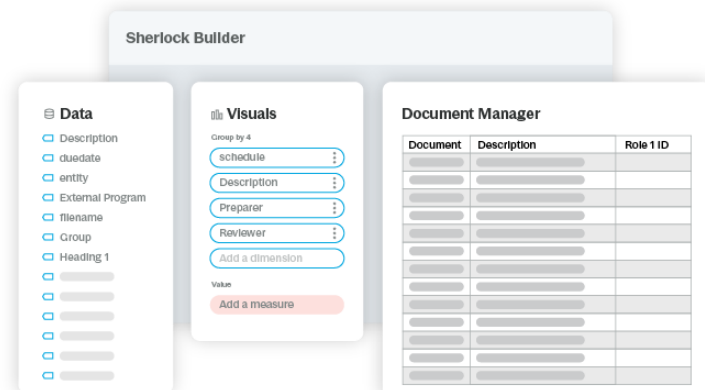
Generate Data-Driven Insights

Review your clients' financial metrics and materiality thresholds against peer benchmarks to assess risk and outliers.



Adapt Visualizations to Your Unique Needs

Easily create custom dashboards and visualizations through drag and drop or integrate with the BI tools you already use via Sherlock APIs.



Start using Caseware Sherlock today

Extract Your Data

Sherlock automates the process of extracting your engagement data and loading it into a centralized database.

Explore Pre-built Dashboards

Gain instant insights with pre-built dashboards that show what's happening across your firm.

Customize Dashboards

Tailor Sherlock's dashboards to your firm's specific needs using an intuitive drag-and-drop interface.

Benchmark and Analyze

Use built-in analytics to compare client data against industry benchmarks.

Integrate With Existing Tools

Feed engagement metadata into existing tools like Power BI and Tableau with Sherlock's robust APIs to build firmwide reporting ecosystems.



Issues

Trial Balance

Metadata

Account Summary

Documents

Engagement Properties



Caseware is the leading global provider of cloud-enabled solutions for audit, assurance, financial reporting and data analytics for accounting firms, corporations and government regulators. Caseware's innovative tools and platforms help more than half a million users in 130 countries work smarter, dig deeper and see further as they transform insights into impact. For more information, visit caseware.com.