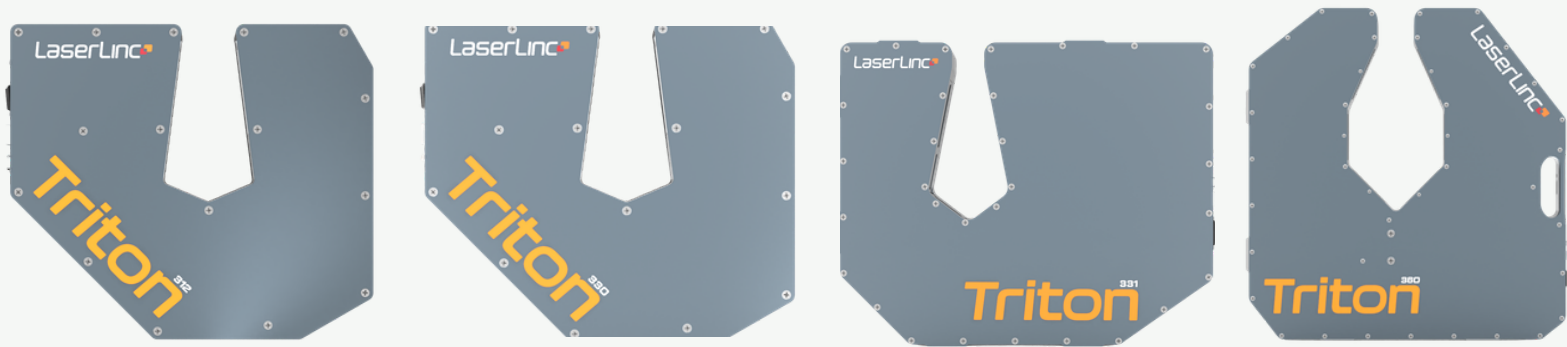


# **Laser Micrometers**

**In and off-line Laser Measurement  
Systems**

[laserlinc.com/products/laser-micrometers/](http://laserlinc.com/products/laser-micrometers/)

Triple-Axis Measurement Parameters	3
Dual-Axis Measurement Parameters	4
Single-Axis Measurement Parameters	5-6
SmartLinc Measurement Parameters	7
Roller Accessories	8
Roller Guide Accessories	9-11
V-Block Accessories	12
Feed Through Accessories	13
Encoder Accessories	14
Window Guard Accessories	15
Air Purge Accessories	16
Dual Mount	17
Triple Mount	18
Specialty Fixture	19
Stand Accessory	20
Common Line Setup	21
Extended Part Number List	22-33



## Triple-Axis Measurement Parameters

Model	Triton312	Triton330	Triton331	Triton360
<b>Measurement Range</b>	0.102mm – 11.4mm [0.004" - 0.45"]	0.102mm – 29.2mm [0.004" - 1.15"]	0.254mm – 27.2mm [0.010" - 1.07"]	0.406mm – 52.6mm [0.016" - 2.07"]
<b>Measurement per second (HZ)</b>	1800 [600 per axis] LE= 450 [150 per axis]	900 [300 per axis] LE=225 [75 per axis]	4800 [1600 per axis] 12000 [4000 per axis] (optional)	4800 [1600 per axis] 12,000 [4000 per axis] (optional)
<b>Gate Size</b>	12mm [0.47"]	30mm [1.18"]	30mm [1.18"]	60mm [2.36"]
<b>Repeatability Unaveraged</b>	±0.0001" [±2.5µm]	±0.0001" [±2.5µm]	±0.0008" [±20µm]	±0.0012" [±30µm]
<b>Repeatability 2 Second Avg</b>	±0.000005" [±0.125µm]	±0.000005" [±0.125µm]	±0.000005" [±0.125µm]	±0.00002" [±0.5µm]
<b>Positional Error</b>	±0.0001" [±2.5µm]	±0.0001" [±2.5µm]	±0.0001" [±2.5µm]	±0.0002" [±5µm]
<b>Approximate Dimensions [H x W x D]</b>	247.7mm x 254mm x 31.8mm / [9.75" x 10" x 1.25"]	247.7mm x 254mm x 31.8mm / [9.75" x 10" x 1.25"]	335.3mm x 393.7mm x 50.8mm / [13.2" x 15.5" x 2"]	541mm x 520.7mm x 50.8mm / [21.3" x 20.5" x 2"]
<b>Approximate Weight</b>	4.17kg [9.2lbs]	4.17kg [9.2lbs]	10kg [22lbs]	18.6kg [41lbs]



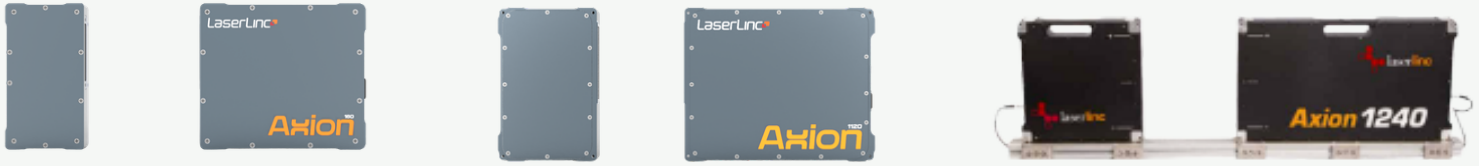
## Dual-Axis Measurement Parameters

Model	Axion203	Axion222	Axion230	Axion260	Axion2120
<b>Measurement Range</b>	0.04mm -2mm [0.00158"-0.079"]	0.076mm - 21.6mm [0.003"-0.85"]	0.178mm – 29.2mm [0.007" - 1.15"]	0.406mm – 56mm [0.016" - 2.2"]	0.7mm – 114mm [0.028" - 4.5"]
<b>Measurement per second (HZ)</b>	2400 [1200 per axis]	800 [400 per axis] LE= 300 [100 per axis]	3200 [1600 per axis] 8000 [4000 per axis] (optional)	3200 [1600 per axis] 8000 [4000 per axis] (optional)	3200 [1600 per axis] 8000 [4000 per axis] (optional)
<b>Gate Size</b>	2.9mm [0.114"]	23.1mm [0.91"]	30mm [1.18"]	60mm [2.36"]	120mm [4.72"]
<b>Repeatability Unaveraged</b>	±2.5µm [±0.0001"]	±2.5µm [±0.0001"]	±10µm [±0.0004"]	±28µm [±0.0011"]	±56µm [±0.0022"]
<b>Repeatability 2 Second Avg</b>	±0.025µm [±0.000001"]	±0.125µm [±0.000005"]	±0.125µm [±0.000005"]	±0.25µm [±0.00005"]	±1.0µm [±0.00004"]
<b>Positional Error</b>	±0.25µm [±0.00001"]	±2.5µm [±0.0001"]	±2.5µm [±0.0001"]	±5µm [±0.0002"]	±10µm [±0.0004"]
<b>Approximate Dimensions [H x W x D]</b>	177.8mm x 168.3mm x 47.3mm / [7" x 6.625" x 1.863"]	149.9mm x 259mm x 31.8mm / [5.9" x 10.2" x 1.25"]	275.6mm x 320mm x 38.1mm / [10.85" x 12.6" x 1.5"]	368.3mm x 406.4mm x 44.5mm / [14.5" x 16" x 1.75"]	558.8mm x 539.7mm x 50.8mm / [22" x 21.13" x 2"]
<b>Approximate Weight</b>	2.7kg [6lbs]	2.27kg [5lbs]	14.5kg [10lbs]	9.53kg [21lbs]	18.37kg [40.5lbs]



## Single-Axis Measurement Parameters

Model	Axion103	TLAser122	TLAser122s	Axion130
<b>Measurement Range</b>	0.015mm –2.2mm [0.0006" - 0.086"]	0.038mm –22mm [0.0015" - 0.866"]	0.076mm – 22mm [0.003" - 0.866"]	0.178mm – 29.2mm [0.007" - 1.15"]
<b>Measurement per second (HZ)</b>	1200	400 or LE = 100	400 or LE = 100	1600 4000 (optional)
<b>Gate Size</b>	2.9mm [.114"]	23.1mm [.91"]	23.1mm [.91"]	30mm [1.18"]
<b>Repeatability Unaveraged</b>	±1.25µm [±0.00005"]	±2.5µm [±0.0001"]	±2.5µm [±0.0001"]	±10µm [±0.0004"]
<b>Repeatability 2 Second Avg</b>	±0.025µm [±0.000001"]	±0.125µm [±0.000005"]	±0.125µm [±0.000005"]	±0.25µm [±0.00001"]
<b>Positional Error</b>	±0.25µm [±0.00001"]	±2.5µm [±0.0001"]	±2.5µm [±0.0001"]	±2.5µm [±0.0001"]
<b>Approximate Dimensions [H x W x D]</b>	110mm x 209mm x 47mm / [4.345" x 8.24" x 1.862"]	106.7mm x 259mm x 32.3mm / [4.2" x 10.2" x 1.27"]	Transmitter: 107mm x 135mm x 32mm / [4.2" x 5.3" 1.25"]  Receiver: 92mm x 76.2mm x 31.8mm / [3.62" x 3" x 1.25"]	Transmitter: 146mm x 222.3mm x 38.6mm / [5.75" x 8.75" x 1.52"]  Receiver: 146mm x 101.6mm x 38.6mm / [5.75" x 4" x 1.52"]
<b>Approximate Weight</b>	2.04kg [4.5lbs]	1.45kg [3.2lbs]	1.45kg [3.2lbs]	3.17 kg [7lbs]



## Single-Axis Measurement Parameters

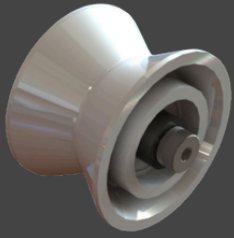
Model	Axion160	Axion1120	Axion1240
<b>Measurement Range</b>	0.254mm – 58mm [0.010" - 2.3"]	0.711mm – 116mm [0.028" - 4.55"]	0.914mm – 231mm [0.036" - 9.1"]
<b>Measurement per second (HZ)</b>	1600 4000 (optional)	1600 4000 (optional)	1600 (high-speed option not available)
<b>Gate Size</b>	60mm [2.36"]	120mm [4.72"]	240mm [9.45"]
<b>Repeatability Unaveraged</b>	±25µm [±0.0010"]	±0.051mm [±0.002"]	±0.1mm [±0.004"]
<b>Repeatability 2 Second Avg</b>	±0.5µm [±0.00002"]	±1.0µm [±0.00004"]	±2.0µm [±0.00008"]
<b>Positional Error</b>	±5µm [±0.0002"]	±10µm [±0.0004"]	±20µm [±0.0008"]
<b>Approximate Dimensions [H x W x D]</b>	Transmitter: 191mm x 216mm x 51mm / [7.5" x 8.5" x 2"]  Receiver: 191mm x 102mm x 51mm / [7.5" x 4" x 2"]	Transmitter: 266.7mm x 330.2mm x 40.4mm / [10.5" x 13" x 1.59]  Receiver: 266.7mm x 171.5mm x 40.4mm / [10.5" x 6.75" x 1.59"]	Transmitter: 577.9mm x 317.5mm x 74.9mm / [22.75" x 12.5" x 2.95"]  Receiver: 317.5mm x 317.5mm x 74.9mm / [12.5" x 12.5" x 2.95"]
<b>Approximate Weight</b>	4.08kg [9lbs]	9.5kg [21lbs]	40.4kg [89lbs]



## SmartLinc Measurement Parameters

Model	Processor Box	Display	Display+
<b>Communication Protocols (Output)</b>	<ul style="list-style-type: none"> <li>• RS-232 Serial Out</li> <li>• TCP/IP Data Server</li> <li>• UDP</li> <li>• Siemens S7</li> <li>• Modbus TCP</li> <li>• OPC UA</li> <li>• Read/Write Allen Bradley Controller Tags with Ethernet/IP</li> </ul>	N/A	<ul style="list-style-type: none"> <li>• TCP/IP Data Server</li> <li>• UDP</li> <li>• Siemens S7</li> <li>• Modbus TCP</li> <li>• OPC UA</li> <li>• Read/Write Allen Bradley Controller Tags with Ethernet/IP</li> </ul>
<b>Communication Protocols (Input)</b>	Read/Write Allen Bradley Controller Tags with Ethernet/IP	N/A	Read/Write Allen Bradley Controller Tags with Ethernet/IP
<b>Compatibility</b>	LaserLinc NetLinc micrometers & LaserLinc Legacy interface micrometers with Deluxe option	LaserLinc NetLinc interface micrometers	LaserLinc NetLinc interface micrometers
<b>Power Requirement</b>	230W, 100-240VAC, & 50-60Hz	POE + 30W	POE + 30W
<b>Approximate Dimensions [H x W x D]</b>	81.2mm x 304.8mm x 188mm [3.2" x 12" x 7.4"]	234.6mm x 222.3mm x 72.5mm / [9.2" x 8.8" x 2.9"]	234.6mm x 222.3mm x 72.5mm / [9.2" x 8.8" x 2.9"]
<b>Approximate Weight</b>	2.26kg [5lbs]	2kg [4.5lbs]	2kg [4.5lbs]

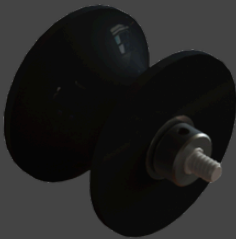
01



**V-Roller:** Mounted roller that guides round product through the manufacturing process, providing accurate alignment of the product.

- **Size ranges:** between 4.8mm [0.188"] to 63.5mm [2.50"]
- **Materials:** Aluminum, Black and White Delrin, Ceramic, Plastic, and Stainless Steel
- **Part Numbers:** 0230-1104-01, 0260-1100-01, 1000-1137-01, 2000-1315-03, 1000-1134-01, 0022-2205-01, 0030-1103-01, 0030-1104-01, 1000-1129-01, 0412-1106-01, 1000-1132-01, 0230-1105-01, 1000-1135-01, 1000-1131-01, 0412-1105-01, 0430-1102-01, 1000-1133-01, 1000-1136-01

02



**U-Roller:** Mounted roller that guides round material in the manufacturing process keeping it center preventing side to side movement.

- Comes in size 25.4mm [1.00"]
- **Product Application:** 122, 222, 330, 312, 230, 331
- **Part Number:** 0330-1101-01

01



**Throat Mount Roller Guide:** Supports tube and wire products as they move through the throat of the micrometer, ensuring centered feeding of the product.

- **Product Applications:** Axion103, Axion203, Axion222, and TLAser122

[CLICK HERE TO VIEW ALL AVAILABLE PART NUMBERS](#)

02



**Manual Adjust Mount Roller Guide:** Supports tubes and wire as they move through the throat of the micrometer, allowing the operator to manually adjust the roller position for different alignments or sizes of material.

- **Product Application:** TLAser122, Axion222, Axion260, Axion2120, Triton331, Triton360, Triton312, Triton330

[CLICK HERE TO VIEW ALL AVAILABLE PART NUMBERS](#)

03



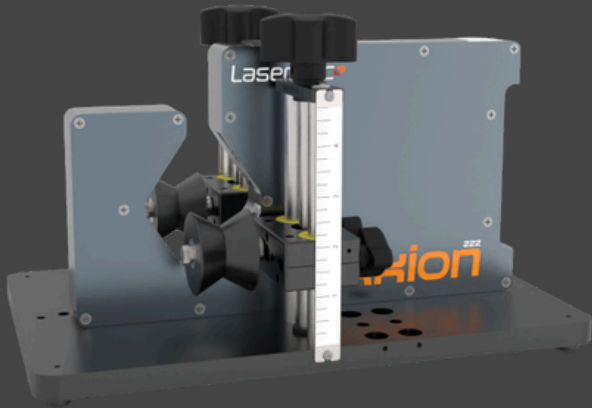
**Body Mount Roller Guide:** Supports tubes and wires as they go through the throat of the micrometer and is attached directly to the machine body facing in a left or right orientation.

- **Product Applications:** 312 - 2120 and Triton

[CLICK HERE TO VIEW ALL AVAILABLE PART NUMBERS](#)

## Roller Guide Accessories

01

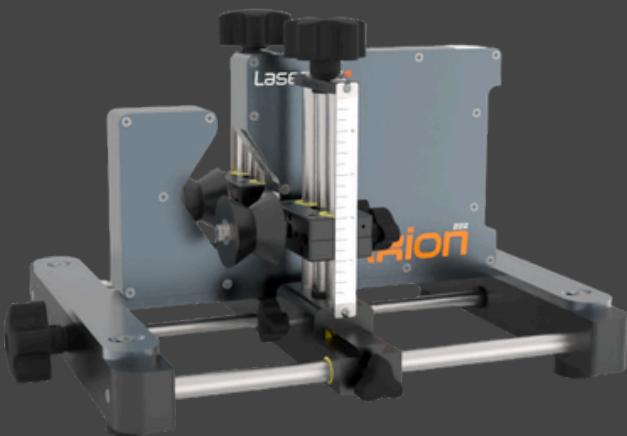


**Plate Mount Roller Guide:** Supports tubes and wires as they go through the throat of the micrometer and is secured to the base of the micrometer.

- **Product Applications:** 203 - 331

[CLICK HERE TO VIEW ALL AVAILABLE PART NUMBERS](#)

02



**Horizontal-Vertical Adjust Roller Guide:** Supports tubes and wires, allowing an operator to manually adjust the guide horizontally and vertically for precise alignment, with dual mounting capabilities.

- **Product Applications:** 122, 222, 230, 312, 330, 331..Also available with dual mount

[CLICK HERE TO VIEW ALL AVAILABLE PART NUMBERS](#)

03



**Metron-R Roller Guide:** Roller Guide made specifically for the Metron-R, allowing for precision adjustments.

- **Product Applications:** Metron-R
- 222, 330, 312, 230

[CLICK HERE TO VIEW ALL AVAILABLE PART NUMBERS](#)

## Roller Guide Accessories

01



**Rail Mount Roller Guide:** A Guide that supports tube and wire that mounts onto a rail track system for easy adjustments.

- **Product Applications:** Axion130, Axion160, Axion1120, TLAser122s

[CLICK HERE TO VIEW ALL AVAILABLE PART NUMBERS](#)

**2-Way Rail Mount Roller Guide:** A Guide that supports tube and wire, which supports adjustment in two directions.

- **Product Applications:** TLAser122s

[CLICK HERE TO VIEW ALL AVAILABLE PART NUMBERS](#)



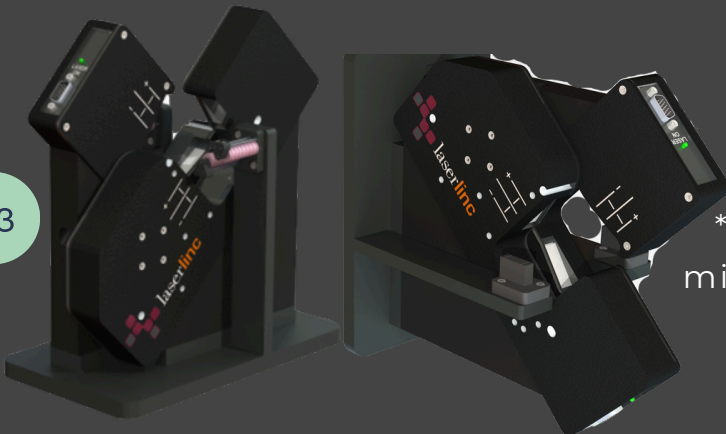
02

**Horizontal Multistrand Roller Guide:** A guide that supports multiple strands of wire or tube and adjusts its position along the horizontal axis to ensure precise alignment.

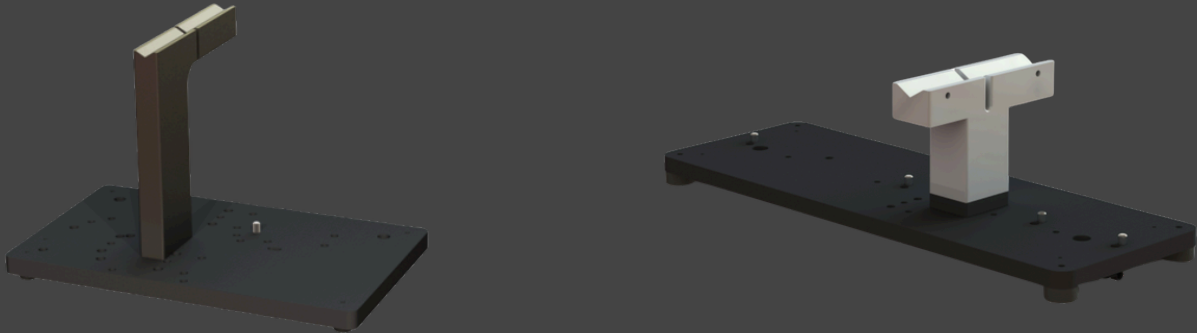
- **Product Applications:** TLAser122  
\*Multistrand roller guides available for all micrometer models except x03 upon request

[CLICK HERE TO VIEW ALL AVAILABLE PART NUMBERS](#)

03



01

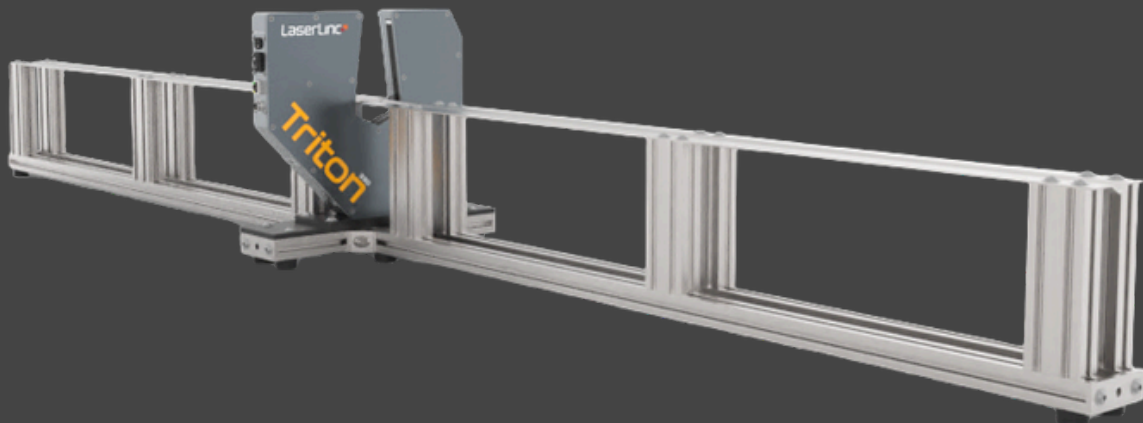


**V-Block Fixture:** Used to hold round pieces during inspection, the V-shaped grooves center the product, allowing for precise positioning and stability.

- **Product application:** TLaser122, Axion130, Axion160, Axion203, Axion222, Axion260, Triton312, Triton330, Triton360
- **Materials:** Stainless Steel

[CLICK HERE TO VIEW ALL AVAILABLE PART NUMBERS](#)

02

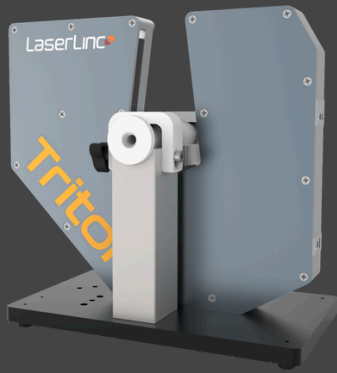


**Long V-Block Fixture:** Used to hold round pieces during inspection, the V-shaped grooves center larger products that are cut to size during the manufacturing process, allowing for precise positioning and stability.

- **Materials:** Stainless Steel V-Block with Aluminum Structure

[CLICK HERE TO VIEW ALL AVAILABLE PART NUMBERS](#)

01



**Feed Through Guides:** Centers and supports small flexible tubing. The guides are mounted to a V-Block and secured using adjustable clamps. Multiple guides can be purchased and swapped out to accommodate a range of sizes.

- **Product application:** TLaser122, Axion222, Axion230, Triton312, Triton330
- **Materials:** White PLA
- **Add-on Guide Clamp Part Number:** 0330-0000-25 (For all models)
- **Guide Part Numbers:**

<b>TLaser122 Axion222</b>	<b>Axion230 Triton330</b>	<b>Triton312</b>
Hole Size 1.27mm [0.050"] to 15.875 mm [.625"] Set of 2	Hole Size 1.27 mm [0.050"] to 19.05 mm [0.75"] Set of 2	Hole Size 1.27 mm [0.050"] to 9.53mm [0.375] Set of 2

[CLICK HERE TO VIEW ALL AVAILABLE PART NUMBERS](#)

01



**Right and Left Encoder Mounted Roller Guide Add-On:** Attachment for a roller guide that provides real-time feedback on your extrusion process.

- **Product Application:** Available for all roller guide models except x03

[CLICK HERE TO VIEW ALL AVAILABLE PART NUMBERS](#)

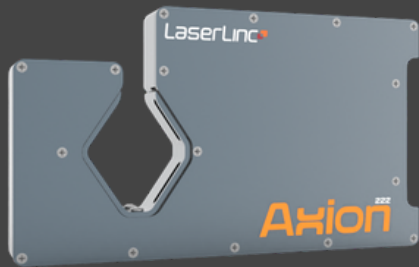
02



**Roller Guide Encoder Mount:** Attachment for a roller guide that holds an encoder that attaches to the roller guide for larger micrometers.

- **Product Application:** All Micrometers except Axion103 and Axion203  
\*currently available models are for TLAser230, Axion2120, Triton330 all other models are made to order

[CLICK HERE TO VIEW ALL AVAILABLE PART NUMBERS](#)

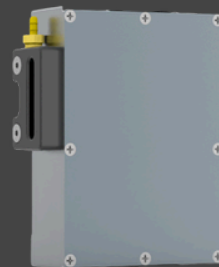
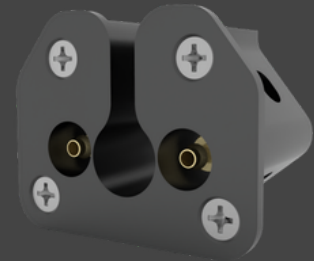


**Window Guards:** Protect the laser micrometer from dust, debris, and damage without interfering with measurement accuracy.

- **Product Application:** TLAser122, TLAser122s TLAser130, Axion160, Axion222, Axion230, Axion260, Axion1120, Axion2120, Triton330-312, Triton331, Triton360

[CLICK HERE TO VIEW ALL AVAILABLE PART NUMBERS](#)

## Air Purge Accessories



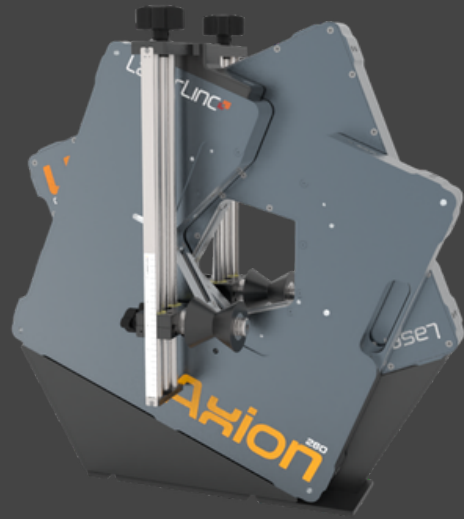
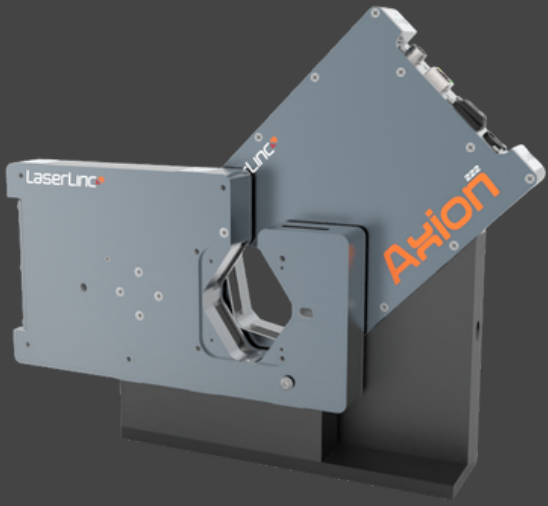
**Air Purges:** Delivers a steady flow of clean air to keep the laser micrometer lenses free from dust and contaminants.

\*Oil free air compressor required.

- **Product Application:** TLAser122, TLAser122s Axion103, Axion130 Axion160, Axion203, Axion222, Axion230, Axion260, Axion1120, Axion1240, Axion2120, Triton330-312, Triton331, Triton360

[CLICK HERE TO VIEW ALL AVAILABLE PART NUMBERS](#)

## Dual Mounting

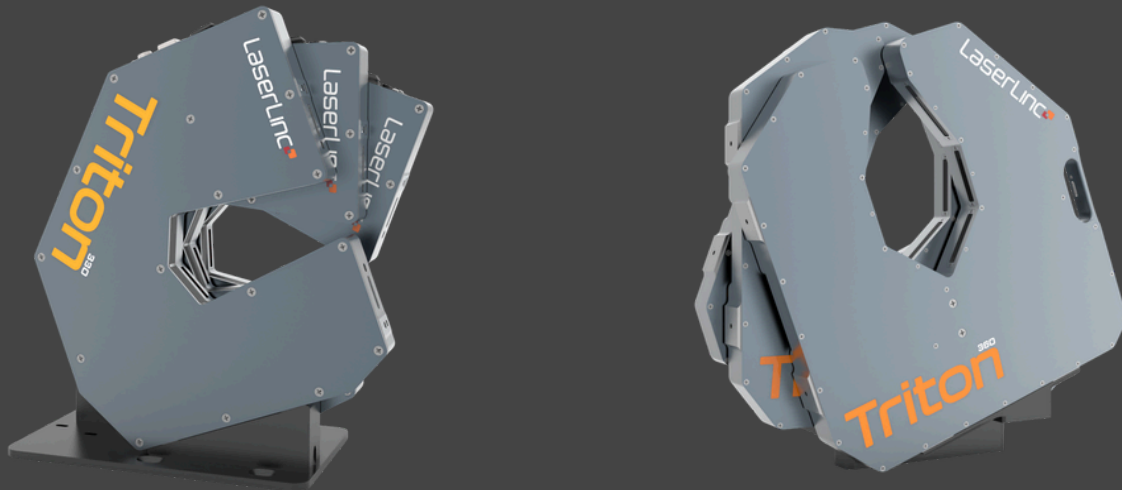


**Dual Mount Fixture:** Dual mount fixturing allows for two micrometers to be mounted at differing orientations to provide double the measurement area.

**Dual Mount Roller Guide:** Supports tubes and wires as they move through the throat of the micrometers.

- **Product Application:** Axion260, Triton330, Triton312, Triton331, Triton360, Axion2120

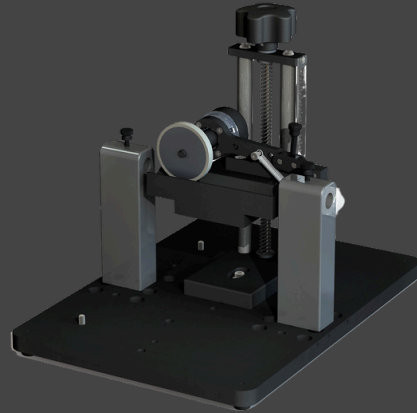
[CLICK HERE TO VIEW ALL AVAILABLE PART NUMBERS](#)



**Triple Mount:** Triple mount fixture allows for three micrometers to be mounted at differing orientations to provide triple the measurement area

- **Product Application:** Triton330, Triton360,

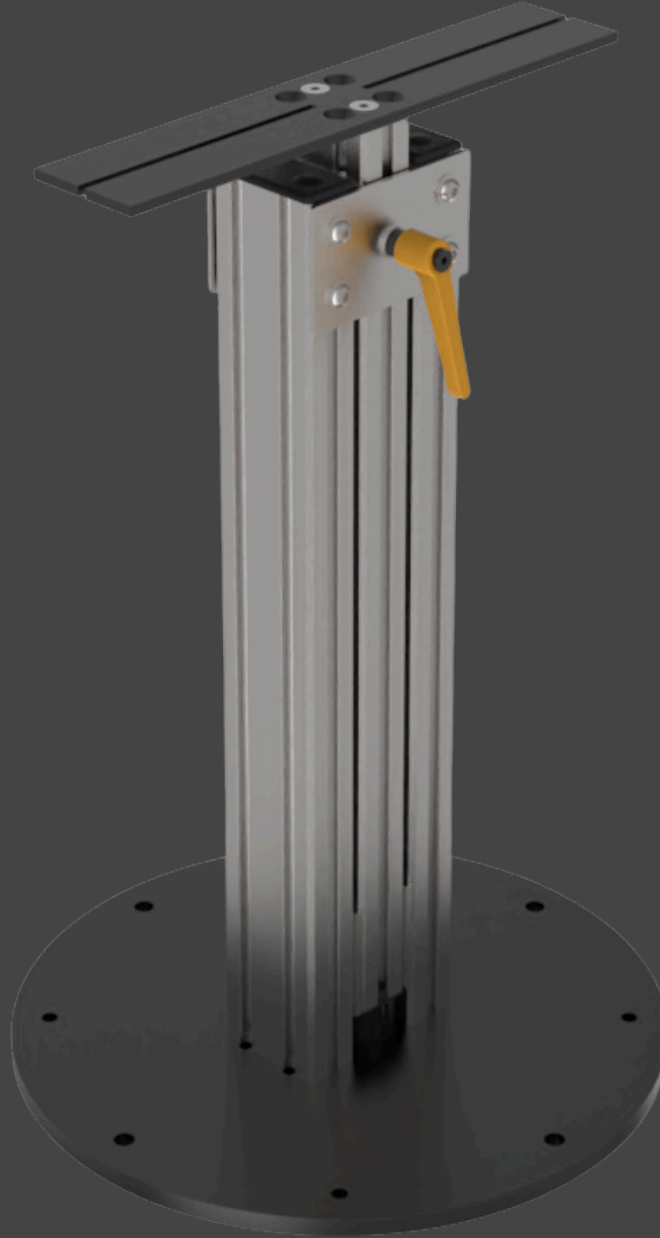
[CLICK HERR TO VIEW ALL AVAILABLE PART NUMBERS](#)



**Adjustable Feed Through V-Block with Encoder Fixture:** Benchtop fixture provides support for no-ridged manual part inspection while attached encoder provides real-time length feedback.

- **Product Application:** Compatible with Axion222 and Triton330/312
- Micrometer, V-block, and feedthrough guides sold separately

[CLICK HERE TO VIEW ALL AVAILABLE PART NUMBERS](#)

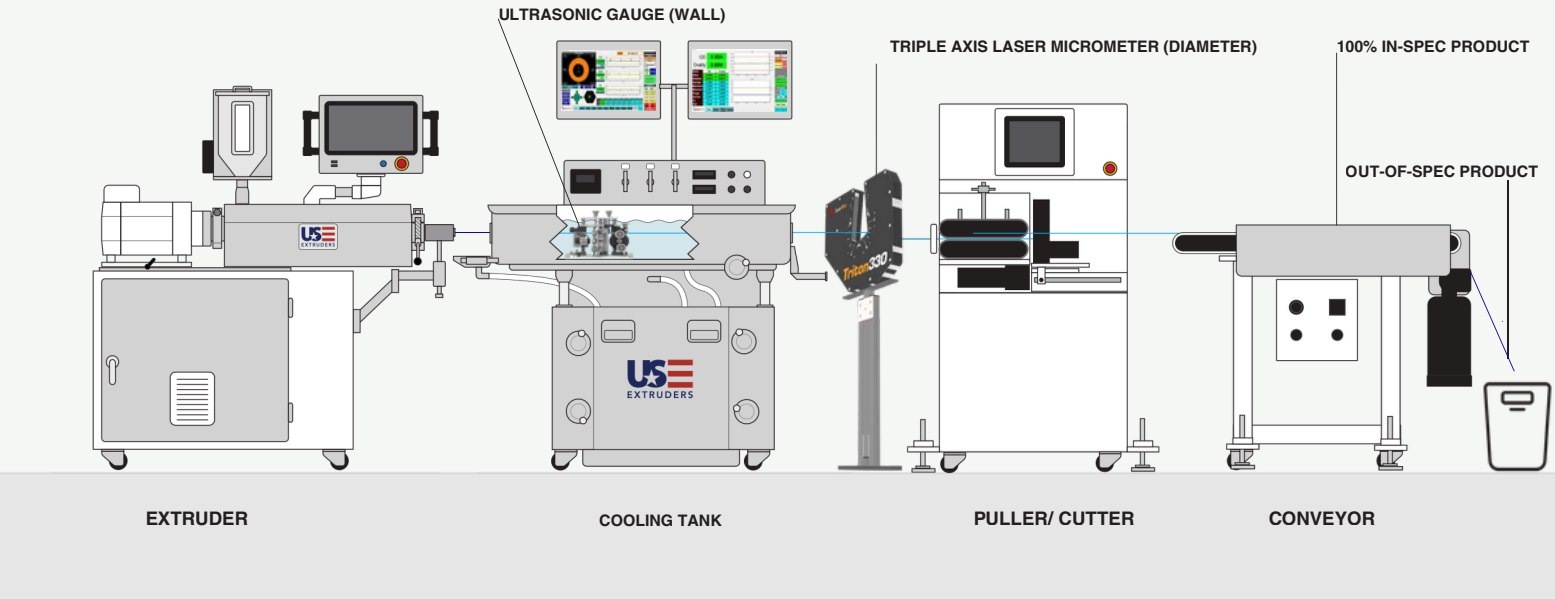


01

**Impact Resistant Laser Micrometer Stand:** Support and position laser micrometers with an adjustable base to ensure alignment of the micrometer to the extrusion line.

- **Product Application:** All Micrometers
- **Part Numbers:** 0200-0003-0028

## Common Line Setup:



### Throat Mount Roller Guide Part Numbers

#### Axion103 Part Numbers

0103-0000-60

#### Axion203 Part Numbers

203-0000-60

#### Axion222 Part Numbers

0222-0000-60

#### TLAser122 Part Numbers

0122-0000-60

### Manual Adjust Mount Roller Guide Part Numbers

#### TLAser122 Part Number

0122-0000-66

#### Triton312 Part Number

0200-0000-66

#### Axion222 Part Number

0222-0000-60

#### Triton330 Part Number

0200-0000-66

#### Axion230 Part Number

0200-0000-60

#### Triton331 Part Number

0331-0000-66

#### Axion260 Part Number

0260-0000-66

#### Triton360 Part Number

0360-0000-66

#### Axion2120 Part Number

2120-0000-66

### Body Mount Roller Guide Part Numbers

**Axion230 Part Number**  
1000-0000-61, 1000-0001-61

**Triton312 Part Number**  
1000-0000-61, 1000-0001-61

**Axion260 Part Number**  
1000-0002-61, 1000-0003-61

**Triton330 Part Number**  
1000-0000-61, 1000-0001-61

**Axion1120 Part Number**  
1000-0004-61

**Triton360 Part Number**  
1000-0002-61, 1000-0003-61

**Axion2120 Part Number**  
1000-0004-61

### Plate Mount Roller Guide Part Numbers

**TLAser122 Part Number**  
1000-0000-62

**Axion230 Part Number**  
1000-0001-62, 1000-0002-62

**Axion103 Part Number**  
1000-0003-62, 1000-0004-62

**Triton312 Part Number**  
1000-0001-62, 1000-0002-62

**Axion203 Part Number**  
1000-0003-62, 1000-0004-62,  
1000-0006-62

**Triton330 Part Number**  
1000-0001-62, 1000-0002-62

**Axion222 Part Number**  
1000-0005-62, 1000-0011-62

**Triton331 Part Number**  
1000-0007-62, 1000-0008-62

### Horizontal-Vertical Adjust Roller Guide Part Numbers

- **5-inch Roller Guide Part Number:** 1000-0000-63  
**Applicable Micrometers:** TLAser122 & Axion 222
- **6-inch Roller Guide Part Numbers:** 1000-0001-63  
**Applicable Micrometers:** Axion230 & Triton 312, 330, 331
- **9-inch Roller Guide Part Numbers:** 1000-0002-63  
**Applicable Micrometers:** Axion230 & Triton331
- **5.5-inch 45-degree Roller Guide Part Numbers:** 1000-0003-63  
**Applicable Micrometers:** Axion222
- **9-inch Dual Mount Roller Guide Part Numbers:** 1000-0000-66  
**Applicable Micrometers:** Axion 222, 230 & Triton 312, 330, 331

### Metron R Roller Guide Part Numbers

**Metron R Part Number**

1000-0000-84

**Axion222 Part Number**

1000-0000-84

**Axion230 Part Number**

1000-0000-84

**Triton312 Part Number**

1000-0000-84

**Triton330 Part Number**

1000-0000-84

### Rail Mount Roller Guide Part Numbers

**Axion130 Part Number**

0130-0000-62

**Axion1120 Part Number**

1120-0000-62

**Axion160 Part Number**

0160-0000-62

**TLAser122s Part Number**

5122-0000-62

### 2-Way Rail Mount Roller Guide Part Numbers

**TLAser122s Part Number**

5122-0000-61

### Horizontal Multistrand Roller Guide Part Numbers

**TLAser122 Part Number (Horizontal With Rollers)**

0122-0000-70

**TLAser122 Part Number (Vertical With Guides)**

0122-0001-29

### V-Block Fixture Part Numbers

**TLAser122 Part Number**

0122-0000-21

**Axion260 Part Number**

0260-0000-21

**TLAser122s Part Number**

5122-0001-21

**Triton312 Part Numbers**

0312-0000-21, 0312-0001-21,  
0312-0001-25

**Axion130 Part Number**

0130-0000-21

**Triton330 Part Numbers**

0330-0000-21, 0312-0001-21,  
0330-0003-21, 0312-0001-25

**Axion160 Part Number**

0160-0000-21

**Axion203 Part Number**

0203-0000-21

**Triton360 Part Numbers**

0360-0000-21

**Axion222 Part Number**

0222-0000-21, 0222-0001-25

### Long V-Block Fixture Part Numbers

**Triton330 Part Number**

0330-0003-21

### Feed Through Guide Part Numbers

#### x22 Part Numbers

0022-1100-25, 0022-1101-25, 0022-1102-25, 0022-1103-25, 0022-1104-25,  
0022-1105-25, 0022-1106-25, 0022-1107-25,

#### Triton312 Part Numbers

0312-1100-25, 0312-1101-25, 0312-1102-25, 0312-1103-25, 0312-1104-25, 0312-1105-25,  
0312-1106-25

#### Triton330 Part Numbers

0330-1100-25, 0330-1101-25, 0330-1102-25, 0330-1103-25, 0330-1104-25, 0330-1105-25,  
0330-1106-25, 0330-1107-25, 0330-1108-25

#### V-Block Feed-Through Guide Part Number

0330-0000-25

#### Axion230 Body Mount Feed-Through Fixture

0230-0000-25

#### Triton312 Plate Mount Feed-Through Fixture

0312-0000-25

**Right and Left Encoder Mounted Roller Guide Add-On Part Numbers**

**All Micrometers Except Axion103 Part Numbers**

1000-1104-86, 1000-1105-86

**Roller Guide Encoder Mount Part Numbers**

**All Micrometers Except Axion103 and Axion203 Part Numbers**

1000-0003-86, 1000-0002-86

**Axion2120 Part Numbers**

2120-0000-86

### Window Guard Part Numbers

**TLAser122 Part Number**

0122-0000-31

**Axion1120 Part Number**

1120-0000-31

**TLAser122s Part Number**

5122-0000-31

**Axion2120 Part Number**

2120-0000-31

**TLAser130 Part Number**

0130-0000-31

**Triton312 Part Number**

0300-0000-31

**Axion160 Part Number**

0160-0000-31

**Triton330 Part Number**

0300-0000-31

**Axion222 Part Number**

0222-0000-31

**Triton331 Part Number**

0331-0000-31

**Axion230 Part Number**

0230-0000-31

**Triton360 Part Number**

0360-0000-31

**Axion260 Part Number**

0260-0000-31

## Air Purge Part Numbers

### Air Purge Part Numbers

**TLAser122 Part Number**

0122-0000-30

**Axion230 Part Number**

0230-0001-30

**TLAser122s Part Number**

5122-0000-30

**Axion260 Part Number**

0260-0001-30

**TLAser130 Part Number**

0130-0001-30

**Axion1120 Part Number**

1120-0001-30

**Axion103 Part Number**

0103-0000-30

**Axion1240 Part Number**

1240-0000-30

**Axion130 Part Number**

0130-0001-30

**Axion2120 Part Number**

2120-0001-30

**Axion160 Part Number**

160-0001-30

**Triton312 Part Number**

0300-0001-30

**Axion203 Part Number**

0203-0000-30

**Triton330 Part Number**

0300-0001-30

**Axion222 Part Number**

0222-0000-30

**Triton331 Part Number**

0331-0000-30

**Triton360 Part Number**

0360-0000-30

### Dual Mount Fixture Part Numbers

**TLAser122 Part Number**

0122-0000-29

**Triton312 Part Number**

0300-0000-29

**Axion222 Part Number**

0222-0001-29

**Triton330 Part Number**

0300-0000-29

**Axion230 Part Number**

0230-0000-29

**Triton331 Part Number**

0331-0000-29

**Axion260 Part Number**

0260-0000-29

**Triton360 Part Number**

0360-0000-29

**Axion2120 Part Number**

2120-0000-29

### Dual Mount Roller Guide Part Numbers

**Axion260 Part Number**

1000-0000-65

**Triton360 Part Number**

1000-0001-65

**Axion2120 Part Number**

1000-0002-65

**Triple Mount Fixture Part Numbers**

**Triton330 Part Number**

0300-0000-41

**Triton360 Part Number**

0360-0000-41



## Specialty Fixture Part Numbers

### Axion222 Specialty Part Numbers

0222-1101-25, 0222-1102-25, 0222-1103-25, 0222-1104-25, 0222-1105-25, 0222-1106-25,  
0222-1107-25, 0222-1108-25, 0222-1109-25, 0222-1110-25, 0222-1111-25, 0222-1112-25,  
0222-1113-25, 0222-1114-25, 0222-1115-25, 0222-1116-25

### Triton312 Part Numbers

0312-1100-25, 0312-1101-25, 0312-1102-25, 0312-1103-25, 0312-1104-25, 0312-1105-25,  
0312-1106-25

### Triton330 Part Numbers

0330-1100-25, 0330-1101-25, 0330-1102-25, 0330-1103-25, 0330-1104-25, 0330-1105-25,  
0330-1106-25, 0330-1107-25, 0330-1108-25

### V-Block Feed-Through Guide Part Number

0330-0000-25

### Axion230 Body Mount Feed-Through Fixture

0230-0000-25

### Triton312 Plate Mount Feed-Through Fixture

0312-0000-25