

FlawSense

Defect Detection System

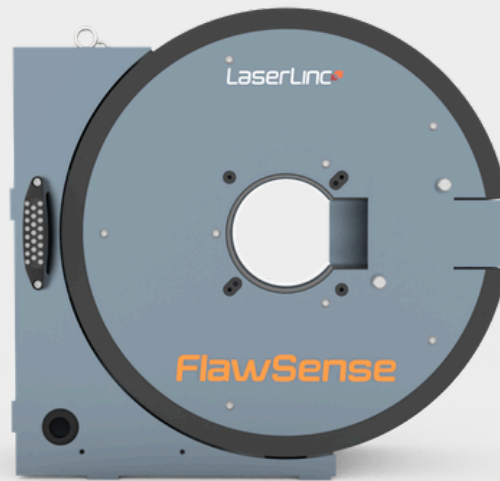
<https://laserlinc.com/automated-and-manual-sample-inspection/>

FlawSense 325 Measurement Parameters	3
FlawSense 369 Measurement Parameters	4
Mobile Medical Station	5
Fixed Industrial System	6
FlawSense 325 Calibration Kits	7
FlawSense 369 Calibration Kit	8
Plate Mount Roller Guide	9



FlawSense 325 Measurement Parameters

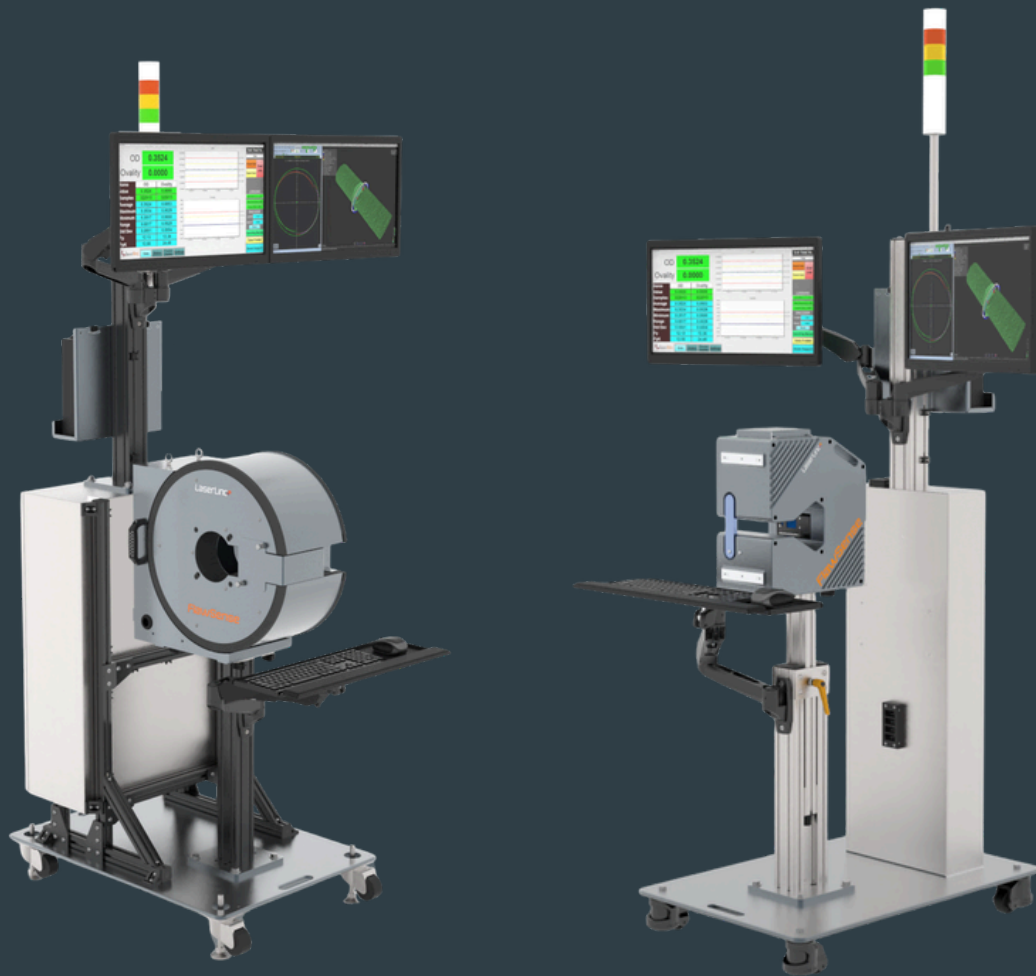
Model	FlawSense 325
Minimum OD	1 mm [0.040"]
Maximum Field Size	25 mm [1.0"]
Minimum Detectable Defect Height	5 μ m [0.0002"]
Frame Rate	2,000 - 10,000 Hz
Approximate Dimensions [H x W x D]	393.7 mm x 203.2 mm x 342.9 mm / [15.5" x 8.0" x 13.5"]
Approximate Weight	34 kg [75lb]



FlawSense 369 Measurement Parameters

Model	FlawSense 369
Minimum OD	3 mm [0.125"]
Maximum Field Size	69 mm [2.7"]
Minimum Detectable Defect Height	25 μ m [0.001"]
Frame Rate	2,000 - 10,000 Hz
Approximate Dimensions [W x D x H]	914 mm x 762 mm x 561 mm / [36" x 30" x 22"]
Approximate Weight	54.4 kg [120 lb]

01



Mobile Medical Station: A complete mobile NEMA 2 rated solution allowing for FlawSense to be fully integrated anywhere it fits into a production line.

- **Materials:** Anodized aluminum, Stainless Steel
- **Compatibility:** FlawSense 325 and FlawSense 369

02



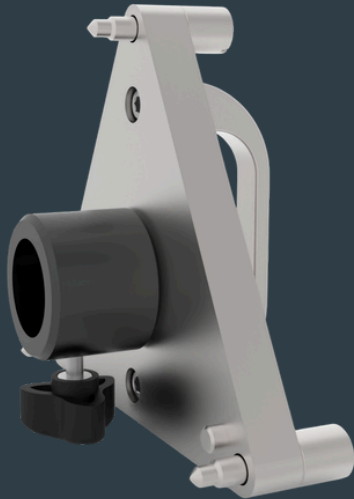
Fixed Industrial System: A modular, stationary setup consisting of a FlawSense stand, monitor stand, and a NEMA 12K-rated electronics enclosure, allowing for flexible placement along the production line.

- **Materials:** Anodized aluminum and Stainless Steel
- **Compatibility:** FlawSense 325 and FlawSense 369

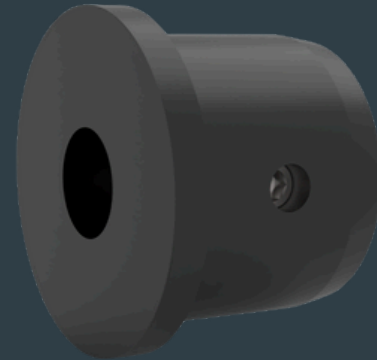
FlawSense 325 Calibration Standard

04

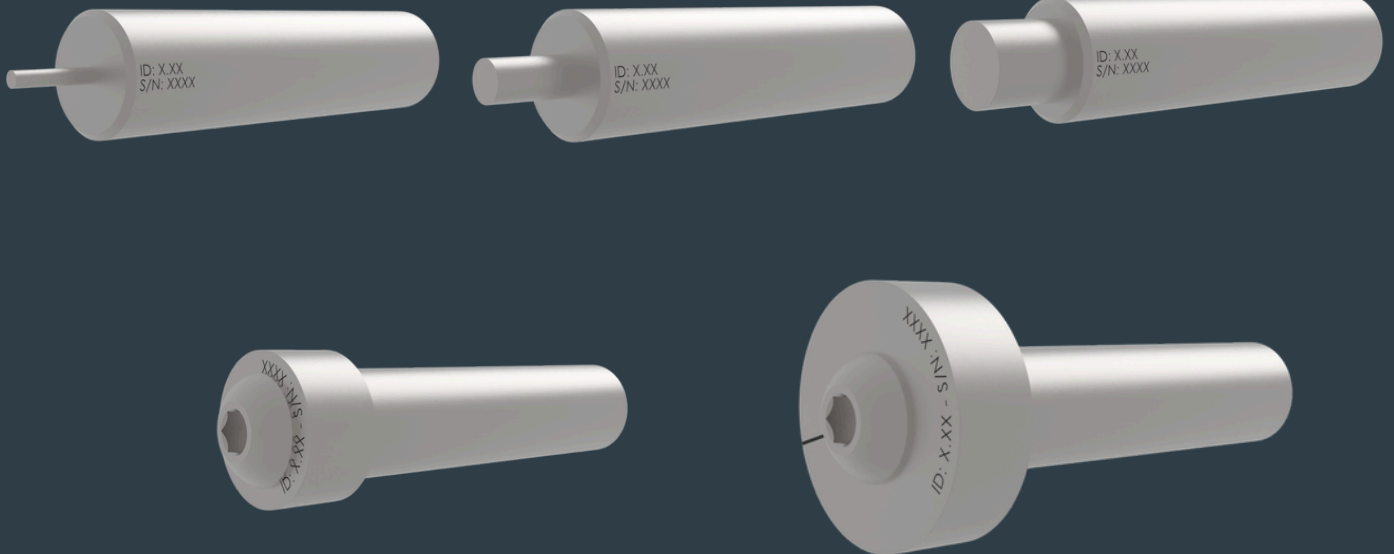
Calibration Mount



Calibration Insert



Calibration Pins/Discs



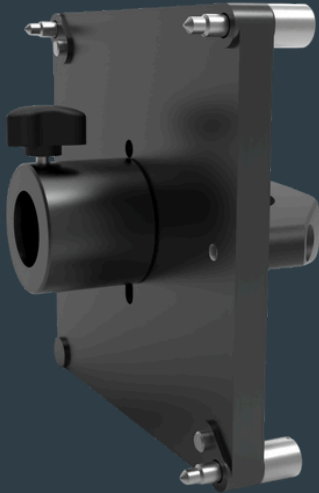
FlawSense 325 Calibration Standard: Includes a calibration mount, insert, and pins/discs to provide a reproducible and reliable FlawSense calibration.

- **Materials:** Anodized aluminum, Aluminum

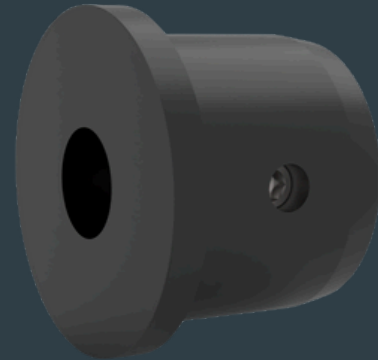
FlawSense 369 Calibration Standard

05

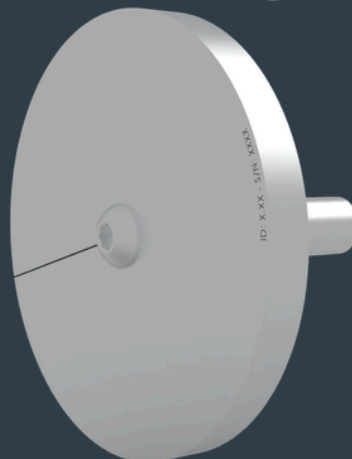
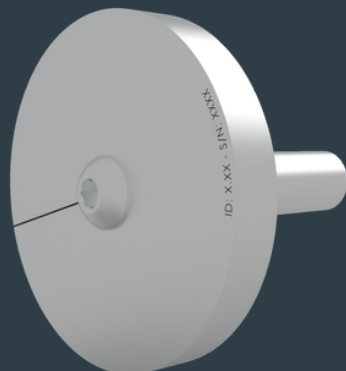
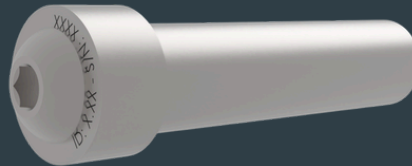
Calibration Mount



Calibration Insert



Calibration Pins/Discs

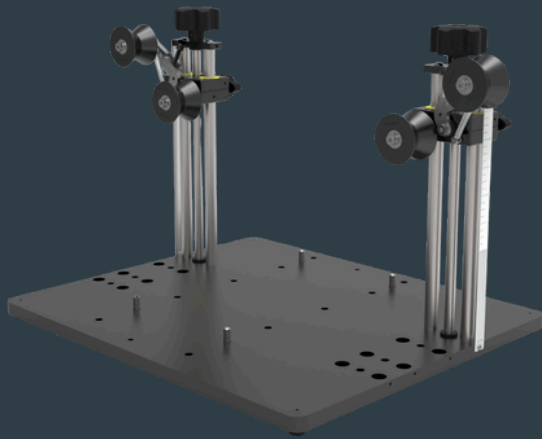


FlawSense 369 Calibration Standard: Includes a calibration mount, insert, and pins/discs to provide a reproducible and reliable FlawSense calibration.

- **Materials:** Anodized aluminum, Aluminum

FlawSense 325 Tension Roller Guide

06



FlawSense 325 Tension Roller Guide: Supports tubes and wires as they go through the throat of the gauge and ensuring it is secured to the base of the gauge.

- **Materials:** Anodized aluminum, Stainless steel