

2026



GONE. FAREWELL STUDIO

SUSTAINABLE FAREWELLS

INTRODUCTION

NATURAL BURIAL, AQUAMATION AND OTHER LOWER IMPACT ALTERNATIVES

More people than ever are thinking carefully about the environmental impact of a farewell - not just the ceremony, but what happens afterwards. In recent years a number of alternatives to traditional burial and cremation have emerged that significantly reduce that impact, while still allowing for meaningful ceremony, gathering and remembrance.

For many families, sustainability is not only an environmental decision, but an aesthetic one - influencing setting, materials and the overall feeling of the farewell.

Gone. guides families through these options, helping them understand what is available, what is possible in their circumstances, and how sustainable choices can be woven thoughtfully into a farewell.

Whatever your priorities, we will help you find the approach that feels right.

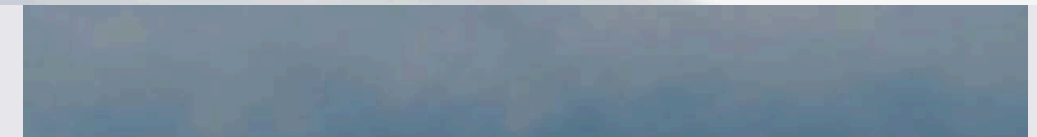


WHAT IS A NATURAL BURIAL?

AN APPROACH THAT ALLOWS THE BODY
TO DECOMPOSE NATURALLY AND RETURN
TO THE EARTH

Natural burial places the body directly into the earth without embalming chemicals, metal caskets or concrete vaults. The aim is to allow the body to return naturally to the surrounding landscape - an approach that many people find not only environmentally meaningful, but quietly profound. Ceremonies often take place within the landscape itself, creating a setting that feels elemental, quiet and deeply grounded.

Natural burial grounds are typically managed as protected natural environments - places of genuine beauty and quiet significance. A biodegradable coffin or shroud replaces the traditional casket, there is no embalming, and native vegetation is restored in place of a headstone. The result is a resting place that continues to live and grow. Availability varies by state, and the requirements and settings differ considerably. Gone. can help families understand what is genuinely available in their area, and design a farewell ceremony that feels as considered and intentional as any other we produce - one that honours both the person and the landscape that surrounds them.

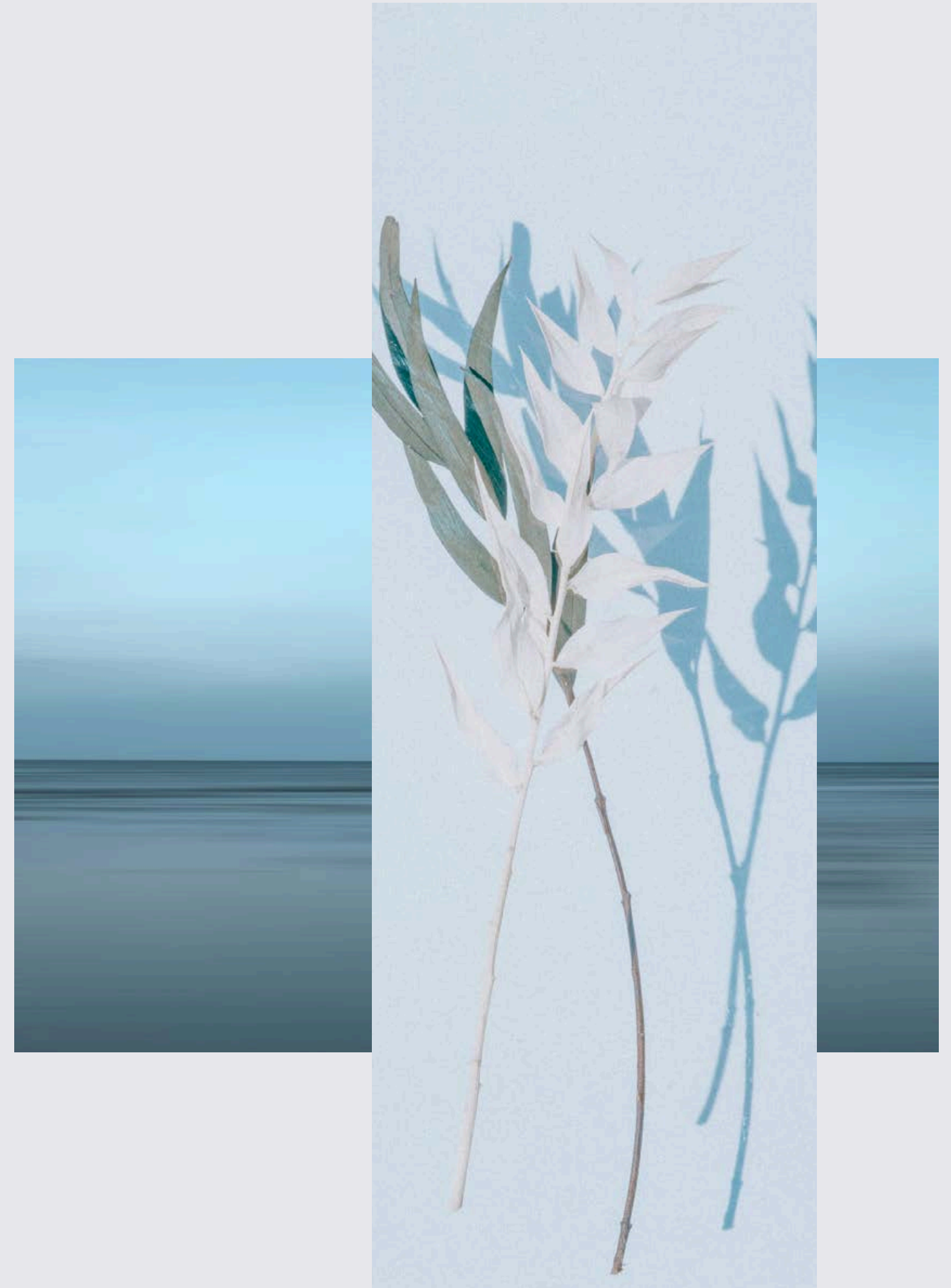


WHAT IS AQUAMATION?

ALKALINE HYDROLYSIS

Aquamation - also known as alkaline hydrolysis - is a water-based alternative to flame cremation. It uses a gentle combination of water, temperature and natural chemistry to return the body to its elemental form. The process is quiet, considered, and increasingly chosen by those who want a lower impact alternative without compromising on the care and dignity afforded to the person who has died.

Compared with traditional cremation, aquamation typically uses significantly less energy and produces considerably fewer emissions. Families still receive ashes at the conclusion of the process - which can be kept, scattered, or incorporated into a memorial in exactly the same ways as with cremation. Gone. can help families understand whether aquamation is available and appropriate in their circumstances, and ensure that it is incorporated into the farewell or memorial in a way that feels seamless and meaningful.



HOW GONE HELPS

SUSTAINABLE FAREWELL OPTIONS REQUIRE CAREFUL NAVIGATION

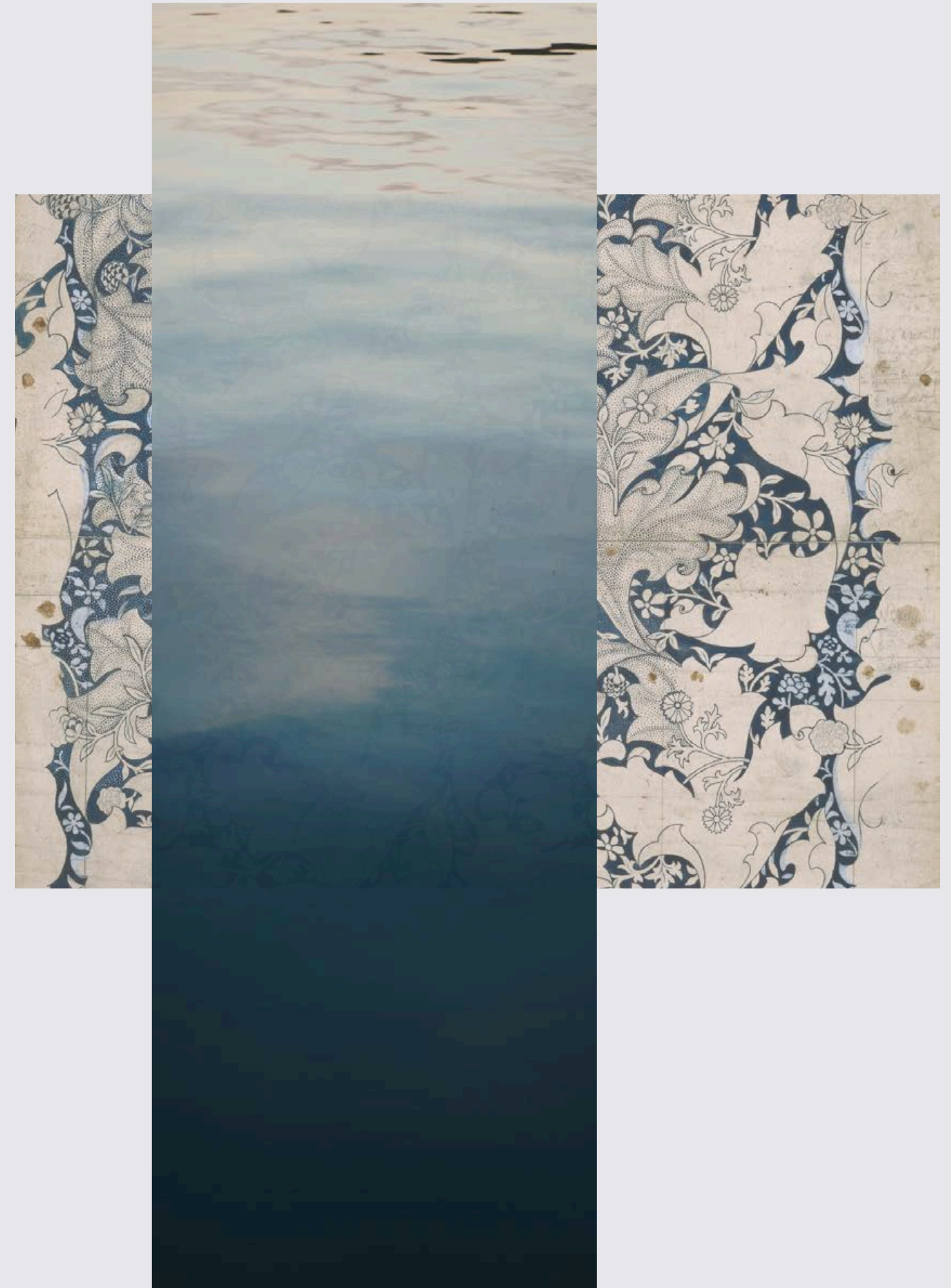
Availability of sustainable options varies significantly by location across Australia. We will always be clear about what is genuinely available in your circumstances.

We help connect families with trusted and vetted providers, and ensure that whatever sustainable approach is chosen sits seamlessly within a farewell that feels beautiful, personal and complete.

Gone. does not operate burial grounds or crematoria - our role is to guide, connect and produce the experience around them.

How sustainability can help shape the experience:

- natural bush settings
- biodegradable materials
- seasonal florals
- low-impact memorial objects
- planting rituals



NEXT STEPS

If you'd like to explore sustainable options for a farewell, we're happy to talk through what's possible. Please email the studio or contact us via the website:

EMAIL

studio@gonestudio.com.au

PHONE

0456 523 162

WEBSITE

gonefarewellstudio.com.au

There is no obligation, and no pressure to move quickly, unless you'd like to.

The background features several dried botanical specimens, including a branch with small leaves and a larger leafy branch, set against a light, textured surface. A semi-transparent teal rectangular box is centered on the page, containing the text. A thin white line is drawn across the page, looping around the text box and extending towards the right side.

THANK YOU

Ashley Diamond
Founder and Executive Producer

GONE. FAREWELL STUDIO

Based in Sydney, working across Australia by request.