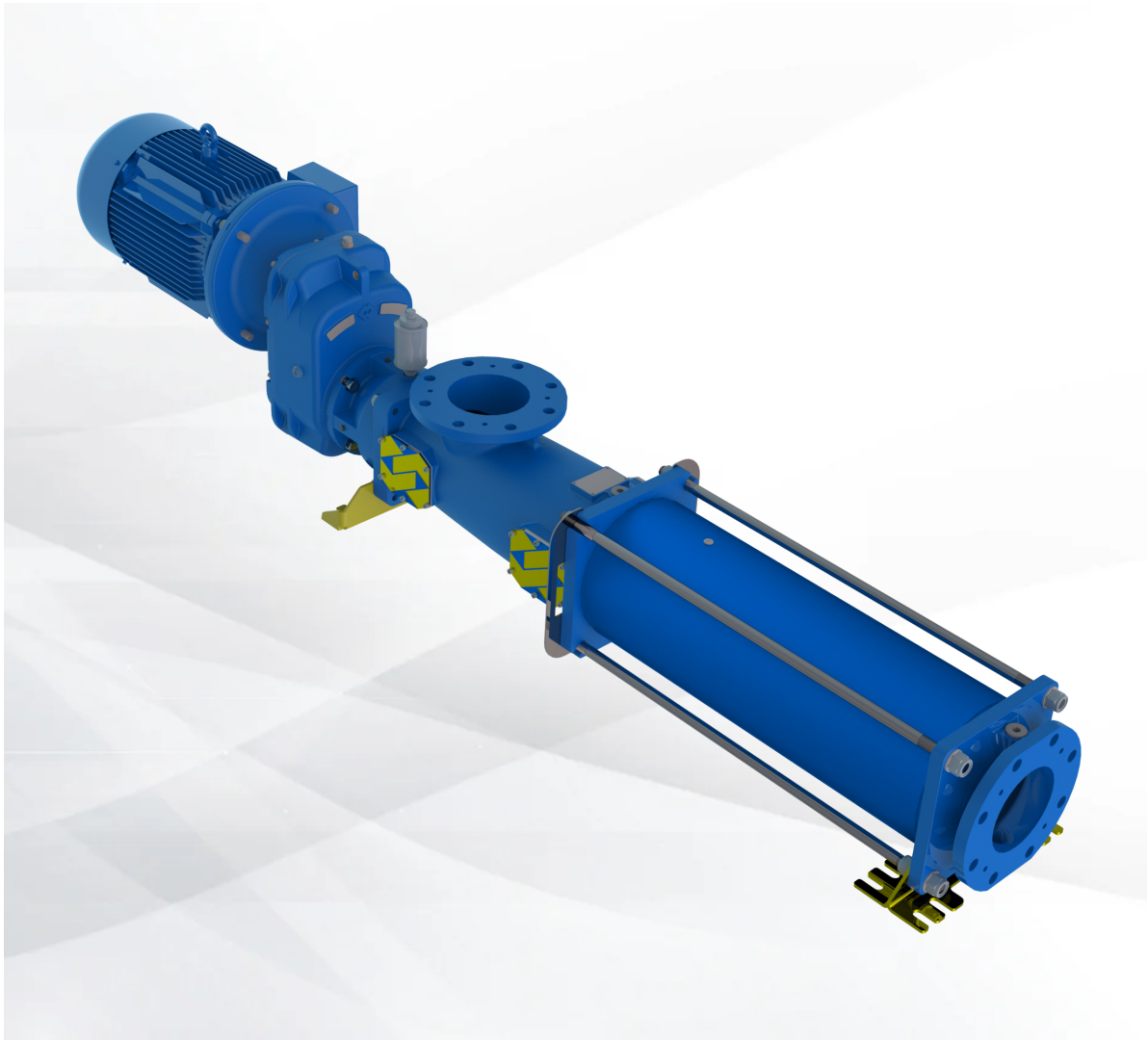


# Progressive Cavity Pumps

## PCP



## EFFICIENT, SAFE, RELIABLE

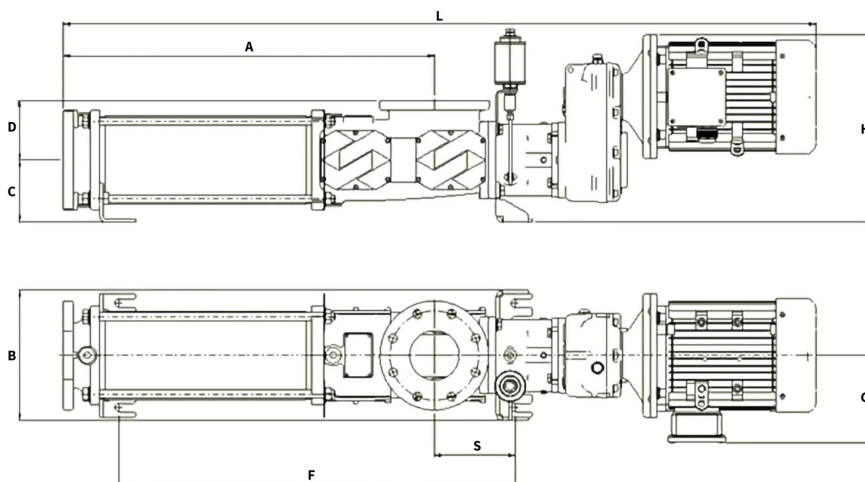
The CHIOR® PCP pump is designed for the transfer of liquids, including those with high viscosity, with or without suspended solids.

It ensures effective pumping of non-homogeneous liquids, making it ideal for water treatment plants, biogas plants, and farms.

### Technical Features

- Max. slurry temperature: 55 °C
- Max. solids size: 12 ~ 24 mm
- pH of treated liquid: 6 ~ 9
- Standard operating pressure: 3 bar ( running at 204 rpm)
- IE3 WAM electric motor for enhanced energy efficiency
- Parallel axis WAM gear reducer with built-in bearing bracket to absorb radial and axial forces
- Double-acting oil-filled cartridge seal for improved durability
- Universal joint surrounded by fibre-reinforced, clamped-on sleeve for quick and easy maintenance
- Cardan joint easily replaced by pushing out the bolt through 4 maintenance openings
- Rotor made of hardened tool steel, resistant to abrasion and coarse-grained materials
- Rotor with built-in cutting blades made of hardened tool steel for efficient shredding
- Innovative technical solution for both shredding and mixing, as well as flow intensification
- Low-wear NBR stator can be quickly and efficiently replaced using 4 threaded ends
- Self-priming capability up to 9 m (in clear water)
- Dry-running protection set-up by a drilled bore in the stator

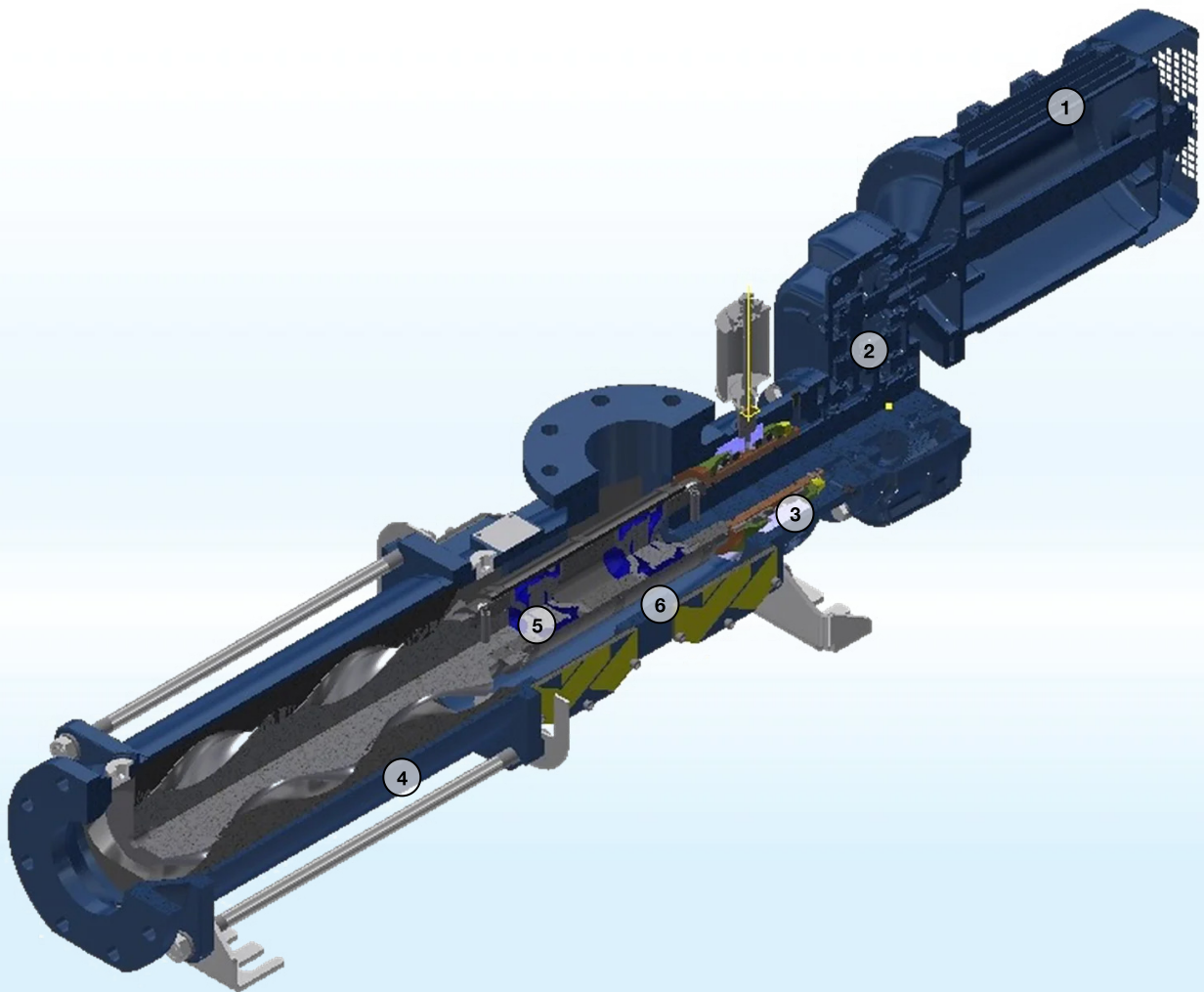
### Overall Dimensions



TYPE	Power (kW)	Weight (kg)	Flange DN (mm)	A (mm)	B (mm)	C (mm)	D (mm)	F (mm)	G (mm)	H (mm)	L (mm)	S (mm)
PCP 022	2.2	135	65	650	262	125	110	701	159	377	1,418	163
PCP 040	4.0	163	100	748			120	799	177		1,518	
PCP 055	5.5	233	150	891	302	150	140	967	191	438	1,799	192
PCP 075	7.5	260		951			1,027	1,859				
PCP 110	11.0	398		1,070			1,164	2,169				
PCP 150	15.0	463		1,231	372	160	165	250	1,325	509	2,408	
									553	2,408		

## Benefits

- ✓ **Sturdy design ensuring high durability for long-lasting performance**
- ✓ **Easy maintenance with large openings, multiple drains, and cleaning connections for efficient upkeep**
- ✓ **High suction capacity and effectiveness thanks to optimised pumping units**
- ✓ **Optimised design enabling continuous, low-pulsation delivery, minimising turbulence and clogging**
- ✓ **Space-saving solution with compact, one-piece design for efficient use of space**
- ✓ **Modular design offering high flexibility, reducing the need for spare parts and enabling easy customisation**



- 1 IE3 WAM electric motor
- 2 Parallel axis WAM gear reducer
- 3 Double-acting oil-filled cartridge seal
- 4 Low-wear NBR stator
- 5 Rotor with built-in cutting blades
- 6 Universal cardan joint

## Options

- Pressure sensor with ceramic membrane G $\frac{3}{4}$

## Range - Performance

MODEL	PCP 022	PCP 040	PCP 055	PCP 075	PCP 110	PCP 150
Capacity in m <sup>3</sup> /h at 204 rpm	9	20	30	40	55	80

\* Values measured with clear water at 20 °C.

Results may vary by changing the operating conditions depending on the flow rate, density and viscosity of the liquid, the type and dry matter content of the slurry (depending on type of animal feed), the height and distance of the support, as well as the diameter of the pipe.

## Application



August 2025 Rights reserved to modify technical specifications.



This brochure has been edited for distribution in European Union countries.