


imagine  
extraordinary



ES | Legacy



# Timeless Design Meets Modern Performance

The Legacy Line represents the pinnacle of architectural innovation, seamlessly integrating refined aesthetics, advanced engineering, and superior performance. Designed for visionary architects and developers, this luxury collection redefines the boundaries of contemporary design with precision-crafted windows and doors that elevate the built environment.

Every detail in the Legacy Line is meticulously engineered to meet the highest standards of thermal efficiency, structural integrity, and design versatility. With narrow sightlines, premium finishes, and cutting-edge thermal break technology, this collection ensures optimal performance without compromising on architectural expression.

A modern, multi-story house with a mix of dark grey concrete, horizontal wood slat siding, and large glass windows and doors. The house is set against a backdrop of tall evergreen trees and a clear sky. The interior lights are on, and the view through the windows shows a landscape with trees.

## Doors

**ES-LG850**  
Multi-Slide Door

**ES-LG525**  
Thermal Swing Door

**ES-LG550**  
Pivot Door

## Windows

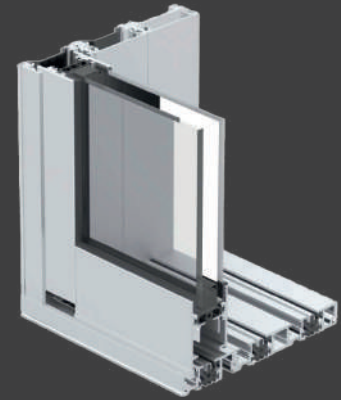
**ES-LG225**  
Window Wall

**ES-LG250**  
Casement/Awning Window

# Doors

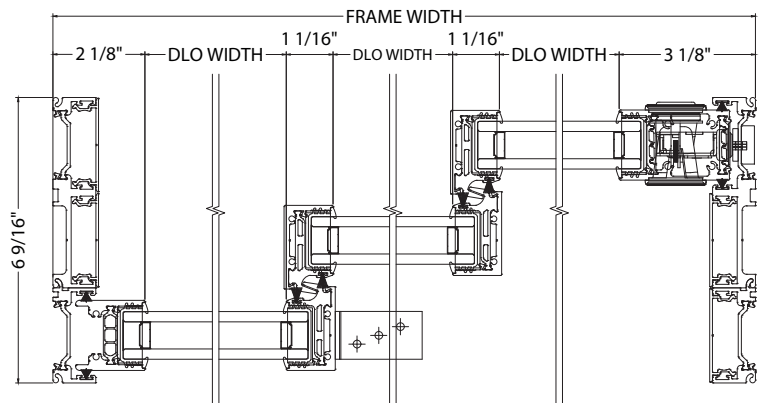
## ES-LG850 Multi-Slide Door

The ES- LG850 Multi-Slide door effortlessly blends style with functionality. Purposefully engineered for maximum performance, this fully thermally broken system offers smooth operation and narrow sightlines to enjoy panoramic views. This add a track system allows for endless design possibilities and delivers both elegance and efficiency to any luxury space.



### Performance & Highlights

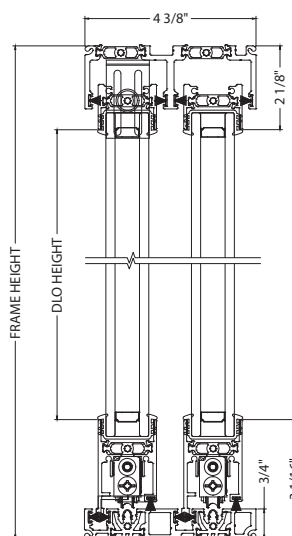
- Multi-slide door system
- Frame depth:
  - 2 track: 4 3/8"
  - 3 track: 6 9/16"
- Sightline: 1 1/8"
- Designed for 1 1/8" insulating glass
- U-Value:
  - 0.3 ( 1/4" Clear SB70 #2 + 5/8" TPS 90%Argon + 1/4" Clear)
  - 0.26 ( 1/4" Clear SB70 #2 + 5/8" TPS 90%Argon + 1/4" Low-E Pilkinton #4)



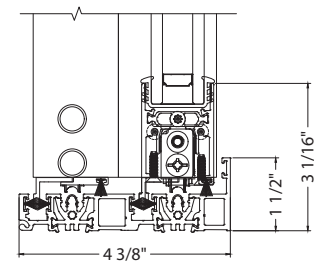
Lock Style Flush Handle

### Features

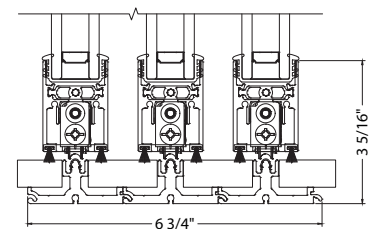
- Fully thermally broken system
- Sill options of flush, water barrier, ADA and thinline available
- Stucco return nail fin 1" and 1 3/8"
- Standard flush handle and an available pull handle option
- Pocketing option
- Anodized, painted, and woodgrain finishes available



Flushsill



Watersill



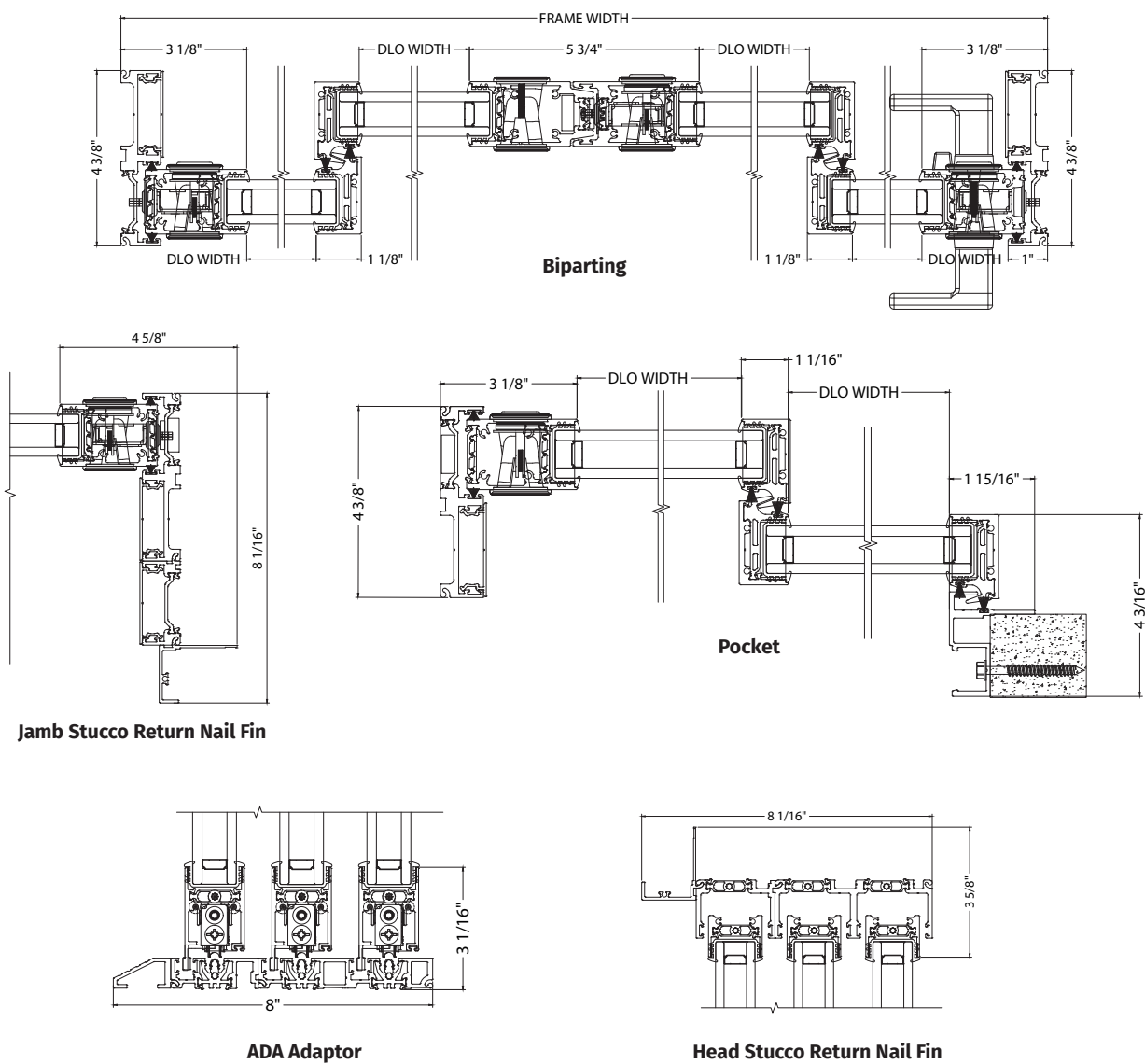
Thinline

# ES-LG850 Multi-Slide Door

Extended  
Datasheet

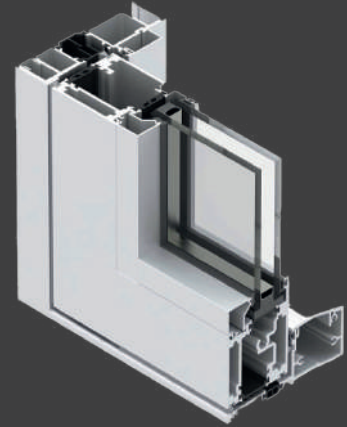


## Technical Details



## ES-LG525 Thermal Swing Door

Designed to complement high-end architecture, the ES-LG525 thermal swing door combines durability, elegance, and energy efficiency. Our hinged doors are engineered with advanced locking systems and sealing technology, ensuring both peace of mind and optimal insulation. Available in a range of styles, the hinged doors provide a grand and welcoming entrance to any room.



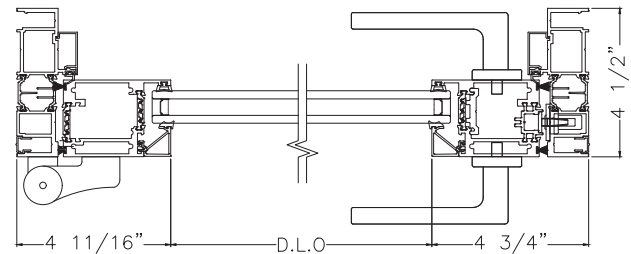
### Performance & Highlights

- Thermal swing door
- Frame depth: 4 1/2"
- Sightline: 3 3/4"
- Designed for 1", 1 1/4", 1 3/16" insulating glass and 1 9/16" double insulating glass.
- U-Value:
  - 0.3 (3/16" Clear SB70 #2 + 1/2" TPS 90%Argon + 3/16" Clear + 1/2" TPS 90%Argon + 3/16" Clear)
  - 0.28 (3/16" Clear SB70 #2 + 1/2" TPS 90%Argon + 3/16" Clear + 1/2" TPS 90%Argon + 3/16" Low-E Pilkinton #6)

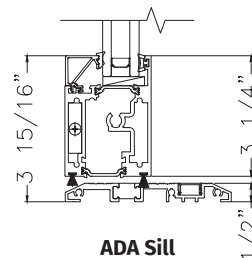
### Features

- Standard and 5 Multipoint lock options
- Lever handle or offset ladder pull with thumb turn option
- Dr. Hahn surface mount hinges for outswing
- Hager mortise hinge for inswing
- Anodized, painted and woodgrain finishes available

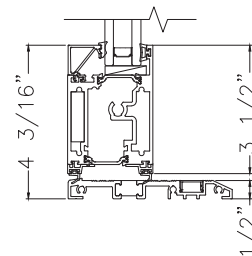
### Out-Swing Configuration



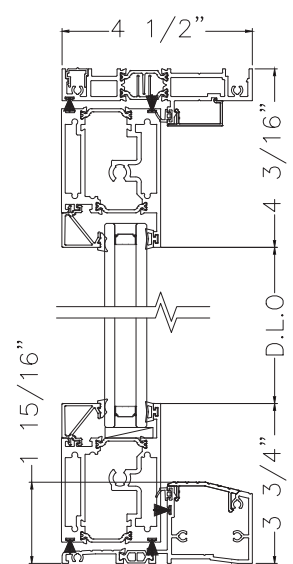
### Jamb at Swing Out



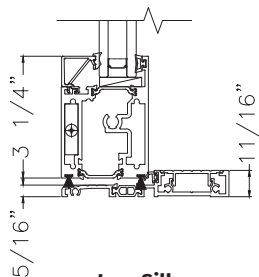
### ADA Sill



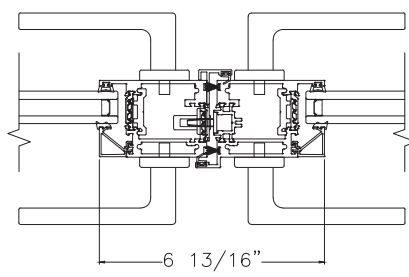
### Low Sill



### Head and Sill



### Low Sill No Water



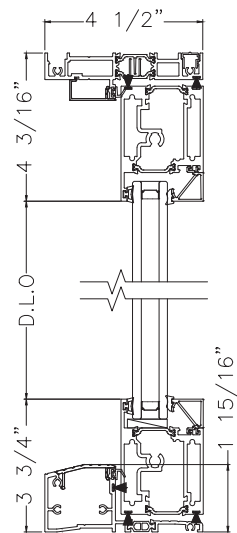
### Astragal

# ES-LG525 Thermal Swing Door

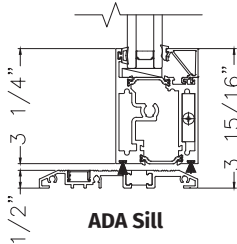
Extended  
Datasheet



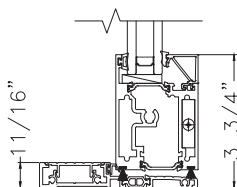
## In-Swing Configuration



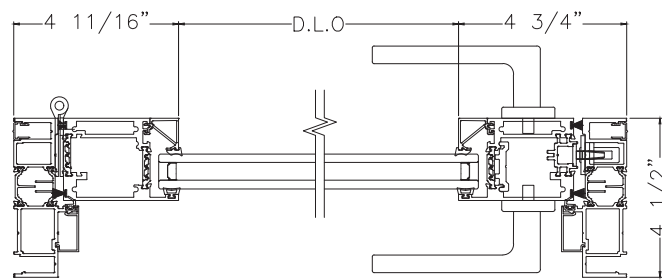
**Head and Sill**



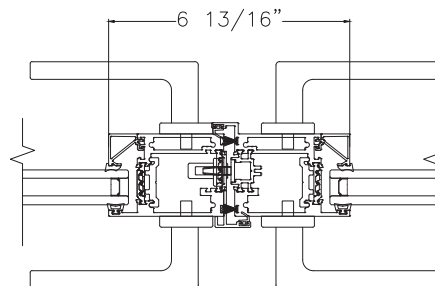
**ADA Sill**



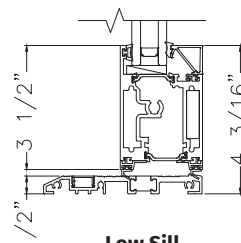
**Low Sill**



**Jamb at Swing Out**



**Astragal**



**Low Sill  
No Water**

## ES-LG550 Pivot Door

The ES-LG550 Pivot Door instantly captures attention with its unconventional and captivating design. The pivot hardware supports the weight of the door on the bottom arm, putting less stress on the frame and allowing for an effortless and smooth swing. The pivot hinge is hidden inside the door panel which allows for easy mounting and efficient onsite install. The fluid door movement creates an experience at the entryway that embodies cutting-edge technology and modern sophistication.

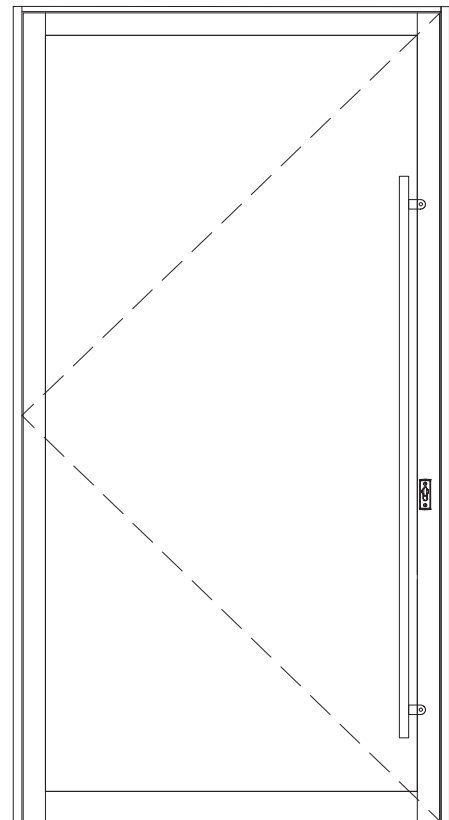


### Performance & Highlights

- Thermal pivot door
- Frame depth: 4 1/2"
- Sightline: 4 3/4"
- Designed for 1" insulating glass
- U-Value:  
0.34 (3/16" Clear SB70 #2 + 1/2" TPS 90%Argon + 3/16" Clear + 1/2" TPS 90%Argon + 3/16" Clear)  
0.32 (3/16" Clear SB70 #2 + 1/2" TPS 90%Argon + 3/16" Clear + 1/2" TPS 90%Argon + 3/16" Low-E Pilkinton #6)

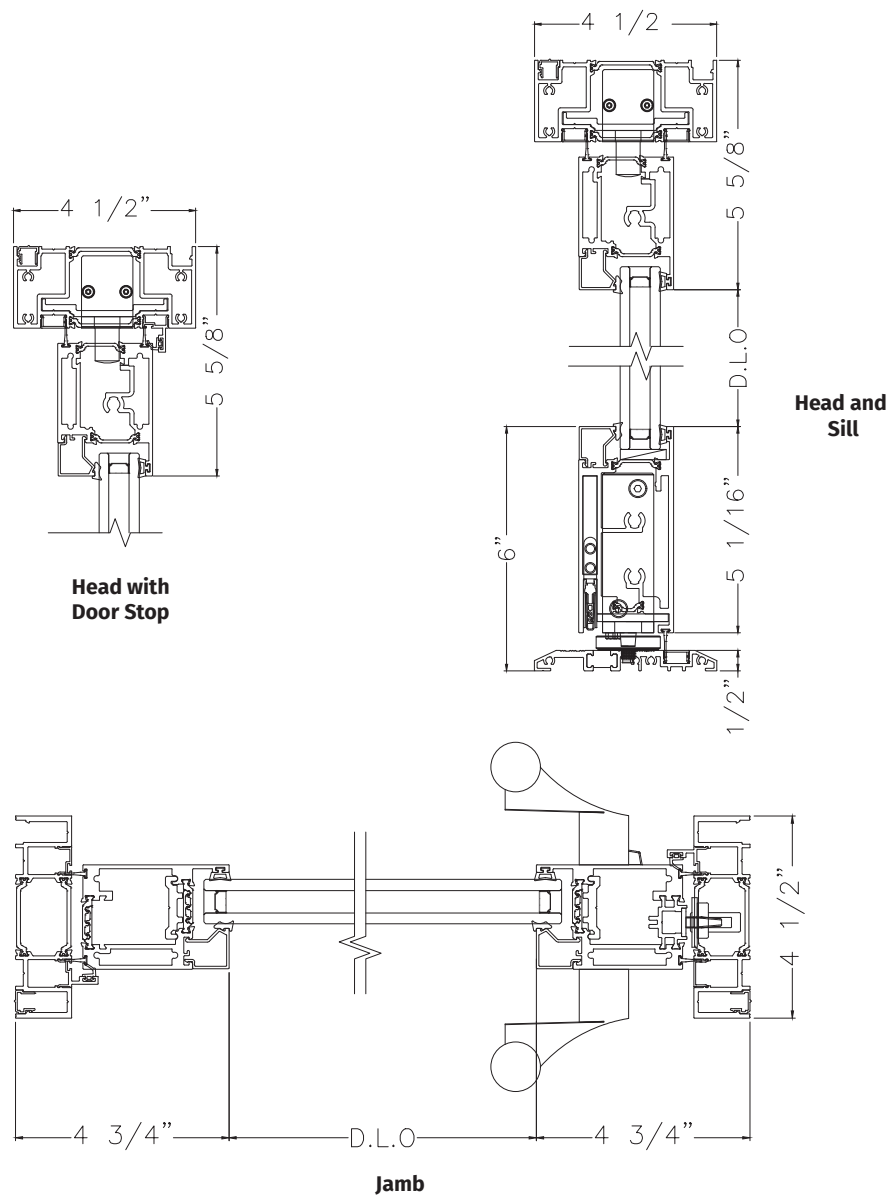
### Features

- Nail fin and block frame available
- Ladder pull and type lock
- Fully thermally broken
- Anodized, painted and woodgrain finishes available



# ES-LG550 Pivot Door

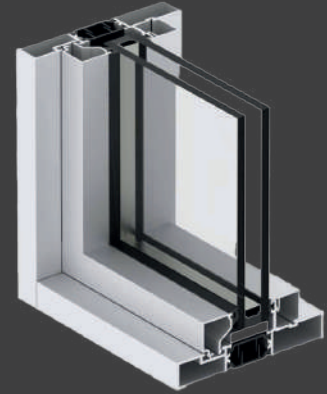
Extended  
Datasheet



# Windows

## ES-LG225 Window Wall

The Legacy Line 225 Window Wall System represents a new level of innovation in the market. Engineered with the most advanced thermal break technology, this system delivers unmatched thermal performance with a U-Factor of 0.19 using standard dual pane, argon-filled IG units. The Legacy Line 225 not only excels in energy efficiency but also sets new standards in design and versatility, making it the ultimate choice for modern architecture.

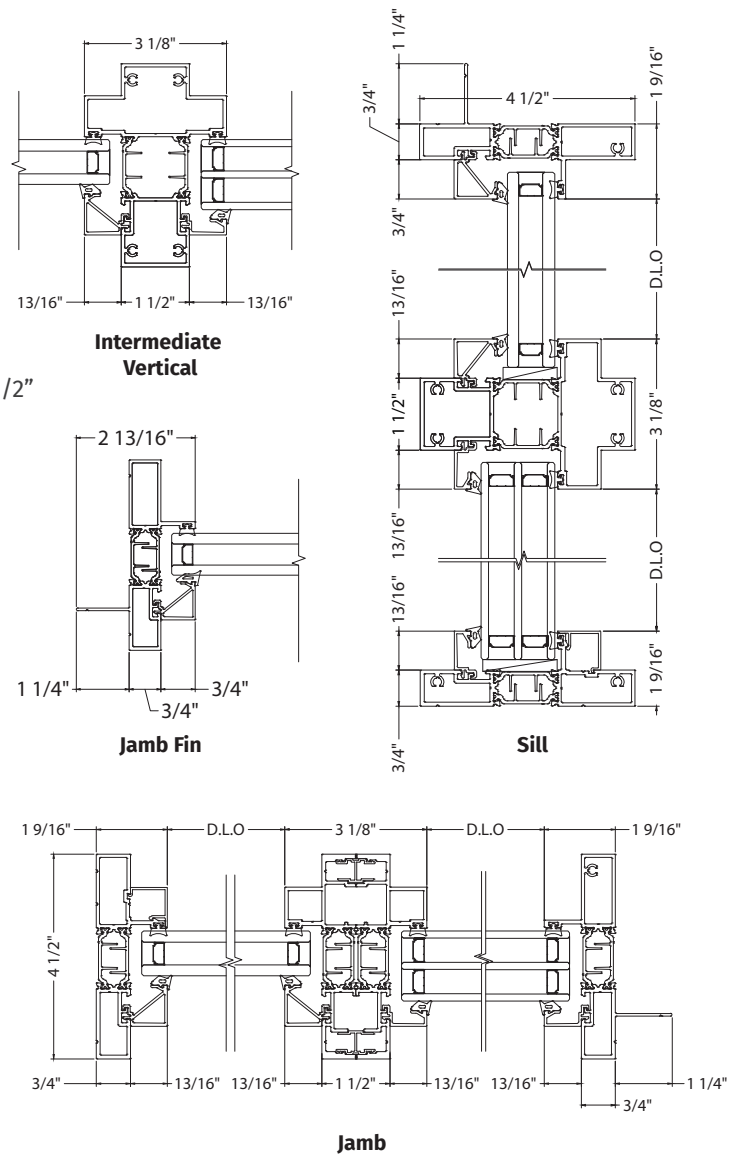


### Performance & Highlights

- Fixed window system
- Pre-assembled and pre-glazed
- Sightline: 1 9/16"
- Frame depth: 4 1/2"
- Designed for 1 1/8" insulating glass, 1 9/16 and 1 19/32" double insulating glass.
- Test configuration: 60" x 120"
- CSA A440 Air: Fixed
- U-Value:
  - 0.29 (1/4" Clear SB70 #2 + 1/2" TPS 90%Argon + 1/4" Clear)
  - 0.27 (3/16" Clear SB70 #2 + 1/2" TPS 90%Argon + 3/16" Clear + 1/2" TPS 90%Argon + 3/16" Low-E Pilkinton #6)

### Features

- Flush frame and fin frame
- Fully thermally broken
- Anodized, painted and woodgrain finishes available



### Extended Datasheet



## ES-LG250 Casement/ Awning Window

The ES-LG250 Casement and Awning window was designed to not only enhance your living space with practical function but with an elegant design. This thermally enhanced system offers a clean and modern aesthetic that complements various architectural styles. Its sleek lines and versatility makes it a perfect choice for both traditional and modern homes.



### Performance & Highlights

- Casement and Awning configuration
- Maximum panel size:
  - Casement: 48" Width x 84" height
  - Awning: 60" Width x 48" height
- Frame depth: 4-1/2"
- Sightline: 2-15/16"
- Design load: +80/-80 psf
- U-Value: 0.3
- Expected AAMA Rating LC-PG30

### Features

- Thermal break system for improved performance and insulation
- Available with nail fin anchor
- Stackable (modular) mullion to snap in with legacy line systems
- Euro-groove to fit multiple hardware options
- Optional roto-operator to meet ADA requirements.

**COMING SOON**

**SUMMER 2025**





**Designed for Life**

# Accessories

## Design Elements

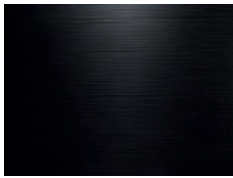
Every window and door is produced with the finest materials, using the latest technologies and benefiting from the skilled talent of our experienced team. The result is an aesthetic design with engineered precision and proven performance.

## Colors and Finishes

### Color Options (AAMA 2605)



**Clear Anodized**



**Black Anodized**



**Bronze Anodized**



**Black**



**Silver**

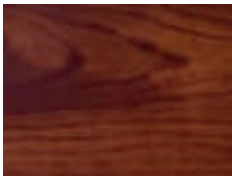


**Birchmount Grey**



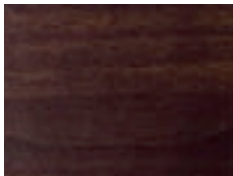
**Synchronicity Beige**

### Woodgrain Finishes



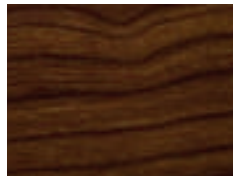
**Mahogany**

DS721 SU + 81441/01 L4



**Nogal**

DS733 SU + 81806/05 L4



**Teka**

DS733 SU + 82601/01 L4



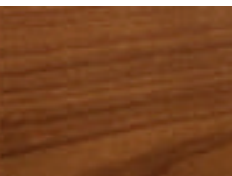
**White Oak**

DS745 SU + 82513/04 L4



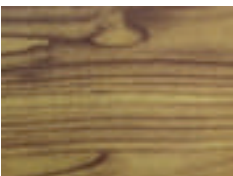
**Pine**

17G-916-A040 + 81406/01 L4



**Golden Pecan**

17G-937-A040 + 81407-01 L4



**Olive**

DS718S + 81109/04 L4



**imagine extraordinary**

[www.eswindows.com](http://www.eswindows.com)

