

Site360

COMPLETE PLATFORM

OVERVIEW



Safety At Enterprise Level

Company Onboarding & Pre-Qualification

The Site360 platform ensures that the contracting company is suitably qualified to conduct the work required by the company and has a "Safety Management System" to support the tasks that are to be undertaken. Our safety auditors review the safety management plan and endorse the document. This ensures that the contracting company engaged meets the required legislation.

We also capture all business licences and insurances and monitor the expiry dates to ensure the contractor always remains compliant.

Company Based Inductions

The workers for each contracting company completes a company based induction so that each contracting company worker is aware of the expectations and requirements to work on the customers sites. The inductions are normally renewed annually and are automatically provided to the worker prior to the expiry date through the Site360 app.

Site Check In Process - Verification

As a worker checks into a site, ALL business licences, insurances, accreditations and inductions are checked instantly to ensure the worker is clear to proceed. If any check fails, a message will instantly be sent to the site manager, who can then deal with the worker to rectify the situation and allow them to proceed. During check in, we are also able to poll third party databases to ensure the individual is clear to commence work on the site (i.e.) working with children checks.

Individual Workers

The company's workers and sub-contractors are attached to the company and a profile is set up in Site360 app for each individual. The individual will upload a photo, any trade licences and inductions that are relevant to the work being conducted.

We provide the platform in 15 languages to ensure that if English is not a first language, we can communicate effectively through a language of choice.

If required, we can verify the individual against a document to ensure the integrity of the individual (ie) Passport or Drivers' Licence – using Microsoft biometrics to match the individual. This has proven important in contractor classifications that involve a high level of diverse migrants in the workforce.



Safety At Site Level



Site Control

We have developed a patented Geo-location platform that does not use any scanning or QR code to check into a site. We set up a geo-pin on each site that requires the user to be inside to check in. We then set a geo-fence around this to enable auto checkout when leaving as many people always forget to checkout. Our system provides a reliable view of who is onsite at point in time, accurately.

Site Induction

Every site is different, so we have the facility to provide a “site induction” prior to entering a site for the first time. This is able to be completed on the workers smart device and it provides an overview and a series of questions that relate specifically to that site. These inductions are then renewed on an annual basis to ensure all contractors and visitors are aware of site-specific hazards.

Condition of Entry To A Site

At each visit the contractor / visitor can receive a “Condition of entry” notification that outlines important information relating to their visit. (This was critical in the recent pandemic which allowed us to communicate information and changes to business rules to everyone to minimize impact to the operations. The condition of entry needs to be acknowledged prior to proceeding with the site check in.

Exclusion Zone

This is an optional screen to provide direction to contractors / visitors to ensure they are aware of hazardous areas within the business.

Reason For Visit

We capture the individual contractor / visitors reason for visiting to allow us to curate the journey on site and share related information with them.

Site Hazard Alerts

Based upon the “reason for visit” high risk information relating to the work they be conducting is outlined in a “bright” pop up message. This is for maintenance technicians, IT technicians and builders who need to know of the existence of hazardous materials, asbestos and MSDS to refer to before commencing work. These documents are attached to the site and available to the contractors 24/7 while on site.

Safety alerts

These are delivered to every contractor / visitor 24/7 to ensure consistent communication of any critical information that is required to stay safe while on site. (ie) if there has been a oil spill in part of the building the site team can quickly put up a message with a photo to identify the area to ensure everyone is kept safe.

Emergency Evacuation

Each site has an emergency evacuation function which can be triggered by site management in the event of a emergency. In the event of an evacuation an in “app” message is sent to each contractor and visitor on site. They are sent a copy of the evacuation map and instructions to vacate the premises and move to the evacuation point. The site management team get real time notifications (1) message received (2) acknowledged by the individual (3) they are on the way to the evacuation point and (4) their safe arrival at the evacuation point.

Documents

Each site has a set of critical documents that are required to be accessed by contractors while on site. These include

- Hazardous material register
- Restricted access register
- Material safety data sheets
- Any other document required



Workflows



Digital Work Authorities

When contractors check into a site, they are prompted to complete a digital work order as part of the Site360 workflow. Contractors can select an existing work order from a predefined list or enter the work order number, scope of work and priority level manually.

As part of the check-in process, contractors identify any applicable high-risk tasks from a predefined list. Where high-risk work is selected, Site360 automatically presents the relevant Permit to Work questions, which must be completed and validated before work can proceed. This process also confirms required personal protective equipment and notifies site management that a contractor is on site and preparing to undertake high-risk activities.

Each work order is managed through clearly defined PRE and POST stages. The PRE stage requires site management approval prior to work commencing, ensuring appropriate oversight and risk controls are in place. Upon completion, the POST stage is submitted for verification and approval once the work has been confirmed as satisfactory.

This structured workflow creates a complete digital record of each visit, capturing site details, check-in and check-out times, and the work performed. The result is improved compliance, stronger governance, and accurate reconciliation of contractor invoices. Customers using this workflow have achieved reductions of up to 30% in contractor-related costs.

Electronic Forms

Any data currently captured at site level by team members, contractors or auditors can be digitised allowing for efficient data capture and analysis. The data is available in real time to management.

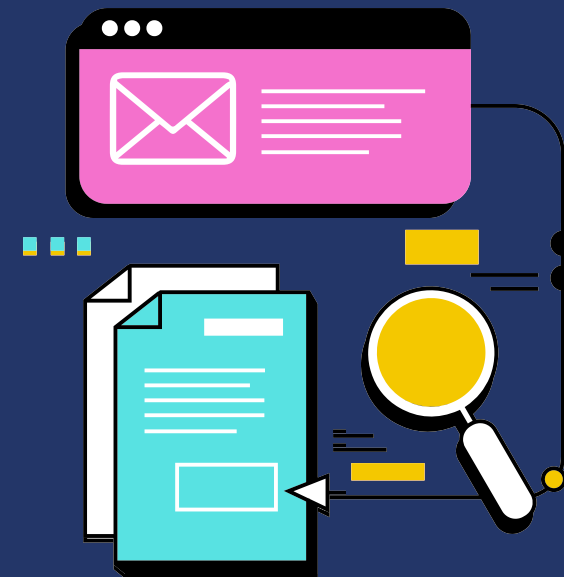
We use voice to text to make the capture of information simpler for the user.

Key / Pass Register

We can allocate keys or passes provided to contractors while on site to conduct their work. Our platform will track the keys / passes allocated and send reminder messages on check out to ensure the contractor returns the keys / passes.

15 Languages

Users can choose from 15 of the world's most widely spoken languages, allowing them to work confidently without language barriers and access forms and documents as normal.



Reporting

Administration Centre

Each site has access to administration centre which provides them with full details of all activities on their site.

- Who is currently on site?
- What are they doing on site?
- What work orders are being executed?
- How long since an individual was on site?
- Review what , when , who and why for all visitor types

Microsoft Power BI

We use Power BI for data visualisation and analysis and produce a series of reports for our clients which we deliver through the PBI platform.

This allows for review of:

- (1) all sites or single sites or regions.
- (2) review of contracting companies works and performance
- (3) review of work orders
- (4) review of safety compliance



Roadmap

Digital Locks

We are working on a solution for many of our customers to replace door locks with digital locks and access security.

We will provide digital locks that when a contractor arrives and required access to a area / building they will request a 6 digit code which our platform will generate and it will record who requested the code, who approved the access and the time the contractor left the site. The lock can be opened digitally remotely by the client's operations / security team or by our team. It removes the problem of a contractor taking / losing master key sets.

Lone Worker Module

The risk of high-risk workers working alone elevates the risk levels so we are working on a platform addition to improve the safety levels relating to lone workers in high risk situations.

Biometric Sign-In

Biometric sign in will soon be available, to ensure the contractor is the same person who was registered by the company, allowing secure controlled access and a secure contractor ecosystem.

Offline Mode

Users will be able to complete forms and workflows, with mobile or Wi-Fi coverage, allowing for user to carry out tasks even in remote locations or during periods of mobile service interruptions.

Security

Azure

We operate on the MS Azure platform, and we are a Microsoft partner. All data is stored in country securely.

We also do NOT use QR codes in sites as uncontrolled QR codes can be scanned and other QR codes loaded ontop of the existing code to steal users' data.