

Meet Your New AI Co-Workers

How to Deploy AI Agents Today

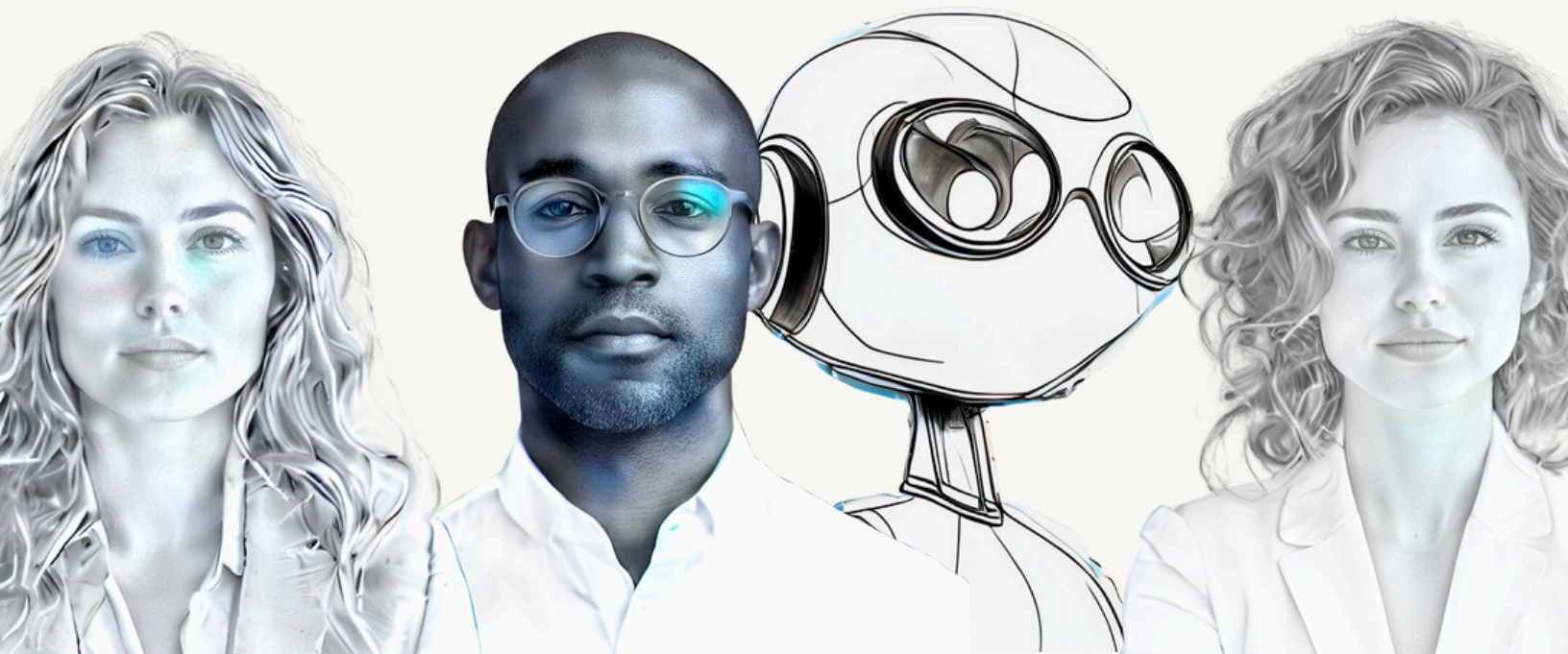


Table of Contents



CHAPTERS

- 01 The Rise of the AI Co-Worker
- 02 Introduction to AI Agents
- 03 Customizable AI for Unique Business Needs
- 04 AI Co-Worker Agents: Documentation Collaboration
- 05 Success Stories of AI Co-Worker Agents
- 06 The Future of AI Agents and Human Collaboration
- 07 Embracing the Future with AI Agents as Collaborative Partners
- 08 About Subatomic



01. The Rise of the AI Co-Worker

Generative AI has swiftly shifted from a cutting-edge innovation to an essential tool in the modern workplace. As of early 2024, 65% of organizations report regularly using generative AI in at least one business function—nearly double the 33% adoption rate from just a year earlier. This rapid integration underscores not only the technology's potential but also the massive opportunities it creates across industries.

But generative AI is just the beginning and most organizations are just scratching the surface. While adoption is rapidly increasing, many organizations still rely on the independent adoption of co-pilot tools like ChatGPT. While these tools can be powerful, it can be difficult to scale and govern more targeted use of AI that yields real, measurable results. The next transformative wave is here: **AI Agents**—intelligent co-workers designed to work alongside human teams, enhancing productivity, precision, and strategic decision-making. AI Agents are dynamic, customizable, and capable of managing complex workflows. By addressing specific business needs and evolving with continuous human input, AI Agents are positioned to unlock unparalleled growth and innovation. This eBook explores how AI Agents are shaping the future of work, from documentation to customer service, and how organizations can harness their power to drive meaningful change.



02. Introduction to AI Agents

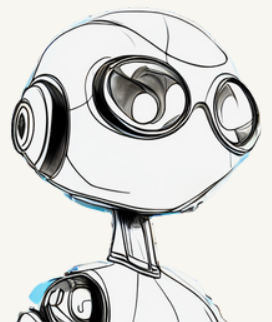
WHAT ARE AI AGENTS?

In the evolving digital workplace, AI Agents stand out as intelligent software systems designed to perform complex tasks autonomously. Unlike traditional automation, these agents operate with a flexible set of tools and instructions instead of a rigid set of steps and rules. If built within a properly-constructed, cognitive architecture, they continuously learn and adapt, evolving their capabilities as collaborative “co-workers” that bring machine learning (ML) and natural language processing (NLP) capabilities to tasks such as marketing, legal compliance, and customer service.

The AI Agent marketplace is being defined as we speak, but for the sake of a 101 overview of the landscape there are two distinct categories of AI Agents: **Autonomous Agents and Co-Worker Agents.**

AUTONOMOUS AGENTS

Autonomous Agents operate independently, making decisions and taking actions without human intervention. These agents can set their own goals based on overarching guidelines and adjust their activities to achieve optimized outcomes. They are often used in highly data-driven, operational environments and areas such as autonomous vehicles, financial trading bots, and complex supply chain management. They are ideal for tasks that are repeatable and scalable and don't require human interaction or collaboration.



CO-WORKER OR COLLABORATIVE AGENTS - OUR FOCUS OF THIS EBOOK

Co-Worker Agents work alongside humans as collaborative partners, enhancing decision-making and executable tasks without replacing human oversight. They offer suggestions, insights, or task-level automation within an extended workflow while keeping the user in control of interim decisions and final actions. For example, employing AI Co-Worker Agents is ideal for processing complex data and present choices while ultimately relying on humans to make the “final call”. AI Co-Workers are our new partners, maintaining a collaborative dynamic where humans and AI work together.

THE EVOLUTION OF AI IN THE WORKPLACE

AI in business has shifted from simple automation to intelligent collaboration, where AI Agents assist with decision-making, real-time insights, and strategic recommendations. A recent study by the University of Pennsylvania and OpenAI found that AI could streamline nearly half of professional tasks without sacrificing quality, paving the way for AI Agents as essential collaborators in the future of work.

WHY AI AGENTS MATTER IN MODERN WORKPLACES

- **Enhancing Adaptability:** They take on roles beyond repetitive tasks, such as supporting complex data analysis and process improvement.
- **Providing Data-Driven Decision Support:** AI Agents offer recommendations based on real-time data, enhancing the decision-making process.
- **Enabling Scalability:** Meet growing demands through increased throughput without proportional increases in headcount.

By integrating AI Agents, businesses gain a collaborative partner that augments human strengths and adapts to changing business needs.



03. Customizable AI for Unique Business Needs

DEFINING AND ADAPTING AGENT ROLES

Every business has unique documentation and operational needs and customizable AI Co-Worker Agents are designed to support specific workflows. By defining each AI Co-Worker Agent's role, organizations ensure alignment with departmental goals. Again, think of the Agents as your new co-worker. When we get new co-workers, there is a level of learning and "uploading" of data, policies, and procedures to get your colleague up to speed. This is no different with AI Agents, except it is much faster and parameters and boundaries can be set.

Let's create a team of AI Co-Workers Agents for a new business deal



SARAH
BUSINESS DEVELOPMENT



JAKE
CONTRACT ANALYST



MARTIN
CONTRACT ATTORNEY

EQUIPPING AI AGENTS WITH RELEVANT DATA

AI Co-Worker Agents become significantly more effective when equipped with organization-specific data, such as historical documents, policies, or guidelines. By leveraging this data, AI Co-Worker Agents gain a foundational understanding of the company's unique needs, language, and operational nuances, allowing them to operate as specialized collaborators rather than generalized tools. Providing your own organization's data is essential to developing an AI that not only completes tasks but also aligns with strategic objectives, adheres to company standards, and adapts to the company culture.



The effectiveness of an AI Co-Worker Agent depends heavily on the quality, depth, and relevance of the data provided. A well-informed AI Co-Worker Agent can interpret context, grasp subtle details, and provide insights that feel genuinely intuitive, almost as if it had years of experience within the organization. Onboarding an AI Co-Worker Agent is less about programming static instructions and more about creating a robust, ongoing knowledge base that it can continually reference and adapt from. The better its access to accurate, relevant data, the better it can assist with complex problem-solving, make nuanced recommendations, and provide support that feels seamless and natural within the workflow.

Our New Co-Worker's Onboarding:



Proper AI Co-Worker incorporation within a well-architected, cognitive architecture also sets the stage for continuous learning. With a strong foundation of initial data, AI Co-Worker Agents can begin to learn from real-time feedback, performance metrics, and additional datasets, becoming more attuned to the evolving dynamics of the organization. This approach transforms AI from a reactive tool to a proactive asset, capable of making decisions that align with long-term goals and adapting to the shifting landscape of the business. As a result, AI Co-Worker Agents with access to rich, contextual data truly become invaluable co-workers, contributing not just to efficiency but to strategic growth and innovation.



04. AI Co-Worker Agents: Documentation Collaboration

ENHANCING DOCUMENTATION THROUGH AI COLLABORATION

In fields like legal, marketing, and HR, documentation review, standards, and governance are crucial for consistency and compliance. AI Co-Worker Agents support these efforts by providing real-time feedback, maintaining accuracy, and improving productivity in document-heavy tasks. Rather than replacing human roles, our new Co-Workers elevate them, enabling teams to produce higher-quality work. For documentation purposes, AI Co-Worker Agents can comb through thousands of pages or more of contracts, documentation, or other sources to help surface the most relevant areas for the project or task, whereas humans can't do so at scale and rely on memory and search tools.

BENEFITS OF AI IN DOCUMENTATION

- **Efficiency and Precision:** AI Co-Worker Agents automate data-heavy tasks, allowing teams to draft and revise documents with speed and accuracy.
- **Scalability and Adaptability:** As organizations grow, AI Co-Worker Agents can handle expanding documentation needs without additional staff.
- **Context-Aware Recommendations:** AI Co-Worker Agents adapt based on specific departmental needs, tailoring their recommendations to each context, such as regulatory compliance or brand voice.



Our deal team has now been onboarded. Let's see how we work on a deal.

CONTRACT REVIEW TEAM



SARAH
BUSINESS DEVELOPMENT



JAKE
CONTRACT ANALYST



MARTIN
CONTRACT ATTORNEY

DOCUMENT CREATION AND REFINEMENT



CREATE DOCUMENTS WITH AGENTS OR
UPLOAD EXISTING DOCUMENTS FOR AGENT REVIEW



GET DRAFT DOCUMENT OR REDLINES FROM AI.
REFINE/EDIT WITH AI AND HUMAN COLLABORATION

AI CO-WORKER AGENTS CONTINUOUSLY LEARN AS EDITS
ARE ACCEPTED AND REJECTED

HUMAN-AI COLLABORATION IN ACTION

Deals aren't the only use case. AI Co-Worker Agents are transforming documentation processes across departments:

- **Legal:** AI Co-Worker Agents streamline contract drafting by flagging compliance risks and suggesting clause revisions.
- **Marketing:** AI Co-Worker Agents assist in content creation by analyzing audience data, helping marketers craft personalized messaging.
- **HR:** AI Co-Worker Agents support recruitment by screening applications and generating onboarding materials.

These examples illustrate the collaborative power of AI Agents, where human expertise meets AI-driven efficiency. In reality, any workflow that has document creation, editing, or review is a great way to use our AI Co-Worker Agents.



05. Success Stories of AI Co-Worker Agents

LEGAL: CONTRACT DRAFTING, REVIEW AND COMPLIANCE

A multinational organization deployed AI Co-Worker Agents for contract review, reducing processing time by 40%. The AI flagged deviations, risks, and redlines based on legal documentation and playbooks provided by the corporation, allowing the business team and legal team to work faster and address key issues.

The original concept of this is outlined in Chapters 3 and 4, but let's take it another step in the process that made this even more effective for the organization. Let's say we now want a specific workflow for our agents. In this scenario the organization wants its AI Co-Worker Agents to review specific contracts and after review email the recommendations and redlines to a specific group of individuals in the organization. From there, they then want to collaborate to determine the final redlines.

In this scenario we take our original AI Co-Worker Agent team and now add a new Agent, our **email expert**. In our setup we define the parameters of this agent to take the redlines performed by the current AI Co-Worker Agent team and then email the results to specific people in the organization. Once redlines are done by the team, this Agent now performs this task ongoing as part of the new workflow.



LINDSAY
EMAIL EXPERT



This is now what our new workflow looks like.

CONTRACT REVIEW TEAM



SARAH
BUSINESS DEVELOPMENT



JAKE
CONTRACT ANALYST



MARTIN
CONTRACT ATTORNEY



LINDSAY
EMAIL EXPERT

CONTRACT REVIEW WORKFLOW



CREATE DOCUMENTS WITH AGENTS OR
UPLOAD EXISTING DOCUMENTS FOR AGENT REVIEW



**OUR NEW EMAIL EXPERT AGENT
EMAILS REDLINES TO THE HUMAN TEAM FOR REVIEW**



GET DRAFT DOCUMENT OR REDLINES FROM AI.
REFINE/EDIT WITH AI AND HUMAN COLLABORATION

AI CO-WORKER AGENTS CONTINUOUSLY LEARN AS EDITS
ARE ACCEPTED AND REJECTED

Creating new AI Co-Worker Agents in Subatomic's platform is as seamless as this new use case to add an element of communications to the workflow. This is one example in the contract review process. The possibilities are endless in the legal space for this type of Human to AI collaboration utilizing AI Co-Worker Agents.



MARKETING: CONTENT CREATION AND OPTIMIZATION

A tech company used AI Co-Worker Agents to generate targeted content ideas, leading to a 25% engagement increase. AI recommendations based on audience data and personas helped the content team focus on storytelling while maintaining brand consistency.

In this scenario, the marketing team was able to not only create AI Co-Worker Agents that reflected roles on their team, but they were also able to create Agents that represented customer personas.

CONTENT TEAM



JANE
CAMPAIGN MANAGER



ANDY
COPYWRITER



JAMES
DATA SCIENTIST



JESSICA
DIGITAL CONTENT MANAGER

CONTENT CREATION PROCESS



ISSAC
CUSTOMER PERSONA ONE



EMMA
CUSTOMER PERSONA TWO

CREATE CUSTOMER PERSONA AGENTS, REPRESENTING
DEMOGRAPHIC TRAITS AND NEEDS OF YOUR CUSTOMERS



CREATE DOCUMENTS WITH AGENTS OR UPLOAD EXISTING DOCUMENTS
FOR AGENT REVIEW, WITH THE PERSPECTIVE OF YOUR PERSONAS



GET DRAFT DOCUMENT OR REDLINES FROM AI.
REFINE/EDIT WITH AI AND HUMAN COLLABORATION

AI CO-WORKER AGENTS CONTINUOUSLY LEARN AS EDITS
ARE ACCEPTED AND REJECTED



BENEFITS ACROSS INDUSTRIES

These success stories highlight the core benefits of AI Agents:

- **Enhanced Efficiency and Productivity**
- **Improved Accuracy and Compliance**
- **Scalability Without Sacrificing Quality**
- **Customization for Targeted Applications**

AI Co-Worker Agents provide targeted, customizable solutions that enhance efficiency across functions while supporting growth.

These examples show us not only how to do more with AI, but more importantly **how we can do better.**

With AI Co-Worker Agents we can now streamline work faster and BETTER. After reviewing these success stories, our hope is you start to think of use cases where this thinking can make an impact now. If you can't, we would love to find ways to utilize our agents....we know we can find some.

HERE IS OUR BATTLE TESTED PROCESS

01 - RESEARCH:

A research process that digs deep to help you pinpoint how & where AI can drive value

02 - PLANNING:

Proper planning and design are the foundation that ensure the right outcomes for the right audience at the right time

03 - DEVELOPMENT:

From utilizing our AI Agent technology to building custom tools and systems at any scale to integrating third-party platforms, we've got you covered

04 - ROLLOUT:

You built it. Will they come? We can help you make sure they do and that your solution continues to be maintained



06. The Future of AI Agents and Human Collaboration

ADVANCEMENTS IN AI-DRIVEN COLLABORATION

Future AI Co-Worker Agents will offer deeper natural language understanding, contextual awareness, and advanced decision-making capabilities. These improvements will further enhance their current ability to collaborate with humans and other AI Co-Workers alike, enabling AI Co-Worker Agents to handle even more complex tasks.

CROSS-DEPARTMENTAL COLLABORATION

AI Co-Worker Agents will soon evolve to support cross-functional projects, bridging departments like marketing, legal, and finance by integrating insights from multiple areas. This collaboration enables unified strategies aligned with business objectives, encouraging a holistic approach to problem-solving. The sooner organizations start implementing AI Co-Worker Agents, and thus integrating organizational data into workflows, the faster this will become a reality.

PREPARING TEAMS FOR HUMAN-AI COLLABORATION

To harness AI's full potential, organizations will need to build a workplace culture that supports human-AI collaboration. Training programs and workshops can equip employees with skills to leverage AI effectively, promoting innovation and adaptability (we provide this).

EMPOWERING A CULTURE OF INNOVATION AND AGILITY

AI Co-Worker Agents enable teams to focus on strategic tasks, fostering creativity, innovation, and agility in responding to new challenges. This partnership between human intelligence and AI enhances problem-solving, helping organizations stay competitive and resilient.



07. Embracing the Future with AI Agents as Collaborative Partners

AI Agents represent a shift toward a collaborative, future-focused approach to work. By enhancing human abilities and supporting informed decision-making, AI Agents are transforming documentation, compliance, customer service, and beyond. For organizations ready to adopt AI as a partner, these agents offer invaluable resources for growth, efficiency, and innovation.

As businesses look ahead, the question is not whether to use AI, but how best to integrate it as a collaborator. With AI Agents as partners, organizations can unlock new potential, aligning technology with human creativity to achieve success in a rapidly evolving world.

GET STARTED WITH SUBATOMIC

Subatomic's AI Agent Technology Platform develops your AI Co-Worker Agents tailored to your organization's specific workflows, seamlessly integrating into applications across marketing, legal, HR, and beyond. With Subatomic, your AI Agents become more than tools—they become essential co-workers, trained to match your business needs and designed to grow with you. Our AI Agent technology platform isn't an out of the box SaaS product, but a highly flexible and customizable solution to address your toughest challenges.



08. About Subatomic

At Subatomic, we combine innovation, expertise, and trust to deliver tech-enabled services that empower businesses to thrive with AI. We specialize in identifying, designing, building, and deploying transformative AI solutions that enhance workflows and scale performance. By strategically integrating AI into business processes, our clients achieve greater efficiency and a competitive edge. From consulting to custom AI Agents, Subatomic's solutions are tailored to meet real-world needs, ensuring every project is as impactful as it is seamless.

OUR HUMAN LEADERSHIP TEAM



SAM SOVA
CEO

Select Companies:

AT&T
Soluna
Johnson Controls
Fiserv



KARL SIMON
CTO

Select Companies:

Genentech
Hudson's Bay/Saks Fifth Ave
Komodo Health
Accenture



Ready to bring AI-powered co-workers to your team?

Let's build you some AI Co-Worker Agents

[REACH OUT FOR A DEMO](#)

