

Remote Access and Lifting Services

Mid Wales Telecom Build

Objectives

To provide a turnkey lifting and logistics package for the safe and efficient construction of a telecoms tower, including planning, permits, transport, pre-assembly, and contract lift operations, in full compliance with industry safety standards such as BS7121 and LOLER.

Our Solution

Aurora delivered a complete end-to-end service that included:

- Safe and Controlled Pre-Assembly – Crane-assisted assembly of frame sections at a central location to streamline final installation.
- Specialist Logistics and Transshipment – Secure transportation of large, delicate components using bespoke vehicles, padding, rigging, and weather proof protection.
- Contract Lift Execution – Deployment of cranes, lift supervisors, and qualified personnel to safely place frame sections on-site, supported by detailed lift planning, risk assessments, and method statements.

At a Glance

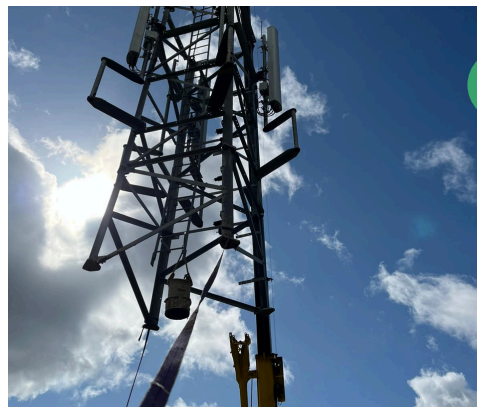
Challenges

- The project required specialist planning and execution to overcome:
- Safe transshipment of telecom tower components without damage
- Restricted access routes and the need for route planning to avoid obstacles and rough terrain
- Environmental factors such as weather and site ground conditions
- Tight coordination between logistics, lifting, and installation teams to minimise downtime and handling.

Value to client

Aurora's turnkey approach provided significant value by delivering a safe, compliant, and efficient end-to-end solution

- Reduced Risk & Admin Burden – A single provider managing all logistics, lifting, and compliance ensured streamlined communication and accountability.
- Safety & Quality Assurance – All works delivered to the highest safety standards, reducing the risk of delays, rework, or damage to critical components.
- Enhanced Connectivity – The successful installation of the tower expanded mobile frequency coverage, improving connectivity, data speeds, and user experience for residents and businesses.
- Future-Ready Infrastructure – The new tower supports 4G, 5G, and IoT deployment, driving digital inclusion and supporting economic growth in the community.



Contact Us


info@auroraenergy.co

auroraenergy.co