

The Biological Cost of the Three-Home Life

Microbiome Stability for the Philadelphia–
Naples–Palm Beach Circuit

PRECISION MEDICINE WHITEPAPER



PHILADELPHIA

NAPLES

PALM BEACH

Sam Banerjee, MD, FACG, FACP

Board-Certified Gastroenterologist & Longevity Physician
Founder, LongevIQ GI

Diagnostic protocols are individually tailored based on clinical assessment and evolve with your physiology. Testing specifications varied by membership level and detailed on website.

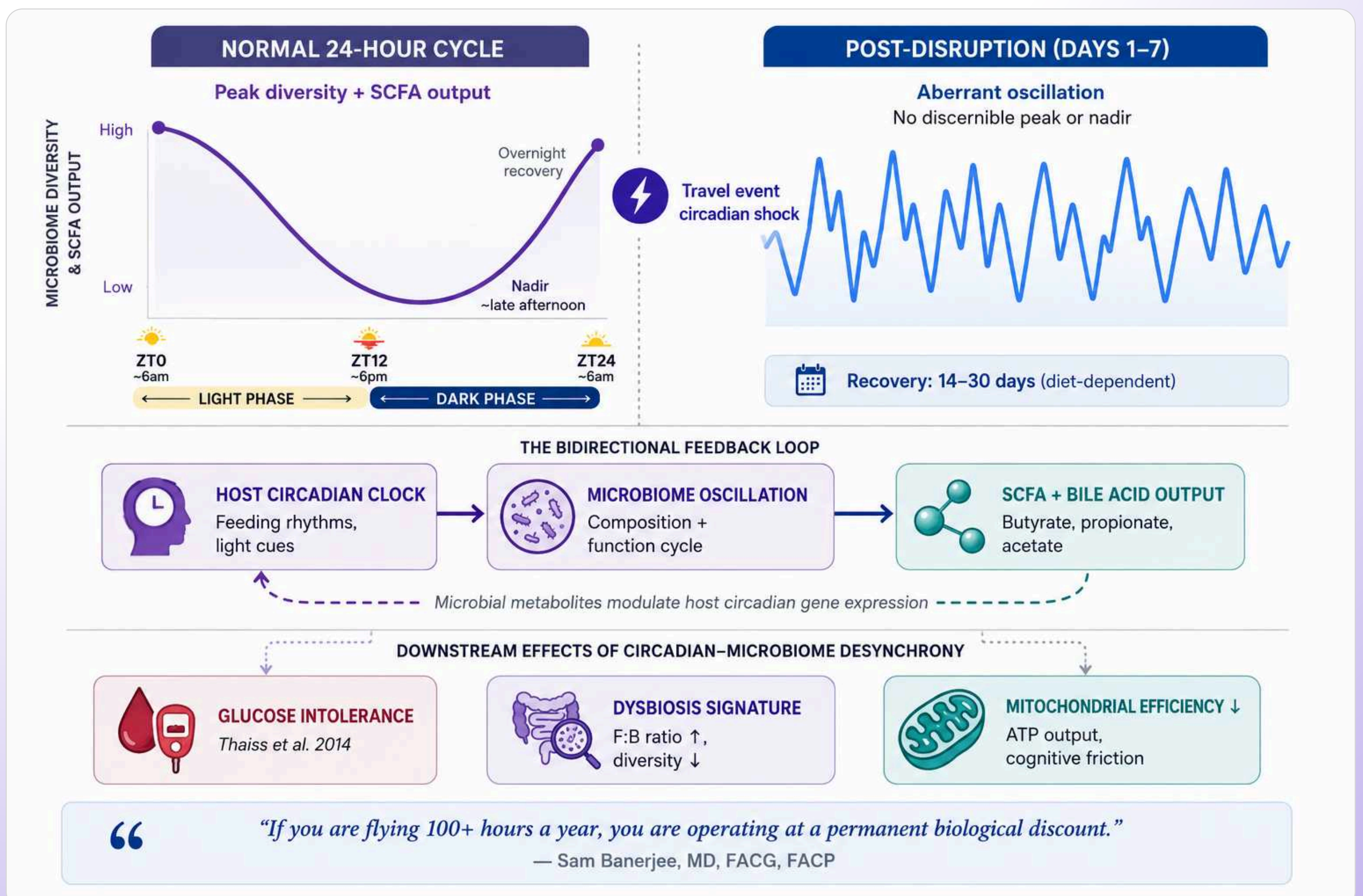
The most expensive part of your flight isn't the fuel or the crew—it's the initial 48-hour perturbation window your microbiome requires to begin stabilizing, the first phase of a recovery arc that, without intervention, runs 2–4 weeks. If you are flying 100+ hours a year across this circuit, you are operating at a permanent biological discount.

For the executive or family principal who splits the calendar between Philadelphia, Naples, and Palm Beach, that transition happens multiple times a year—sometimes monthly. The jet bridge, the climate shift, the change in diet and sleep schedule, the stress of compressed itineraries: each represents a perturbation event your gut ecosystem must absorb and recover from. When the frequency of those events outpaces the microbiome's recovery window, the cumulative deficit shows up not as GI symptoms, but as accelerated inflammatory tone, metabolic drift, and cognitive friction that most high-performers quietly attribute to age or stress.

This is not a wellness concern. It is a biological capital concern. Understanding the mechanisms—and the specific variables the Philadelphia–Naples–Palm Beach circuit introduces—allows for targeted mitigation rather than generic advice about eating well and staying hydrated.

What Air Travel Actually Does to Your Gut

The popular narrative frames inflight microbiome disruption around cabin pressure and recycled air. The evidence points elsewhere. The three operative mechanisms are circadian disruption, dietary and environmental change, and—for frequent international travelers—acquisition of antimicrobial-resistant organisms. The Philadelphia–Naples–Palm Beach route is domestic, which limits the third risk, but the first two operate on every flight regardless of distance.



The circadian-microbiome feedback loop

Thaiss et al. demonstrated in a landmark 2014 paper that jet lag induces aberrant diurnal oscillations in gut microbiota composition—disruptions sufficient to promote glucose intolerance and obesity, with effects transferable to germ-free mice via fecal transplant. This is not a minor finding. It established that host circadian rhythm and microbiome composition are bidirectionally coupled: the microbiome oscillates in composition and function according to feeding rhythms, and when those rhythms are disrupted—as occurs with transmeridian travel—the ecosystem destabilizes.

Chronic circadian misalignment in murine models decreases microbial abundance, richness, and diversity; increases the Firmicutes-to-Bacteroidetes ratio (a recognized dysbiosis marker); and alters tryptophan and secondary bile acid metabolism. A 2025 systematic review confirmed these directional findings in humans, though diversity metrics remain variable across studies. The bidirectionality matters: microbial metabolites including short-chain fatty acids and bile acids modulate host circadian gene expression. Disrupt the host clock, and the microbiome destabilizes. Destabilize the microbiome, and the host clock's resilience weakens. The feedback loop can self-perpetuate.

Dietary environment as a second perturbation axis

International travel literature provides the most granular data here. A metagenomic analysis of 267 US travelers found significant depletion of microbial diversity and enrichment of Enterobacteriaceae after travel, with 67% of subjects acquiring phylogenetically distinct new *E. coli* strains. Antibiotic resistance gene burden increased by a median of 15%. The Philadelphia–Naples–Palm Beach circuit does not expose the traveler to the pathogenic microbe profile of developing regions, but the dietary discontinuity—restaurant frequency, alcohol, altered meal timing, reduced prebiotic fiber intake—operates through identical mechanisms at a lower magnitude.

What Makes This Circuit Clinically Distinct

The Philadelphia–Naples–Palm Beach transition is not a single disruption event. For someone making this transition four to eight times annually across both Southwest Florida and the Palm Beach corridor, it is a recurring oscillation that the microbiome must absorb repeatedly, often without full recovery between cycles. Several variables compound the generic travel disruption:

Climate and dietary environment

Philadelphia and the Southwest Florida and Palm Beach corridor represent meaningfully different food environments. The Mediterranean-influenced dietary patterns more accessible in Philadelphia—high-quality olive oil, diverse vegetables, legume-forward eating—shift toward the restaurant-heavy, higher-alcohol, lower-fiber consumption patterns typical of seasonal life in Naples or Palm Beach. This is not absolute, but it is a directional reality for most high-net-worth households in that corridor. Every reduction in prebiotic fiber intake directly reduces SCFA production—particularly butyrate—which is the primary fuel for colonocytes and the upstream regulator of intestinal barrier integrity and systemic inflammatory tone.

Sleep architecture and schedule compression

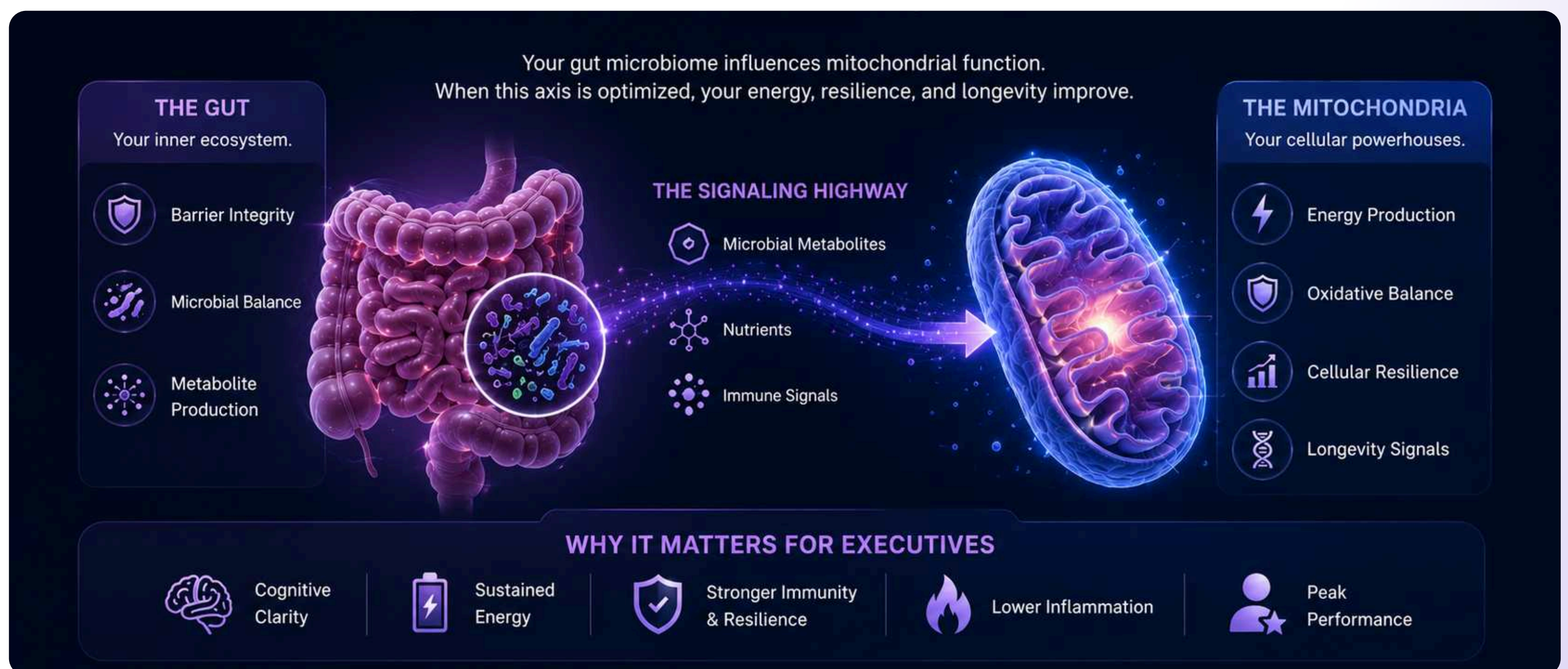
The Philadelphia–Naples–Palm Beach transition is typically embedded in a compressed itinerary—departures timed around board meetings, closings, or social calendars. Sleep architecture disruption, even without transmeridian jet lag, is sufficient to shift the Firmicutes-to-Bacteroidetes ratio. A single night of poor sleep alters microbiome composition in ways measurable by morning. Over four to six transition events per year across both Florida markets, the cumulative effect on microbial diversity is not trivial.

The recovery window problem

A longitudinal study of travelers to the Caribbean found that gut microbial composition gradually shifted toward local enterotypes during extended stays, then reverted to original profiles within one month of returning home—mediated primarily by dietary normalization. The microbiome is resilient. But one month of recovery assumes the traveler stays home for a month. For the executive rotating quarterly across Philadelphia, Naples, and Palm Beach, the recovery window closes before the next transition opens.

The Gut–Mitochondria Axis: Why This Is an Executive Health Optimization Problem

Most travel health frameworks stop at the gut. The clinical picture extends further. The gut microbiome and mitochondrial function are bidirectionally coupled through a set of mechanisms that make travel-induced dysbiosis directly relevant to cognitive performance and metabolic output — not just digestive comfort.



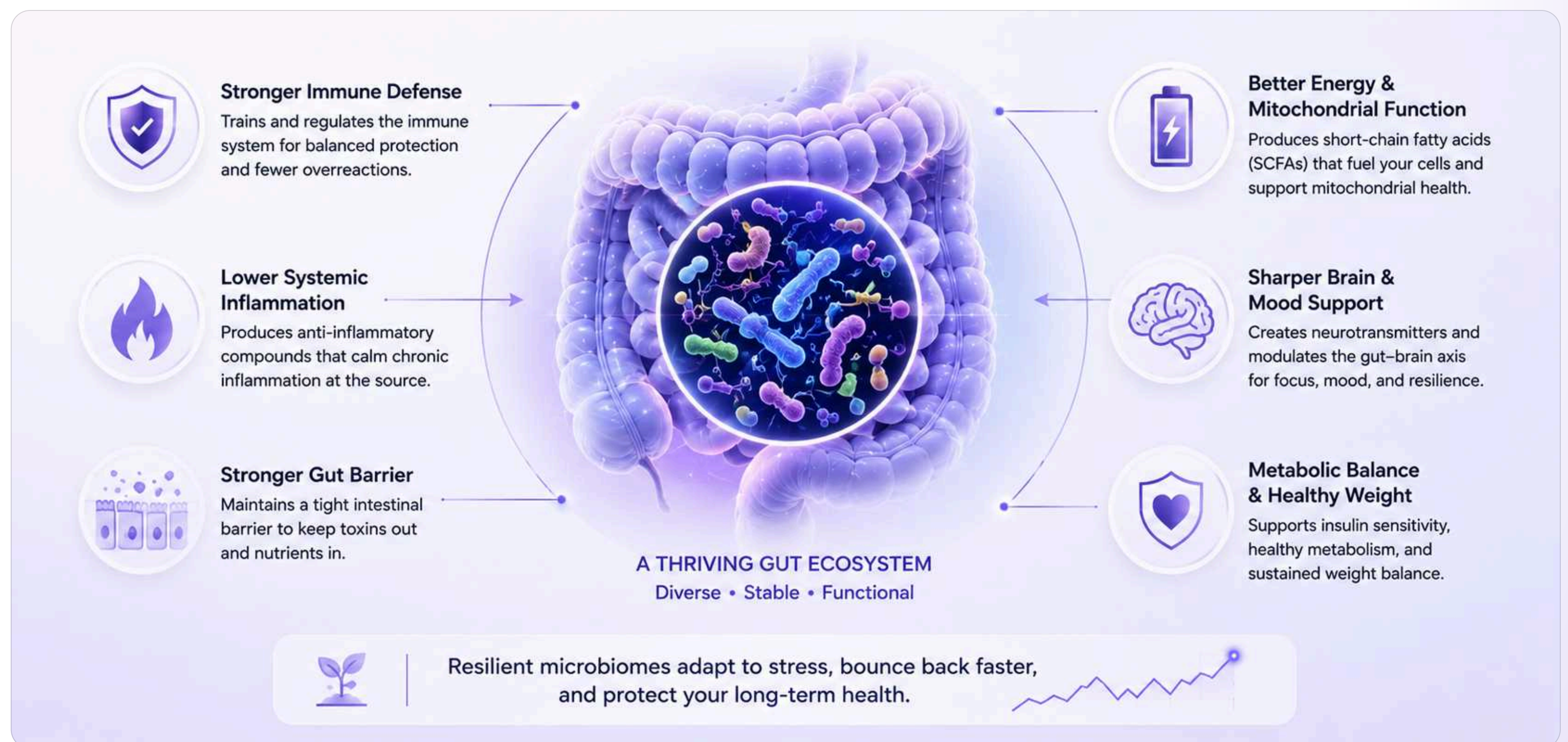
Butyrate—the primary short-chain fatty acid produced by beneficial gut bacteria fermenting prebiotic fiber—stimulates mitochondrial biogenesis through PGC-1 α activation and enhances oxidative phosphorylation efficiency. When butyrate-producing taxa are depleted by travel-associated dietary disruption and circadian desynchrony, the downstream consequence is measurably reduced mitochondrial ATP output. This is not a theoretical pathway. It is the mechanism by which gut dysbiosis translates into the cognitive friction and physical fatigue that frequent travelers normalize as the cost of doing business.

The second mechanism is barrier-mediated inflammation. Gut barrier failure—accelerated by the dietary shifts and circadian disruption of repeated travel—allows bacterial lipopolysaccharide to enter systemic circulation. The resulting inflammatory cytokine load directly reduces mitochondrial ATP efficiency and shifts cellular metabolism toward less efficient glycolytic pathways. Mitochondrial supplements including CoQ10 and NAD⁺ precursors demonstrate measurably reduced efficacy when gut dysbiosis persists—a finding with direct implications for the significant supplement expenditure common among health-conscious executives. You cannot optimize the downstream system while the upstream regulator remains compromised.

For the executive running consequential decisions across three markets, a reduction in mitochondrial ATP efficiency is not an abstraction. It is the biological substrate of slower processing speed, reduced working memory capacity, and diminished stress tolerance. The Philadelphia–Naples–Palm Beach circuit, unmanaged, creates exactly those conditions on a recurring basis.

What Resilient Microbiomes Do Differently

The athletes studied in the Irish cricket cohort—an elite group with high baseline fitness and structured nutritional support—still showed reductions in alpha diversity and shifts in taxonomic profiles following travel. Fitness and general health do not confer microbiome resilience. What does?



Pre-travel microbial diversity is the primary buffer variable. Higher baseline diversity correlates with faster compositional recovery after perturbation events. This is the ecological stability principle applied to the gut: diverse ecosystems absorb disruption more effectively than simplified ones because functional redundancy—multiple species capable of performing the same metabolic tasks—maintains critical outputs (butyrate production, barrier integrity) even as individual species populations fluctuate.

Butyrate-producing taxa, specifically *Faecalibacterium prausnitzii*, *Akkermansia muciniphila*, Christensenellaceae, and Ruminococcaceae, are the functional anchors. Their depletion is the earliest measurable signal of travel-induced dysbiosis, and their preservation is the primary objective of any pre- and peri-travel biological resilience strategy.

A Clinical Protocol for the Philadelphia–Naples–Palm Beach Traveler

The following is structured around the three phases where clinical intervention has demonstrable impact.

Phase 1: Pre-Departure (72 Hours)

- 1. Maximize prebiotic fiber intake.** Target 30–35g daily in the 72-hour pre-departure window. Emphasize inulin-rich foods (chicory, leeks, asparagus, garlic) and resistant starch (cooked-and-cooled legumes, oats). This is not about acute supplementation—it is about loading the substrate your butyrate-producers need to maintain output during the dietary disruption ahead.

- 2. Anchor your sleep schedule.** Even a 90-minute deviation from your habitual sleep onset in the 48 hours before travel measurably shifts circadian gene expression. Protect sleep architecture in the pre-departure window more aggressively than you think necessary.
- 3. Eliminate alcohol for 72 hours pre-flight.** Alcohol directly reduces *Lactobacillus* and *Bifidobacterium* populations and increases intestinal permeability within 24 hours of consumption. Starting a travel transition with a compromised barrier compounds every downstream perturbation.

Phase 2: In Transit and Arrival (Day 0–2)

- 4. Eat to your destination time zone from wheels-up.** Meal timing is the primary zeitgeber for gut microbiome circadian entrainment. Align your first meal in Naples or Palm Beach with local breakfast time regardless of when you landed. This is the single highest-leverage circadian intervention available without pharmaceutical support.
- 5. Prioritize hydration and fiber on arrival day.** Cabin humidity of 10–20% creates measurable mucosal dehydration. Gastric emptying rate and mucosal defense both decline. Arrival day nutrition should prioritize vegetables, legumes, and water over the social dinner calendar.
- 6. Morning light exposure at destination.** Twenty minutes of outdoor light exposure before 9am at your destination accelerates circadian resynchronization—and by extension, microbiome diurnal rhythm normalization. This is not optional for frequent travelers; it is the fastest non-pharmacological tool for dampening the circadian-microbiome feedback disruption.

Phase 3: Stabilization (Days 3–7 at Destination)

- 7. Reconstruct your fiber baseline.** The Southwest Florida and Palm Beach food environment does not automatically deliver adequate prebiotic substrate. Build deliberate structure: daily legume serving, diverse vegetable intake at every meal, polyphenol loading through extra virgin olive oil and berries. A Mediterranean-pattern dietary floor is achievable in Naples or Palm Beach; it requires intention, not sacrifice.
- 8. Protect sleep architecture for the full first week.** Microbiome compositional recovery is largely diet-driven, but sleep normalization determines the rate. Late social schedules in the first week of a transition are a biological liability—the compounding cost is real even if invisible on any single night.
- 9. Targeted probiotic use only if indicated.** *Saccharomyces boulardii* (250–500mg twice daily for 7 days post-travel) has the strongest evidence for reducing travel-associated microbiome perturbation. It is not a preventive supplement for healthy travelers—it is a post-perturbation tool with specific indication. Do not substitute it for the dietary interventions above.

The Longevity Perspective

The Philadelphia–Naples–Palm Beach circuit is an asset—the ability to operate across three distinct environments is a function of success, not a problem to be solved. The clinical goal is not to eliminate travel but to prevent the cumulative biological cost of recurring unmanaged perturbation from expressing itself years earlier than it otherwise would.

What we are protecting is not gut comfort. We are protecting butyrate production, which sustains intestinal barrier integrity, which governs systemic inflammatory tone, which is upstream of mitochondrial efficiency, cognitive performance, and biological age acceleration. The microbiome is not a peripheral wellness variable—it is the regulator of the biological systems that determine how you age.

If you are making this transition more than four times annually across the Southwest Florida and Palm Beach corridor and have not formally assessed your baseline microbiome composition, inflammatory markers, and gut barrier function, you are managing a consequential biological asset without a dashboard. The diagnostic work is straightforward. The window to intervene early—before the cumulative deficit becomes clinically visible—is finite.

For families maintaining residences across Pennsylvania, Florida, and Texas, LongevIQ GI offers a structured assessment of baseline microbiome composition, barrier integrity, and inflammatory markers—the diagnostic foundation for any travel resilience protocol. Discovery consultations are available by application.

Dr. Banerjee is a board-certified gastroenterologist with over 15 years of clinical experience, peer-reviewed publications indexed in PubMed, and deep expertise in gut microbiome science. He advises high-achieving individuals and families on precision longevity and healthspan optimization across Pennsylvania, Florida, and Texas. Expanded clinical analysis is available through the **Private Longevity Briefing**.

Selected References

1. Thaiss CA, Zeevi D, Levy M, et al. Transkingdom control of microbiota diurnal oscillations promotes metabolic homeostasis. *Cell*. 2014;159(3):514-529. doi:10.1016/j.cell.2014.09.048.
2. Matenchuk BA, Mandhane PJ, Kozyrskyj AL. Sleep, circadian rhythm, and gut microbiota. *Sleep Medicine Reviews*. 2020;53:101340. doi:10.1016/j.smr.2020.101340.
3. Li Q, Wang B, Qiu HY, et al. Chronic jet lag exacerbates jejunal and colonic microenvironment in mice. *Frontiers in Cellular and Infection Microbiology*. 2021;11:648175. doi:10.3389/fcimb.2021.648175.
4. Olson M, Withrow D, Koelbel M, et al. What is the nature of sleep and circadian rhythm health on gastrointestinal microbiota? *Sleep Medicine Reviews*. 2026;86:102256. doi:10.1016/j.smr.2026.102256.
5. Bautista J, Ojeda-Mosquera S, Altamirano-Colina A, et al. Bidirectional interactions between circadian rhythms and the gut microbiome. *Applied Microbiology and Biotechnology*. 2025;109(1):218. doi:10.1007/s00253-025-13570-7.
6. DuPont HL. Microbiome alterations during and after international travel. *Journal of Travel Medicine*. 2025. doi:10.1093/jtm/taaf114.
7. Worby CJ, Sridhar S, Turbett SE, et al. Gut microbiome perturbation, antibiotic resistance, and *Escherichia coli* strain dynamics associated with international travel. *The Lancet Microbe*. 2023;4(10):e790-e799. doi:10.1016/S2666-5247(23)00147-7.
8. Boolchandani M, Blake KS, Tilley DH, et al. Impact of international travel and diarrhea on gut microbiome and resistome dynamics. *Nature Communications*. 2022;13(1):7485. doi:10.1038/s41467-022-34862-w.
9. O'Donovan CM, Connor B, Madigan SM, Cotter PD, O'Sullivan O. Instances of altered gut microbiomes among Irish cricketers over periods of travel. *Travel Medicine and Infectious Disease*. 2020;35:101553. doi:10.1016/j.tmaid.2020.101553.
10. Cheng M, Liu H, Han M, et al. Microbiome resilience and health implications for people in half-year travel. *Frontiers in Immunology*. 2022;13:848994. doi:10.3389/fimmu.2022.848994.



Precision Applied to the Biology That Matters Most

LongevIQ GI delivers physician-directed longevity care focused on the physiological systems with the greatest influence on biological aging.

 www.longeviqgi.com

 elitecare@longeviqgi.com