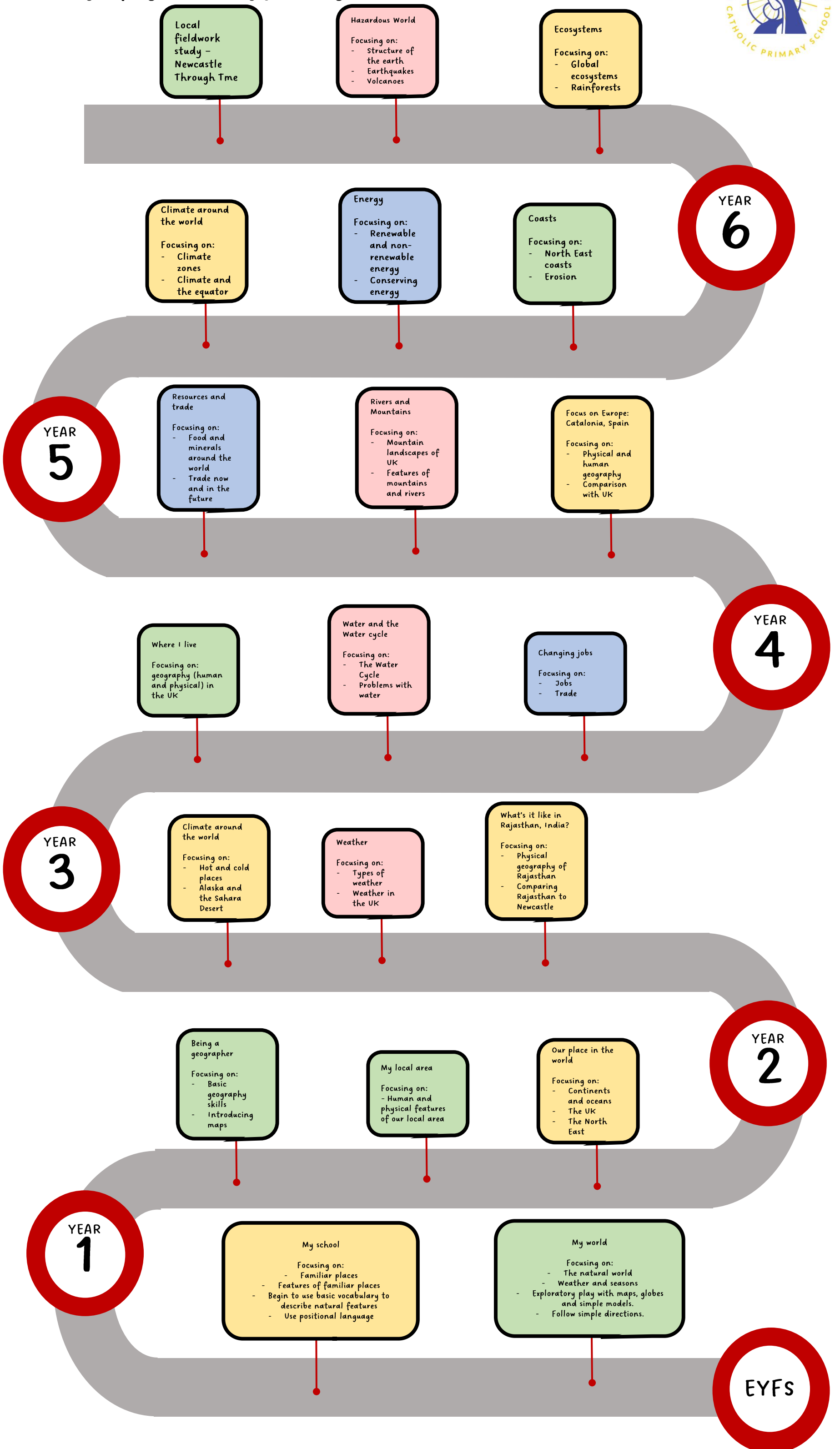


# Our Lady and St Anne's Subject Map: Geography



Our Geography learning journey:



Key: Local study  Comparison  Physical geography  Human geography

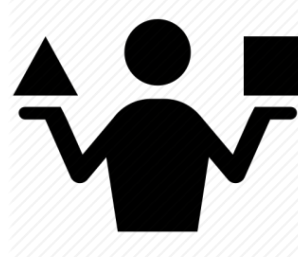
# Key components of our Geography curriculum:



Using maps – we read and interpret a range of maps, globes and atlases (including satellite imagery and digital maps).



Using data – we use and interpret different kinds of data (tables, charts, graphs) of increasing difficulty to look at patterns and trends.



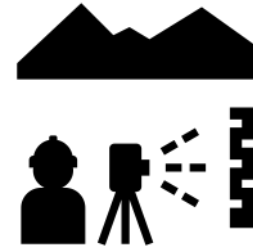
Comparison – we develop skills to compare our local area with contrasting areas of Britain and other parts of the world (including climate, jobs, trade and features)



Vocabulary – we develop the use of geographical vocabulary to describe physical and human features of different areas.



Inquiry – we observe, ask questions and record findings about our local environment and the wider world.



Field work – we explore our local area to answer questions, collect data (taking photographs, sketching) to draw conclusions and present findings.

## Our key learning questions:

EYFS	My world		My school	
	<ul style="list-style-type: none"> <li>- What similarities and differences can we see about countries?</li> <li>- How is life the same and different around the world?</li> <li>- What places are special to people around the world?</li> </ul>		<ul style="list-style-type: none"> <li>- What can maps tell us?</li> <li>- What does the natural world around me tell me?</li> <li>- How do things change over the seasons?</li> <li>- How are some environments different?</li> </ul>	
YEAR 1	Being a geographer: <ul style="list-style-type: none"> <li>- What is geography?</li> <li>- How can we be a good geographer?</li> <li>- What can a map tell us?</li> </ul>	My local area: <ul style="list-style-type: none"> <li>- What different types of settlement are there?</li> <li>- What kind of settlement do I live in?</li> <li>- What physical and human features are there where I live?</li> </ul>	Our place in the world: <ul style="list-style-type: none"> <li>- What different continents are there?</li> <li>- What are the names of the oceans?</li> <li>- What countries make up the UK?</li> <li>- Where is the North East and what is there here?</li> </ul>	
YEAR 2	What's it like in Rajasthan, India?: <ul style="list-style-type: none"> <li>- Where is Rajasthan located on a map?</li> <li>- What are the physical features of Rajasthan?</li> <li>- How is life different in Rajasthan compared to the UK?</li> </ul>	Weather: <ul style="list-style-type: none"> <li>- What different kinds of weather are there?</li> <li>- What is the weather in the UK like?</li> <li>- What is the link between weather and seasons?</li> <li>- How can we investigate the weather?</li> </ul>	Climate around the world: <ul style="list-style-type: none"> <li>- Why are some places hot and cold around the world?</li> <li>- What is the climate like in Alaska? How does it affect life?</li> <li>- What is the climate like in the Sahara Desert? How does it affect life?</li> </ul>	
YEAR 3	Where I live: <ul style="list-style-type: none"> <li>- What can a map tell me and how can it help me?</li> <li>- What are villages, towns and cities?</li> <li>- What are the differences between rural and urban areas?</li> </ul>	Weather and the Water Cycle: <ul style="list-style-type: none"> <li>- What is the water cycle?</li> <li>- How do we use water in the world?</li> <li>- What problems do we face with water and how can we solve them?</li> </ul>	Jobs: <ul style="list-style-type: none"> <li>- What types of jobs are there?</li> <li>- How are jobs changing? Why?</li> <li>- How have jobs in Newcastle changed over time?</li> <li>- What jobs might there be in the future?</li> </ul>	
YEAR 4	Focus on Catalonia, Spain: <ul style="list-style-type: none"> <li>- Where is Catalonia on a map?</li> <li>- What is the physical geography of Catalonia?</li> <li>- What is the climate?</li> <li>- How does Catalonia compare to the UK?</li> </ul>	Rivers and mountains: <ul style="list-style-type: none"> <li>- What mountain landscapes do we have in the UK?</li> <li>- What are the features of mountain landscapes?</li> <li>- How are rivers formed?</li> <li>- What are landforms?</li> </ul>	Resources and trade: <ul style="list-style-type: none"> <li>- What are resources?</li> <li>- Which places in the world don't have access to food and water?</li> <li>- What are minerals?</li> <li>- What does the UK trade?</li> </ul>	
YEAR 5	Climate around the world: <ul style="list-style-type: none"> <li>- What is the equator and where is it?</li> <li>- What are climate zones and where would they be found on a map?</li> <li>- How do hot deserts, temperate climates and cold environments differ?</li> </ul>	Energy: <ul style="list-style-type: none"> <li>- How do we use energy?</li> <li>- What different types of non-renewable and renewable energies are there?</li> <li>- How can we save energy?</li> </ul>	Coasts: <ul style="list-style-type: none"> <li>- What is a coastline?</li> <li>- What is erosion?</li> <li>- Why does erosion cause problems?</li> <li>- What kinds of risks are there when completing fieldwork?</li> </ul>	
YEAR 6	Ecosystems: <ul style="list-style-type: none"> <li>- What are some global ecosystems and where would they be found on a map?</li> <li>- What is an ecosystem?</li> <li>- What are the natural features of rainforests?</li> <li>- How is the rainforest used?</li> <li>- What problems does the rainforest face?</li> </ul>	Hazardous world: <ul style="list-style-type: none"> <li>- What are the different layers of the earth?</li> <li>- What are plate boundaries?</li> <li>- What causes earthquakes?</li> <li>- What are volcanoes?</li> <li>- How can we protect ourselves against hazards?</li> </ul>	Local field study:	

Key: Local study  Comparison  Physical geography  Human geography

## Unit overviews

EYFS	<b>My world</b> <ul style="list-style-type: none"> <li>- Looking at where we live</li> <li>- Exploring different countries around the world</li> <li>- How is life the same and different around the world?</li> <li>- Special places to me</li> <li>- Special places to people around the world</li> </ul>	<b>My school</b> <ul style="list-style-type: none"> <li>- Looking at our local environment</li> <li>- Starting to explore maps and globes</li> <li>- Weather</li> <li>- Changes in the seasons</li> <li>- Exploring different environments</li> </ul>	
1	<b>Being a Geographer</b> <ul style="list-style-type: none"> <li>- What is Geography?</li> <li>- How to be a good Geographer</li> <li>- Introducing Maps</li> <li>- Geography detective</li> </ul>	<b>My Local Area</b> <ul style="list-style-type: none"> <li>- Settlements in the UK</li> <li>- Where do I live?</li> <li>- Human and physical features of where I live (FW)</li> </ul>	<b>Our place in the World</b> <ul style="list-style-type: none"> <li>- Where are we in the world?</li> <li>- Continents and oceans</li> <li>- The United Kingdom</li> <li>- The North East region</li> </ul>
2	<b>What's it like in Rajasthan, India</b> <ul style="list-style-type: none"> <li>- Where is Rajasthan?</li> <li>- The physical geography of Rajasthan</li> <li>- Life in Rajasthan</li> <li>- How does Rajasthan compare to the UK?</li> </ul>	<b>Weather</b> <ul style="list-style-type: none"> <li>- Different types of weather</li> <li>- The four seasons</li> <li>- Weather in the UK</li> <li>- Investigating the weather (FW)</li> </ul>	<b>Climate around the world</b> <ul style="list-style-type: none"> <li>- Hot and cold places</li> <li>- Focus on cold places - Alaska</li> <li>- Focus on hot places - Sahara Desert</li> </ul>
3	<b>Where I live</b> <ul style="list-style-type: none"> <li>- The UK's place in the world</li> <li>- H&amp;P Geog of the UK</li> <li>- Cities in the UK</li> <li>- Villages in the UK</li> </ul>	<b>Water and the Water cycle</b> <ul style="list-style-type: none"> <li>- The water cycle</li> <li>- Who uses water</li> <li>- Problems with water</li> <li>- Solving the water problem</li> </ul>	<b>Changing jobs</b> <ul style="list-style-type: none"> <li>- Different type of jobs</li> <li>- How jobs are changing</li> <li>- Who do we trade with?</li> <li>- Jobs for the future</li> </ul>
4	<b>Focus on Europe, Catalonia Spain</b> <ul style="list-style-type: none"> <li>- Where is Catalonia?</li> <li>- Physical features of Catalonia</li> <li>- Climate in Catalonia</li> <li>- Human geography of Catalonia</li> <li>- Comparing Catalonia with the UK</li> </ul>	<b>Rivers and Mountains</b> <ul style="list-style-type: none"> <li>- Mountain landscapes in the UK</li> <li>- Features of mountain landscapes</li> <li>- Long profile of the river</li> <li>- River landforms</li> </ul>	<b>Resources and Trade</b> <ul style="list-style-type: none"> <li>- Food around the world</li> <li>- Minerals around the world</li> <li>- Who do we trade with?</li> <li>- Trading in the future</li> </ul>
5	<b>Climate around the World</b> <ul style="list-style-type: none"> <li>- Understanding climate and the equator</li> <li>- Climate zones around the world</li> <li>- Hot deserts</li> <li>- Temperate climates</li> <li>- Cold environments</li> </ul>	<b>Energy</b> <ul style="list-style-type: none"> <li>- Why do we need energy?</li> <li>- Non-renewable energy - what's the problem?</li> <li>- Renewable energy - looking to the future</li> <li>- Conserving energy</li> </ul>	<b>Coasts</b> <ul style="list-style-type: none"> <li>- The NE coast</li> <li>- Famous coastlines</li> <li>- Erosion at the coast</li> <li>- The disappearing coast</li> </ul>
6	<b>Ecosystems (including focus on South America).</b> <ul style="list-style-type: none"> <li>- Global ecosystems</li> <li>- What is an ecosystem?</li> <li>- Physical features of the RF</li> <li>- Human features of the RF</li> <li>- Future of the RF</li> </ul>	<b>Hazardous world</b> <ul style="list-style-type: none"> <li>- Structure of the earth</li> <li>- Plate boundaries</li> <li>- Earthquakes</li> <li>- Volcanoes</li> <li>- Protecting against hazards</li> </ul>	<b>Local fieldwork study</b> <ul style="list-style-type: none"> <li>- The cycle of enquiry</li> <li>- Conducting research</li> <li>- Presenting my findings</li> <li>- Analysing and making conclusions</li> <li>- Evaluating my research</li> </ul>

Key: Local study  Comparison  Physical geography  Human geography

## Useful texts to use

