

PortfolioAnalyst



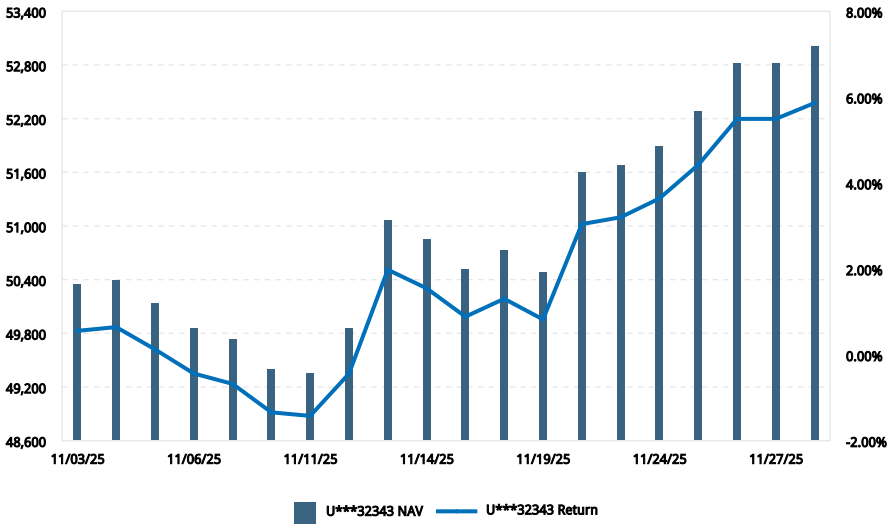
✓ Account Overview	3
✓ Risk Measures	4
✓ Notes and Disclosure	5

NAME: Bifin Sarl
ACCOUNT: U***32343
ACCOUNT TYPE: Separate Trading Limit

PERFORMANCE MEASURE
TWR
BASE CURRENCY
EUR

Net Asset Value

Cumulative Return



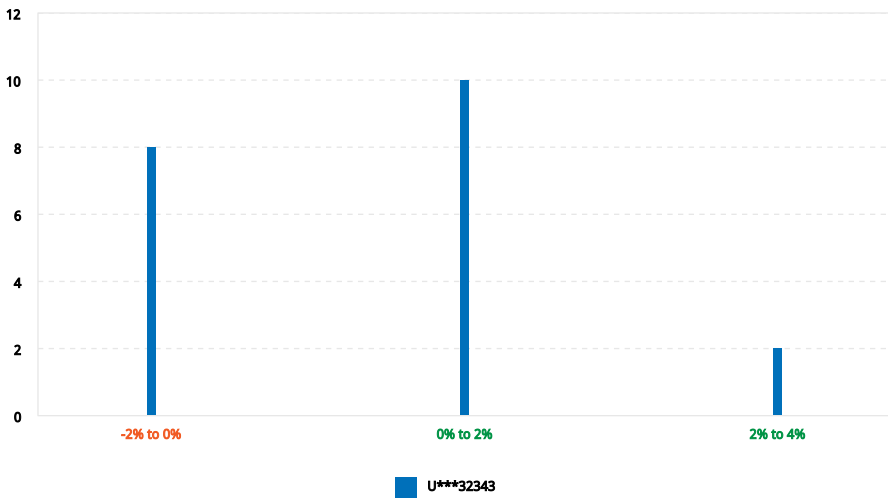
Key Statistics

5.87%	2.58%	4.25%	2.43%	-0.67%
CUMULATIVE RETURN	5 DAY RETURN	10 DAY RETURN	BEST RETURN	WORST RETURN
11/03/25 - 11/28/25	11/24/25 - 11/28/25	11/17/25 - 11/28/25	11/13/25	11/10/25

Beginning NAV	50,072.42	Max Drawdown	2.06%
MTM	3,788.34	Peak-To-Valley	11/04/25 - 11/11/25
Deposits & Withdrawals	0.00	Sharpe Ratio	5.21
Dividends	50.38	Standard Deviation	0.85%
Interest	16.72		
Fees & Commissions	-704.54		
Other	-213.93		
Ending NAV	53,009.39		
Change In NAV	2,936.98		

Top Performers	Value	CTR (%)	Bottom Performers	Value	CTR (%)
RXO	0.00	1.13	AREC	0.00	-1.52
PENN	0.00	0.92	USD	10,217.83	-1.03
STKL	0.00	0.87	EUR	49,068.03	-0.78
AIN	0.00	0.72	AMRK	0.00	-0.51
TPC	0.00	0.66	LPX	0.00	-0.49

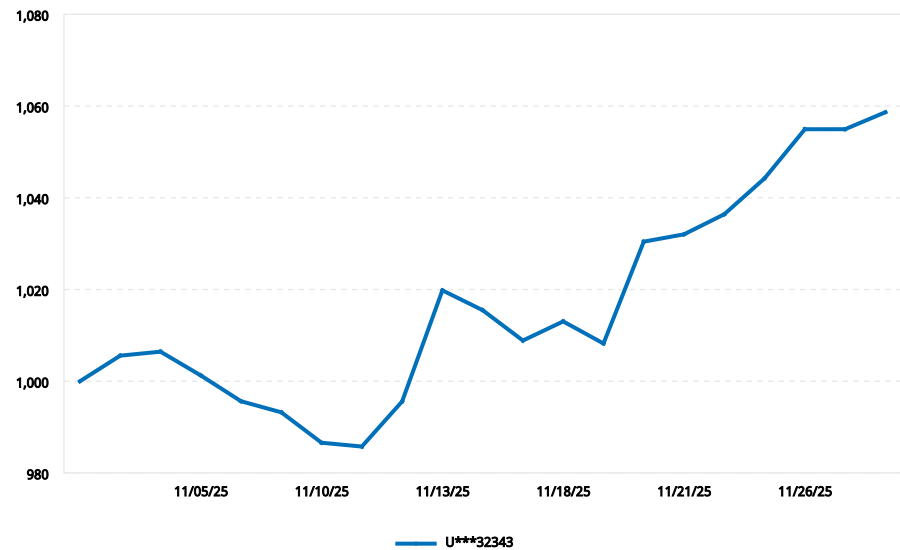
Distribution of Returns



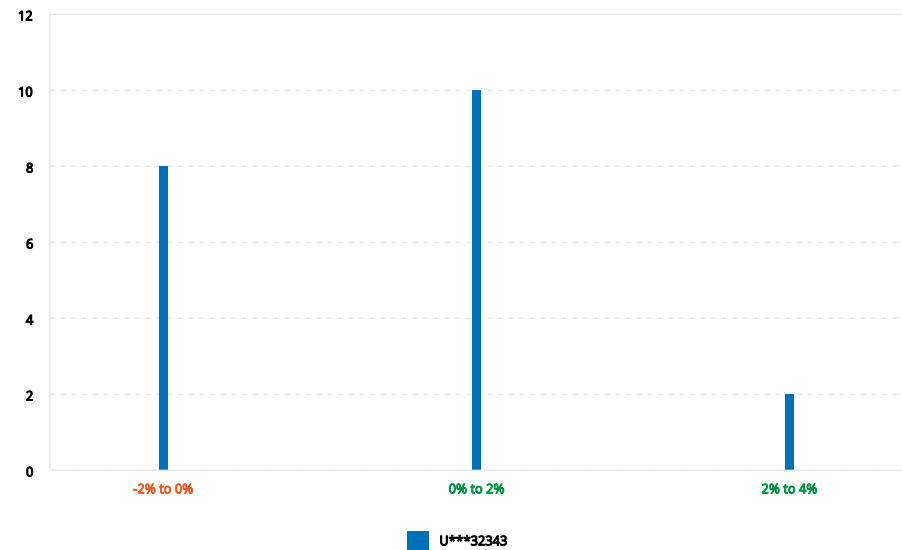
Allocation

Financial Inst.	Long	(%)	Financial Inst.	Short	(%)
Cash	59,420.53	100.00	Stocks	-6,276.47	97.90
Total	59,420.53	100.00	Cash	-134.67	2.10
			Total	-6,411.13	100.00
Asset Class	Long	(%)	Asset Class	Short	(%)
Cash	59,420.53	100.00	Equities	-6,276.47	97.90
Total	59,420.53	100.00	Cash	-134.67	2.10
			Total	-6,411.13	100.00

Value Added Monthly Index (VAMI)



Distribution of Returns



Risk Measures

U***32343	
Ending VAMI	1,058.65
Max Drawdown	2.06%
Peak-To-Valley	11/04/25 - 11/11/25
Recovery	2 Days
Sharpe Ratio	5.21
Sortino Ratio	13.89
Standard Deviation	0.85%
Downside Deviation	0.32%
Mean Return	0.29%
Positive Periods	12 (60.00%)
Negative Periods	8 (40.00%)

General Notes

1. The Net Asset Value (NAV) consists of all positions by financial instrument (stock, securities options, warrants, bonds, cash, etc.). All non-base currency amounts are converted to the base currency at the close of period rate.
2. The gain or loss from future contracts settle into cash each night. The notional value is used when computing the contribution to return.
3. Dividend accruals, interest accruals, and insured deposits are included in cash amounts throughout the report.
4. Price valuations are obtained from outside parties. Interactive Brokers shall have no responsibility for the accuracy or timeliness of any such price valuation.
5. Data from Thomson Reuters Business Classifications and Lipper Global is used to derive our sector classifications. Funds with assorted sector allocations are classified as Broad.
6. Amounts are formatted to two decimal places. If amounts are greater than two decimal places, Interactive Brokers uses "half-even" rounding. This means that Interactive Brokers rounds such amounts up to the nearest even number.
7. For accounts opened and funded before 2009, reports with a time period of Since Inception will only include data going back to January 1, 2009. This includes some default reports and both Historical Performance reports.
8. If you have elected to trade cryptocurrency/digital asset products at Crypto Provider through the Interactive Brokers platform, for your convenience your positions in your linked account at Crypto Provider are reflected in PortfolioAnalyst in connection with your Interactive Brokers account.

Section Specific Notes

1. Account Overview: The deposit/withdrawal amount displayed includes internal transfers along with cash and position transfers.
2. Risk Measures: Historical US 3 Month Treasury Bill rates are used as the risk free rates when calculating Alpha, the Sharpe ratio, the Sortino ratio, and the downside deviation.

Disclosure

This portfolio report was generated using Interactive Brokers' PortfolioAnalyst tool, which allows Interactive Brokers clients to generate analyses of their accounts using market data provided by third parties along with trade and account data contained in Interactive Brokers' systems. This report is for information purposes only and is provided AS IS. Interactive Brokers makes no warranty of any kind, express or implied, as to this report and its contents. The data provided for use in the PortfolioAnalyst tool is believed to be accurate, but completeness and accuracy of the information is not guaranteed, and Interactive Brokers has no liability with respect thereto. The data regarding accounts held outside of Interactive Brokers is obtained either directly from your input or from the financial institutions holding those accounts through a third-party service provider and Interactive Brokers has NOT reviewed its accuracy.

The material in this report is intended only as a reference and should not be relied upon for the maintenance of your books and records for tax, accounting, financial, or regulatory reporting or for any other purposes. This report is not an offer or a solicitation of an offer to buy or sell any security. This material does not, and is not intended to, take into account the particular financial conditions, investment objectives, or requirements of individual customers. Before acting on any material within this report, you should consider whether it is suitable for your particular circumstances and as necessary, seek professional advice.