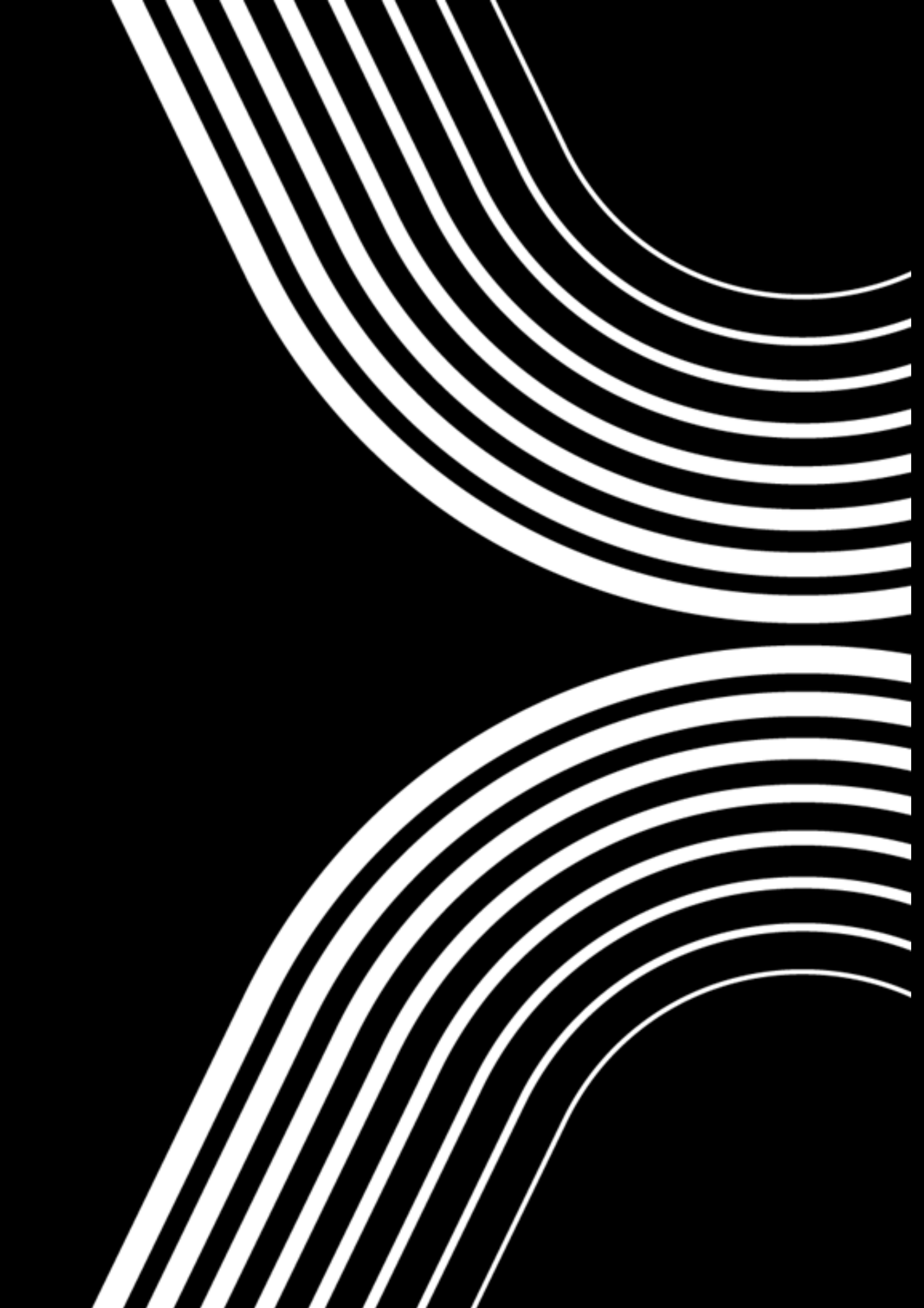


axion

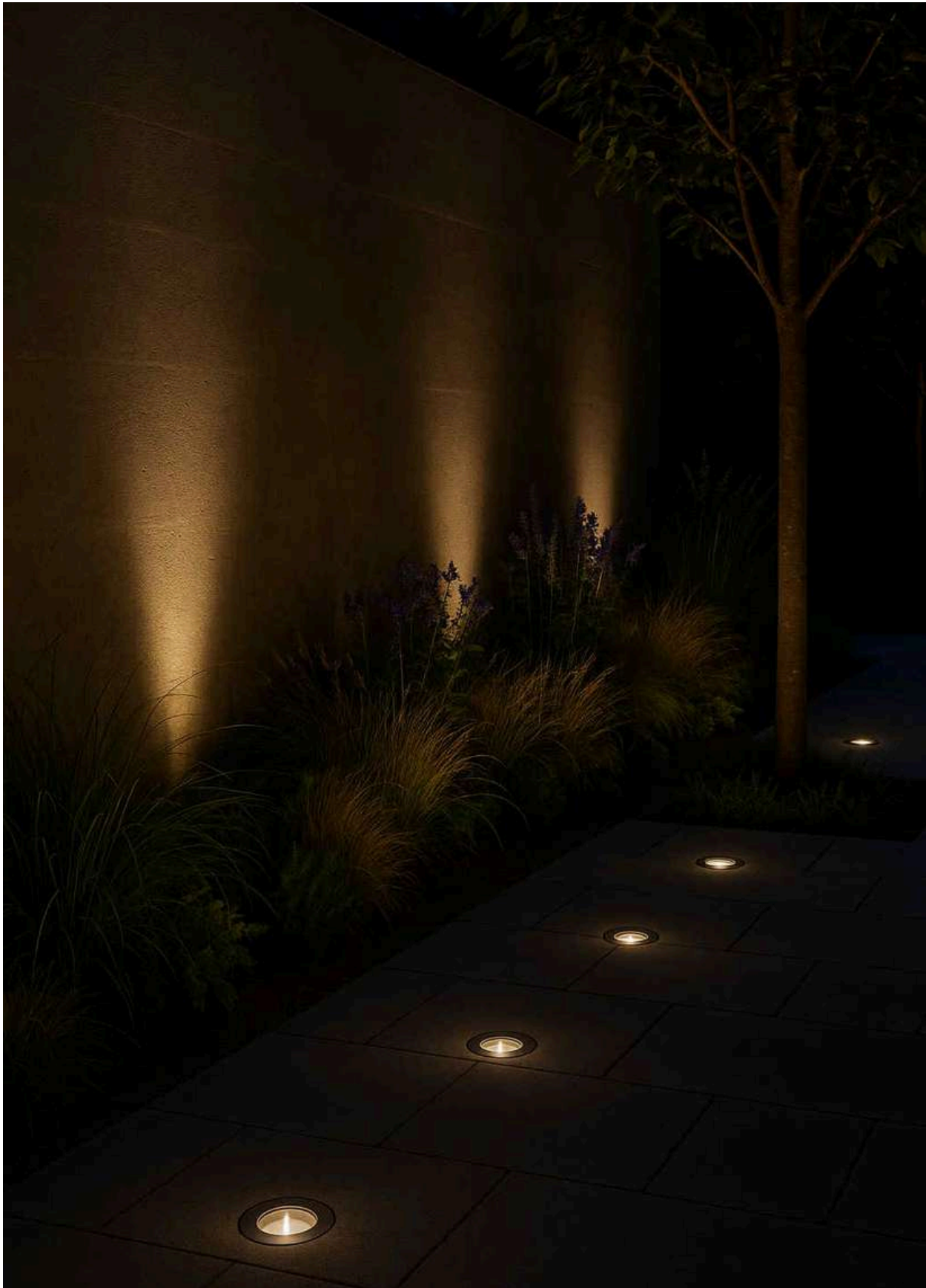


INGROUND |



FORLI

Aluminum body.
AISI 316L stainless steel flange.



FORLI round or square:

Free to choose.



Compact Size

Compact downlight (46–66 mm) with slim flange and built-in optics for sleek, easy installation.

Wide Selection

FORLI offers Spot, Flood, Medium Flood, Wide Flood, and Elliptic Spot optics in two shapes and three sizes, with constant current or voltage. _J tilting models adjust easily with a screw—no fixture opening needed.

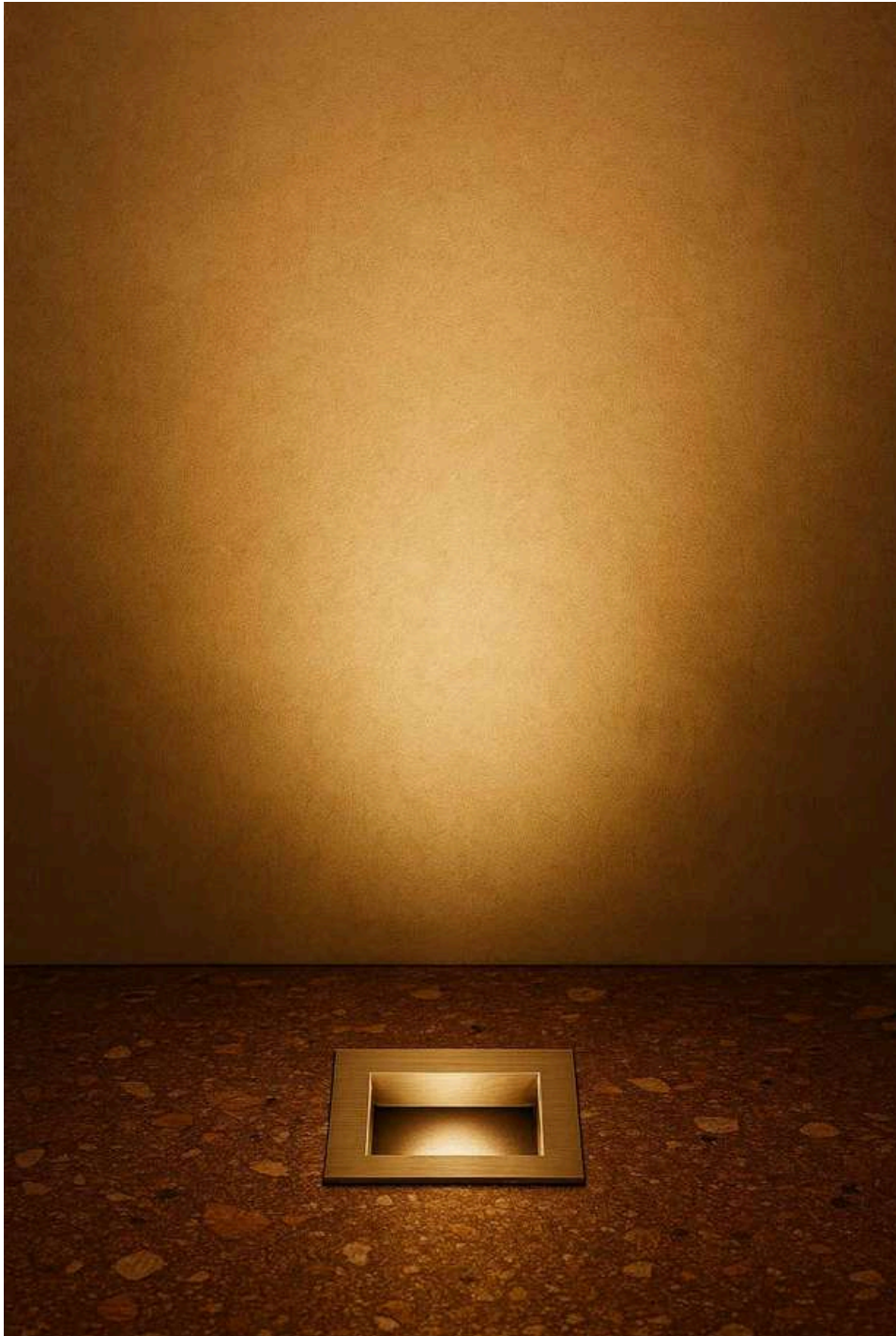
Discover FORLI Upplight

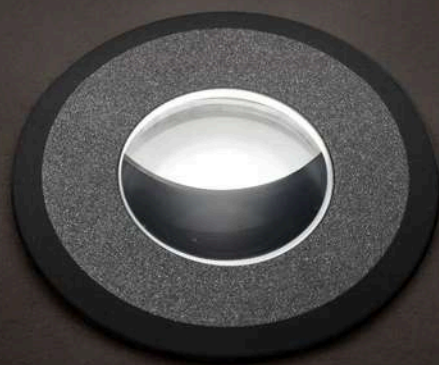
The FORLI range now features a slim 51mm body that connects directly to mains, removing the need for external ballasts for quicker, simpler installation—while maintaining performance and durability.



Square-Form Design

Introducing FORLI_Q: a compact, square-shaped recessed fitting ideal for tight spaces. Features anodized black die-cast aluminum, AISI 316 stainless steel flange, toughened glass, and high protection ratings IK10 and temporary IP68.





NAPO

Brass or aluminum body.
Brass or steel flange.

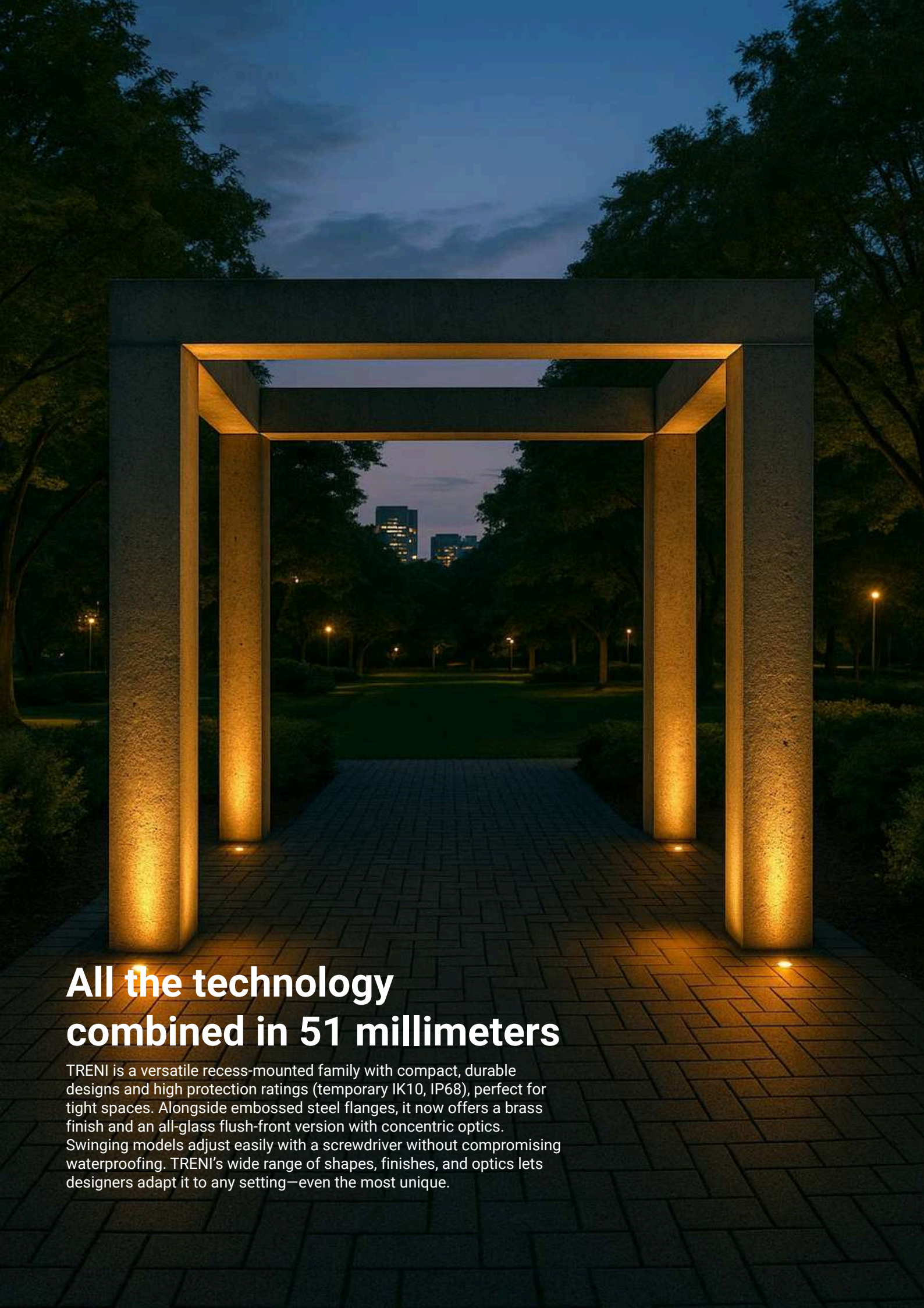




TRENI

Brass or aluminum body.
Brass or steel flange.



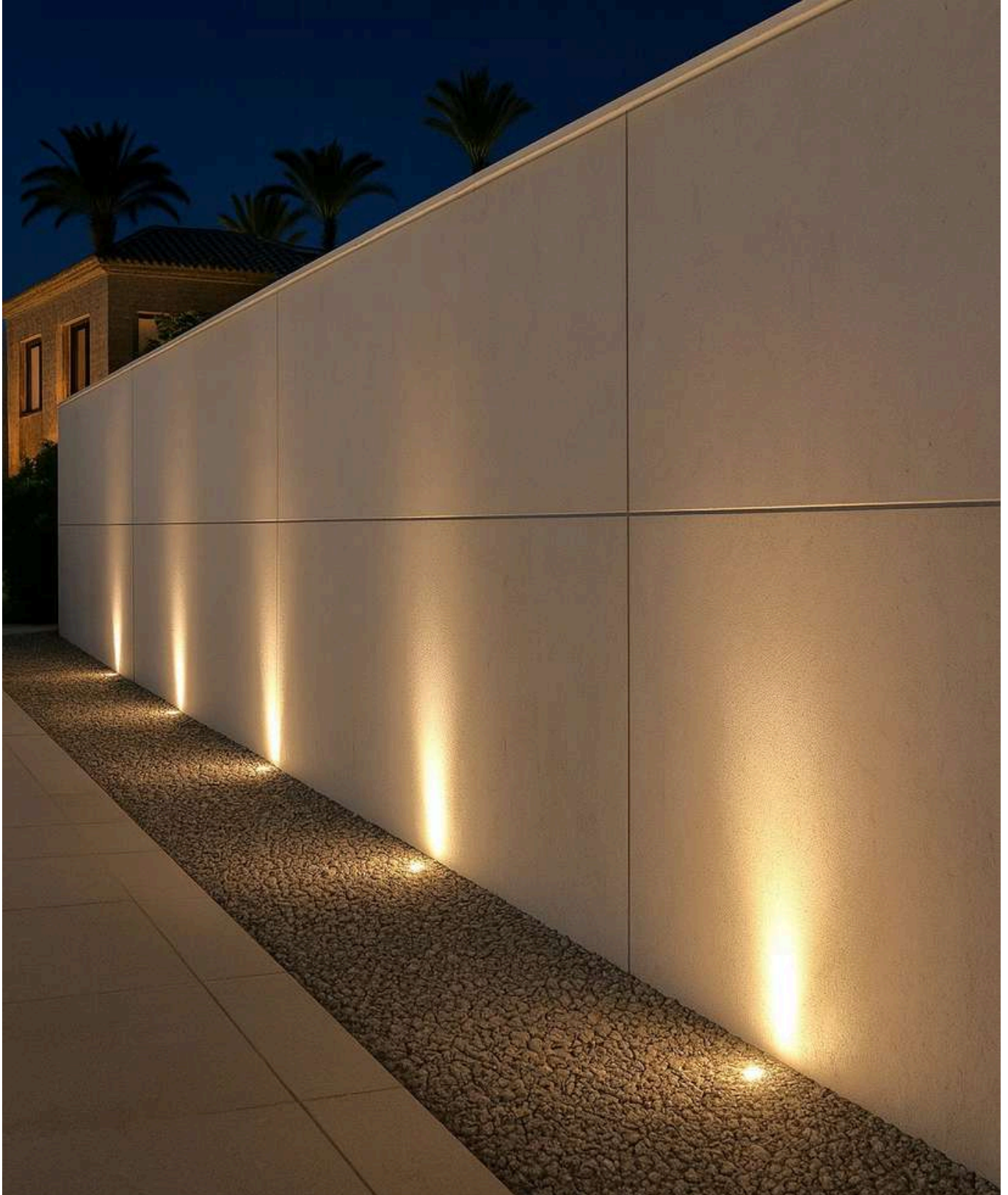
A photograph of a modern architectural structure at night. It consists of four thick, square columns and a rectangular frame on top. The columns and the frame are illuminated from within, casting a warm, golden glow. The structure is situated on a paved path in a park, with trees and a city skyline visible in the background under a dark sky.

All the technology combined in 51 millimeters

TRENI is a versatile recess-mounted family with compact, durable designs and high protection ratings (temporary IK10, IP68), perfect for tight spaces. Alongside embossed steel flanges, it now offers a brass finish and an all-glass flush-front version with concentric optics. Swinging models adjust easily with a screwdriver without compromising waterproofing. TRENI's wide range of shapes, finishes, and optics lets designers adapt it to any setting—even the most unique.

Illumination that shapes design

At night, artificial lighting shapes shadows and chiaroscuro to add depth and highlight statuesque forms. Enhancing statues and monuments requires understanding their materials, interaction with ambient light, and desired visual impact.





ROMA

Aluminum body, brass body.
AISI 316L stainless steel flange





Dark light

To focus light only on desired surfaces and reduce unwanted emission, use the darklight filter—a beam-sectioning accessory that directs light to the wall while preventing glare.





ROMA316

AISI 316L stainless steel body.
AISI 316L stainless steel flange.

