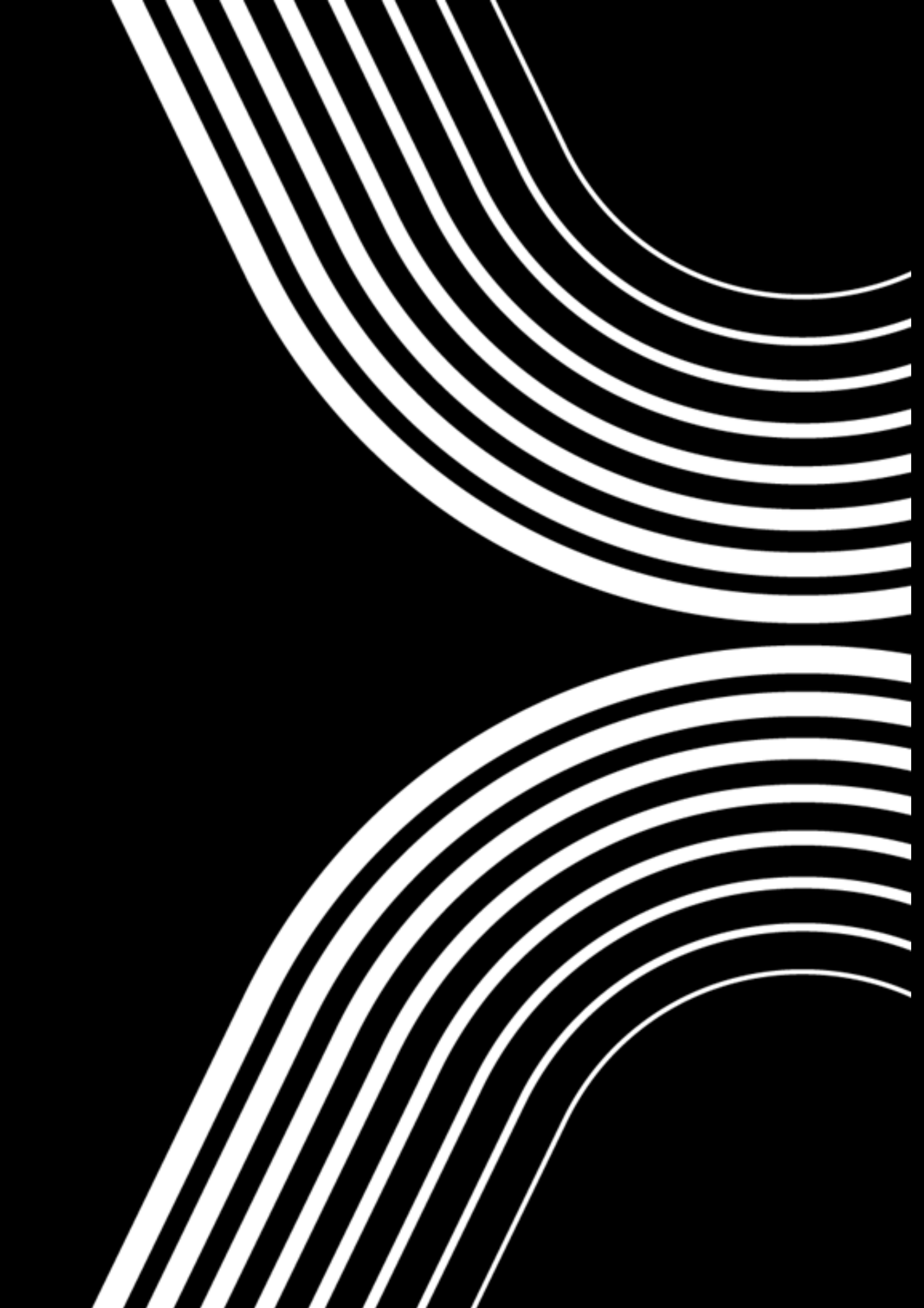


axion

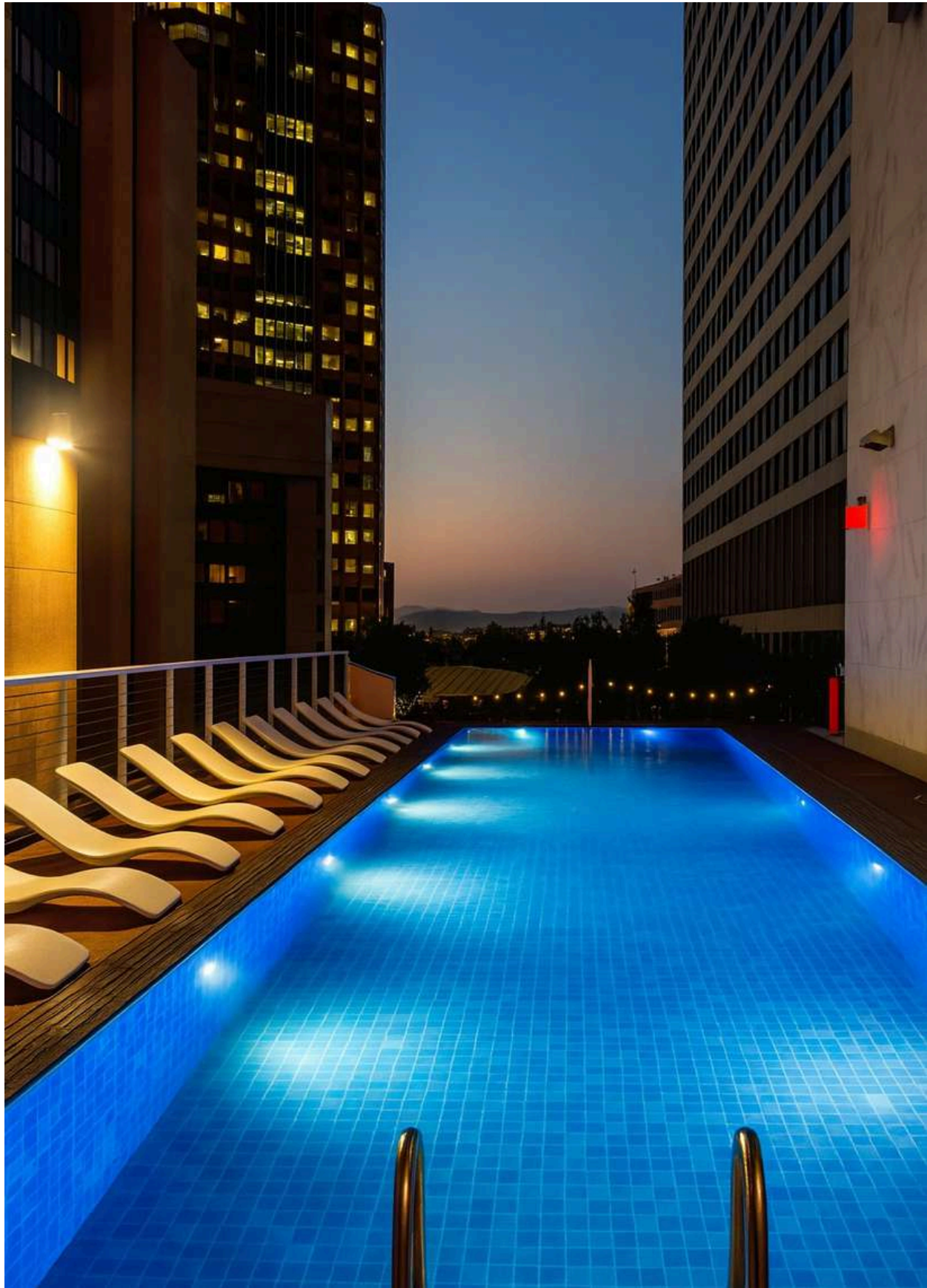


UNDER WATER |



NEMO

AISI 316L stainless steel body.





ARIEL

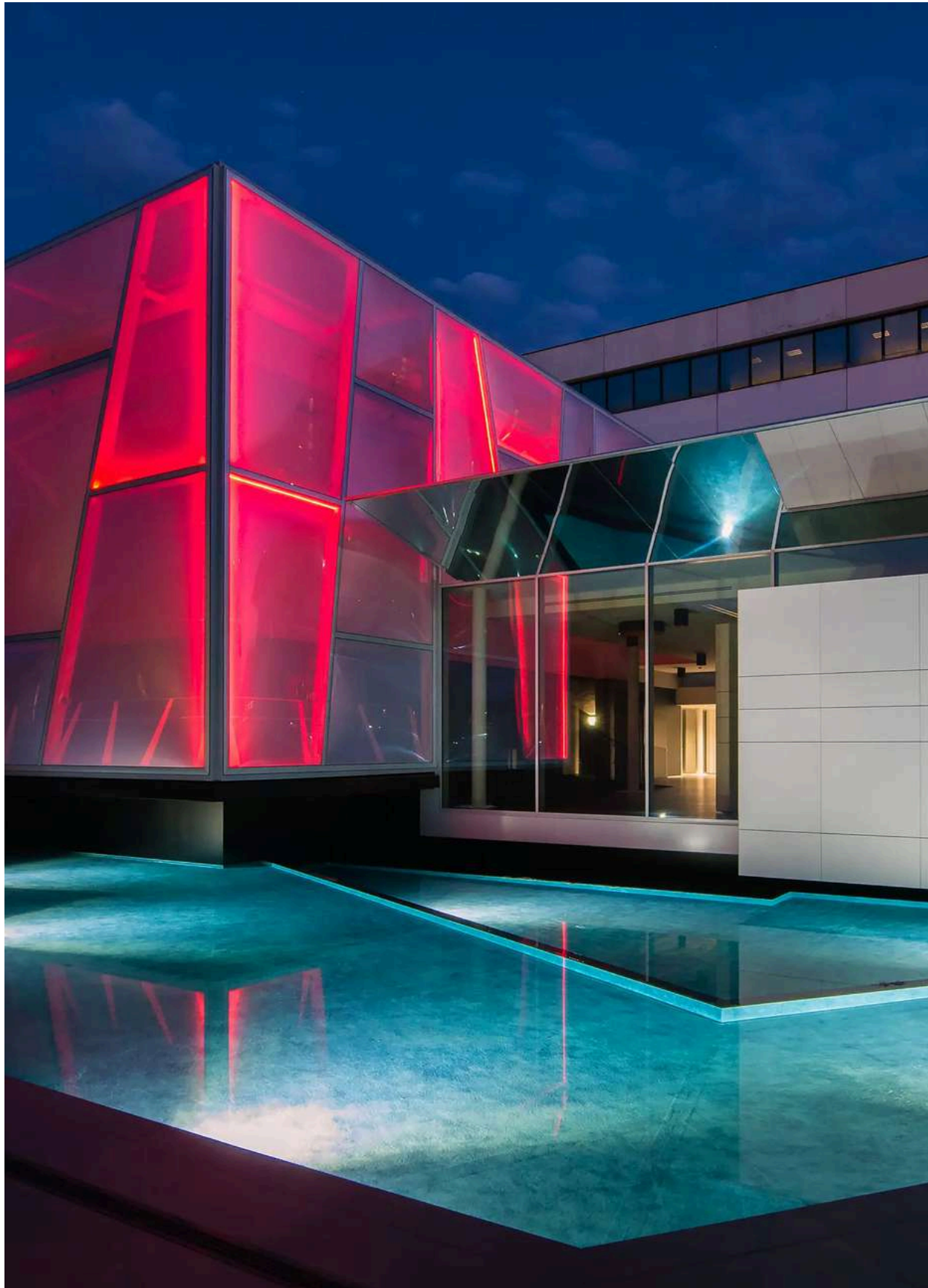
AISI 316L stainless steel body.





NAVO

AISI 316L stainless steel body.



NAVO reaches depths up to 25 meters.

NAVO is an innovative IP68 submersible recess mount, perfect for underwater scenes. Its waterproof casing enables wall or floor installation, and its AISI 316L stainless steel structure withstands depths up to 25 meters.

Flange made of electro-polished
AISI 316L stainless steel*

Electro-polishing is an electrochemical process that smooths the surface by removing the outer layer, reducing roughness and micro imperfections. It enhances corrosion resistance, improves appearance, and eases cleaning and maintenance.

AISI 316L stainless steel body

Clear tempered glass



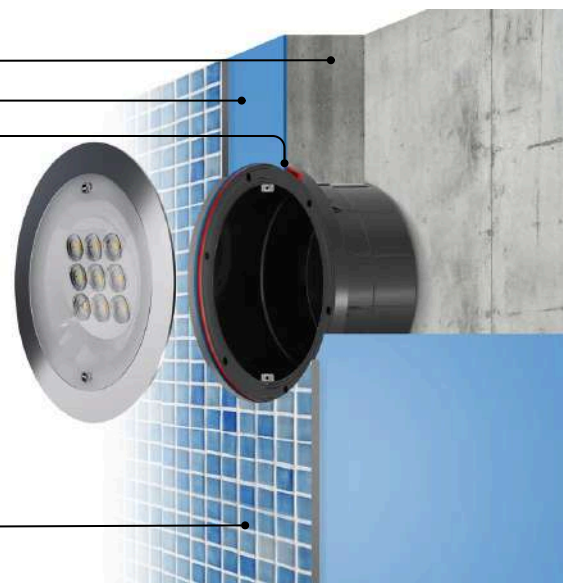
Mounting options

Suitable for installation in concrete casting with tile or mosaic surfaces.

NAVO RF only with outer casing 83140, 83141, 83142

Concrete
Waterproofing layer
Hydro-expansive sealant142

Tile or mosaic

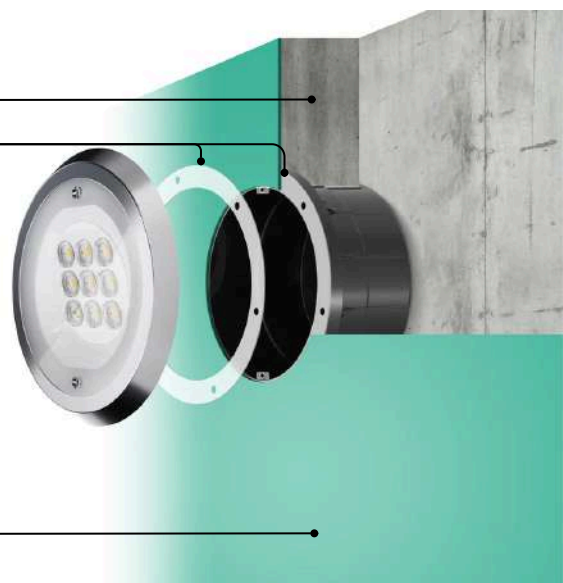


Suitable for installation on concrete casting with sheet covering.

NAVO R with outer casing 83197, 83198

Concrete
Waterproofing

Sheet covering

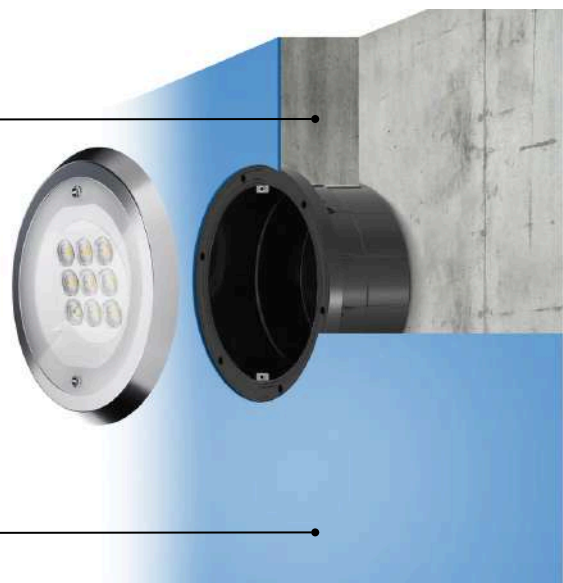


Suitable for installation on concrete casting with waterproof covering.

NAVO R with outer casing 83141, 83142

Concrete

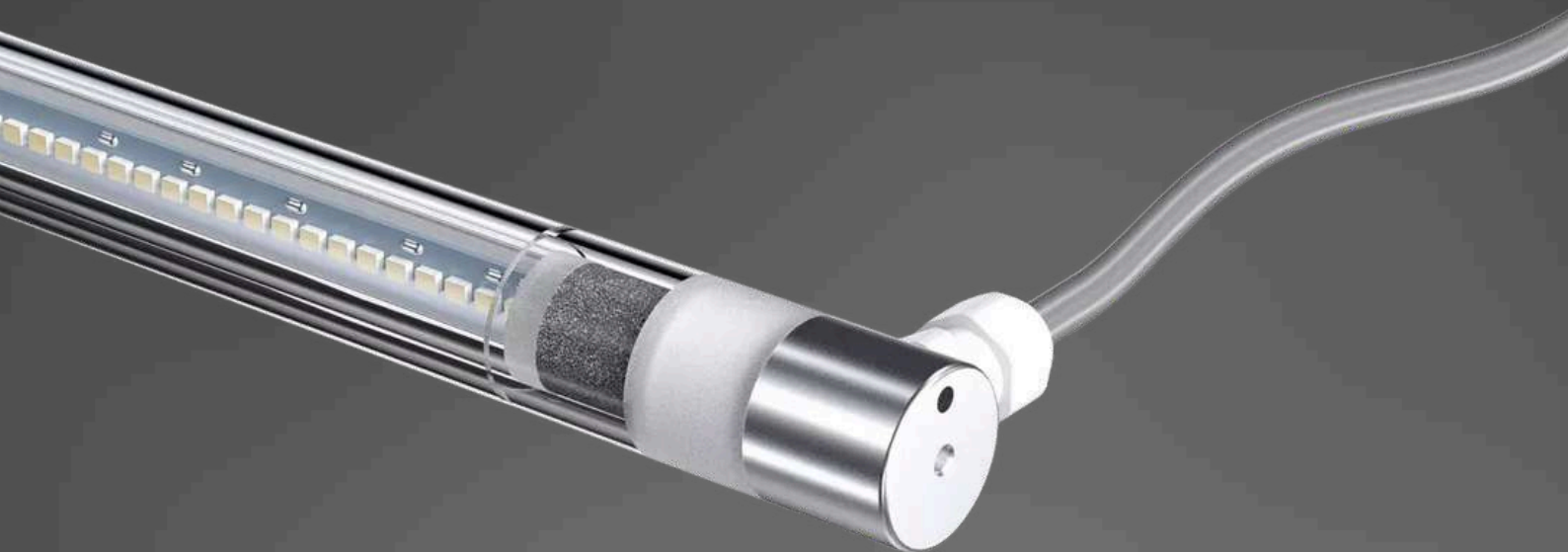
Cementitious elastic insulation



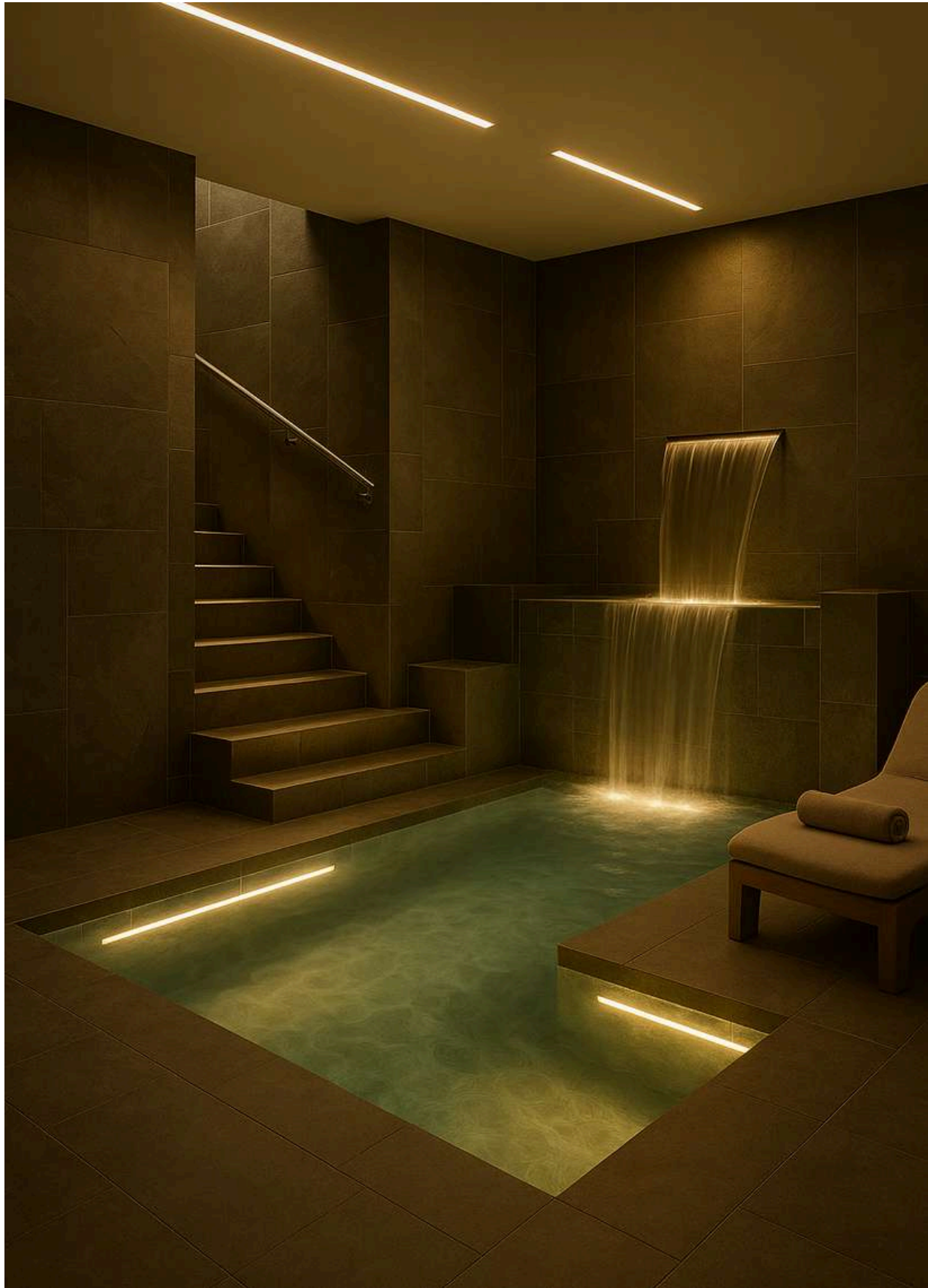


GOMA 3D PROTECTION





ONDRA68



ONDRA68 integrates smoothly with the new outer casing.

The AISI 316L stainless steel outer casing offers an extra recessed installation option for ONDRA68. This gives designers more ways to create unique underwater lighting in pools and fountains. The integrated bracket enables easy installation and removal for maintenance. The casing fits ONDRA68_R and ONDRA68_Q models in 694 mm and 1290 mm lengths.



ONDRA68 steps into the future

ONDRA68 is an adjustable, IP68-rated underwater luminaire designed for pools, baths, and fountains. Its ZeroAir system prevents internal humidity. Available in two sizes (round or square), two power levels, and a new Flood optic. Made of polycarbonate with AISI 316L stainless steel closures, it withstands depths up to 25 meters.





VELVIX

AISI 316L stainless steel body

