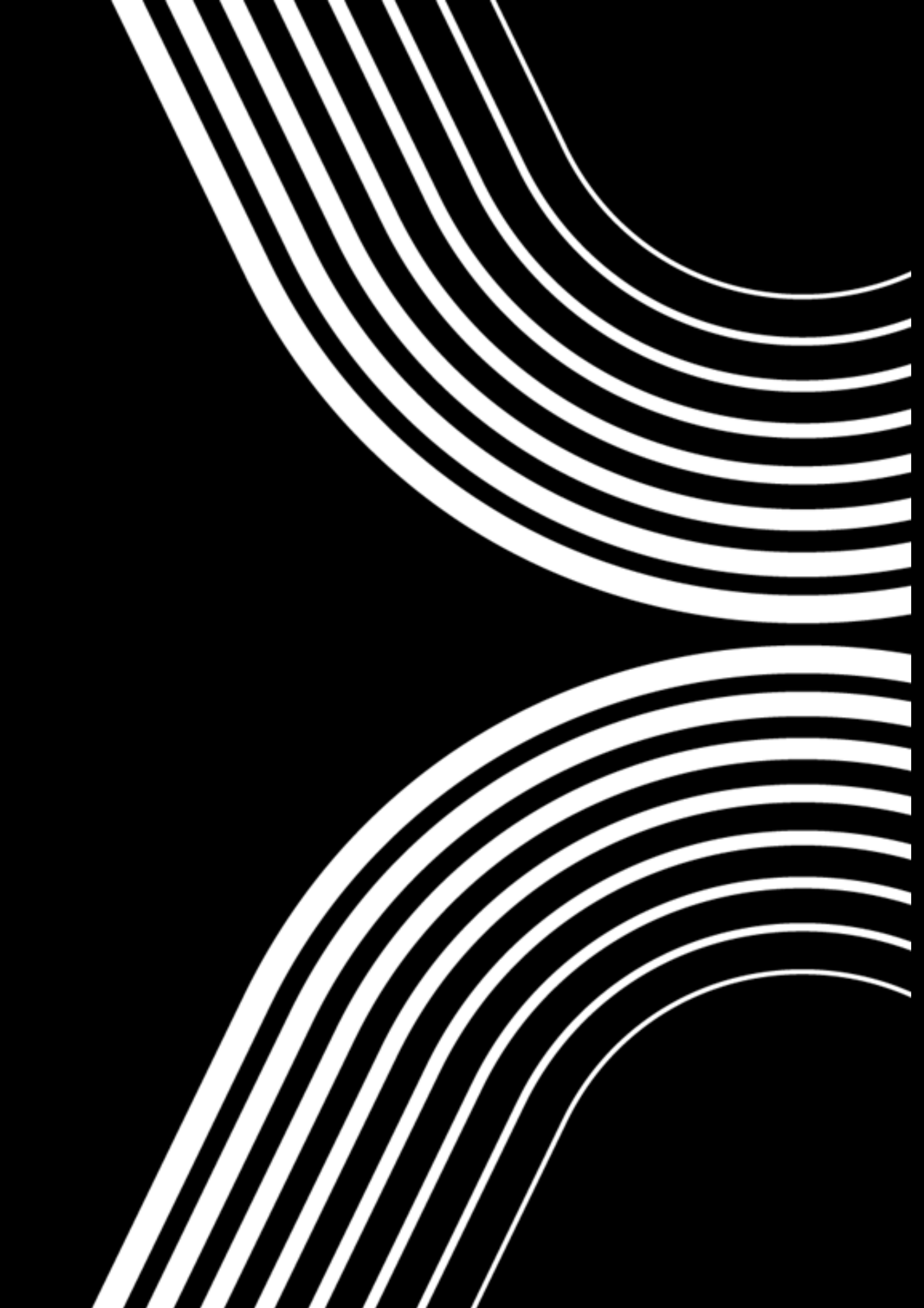


axion



PROJECTORS & TRACK SYSTEMS

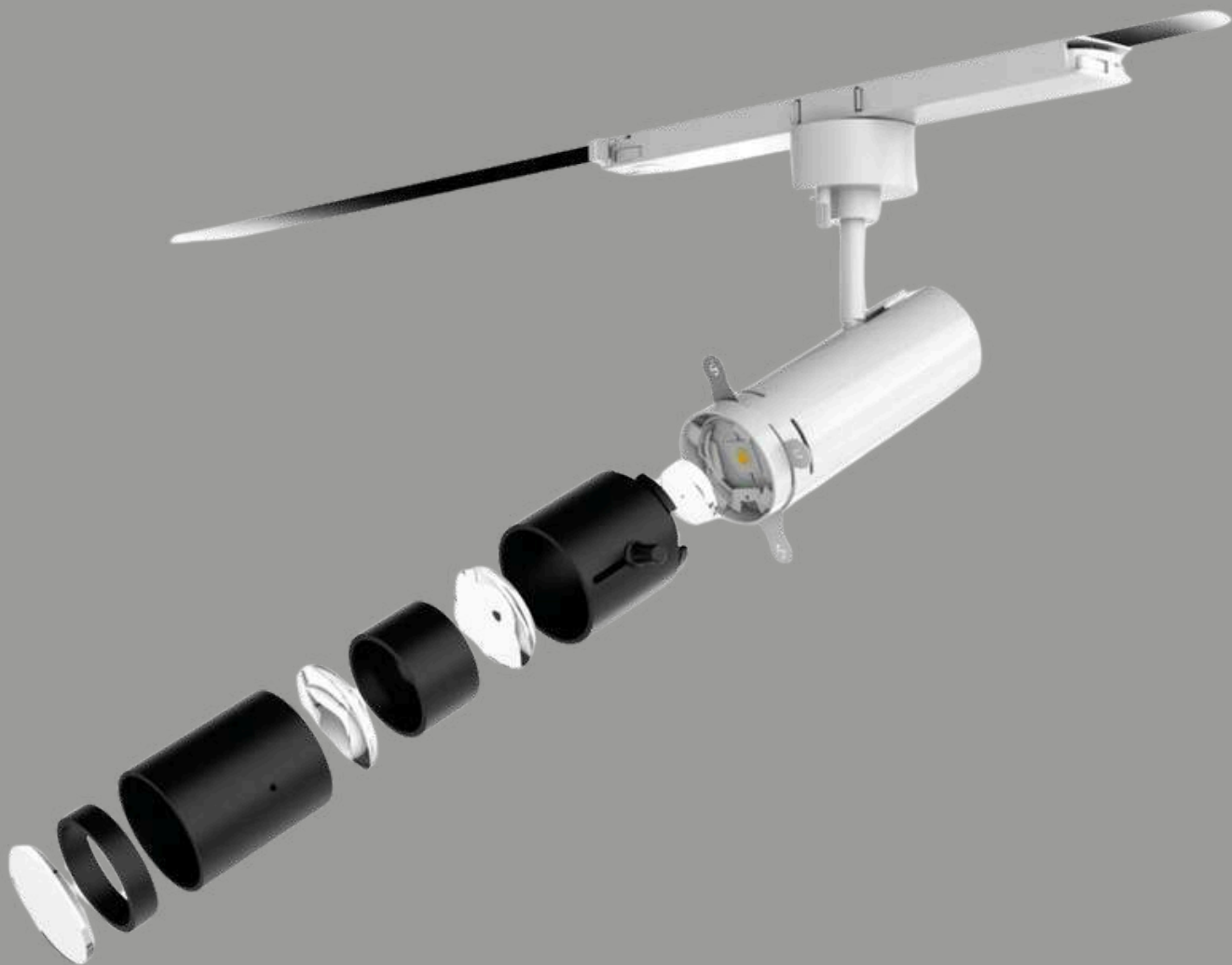




GIO_P

Aluminum body.





GIO_P with Focus Optics

A precision lighting tool with adjustable Focus optics—ideal for highlighting architecture, art, or displays. Its advanced profiling system minimizes spill and ensures sharp, clear illumination.

Super spot



Expert Series

GLO_P projectors suit museum settings, providing focused, shaped lighting to enhance displays.



Wall lamps, Ceiling lamps, Projectors

A wide range

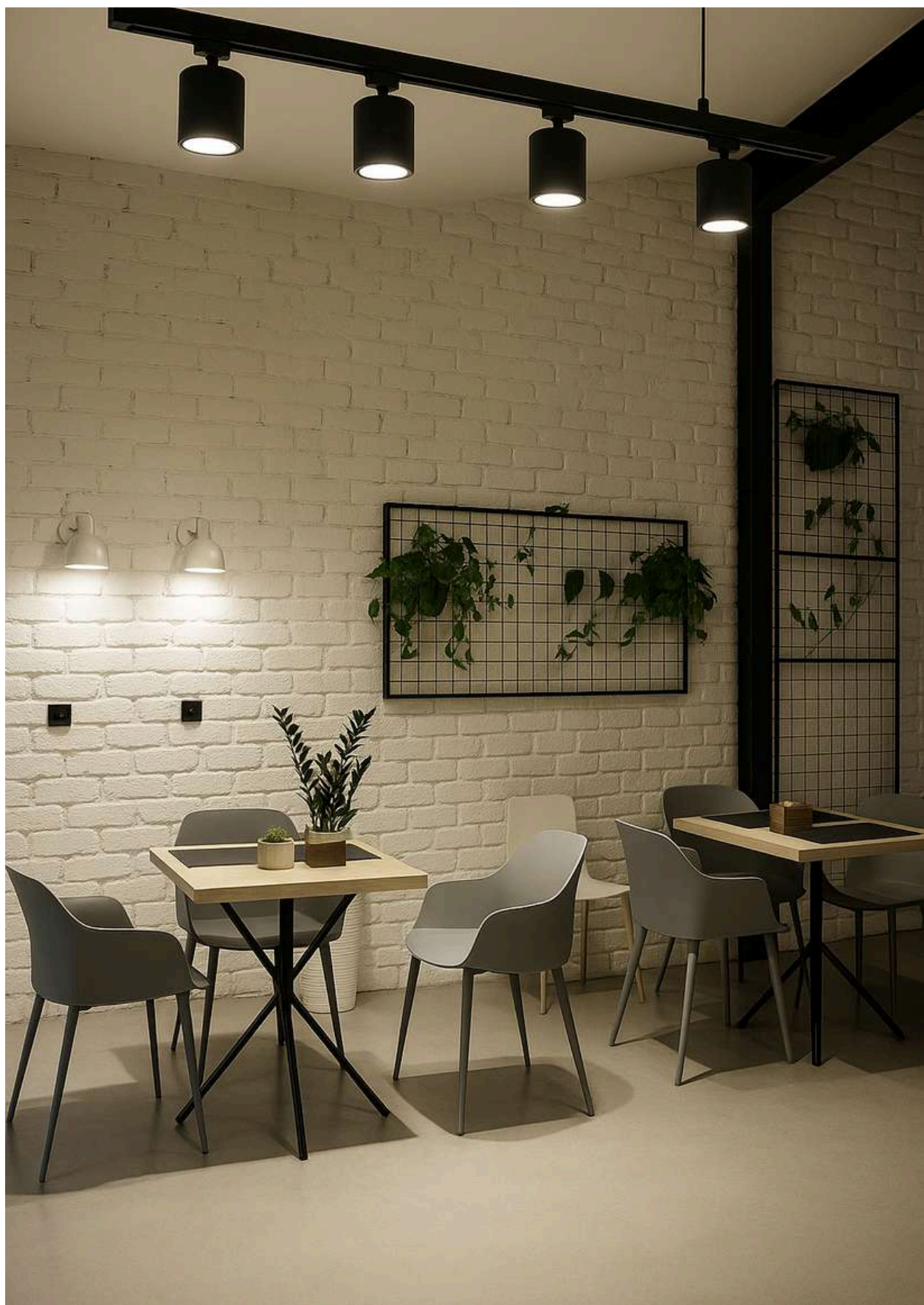
Perfect to meet the countless requirements in any area from retail to museums.





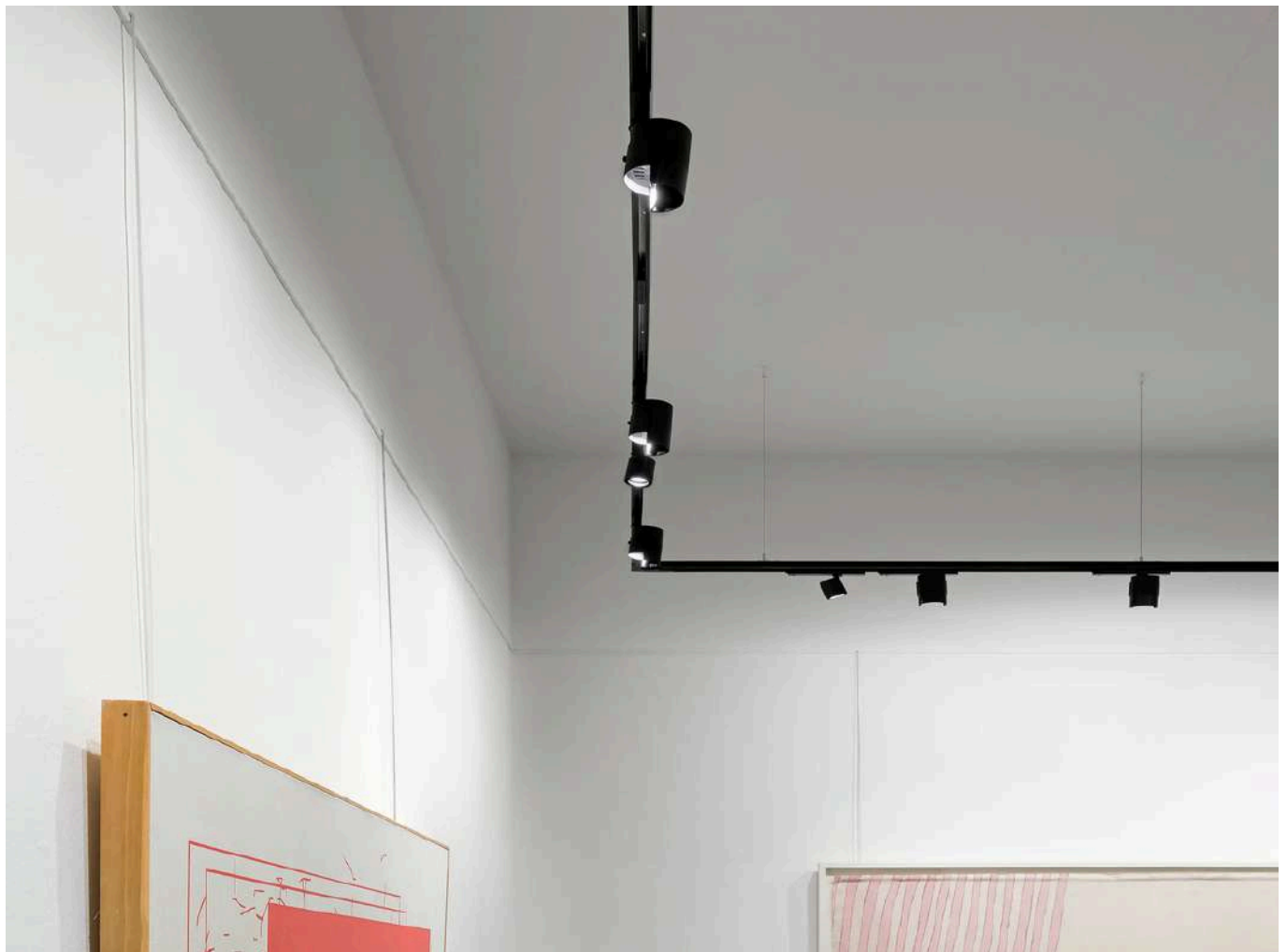
NIRO

Aluminum body.



Flexible Range

NIRO comes in recessed (EX), wall-mounted (W), and track-mounted (T) versions, offering versatile use with a consistent, cohesive design.



NIRO now uses high-efficiency LEDs for powerful, flexible lighting. Swappable optics and accessories offer precise control, while its compact design fits retail, museum, and more.



Optics: Spot



Optics: Flood/M.Flood



Optics: W.Flood

Interchangeable accessories and optics



Focal Kit
(min 16° / max 42°)



Honeycomb



Cross louvre



Elliptical filter



45° Cylindrical
screen



Cylindrical screen



Locking ring



NIRO

Features advanced light control using built-in Sliding Kickers and Sliding Hood systems.



Sliding Hood

Sliding Flap



VICO_R TRACK

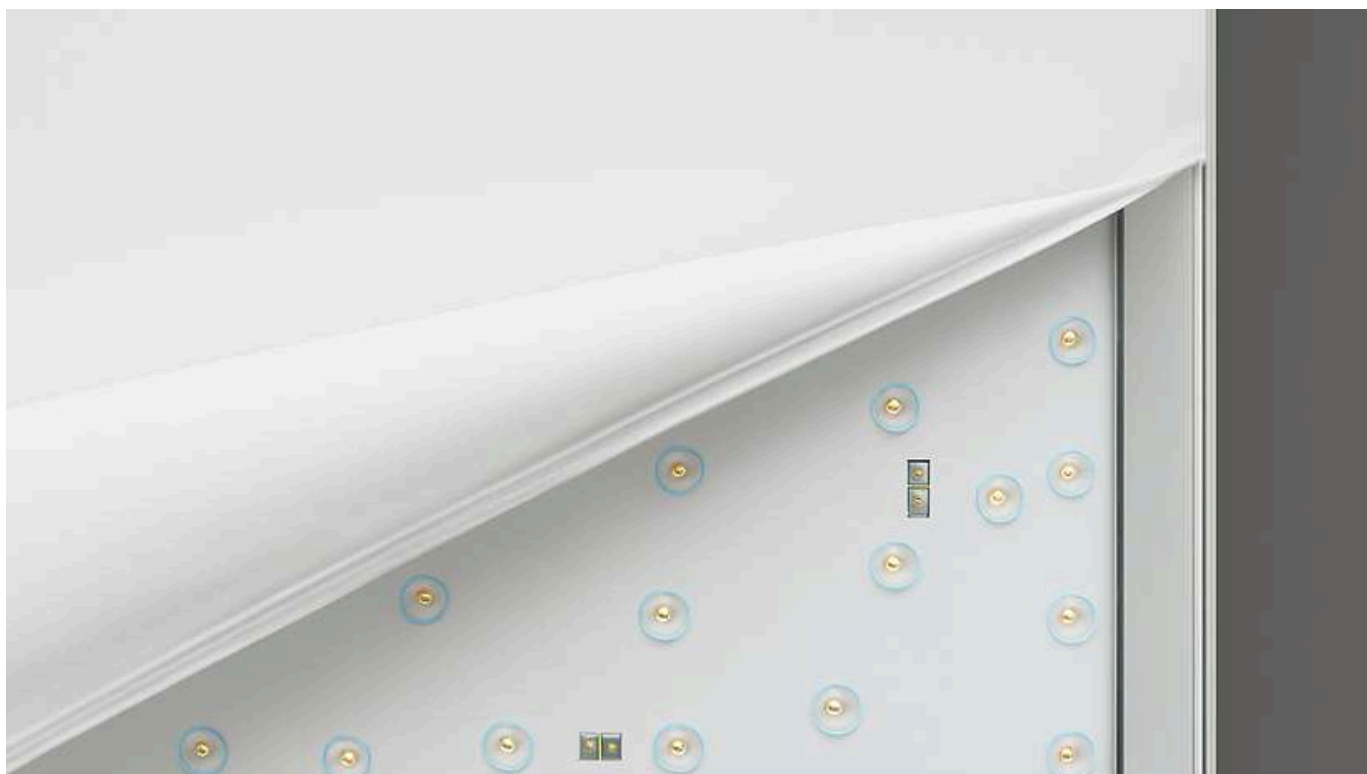
Body in aluminum. Diffuser in micro
prismatic PMMA (Comfort)



Track is a slim fixture for electrified tracks, delivering even, diffused light.
VICO_R Track suits workspaces, offices, and retail with high visual comfort.

**Micro-prismatic
diffuser Comfort**





Superior light distribution

VICO is a high-definition lighting system offering seamless, shadow-free illumination. It features a removable, flame-resistant B1-rated polyester diffuser (DIN 4102-1) for vertical light projection.



MODI-P TRACK

Aluminium body





TAV035_T

TRACK

Aluminum profile. Polycarbonate diffuser.

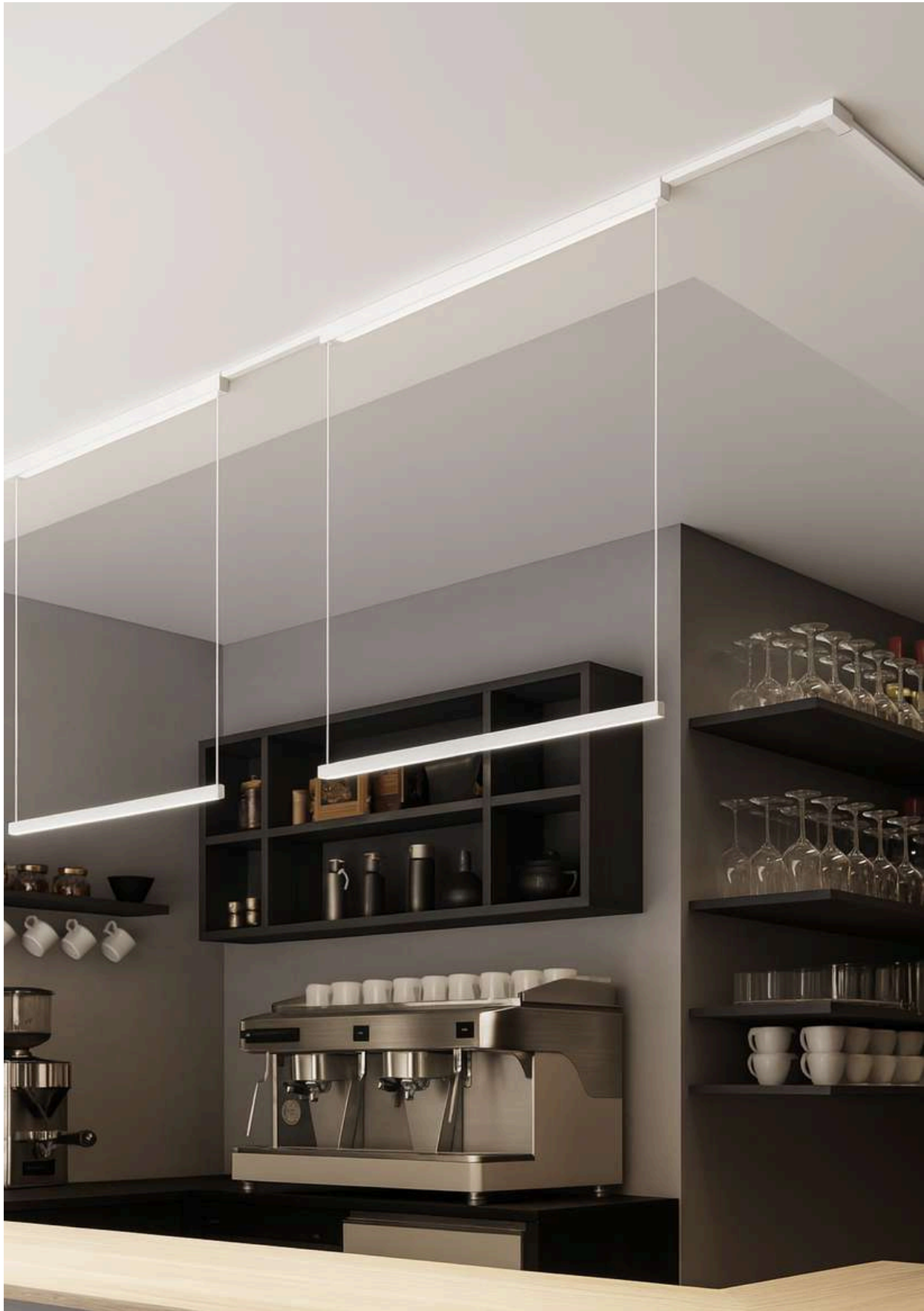


A complete system for architecture



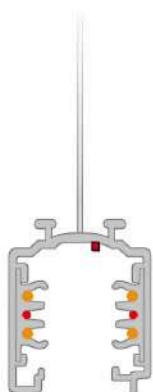
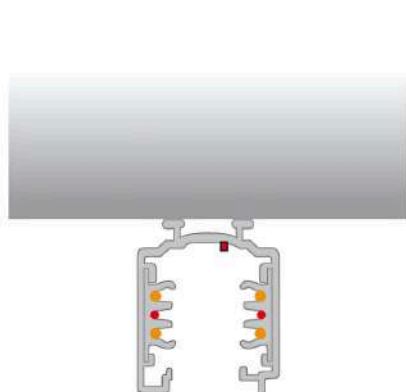
TRACK SYSTEM

Aluminum body.



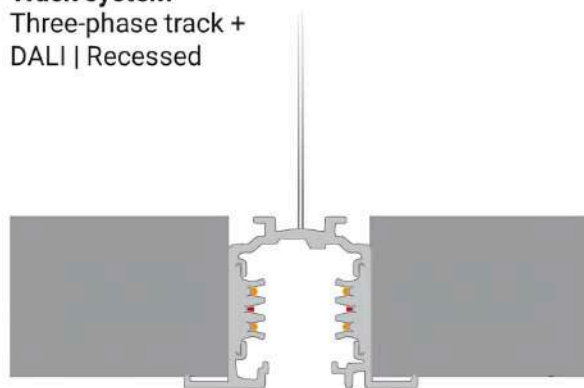
Track system

Three-phase track +
DALI | Ceiling/Suspension

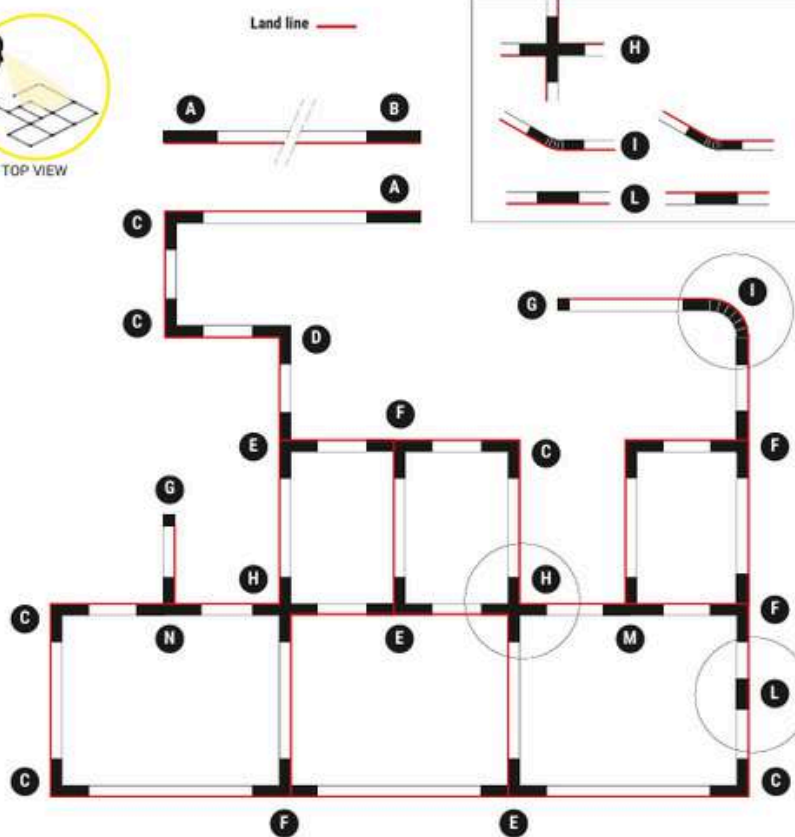
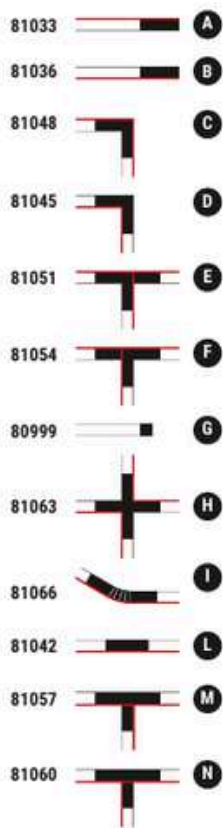


Track system

Three-phase track +
DALI | Recessed



PLAN VIEW FROM ABOVE





Rubber 3D connection

Projector

Track System power supply
for Rubber 3D

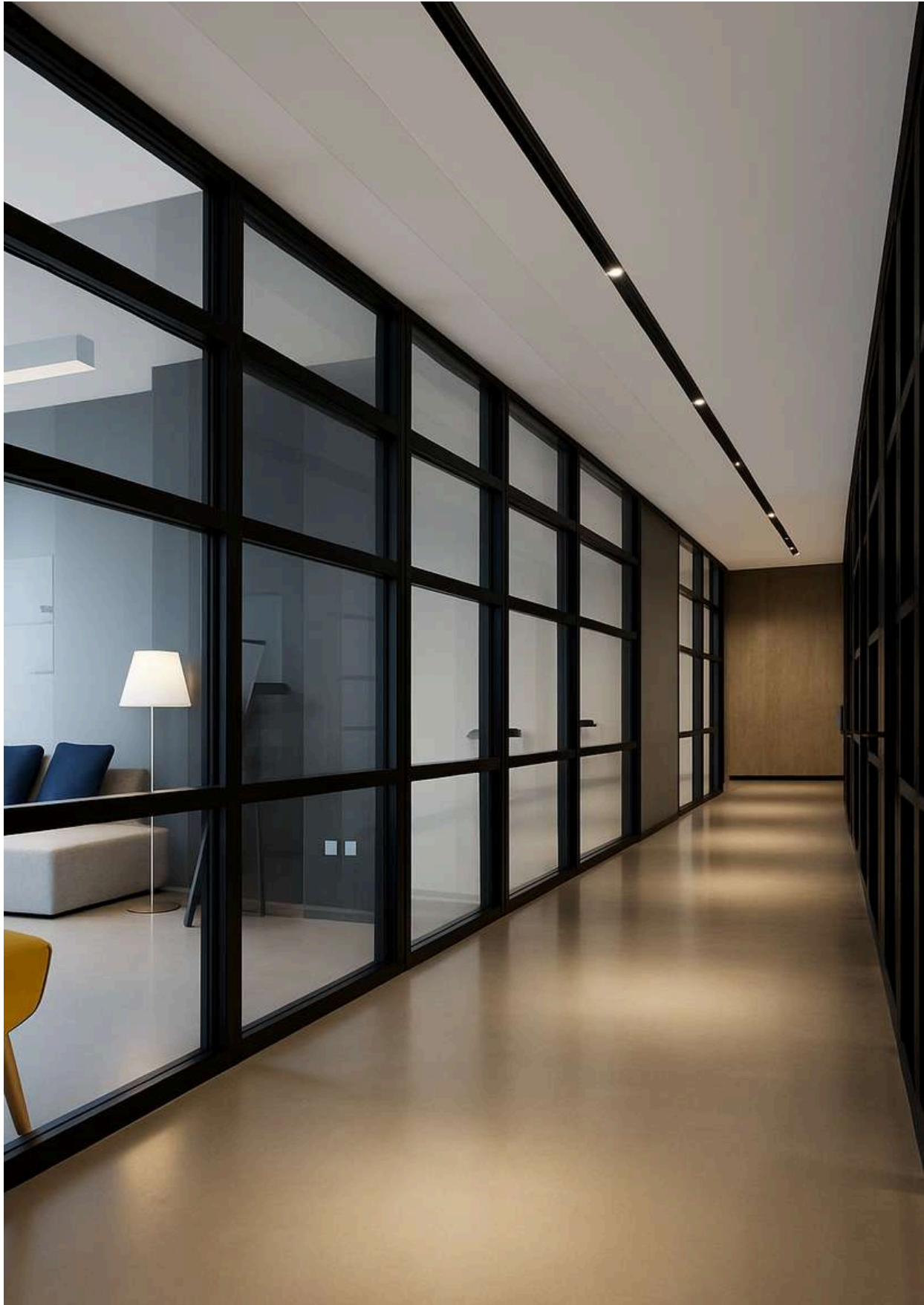
RUBBER 3D

NOW COMPATIBLE WITH TRACK SYSTEM

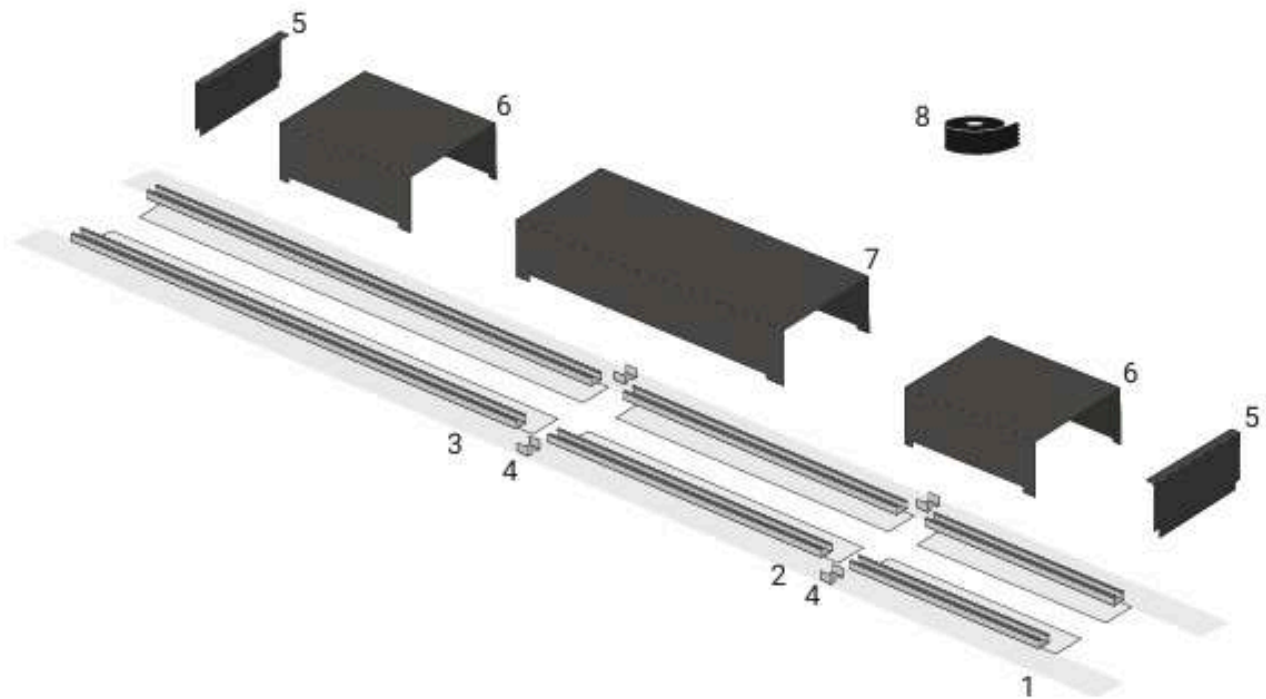


RISO

Structure in EPS Aluminum projector



Smart Integrated Design Solutions



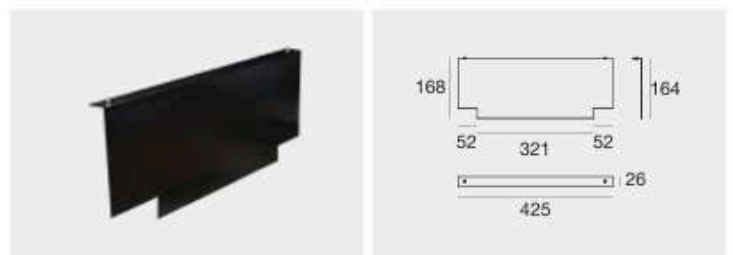
Top protective cover

Upper cover guard



Sealing component

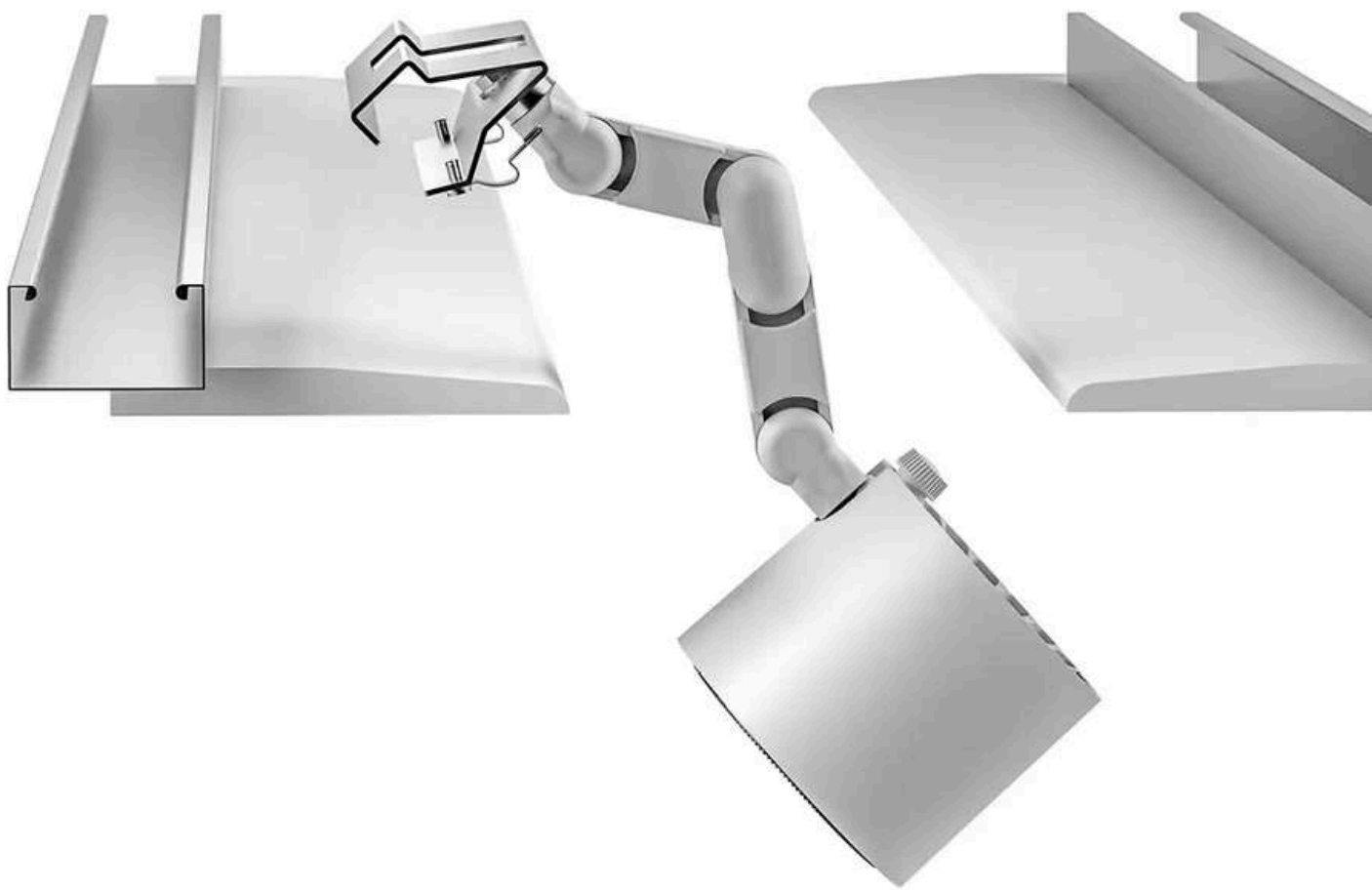
Sealing head



Linear frameworks

Linear Profiles _P (pair)





INTEGRATED DESIGN ARCHITECTURE

STEP 1

After preparing the ceiling structure, position the luminaire within the linear housing.

STEP 2

Secure the luminaire by inserting the end of its base into the internal profile housing.

STEP 3

Complete the installation by pressing down on the base near the articulated arm connection point.