



AI Robotics Infrastructure for Autonomous Meal Supply

Feeding Humanity autonomously. Scaling industrially.

Circus is a Global IP Leader in Military and Civilian AI Robotic Systems

Inventor of AI robotics nutrition systems – building embodied robotic systems to bring AI into physical world services. High volume production active.

36

Patents in AI robotics

6k

Unit production capacity p.a.

+1M

Robot-made meals served

CA1

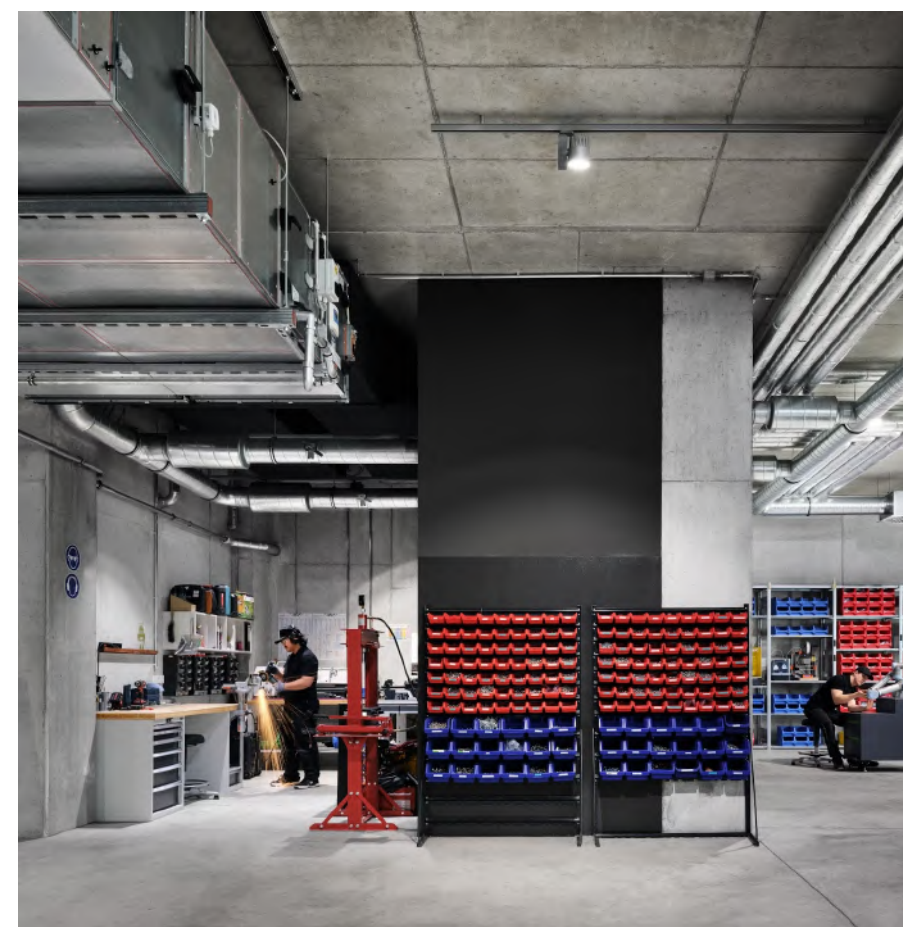
Public since early '24 (XETRA)

~85

AI robotics experts team

2021

Founded; German based HQ/ R&D



AI Robotics Infrastructure System for Autonomous Meal Supply in Urban Areas – Serial Production live

CA-1

Developed to advance high-quality meal accessibility and remove labor dependency while reducing footprint and waste.

Meals produced per day ~800

Daily human interaction <1h

Required ground space 7qm



REWE RETAIL

Launch Event – Nov. 25

fresh & smart

REWE

Abholung
Bitte wählen Sie Deine Bestellung aus
Fertig

META (GERMAN HQ)

Launch Event – Oct. 25

TMRW ■ HERE

CIRCUS GROUP | Meta



Enterprise Growth with Overwhelming Demand – over 500 Contracted Orders and +8,000 AI Robotic Systems under MoU

RETAIL



Offering robot-made meals at price point -60% compared to market.

16,000 locations total

CARE



Meal supply for employees and visitors; servicing 1,600 hospitals.

1,600 hospitals total

EDUCATION



Full office integration to cater employees; replacing canteen.

Over 73,000 employees total

INDUSTRY



Autonomous meal service for factory workers 24/7 at high quality

175,000 employees total

Lighthouse customers fueling commercial growth – client selection:



Secura



Deutsche Tamoil



Alpha Dhabi Holding



BER Airport



Mangal by Lukas Podolski

+40



THE STATUS QUO

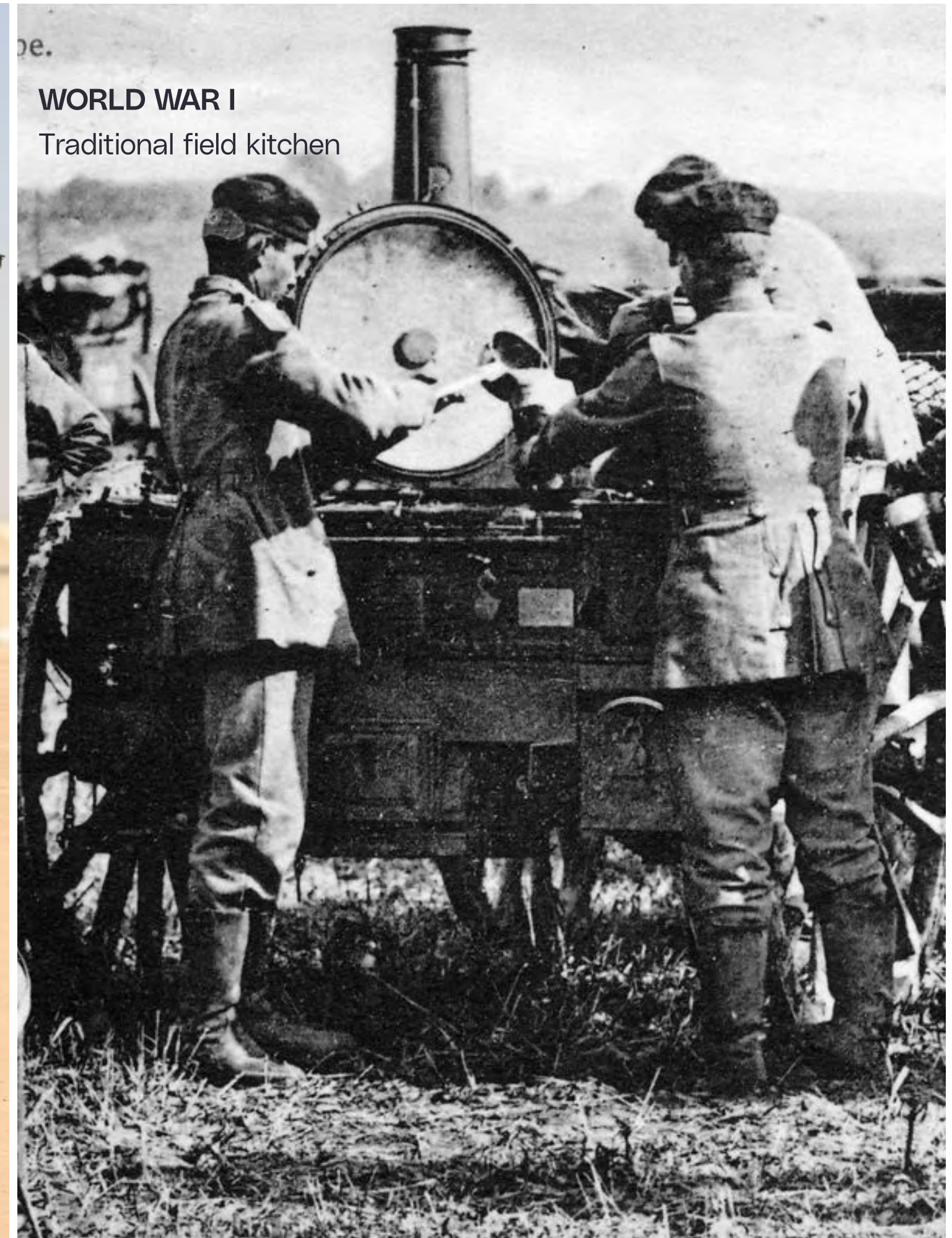
Traditional field kitchen



de.

WORLD WAR I

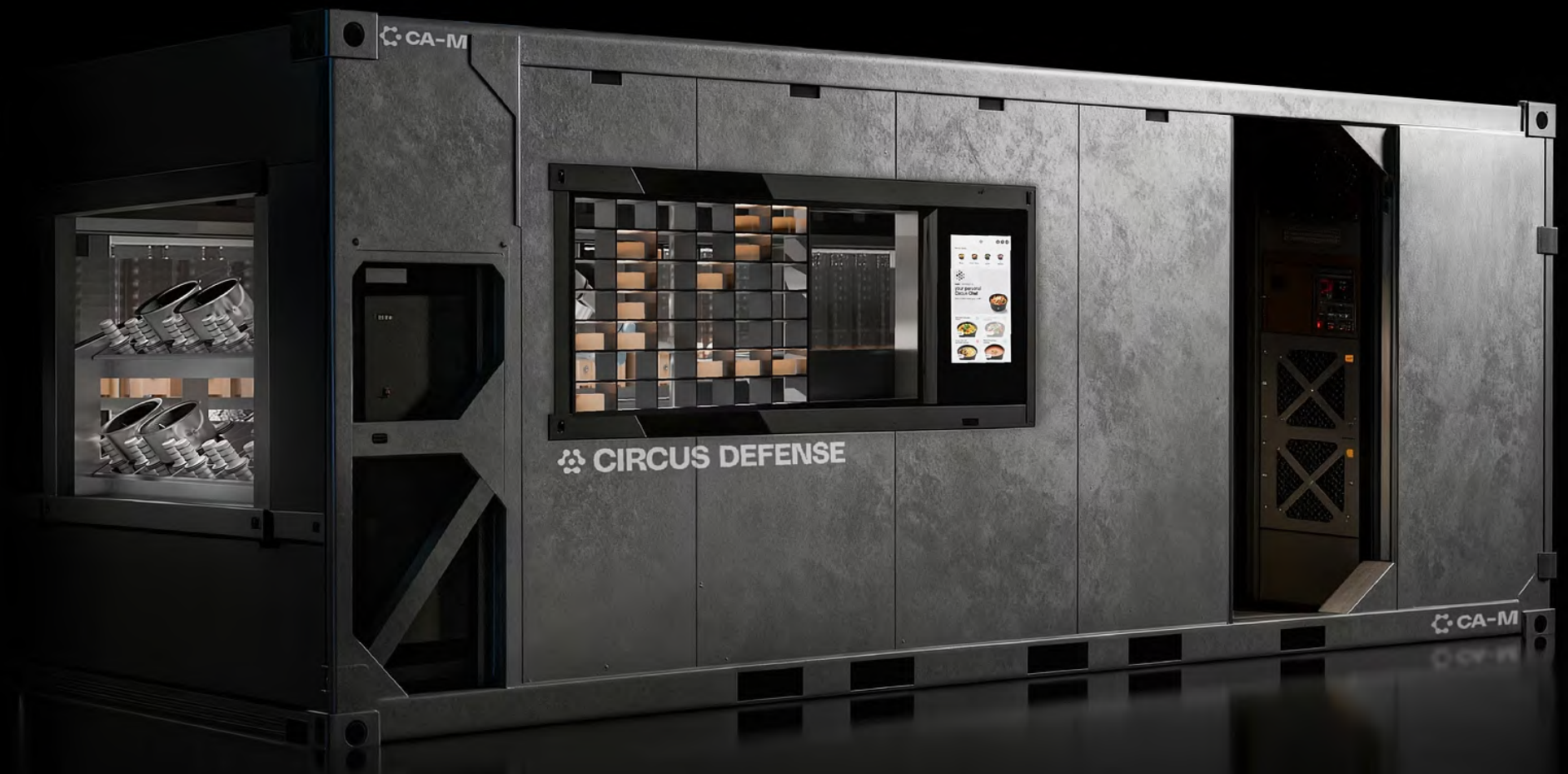
Traditional field kitchen



Unmanned AI-robotics System for Autonomous Troop Supply – Feeding Ground Forces

CA-M

Build at the fraction of cost compared to manual field kitchens at near-zero human risk exposure due to robotics and AI control.



	CA-M	FIELD KITCHEN
Meals produced per day	~2k	~1k
On ground set up time	30min	>5h
Military personnel required (FTE)	0.5	8-10

Certified supplier by:



CA-M System Engineered for Full Autonomy in High-Risk and Off-Grid Environments with Minimal Personnel and Infrastructure

CA-M (Series 1) Features:



NUTRITION AMMUNITION

Standardized ingredient silos enable rapid resupply, hygienic handling, and modular exchange.



AIR DROPPABLE

Containerized design and reduced weight profile allow rapid air deployment and setup.



DRONE PORT

Integrated docking and data interfaces enable autonomous coordination with UAV and UGV resupply networks.

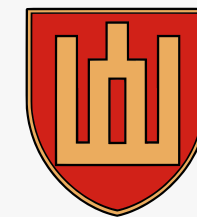


OFF GRID USE

Self-sustaining power, local AI compute, and water systems ensure full operational capability independent of local infrastructure.



Clear Deployment Plan with Client Focus on European Forces and NATO Allies – initially centered on Barrack Infrastructure Integration and Remote Training Facilities



Brave 1 (Ukraine)

Framework agreement with Government-program by the Ukrainian forces and Ministry of Defence.

Integration of systems in remote training camps and underground facilities.

network >200 locations

3rd Assault Brigade (Ukraine)

Brigade of Ukrainian Ground Forces known for its offensive operations and effectiveness.

Deployment at attack training centres and remote locations.

+20,000 soldiers

German Armed Forces

180,000-strong armed force backed by over €50 billion in annual defence spending.

Integration in barrack infrastructure for on troops and training facilities.

>200,000 soldiers total

Lithuanian Armed Forces

NATO ally committed to deterrence and the defense of Europe's eastern flank.

Integration into barrack infrastructure and NATO training scenarios.

>80,000 soldiers

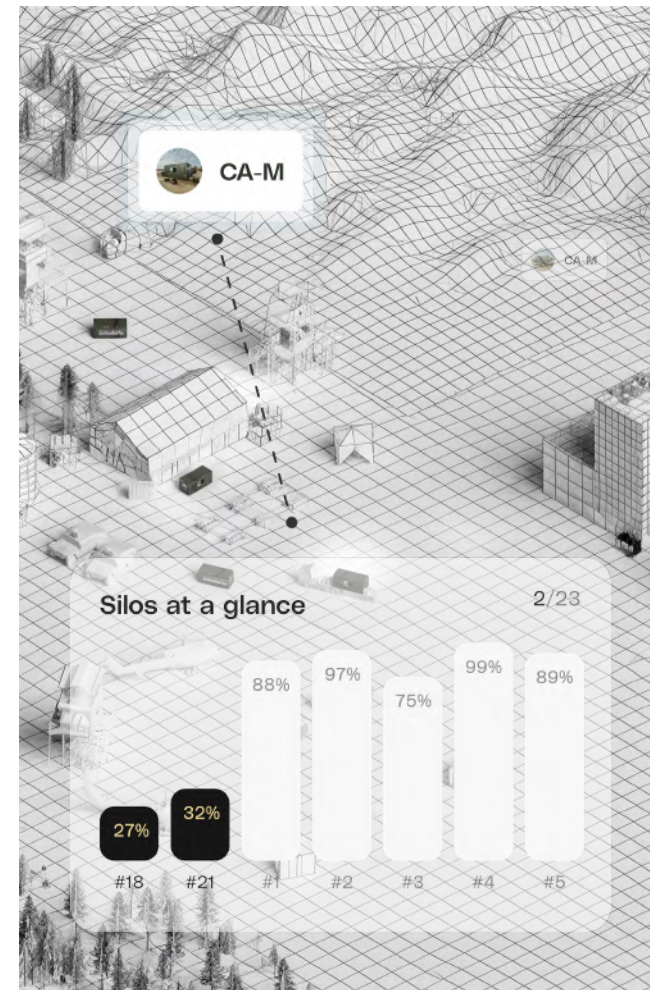


Maximus OS – A central AI-powered Operational System to Control every Data Point and Interaction Guided by Agentic AI



HYBRID INTERFACE

Proprietary POS for dynamic offer adaptation and pricing intelligence.



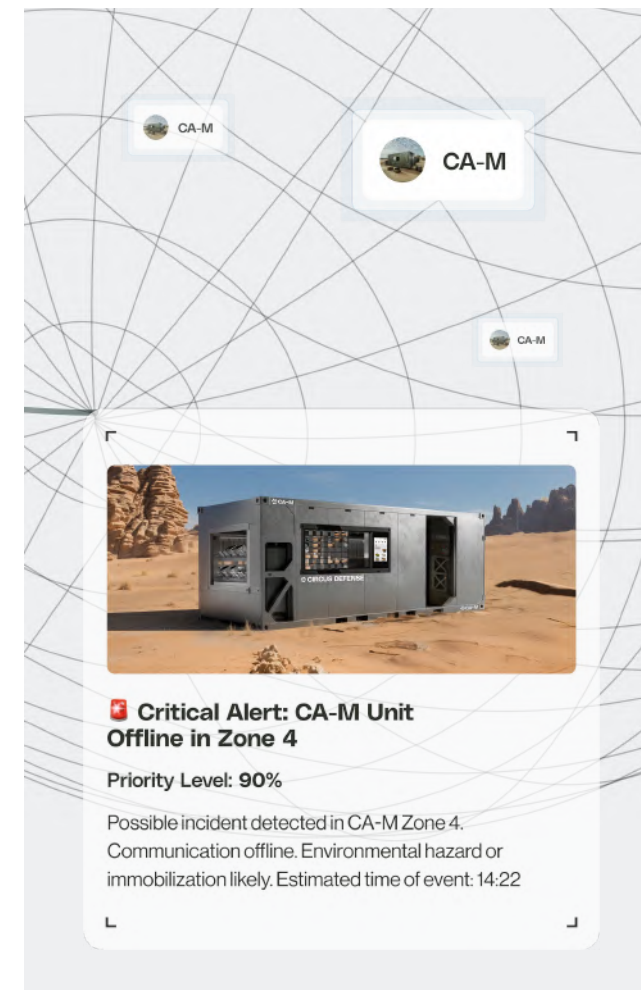
ROBOT CONSOLE

AI command hub for fleet-monitoring, diagnostics, and predictive performance.



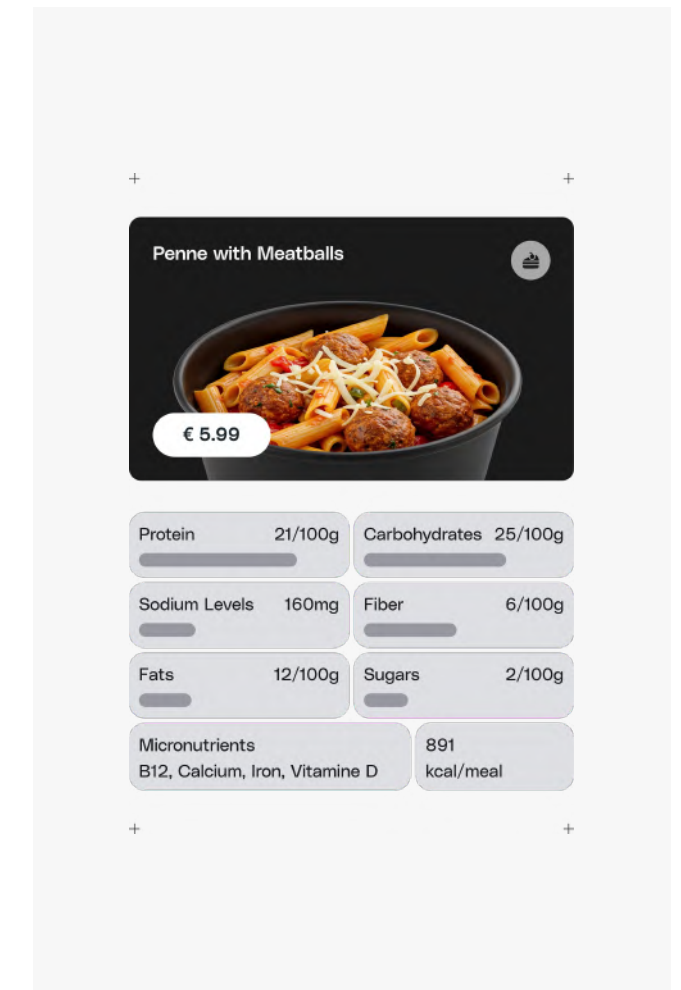
PIM (Supply Chain)

Demand and waste AI prediction engine optimizing usage in real time.



OPS AI AGENT

Agentic AI co-pilot for decision-making, incident detection.



CULINARY AI

Adaptive AI engine translating ingredient data into nutritional actions.





Tarus AI – Proprietary Multi-Modal AI Command Stack Powering Central Robotic Intelligence



Edge Perception & Visual Intelligence Layer

- Circus Visual Intelligence (CVI) object detection for bowls, tools, ingredients, hazards **powered by NVIDIA Jetson** for multi-camera edge processing
- Live anomaly detection & alerting via NVIDIA Metropolis fed to command model. **45,000+ hours** of structured camera footage used to continuously self-improve perception models-

Proprietary large-action-model (LAM)

- Trained on **multi-modal fleet logs**: millions of robot-arm motion primitives, kinematics, tool interactions, and perception outputs.
- Leverages **synthetic demonstrations** to expand training data for grasping, trajectory planning, and recipe-based action sequencing.

Digital Twin & Simulation Engine

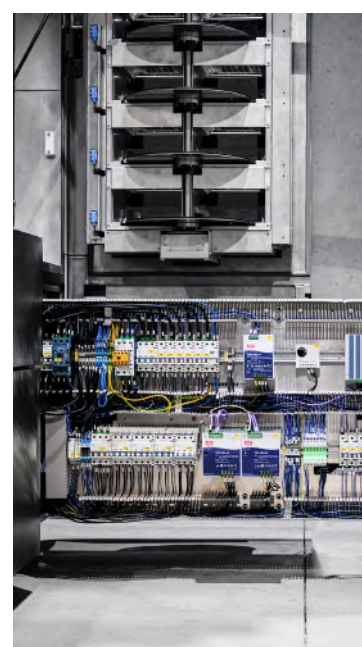
- Uses **full CA-1 digital twin datasets** (arm geometry, workspace topology, ingredient properties) to simulate tasks and create domain-randomized training data.
- Generates **synthetic edge cases** to augment real-world data and validate new behaviors pre-deployment.

Leveraging our Modular AI Robotics Architecture to Grow our Product Portfolio – Core Systems Remain Across Applications



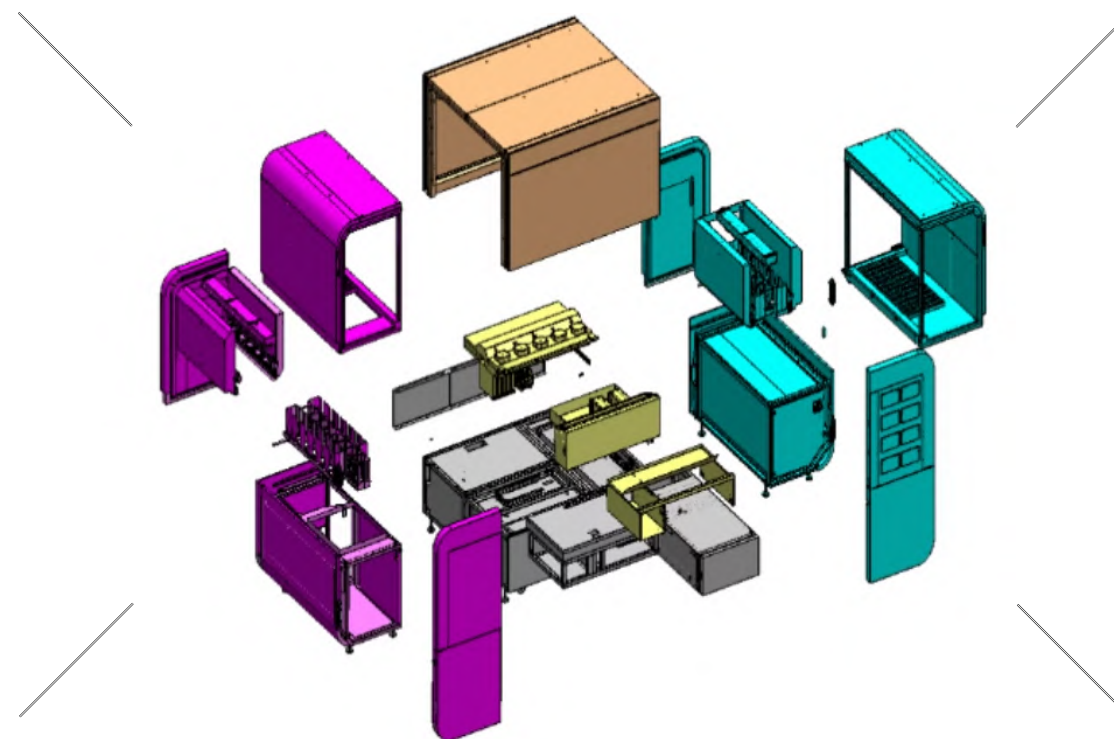
ROBOTIC CONTROL

Multi-axis motion control and adaptive grasping algorithms for human-like dexterity across robotic systems.



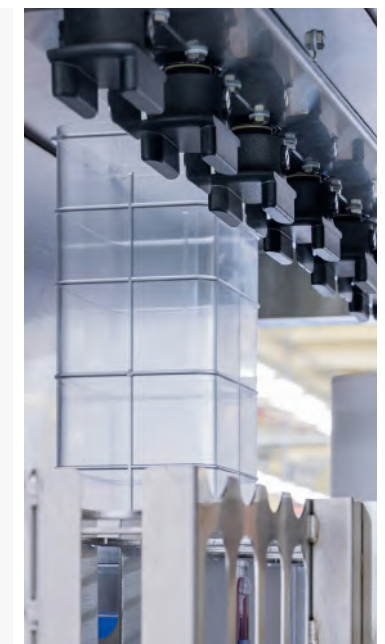
ELECTRICAL/ GPU

Proprietary electrical stack; local compute for real-time AI sensor fusion, and decision-making.



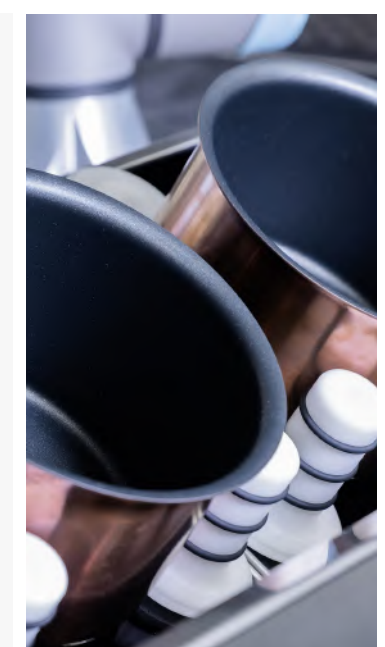
HYGIENE/ DISPENSING

Patented dispensing and self-cleaning subsystems ensure full compliance with HACCP hygiene standards.



AI INDUCTION

Intelligent induction system dynamically adjusts thermal profiles through AI feedback loops.



Global Partnership with Celestica designed for Rapid High-Volume Production

North-American Celestica (NYSE:CLS) is a \$10B global leader in high-tech manufacturing and product lifecycle services for industries like, Automotive, and Aerospace.

- **Fully outsourced** assembly lines and global service/ maintenance network
- **Access to 40+ factories globally** across US, EU, and APAC totalling over 26,000+ employees

CIRCUS X CELESTICA – FACTORY 01:

80

Modular assembly
line stations

+150

Functional
System tests

17

Max. production
output per day



CIRCUS x CELESTICA
Modular High-Volume
Production



Circus will Focus on Defence Deployment Growth, Launch of Global High-Volume Production and Product Portfolio Expansion

Building an European defence leader for embodied AI infrastructure systems.



UKRAINE DEPLOYMENT

Military go-to-market with core focus on European armed forces and active conflict zones.



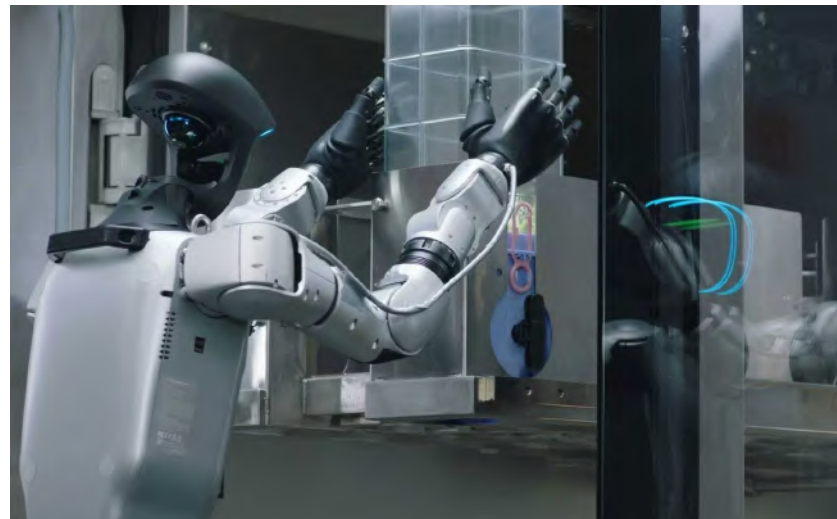
SCALING PRODUCTION

Bringing production to Europe and U.S. to accelerate defence deployments and production cycle time.



BEYOND NUTRITION

Expansion of product portfolio to autonomous logistics systems and AI multi-drone hubs.



PHYSICAL AI NETWORK

Growing ecosystem intelligence and integration of embodied systems to reach full autonomy across infrastructure services.



Guidance: Clear Path to Profitable Growth in Defence and Civilian Sector

Driven by High-Volume Production and Deployment Acceleration

2026

Net Revenue
(in EUR)

44-55M

ARR
(in EUR)

>20M

EBITDA

Negative





IR@CIRCUS-GROUP.COM

CIRCUS-GROUP.COM – CIRCUS-DEFENCE.AI

DISCLAIMER

The words “anticipate,” “assume,” “believe,” “estimate,” “expect,” “intend,” “may,” “plan,” “project,” “should,” and similar expressions are used to identify forward-looking statements. Forward-looking statements are statements that are not historical facts; they include statements about Circus SE’s beliefs and expectations and the assumptions underlying them. These statements are based on plans, estimates, and projections as they are currently available to the management of Circus SE. Forward-looking statements therefore speak only as of the date they are made, and Circus SE undertakes no obligation to correct or update any of them in light of new information or future events. By their very nature, forward-looking statements involve risks and uncertainties. These statements are based on Circus SE management’s current expectations and are subject to a number of factors and uncertainties that could cause actual results to differ materially from those described in the forward-looking statements.

Actual results may differ from those set forth in the forward-looking statements as a result of various factors (including, but not limited to, future global economic conditions, changed market conditions affecting the industry, intense competition in the markets in which we operate, costs of compliance with applicable laws, regulations and standards, diverse political, legal, economic, and other conditions affecting our markets, and other factors beyond our control). This presentation is intended to provide a general overview of Circus SE’s business and does not purport to deal with all aspects and details regarding Circus SE. Accordingly, neither Circus SE nor any of its directors, officers, employees, or advisers, nor any other person, makes any representation or warranty, express or implied, as to, and accordingly no reliance should be placed on, the accuracy or completeness of the information contained in the presentation or of the views given or implied. Neither Circus SE nor any of its directors, officers, employees, or advisers, nor any other person, shall have any liability whatsoever for any errors or omissions or any loss howsoever arising, directly or indirectly, from any use of this information or its contents or otherwise arising in connection therewith.

The material contained in this presentation reflects current legislation and the business and financial affairs of Circus SE, which are subject to change. This presentation shall not constitute an offer, nor a solicitation of an offer, for the sale or purchase of any securities or assets or to enter into any transaction. This presentation should not be relied upon to form the basis of any investment decision. In all cases, the recipient should conduct its own investigation and analysis of Circus SE and the information set forth and provided in this presentation. The recipient should not construe the contents of this presentation as legal, business, accounting, or tax advice.