

 OVERHAUL

INTELLIGENCE

[INSIDER ALERT]

\$187k Designer Goods Theft and Recovery



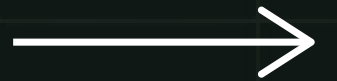
Location: New Jersey



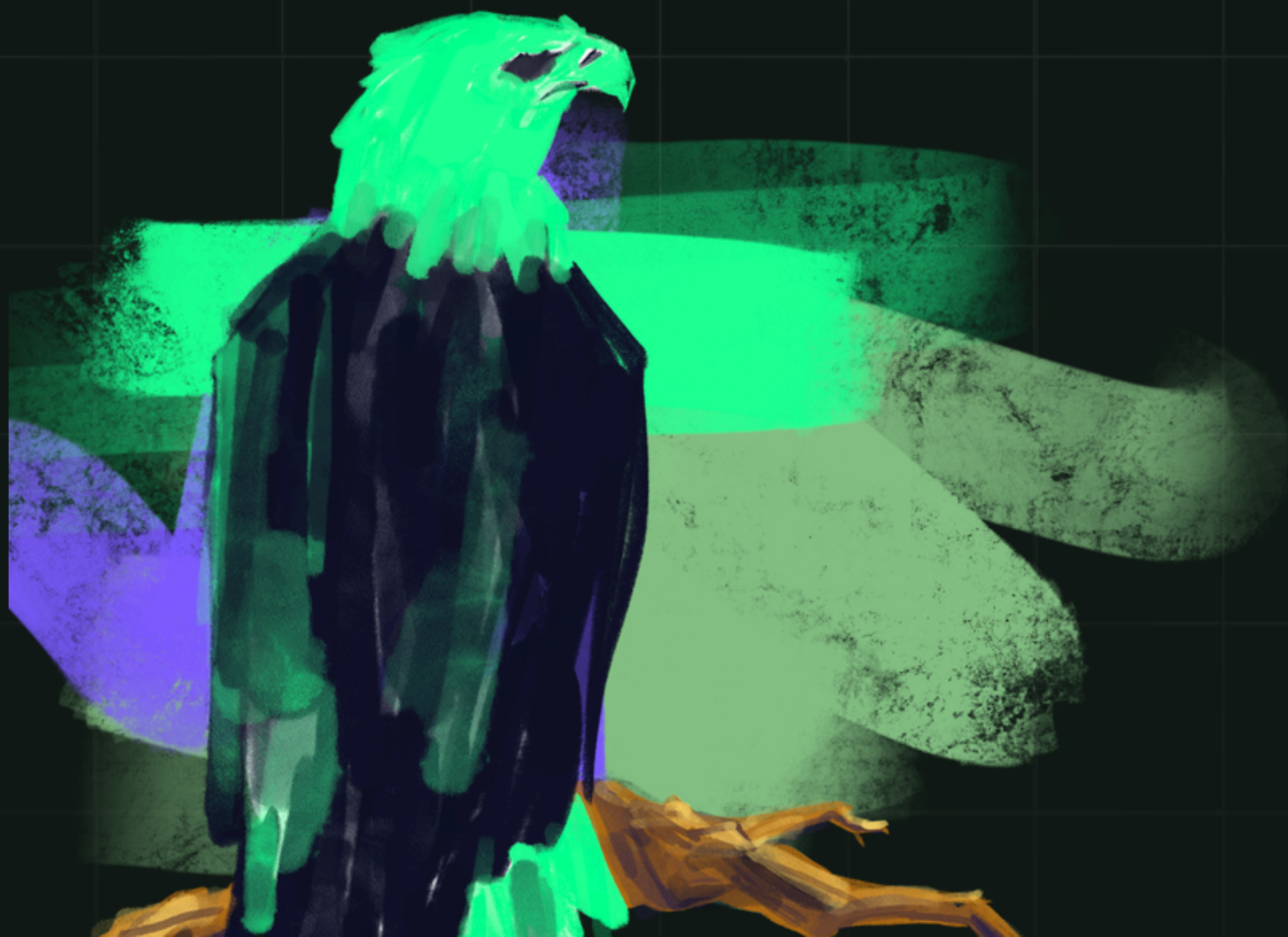
This weekend, Overhaul was instrumental in recovering a \$187,000 shipment of designer goods. The incident began when Overhaul's monitoring platform flagged an unexpected stop by the shipment. When attempts to reach the driver and carrier were unsuccessful, a rapid investigation revealed that the carrier's identity had been compromised, strongly suggesting theft. Law enforcement was immediately notified and provided with access to Overhaul's platform, which identified the shipment's recent stop and aided officers in promptly responding to the location.



Upon reaching the driver, he explained that he had received instructions via text message, purportedly from the broker, directing him to deliver the load to an alternate address in Newark. Cooperating fully with authorities, the driver provided the drop-off location. At the site, law enforcement found materials supporting the presence of the stolen goods. Leveraging reference photos supplied by the customer, authorities were able to request a search warrant for the premises.



Thanks to the rapid and coordinated efforts of law enforcement, Overhaul, and the client, the shipment was successfully recovered and is now being secured in a yard pending final delivery. This incident highlights the critical importance of immediate escalation, effective multi-party communication, and the value of real-time tracking and alerting tools. It also underscores the ongoing threat posed by social engineering and broker impersonation, emphasizing the need for robust verification procedures.



Overhaul extends sincere thanks to the New Jersey State Police and Edison Police Department for their quick response and support in recovering this shipment.

Overhaul recommends that shippers of targeted and high demand or high value products be extremely thorough in vetting brokers and carriers in their network, as well as documenting all drivers, tractors, and trailers that arrive to pick up cargo with thorough pictures that include all identifying markings on the tractor/trailer, as well as the driver and his CDL as you verify that the information being documented matches the information provided prior to the driver's arrival. Particularly with strategic or fraudulent theft methods, contextual intelligence, remote compliance monitoring, real time visibility, and an immediate escalation process with a path to effective law enforcement engagement are critical to recognizing and recovering stolen cargo.



 OVERHAUL

INTELLIGENCE

[INSIDER ALERT]

To inform LE Connect of Supply Chain Intelligence,
email our Director of Intelligence

Danny Ramon

danny.ramon@over-haul.com

[@overhaul](#)

www.over-haul.com

