

7.5 HP Heavy-duty Reciprocating Pressure Lubricated



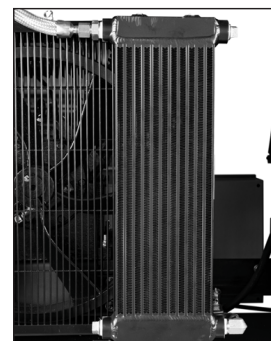
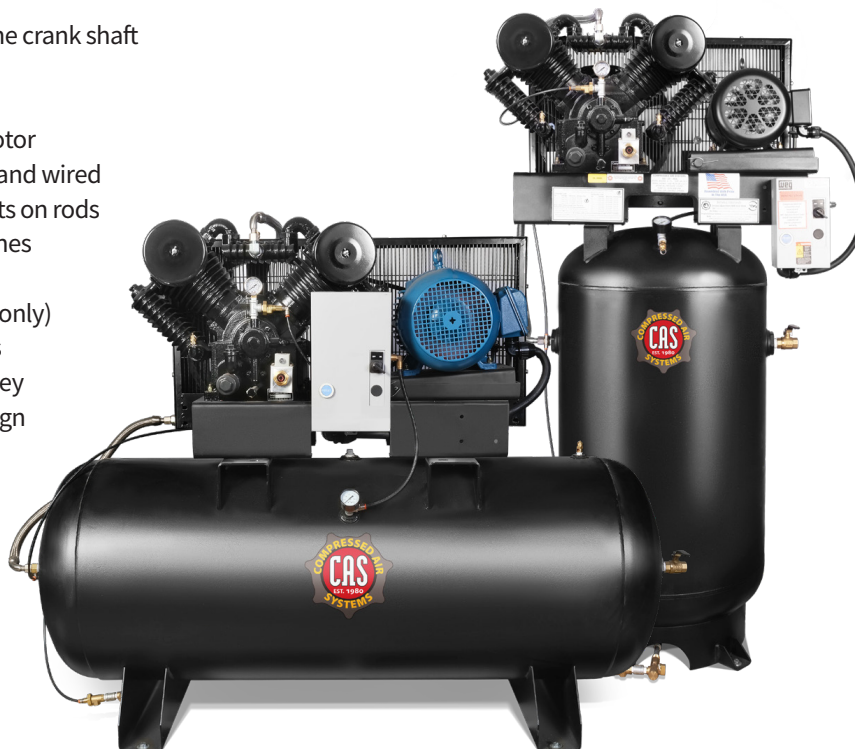
28 CFM @ 175 PSI

Features

- Heavy-duty pressure lubricated two-stage solid cast iron pump
- Disk and spring valves
- Centrifugal unloader
- Access to compressor valves without compressor head removal
- All UL electrical controls
- ASME/CRN certified air receiver
- Auto start/stop
- Bearings on both ends of the crank shaft
- Fully enclosed belt guard
- Heavy-duty air filter
- Industrial grade electric motor
- Magnetic starter mounted and wired
- Needle bearings, and inserts on rods
- Stainless steel flexible air lines
- Swedish steel valves
- TEFC drive motor (3 phase only)
- Torrington needle bearings
- 2-grove B width motor pulley
- 2-piece tank/top plate design

Elite Features

- All basic features
- Automatic tank drain
- Belt guard after cooler
- Low oil monitor
- Tank discharge ball valve
- Vibration pads
- Freight pre-paid in the 48 states & southern Canada



Air cooled after cooler on Elite models

Model	HP	CFM @ 175 PSI	Voltage	Tank	LxWxH	Weight
B71V86-PL	7.5	28	208-230/1	80 Gallon Vertical	42x24x74	850
B73V86-PL	7.5	28	208-230-480/3	80 Gallon Vertical	42x24x74	850
B71H86-PL	7.5	28	208-230/2	80 Gallon Horizontal	64x22x48	825
B73H86-PL	7.5	28	208-230-480/3	80 Gallon Horizontal	64x22x48	825
B71V126-PL	7.5	28	208-230/1	120 Gallon Vertical	43x30x78	900
B73V126-PL	7.5	28	208-230-480/3	120 Gallon Vertical	43x30x78	900
B71H126-PL	7.5	28	208-230/1	120 Gallon Horizontal	68x27x54	850
B73H126-PL	7.5	28	208-230-480/3	120 Gallon Horizontal	68x27x54	850

Add -E after model number to make Elite Model

No Start Up Kit Required

Lifetime Parts Warranty Available

Compressed Air Systems

Simplicity. It's What We Do.

compressed-air-systems.com | 1-800-531-9656 | Fax 972-352-6364

© Compressed Air Systems, LLC 10-2025



Scan to visit our website

