

Permanent Magnet Series

The Future of Compressed Air

■ Permanent Magnet Motor

- IE4 Super Premium Efficiency standard for energy savings and top-tier performance
- Liquid cooled motor and airend for enhanced thermal management and durability
- IP65 protection against dust and moisture for reliable operation in harsh conditions
- Certified to UL Standards for safety and performance

■ Rotary Screw Airend

- New improved rotor profile designed for maximum efficiency and durability
- Mounted directly to stator for zero power loss— no bearing, belts, or couplers
- Oversized rotors keep rpm at 3000 or less

■ Variable Speed Drive

- Integrated flux vector inverter with UL certification
- Wide voltage design meets C3 and EMC standards
- Built-in DC reactor ensures smooth and energy-efficient operation

■ Cool, Quiet, and Durable

- 50% oversized air/oil cooler designed to operate in ambient temperatures up to 110°F at a full 100% duty cycle
- Whisper-quiet thermostatically controlled cooling fans maintaining optimal temperatures between 175°F–195°F
- Robust steel enclosure with sound-dampening panels and integrated fork pockets, made to withstand the harshest conditions

■ Smarter in Every Sense

- A 7-inch full-color touch screen display keeps you informed with maintenance schedules and performance insights
- See the big picture with real-time stats, flow diagrams, and historical charts
- Designed for everyone, everywhere—thanks to multi-language support and RS485 connectivity for system integration



Compressed Air Systems

Simplicity. It's What We Do.

compressed-air-systems.com | 1-800-531-9656 | Fax 972-352-6364

© Compressed Air Systems, LLC



Scan to visit our website



Best In Class

Made with the Highest Quality Components Available



Heavy-Duty Nano Scale Inlet Filter

- 99.9% removal efficiency at 0.3 micron
- Pressure drop indicator



Smart Controls

- 7-inch full color touchscreen display
- Real-time operation, maintenance, and alarm information
- Integrate up to 8 compressors in 1 complete system



Innovative Flux Vector Inverter

- Intelligent PID flow regulation
- Constant pressure control
- Robust enclosure with independent cooling system



Classic Cooler Design

- 50% oversized for high ambient temperatures
- Anti-corrosive coating
- Easy access for maintenance



Heavy Duty Oil Filters

- Oil particles can be controlled at .1 micron
- High efficiency contaminant removal ensures a smooth and well lubricated system



Oil Sump Separator

- Designed for maximum efficiency and easy maintenance
- Oil carry-over less than 3ppm
- System pressure loss less than .02mpa

Best In Class



All Steel Internal Pipe System

- Increased longevity and decreased maintenance
- Less pipe friction loss



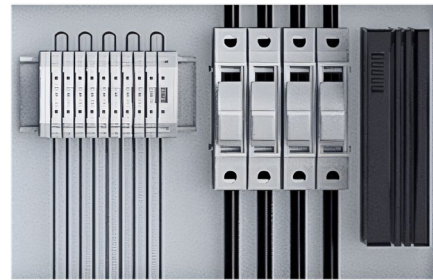
Cooling Fan

- VSD control
- High capacity, low power consumption, and low noise level



Optimized Inlet Valve

- Large suction area with 700mmHg vacuum degree
- 100% aluminum
- Maintenance free design

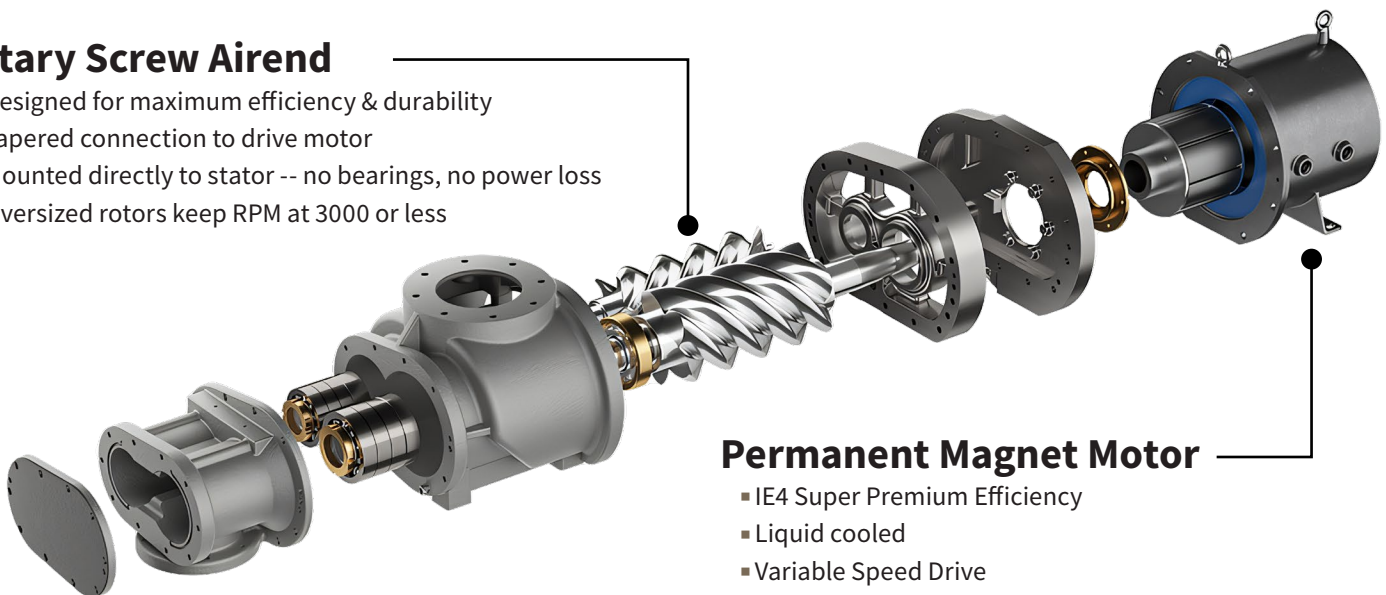


Electrical Cabinet

- Simple and reliable electrical components
- Built in main power shut-off switch

Rotary Screw Airoend

- Designed for maximum efficiency & durability
- Tapered connection to drive motor
- Mounted directly to stator -- no bearings, no power loss
- Oversized rotors keep RPM at 3000 or less



Permanent Magnet Motor

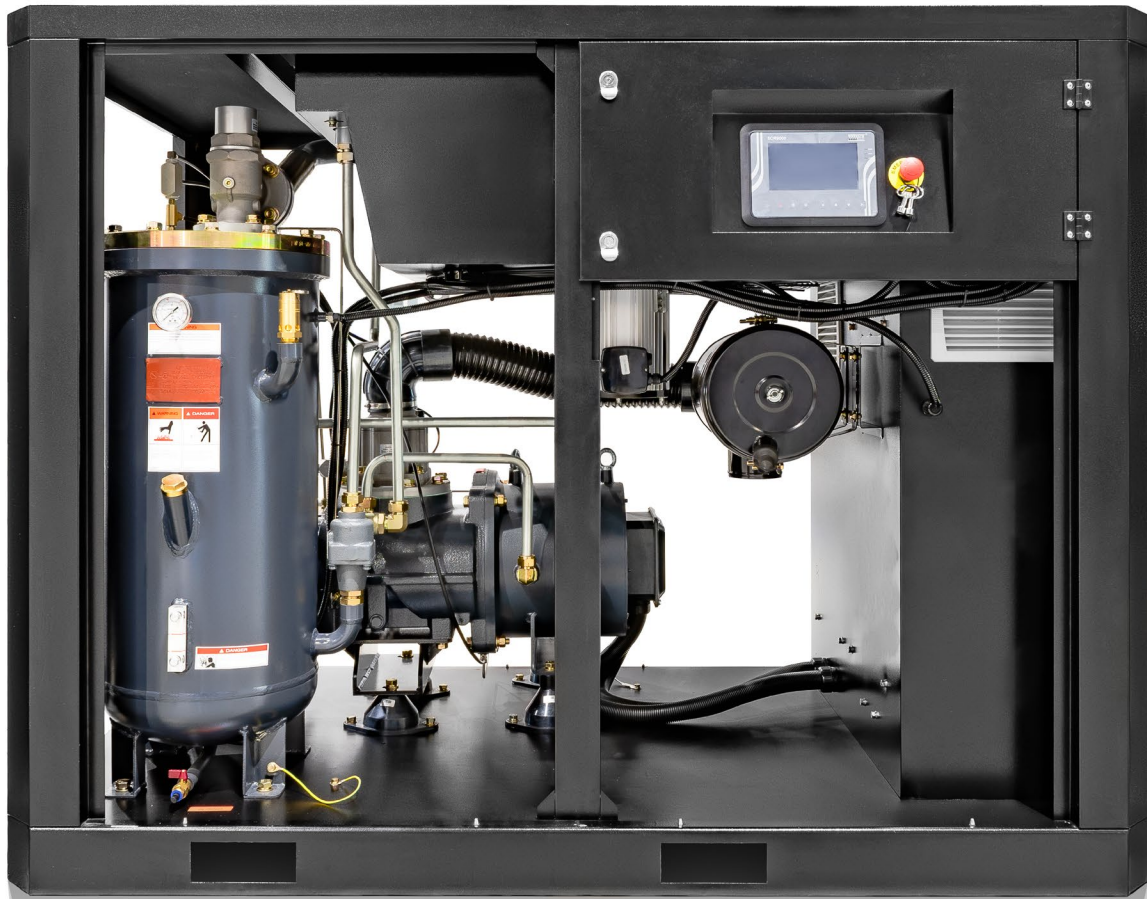
- IE4 Super Premium Efficiency
- Liquid cooled
- Variable Speed Drive
- IP65 protection

Permanent Magnet Series

Available from 10 to 150 Horsepower

Model	HP	CFM @ 125 PSI	CFM @ 150 PSI	Phase	Voltage	dBA	Weight	Length	Width	Height
RS10ENC-PM	10	39	34	3	208-230-460	65±3	838	58	36	72
RS15ENC-PM	15	62	53	3	208-230-460	67±3	992	60	38	76
RS20ENC-PM	20	85	71	3	208-230-460	67±3	1058	60	38	76
RS30ENC-PM	30	124	109	3	208-230-460	67±3	1098	59	41	59
RS50ENC-PM	50	215	187	3	208-230-460	72±3	1499	55	39	60
RS60ENC-PM	60	254	230	3	208-230-460	73±3	1653	55	39	60
RS75ENC-PM	75	342	320	3	208-230-460	75±3	2976	79	47	61
RS100ENC-PM	100	459	406	3	208-230-460	77±3	3197	79	47	61
RS125ENC-PM	125	665	577	3	208-230-460	78±3	4730	90	60	77
RS150ENC-PM	150	847	741	3	208-230-460	78±3	6285	103	65	81

To make package "CRD" configuration add -CRD to the end of the model number. All dimensions are in inches, weight is in pounds



Compressed Air Systems

Simplicity. It's What We Do.

compressed-air-systems.com | 1-800-531-9656 | Fax 972-352-6364

© Compressed Air Systems, LLC



Scan to visit our website

