

# Family Handbook

## 2024-2025



**Nicola Grant, Principal**  
**Phuong Huynh, Assistant Principal**  
**Ben Pinsky, Assistant Principal**  
**Samantha Troman, Teacher-in-Charge ECC**  
**Stephanie Mastropaolo, Special Education Intervention Teacher**

# Table of Contents

## Welcome to PS 235

Mission Statement.....	2
Vision Statement.....	3
Instructional Focus.....	3
Building Locations.....	3
Administration.....	3
Academic Calendar.....	4
Academic Reports.....	5
Attendance.....	5
Bell Schedule.....	6
Birthday Celebrations.....	6
Communication.....	6
Code of Conduct.....	6
Discipline Code at PS 235.....	6
Dismissal Procedures.....	7
Dismissal Procedures during inclement weather.....	7
End of Day Pick-Up Procedure.....	8
Electronics Policy.....	8
Emergency Drills.....	8
Family Income Inquiry Forms.....	8
Field Trips.....	9
Instructional Programs and Resources.....	9
Meet the Staff Night.....	10
Money.....	11
Morning Entry Procedures.....	11
Morning Entry Procedures during inclement weather.....	11
Parent Teacher Conference hours(Virtual).....	11
Out of Lunchroom Suspension.....	12
Preventing Bullying.....	12
Reporting Bullying.....	12
Sampling of School Events.....	12
School Life (Climate and Guidelines).....	13
School Nurse.....	13
School Services.....	13
School Technology.....	13
Security/Safety.....	13
Technology Responsibility Policy.....	14
Test Schedules.....	14
Transportation.....	15
Uniform Policy.....	15
Parent-Teacher Association.....	15



# Mission Statement

PS235's staff, parents, and community are dedicated to providing a whole-hearted student experience that integrates academics with **vibrant arts programs** in a positive, nurturing, and inclusive environment. We uphold the principle of "No Place for Hate", aiming to foster joy in learning while maximizing each student's potential and growth through a comprehensive education. Every student deserves access to relevant and respectful educational experiences in every classroom and school.

# Vision Statement

Inspire independent thinking and personal growth, blending academics with a vibrant arts program to maximize each student's potential and innate talents. Our goal is to provide every student with relevant and rigorous educational experiences that bring joy to learning. Together, we strive to empower students to be positive forces for change in their communities.

# Instructional Focus

In all grade levels, ELA/literacy teachers will implement Wit and Wisdom with fidelity and authenticity. Math and Science teachers will design standards-aligned tasks that enable students to make their thinking visible through explanation and demonstration of their reasoning. Teachers use data and artifacts of students' reasoning to determine next steps in their teaching and planning for that standard to help all students grow and reach mastery.

# Building Locations

The **Main Building** is located at 525 Lenox Road

The **Early Childhood Center (ECC)** is located at 5811 Ditmas Avenue, Brooklyn, NY 11203  
Entrance on East 58<sup>th</sup> between Ditmas & Clarendon

# Administration

All members of the administration spend much of the day out of their offices. Administrators are visiting classrooms, meeting with teachers & students, attending assemblies or in the lunchroom or yard. If you wish to speak with an administrator you can call and leave a message or send an email. **Please do not show up expecting to be able to see someone without an appointment as there may not be anyone available to speak with you.** Emails will be answered in a timely manner.

Position	Name	Phone	Email@schools.nyc.gov
Principal	Nicola Grant	718 773-4869	<a href="mailto:ngrant4@schools.nyc.gov">ngrant4@schools.nyc.gov</a>
Assistant Principal	Phuong Huynh	718 773-4869	<a href="mailto:phuynh@schools.nyc.gov">phuynh@schools.nyc.gov</a>
Assistant Principal	Ben Pinsky	718 773-4869	<a href="mailto:bpinsky2@schools.nyc.gov">bpinsky2@schools.nyc.gov</a>
Teacher in Charge ECC	Samantha Troman	718 629-6875	<a href="mailto:stroman2@schools.nyc.gov">stroman2@schools.nyc.gov</a>
Special Education Intervention Teacher	Stephanie Mastropaolo	718 773-4869	<a href="mailto:srucki@schools.nyc.gov">srucki@schools.nyc.gov</a>

## Parent Coordinator

**Ms. Cumbo** is the Parent Coordinator for all buildings. She is located in room 103 in the **main building**. She may be reached by calling 718-773-4869 or by email at [MCumbo@school.nyc.gov](mailto:MCumbo@school.nyc.gov)

## School Secretaries

Main Building: Ms. Ellison and Ms. Miller



### **Department of Health Nurses**

Main Building: Nurse Sannon

ECC: Nurse Singh

### **Main Building Health Aide**

Ms. Charles

### **School Counseling Department**

**School Psychologist:** Ms. Philbert

**Social Worker:** Ms. Castro

**Guidance:** Ms. K. Grant Williams

## **Academic Calendar**

<b>Date</b>	<b>Event</b>
Thurs, September 5	First Day of School <b>3K, Pre-K &amp; Kindergarten</b> has full day of school
Thursday, September 12 Virtual Meetings	<b>Main &amp; ECC - Family Night 4:30-7:30pm</b> Meet your child's teachers
Thurs & Fri Oct. 3 & 4	Rosh Hashanah - <b>School closed</b>
Mon, October 14	Indigenous People/Italian Heritage Day - <b>School closed</b>
Fri, November 1	Diwali - <b>School closed</b>
Tues, November 5	Election Day – <b>No school for students</b>
Thurs, November 7 Virtual Meeting	<b>Main &amp; ECC Parent-Teacher Conference</b> Grades 3K-5 students. <b>No school for students</b>
Mon, November 11	Veteran's Day - <b>School closed</b>
Thurs & Fri Nov. 28-29	Thanksgiving Recess - <b>School closed</b>
Mon, Dec 23-Wed. Jan 1	Winter Recess - <b>School closed</b>
Mon, January 20, <b>2025</b>	Rev. Dr. Martin Luther King Day – <b>School closed</b>
Wed, January 29	Lunar New Year - <b>School closed</b>
Feb 17 – Feb 21	Mid-Winter Recess – <b>School closed</b>
Thurs, March 6 Virtual Meeting	<b>Main &amp; ECC Parent-Teacher Conference</b> Grades 3K-5 students. <b>No school for students</b>
Mon, March 31	Eid al-Fitr – <b>School closed</b>
Mon, April 14-Fri, April 18	Spring Recess - <b>Schools closed</b>
Thurs, May 1 Virtual Meeting	<b>Main &amp; ECC – Parent Teacher Conference</b> <b>"What to expect next year" 4:30-7:30pm</b>
Mon, May 26	Memorial Day - <b>School closed</b>
Thurs, June 6	Conference day - <b>No school for students</b>
Thurs, June 6	Eid al-Adha – <b>School closed</b>
Fri, June 7	Clerical Day - <b>No School for students</b>
Thurs, June 19	Juneteenth– <b>School closed</b>
Thurs, June 26	Last Day of school. <b>Dismissal at 2:20pm</b>

*\* Please remember to check your child's backpack for notices about upcoming events*

# Academic Reports

## Report Cards

Marking Periods	Dates	Report Card Distribution
1	September 5 to October 31	November 6, 2024
2	November 4 to January 10	January 23, 2024
3	January 13 to March 21	April 16, 2024
4	March 24 to June 26	June 26, 2025

## Uniform Grading Scale (K-5) for Marking Period 1 through 4

Percentage	Grade on Report Card	Criteria
85-100	4	<b>Excels Grade Level Standards</b> Students demonstrate knowledge, skills, and practices embodied by the Learning Standards that are considered more than sufficient for the expectations at this grade.
65-84	3	<b>Meeting Grade Level Standards (Proficient)</b> Students demonstrate knowledge, skills, and practices embodied by the Learning Standards that are considered sufficient for the expectations at this grade.
45-64	2	<b>Below Grade Level Standards</b> Students demonstrate knowledge, skills, and practices embodied by the Learning Standards that are considered partial but insufficient for the expectations at this grade. Students performing at Level 2 are considered on track to meet current New York high school graduation requirements but are not yet proficient in Learning Standards at this grade.
0-44	1	<b>Well Below Grade Level Standards</b> Students may demonstrate limited knowledge, skills, and practices embodied by the Learning Standards that are considered insufficient for the expectations at this grade.

# Attendance

You will receive an automated “text” on the day your child is marked absent. ***Students are expected to be in school every day for the entire day.*** Should your child be out for any reason, please send in a written note on the day they return to school.

Please note that attendance correlates to performance. If your child is regularly absent from school, they are likely to fall behind academically and socially.

**We track the following: absences, lateness, and early dismissals.**

## Early Sign Out

Your child will only be released to people that are listed on the blue emergency card. An older sibling is not allowed to pick up a student during the school day. If you need to pick up your child before the end of the school day please send a note to your child’s teacher. This will ensure that your child is ready and has homework ahead of time. Upon arrival follow all security procedures as found in this Family Handbook

Please try not to make appointments for your child during the school day as it interrupts instruction **for all**.

**PLEASE NOTE: It is important for children to remain in school to learn. Please use early sign out in emergency situations only.**

# Bell Schedule

Breakfast Hours: 7:30am- 7:50am ([Breakfast Menu](#))

Lunch Hours: 10:45am-11:35am ([Daily Lunch Menu](#))

Daily School Hours: 8:00am- 2:10-2:20pm (depending on the grade)

## Birthday Celebrations

In-school birthday celebrations are a simple acknowledgement of a student's birthday. The in-school birthday celebration should not be considered the child's official birthday party. In school celebrations are 15 minutes maximum.

Due to food allergies, dietary restrictions and/or religious observances, parents/guardians may drop off individually wrapped goodies (does not have to be a food item), at the beginning of the day for the teacher to distribute at the end of the day. Families can then decide if the item is okay for their child once they are at home. Highly sweetened snacks are discouraged.

## Communication

**School Notices: we use eight (8) methods of communication with families—emails, written notices, phone calls, text messages, school app, school website, Google Classroom and Class Dojo. Our main methods of communication are emails, school app, Class Dojo and written notices.** Please check your email, school app and child's folder daily for notices and if necessary sign and return to the teacher promptly.

### Contacting the School

If you have any concerns regarding your child please adhere to the following protocol:

**First contact:** Teacher

**Second:** School Counselor or Parent Coordinator

***\*Depending on the nature of the issue***

**Third:** Administration

We encourage you to contact the school whenever there are questions or concerns. If you desire to schedule a conference with a specific teacher or administrator, please make an appointment. Please understand that not all times of the day are good and we will make every effort to accommodate you. Teachers and paraprofessionals have designated days to contact families during the week, Tuesdays through Fridays, excluding holidays and school closures.

## Code of Conduct

1. If a student is involved in any physical altercation or threatening offenses as outlined in the NYCPS Discipline Code, that student may receive a teacher removal, Principal or Superintendent Suspension. This can result in the student being removed from the classroom for a period of time. A meeting with the student's parent/guardian and school administration will be required.
2. Any type of physical fighting, whether in self-defense or otherwise, cyber-bullying and being a consistent disruption to the learning environment may result in an out of classroom suspension.
3. Teacher removals: Teachers may remove a student from the classroom for disruptive/and or disrespectful behavior towards adults/and or other students. Three (3) teacher removals may cause a student suspension.

## Discipline Code at PS 235

It is our goal to have a safe, respectful school environment for all students. Along with the Citywide Discipline Code we stress the following; **students involved in any altercations with another student must tell an adult immediately.** We do not allow for students to take matters into their own hands as it further exacerbates the situation. We encourage peaceful resolutions. **Keep in mind that even in defense, both students will be**

**reprimanded and receive calls home.** It is also imperative that all students remain respectful to **every** adult in the school. This includes all personnel and is especially significant during lunch and recess.

**NYC Dept. of Education Discipline** Code can be found online at:

<https://www.schools.nyc.gov/school-life/know-your-rights/discipline-code>

We have a zero-tolerance policy against acts of harassment, discrimination, or bullying. This includes behaviors that take place outside of school.

## **Dismissal Procedures**

**3K, Pre-K, and Ms. Bryan-Dudley's** students are brought directly into the mini-building lunchroom entrance on East 39<sup>th</sup> Street at 2:10.

**Grades 1 & 2** students are brought into the school yard at 2:10 PM. Students who are not met by a parent are brought into the auditorium at 2:20 PM. **It is important to be on time and it is best to pick up your child from the schoolyard as the auditorium becomes very crowded.**

**Grades 3-5** are dismissed into the school yard at 2:15 PM.

## **Dismissal Procedures during inclement weather**

**3K, Pre-K, and Ms. Bryan-Dudley's** students are brought directly into the mini-building lunchroom entrance on East 39<sup>th</sup> Street at 2:10.

**Grades 1 -3** students are brought into the auditorium at 2:10 PM.

**Grades 4 & 5** students are brought into the main cafeteria at 2:15 PM.

**It is important to be patient and courteous with all persons as the auditorium and cafeteria becomes very crowded.**

**ECC Shuttle Buses** arrive at the main building beginning at 2:20. Parents may wait for the buses at the **East 39<sup>th</sup>** Street entrance. Please do not block the entrance. Students who come off the bus will be escorted directly into the mini-building lunchroom. It is important to be on time for the arrival of your children from the bus as the main building is large. **This is overwhelming for the kindergarten children.**

**Vans/After School Pick-Up** Any child, who regularly goes home by van or is picked up by after-school and is not going home that way on a particular day **MUST HAVE** a written note from home stating that and who will be picking them up. Without a written note, your child will be sent home in their usual way.

## **Double Parking**

Please note that double parking is ticketable by law enforcement always. Parking by the Lenox Road, East 39<sup>th</sup> and East 40<sup>th</sup> Street entrance/exit makes it difficult for the school buses from the ECC during morning pick-up and especially afternoon drop-off. Please do not block the entrance/exit while standing and waiting for your children to come off the bus as it prevents the other students from entering the building. Due to the traffic that is being created, NYPD said they will be coming to the school to both ticket and tow cars double parked.

**Engine Idling Law:** It is illegal to leave your car engine running for longer than one minute anywhere near a school. Fines begin at \$350.

# **End of Day Pick-Up Procedure**

It is imperative that all students are picked from the school no later than 2:20. It is not acceptable for children to be waiting outside of the school after 2:20 to be picked up. It is the parent's responsibility to make sure that any private van drivers or the person picking up your child is aware that your child must be picked up no later than 2:20 daily. Any child not picked up by 2:20 will be brought up to the auditorium. Your child's name will be recorded and you will be required to sign your child out with the time they were picked up. Repeated late pick-up will result in a warning letter and official measures will be taken if late pick-up continues.

**We are mindful that emergencies can happen and pick-up plans on occasion can change. It is important for you to have alternate pick-up arrangements for just that reason. If an emergency, regarding pick-up arises, please call the school before 2:00 to let us know who will be picking your child up. If you cannot get through, call back at 2:30.**

## **Electronics Policy**

Cell phones, SMART phones, iPods, MP 3 players, cameras and other valuable items that may cause a distraction are to be turned off upon arrival to the school building before 8:00 and are not allowed to be turned back on until after dismissal at 2:20. All electronic devices must be turned off and out of sight at all times throughout the day.

**The school is not responsible if any electronic items brought to school are lost, stolen or broken. If the items are seen, they will be confiscated. Confiscated items will be available for pick up by a parent or guardian the following school day from 8:30-1:30 p.m.**

## **Emergency Blue Contact Cards**

It is imperative that all families complete and return **ALL 3 blue emergency contact cards**. It is extremely important that we have **accurate** information on each of these cards. **The blue contact cards must be kept up to date at all** times with current, working phone numbers and physical addresses. Please include an email address and cell phone number. Include an alternate contact number. All information is kept confidential. ***\*To update your physical address, email address, phone number, contact and/or pick-up information on your Blue Card you must update your information in NYC Schools Account <https://www.schoolsaccount.nyc/>***

## **Emergency Drills** **(Fire drills/Evacuations and Lockdowns)**

Fire drills and lockdown drills are held throughout the year to familiarize students and staff with safety procedures if ever needed. Families will be notified in advance of upcoming drills.

**Smoking is prohibited on and around school grounds.**

## **Evacuation Locations**

In the event of an emergency in which the school must evacuate the building, our students will relocate as follows:

- Main Building to M.S. 2, The Parkside Preparatory School
- Early Childhood Center to Nazareth High School

## **Family Income Inquiry Forms**

***Families, regardless of income, are asked to complete a 2024-2025 Family Income Inquiry Form (formerly known as School Meals Form) so that our school can receive additional funding.*** You do not have to give any income information if you are certain that you don't qualify, however the NYCPs asks that families submit the form. It is important that you return your family's income inquiry form or complete it online at <https://www.myschoolapps.com/> by **December 13, 2024**. The school's zip code is 11203.

Remember, **families need to complete a 2024-2025 Family Income Inquiry Form (formerly known as School Meals Form)**. Submit only one form for all children in the household attending school in grades 3K through High School.

We greatly appreciate your support and cooperation.

## **Field Trips**

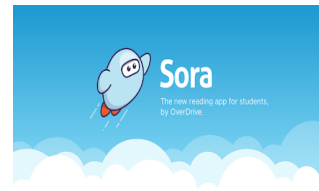
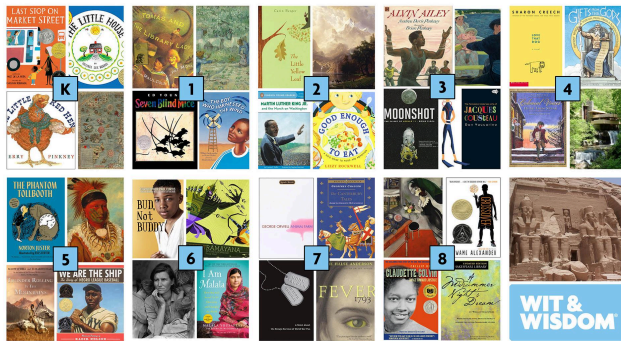
Any student whose behavior may create an unsafe situation when being taken out of the building for a class trip will be excused from trips. This will be based on teacher discretion and consultation with administration. In some cases, the parent may be asked to accompany the student if they are to be permitted to go. **The classroom teacher will notify the parent in advance.**



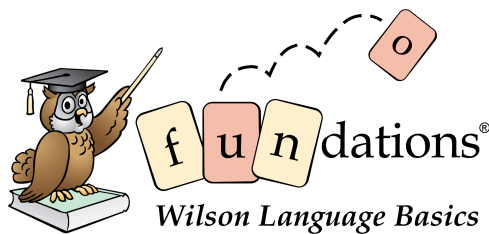


# Instructional Programs and Resources

## Literacy and Math



Google Classroom



NYC Department of Education

Sign In

User name  
  
 Password  
  
 Sign In

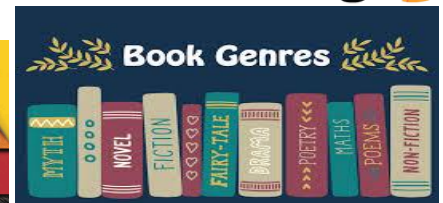
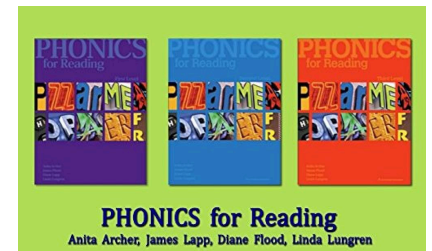
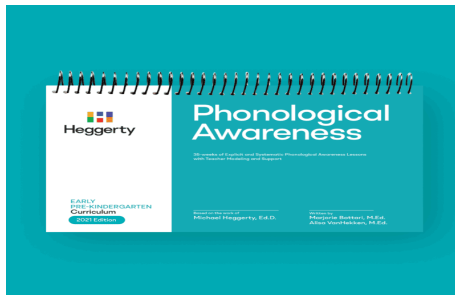
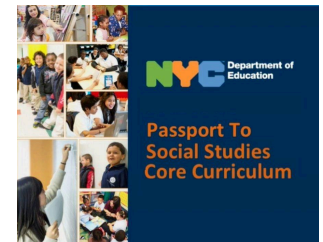


enVision Mathematics

Kids See the Math. Teachers See Results.



DOE Employees  
 Your User name is your DOE email without @schools.nyc.gov



# Meet the Staff Night

Families get to Meet & Greet the staff. Learn about classroom expectations and routines. See dates and time below:  
**Main Building and Early Childhood Center Family Nights will be held through Zoom meeting links on Thursday, September 12th from 4:30 – 7:30 and again on Thursday, May 1st from 4:30 – 7:30**

## Money

At the Early Childhood Center and the Main Building nothing is sold without a flyer going home from the school. Please **do not send your children with money.**

When sending in money to school for any reason, trip, No Place for Hate, PTA dues, Senior dues, bake sale, Scholastic book money, etc., it must always be in a sealed envelope with your child's name and teacher on the outside.

## Morning Entry Procedures

**3K, Pre-K, and Ms. Bryan-Dudley's** students are brought directly into East 39<sup>th</sup> side of the main building at 8:00am.

**Early Childhood Center** students are brought directly to the main building entrance and staff escort them to the auditorium where they wait for the shuttle bus. A school aide and paraprofessionals will make sure your child is seated and seat belted. Parents are not permitted on the buses.

**Main Building** Doors open promptly at 7:30 AM. We strongly encourage you to never drop your child off before 7:30 AM as they will be waiting outside without supervision. Students wishing to have breakfast need to arrive as close to 7:30 AM as possible and go immediately for breakfast. **Students eating breakfast must be mindful of the time as they are required to be on-line with their teacher at 8:00 AM or they will be marked absent.**

\*Parents please be mindful that the morning line-up is not the time to meet with your child's teacher. Teachers must take attendance and begin instruction at 8:00. If you wish to speak with your child's teacher, please make an appointment by emailing the teacher and copy the grade supervisor.

## Morning Entry Procedures during inclement weather

**3K, Pre-K, and Ms. Bryan-Dudley's** students are brought directly into East 39<sup>th</sup> side of the main building at 8:00am.

**Early Childhood Center** students are brought directly to the main building entrance and staff escort them to the auditorium where they wait for the shuttle bus. A school aide and paraprofessionals will make sure your child is seated and seat belted. Parents are not permitted on the buses.

**Grade 1 to 5 Students** Enter through the main entrance and walk into the auditorium. **Grades 1 to 3** will find their **assigned seats in the auditorium.** **Grades 4 and 5** walk up to the **3<sup>rd</sup> floor gym and wait in their assigned line up spots.** Students wishing to have breakfast need to arrive as close to 7:30 AM as possible and go immediately for breakfast. Students eating breakfast must be mindful of the time as they are required to be on-line with their teacher at 8:00 AM or they will be marked absent.

## NYC Schools Account

We will use an automated message system to contact you. It will be sending you emails, TEXT MESSAGES and Robo Calls. Please reach out to Parent Coordinator, Ms. Cumbo for the creation code.



# Parent Teacher Conference hours(Virtual)

Afternoon hours are from 12:30 – 2:30 PM.

Evening hours are from 4:30 – 7:30 PM

Grades 3K - 5 virtual Parent Teacher Conferences will be held on November 7th and March 6th

## Out of Lunchroom Suspension

Inappropriate behavior during lunchtime may result in a suspension from the lunchroom. Inappropriate behavior includes: consistently being out of his/her seat, running around the lunchroom, throwing food and disrespecting the adults in charge. It is **mandatory** that all students are quiet when the whistle blows, as it is often to make an announcement. Maintaining order in the lunchroom is paramount in keeping a **safe environment for all**.

### School Bus Suspension (ECC)

Students, who are disrespectful to the bus driver, remove their seat belts, scream on the bus, get out of their seats and/or fight may be suspended from the Early Childhood Center shuttle bus. It is then the parent's responsibility to bring the student to and from school during the bus suspension.

**Your child's safety while on the shuttle bus is our main concern.**

**Please remind your children to keep their seatbelts on and always stay in their seats.**

## Preventing Bullying

Respect toward others is one of our most important principles. It is never okay to engage in harassing, bullying, or discriminatory conduct. Students are responsible for their own actions, regardless of how others may be acting. While students do not have to be friends with every single student at school, they should always be respectful.

## Reporting Bullying

Students should tell their teacher, school counselor, or member of the school administration team, or another adult (including a parent or guardian) right away if they believe they or someone they know are being harassed, discriminated against, or bullied. Parents and guardians may also report potential acts of harassment, discrimination, or bullying to teachers and administrators, either orally or in writing. There will be no retaliation against anyone who reports or assists in the investigation of potential acts of harassment, discrimination, or bullying.

## Sampling of School Events

Parents are welcome to **attend and volunteer** at these events.

September	Family Night – Meet the teachers, Attendance Spirit Week, American Cancer Kick Off
October	Cancer Walk at PS235 and Coney Island, Pink Friday's, Unity Day, PTA Candy Sale, Book Character Day
November	Student Council Election, Parent-Teacher Conferences, Picture Day, Spelling Bee, Counting Fee, Giving Thanks Feast
December	TOYS for TOTS, City Harvest/Canned Food Drive, School Spirit Week
January	School Counselor Week, Scholastic Book Sale, Winter Student, Staff and Family Talent Show,
February	Black History Spirit Week, Respect for All Week, 100th Day Celebration, Attendance Celebration, Candygram, Science Fair
March	Pi Day Celebration, National SEL Day, College and Career Week
April	Poetry Slam, Math Jeopardy
May	Mother's Day Boutique, NDI 4th Grade Performance, 5th Grade Shakespeare Performance, Field Day
June	Father's Day Celebration, Dance Festival, Literacy Day, School-Wide Art Show, 3K, PreK, Kindergarten and Grade 5 Stepping Up Activities

# School Life (Climate and Guidelines)

The New York City Department of Education is committed to ensuring that our schools are safe, secure, and orderly environments in which teaching and learning take place every day. The Citywide Standards of Discipline and Intervention Measures provide a comprehensive description of unacceptable behavior, including incidents involving the internet, drugs, weapons and fighting. It includes a range of permissible disciplinary and intervention measures which addresses student behavior.

Each September, all students will receive a parent letter giving a basic outline of the discipline code and a behavioral contract. Please review and discuss the contents of the letter with your child. Be sure that both you and your child sign and return the behavioral contract to your child's teacher. The entire discipline code can be found on line at:

<https://www.schools.nyc.gov/about-us/policies/chancellors-regulations>

## School Nurse

Parents need to inform the school nurse and teachers of any illnesses, allergies, or conditions their child may have. In order for medication (long term only) to be administered at school, a **504 form** must be completed by a physician and parent and returned to the school each September.

## School Services

**Breakfast** is the most important meal of the day. All students are eligible for free breakfast. If your child does not eat breakfast in school, please make sure that they eat a healthy breakfast at home. **Please note that students must go to breakfast immediately upon arrival**, anyone arriving at school after 7:50 am will not have adequate time to eat breakfast before the 8:00 start of the school day. Students who are not on their lines at 8:00 (even if they are at breakfast) will be marked late.

**Lunch:** There is NO charge for lunch.

## School Technology

All students participate in a digital curriculum; we provide all students with laptops to support digital learning. Students learn [digital citizenship](#) to prepare them for the increased digital workload in middle school.

These laptops are not personal devices, and we expect our students to treat them with the utmost care. In the event that you withdraw from PS 235, you are required to return your student's device in the same condition that they borrowed it in.

## Security/Safety

The security of our building is top priority. All parents and guests must enter through the Main Entrance at all of our sites.

The Main Building entrance is on Lenox Road near East 40 Street.  
The Early Childhood Center entrance is on East 58 Street.

**All visitors** must sign in with a **valid photo ID** with the security agent at the desk. The security agent will give you a **pass to come to the main office only**. You will then take the pass to the main office and speak with someone there. They will then direct you accordingly.

**All passes must be returned to the security agent when you exit the building.**

# Technology Responsibility Policy

Students must use technology responsibly, abiding by NYCP's [Internet Acceptable Use Policy](#), and [Social Media Guidelines for Students 12 and Younger](#).

**Digital Citizenship** <https://www.schools.nyc.gov/school-life/school-environment/digital-citizenship>

**Internet Acceptable Use Policy** <https://www.schools.nyc.gov/about-us/policies/internet-acceptable-use-policy>

**Social Media Guidelines for Students 12 and Younger**

<https://www.schools.nyc.gov/school-life/school-environment/digital-citizenship/social-media-guidelines-for-students-12-and-younger>

## **Loss or Damages of Technology**

If your student damages or loses their NYCPS-issued device, return the damaged device to the teacher for repairs or replacement. If lost, please contact your student's teacher for a replacement.

# Test Schedules

## **State Tests**

NYS-Science	Grade 5	April 8 to May 17
NYS—ELA	Grades 3-5	April 11 to May 12
NYS-ENL Speaking	Grade K-5	April 15 to May 24
NYS-Math	Grades 3-5	May 7 to May 8
NYS-ENL Listening, Reading, Writing	Grade K-5	May 13 to May 24

## **Citywide & District Tests**

ENL	Grades K-5	NYSITELL—Incoming	First 10-days off entry
Beginning of Year (BOY)	3K & Pre-K	Creative Curriculum	Sept. 7 to Sept. 30
	Grades K-2	Reading—Acadience	Sept. 18 to Sept. 22
	Grades 3-5	Reading—i-Ready	Sept. 18 to Sept. 22
	Grades K-5	Math—i-Ready	Sept. 27 to Sept. 29
Fall Benchmark	Grades K-5	Math Performance Task	Nov. 14 to 15
	Grades K-5	Writing Performance Task	Nov. 20 to Nov. 21
	Grades 3-5	Edulastic Math—IA #1	Dec. 4 to Dec. 5
Middle of Year (MOY)	Grades K-2	Reading—Acadience	Jan. 2 to Jan. 5
	Grades 3-5	Reading—i-Ready	Jan. 3 to Jan. 4
	Grades K-5	Math—i-Ready	Jan. 9 to Jan. 10
	Grade 5	Science Practice Test	Jan. 31 to Feb. 1
Spring Benchmark	Grades K-5	Writing Performance Task	Mar. 4 to Mar. 5
	Grades K-5	Math Performance Task	Mar. 6 to Mar. 7
	Grades 3-5	Edulastic Math—IA #2	Mar. 25 to Mar. 26
End of Year (EOY)	3K & Pre-K	Creative Curriculum	
	Grades K-2	Reading—Acadience	May 13 to May 17
	Grades 3-5	Reading—i-Ready	May 13 to May 14
	Grades K-5	Math—i-Ready	May 15 to May 16
Academic Celebrations	Grades K-2	Academic Awards	June 11 to June 12
	Grades 3-5	Academic Awards	June 13 to June 14

# Transportation

**OMNY cards** are available for eligible students based on the distance between the student's home and the school. Have your child ask the teacher for a bus pass form. If you have any questions about transportation, please visit the NYCPS website:

<https://www.schools.nyc.gov/school-life/transportation/transportation-overview>

# Uniform Policy

Our dress code requires that all students wear uniforms or navy bottoms and a white shirt — no exceptions. Physical Education attire may be purchased from the PTA. Tank tops, flip flops, crocs, or short shorts may not be worn when the weather gets warmer. Hats & hoods may not be worn in the building. ***\*Students, who are not dressed appropriately, will be asked to call home for a change of clothes.***

<p><b><u>Messages for Families</u></b></p>  <p><a href="https://www.schools.nyc.gov/about-us/messages-for-families">https://www.schools.nyc.gov/about-us/messages-for-families</a></p>	<p><b><u>Policies for ALL</u></b></p>  <p><a href="https://www.schools.nyc.gov/about-us/policies">https://www.schools.nyc.gov/about-us/policies</a></p>
<p><b><u>NYC Schools Account</u></b></p>  <p><a href="https://www.schoolsaccount.nyc/">https://www.schoolsaccount.nyc/</a></p>	<p><b><u>School App</u></b></p>  <p>Apple Link: <a href="#">Click Here</a>      Android Link: <a href="#">Click Here</a></p>
<p><b><u>School Website</u></b></p>  <p><a href="https://www.ps235jmk.org/">https://www.ps235jmk.org/</a></p>	<p><b><u>Class Dojo</u></b></p>  <p><a href="https://www.classdojo.com/">https://www.classdojo.com/</a></p>

# Parent-Teacher Association

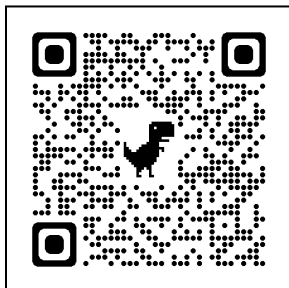
P.S. 235 Janice Marie Knight School  
525 Lenox Road Brooklyn N.Y. 11203  
Telephone (718) 773-4869  
Email: [Lenoxenrichment@yahoo.com](mailto:Lenoxenrichment@yahoo.com)

<b>President</b>	Hartwell Alleyne	<b>Correspondence Secretary</b>	Ava Hollingsworth
<b>Vice President</b>	Ereka Carrington-Morris	<b>Member At Large</b>	Kehmisha Reid
<b>Treasurer</b>	Sonia McIntosh	<b>Member At Large</b>	Ozni Lewis
<b>Recording Secretary</b>	Coelette Jackson	<b>CEC Representative</b>	Tamar DeCoteau
<b>Assistant Treasurer</b>	Mandi Bobb		

<b>MONTH</b>	<b>PTA Executive Board Meetings (Zoom/In-person) @ 7 PM</b>	<b>PTA General Membership Meetings (Zoom) @6:00 PM</b>
<b>September</b>	September 16, 2024	September 18, 2024
<b>October</b>	October 14, 2024	October 16, 2024
<b>November</b>	November 4, 2024	November 20, 2024
<b>December</b>	December 3, 2024 (In-person)	December 18, 2024
<b>January</b>	January 7, 2025	<a href="#">January 15, 2025</a>
<b>February</b>	February 4, 2025 (In-person)	<a href="#">February 12, 2025</a>
<b>March</b>	March 4, 2025	<a href="#">March 19, 2025</a>
<b>April</b>	April 8, 2025 (In-person)	<a href="#">April 23, 2025</a>
<b>May</b>	May 6, 2024	<a href="#">May 21, 2025</a>
<b>June</b>	June 3, 2024	<a href="#">June 18, 2025</a>

**\*\*Dates and topics are subject to change.**

**PTA Membership Dues is \$20 Per Family**



<https://www.ps235jmk.org/pta>



1. Add "Lenox-PS235 PTA INC" with email address [lenoxenrichment@yahoo.com](mailto:lenoxenrichment@yahoo.com) to your contact list.
2. Scan the QR code ← to send funds to PS 235's PTA