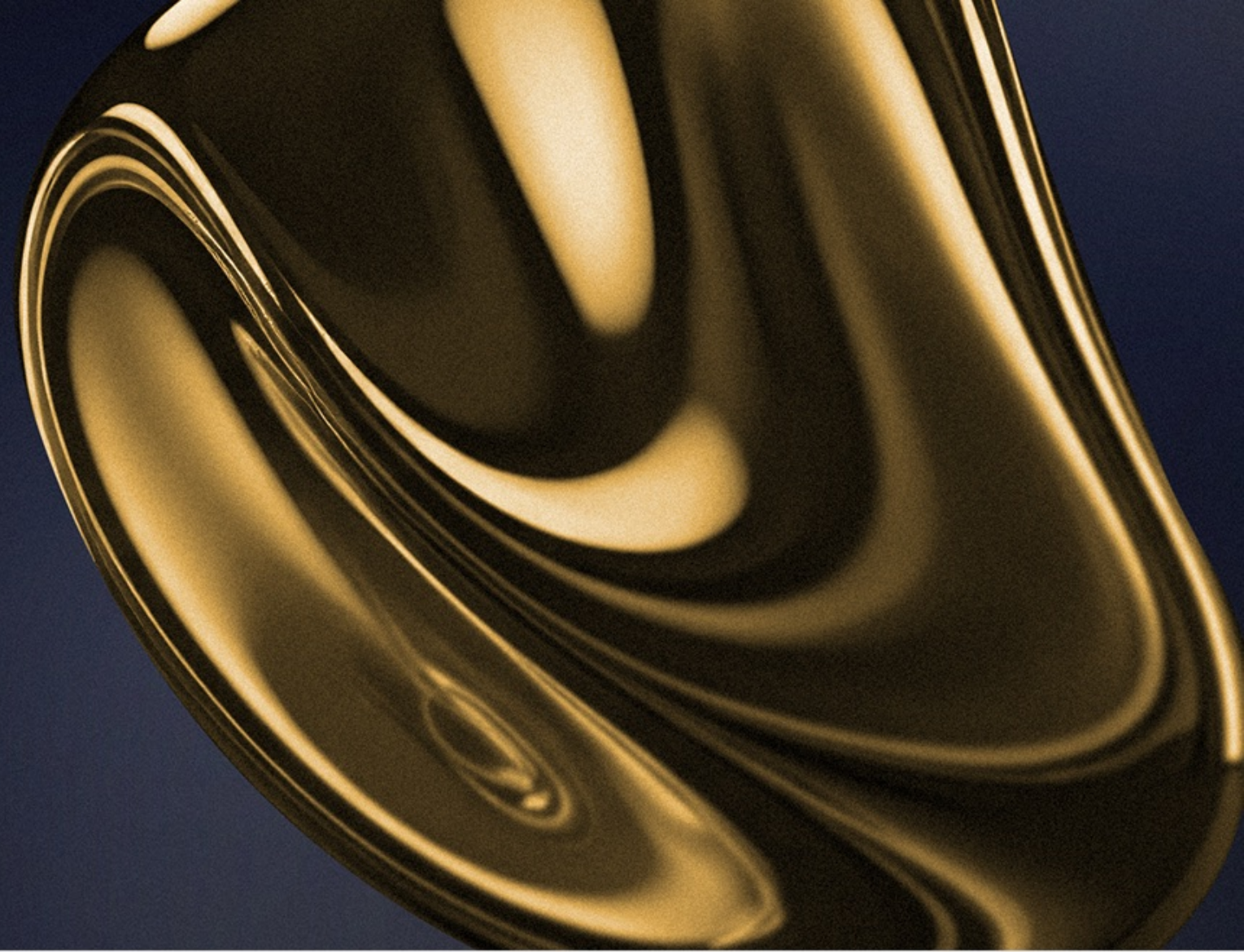


Combining Lumana's AI video intelligence with Disruptive Technologies' wireless sensors enables organizations to monitor environments in real time, link sensor events directly to video, and respond faster to risks across facilities and operations.



Integration overview



Sensor events + video

Lumana automatically indexes temperature, humidity, motion, and activity events with video, making review, download, and sharing easy.



Real-time alerts

Receive instant, AI-powered alerts when defined sensor thresholds are exceeded or when abnormal conditions are detected.



Data-driven insights

Combine sensor and video intelligence in custom dashboards, to reveal patterns, anomalies, and risks.



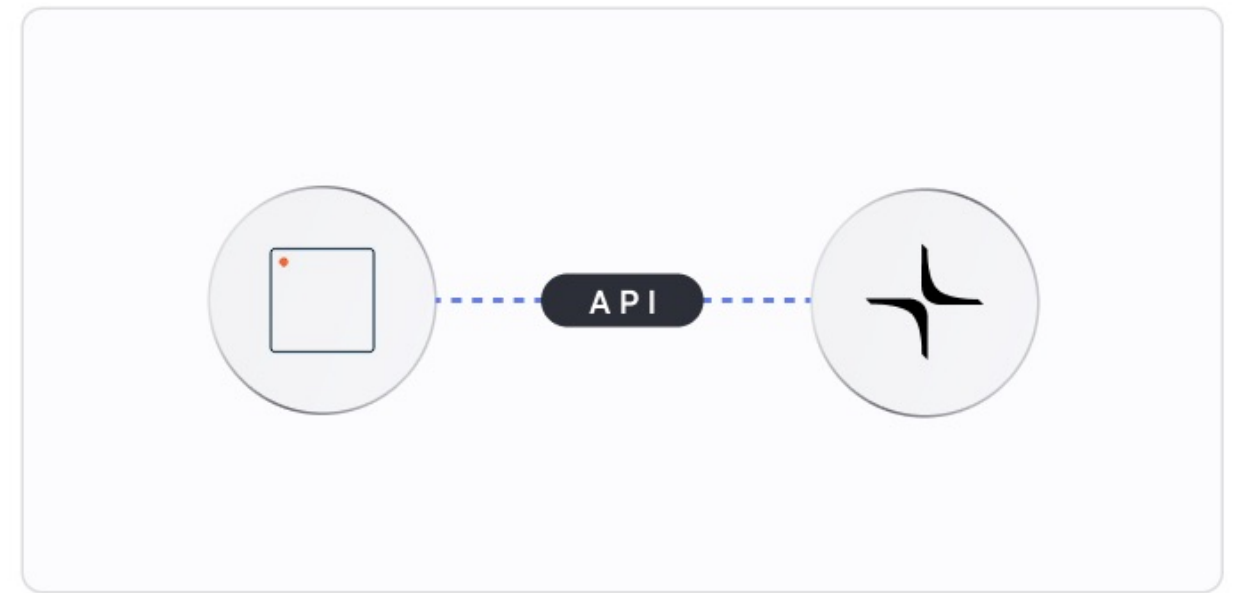
Benefits

Integrating Disruptive Technologies with Lumana elevates safety, security, and operations. Environmental risks such as leaks, temperature spikes, or unauthorized movement are detected in real time. Every sensor event is automatically logged and time-synced with matching video for rapid review. By combining real-time alerts, video context, and historical logs in one platform, teams cut manual monitoring, reduce false alarms, and accelerate incident response and investigations.

How it works

Integrate in minutes

Leveraging Lumana's open architecture, simply add your Disruptive Technologies account API key to connect the two systems in minutes, without re-architecture or downtime.

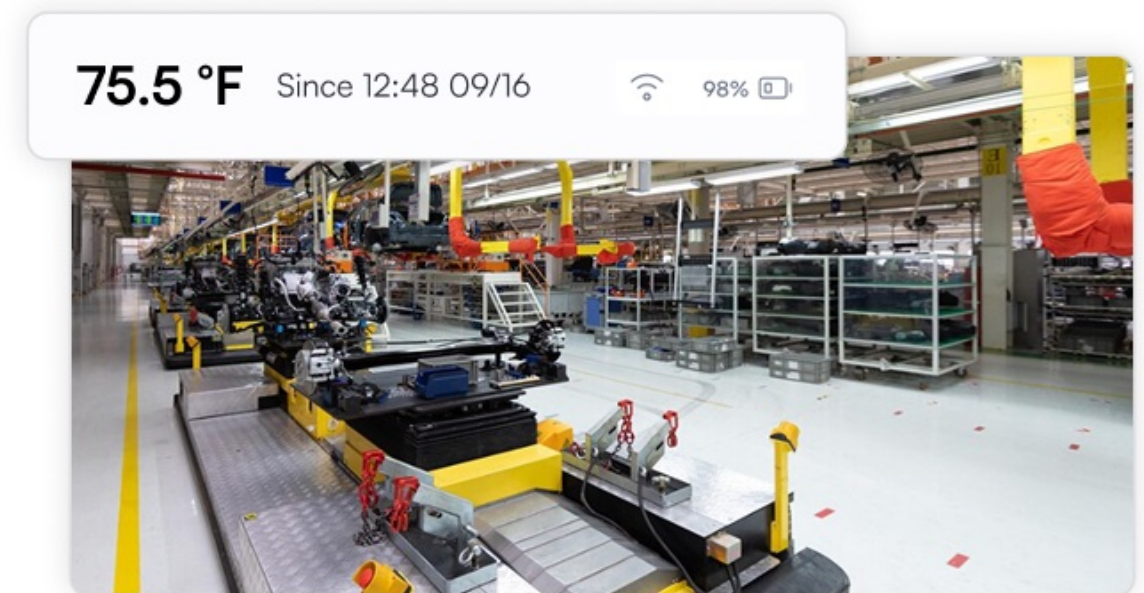


Pair sensors and cameras

Assign sensors to the cameras covering each location. From then on, every event is auto-logged with time-synced video for easy verification and search.

See what matters

Get real-time alerts for temperature fluctuations, water leaks, motion detection, and more. Quickly pull up and review event video via Smart Search or event logs.



Environmental intelligence

Track environmental, occupancy, and movement signals to understand how spaces are used, identify issues early, and maintain safer, more efficient operations.

Temperature	Water presence	Humidity
Desk occupancy	Tactile touch	Door and window
Proximity	Motion	Carbon Dioxide



Discover smarter video security and environmental intelligence

For demo, trial, or sales requests, contact sales@lumana.ai