



Electryfy

The St. Regis Bal Harbour Resort

case study

The St. Regis Bal Harbour, a luxury oceanfront resort and private residence property, recognized that their parking garage lighting no longer met the required illumination levels for visibility and life-safety compliance. The existing fixtures were outdated, produced insufficient light, and created dark zones that impacted aesthetics and security. The goal was to increase illumination without disrupting daily operations or overloading existing electrical systems — and to do so with a premium, architectural-grade lighting product consistent with the St. Regis and Marriott brand standards.



Project Scope

Detailed site evaluation and illumination level audit
Electrical & photometric plans developed and sealed by Falcon Engineering Group
Submission and approval of permit documentation
Supply and installation of 350 high-efficiency LED linear fixtures



Solution

To restore visibility, safety, and brand-level aesthetics, the parking garage lighting system was fully modernized with a tailored, energy-efficient solution.



Results

Achieved uniform illumination that meets and exceeds code requirements
Improved pedestrian visibility, vehicle traffic visibility, and camera visibility
Reduced wattage per fixture by over 50% compared to original equipment



954-626-0267



info@electryfy.com



www.electryfy.com

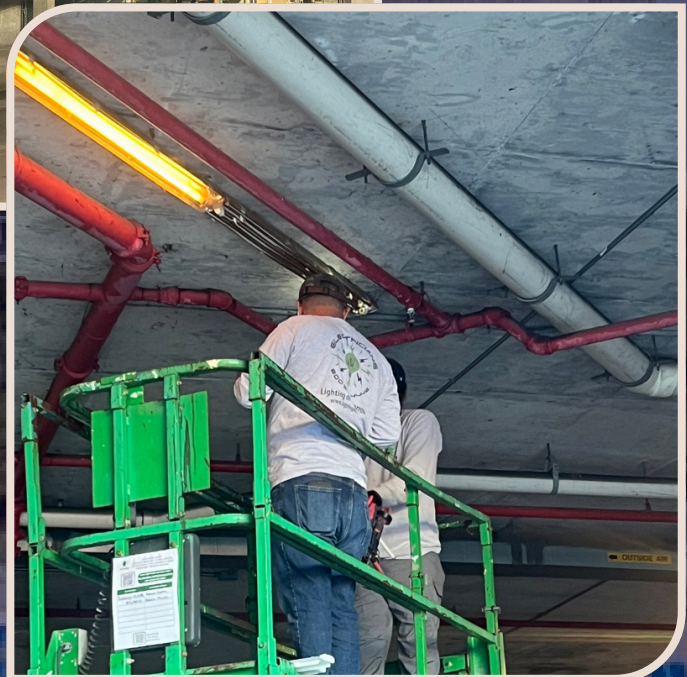


Electryfy

The St. Regis Bal Harbour Resort Project

The St. Regis Bal Harbour, a luxury oceanfront resort and private residence property.

- ✓ Electrical & photometric plans developed and sealed by Falcon Engineering Group
- ✓ Submission and approval of permit documentation
- ✓ Supply and installation of 350 high-efficiency LED linear fixtures



954-626-0267



info@electryfy.com

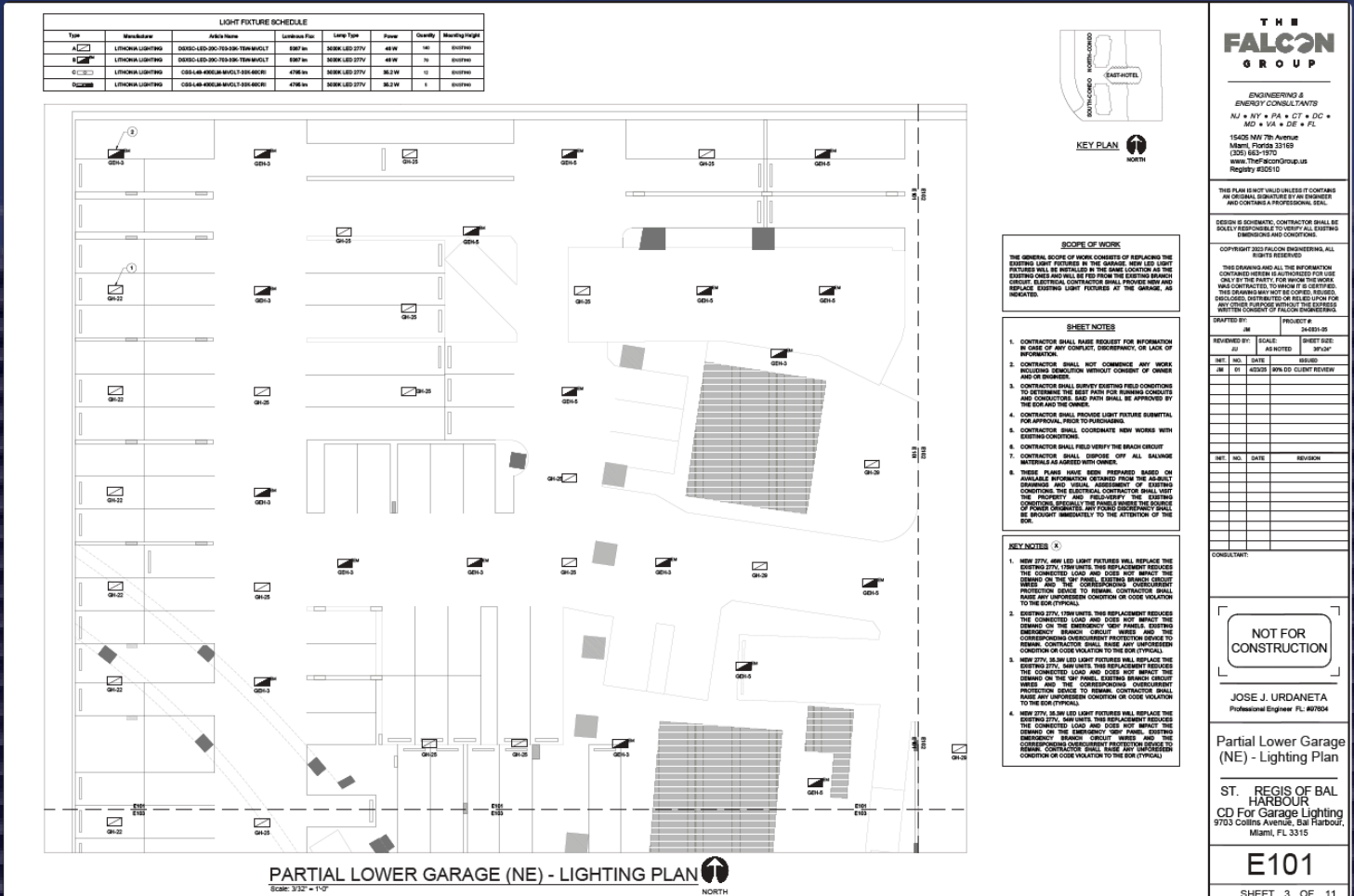


www.electryfy.com

Product and Electrical Engineering Used at this project



Electryfy



✓ CSS Led Strip Light



✓ D Series LED Surface Canopy